

DUCKWORTH LIB., YOUNG HARRIS COLLEGE



5 0839 00108117 3

ENOTAH 1937





The 1937 ENOTAH

Published by the SENIOR CLASS

SAM SMITH

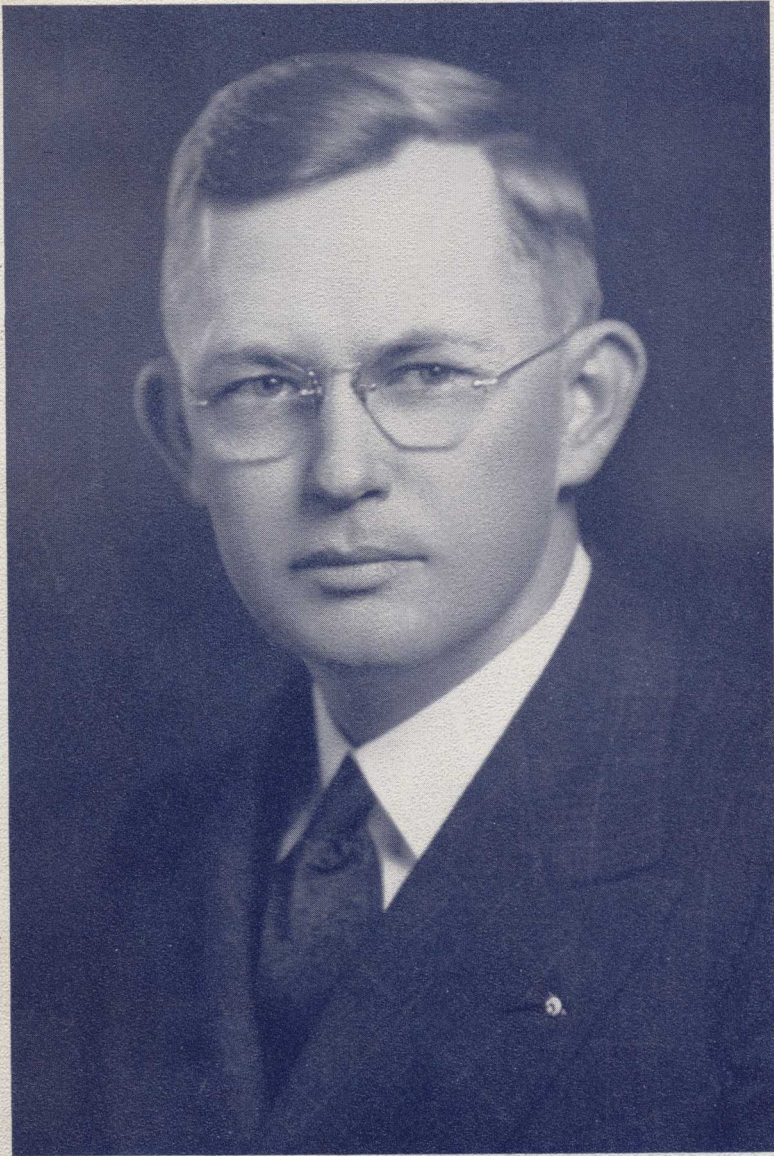
Editor

DAN BRUCE

Business Manager

YOUNG HARRIS COLLEGE

YOUNG HARRIS, GEORGIA



Dedication...

TO COLONEL CHARLES S. REID

Because

Of your undying loyalty and friendship for our school.

Because

Of your keen interest in our welfare and undertakings.

Because

We appreciate you as one of our alumni who has never ceased striving to make the school better.

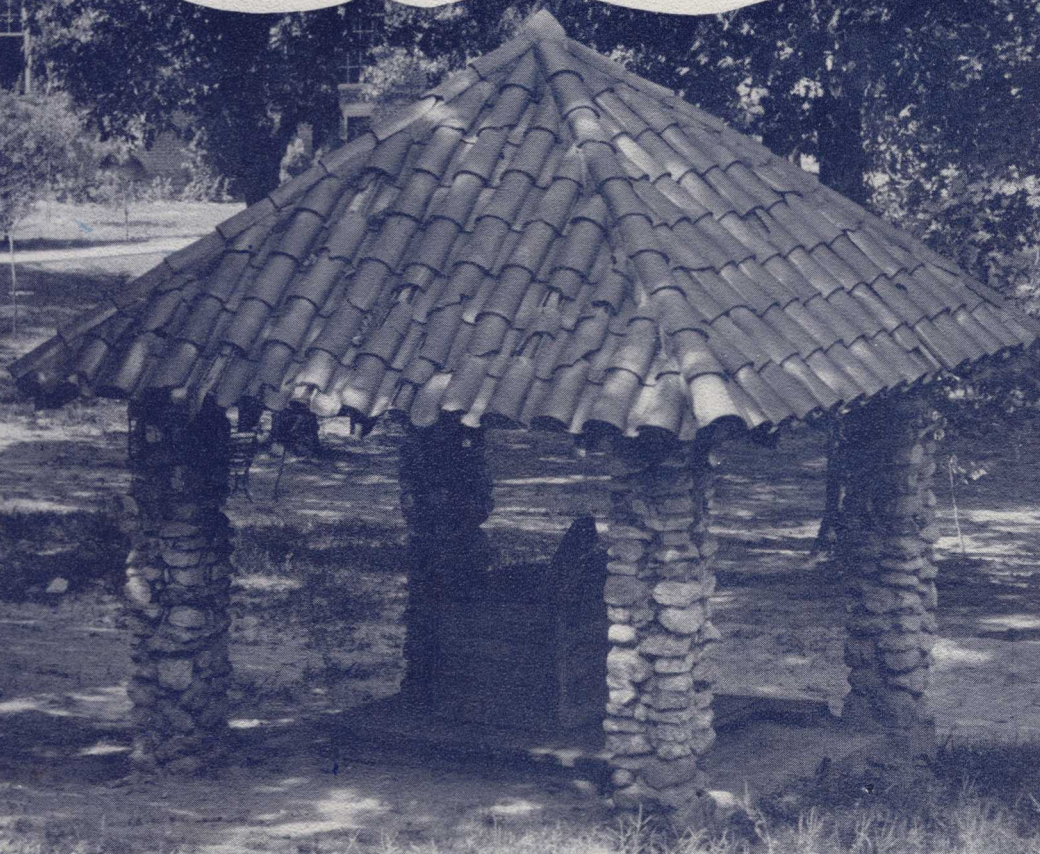
We dedicate this eighth volume of the ENOTAH to you as a manifestation of our appreciation for all you have done for us.

SAM SMITH, Editor

Foreword...

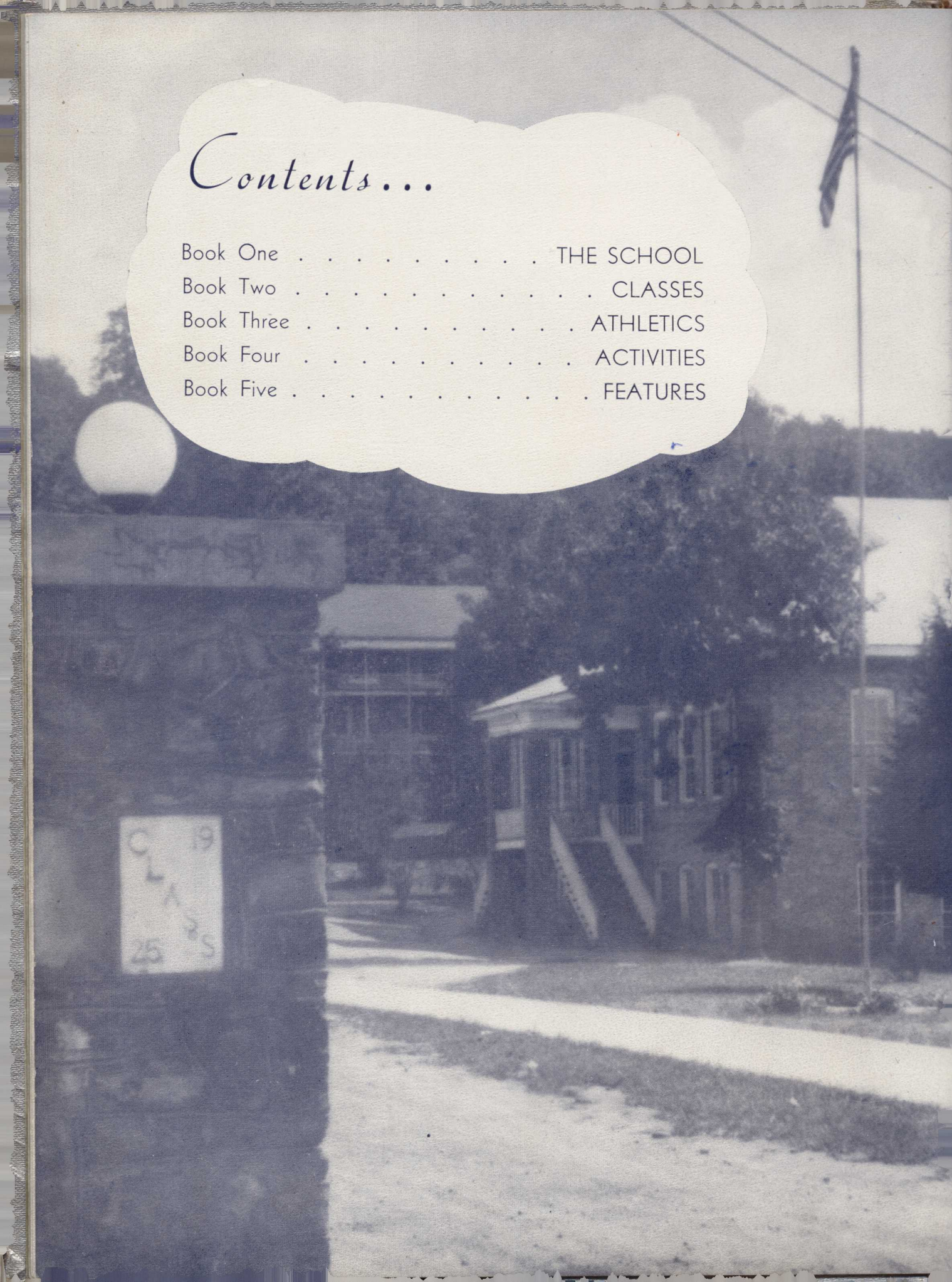
We have attempted this year to prepare an annual of Young Harris College, which will in the later years touch chords of pleasant memories in the hearts of the students of this College.

We hope that you will find each page a treasure representing the many happy days spent on this campus.



Contents...

Book One	THE SCHOOL
Book Two	CLASSES
Book Three	ATHLETICS
Book Four	ACTIVITIES
Book Five	FEATURES





The School

FACULTY

- T. J. LANCE, M.A.
President
- F. M. HUNTER, M.A.
Dean
- J. C. CAMP, M.A.
English
- MRS. S. B. TOLAR, A.B.
Librarian
- W. C. LEAKE
Business Manager
- LESLIE JONES, A.B., M.S.
Psychology and Education
- W. S. MANN, A.B.
Mathematics

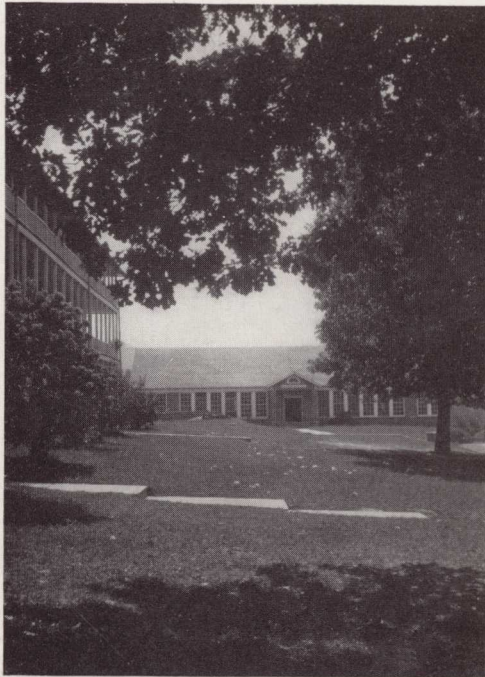


Library



LANCE HUNTER CAMP TOLAR LEAKE JONES MANN

FACULTY



Science Hall

H. M. DOBBS, A.B.
Chemistry

VERDIE MILLER, M.A.
Mathematics

W. L. DANCE, M.A.
English and Latin

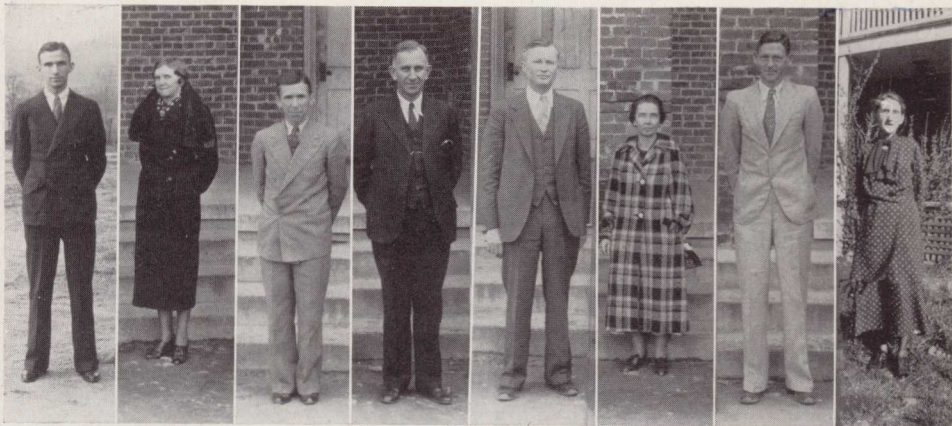
L. C. ATKINS, A.B.
Registrar and Commerce

S. B. TOLAR, M.S.
Physics

LAURA DESHIELDS, M.A.
French

J. W. SHARP, M.A.
History and Government

MRS. J. A. SHARP
Matron



DOBBS

MILLER

DANCE

ATKINS

TOLAR

DESHIELDS

J. W. SHARP

J. A. SHARP

FACULTY

H. L. BUTT, A.B.
High School Principal

WILMA COLEMAN, A.B.
English

MARGARET WILLIS, A.B.
History and Chemistry

E. L. ADAMS, A.B.
Mathematics and Bible

EUGENIA WRIGHT, B.M.
Music

NELL VEATCH
Speech

IVA GREENE
Art

HELEN BURNS, A.B.
French and Commerce



Hamby



BUTT

COLEMAN

WILLIS

ADAMS

WRIGHT

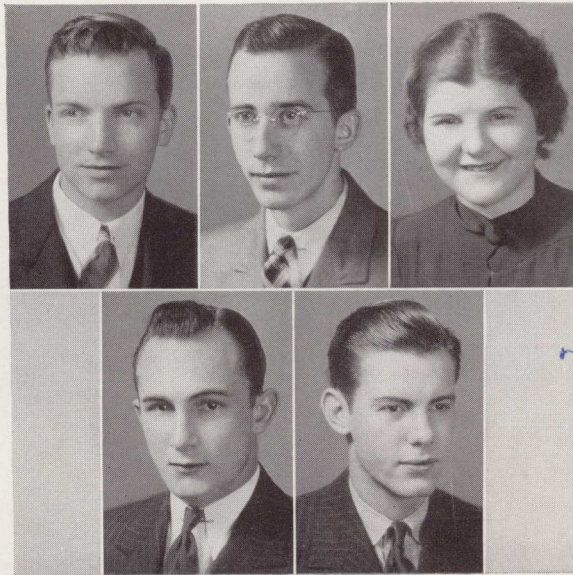
VEATCH

GREENE

BURNS

The 1937 ENOTAH

STUDENT BODY GOVERNMENT



SECKINGER CRANSHAW DAVIS
Vice-President *President* *Secretary*
FARGASON SIMMONS
Solicitor General *Sergeant-at-Arms*

STUDENT COUNCIL



WILLIAMS, WILKES, JACKSON, PARKER, JOHNSON, PEACOCK.
ZAMBOUNIS, BROWN, WERNER, FLANDERS, SYLVESTER, SAYER.
ATKINS, MOZLEY, KEITH, BROWNE, TURNER.



Classes

CLASS '37

S

E

N

I

O

R

S



DAN BRUCE
President



SAM SMITH
Vice-President



JERRY RIVERS
Secretary

The 1937 ENOTAH



ALLEN
BENTON

AUSTIN
BRUCE

BENNETT
BREWER

ANNE ALLEN Washington, Ga.
"She's just the quiet kind whose nature never varies."
Phi Delta; Student Volunteers; Life Service Band; B. S. U.

ELIZABETH AUSTIN Ellenwood, Ga.
"Love to live, live to love."
Phi Delta; Student Volunteers; Life Service Band.

DURWARD BENNETT Ellenton, F. a.
"I'm sure care's an enemy to life."
Phi Chi; International Relations Club; C. W. G., '36.

HAZEL BENTON Monticello, Ga.
"Why study when there's a casers heart to win?"
Phi Delta; Student Council, '37; Basketball, '35, '36; "Y" Club, '36, '37.

DAN R. BRUCE Young Harris, Ga.
"The victory of success is half won when one gains the habit of work."

Y. H. D. S., Vice-President Winter Term, '37; Valedictorian Academy Senior Class, '35; Basketball, '35, '36, '37; Tennis Team, '35, '36, '37; Student Council, '35, '36; President, Academy Class, '35, College Freshman, '36, College Senior, '37; Supreme Court, '37; *Enotah Echoes* Staff, '37; Business Manager ENOTAH, '37; C. W. G.

DORIS BREWER Macon, Ga.
"Beauty is not caused, it is."
Susan B.; Choir; Dramatic Club; Music Club; Student Volunteers; B. S. U.

LEON BOLING Cumming, Ga.
"If you love not the noise of the bells, why then do you pull the rope?"
Phi Chi.

EMILY BROWNE Washington, Ga.
"Her character is her chief charm."
Phi Delta; Student Council; Dramatic Club; C. W. G., '36.

MARJORIE BURGESS Tallulah Falls, Ga.
"Friends, though absent, are still present."
Phi Delta; Art Club.

GEARY CALDWELL Thomasville, Ga.
"Good humor is always a success."
Phi Chi; Dramatic Club; ENOTAH Staff, '37; International Relations Club.

HAZEL MARIAN COLQUITT Crawford, Ga.
"Nobody can give wiser advice than yourself."
Susan B.; Life Service Band, Vice-President Winter Term, '37; Student Volunteers; ENOTAH Staff.

JOHN CRANSHAW Brunswick, Ga.
"Our hours in love have wings, in absence, crutches."
Y. H. D. S., Champion Debater, '37; Anniversarian, '37; Clay Medal Speaker, '36; President Student Body, '37; Forensic Club; Intercollegiate Debater, '36; Dramatic Club; International Relations Club; Student Volunteers; B. S. U.



BOLING
CALDWELL

BROWNE
COLQUITT

BURGESS
CRANSHAW

The 1937 ENOTAH

DORINE COPELAND Siloam, Ga.

"Action is the proper fruit of knowledge."

Phi Delta; Student Volunteers; B. S. U.; Dormitory Council.

GLENN W. CRUMP Toccoa, Ga.

"Look not too high, lest a chip fall in your eye."

Y. H. D. S.; Basketball, '36; Student Volunteers; International Relations Club.

JIMMIE DAVIS Columbus, Ga.

"Great actions speak great minds."

Phi Chi; Supreme Court, '37; Forensic Club; Intercollegiate Debater, '37; Washington Birthday Speaker, '37; Cheer Leader, '37; Business Manager, *Enotah Echoes*; Wrestling Team, '37, State Champion; International Relations Club.

ANNE DAVIS New York, N. Y.

"People find in her everything congenial."

Susan B., President Fall Term, '36, Spring Term, '37, Vice-President Fall Term, Winter Term; Dramatic Club, President Winter Term, Fall Term; Intercollegiate Debater, '36, '37; Forensic Club; Music Club, Vice-President, '37; Choir; Student Council, '36, '37; Secretary Student Body, '37; Cheer Leader, '35; "Y" Club, President, '37; *Enotah Echoes* Staff, '37.

EDDIE RUTH DAVIS Macon, Ga.

"A quiet, shy, unobtrusive maiden."

Susan B.; Student Volunteers; B. S. U.; Dormitory Council, '37.

WALTER K. DENNIS Atlanta, Ga.

"Silence is golden."

Y. H. D. S.; International Relations Club; Student Volunteers; B. S. U.



COPELAND
A. DAVIS

CRUMP
E. R. DAVIS

J. DAVIS
DENNIS

DOROTHY DUNLAP Chipley, Ga.

"Be yourself above all things."

Phi Delta; B. S. U.; C. W. G., '36.

SARA ELIZABETH EBERHARDT Gainesville, Ga.

"Be useful and be happy."

Susan B.; Art Club; Life Service Band; Dormitory Council, '37; C. W. G., '36; *ENOTAH* Staff, '37.

JESSIE ELIZABETH EDMONDS Leary, Ga.

"Progress is the law of life."

Phi Delta; Student Volunteers; B. S. U.

HOMER EDWARDS Gainesville, Ga.

"He dwells in impossibilities."

Phi Chi; *Enotah Echoes* Staff, '37; Forensic Club; Intercollegiate Debater, '37; Dramatic Club; Music Club; International Relations Club; B. S. U.

JIM FARGASON Atlanta, Ga.

"A man beloved, a man elect of men."

Phi Chi, Champion Debater, '37; Intercollegiate Debater, '36; Forensic Club, President, '37; Anniversarian, '37; International Relations Club; Dramatic Club; Student Council, '35; Solicitor General, '37; *ENOTAH* Staff, '35; C. W. G., '34, '36; Basketball, '35, '36, Manager, '37; Football, '34; Academy Basketball, '34.

ANNE PAULINE FLANDERS Macon, Ga.

"We live by admiration, hope, and love."

Phi Delta; Choir; B. S. U.; Student Volunteers; Music Club; Dormitory Council; Student Council.

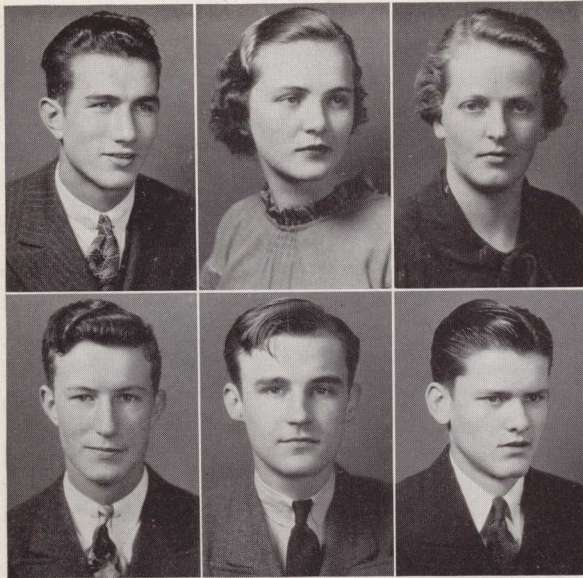


DUNLAP
EDWARDS

EBERHARDT
FARGASON

EDMONDS
FLANDERS

The 1937 ENOTAH



FORKNER
GOLDEN

FREEMAN
GRIFFIN

GENTRY
M. HALL

TOM FORKNER Avondale Estates, Ga.
"Life is one long process of getting tired."
Phi Chi, Vice-President Spring Term, '37; Basketball, '36, '37;
International Relations Club; C. W. G., '36.

ALICE ELIZABETH FREEMAN Lincolnton, Ga.
"She loves and is loved."
Susan B.; B. S. U.; Student Volunteers; Life Service Band;
Choir; Music Club.

MARIE GENTRY Blairsville, Ga.
"Intermingle jest with earnest."

JEFF GOLDEN Thomasville, Ga.
"The man who blushes is not a brute."
Y. H. D. S., President Fall Term; Editor *Enotah Echoes*, '37;
Baseball, '36, '37; Choir; Music Club; International Relations
Club.

CHARLES D. GRIFFIN Port Washington, N. Y.
"Sometimes I sit and think, more often I just sit."
Phi Chi; Dramatic Club; *Enotah Echoes* Staff; International Re-
lations Club.

MORRILL HALL Bronwood, Ga.
"Sincerity is the keynote of success."
Y. H. D. S.; Washington Birthday Speaker; B. S. U.; Student
Volunteers; C. W. G., '35.

SARA ADELIA HALL Watkinsville, Ga.
"Human nature craves novelty."
Phi Delta; Student Volunteers; Life Service Band.

RUTH ALLEN HANSARD Alpharetta, Ga.
"Be yourself if other people will stand for it."
Susan B.; Student Volunteers; Life Service Band.

SUE HARPER Douglasville, Ga.
"It's a pleasure to know her."
Susan B., Vice-President Spring Term; B. S. U.; Student Volun-
teers; Life Service Band.

RUDOLF HARRIS Chipley, Ga.
"An ounce of luck is better than a pound of wisdom."
Phi Chi; B. S. U.; International Relations Club.

KATE ERLINE HAYNES Clermont, Ga.
"Dare, will, keep silent."
Susan B.; Student Volunteers.

EMILY HIGHTOWER Nelson, Ga.
"A little humor is a wondrous thing."
Phi Delta.



S. HALL
HARRIS

HANSARD
HAYNES

HARPER
HIGHTOWER

The 1937 ENOTAH

WYNELLE HUGHES Oakwood, Ga.
"If you would rule the world quietly, you must keep it amused."
 Susan B.; Basketball, '36; C. W. G., '36.

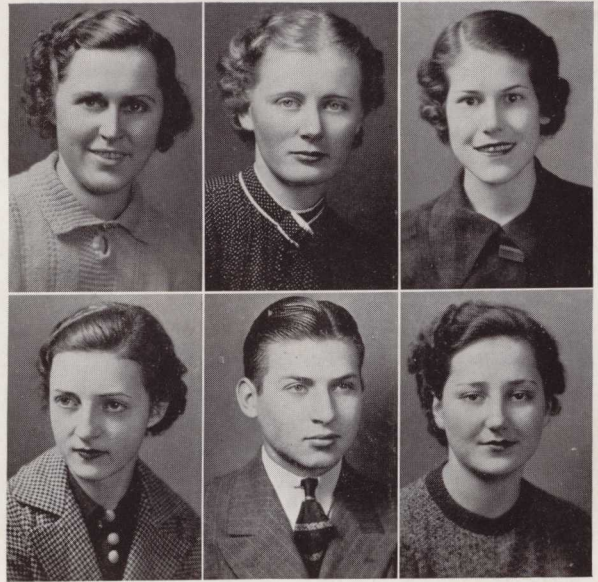
SARA BERNICE HUTCHESON Kite, Ga.
"The end of life is not wisdom but action."
 Susan B.; Basketball, '36; B. S. U.; C. W. G., '36; Art Club; Life Service Band.

ANNE JACKSON Dunwoody, Ga.
"It's nice to be natural when you're naturally nice."
 Phi Delta; Student Council, '37; Dormitory Council, '37.

HAZEL ELIZABETH JOHNSON Jefferson, Ga.
"Quiet and calm, she fills her sphere well."
 Susan B.; Music Club; Dormitory Council, '37.

H. V. JOHNSON, JR. Porterdale, Ga.
"Every man must fashion his gait according to his calling."
 Phi Chi; Ministerial Association, President Winter Term, '37; Student Council; International Relations Club; B. S. U.; Student Volunteers.

BERNICE JONES Whigham, Ga.
"She is a winsome, wee, thing."
 Phi Delta; Art Club; B. S. U.; C. W. G., '36.



HUGHES
H. JOHNSON

HUTCHESON
H. V. JOHNSON

JACKSON
JONES



B. KEITH
KENNEY

T. KEITH
MADDOX

KELLEY
MALCOLM

BONNIE KEITH Clermont, Ga.
"True worth needs no interpreter."
 Phi Delta, President Fall Term, '36, Vice-President Spring Term, '37; B. S. U., President, '36, '37; Dramatic Club; Dormitory Council; *Enotah Echoes* Staff; Forensic Club; Intercollegiate Debater, '36, '37.

TOMMY KEITH Gainesville, Ga.
"Lighter grows the burden that is well borne."
 Susan B.; Student Council, '37; Dramatic Club.

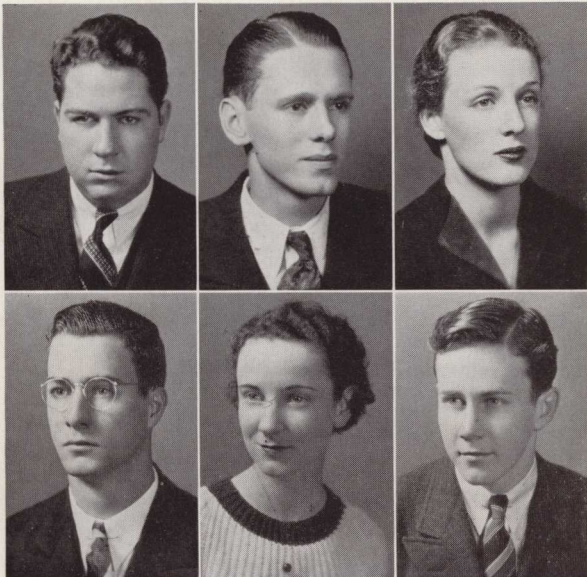
HAL KELLEY Atlanta, Ga.
"Music is the finest expression of the true artist."
 Phi Chi; Music Club; Dramatic Club, President Spring Term; Choir; International Relations Club.

MARTHA KENNEY Atlanta, Ga.
"Everything comes to her who seeks it."
 Phi Delta, President Winter Term, '36; Dramatic Club.

GEORGE E. MADDOX Alpharetta, Ga.
"I'd rather laugh a bright-haired boy than reign a grey-haired king."
 Phi Chi; Dramatic Club; Choir; *Enotah Echoes*; Basketball, '36, '37; Tennis Team, '36, '37; Music Club; International Relations Club.

FRANCES MALCOLM Atlanta, Ga.
"Adapt thyself to the estate that is thy portion."
 Susan B.; B. S. U.

The 1937 ENOTAH



MASHBURN
MORGAN

MCGRAW
MOZLEY

NEEL
MITCHELL

MARCUS MASHBURN Cumming, Ga.
*"Some think the world is made for fun and folly
and so do I."*
Phi Chi.

ROBERT P. McGRAW Harlem, Ga.
"Thought is deeper than speech."
Phi Chi; International Relations Club.

IDA MITCHELL Summerville, Ga.
"She can because she thinks she can."
Phi Delta; Basketball, '36, '37, Manager, '37; "Y" Club.

JEROME MORGAN Mansfield, Ga.
"Advice, the smallest current coin."
Y. H. D. S.; Baseball, '37; B. S. U.; Student Volunteers; In-
ternational Relations Club.

ANNA RUTH MOZLEY Douglasville, Ga.
*"The best way to keep good acts in mind is to refresh
them with new."*
Susan B., Vice-President Fall Term; Student Volunteers; Life
Service Band; Dramatic Club; Choir; Student Council; Dormi-
tory Council; Forensic Club; Intercollegiate Debater, '36, '37.

BILL NEEL Thomasville, Ga.
"Learning makes a man fit company for himself."
Phi Chi; Music Club; Art Club; International Relations Club.

EMMA NELL NUNN Jefferson, Ga.
"A manner quiet, but awake."
Susan B.; Dormitory Council, '37.

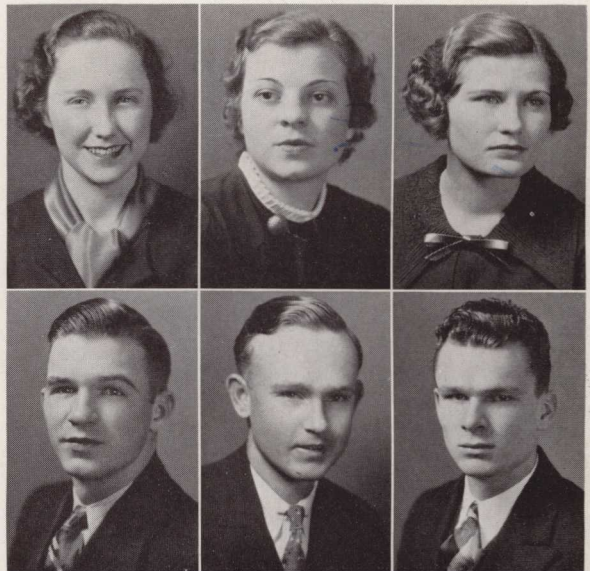
ANGELA MAXINE PAINE . . . Crawfordville, Ga.
"Music has charms to soothe a savage beast."
Susan B.; Music Club; Dormitory Council; Student Volunteers;
Life Service Band.

REBECCA PARKS Calhoun, Ga.
"Business tomorrow."
Phi Delta; B. S. U.

WILLIAM JOSEPH PATTERSON . . . Macon, Ga.
"Something will come of this."
Y. H. D. S.

JOHN ODEN PEACOCK Blackshear, Ga.
"Men of few words are the best men after all."
Y. H. D. S.; International Relations Club.

PIERCE A. PEACOCK Morrow, Ga.
"Better done is better than well said."
Phi Chi; Student Volunteers; B. S. U.; International Relations
Club.



NUNN
PATTERSON

PAINE
O. PEACOCK

PARKS
P. PEACOCK

The 1937 ENOTAH

ZERILDA ANNE PECK Trion, Ga.
"Gentle of speech, but absolute of rule."
 Susan B., President Winter Term; Dramatic Club; Dormitory Council.

J. D. PERSONS, JR. Monticello, Ga.
"Gold is tried by fire, brave men by adversity."
 Phi Chi, President Winter and Spring Terms, '37; Supreme Court; International Relations Club.

CLARA BELLE PETIT Elijay, Ga.
"Let not advantage slip."
 Susan B.; B. S. U.; Student Volunteers; Life Service Band.

MARTHA PHILLIPS Elberton, Ga.
"Action is eloquence."
 Phi Delta; Student Volunteers; Life Service Band.

JERRY RIVERS Atlanta, Ga.
"Ambition is the growth of every clime."
 Phi Delta; Dramatic Club; Forensic Club; Intercollegiate Debater, '36, '37; Basketball, '36, '37, Captain, '37; Secretary Senior Class.

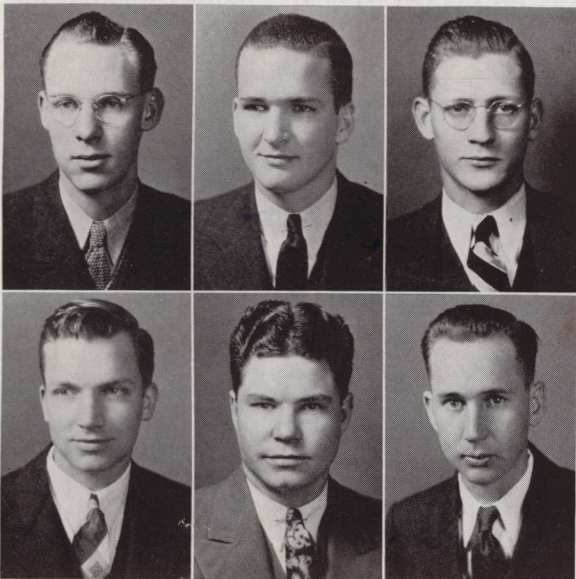
BOB RUTLAND Gracewood, Ga.
"A penny saved is a penny earned."
 Y. H. D. S.; Student Volunteers; International Relations Club.



PECK
PHILLIPS

PERSONS
RIVERS

PETIT
RUTLAND



SAYER
SECKINGER

SCALES
SHAW

SCHAEFER
SHELLNUTT

JOT SAYER Douglasville, Ga.
"He is capable of imagining all, of arranging all, and of doing all."
 Phi Chi, Vice-President Winter Term; Student Council; ENOTAH Staff; International Relations Club.

JOE SCALES Perry, Fla.
"You've not convinced a man because you have silenced him."
 Phi Chi.

BILL SCHAEFER Miami, Fla.
"The thing we long for, that we are for one transcendent moment."
 Y. H. D. S., Champion Debater; Forensic Club; Clay Medal Speaker, '36; Supreme Court; Ministerial Association; Student Volunteers; B. S. U.; International Relations Club.

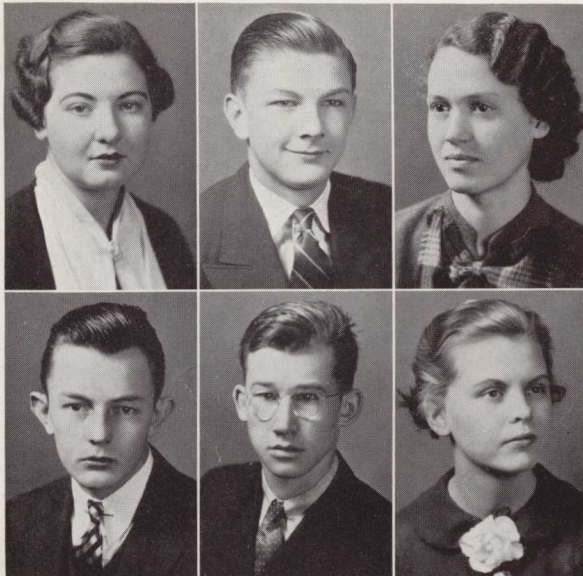
ERNEST SECKINGER Springfield, Ga.
"Who holds a power but newly gained is ever stern of mind."

Y. H. D. S., Vice-President Fall Term, President Winter Term; Forensic Club; Intercollegiate Debater, '37; Washington Birthday Speaker; Student Volunteers; Ministerial Association, President Fall Term; Baseball, '36, '37; International Relations Club.

ELIE V. SHAW Porterdale, Ga.
"Faith, he must make his stories shorter or change comrades once a quarter."
 Phi Chi; Wrestling Team, '37.

GAY SHELLNUTT Ropville, Ga.
"All glory comes from daring to begin."
 Phi Chi.

The 1937 ENOTAH



H. SMITH
STOTT

S. SMITH
TABOR

SNELL
THACKER

HELEN SMITH Gainesville, Ga.
*"I can study my books at any time. They are
 always disengaged."*
 Phi Delta.

SAM SMITH Monticello, Ga.
*"Who does the best his circumstances allow, does well,
 acts nobly; angels could do no more."*
 Phi Chi, Champion Debater, Vice-President Fall Term; Forensic
 Club, Vice-President, '37; Editor ENOTAH, '37; Dramatic Club;
 Vice-President Senior Class, '37; International Relations Club.

BOBBY CHARITY SNELL Sne lville, Ga.
"The way to the highborn is ambition."
 Susan B.; "Y" Club; Student Volunteers; Life Service Band.

J. R. STOTT Poulan, Ga.
"It is better to be brief than tedious."
 Y. H. D. S., Champion Debater; Forensic Club; Choir; Music
 Club; B. S. U.; Student Volunteers; International Relations
 Club.

HAROLD TABOR Young Harris, Ga.
*"With pen and with pencil we are learning to say nothing,
 more cleverly every day."*
 Y. H. D. S.; Enotah Echoes Staff.

ELEANOR WINGFIELD THACKER, Cleveland, Ga.
*"Written with a pen of iron, and with the
 point of a diamond."*
 Susan B.; Enotah Echoes Staff; Choir; Music Club; Student
 Volunteers; Life Service Band.

LOY THOMAS Morganton, Ga.
"Language is the dress of thought."
 Phi Delta; C. W. G., '36.

ALLEN TURNER Royston, Ga.
"The real essence of work is concentrated energy."
 Y. H. D. S.

FRED HELLER TURNER Lavonia, Ga.
"Think of ease, but work on."
 Y. H. D. S.; Student Volunteers.

IMOGENE TURNER Macon, Ga.
"A cheerful disposition is a fund of ready capital."
 Phi Delta, Vice-President Winter Term, President Spring Term;
 Vice-President Dormitory Council; Dramatic Club, Vice-Presi-
 dent Fall and Winter Terms, '37; B. S. U.; Student Volunteers.
 Volunteers.

JOHN L. TURNER Thomasville, Ga.
*"To do easily that which is difficult for others
 is the mark of talent."*

Phi Chi; Forensic Club; Intercollegiate Debater, '37; Drama'ic
 Club, President Winter Term; Student Council; ENOTAH Staff;
 Washington Birthday Speaker; Art Club; Choir; Music Club;
 Orchestra Director, '36; Wrestling Team, '37; Interna tional Re-
 lations Club.

ROSE WARE Lincolnton, Ga.
"Is truth ever barren?"
 Phi Delta.



THOMAS
I. TURNER

A. TURNER
J. TURNER

F. TURNER
WARE

The 1937 ENOTAH

VAN WATTS Fairmount, Ga.
"Every man has a sane spot somewhere."
 Phi Chi.

CATHERINE WERNER Ware Shoals, S. C.
"She lightens all the dark corners."
 Susan B., Vice-President Winter Term; Student Council; Dormitory Council; Student Volunteers.

TANNIE E. WESTMORELAND Clermont, Ga.
"We are wiser than we know."
 Susan B.; Dormitory Council, '33, '34, '35, President, '37; C. W. G., '33, '34, '35, '36.

SAM L. WHITMIRE Toccoa, Ga.
"It is working that makes a workman."
 Y. H. D. S.; International Relations Club.

REBA ELIZABETH WILBANKS Clarkesville, Ga.
"To gentle souls every task is noble."
 Susan B.; Student Volunteers.

BILLYE WILKES Norwood, Ga.
"Life is to be fortified by many friendships. To love and be loved, is the greatest happiness of existence."
 Phi Delta; Dramatic Club; Student Council; ENOTAH Staff, '37; Music Club, President, '37; Choir; Basketball, '36; Cheer Leader, '37; Dormitory Council, '37.

SAM H. WILLIAMS Midland, Ga.
"Dancing, the child of music and of love—the poetry and the poet."
 Phi Chi; Student Council; Washington Birthday Speaker; International Relations Club, President, '37; Dramatic Club, Vice-President Spring Term.



WATTS
WHITMIRE

WERNER
WILBANKS
WILLIAMS

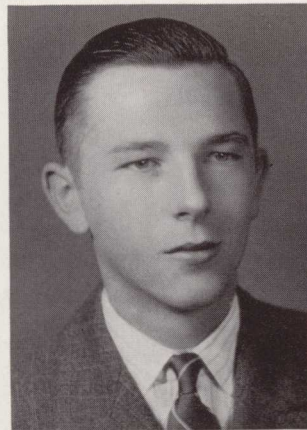
WESTMORELAND
WILKES



ATKINS
Vice-President



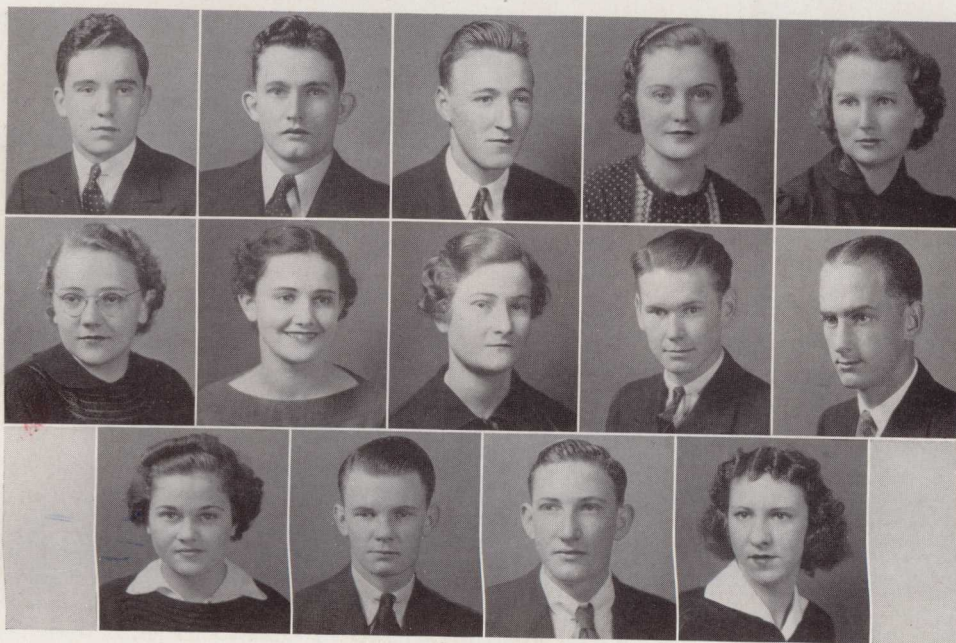
TOWNSEND
Secretary



LANCE
President

OFFICERS
FRESHMAN CLASS

The 1937 ENOTAH



ATKINS
BROWNLOW

AMOS
BUFORD

ANDERSON
CROUCH

BARRON
DAVIS

BRADBURY
DAVIDSON

DICKEY

FAIN

HOFFMAN

GRANT

LAWRENCE C. ATKINS . . . Young Harris, Ga.
Phi Chi

MACK AMOS . . . LaGrange, Ga.
Phi Chi

FRANK W. ANDERSON . . . Maysville, Ga.
Y. H. D. S.

MELBA REE BARRON . . . Cumming, Ga.
Susan B.

EMILY BRADBURY . . . Luthersville, Ga.
Phi Delta

BONNIE BROWNLOW . . . New Holland, Ga.
Phi Delta

JOSEPHENE BUFORD . . . Macon, Ga.
Susan B.

RUTH MARIE CROUCH . . . Swainsboro, Ga.
Phi Delta

THOMAS W. DAVIS . . . Chula, Ga.
Y. H. D. S.

RUSSELL DAVIDSON . . . Columbus, Ga.
Phi Chi

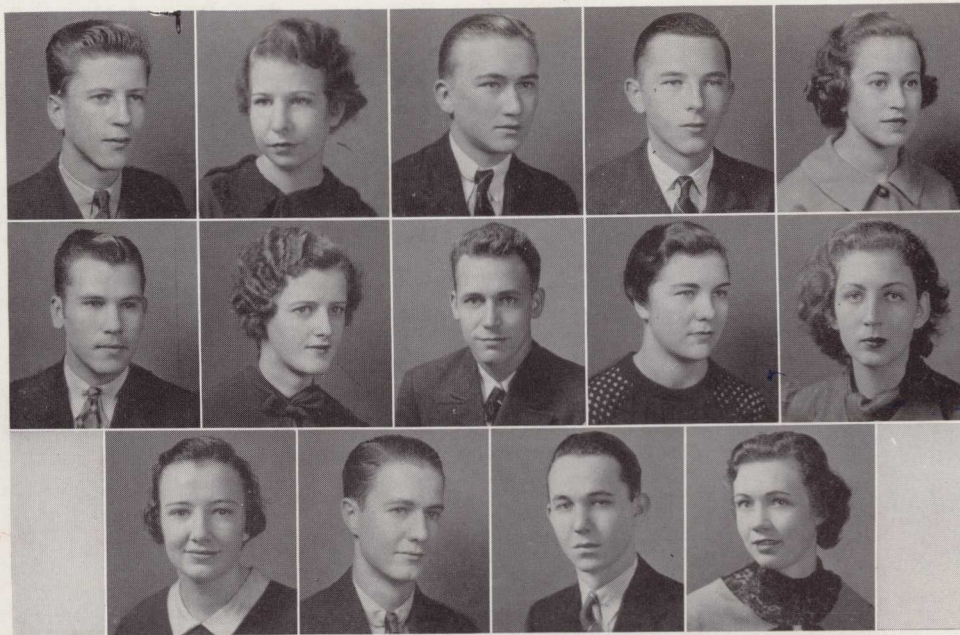
VIRGINIA DICKEY . . . Murphy, N. C.
Phi Delta

RALPH FAIN . . . Gainesville, Ga.
Phi Chi

DOW WALTER HOFFMAN . . . Rhine, Ga.
Phi Chi

BLANCHE GRANT . . . Murphy, N. C.
Susan B.

The 1937 ENOTAH



HUNTER
MARTIN

JENKINS
MAYFIELD
MOORE

KELLEY
MCAFEE
MORGAN

LANCE
MCNALLY
MORRIS

LOWERY
MERRITT
MORTON

HOMER HUNTER . . . Young Harris, Ga.
Phi Chi

WYNTON JENKINS . . . Clinton, Miss.
Susan B.

DAVID KELLEY . . . Union Point, Ga.
Y. H. D. S.

BOB LANCE . . . Gainesville, Ga.
Phi Chi

MARIE LOWERY . . . Ocoee, Tenn.
Phi De'ta

FOREST MARTIN . . . Flowery Branch, Ga.
Phi Chi

SAVANNAH MAYFIELD . . . Monroe, Ga.
Susan B.

FRANK M. McAFEE . . . Macon, Ga.
Phi Chi

ELIZABETH McNALLY . . . Chickamauga, Ga.
Phi De'ta

ELIZABETH MERRITT . . . Greenwood, S. C.
Susan B.

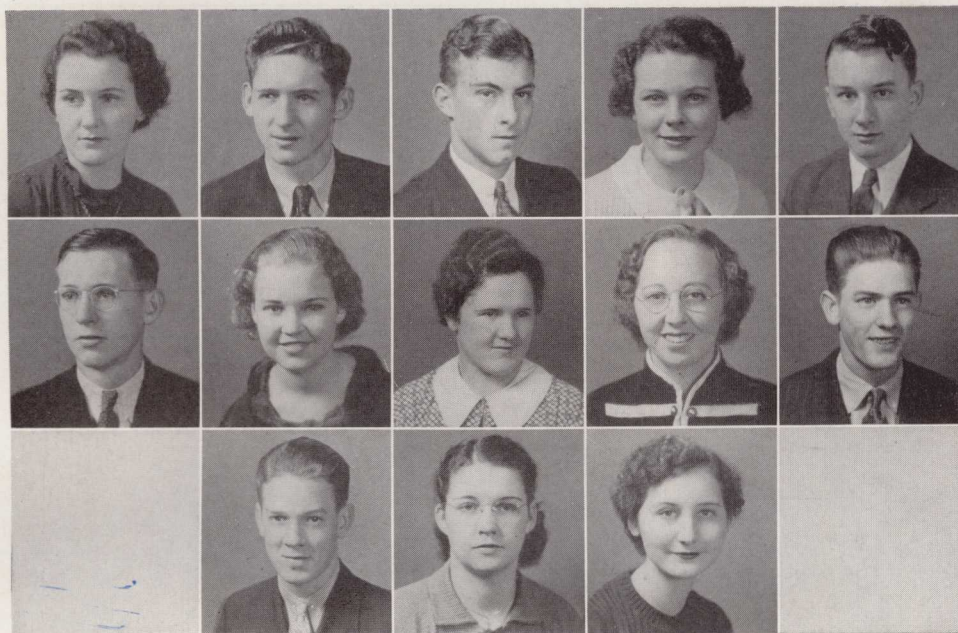
MARY EMMA MOORE . . . Cedar Grove, Ga.
Susan B.

WILLIAM LANIER MORGAN . . . Mansfield, Ga.
Y. H. D. S.

ALBERT L. MORRIS . . . Young Harris, Ga.
Y. H. D. S.

HELEN MARIE MORTON . . . Madison, Ga.
Susan B.

The 1937 ENOTAH



MOZLEY
PEAVY

NIX
PECK
J. ROGERS

PAINÉ
PIERCE
ROLLINS

PARKER
POINDEXTER
SASSER

PATILLO
B. ROGERS

FANNY LOUISA MOZLEY . Douglasville, Ga.
Susan B.

H. EARL NIX Buford, Ga.
Y. H. D. S.

GEORGE PAINE Crawfordville, Ga.
Y. H. D. S.

BLANCHE PARKER At'anta, Ga.
Phi De'ta

OLIN PATILLO Chipley, Ga.
Phi Chi

JACK PEAVY Jesup, Ga.
Y. H. D. S.

JUNE PECK Trion, Ga.
Phi Delta

EDITH PIERCE Gainesville, Ga.
Susan B.

NONA BELLE POINDEXTER Ellijay, Ga.
Susan B.

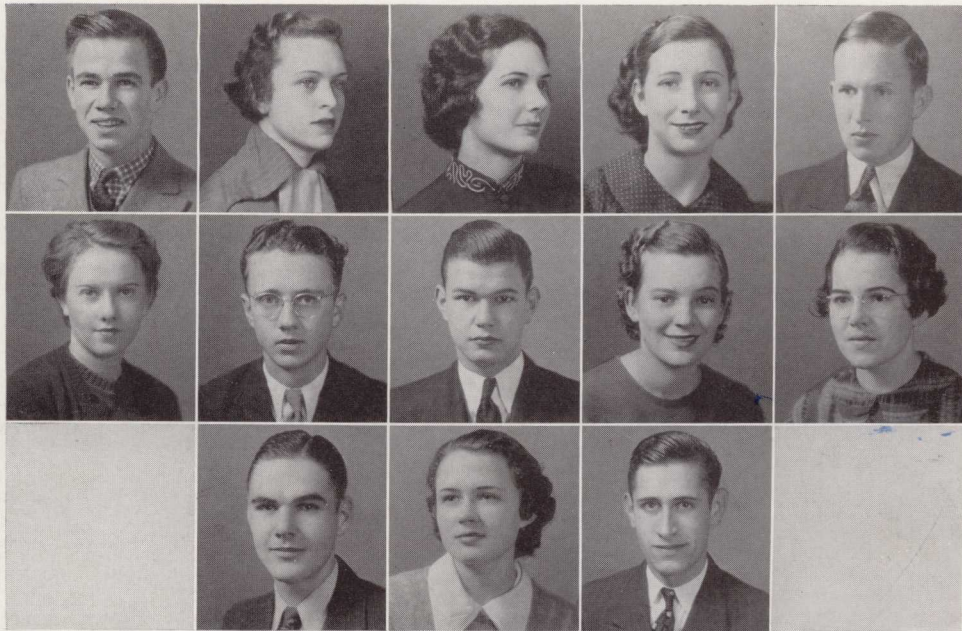
BILL ROGERS Gainesville, Ga.
Phi Chi

JACK ROGERS, JR. Gainesville, Ga.
Phi Chi

MARY JANE ROLLINS Moreland, Ga.
Susan B.

MARGERY SASSER Cairo, Ga.
Phi De'ta

The 1937 ENOTAH



SCOTT
STANTON

SHOCKLEY
STONE
WALKER

SMITH
STRETCH
WILLIAMS

SPOONER
TOWNSEND
ZAMBOUNIS

STANFORD
TUMLIN

- | | |
|---|--|
| <p>BILL SCOTT Decatur, Ga.
 Phi Chi</p> <p>MARTHA SHOCKLEY Apalachee, Ga.
 Susan B.</p> <p>SUE SMITH Kingston, Ga.
 Susan B.</p> <p>LILA MAE SPOONER Thomasville, Ga.
 Phi Delta</p> <p>BURTON STANFORD Waverly Hal', Ga.
 Phi Chi</p> | <p>SARA STANTON Newborn, Ga.
 Phi Delta</p> <p>J. MARION STONE Monticello, Ga.
 Phi Chi</p> <p>JAMES EDWIN STRETCH Waverly Hall, Ga.
 Phi Chi</p> <p>WINIFRED TOWNSEND Murphy, N. C.
 Phi Delta</p> <p>LOUISE TUMLIN Gainesville, Ga.
 Susan B.</p> |
| <p>DICK WALKER Gainesville, Ga.
 Phi Chi</p> <p>MAXINE WILLIAMS Cumming, Ga.
 Susan B.</p> <p>JAMES A. ZAMBOUNIS Atlanta, Ga.
 Y. H. D. S.</p> | |

ACADEMY OFFICERS

Senior Class

'37



BILL M. SIMMONS
President



VIRGINIA LUKE
Vice-President



GEORGE C. MANN
Secretary

The 1937 ENOTAH

A
C
A
D
E
M
Y



BRITT
LEATH

BROWN
LUKE

CHENEY
MANN

GUNN
SCURRY

HASTINGS
B. SIMMONS

HERRINGTON
P. SIMMONS

S
E
N
I
O
R
S

IMOGENE BRITT Atlanta, Ga.
Phi Delta

MARIAN BROWN Atlanta, Ga.
Susan B.

DORRIT CHENEY Jacksonville, Fla.
Phi Delta

OTIS GUNN Monticello, Ga.
Phi Chi

VIRGINIA HASTINGS Perry, Fla.
Phi Delta

CLAYTON L. HERRINGTON Waynesboro, Ga.
Phi Chi

KATHLEEN LEATH Chipley, Ga.
Phi Delta

VIRGINIA LUKE Atlanta, Ga.
Phi Delta

GEORGE C. MANN Atlanta, Ga.
Phi Chi

DONNELLE SCURRY Miami, Fla.
Susan B.

BILL SIMMONS Washington, D. C.
Phi Chi

PARK B. SIMMONS Washington, D. C.
Phi Chi



Athletics

The 1937 ENOTAH



JONES



DANCE

LESLIE JONES . . . *Athletic Director*
W. L. DANCE . . . *Basketball Coach*
J. W. SHARP . . . *Baseball Coach*
HELEN BURNS . . . *Basketball Coach*



SHARP



Cheer Leaders

The 1937 ENOTAH

BOYS' BASKETBALL

DANCE *Coach*

FARGASON *Manager*

Forwards

CARSON
MADDOX
HARROLD
STANFORD
HARDY

Centers

ANDERSON
DAVIDSON
SHERIDAN

Guards

FORKNER
MILES
BRUCE
PATILLO
MORGAN



The 1937 ENOTAH

GIRLS' BASKETBALL

BURNS *Coach*

RIVERS *Captain*

MITCHELL *Manager*

Forwards

RIVERS
CROUCH
HUNT
LOWERY

Center

McNALLY

Guards

LUNSFORD
MITCHELL
WILLIAMSON
HUTCHINSON
SWANSON
ADAMS



The 1937 ENOTAH

BASEBALL

SAYER	<i>Manager</i>
SHARP	<i>Coach</i>
BOYD R. F.	STANFORD C. F.
FARGASON F. B.	HARRELL P.
ROSSER L. F.	MORGAN S. B.
GOLDEN P.	ROBINSON L. F.
DAY S. S.	BREWER P.
SECKINGER C.	CARSON C. F.
McNEW T. B.	BARRETT P.
BEARD C.	PATTERSON S. B.
BRITT C.	



Front row, left to right: BOYD, FARGASON, ROSSER, GOLDEN, DAY, SECKINGER, McNEW.
Second row, left to right: BEARD, STANFORD, HARRELL, MORGAN, ROBINSON, BREWER, CARSON,
BARRETT, PATTERSON, BRITT.
Back row, left to right: SAYER, SHARP.

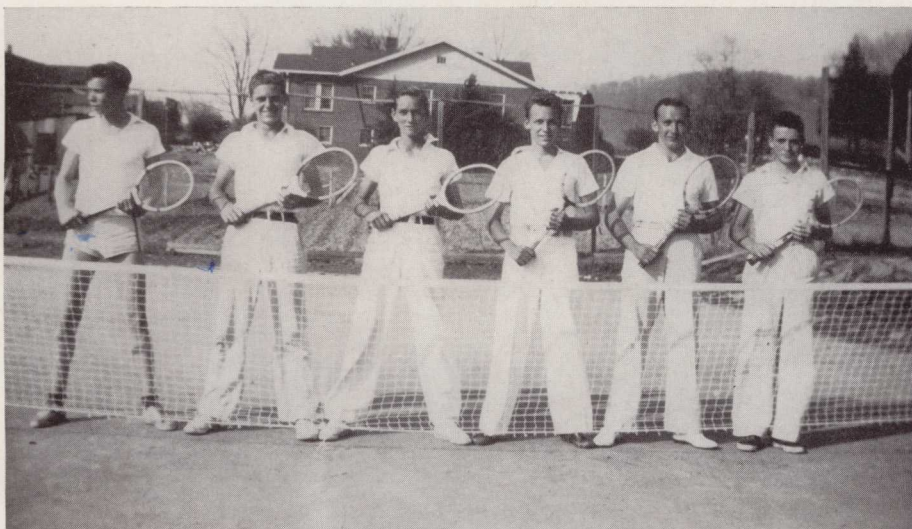
The 1937 ENOTAH

WRESTLING



*Front row, left to right: DAVIS, GIPPLE, TURNER, SCOTT.
Back row, left to right: SPEAR, Manager, RADWAY, BOND, SHAW, BOYD, SMITH.*

TENNIS



Left to right: MADDOX, H. HARDY, G. HARDY, McAFEE, HOOD, READ.

Alma Mater

*In Georgia where the mountains blue
Are pointing toward the sky,
There stands our Alma Mater dear;
There's where our hearts all lie.*

*We're true to thee, dear Y. H. C.
Thy fame is our delight,
We hail thee, Alma Mater, dear,
Thy Purple and thy White.*

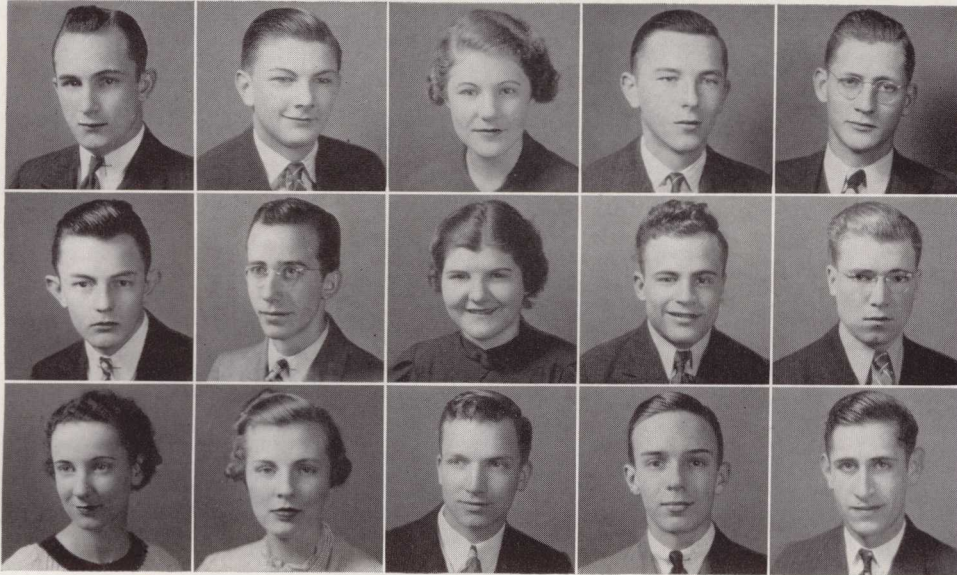
*Though time may pass o'er these dear halls
We'll still come back to thee
And still we'll cherish memories of
Our days at Y. H. C.*

*We're true to thee, dear Y. H. C.
Thy fame is our delight,
We hail thee, Alma Mater, dear,
Thy Purple and thy White.*



Activities

FORENSIC CLUB



Officers

FARGASON *President*
 SMITH *Vice-President*
 TOLAR *Coach*

PHI CHI CHAMPION DEBATERS

FARGASON SMITH LANCE

YOUNG HARRIS CHAMPION DEBATERS

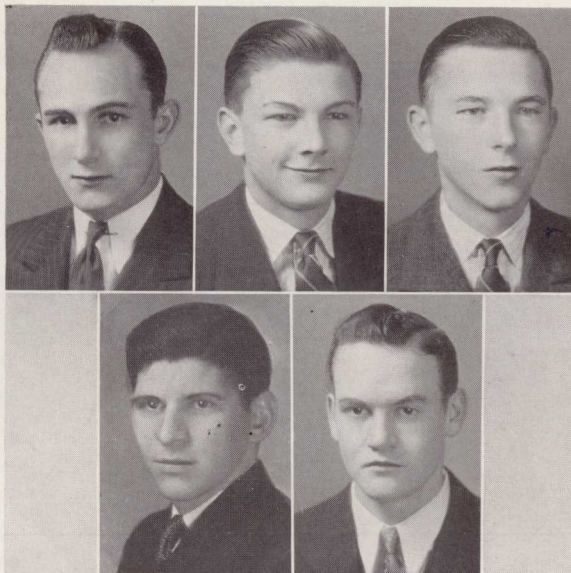
STOTT SCHAEFER CRANSHAW

INTERCOLLEGIATE DEBATERS

*BARRETT EDWARDS SECKINGER
 A. DAVIS MOZELY TURNER
 J. DAVIS RIVERS ZAMBOUNIS

*Not in picture.

PHI CHI SOCIETY
Champion Debaters



FARGASON

SMITH

LANCE

Officers

SHERIDAN

PERSONS*



*Winter and Spring Terms.

The 1937 ENOTAH

PHI DELTA SOCIETY
Officers



KEITH



KENNEY



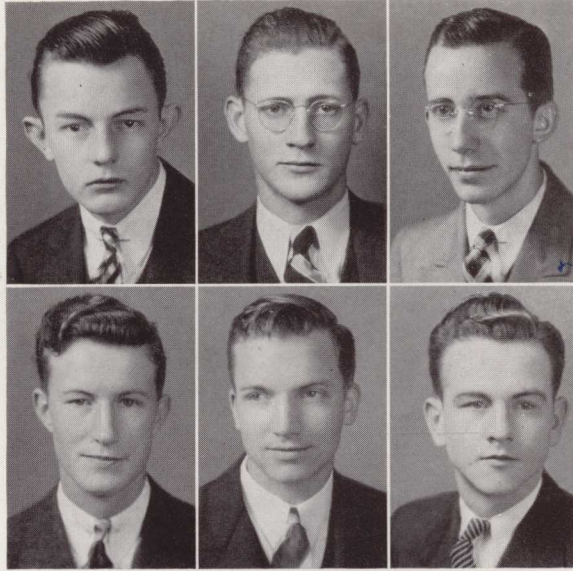
TURNER



BIM SHARP
Mascot



YOUNG HARRIS DEBATING SOCIETY
Champion Debaters



STOTT

SCHAEFER

CRANSHAW

GOLDEN

Officers
SECKINGER

BRUCE



The 1937 ENOTAH

SUSAN B. SOCIETY

Officers



DAVIS*

PECK

JO SHARP
Mascot



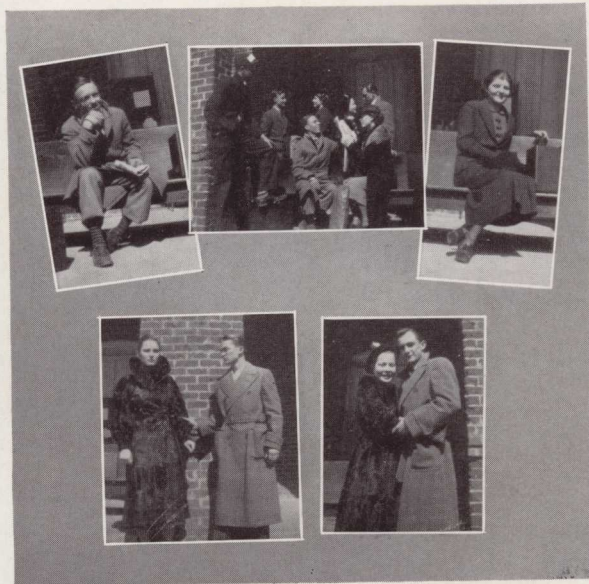
*Fall and Spring Terms.

The 1937 ENOTAH

MASQUERS' DRAMATIC CLUB



DAVIS, TURNER, KELLEY *Presidents*

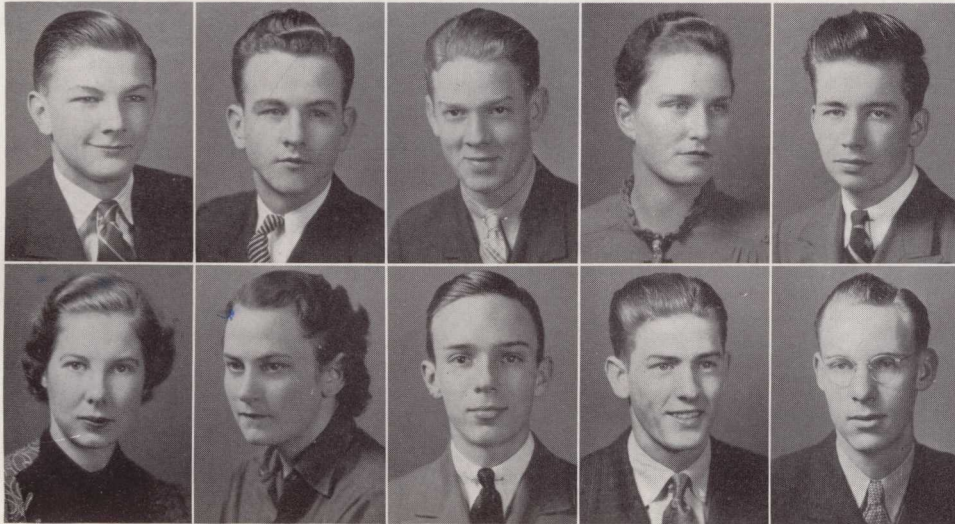


Scenes from "Ghost Train"

The 1937 ENOTAH

ENOTAH STAFF

SMITH	<i>Editor-in-Chief</i>
*MORGAN	<i>Assistant Editor</i>
BRUCE	<i>Business Manager</i>
J. ROGERS	<i>Assistant Business Manager</i>
WILKES	<i>Associate Editor</i>
CALDWELL	<i>Associate Editor</i>
EBERHARDT	<i>Associate Editor</i>
COLQUITT	<i>Literary Editor</i>
TURNER	<i>Art Editor</i>
W. ROGERS	<i>Advertising Manager</i>
SAYER	<i>Sports Editor</i>

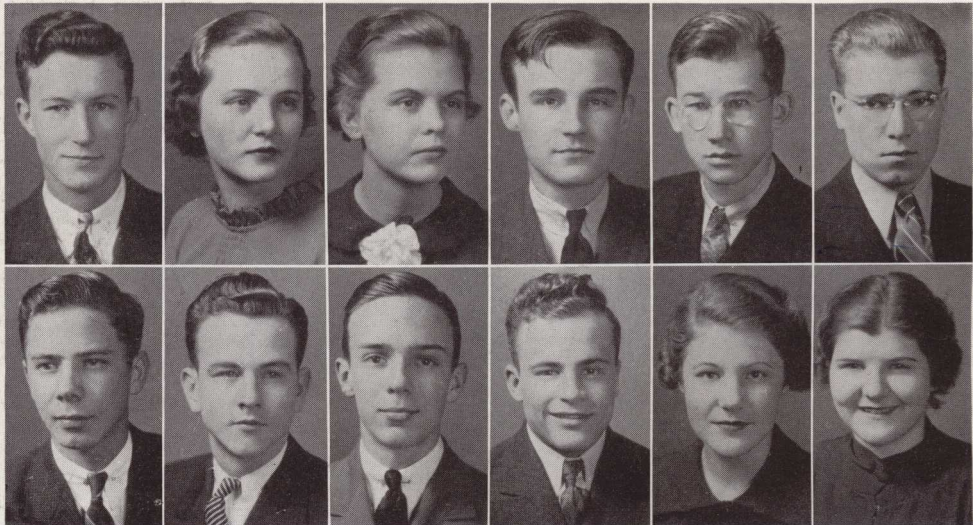


*Not in picture.

The 1937 ENOTAH

ENOTAH ECHOES STAFF

GOLDEN	<i>Editor-in-Chief</i>
*BUSBEE	<i>Assistant Editor</i>
FREEMAN	<i>Associate Editor</i>
THACKER	<i>Associate Editor</i>
GRIFFIN	<i>Associate Editor</i>
TABOR	<i>Associate Editor</i>
EDWARDS	<i>Literary Editor</i>
MADDOX	<i>Exchange Editor</i>
BRUCE	<i>Sports Editor</i>
TURNER	<i>Columnist</i>
DAVIS	<i>Business Manager</i>
KEITH	<i>Circulation Manager</i>
DAVIS	<i>Typist</i>



*Not in picture.

GIRLS' DORMITORY COUNCIL

Officers

WESTMORELAND *President*
TURNER *Vice-President*
KEITH *Secretary*

Council Members

WERNER	PAINÉ	JOHNSON
MOZLEY	FLANDERS	PETIT
EBERHARDT	NUNN	DAVIS
THOMAS	DAVIS	KELLEY
BOWEN	JACKSON	WILKES
	COPELAND	



The 1937 ENOTAH

INTERNATIONAL RELATIONS CLUB

Officers

WILLIAMS *President*
DAVIS *Vice-President*
STOTT *Secretary*

TURNER
PERSONS
JOHNSON
WILLIAMS
STOTT
KELLY
O. PEACOCK
EDWARDS
HUNTER
DENNIS
CRANSHAW
MORGAN
SECKINGER

NEEL
CALDWELL
WALKER
STRETCH
ATKINS
PEAVY
MCGRAW
NIX
P. PEACOCK
ZAMBOUNIS
HARRIS
SMITH
FARGASON



Left to right, start at bottom: Turner, Persons, Johnson, Williams, Stott, Kelly, O. Peacock, Edwards, Hunter, Dennis, Cranshaw, Morgan, Seckinger, Neel, Caldwell, Walker, Stretch, Atkins, Peavy, McGraw, Nix, P. Peacock, Zambounis, Harris, Smith, Fargason.

The 1937 ENOTAH

MUSIC CLUB



BILLYE WILKES *President*

CHOIR



EUGENIA WRIGHT *Director*

The 1937 ENOTAH

ART CLUB



ORCHESTRA



The 1937 ENOTAH

BAPTIST STUDENT UNION

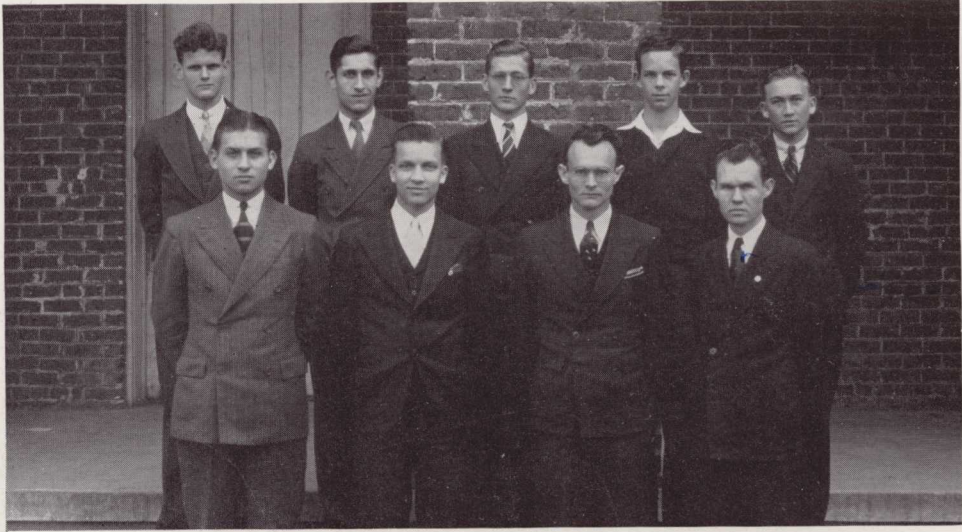


STUDENT VOLUNTEERS



The 1937 ENOTAH

MINISTERIAL ASSOCIATION



LIFE SERVICE BAND





Features

Young Harris College Library
Young Harris, Ga.

The 1937 ENOTAH



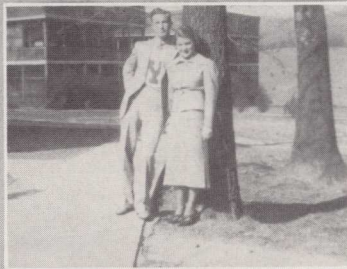
THREE'S A CROWD!



WHERE'S JACK?



GO WEST, YOUNG MAN!



KEITH THIS FOR GOLDEN MEMORIES



"LANCE" PUT OUR HEADS TOGETHER



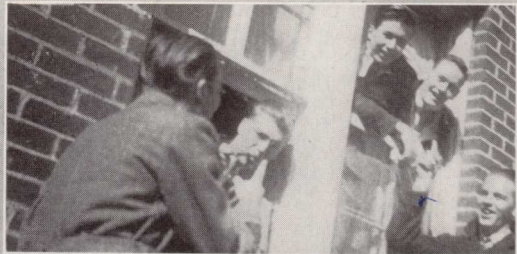
HE CRANSHAW YOU HOW TO MAKE LOVE WERNER LET HIM?



SHE GOT HER MANN



ZIEGFELD MISSED ALL THE WAY ROUND ON THIS!



DELTA PI EN PARTE



WELL-I, I RECKON...



COCA COLA, ORANGE CRUSH AND _____?



BOOGY! BOOGY!



WHO THREW THAT "DUCK" IN MY LAP?



WE'VE GOT OUR LOVE TO KEEP US WARM



KENNY UP A STUMP



APPRECIATION

We appreciate the cooperation
of the following firms and urge
the students to patronize them.

THE STAFF

Young L. G. Harris College

ENDING ITS FIFTY-FIRST SESSION MAY, 1937

A junior college under the control of the North Georgia Conference.

Twenty-three dollars and fifty cents a month pays all the charges except books and incidentals. Children of ministers and ministerial students do not pay tuition.

A catalog is sent on request

T. J. LANCE, *President*

F. M. HUNTER, *Dean*

L. C. ATKINS, *Registrar*

W. C. LEAKE, *Business Manager*

W. E. MATHESON

•
"A Good Store"

•
YOUNG HARRIS GEORGIA

Half a Century in Atlanta

McCORD-STEWART CO.

INCORPORATED

•
THE BLUE RIDGE COFFEE FOLKS

GAINESVILLE STEAM
LAUNDRY

•
GAINESVILLE GEORGIA

Davis - Washington Co.

•
Lumber and Building

Material

•
GAINESVILLE GEORGIA



**Pure
refreshment**

Junior College and High School
RINGS - PINS

MEDALS - CHARMS & TROPHIES - CUPS
BELT BUCKLES - INVITATIONS - CARDS

Furnished Young Harris by

HERFF-JONES CO.
H. S. CANFIELD

1560 N. Decatur Rd. Atlanta, Ga.

Hotel and Restaurant
Supply Co.

382 West Peachtree St.

ATLANTA GEORGIA

The Citizens Bank

GAINESVILLE, GA.

MARTIN MOTOR CO.

CHEVROLET

GAINESVILLE

GEORGIA

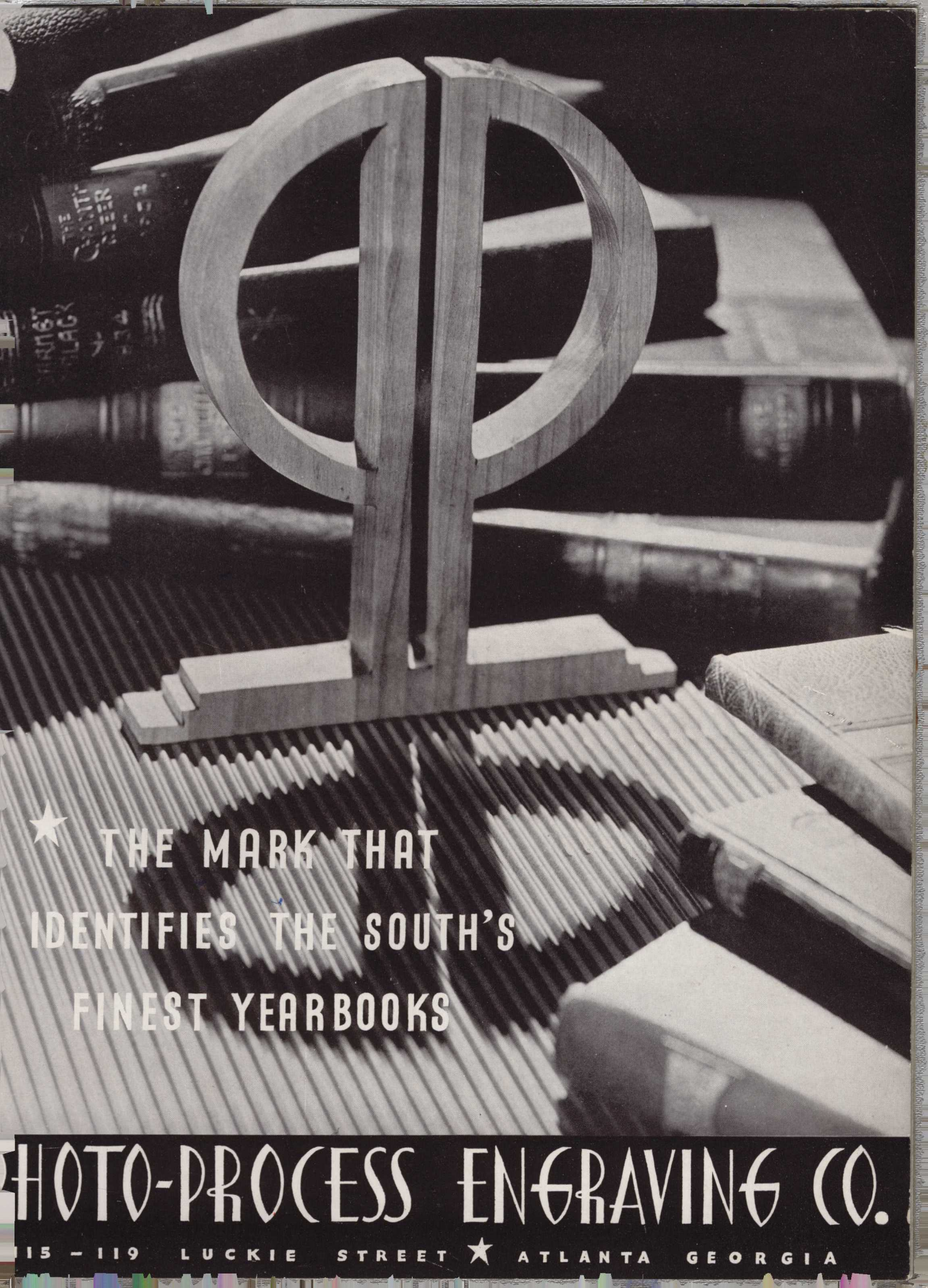
CROSS PRINTING CO.

We print anything but greenbacks—we expect our customers to furnish them.

C
R
CROSS PRINTING & PUBLISHING CO.
S
S
Clayton, Ga.

We appreciate the co-operation
of the student body and the staff
in helping us publish the 1937
ENOTAH.

The Staff



★ THE MARK THAT
IDENTIFIES THE SOUTH'S
FINEST YEARBOOKS

PHOTO-PROCESS ENGRAVING CO.

115 - 119 LUCKIE STREET ★ ATLANTA GEORGIA

In Printing

THERE ARE MANY REASONS WHY
SUCCESSFUL ANNUALS REQUIRE
THE SERVICES OF EXPERIENCED
AND EXPERT CRAFTSMEN

FOOTE & DAVIES CO.

HAVE THESE SERVICES . . . *and*
the most necessary components of
all really fine books including
A SPECIAL ANNUAL SALES
AND SERVICE ORGANIZATION
CREATIVE DESIGNERS AND
LAYOUT ARTISTS • ABUNDANT
EQUIPMENT . . . MODERN AND
COMPLETE • PRICES REPRESENTING
MAXIMUM IN VALUE



ATLANTA
GEORGIA

