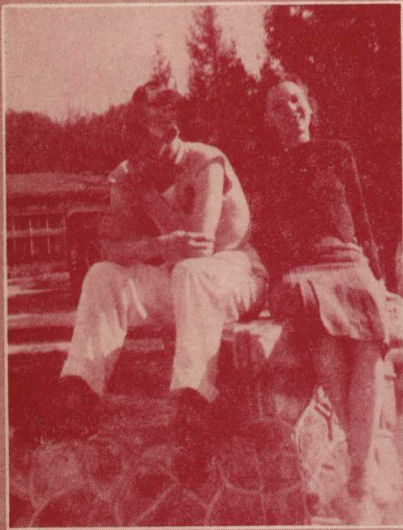
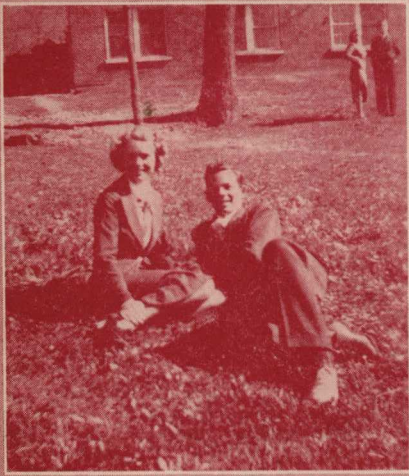


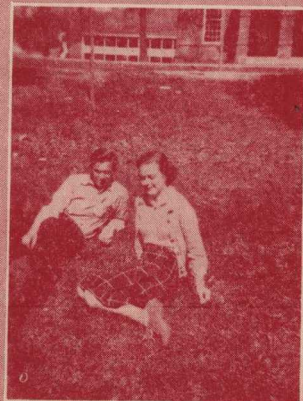
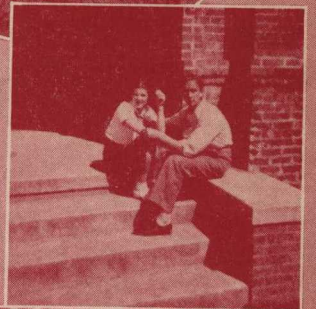
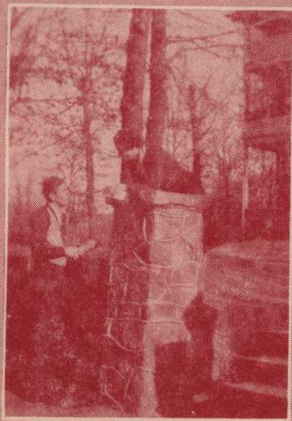
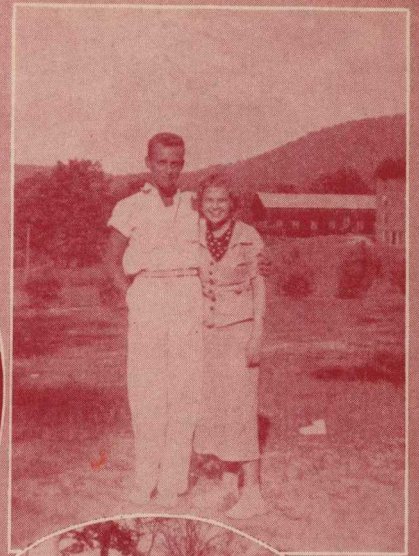
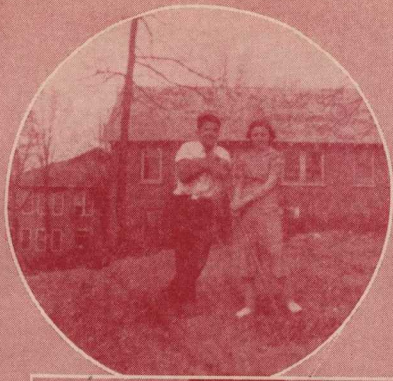


THE

ENOTAH

1938





Young Harris College Library
Young Harris, Ga.

The
1938 Enotah

Copyright

1938

By

SENIOR CLASS

HOMER MORGAN

Editor

JACK ROGERS

Business Manager

YOUNG L. G. HARRIS
COLLEGE

Young Harris, Georgia

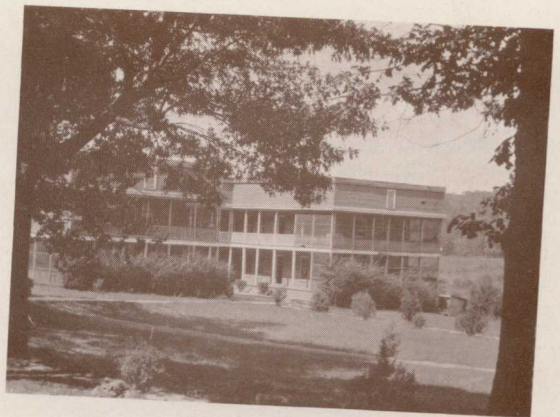
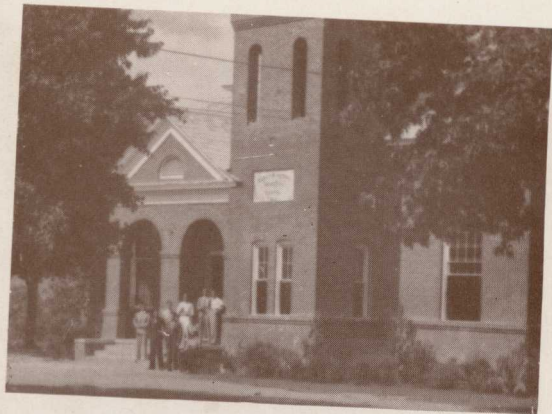


In 1938

The Enotah

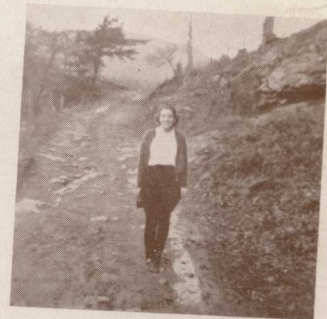
Offers a Year
of Recollections

8789



Foreword

May the intimate touches of your college days, that the Staff attempts to portray here, paint for you a picture of memories that will become more precious to you with age and spur you onward to a greater enjoyment of life.





To

PROF. J. WORTH SHARP

In grateful recognition of your constant friendship for the student body, of your abiding love for Young Harris College, and of your tireless contributions to the finer things of the institution, we dedicate this ninth volume of the ENOTAH.

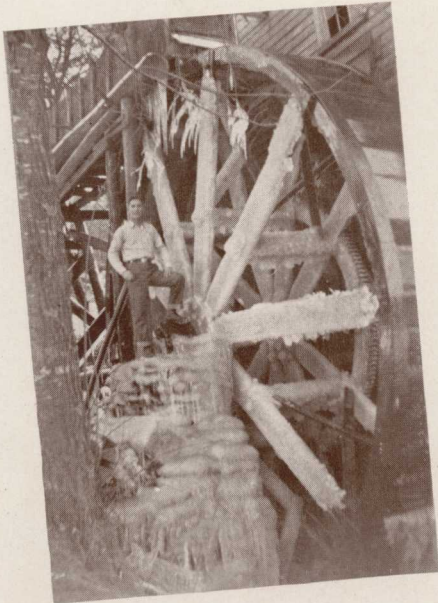
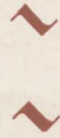
HOMER MORGAN
Editor



Dedication



Contents



Book One
THE SCHOOL

Book Two
CLASSES

Book Three
ATHLETICS

Book Four
ACTIVITIES

Book Five
FEATURES





The School

The *Enotah* Scouts the Faculty

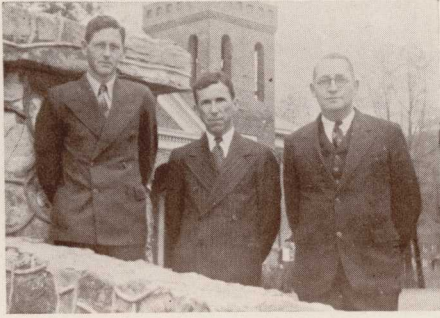
T. J. LANCE, M.A.
President

When the rules go off . . . ??



F. M. HUNTER, M.A.
Dean

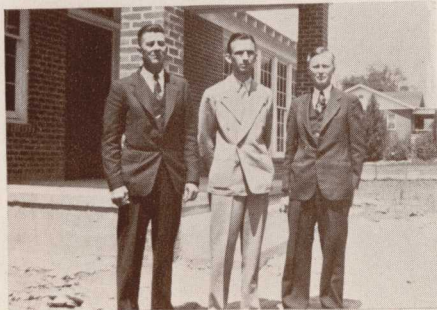
What would Thorndike say
about this? . . . The natural
instinct of man!



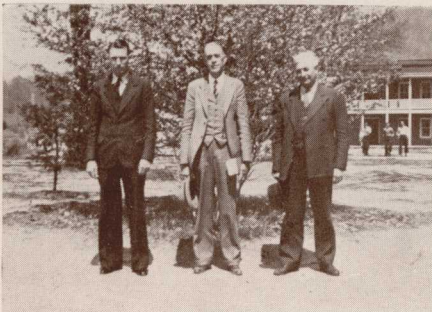
J. W. SHARP, M.A. *History*
 W. L. DANCE, M.A. *English*
 J. C. CAMP, M.A. *English*



VERDIE MILLER, M.A. *Mathematics*
 W. S. MANN, A.B. *Mathematics*
 HELEN BURNS, A.B. *Commerce*



LESLIE JONES, M.S. *Education*
 H. M. DOBBS, A.B. *Chemistry*
 S. B. TOLAR, M.S. *Physics*



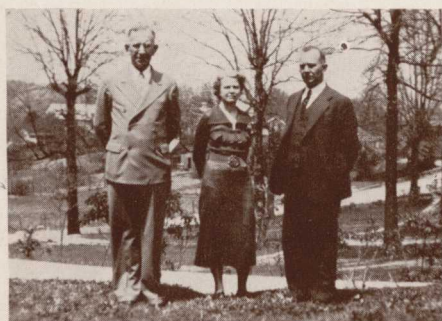
H. L. BUTT, A.B. . . . *High School Principal*
 REV. C. D. READ, M.A. . . *Religious Education*
 E. L. ADAMS, A.B., . . . *Mathematics and Bible*



WILMA COLEMAN, M.A. *English*
LAURA BELLE DESHIELDS, M.A. *French*
HILDA MCCURDY, M.A. *French*
EUGENE DODDS, A.B. *History*



EUGENIA WRIGHT, B.M. *Music*
IVY GREEN *Art Department*
NELL VEATCH, A.B. *Speech*

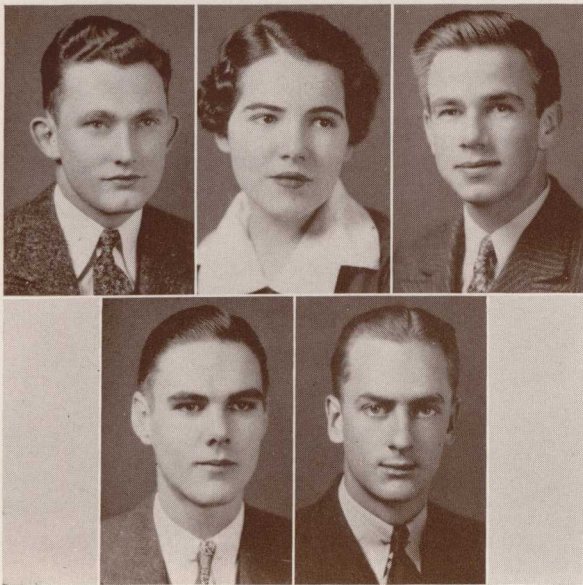


L. C. ATKINS, A.B. *Registrar*
MRS. S. B. TOLAR, A.B. *Librarian*
RALPH MOORE *Business Manager*



MRS. J. A. SHARP *Matron*

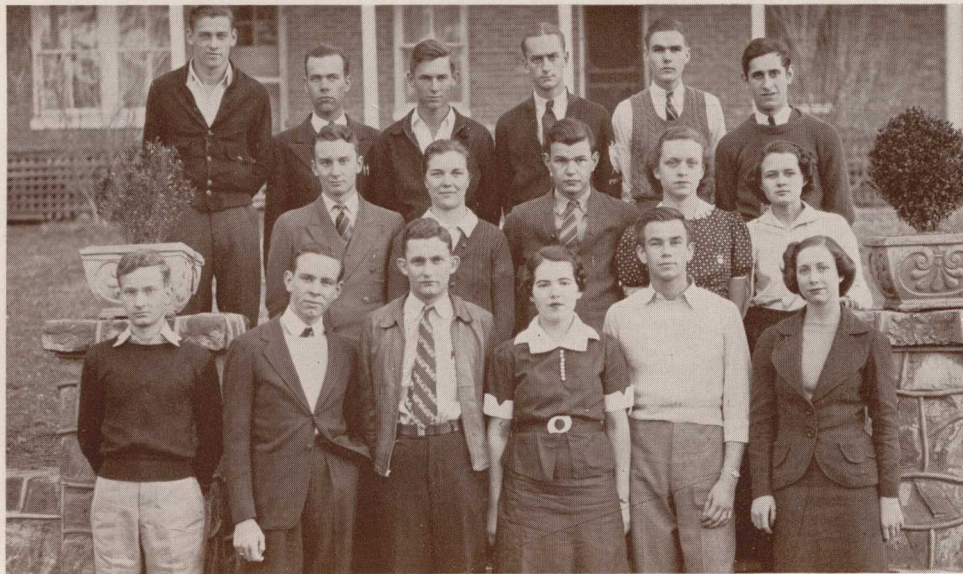
OUR STUDENT LEADERS



AMOS
WALKER
TUMLIN
DAVISON
SCOTT

OFFICERS

- MAC AMOS *President*
- LOUISE TUMLIN *Secretary*
- BILL SCOTT *Vice-President*
- DICK WALKER *Sergeant-at-Arms*
- RUSSELL DAVISON, *Solicitor-General*



FIRST ROW—Speir, Cook, Amos, Tumlin, Scott, Spooner.
 SECOND ROW—Patillo, McNalley, Stretch, Shockley, Williams.
 THIRD ROW—Malone, Dunnagan, Wiley, Davison, Walker, Zambounis.

1938 ENOTAH

SUPREME COURT

FACULTY JUSTICES

Chief Justice

DEAN HUNTER

Associate Justices

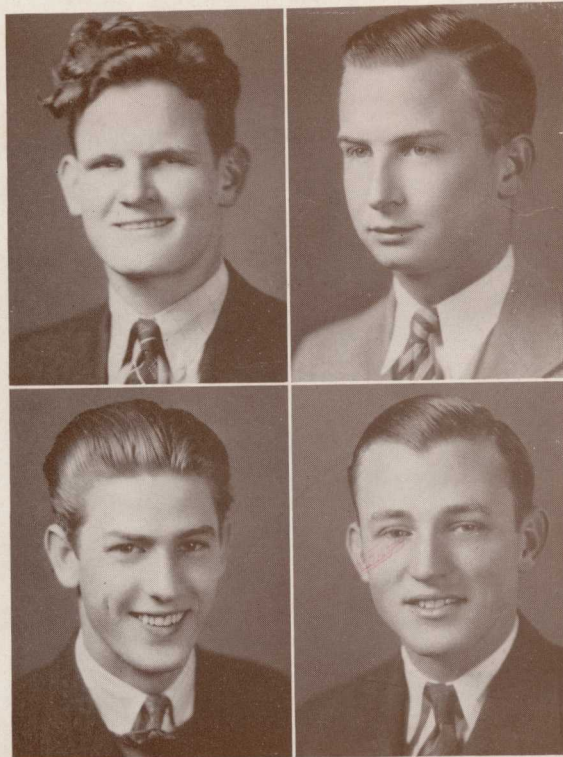
J. W. SHARP

LESLIE JONES

J. C. CAMP

H. L. BUTT

STUDENT JUSTICES



CRAWFORD
ROGERS

STONE
WILLIAMS



The Classes



McAFEE
President

LOWERY
Secretary

ATKINS
Vice-President

SENIOR CLASS HISTORY

"We're true to thee, dear Y. H. C.

Thy fame is our delight"

ON SEPTEMBER 8, 1936, about one hundred members joined the "Freshman Troop" at Young Harris College. We chose as our Commander, Bob Lance. The other official ranks were filled by Lawrence Atkins and Winifred Townsend, all very capable and energetic. With the encouragement of the faculty and the so-called Senior Company, we, the "Freshman Company" soon became a part of the Young Harris College Army.

Our greatest combat during the "Freshman" year was English—but with the use of midnight oil and other strange weapons which have almost passed out of use by now, we "shot" Prof. Camp and Prof. Dance and conquered this foe.

This year proved to be a very successful one. Our allies, the Seniors, retired from service in May, however, and we were left alone to hold the trenches. Nearly all of us obtained a three-months' furlough to go home.

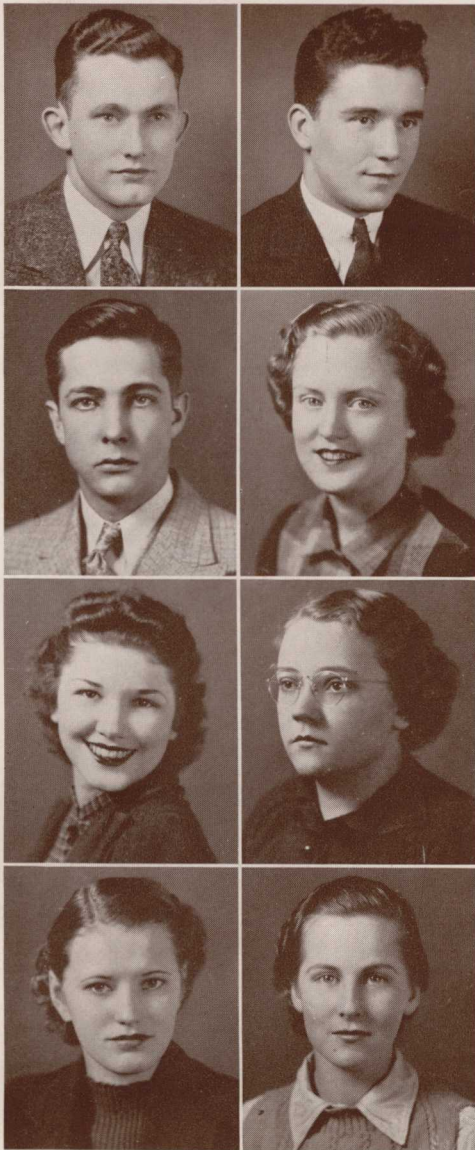
On September 27, 1937, we fell in line as the Senior Company. We were smaller in number, some having deserted for various reasons. Immediately we selected a new Commander, "Sonny" McAfee, and two other officers, Lawrence Atkins and Marie Lowery, to command our troop for the year.

Science proved to be a bitter enemy—even worse than English. The battle raged furiously. Heroic enemies right and left—Chaucer, Thorndike, and Newton! But victory was sweet at last!

On January 12, 1938, we secured the help of our permanent allies, the faculty, and overthrew the Monarchy of Final Exams. This was a great step in the accomplishment of our democratic ideals.

We entered the Spring Quarter in April—just three months until we would be able to win an overwhelming victory. On June 13, 1938, the Peace Treaty of Diploma was signed, and our troop disbanded to return to their respective homes—some in glorious triumph and some in ignominious defeat.

THE ASSOCIATE EDITORS.



AMOS	ATKINS
BARRETT	BARRON
BOLES	BROWNLOW
BRANNON	BROWNE

SENIORS

MAC AMOS

"MAC"
LaGrange, Ga.

"His strength is to sit still."

Phi Chi; Washington Birthday Speaker, '38; President of Student Body, '37-'38; International Relations Club; B. S. U.

LAWRENCE ATKINS

"LONNIE, JR."
Young Harris, Ga.

"Practice makes perfect in drumming as in any other art."

Phi Chi; Vice-President of Senior Class; International Relations Club, President, '37-'38; *Enotah Echoes* Staff; Gamma Alpha Journalism Club, Secretary, '37-'38; Orchestra; B. S. U.

HUGH BARRETT

"PEE WEE"
Barwick, Ga.

"A noble fool was never in a fault."

Y. H. D. S.; Intercollegiate Debater; Forensic Club; Student Volunteers; B. S. U.

MELBA REE BARRON

"REE"
Cumming, Ga.

"Those who know thee, know all words are faint."

Susan B.; Intercollegiate Debater; Forensic Club, Secretary, '37-'38; Dormitory Council; Life Service Band, Vice-President Winter Quarter; Student Volunteers; Choir; Music Club.

DOROTHY BOLES

"DOT"
Duluth, Ga.

"Beauty is natural superiority."

Phi Delta.

BONNIE BROWNLOW

"BONNIE MAE"
New Holland, Ga.

"Why worry, things will happen anyway."

Phi Delta; ENOTAH Staff, Associate Editor; Superlative.

JULIETTE BRANNON

"IDA"
Cedartown, Ga.

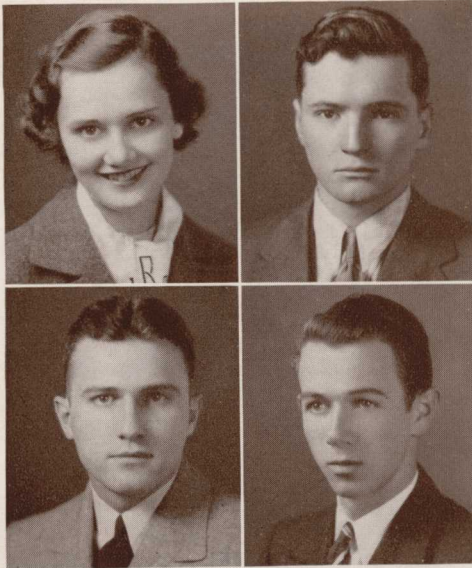
"Music has charm alone for peaceful minds."
Phi Delta; Student Volunteers; Music Club; Choir.

BLANCHE BROWNE

"SARKY"
Clermont, Ga.

"Her voice was ever soft, gentle, and low—an excellent thing in a woman."

Phi Delta.



BUFORD

BURGESS

BUSBEE

CALDWELL

EVELYN CARPENTER

"EVELYN"

Toccoa, Ga.

"Quietness is best."

Susan B.; Life Service Band; Music Club.

WARREN CHILDS

"SNAKE-BIT"

Locust Grove, Ga.

"Every man is odd."

Phi Chi.

MARY CLANCY

"MARY"

Townsend, Ga.

"A beautiful face is a silent commendation."

Susan B., Secretary Fall Quarter, '37, President Winter Quarter, '38; Dormitory Council, Secretary, '37-'38; Life Service Band; Student Volunteers.

RAYMOND COOK

"MAESTRO"

Harlem, Ga.

"Style is the man himself."

Phi Chi, Champion Debater, Clay Medal Winner, '37; Forensic Club; International Relations Club; Student Council, '37-'38; Track Team, '36-'37, '37-'38; Orchestra, Director.

JOSEPHINE BUFORD

"JO"

Macon, Ga.

"When in doubt, keep on talking."

Susan B., Vice-President Winter Quarter, '38; Masquers' Dramatic Club; Intercollegiate Debater; Forensic Club; *Enotah Echoes* Staff; Dormitory Council; Life Service Band; Student Volunteers; B. S. U.

LEO BURGESS

"LEO"

Eastanollee, Ga.

"Preparedness is his motto."

Y. H. D. S.; Ministerial Association; C. W. G., '36-'37.

FRANK BUSBEE

"SWEET PETUNIA"

Atlanta, Ga.

"Drink not too deep at the fountain of knowledge, lest thou be strangled."

Phi Chi, Secretary Winter and Spring Quarters, '37-'38; *Enotah Echoes* Staff, Editor-in-Chief; Masquers' Dramatic Club, President Winter Quarter, '38; Gamma Alpha Journalism Club, President, '37-'38; International Relations Club; Manager of Wrestling Team; Superlative.

WILLIAM CALDWELL

"BILL"

Blairsville, Ga.

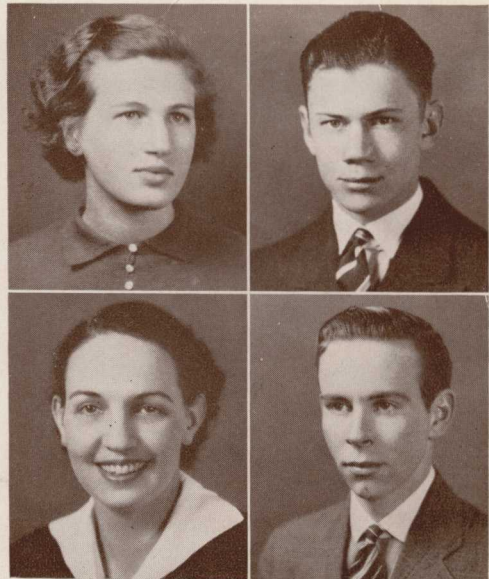
"I see much, but I say little, and do less."

CARPENTER

CHILDS

CLANCY

COOK



WATSON CRAWFORD

"WATT"

Hurtsboro, Ala.

"Don't put things off, put them over."

Y. H. D. S., Champion Debater; Forensic Club, President, '38; International Relations Club; Supreme Court; Ministerial Association; Student Volunteers; B. S. U. Track Team, '36-'37, '37-'38; C. W. G., '37.

THOMAS DAVIS

"TOM"

Chula, Ga.

"Slow to argue, but quick to act."

Y. H. D. S.; Music Club; Choir; Student Council, '37-'38.

RUSSELL DAVISON

"RUSS"

Columbus, Ga.

"A tall man may reach great heights."

Phi Chi; Student Council, Solicitor-General, '37-'38; B. S. U.

IMOGENE DEAN

"GENE"

Toccoa, Ga.

"She that knows most says least."

Susan B.; ENOTAH Staff, Typist; Life Service Band.

CARL DODDS

"LITTLE BROTHER"

Atlanta, Ga.

"Better be happy than wise."

Y. H. D. S.; Enotah Echoes Staff; International Relations Club; Gamma Alpha Journalism Club; Ministerial Association.

IDA ELDER

"JULIETTE"

Griffin, Ga.

"Self-confidence is the first requisite to great undertakings."

Phi Delta; Music Club; Dormitory Council; Student Volunteers.

WALTER FLANDERS

"WALT"

Wrightsville, Ga.

"He argues high, he argues low, he argues all around him."

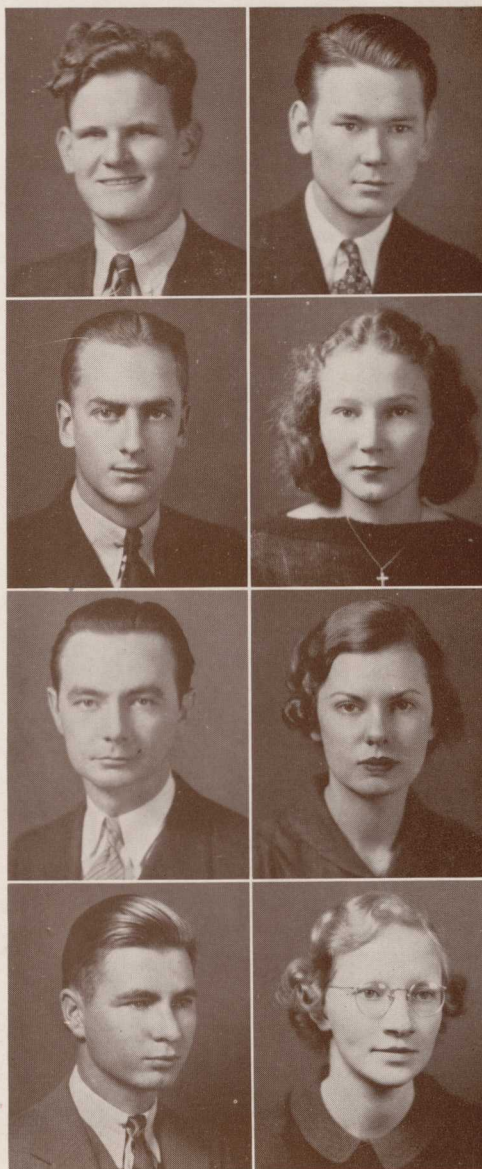
Y. H. D. S.

SARAH GARRETT

"SARAH"

White Plains, Ga.

"Dignified and very full of common sense."
Susan B.; Life Service Band, Vice-President Winter Quarter, President Spring Quarter; Dormitory Council, '38; Superlative.



CRAWFORD

DAVIS

DAVISON

DEAN

DODDS

ELDER

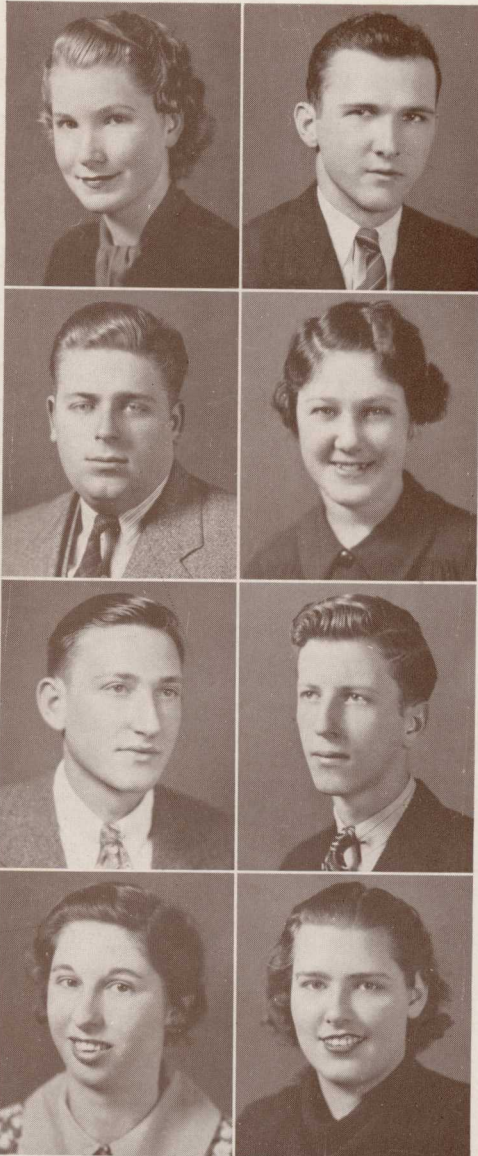
FLANDERS

GARRETT

SENIORS

1938 ENOTAH

141



GOOLSBY	GREGORY
GRIMES	HARRISON
HOFFMAN	HUNTER
JACKSON	B. JONES

SENIORS

MARGARET GOOLSBY

"GOOBY"

Carnesville, Ga.

"She half consents who silently denies."
Susan B.; Student Volunteers; Life Service Band.

EUGENE GREGORY

"GREG"

Eatonton, Ga.

"Character is much easier kept than recovered."
Y. H. D. S., Secretary Winter Quarter, '38;
Vice-President Spring Quarter, '38; B. S. U.;
Student Volunteers; C. W. G., '37.

J. BURCH GRIMES

"FAT"

Springhill, Tenn.

"On with the dance, let joy be unconfined."
Phi Chi; Cheer Leader; Superlative.

DOROTHY HARRISON

"DOT"

Macon, Ga.

"Laugh and be well."
Susan B.; Life Service Band.

WALTER HOFFMAN

"DOY"

Rhine, Ga.

"There is such a thing as a man being too proud to fight."
Phi Chi; International Relations Club; Superlative; Supreme Court, Spring Quarter, '38.

HOMER HUNTER

"FANNIE"

Young Harris, Ga.

"Science is an organized body of knowledge."
Phi Chi, Vice-President Spring Quarter, '38;
Enotah Echoes Staff; Intercollegiate Debater;
Forensic Club; International Relations Club,
Secretary, '38; B. S. U., President, '37-'38;
Gamma Alpha Journalism Club, Vice-President,
'37-'38; Orchestra, Manager.

EVELYN JACKSON

"EVELYN"

Rayle, Ga.

"Reading is to the mind what exercise is to the body."
Phi Delta; Life Service Band; Basketball,
'36-'37.

BLANCHE JONES

"JONES"

Middleton, Ga.

"Silence is golden."
Phi Delta; Life Service Band.

GARRIS JONES
 "JONES"
 Eatonton, Ga.

"The mind that would be happy must be great."
 Y. H. D. S., B. S. U.; C. W. G., '36-'38.

AMELIA KIKER
 "KIKER BABE"
 Blue Ridge, Ga.

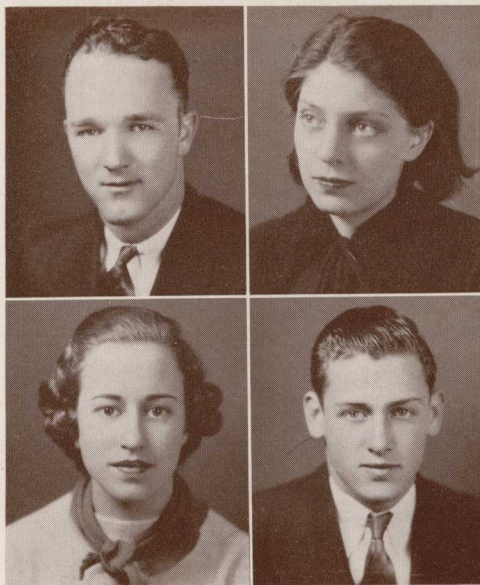
"Silence sweeter is than speech."
 Phi Delta.

MARIE LOWERY
 "MARIE"
 Ocoee, Tenn.

"She touches nothing, but she adds charm."
 Phi Delta, President Fall and Winter Quarters;
 Masquers' Dramatic Club, Vice-President Fall
 Quarter; Intercollegiate Debater; Forensic
 Club; Secretary of Senior Class; Student Vol-
 unteers; B. S. U.; Superlative.

I. V. MALONE
 "MALONE"
 Monticello, Ga.

"He's a friend, faithful and just."
 Phi Chi; Student Volunteers; Student Coun-
 cil; B. S. U.; Track Team, '36-'37; C. W. G.,
 '36-'37.



G. JONES

KIKER

LOWERY

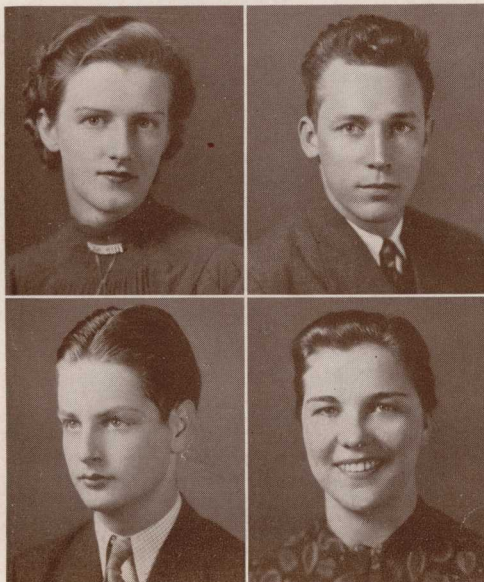
MALONE

MAYFIELD

McAFEE

McCARVER

McNALLEY



SAVANNAH MAYFIELD
 "NANNA"
 Monroe, Ga.

"The best of her is diligence."
 Susan B.; Dormitory Council, '37-'38; Life
 Service Band.

FRANK McAFEE
 "SONNY"
 Macon, Ga.

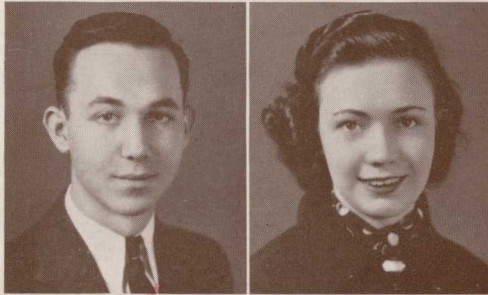
"Personality will carry you anywhere."
 Phi Chi, Secretary Fall Quarter, Vice-Presi-
 dent Winter Quarter, President Spring Quar-
 ter; President of Senior Class; *Enotah Echoes*
 Staff; Gamma Alpha Journalism Club; Inter-
 national Relations Club; B. S. U.; C. W. G.,
 '37.

CLYDE McCARVER
 "P. C."
 Vidette, Ga.

"True wit never made us laugh."
 Music Club; Choir; Ministerial Association;
 Student Volunteers.

ELIZABETH McNALLEY
 "MAC"
 Chickamauga, Ga.

*"She is a good combination of fun, sport, and
 brain."*
 Phi Delta; Music Club; Choir; Basketball, '36-
 '37; Student Volunteers; B. S. U.; Superlative.



McRAE

MOONEY

MOORE

MORGAN

MORRIS

MORTON

MOULDER

PATILLO

BETTY McRAE

"BETTY"

Homosassa, Fla.

"Knowledge comes, but wisdom lingers."
Phi Delta, President Spring Quarter; Music Club; Gamma Alpha Journalism Club; Forensic Club; Intercollegiate Debater; B. S. U.; Superlative.

CHARLES MOONEY

"CHARLES"

Tucker, Ga.

"Our patience will achieve more than our force."

Y. H. D. S.; Student Volunteers.

MARY EMMA MOORE

"MARY EMMA"

Cedar Grove, Ga.

"Sweetness is her everlasting charm."
Susan B.; Life Service Band.

HOMER MORGAN

"DUDE"

Doraville, Ga.

"Never love unless you can bear with all the faults of man."

Y. H. D. S., Champion Debater; Forensic Club, Vice-President, '37-'38; ENOTAH Staff, Editor-in-Chief; Masquers' Dramatic Club, Secretary and Treasurer, '37-'38; International Relations Club; Student Volunteers, Vice-President, '37-'38; Ministerial Association, President Winter Quarter, '38.

ALBERT MORRIS

"DINK"

Young Harris, Ga.

"Ambition dares not stoop."

Y. H. D. S., President Fall and Winter Quarters, Washington Birthday Speaker, '38; Masquers' Dramatic Club, President Spring Quarter, '38; International Relations Club; *Enotah Echoes* Staff, Business Manager; Gamma Alpha Journalism Club; Student Volunteers; B. S. U.

HELEN MORTON

"MORTON"

Atlanta, Ga.

"A kindness is never lost."

Susan B.; Student Volunteers; B. S. U.

WYNELLE MOULDER

"WYNELLE"

Duluth, Ga.

"Her face is fair, her person pleasing, her temper amiable, her heart kind."

Phi Delta.

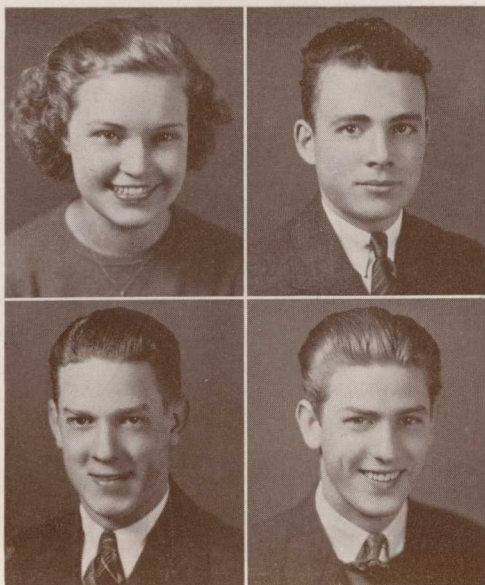
OLIN PATILLO

"PATTLE-LO"

West Point, Ga.

"Let him who knows how ring the bells."
Phi Chi; International Relations Club; Student Council, '37-'38; Student Volunteers; B. S. U.; Basketball, '36-'37, '37-'38.

SENIORS



PECK

READ

J. ROGERS

W. ROGERS

JUNE PECK

"PECK"

Trion, Ga.

"If all the folks were as happy as she, what a wonderful place this world would be."

Phi Delta, Vice-President Spring Quarter, '38; Masquers' Dramatic Club, Vice-President Spring Quarter, '38; Art Club; Cheer Leader, '37-'38; B. S. U.; C. W. G., '37.

CHARLES REID

"PREACHER"

Young Harris, Ga.

"A fresh, a free, a friendly man."

Phi Chi; Student Volunteers; B. S. U.; International Relations Club.

JACK ROGERS, JR.

"JACK"

Gainesville, Ga.

"He makes people pleased with him by first making them pleased with themselves."

Phi Chi; International Relations Club; ENOTAH Staff, Business Manager, '37-'38.

WILLIAM ROGERS

"BILLY"

Gainesville, Ga.

"Quietness and confidence is your strength."
Phi Chi, President Fall Quarter; Supreme Court; ENOTAH Staff, '37; B. S. U.

MARY JANE ROLLINS

"ROLLINS"

Moreland, Ga.

"The secret of life is in art."

Susan B., Vice-President Spring Quarter; Art Club, President, '37-'38; Dormitory Council, '37-'38; Life Service Band, Vice-President Spring Quarter; Student Volunteers; B. S. U.

ROLLINS

ROSSER

SASSER

SAYER

EUGENE ROSSER

"GENE"

Lawrenceville, Ga.

"Thinking is an idle waste of thought."

Phi Chi; Music Club; Choir; Baseball, '36-'37, '37-'38.

MARGERY SASSER

"MARGIE"

Cairo, Ga.

"Love is a beautiful thing."

Phi Delta, Vice-President Fall Quarter, Secretary Spring Quarter, '37-'38; Masquers' Dramatic Club; Music Club, Vice-President, '37-'38; Gamma Alpha Journalism Club; *Enotah Echoes* Staff; Student Volunteers; B. S. U.

MARY ANNIS SAYER

"QUASIMODO"

Bowersville, Ga.

"As merry as the day is long."

Phi Delta; Dormitory Council, '37-'38.



Young Harris College Library
Young Harris, Ga.

GLENN SCALES

"FISH SCALES"
Hartwell, Ga.

"A nice, unparticular man."
Y. H. D. S.; Student Volunteers; B. S. U.

WILLIS SCOTT

"BILL"

Atlanta, Ga.

"Surely never did there live on earth a man of kindlier nature."

Phi Chi, Champion Debater, Vice-President Fall Quarter, '37; Forensic Club; Vice-President of Student Body; Masquers' Dramatic Club, President Fall Quarter, '37; Wrestling Team, '36-'37, '37-'38; Superlative.

MARTHA SHOCKLEY

"SHOCKLEY"

Manchester, Ga.

"The only way to have a friend is to be one."
Susan B.; President of Dormitory Council, '37-'38; Student Council, '37-'38; Masquers' Dramatic Club; Life Service Band, President Fall and Winter Quarters, '37-'38; B. S. U.; Student Volunteers.

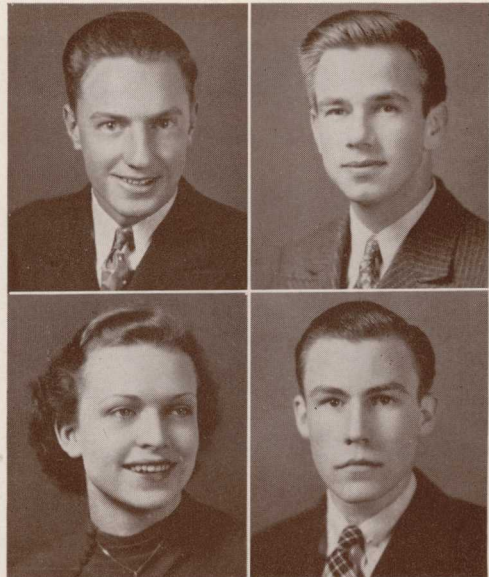
CHARLES SMITH

"CHARLIE"

Albany, Ga.

"Don't trouble trouble until trouble troubles you."

Y. H. D. S.; Intercollegiate Debater; Forensic Club; International Relations Club; Student Volunteers.



SCALES

SCOTT

SHOCKLEY

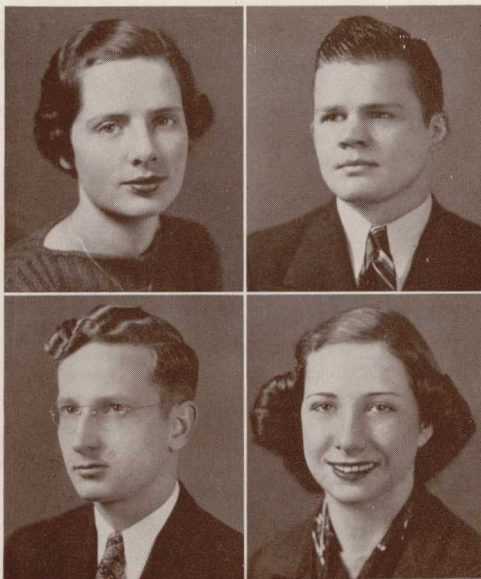
C. SMITH

F. SMITH

P. SMITH

SPEIR

SPOONER



FRANKIE RUTH SMITH

"FRANKIE"
Cordele, Ga.

"There are not many things cheaper than supposing and laughing."

Susan B.; Music Club; Dormitory Council, '37-'38; ENOTAH Staff, Associate Editor; Student Volunteers.

PAUL SMITH

"POPEYE"
Atlanta, Ga.

"The strength of twenty men."

Phi Chi, President Winter Quarter, '38; International Relations Club; Gamma Alpha Journalism Club; *Enotah Echoes* Staff; Wrestling Coach, '36-'37, '37-'38; Superlative.

RALPH SPEIR

"RED"

Savannah, Ga.

"A man of mark!"

Phi Chi, Champion Debater; Forensic Club; International Relations Club; Student Council, '37-'38; Manager of Basketball Team, '37-'38.

LILA MAE SPOONER

"SOT"

Iron City, Ga.

"As her own simple self she is best."

Phi Delta; Student Council, '37-'38; Music Club.

BURTON STANFORD

"BURT"

Waverly Hall, Ga.

"Bashfulness is an ornament to youth."

Phi Chi; Student Volunteers; B. S. U.; Basketball, '36-'37; Baseball, '36-'37, '37-'38.

SARA STANTON

"SHORTY"

Newborn, Ga.

"Precious things are wrapped up in small packages."

Phi Delta; ENOTAH Staff, Associate Editor; Student Volunteers.

EVERETTE STIPE

"STIPE"

Vienna, Ga.

"Such joy ambition finds."

Y. H. D. S., President Winter Quarter, '38; Enotah Echoes Staff, Business Manager Fall Quarter, '37; International Relations Club; B. S. U.

FRANCIS STONE

"FRISCO"

Thomson, Ga.

"A college joke to cure the dumps."

Phi Chi; Supreme Court; International Relations Club.

MARION STONE

"POOCH"

Monticello, Ga.

"No civilized man ever regrets a pleasure."

Phi Chi; Student Council, '37-'38.

JAMES EDWIN STRETCH

"STRETCH"

Waverly Hall, Ga.

"God's gift to the co-eds!"

Phi Chi, Washington Birthday Speaker, '38; Masquers' Dramatic Club, Vice-President Winter Quarter, '38; International Relations Club; B. S. U.; Superlative.

WESLEY THOMAS

"THORNDIKE"

Canton, Ga.

"Art is not a thing, it is a way."

Y. H. D. S.; ENOTAH Staff, Art Editor; Gamma Alpha Journalism Club; Art Club, Vice-President, '37-'38; Student Volunteers.

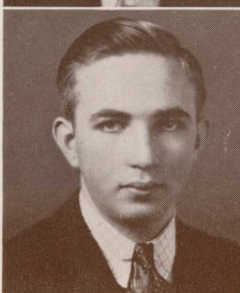
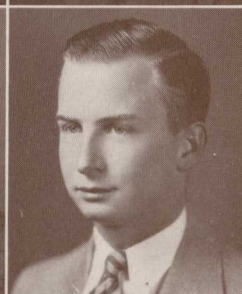
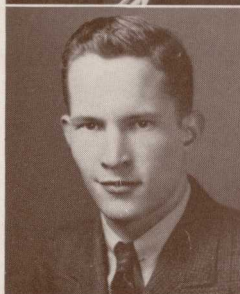
LOUISE TUMLIN

"LOU"

Gainesville, Ga.

"She's a friend to everyone, and enemies she has none."

Susan B., President Fall and Spring Quarters, '37-'38; Secretary of Student Body; Dormitory Council, Vice-President, '37-'38; Masquers' Dramatic Club; Choir; Music Club; Life Service Band; B. S. U.; Student Volunteers, Secretary, '37-'38; Superlative.



STANFORD

STANTON

STIPE

F. STONE

M. STONE

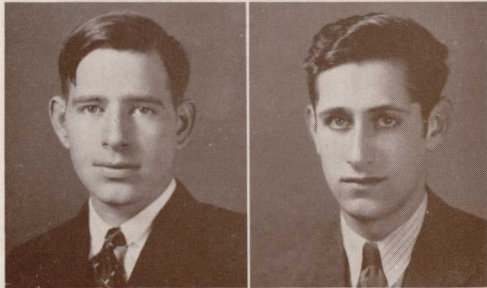
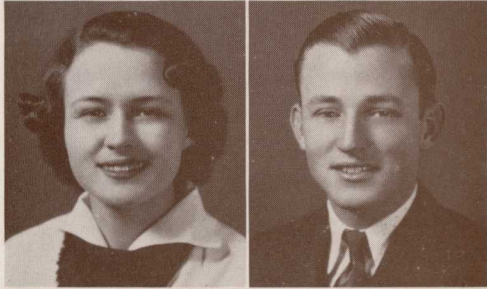
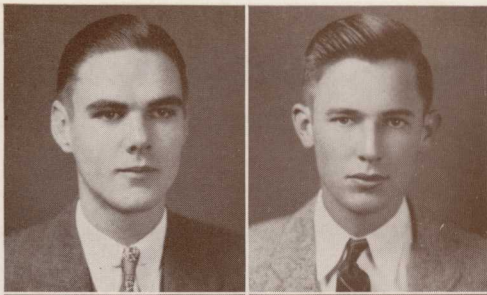
STRETCH

THOMAS

TUMLIN

SENIORS

1938 ENOTAH



WALKER
M. WILLIAMS
WILSON
WILEY
T. WILLIAMS
ZAMBOUNIS

RICHARD WALKER

"DICK"

Gainesville, Ga.

"Her smiling eyes with simple truth were stored for him."

Phi Chi; Student Council, Sergeant-at-Arms; B. S. U.; Student Volunteers.

ELBERT WILEY

"NAILS"

Thomson, Ga.

"True love is the ripe fruit of a lifetime."

Phi Chi; Student Council, '37-'38; B. S. U.; Baseball, '36-'37, '37-'38.

MAXINE WILLIAMS

"MAXINE"

Grovetown, Ga.

"Twas her thinking of others made you think of her."

Susan B., Vice-President Fall Quarter, '37; Student Council, '37-'38; Life Service Band; Student Volunteers; Superlative.

TAYLOR WILLIAMS

"TAYLOR"

Kingtree, S. C.

"Contact with manners is education."

Y. H. D. S., Vice-President Winter Quarter, '38; Supreme Court; Music Club; Choir; Orchestra, '36-'37, '37-'38; Student Volunteers.

HOMER WILSON

"WILSON"

Moundsville, Ala.

"What is food to one man may be fierce poison to others."

Y. H. D. S.; International Relations Club; Music Club; Choir; Student Volunteers.

JAMES AARON ZAMBOUNIS

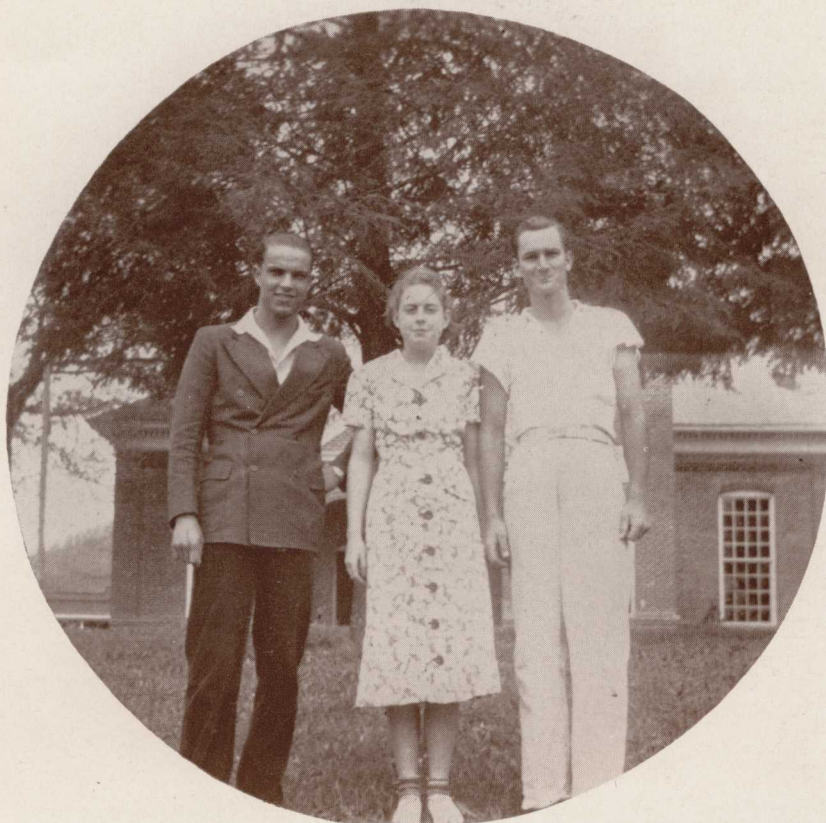
"JIMMY"

Atlanta, Ga.

"A man of letters, morals, parts."

Y. H. D. S., Champion Debater, Anniversarian, '37-'38, Clay Medal Speaker, '36-'37; Masquers Dramatic Club; Intercollegiate Debater, '36-'37; Forensic Club, '36-'37, '37-'38; Student Council, '35-'36, '36-'37, '37-'38; Music Club; Student Volunteers, President, '35-'36, '36-'37, '37-'38; B. S. U., Vice-President, '35-'36, '36-'37; Ministerial Association, Vice-President Fall Quarter, '36, President Fall Quarter, '37; Superlative.

SENIORS



AUSTIN
President

WARD
Secretary

HARRELL
Vice-President

The Officers of the

Freshman Class

FRESHMEN

RUTH ANDREW
Bryson City, N. C.
Phi Delta

MARY BRYANT
Ellijay, Ga.
Susan B

GLENN AUSTIN
Dunwoody, Ga.
Y. H. D. S.

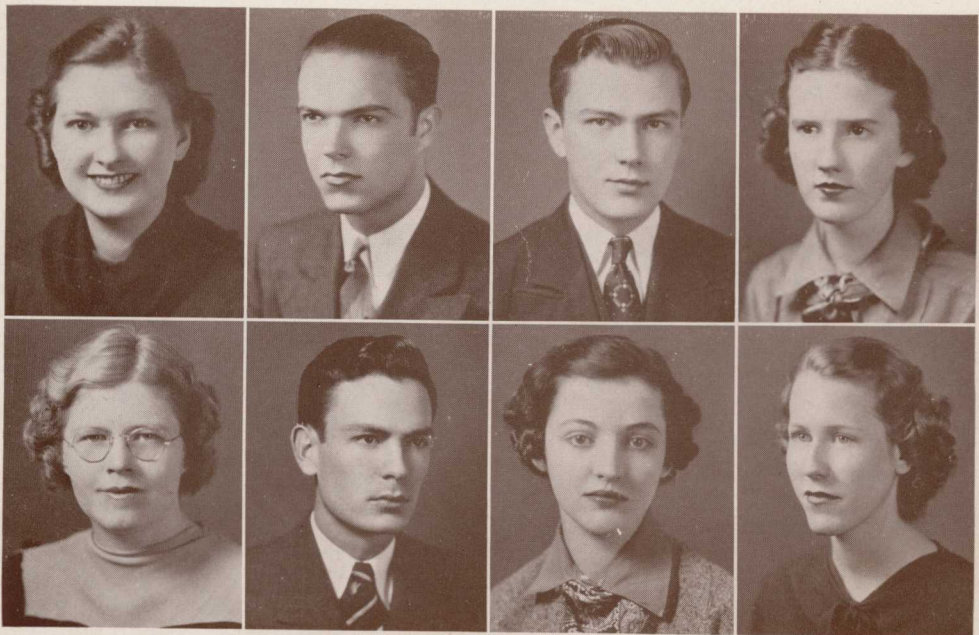
OSGOOD CLARK
Macon, Ga.
Phi Chi

JOHN BANKS
Griffin, Ga.
Y. H. D. S.

MARY ANN CONNER
Decatur, Ga.
Phi Delta

BETTY BASKIN
Blairsville, Ga.
Phi Delta

DORA CORNWELL
Monticello, Ga.
Phi Delta



ANDREW
BRYANT

AUSTIN
CLARK

BANKS
CONNER

BASKIN
CORNWALL



COUCH
HOOD

FINNEY
JOLLEY

GREEAR
JONES

HARDEN
KILPATRICK

FRESHMEN

DOROTHY COUCH
Monticello, Ga.
Phi Delta

JOHN MARVIN HOOD
Sautee, Ga.
Y. H. D. S.

DAVID FINNEY
Macon, Ga.
Phi Chi

ELIZABETH JOLLEY
Taylorsville, Ga.
Phi Delta

PHILLIP GREEAR
Helen, Ga.
Y. H. D. S.

MAE NELLE JONES
New Holland, Ga.
Phi Delta

FRANK HARDEN
Columbus, Ga.
Y. H. D. S.

CARTER KILPATRICK
Godfrey, Ga.
Phi Chi

FRESHMEN

CLAUDE MASON
LaFayette, Ga.
Y. H. D. S.

NAT MOZLEY
Douglasville, Ga.
Y. H. D. S.

SARA MAYFIELD
Monroe, Ga.
Susan B

DRUCILLA McAFEE
Macon, Ga.
Phi Delta

LOUISE MICKLE
Camden, S. C.
Phi Delta

WOODROW MCGILL
Bowling Green, Fla.
Phi Chi

ANN MITCHELL
Summerville, Ga.
Phi Delta

MARCUS PHARR
Washington, Ga.
Y. H. D. S.



MASON
MOZLEY

MAYFIELD
McAFEE

MICKLE
McGILL

MITCHELL
PHARR



SHULER

WARD

STONE

WEHUNT

VICKERY

WILSON

WALDROP

FRESHMEN

BAYNE SHULER
Griffin, Ga.
Y. H. D. S.

PATRICIA WALDROOP
Blairsville, Ga.
Phi Delta

THOMAS STONE
Monticello, Ga.
Phi Chi

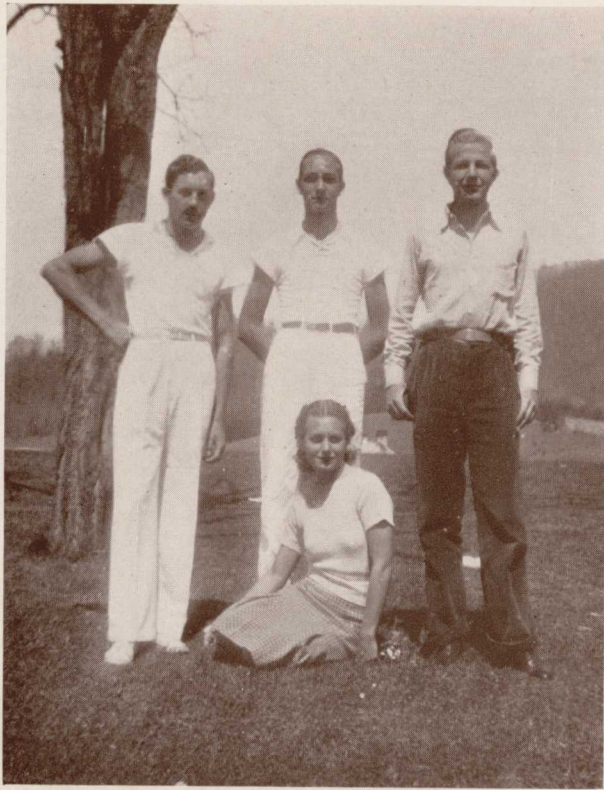
ELIZABETH WARD
Macon, Ga.
Susan B

RAYMOND VICKERY
College Park, Ga.
Phi Chi

RUBY WEHUNT
Higden Store, Ga.
Phi Delta

LUNETIA WILSON
Blue Ridge, Ga.
Phi Delta

ACADEMY SENIORS

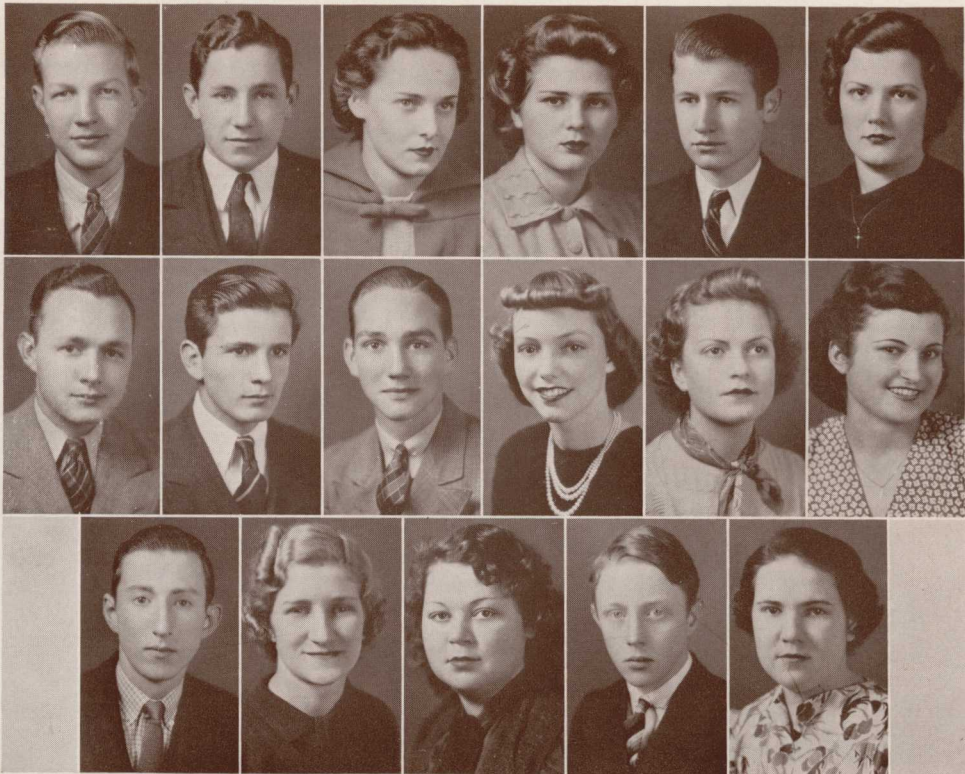


ATKINS
President

HARDY
Vice-President

CHENEY
Secretary

ARMOUR
Treasurer



ARMOUR
DUFFELL

SHANAHAN

ATKINS
GIPPLE

SMITH

BARRETT
HARDY

SOSBEE

COLLISON
IVEY

WARMICK

CRAWFORD
ROE

WHITTON

DAVIS
ROWAN

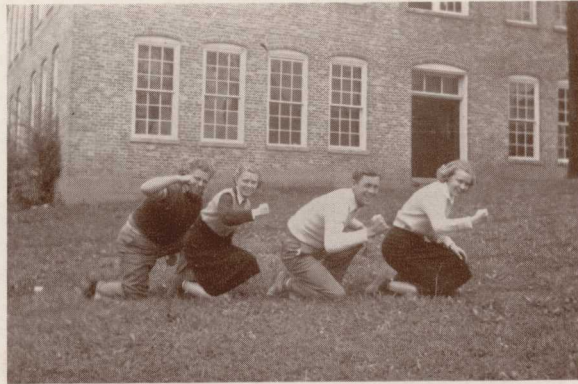
'38



Athletics ~ ~

Young Harris College Library
Young Harris, Ga.

CHEER LEADERS



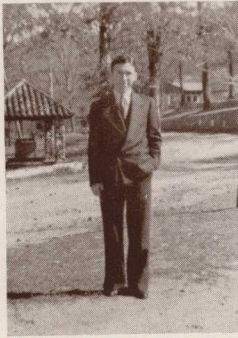
GRIMES

ENGLAND

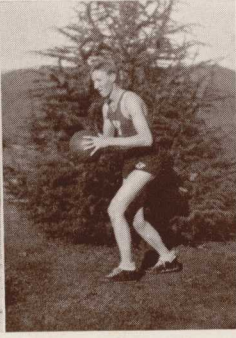
HARDIGREE

PECK

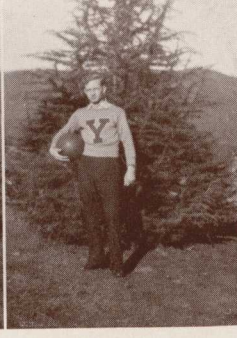




COACH DANCE



CAPTAIN ANDERSON



MANAGER SPEIR

BASKETBALL



FIRST ROW—Patillo, Carson, Wages, Prince.

SECOND ROW—Guillis, Harrell, Anderson, Shuler, Miles.

THIRD ROW—Garrett, Coach Dance.

U. H. 1937



GARRETT—Guard

CARSON—Forward



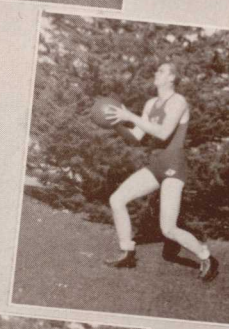
ARCHER—Forward

HARRELL—Forward



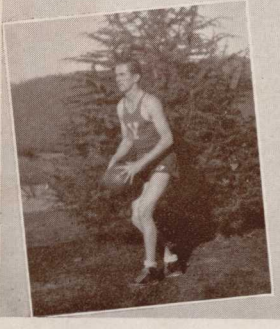
ANDERSON—Center

PRINCE—Center



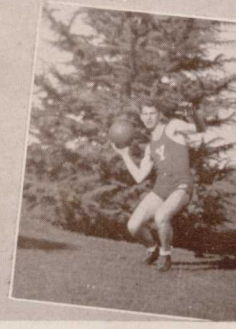
WAGES—Guard

PATILLO—Forward



GUILLIS—Guard

MILES—Guard



B A S K E T B A L L

'37

'38

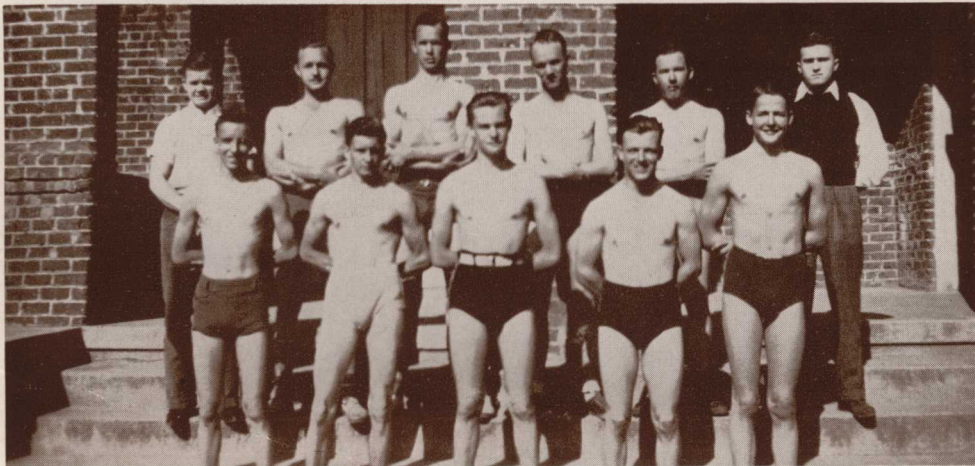
SHULER—Guard (not in picture).

BASEBALL



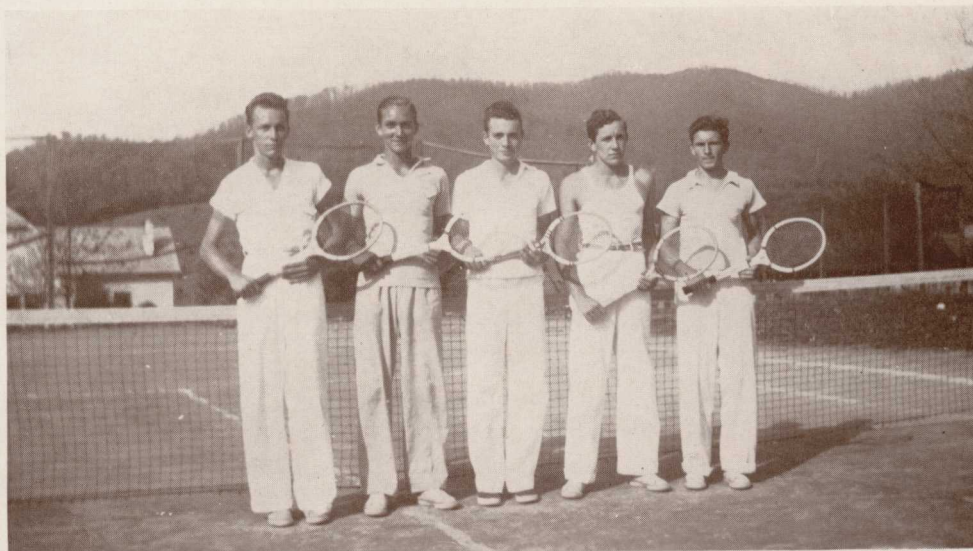
FIRST ROW: Manager Stone, Davis, Carson, Rosser, Mason, Pattillo, Assistant Manager Taylor. SECOND ROW: Greene, Richards, Chadwick, Guillis. THIRD ROW: Instructor Reid, Wiley, Anderson, Townsend, O. Jones, Gregory, G. Jones.

WRESTLING



FIRST ROW: Turner, Gipple, Phillips, Nave, Hester. SECOND ROW: Coach Smith, Duffell, Embry, Jones, Hudson, Manager Busbee.

TENNIS



McAFEE HARDY REID ATKINS GIPPLE

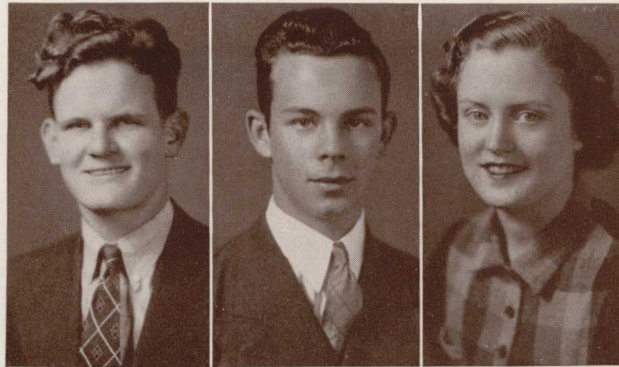
TRACK



FIRST ROW: Hunnicutt, Crawford, Malone, Duffell. SECOND ROW: Jones, Cook, Embry.



Activities ~ ~



FORENSIC CLUB

OFFICERS

CRAWFORD
President

BARRON
Secretary

MORGAN
Vice-President

YOUNG HARRIS CHAMPION DEBATERS

CRAWFORD

MORGAN

ZAMBOUNIS

PHI CHI CHAMPION DEBATERS

COOK

SPEIR

SCOTT

INTERCOLLEGIATE DEBATERS

AUSTIN

LOWERY

H. BARRETT

McRAE

BUFORD

MOZLEY

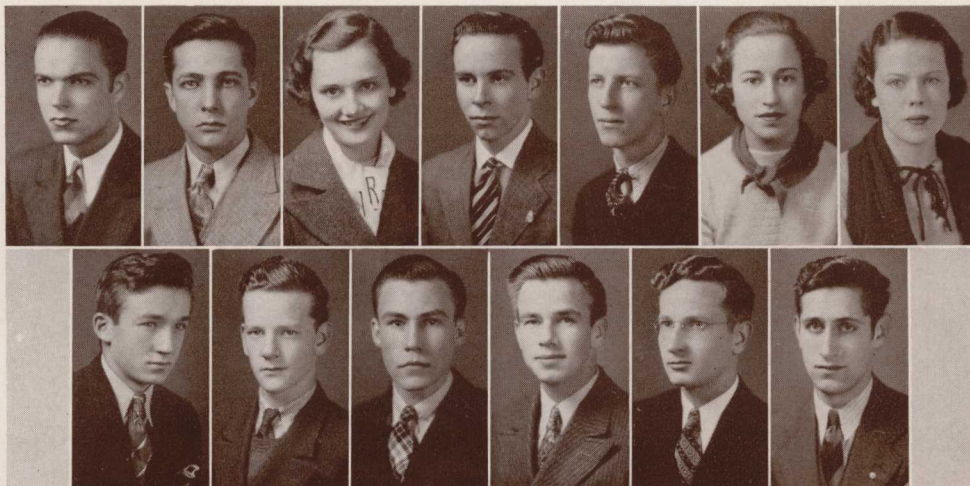
CRANSHAW*

PHARR

HUNTER

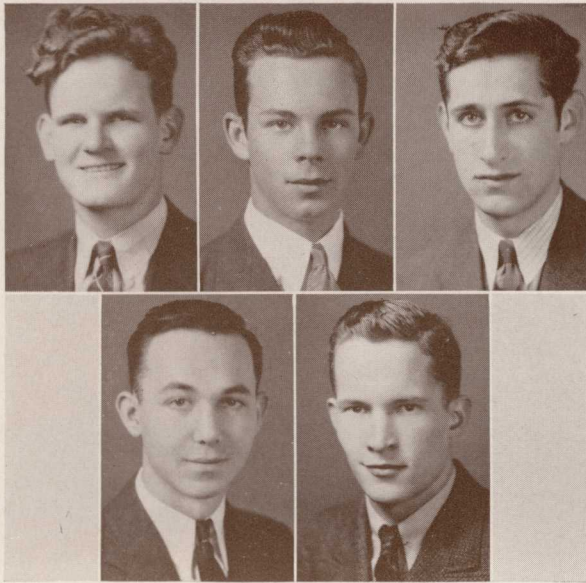
SMITH

WALL*



AUSTIN MOZLEY BARRETT PHARR BUFORD SMITH COOK SCOTT HUNTER SPEIR LOWERY ZAMBOUNIS McRAE

*Not in picture.



CHAMPION DEBATERS

CRAWFORD

MORGAN

ZAMBOUNIS

PRESIDENTS

MORRIS*

STIPE

CRAWFORD

MORRIS

MORGAN

STIPE

ZAMBOUNIS

YOUNG HARRIS DEBATING SOCIETY



*President Fall and Spring Quarters.



SUSAN B. HARRIS SOCIETY



TUMLIN



JO SHARP
Mascot



CLANCY

PRESIDENTS

TUMLIN*

CLANCY

Jo SHARP, *Mascot*

*President Fall and Spring Quarters.



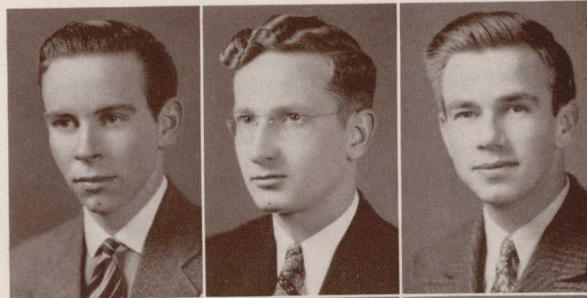
PHI CHI DEBATING SOCIETY

CHAMPION DEBATERS

COOK

SPEIR

SCOTT

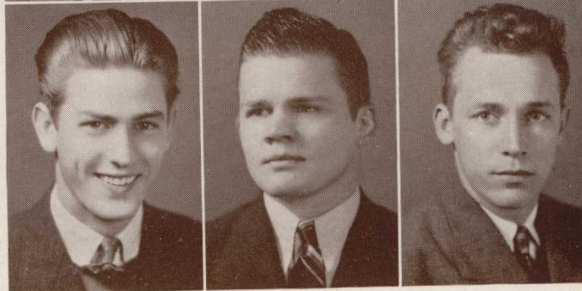


PRESIDENTS

W. ROGERS

P. SMITH

McAFEE



COOK
ROGERS

SPEIR
SMITH

SCOTT
McAFEE

1938 ENOTAH

Young Harris College Library
Young Harris, Ga.

PRESIDENTS

LOWERY*

McRAE

JIMMY CAMP, *Mascot*



LOWERY



JIMMY CAMP
Mascot



McRAE

PHI DELTA SOCIETY



*President Fall and Winter Quarters.



STUDENT VOLUNTEERS

BAPTIST STUDENT UNION

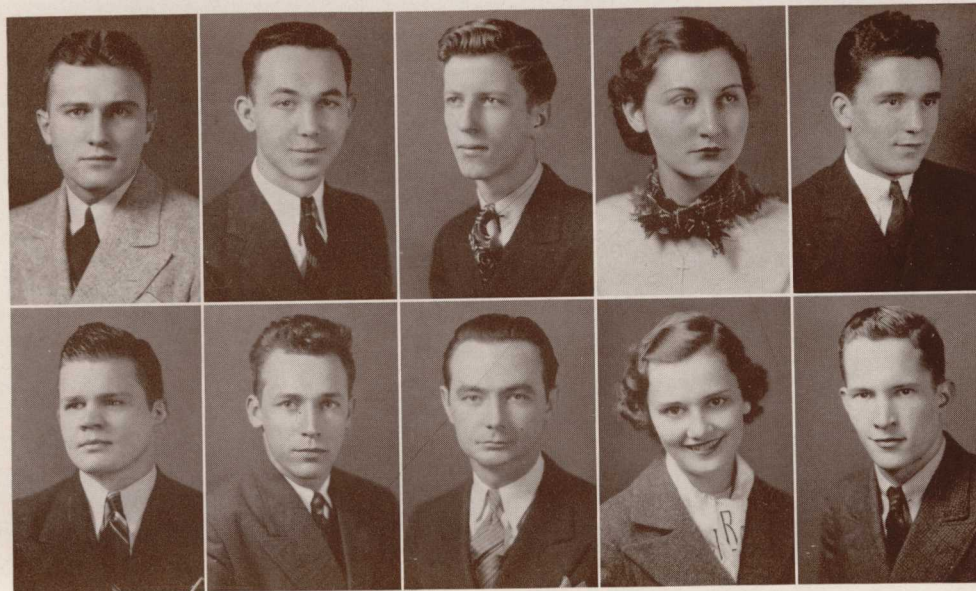




LIFE SERVICE BAND

MINISTERIAL ASSOCIATION





BUSBEE
SMITH

MORRIS
McAFEE

HUNTER
DODDS

SASSER
BUFORD

ATKINS
STIPE

ENOTAH ECHOES STAFF

FRANK BUSBEE	<i>Editor-in-Chief</i>
ALBERT MORRIS	<i>Business Manager</i>
JAMES HAMM*	<i>Assistant Editor</i>
HOMER HUNTER	<i>News Editor</i>
MARIE SANDERS*	<i>Assistant News Editor</i>
MARGERY SASSER	<i>Assistant News Editor</i>
EZRA SELLERS*	<i>Literary Editor</i>
LAWRENCE ATKINS	<i>Feature Editor</i>
PAUL SMITH	<i>Sports Editor</i>
FRANK McAFEE	<i>Exchange Editor</i>
CARL DODDS	<i>Columnist</i>
JOSEPHINE BUFORD	<i>Circulation Manager</i>
EVERETTE STIPE**	<i>Business Manager</i>
J. C. CAMP*	<i>Advisor</i>

*Not in picture.

**Business Manager first part of year.



HOMER MORGAN
Editor-in-Chief

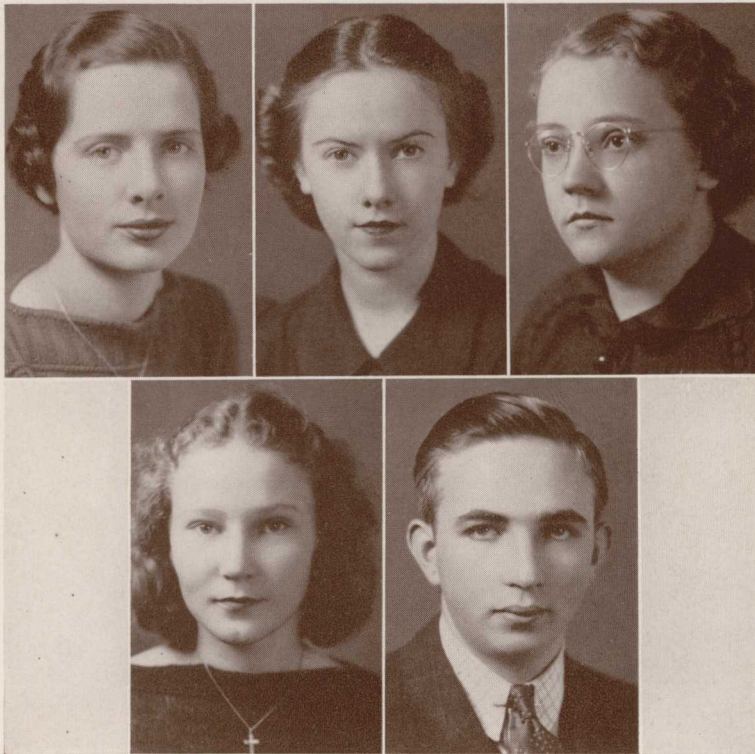


JACK ROGERS, JR.
Business Manager

Appreciation

WE TAKE ADVANTAGE of this space to express our wholehearted appreciation for the support and co-operation of Prof. Camp, our faculty advisor; of the faculty; of the Senior Class; of the student body; and of many friends.

THE STAFF.



SMITH

DEAN

STANTON

THOMAS

BROWNLOW

ENOTAH STAFF

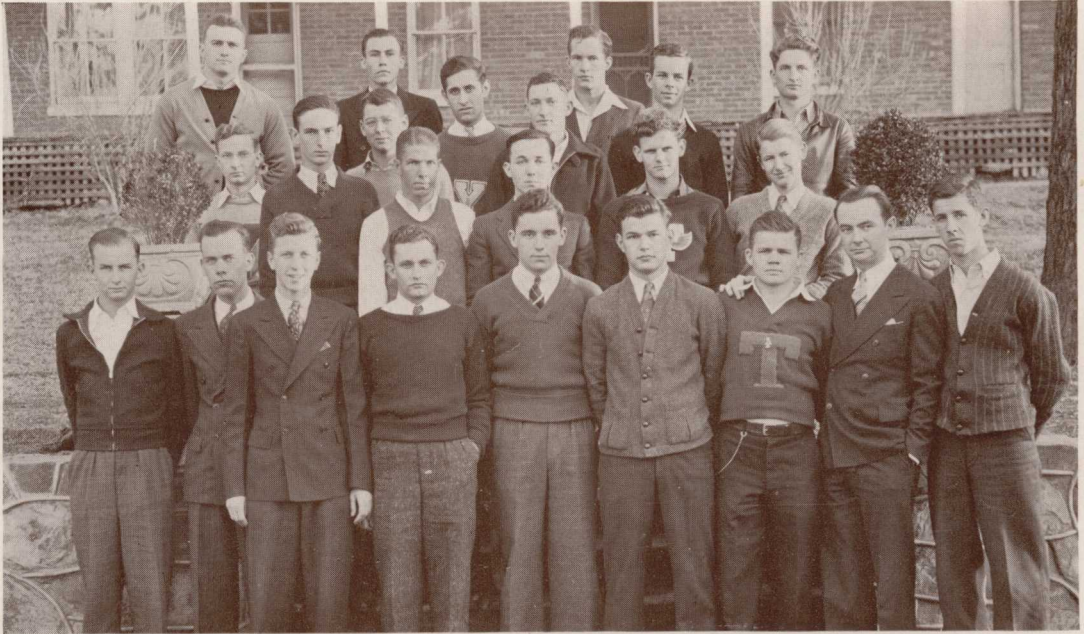
FRANKIE RUTH SMITH *Associate Editor*

SARA STANTON *Associate Editor*

BONNIE BROWNLOW *Associate Editor*

WESLEY THOMAS *Art Editor*

IMOGENE DEAN *Typist*



INTERNATIONAL RELATIONS CLUB

OFFICERS

LAWRENCE ATKINS *President* JAMES EDWIN STRETCH . . . *Vice-President*
 HOMER HUNTER *Secretary*

MEMBERS

FRANCIS STONE
 GEORGE DUNNAGAN
 MAC AMOS
 PAUL SMITH
 CARL DODDS

JOE GREEN
 RALPH SPEIR
 CARTER KILPATRICK
 WOODROW MCGILL
 ALBERT MORRIS

WATSON CRAWFORD
 FRANK BUSBEE
 RAYMOND VICKERY
 CHARLES SMITH
 JAMES ZAMBOUNIS

WALTER HOFFMAN
 EVERETTE STIPE
 HOMER MORGAN
 LEONARD YOUNG
 KENNETH CRAWFORD

MASQUERS' DRAMATIC CLUB





GIRLS' DORMITORY COUNCIL

OFFICERS

MARTHA SHOCKLEY *President* LOUISE TUMLIN *Vice-President*
 MARY CLANCY *Secretary*

MEMBERS

SARAH GARRETT	EDITH PIERCE	EDNA HENDRIX	MARY FRANCES BARNHILL
SAVANNAH MAYFIELD	MARY JANE ROLLINS	DOROTHY HARRISON	JOSEPHINE BUFORD
BEATRICE THRASHER	MELBA REE BARRON	MARY ANNIS SAYER	ELINOR MARSHALL
BLANCHE JONES	MELVA LEE WALKER	FRANKIE RUTH SMITH	MADELINE ENGLAND
	IDA ELDER		

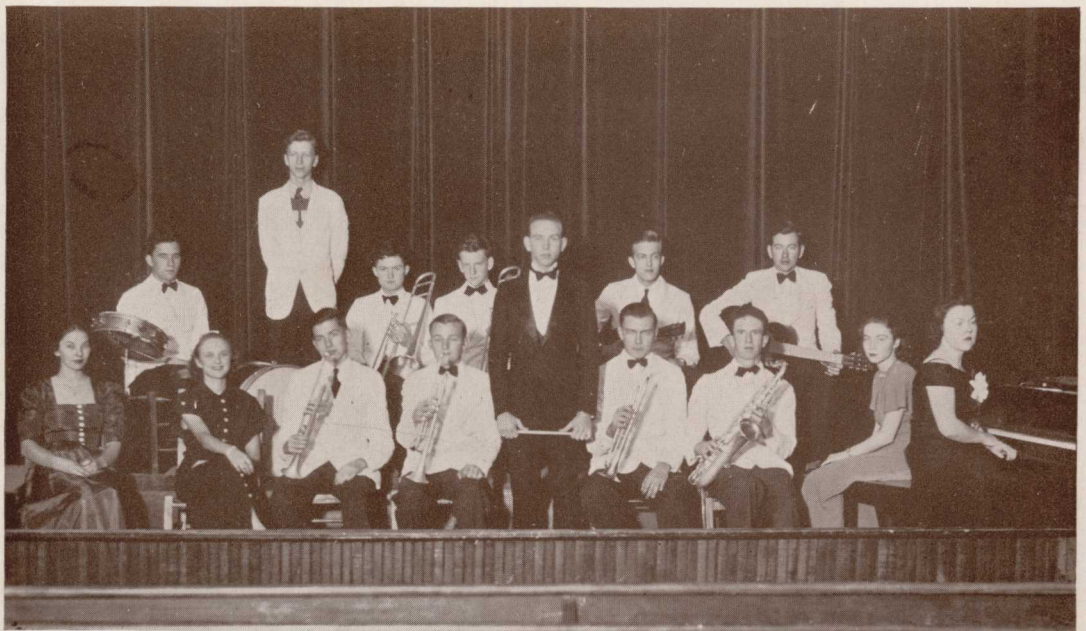
GAMMA ALPHA JOURNALISM CLUB





ART CLUB

ORCHESTRA



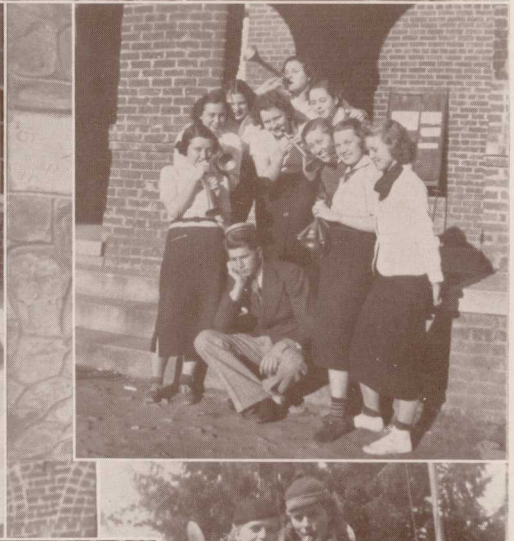
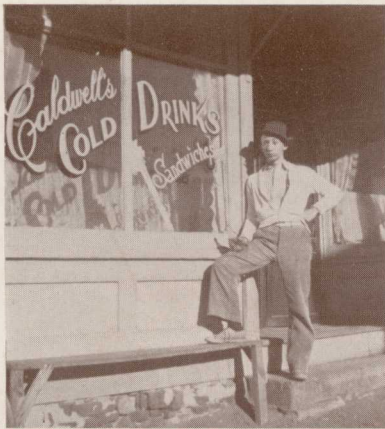


MUSIC CLUB

CHOIR



CAMPUS CANDIDS





Features ~ ~

SUPERLATIVES



SCOTT • MOST POPULAR BOY

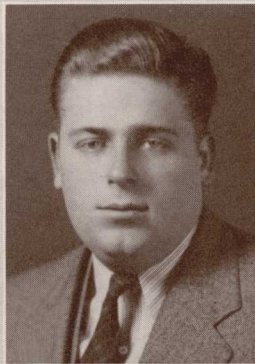


TUMLIN • MOST POPULAR GIRL

MOST POPULAR



STRETCH,
BEST LOOKING BOY



GRIMES,
BIGGEST BULL SHOOTER



LOWERY,
MOST ATTRACTIVE GIRL



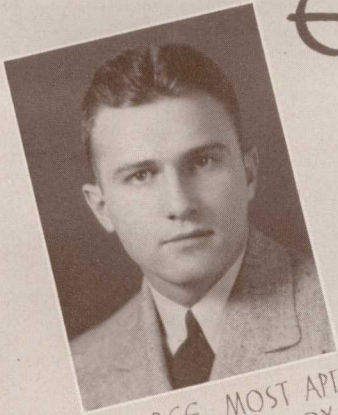
SMITH, BEST 'ALL-ROUND' BOY

'38 SENIORS



WILLIAMS, BEST 'ALL-ROUND' GIRL

ENOTAH



BUSBEE, MOST APT
TO SUCCEED BOY



GARRETT, MOST STUDIOUS GIRL

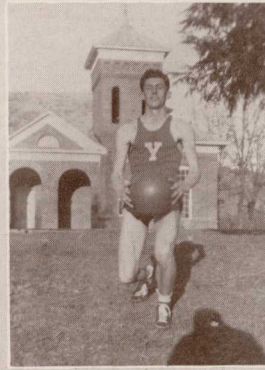


McRAE, MOST APT TO
SUCCEED GIRL

SUPERLATIVES



McNALLEY, MOST ATHLETIC
GIRL



CARSON, MOST ATHLETIC
BOY

'38



BROWNLOW,
BEST SPORT GIRL



HOFFMAN
MOST STUDIOUS BOY



ZAMBOUNIS
BEST SPORT BOY

Young L. G. Harris College

Ending Its 52nd Session June 13, 1938

A Junior College Under the Control of the North Georgia Conference

Twenty-three dollars and fifty cents a month pays all charges except books and incidentals. Children of ministers pay no tuition.

T. J. LANCE, *President*
F. M. HUNTER, *Dean*

L. C. ATKINS, *Registrar*
RALPH MOORE, *Bus. Mgr.*

W. E. MATHESON

"A GOOD STORE"

YOUNG HARRIS / GEORGIA

CROSS PRINTING CO.

We print anything but greenbacks
—we expect our customers
to furnish them.

C
R
CROSS PRINTING CO.
S
S
CLAYTON,
GEORGIA

STRINGER BROS. CO.

Fine ~

CONFECTIONS

GAINESVILLE / GEORGIA

PALMOUR HDWE. CO.

HARDWARE

SPORTING GOODS

GAINESVILLE / GEORGIA



Pure refreshment

HOTEL & RESTAURANT
SUPPLY CO.

382 Peachtree St.

ATLANTA

GEORGIA

GAINESVILLE STEAM
LAUNDRY

GAINESVILLE

GEORGIA

SMALL & ESTES

BAKERY

GAINESVILLE

GEORGIA

IMPERIAL PHARMACY

GAINESVILLE

GEORGIA

THE CITIZENS BANK

GAINESVILLE, GEORGIA

JESS and BONNIE

A Good Place
to Eat

YOUNG HARRIS ✓ GEORGIA

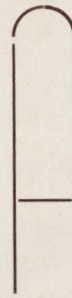
MAYNARD BROS.

ELECTRICAL
SUPPLIES

GAINESVILLE ✓ GEORGIA

*The Enotah staff wishes to express their appreciation to the above
advertisers, and urge the students to patronize them.*

The Staff



ALL PORTRAITS

IN THIS BOOK MADE BY

GASPAR-WARE

Studios

30-32 FIFTH STREET, N. W.

**ATLANTA
GEORGIA**



OFFICIAL PHOTOGRAPHERS FOR

The Enotah

All ENOTAH negatives are held in our files for several years and personal photographs can be obtained at any time.

Write for information and special price list.

Photography

by **GASPAR-WARE** 

In Printing

THERE ARE MANY REASONS WHY
SUCCESSFUL ANNUALS REQUIRE
THE SERVICES OF EXPERIENCED
AND EXPERT CRAFTSMEN

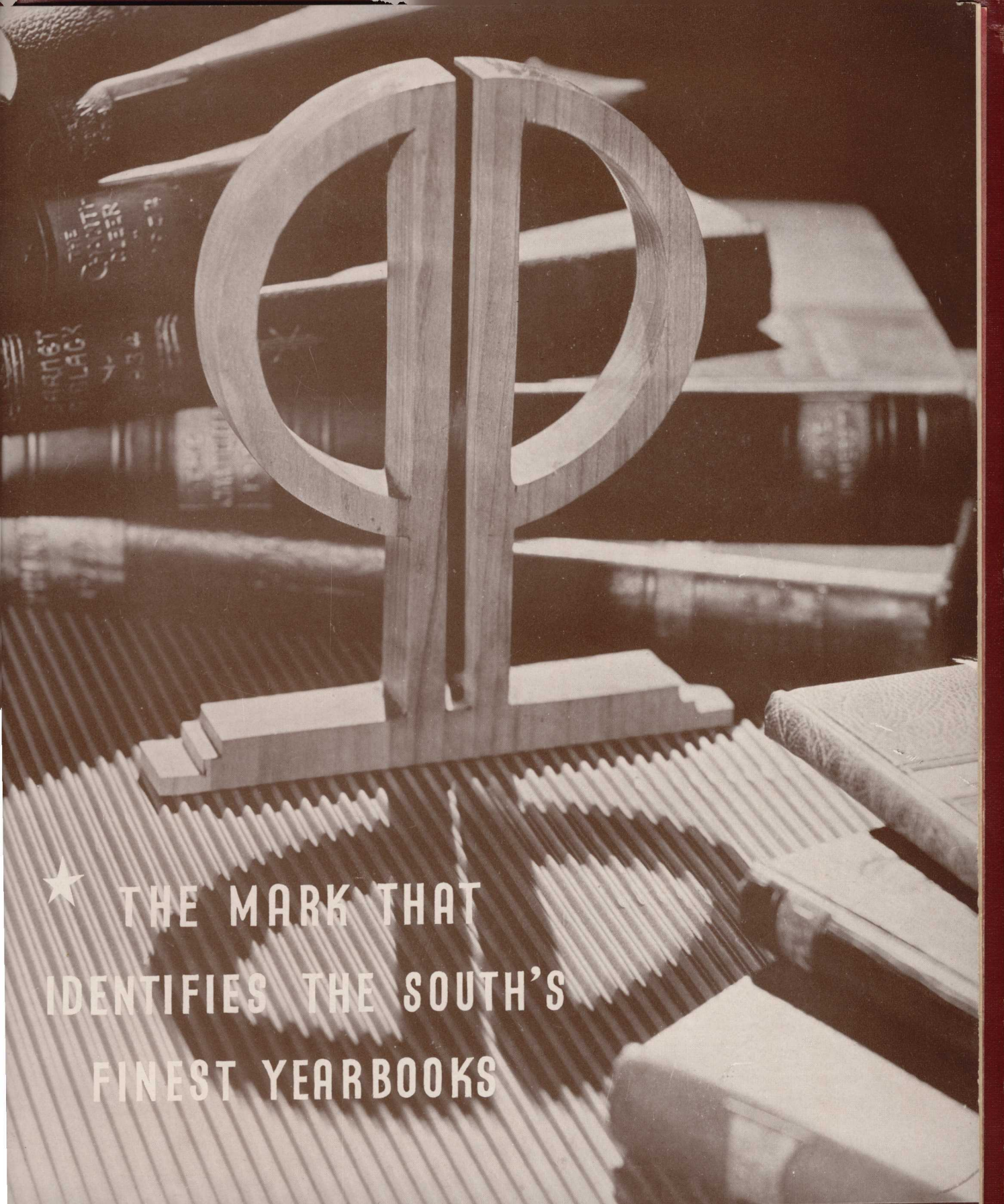
FOOTE & DAVIES CO.

HAVE THESE SERVICES . . . and
*the most necessary components of
all really fine books including*
A SPECIAL ANNUAL SALES
AND SERVICE ORGANIZATION
CREATIVE DESIGNERS AND
LAYOUT ARTISTS • ABUNDANT
EQUIPMENT . . . MODERN AND
COMPLETE • PRICES REPRESENTING
MAXIMUM IN VALUE



ATLANTA
GEORGIA

II



★ THE MARK THAT
IDENTIFIES THE SOUTH'S
FINEST YEARBOOKS

PHOTO-PROCESS ENGRAVING CO.

115 - 119 LUCKIE STREET ★ ATLANTA GEORGIA

