

DUCKWORTH LIB., YOUNG HARRIS COLLEGE



5 0839 00108249 4

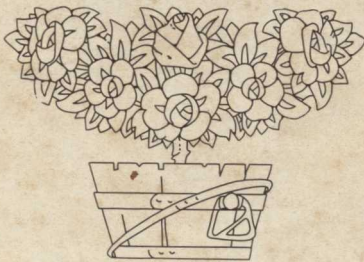


1918
ARBUTUS

ARBUTUS

1918

Lon - page 37
" 60



Given to me by "Dorrie"
& Vernie Lawrence of
Norfolk, Va -

Both were at Young Harris
with Lon -

Published by the Student Body 10-21-1968
of _____

Young Harris College

Young Harris, :: Georgia


I took them & Marie Lawrence to dinner
at the Athletic Club -



PLANTING THE CLASS TREE OF '18

A Retrospective Glance

By FRED H. RAY, '19

O PURER Anglo-Saxon blood flows through the veins of man than is found among the rugged old blue peaks of North Georgia, and once fired with the torch of enthusiasm for the higher and nobler ideals of life, youth of the mountains springs forward into a life of untold value to his state, his country, and his God.

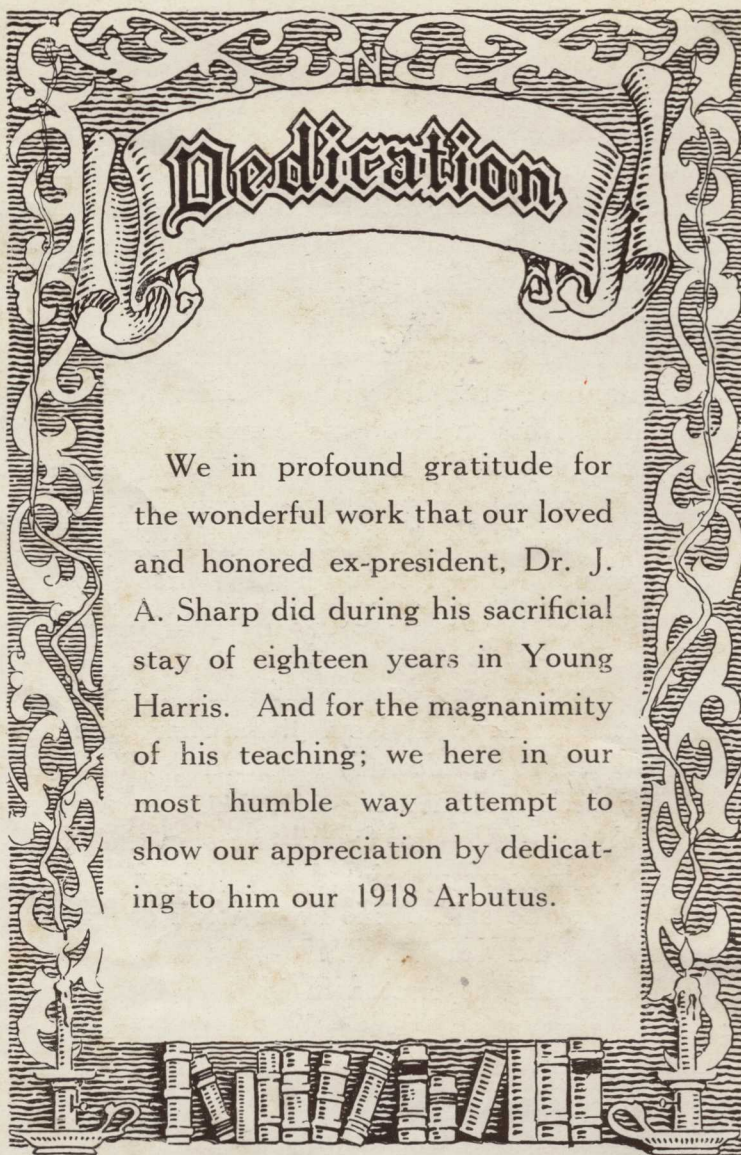
Realizing the need of the awakening touch of education among this class of people, the North Georgia Methodist Conference opened a school at the little Mission in Towns County, Ga., in 1887. The work began, by the help of the Master, under the guidance of Rev. Artemus Lester, the missionary to this mountain station.

The first day of the School's life saw four pupils present themselves for admission. From four pupils the first day the school has grown to an accredited Junior College, often with an enrollment of over 400.

After several men of God had contributed their efforts to the management of the Institution, Rev. J. A. Sharp took charge in 1899, and for 18 years so wonderfully moulded the life of the school that the whole church mourned his loss, when on account of the failure of his wife's health, he was forced to resign the presidency.

Rev. Geo. L. King was appointed to fill the vacancy in 1916, and too much cannot be said of his great work during the period of his labours for the old College.

Rev. John L. Hall was elected in 1917 to fill the presidency after Rev. King's resignation. With the master-hand of a veteran business man Mr. Hall waded into the big job with gratifying results, and today old Young Harris College is in the moulds for the greatest of her class in the field of education in Georgia.



Dedication

We in profound gratitude for the wonderful work that our loved and honored ex-president, Dr. J. A. Sharp did during his sacrificial stay of eighteen years in Young Harris. And for the magnanimity of his teaching; we here in our most humble way attempt to show our appreciation by dedicating to him our 1918 Arbutus.



DR. JOSEPH ASTOR SHARP.



TRUSTEES

COL. W. L. PEEL, <i>President and Treasurer</i>	Atlanta
REV. HENRY F. BRANHAM, <i>Secretary</i>	Atlanta
HON. H. J. FULLBRIGHT	Waynesboro
COL. W. F. PATTILA	Atlanta
REV. T. C. HUGHES	Blairsville
HON. JNO. N. HOLDER	Jefferson
REV. W. F. HAMBY	Carrolton
HON. SAM TATE	Tate
REV. FRANK QUILLIAM	Barnesville
DR. J. A. SHARP	Atlanta
DR. FLETCHER WALTON	Atlanta
DR. J. D. MIDDLEBROOKS	Powder Springs
DR. S. R. BELK	Athens
HON. J. N. McEACHERN	Atlanta
REV. J. P. ERWIN	Marietta
CHAS. D. BARRETT	Union City

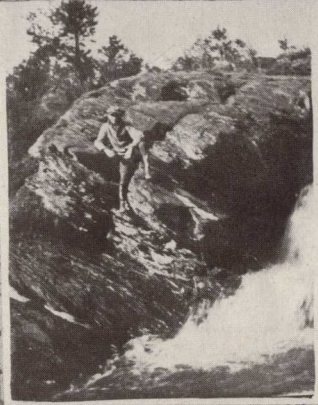
NOTE—Photos of Trustees could not be published because of our inability to get them in time for publication.



Young Mattis from "Sharp's Kill."



Cupid



The Bell

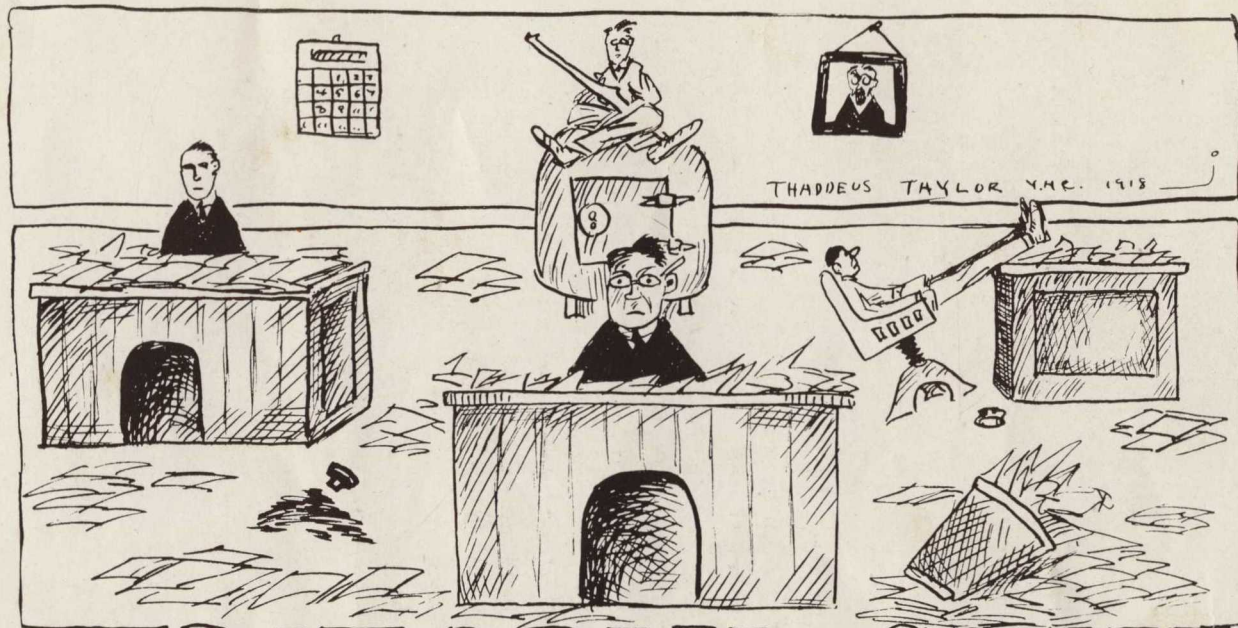


The "Hup"

SNAPSHOTS AT RANDOM

Foreword

WE profoundly feel our inability to prepare an annual that is worthy of our cherished institution, but by hard labour, persistent effort and the hearty cooperation and support of our esteemed faculty and friends, we are able to offer, though with imperfection, the second annual from Young Harris College. If our readers find in this publication worthy information and pleasure, we shall feel fully compensated for our efforts spent in the preparation of the *Arbutus*.



EDITORIAL STAFF.

Arbutus Editorial Staff '18

WALTER Q. HIGDON..... *Editor-in-Chief*
BESSIE SMITH..... *Assistant Editor*
FRED H. RAY..... *Business Manager*
KELLEY C. COFER..... *Assistant Business Manager*
E. BENNET HORTON..... *Literary Editor*
ADGER M. WHITEFIELD..... *Treasurer*
W. M. VEAL..... *Athletic Editor*
HIRAM EVANS..... *Joke Editor*
DON CALDWELL..... *Art Editor*

Emma X.

Staff Officers



LITERARY ED.



ASST. ED-IN-CHIEF



JOKE ED.



BUS. MGR.



ED-IN-CHIEF



TREAS.



ATHLETIC ED.



ART EDITOR



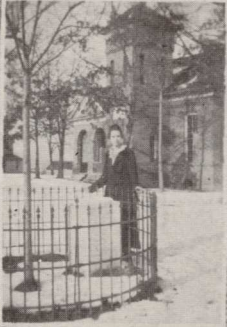
ASST. BUS. MGR.



SUSAN on Duty.



MELTON JUNIOR MAMA.



SQUIRE, or "VICE."

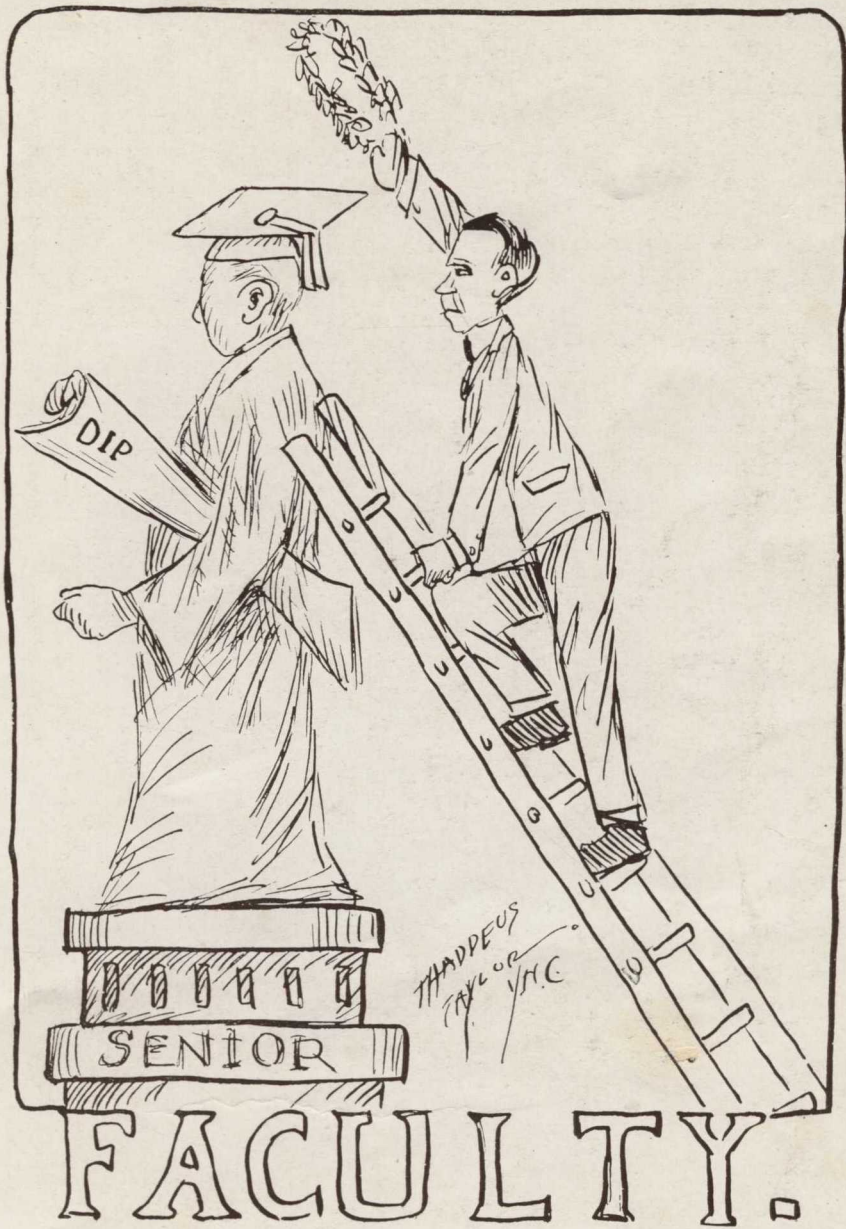


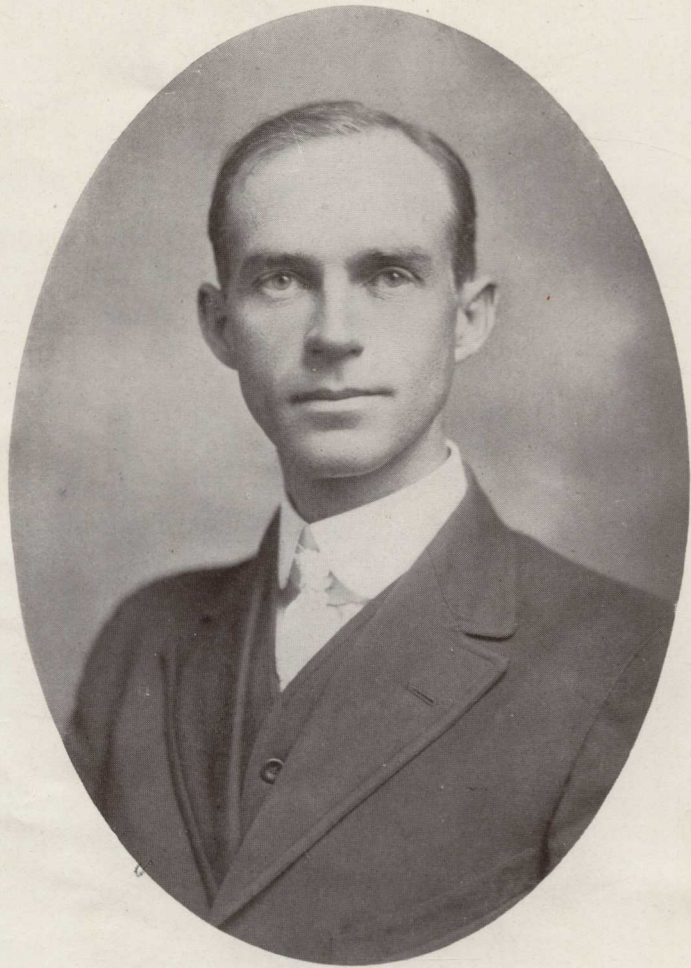
LITTLE "SAMP" JUNIOR.



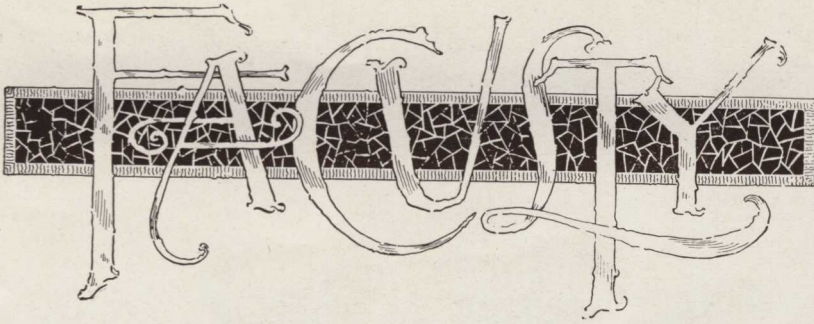
GILLETTE
ATLANTA

A FEW SNAP SHOTS ABOUT THE OLD PLACE





REV. JOHN L. HALL, PRESIDENT



PRESIDENT JOHN L. HALL, A. B.

Metaphysics

S. E. HAMRICK, A. B.

Mathematics

S. B. TOLAR, A. B.

English

H. C. JOHNSON, A. B.

Science

E. M. STANTON, A. B.

History

J. H. PITTARD, B. S.

Academy

MARTHA HOPE

Assistant Academy

EDITH HOPKINS

Latin and Greek

MARIE OWENBY

French

SARAH SATTERWHITE

Expression

MRS. IDA C. TAYLOR

Art

BONNIE MAYE ALEXANDER

Music

RUBY BARTON

Commercial

MRS. JOHN L. HALL

Wife of President

A Resonance

J. L. BAILEY

With no chilling winds nor gloomy skies
Here in this wonderful portal,
It's a land where beauty never dies
And love here becomes immortal.

No light is ever dimmed with shade
Where mountains will be eternal,
Beauty and grandure never fade
And Vallies are ever vernal.

The air is sweet and pure here
And now bright and its flowers,
We hear the songs that are echoed near
Thru all the enchanted bowers.

Sometimes, when adorn the western sky
The firey sunset lingers,
Its golden gates swing to and fro
Pushed by unseen fingers.

And while they pause a moment half ajar
Shines forth the untold glory,
And gleans thru the azure vaults afar
But always tells some story.

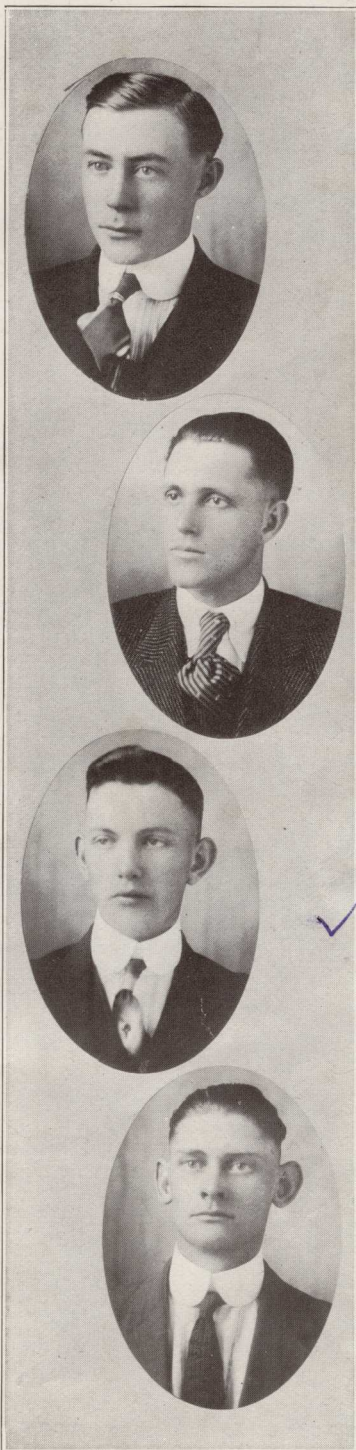
Of Young Harris, a place that is devine
And of the valley that is vernal,
Our memories of it will not decline
We believe it will stand eternal.

MARVIN AUGUSTUS ALLISON, A. B.

Cleveland, Ga.

Entered school '14; member Y. H. D. S.; four times public debater; Champion Debater; Inter-collegiate debater; speaker Soph. contest '15 and '16; Class tennis player; baseball player; Rhadamanthus of Hickey Club; also one of its founders.

*"Humor indeed, he must have possessed,
'Cause his words were smilingly caressed."*



JOHN LEONARD BAILEY, B. S.

Norcross, Ga.

Entered '15; member Y. H. D. S.; member Athletic Association; in three college plays; one of the founders and Potentate of the Hickey Club; Pres. Society '18.

"A poet in soul, he pinned the stars on paper."

ALLEN JEFFERSON BELL, B. S.

Brasstown, N. C.

Entered '14; member Phi Chi Society; pres. Society; three times public debater; pres. of Class '17; Jr. speaker; Champion Debater; Intercollegiate debater.

"He walked in the footsteps of William E. Gladstone."

CHARLES WILSON BOWMAN, A. B.

Villanow, Ga.

Pitched tent '14; member Y. H. D. S.; Public debater; pres. of society '17; member of basketball and baseball teams; Manager baseball; Captain basketball; member of Hickey Club.

"His thoughts were strong, sound and beautiful"



MAUDE CROW, A. B.

Chatsworth, Ga.

Entered school '15; member Philo Society; Member Temperance Society; in Philo plays of '15 and '17; won Soph medal '16; Public Temperance speaker Spring '17; Commencement Temperance speaker '17; Pres. Philo Society Fall '17; Vice-pres. Sr. Class.

"In perseverance she excelled, in nothing was she short."

REUBEN HILL DAVIS, JR., A. B.

Bolingbroke, Ga.

Entered school '16; member of Y. H. D. S.; Public debater; member of Athletic Association; member of Glee Club.

"Cicero and Virgil breathed his soul."

FRANCES DODD, B. S.

Kingston, Ga.

Entered school Fall of '15; member of Susan B. Harris Society; President of Susan B. Harris Society in Fall of '17.

"Her life was beautiful to see, she lived it pure and clean."

HUBERT DODD, B. S.

Kingston, Ga.

Entered Soph. Class '15; member of Y. H. D. S.; Member of Temperance Society.

*"His life was bereft of sentimentality,
He threw kisses at the stars."*

PAUL TURNER GARY, A. B.

Norcoss, Pa.

First heard of '16 taking A. B. course; active member of Phi Chi Society.

"He loved the ladies and reveled in their presence."



HARVEY COLUMBUS HOLLAND, B. S.

Commerce, Ga.

Entered the second Academic '14; Member of Y. H. D. S.; five times public debater; member of Temperance Society; twice public Temperance speaker; member of the Ministerial Association; Pres. of the Ministerial Association; Ministerial public speaker; pres. of Epworth League.

"He was sincere and earnest."



WILLA MAE JOHNSTON, B. S.

Brasstown, N. C.

Entered school '15; member of Philo Society; pres. of Philo Society '17; in two public plays; Jr. commencement speaker on Soph. contest of '16; Prophetess of Class.

"The Sun ne'er shined on a face so eloquent with beauty."



EWELL HOPE, B. S.

Oakwood, Ga.

Entered school in Spring of '18; member of Phi Chi Society; member of Glee Club.

"Stern in mind and heart."





THOMAS BRYAN JOLLY, B. S.

Kingston, Ga.

Entered school in '15; member of Phi Chi Society; pres. of Phi Chi Society; member of Athletic Association; member of Hickey Club.

"His heart was in his laughter."



THOMAS JEFFERSON LONG, JR., B. S.

Atlanta, Ga.

Entered '15; member of Phi Chi Society; three public programs; Inter-collegiate debater; Champion Debater; Declaimer Washington Birthday '16, and orator '17; presented Loving Cup to Dr. and Mrs. Sharp '16; presented watch and carving set to Prof. and Mrs. King '17; won medal Soph. contest '16; pres. Phi Chi Society '17; Business Manager Laural in '17 and '18; in six public plays; Imperial Ruler of Hickey Club.

*"His thoughts were Kingly
He scaled the ladder of Oratory.
In fact he was a man."*



BELL ROARK, B. S.

Gainesville, Ga.

Entered first Academic '12; member of Susan B. Harris Society; represented the Society in two public plays; Fall terms '12 and '17.

"She is the cord of human sentiment."



JAMES E. PINKERTON, B. S.

Eatonton, Ga.

Entered '16; member of Phi Chi Society; Public Debater; member of Temperance; member of Athletic Association; member of Glee Club.

"His speech excelled the ancient sages."

FRED H. MAXWELL, A. B.

Gainesville, Ga.

Entered first Academic '13; member of Y. H. A. A.; Manager Tennis '17 and '18; baseball and basketball and tennis payer; manager and captain of tennis and basketball; Inter-collegiate basketball player; member of Temperance Society; pres. of Temperance; member of Y. H. D. S.; on six public programs; Inter-collegiate debater '17 and '18; Champion Debater in '18; member of Glee Club; member of Hickey Club; won medal in Academic year; pres. of Class '18.

"A man that was clean in mind and body."

CHARLES ROY McKIBBEN, B. S.

Locust Grove, Ga.

Dropped anchor '15; member of Y. H. D. S.; public debater; Anniversarian for the Y. H. D. S. '17; member of the Ministerial Association; on three Ministerial public programs; member of Temperance Society; Public Temperance speaker; pres. of Temperance Society and Ministerial Association; member of Epworth League, Jr., speaker.

"Go ye into all the world and preach the Gospel."

ILA MAYE SEGARS, A. B.

Commerce, Ga.

Entered Freshman Class in '14; member of Susan B. Harris Society; pres. of Susan B. Harris Society '17; Class Musician.

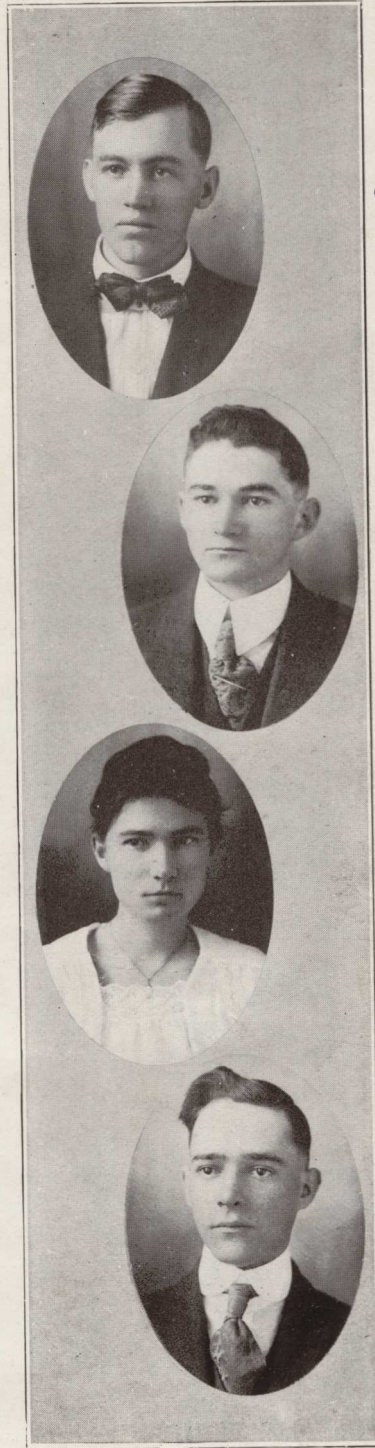
"She could enchant the sweetest harmony, and capture the deepest melody."

FRANK F. ROSSER, B. S.

Eatonton, Ga

Entered school in '16; member of Phi Chi Society; pres. of Society; member of Temperance; member of Athletic Association; member of Senior baseball and basketball teams; member of Hickey Club.

"A man to the core."





JOHN WILLIAM SEAY, A. B.

Duluth, Ga.

Entered '15; member of Y. H. D. S.; member of Temperance Society; Jr. commencement speaker '17; member of Hickey Club.

"For weeks he lived in ecstasy, dreaming of years to come."



MALCOLM SMITH, B. S.

Brooklet, Ga.

Entered Junior class '16; member of Susan B. Harris Society; pres. Society Spring '18; represented the Society on two public programs; executrix of Wills Class Tree Exercises.

*"Her locks were laved in the glow of the sunset,
She was simple and sweet."*



HORACE TANNER, B. S.

Texarkana, Texas.

Entered '14; member of Y. H. D. S.; on four public debates; Champion Debater; member of Y. H. A. A.; member of baseball and basketball teams; member of Glee Club; member of Hickey Club.

"His mind could unveil the hidden truths of the past and the future."



ROBERT ROWE TEAGLE, A. B.

Pitts, Ga.

Entered '15; member of Y. H. D. S.; College Librarian Scholastic year '17 and '18.

"He touched the flower and it smiled, his life was an endless flow of merriment."

JAMES DANIEL THOMAS, B. S

Arnoldsville, Ga.

Entered '16; member Y. H. D. S.; member of Athletic Association; member of baseball team.

"A ladies man was he."



GLADYS TINGLE, A. B.

Jackson, Ga.

Entered Spring of '17; member of Philo Society; pres. of Society in Fall '17.

"I see beyond the stars, obstruct not my vision."



JESSIE WARWICK, A. B.

Athens, Ga.


Entered Y. H. C. '14; member of Y. H. D. S.; on three public debates; pres. of Society Spring of '18; member of Temperance Society; twice Temperance speaker; pres. Temperance Society; member of the Ministerial Association; twice Ministerial speaker; member of Hickey Club.

"A Broom was his wish that he might cleanse his heart."



Senior Class History

By MAUDE CROW, '18

OUR years ago we came to this quiet and peaceful hamlet, though the time then was far away but hidden in the depths of our hearts, we dreamed that we might someday be Seniors. Now through much toil and many efforts, which at times seemed in vain, we have struggled faithfully till we are at last Seniors.

Our class is composed of boys and girls whose records have been of the best, whose ambitions are high and noble. They are preparing themselves for every walk of life, and in their school days their talents have already begun to unfold. Next year they will be ready to begin their work in the fields of Theology, Law, Agriculture, Medicine, Music, Literature and Art.

On the Athletic field our boys have not been surpassed. Since they were Freshmen they have held the topmost place on the baseball diamond, basketball and tennis courts.

Our quantity is not the greatest, but the quality cannot be excelled. In all our undertakings and achievements, we have been loyal to each other and the institution. As the time draws near for our departure, we feel a tinge of sadness at the thoughts of leaving our friends, classmates and our Alma Mater. But the helpful lessons, pleasant experiences, and joyous days that have been ours will forever be dear to each of us. For the untiring efforts put fourth and the kindness shown by the Faculty, we are grateful.

We are sure that if we keep our class motto, "LABOUR OMNIA VINCIT" ever before us as through life we go, success will be ours.



JUNIOR.

“Not At the Top But Climbing”

E. B. HORTON, '19



WHEN we heard the bells a-chiming,
Some two years ago, or more,
We had just begun our climbing,
From our place, the bottom row.

“Nobby Freshies” were we then,
Climbing from the bottom round,
And like kids that would be men,
Many a time we’ve fallen down.

But with zeal; the bull dog kind,
We got our foot on firmer ground,
We’ve been climbing all the time,
And now behold the topmost round.



Junior Class Officers

W. Q. HIGDON, *Pres.* PEARL WALLIN, *Vice Pres.* RUTH BROOM, *Treas.*
 ADGER M. WHITEFIELD, *Sec'y.*

MEMBERS

Motto: *Not at the top but climbing.*

Colors: *Black and red.*

Flower: *Red carnation.*

ALEXANDER, FANNIE	GILLISPIE, STELLA	ROGERS, FANNIE LEA
BASKIN, MILTON	HAMBRICK, HUBERT	SEGARS, CORINE
<i>Emma J.</i> CALDWELL, DON	HOPKINS, ETHEL	SELF, ILA
COFER, K. C.	HORTON, E. B.	SMITH, BESSIE
COLEMAN, R. L.	JONES, MYRTIE	SMITH, D. F.
CRAWFORD, JOE	MATHIS, MABEL	SMITH, MILDRED
DODD, RUBY	McAFEE, ALICE	TURNER, CHAS. A.
EVANS, HIRAM	RAY, MAY	VEAL, W. M.
RAY, F. H.		WALKER, I. C.

Don is a nickname, Emma J. is the legal one




JUNIOR CLASS



JUNIOR CLASS (Continued)

Junior Class History

E. BENNETT HORTON, '19

FROM the annals of history we have found that all things must have a beginning. There is no spring that has not its source. The history of our class began in the year nineteen hundred and fifteen, and now for almost three scholastic years we have faithfully toiled in an effort to equip ourselves with the proper mental and spiritual training, for our becoming useful men and women in the great battle between efficiency and deficiency.

We have the record of having been the largest Freshman class that ever frequented the class halls of dear old Y. H. C. It is also very true that we have had the greatest number of wonderful intellects probably of any class in school. It is safe to predict that we have had some wits, both feminine and masculine that shall in the years to come be active factors in the unveiling of the yet veiled mysteries of science, or revolutionizing of the political history of the world.

Woman is the most wonderful by far of the creations of Omnipotence, and she is now carrying out on every hand for the rights that she thinks man has unjustly kept from her. The Junior Class of '18 has some feminine wits who are surely to be regarded as coming leaders in the championing of woman's rights.

In our athletic department we are not near so brilliant as we are in our lines. It is however more especially due to our having directed our attention to something else rather than to our lack of material; because we have some fine material were its energies to be directed in that direction. But our motto has been mental efficiency first, and then physical culture.

SOPH



If We Try and Try

By OTIS GILLIAM, '20



TIME is passing swiftly,
The days of spring flit by
But we can gather her treasures
If we will only try and try.

As we toil up and onward
Although the moments fly
Each day we gather knowledge
If we will only try and try.

We can make our lives useful
As the days go swiftly by
And crown each one with jewels
If we will only try and try.

Fate cannot build a barrier
So rugged or so high
That we cannot surmount it
If we will try and try.

So true of Lov
2-22-69



Sophomore Class Officers

V. C. LAWRENCE, *Pres.* IRENE KING, *Vice Pres.* R. E. CLEGG, *Treas.*
 DOYLE KING, *Sec'y.*

MEMBERS

Motto: *Courage sans peur.*

Colors: *Green and white.*

Flower: *White carnation.*

AKIN, LEILA
 ALLEN, KATE
 BEASON, D. D.
 BERRY, CARTER
 BERRY, W. C.
 BROWN, SHELDON ✓
 BURT, ALMA
 CARLTON, J. H.
 CORN, DENNIS E.

DUCKWORTH, J. L.
 ECHOLS, ROY
 GARY, LEE
 GILLIAM, OTIS ✓
 GLENN, CLARA
 GOWER, DEWEY
 HALL, ERLINE
 JOHNSON, WILLIE

LANCE, KATE
 LONG, CRAWFORD
 McMULLEN, A. M.
 PRICKETT, CHAS.
 ROSSEE, J. L. ✓
 STARLING, MATILDA
 STEPHENS, W. H.
 STRICKLAND, KATHLEEN
 WILBANKS, PEARLE



SOPHOMORE CLASS

LON



37

SOPHOMORE CLASS (Continued)

Sophomore Class History, '18

OTIS GILLIAM, '20

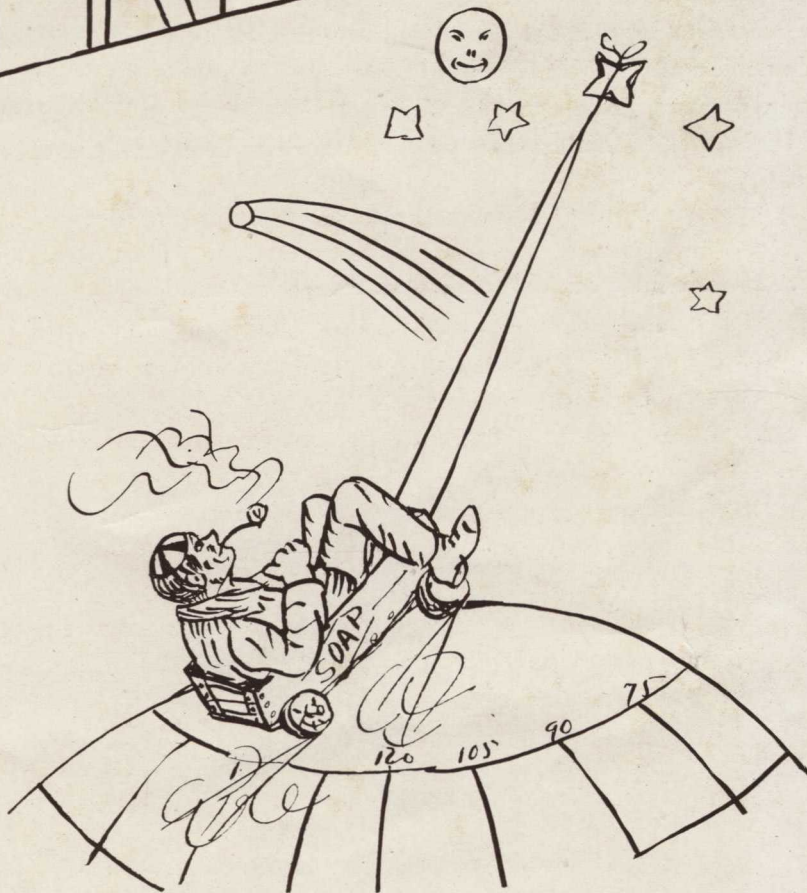
WE ARE the Sophomore Class of Young Harris College, thirty-three in number. Our class last year was much larger than it is now, for many of our boys have been called away to help Uncle Sam win the war, and many others did not come back for various reasons. Yet we had several new members added to our class at the beginning of the term. We hope to receive many more next year, so that when we are Seniors we will be able to turn out a large class.

The Sophomore boys are great lovers of athletics. They are excelled only by the Seniors in basketball, and are among the first in baseball and tennis. While our girls are very much interested in music, art, and expression. We have all been successful in passing from the Freshman class, and have been found worthy to hold a place as a Sophomore of Y. H. C.

Although we may have many faults, we have always tried to have good lessons, and we are very grateful to our beloved teachers, who have never tired in aiding us, not only in our lessons, but in any way, and at any time when their help was needed.

We are a well organized class, working for the interest of classmates, as well as for ourselves. We are working hard so that next year we may be prepared to take the place the Juniors have now.

FRESH



A Freshman's Letter to His Ma

Young Harris, Ga.,
sep 10 1917.

dear Ma.

how Are u gitin along. After havin A grate deal ov trouble i Got to yung harris al rite. i shore Am Hungry? sind Me sumpthin To ete n yore 1st letter The rodes aint no good up Here. I didnt no wher To go when i Got here so i made a mistak an staid n The girles domatorie The 1st nite. the facultie liked to Expel me. I staid en a Graveyard The nex nite. wil tel yu Moure about it later.

i joined the freshmen class as they no mour then the Others. Am lernin faste.

yore sun

christufur.

p. S. Has ole pink kum in yet an does Bringer stil suck eggs?






FRESHMAN CLASS



FRESHMAN CLASS (Continued)

Freshman Class History

By C. D. MARTIN, JR., '21

HE Freshman class of 1917-'18, having nearly completed a very successful year, due to the brilliancy and studiousness of our members, having been asked for our class history, have decided to put before the world our wonderful record.

This record should be for the academics, a great inspiration for them to try to achieve what has been accomplished by their predecessors. Especially should they notice and profit by the wonderful exhibition of studiousness put fourth by two members of the afore mentioned class, as we believe E. T. Daniel and Zeke Martin have never been equaled in their special line, that of studying.

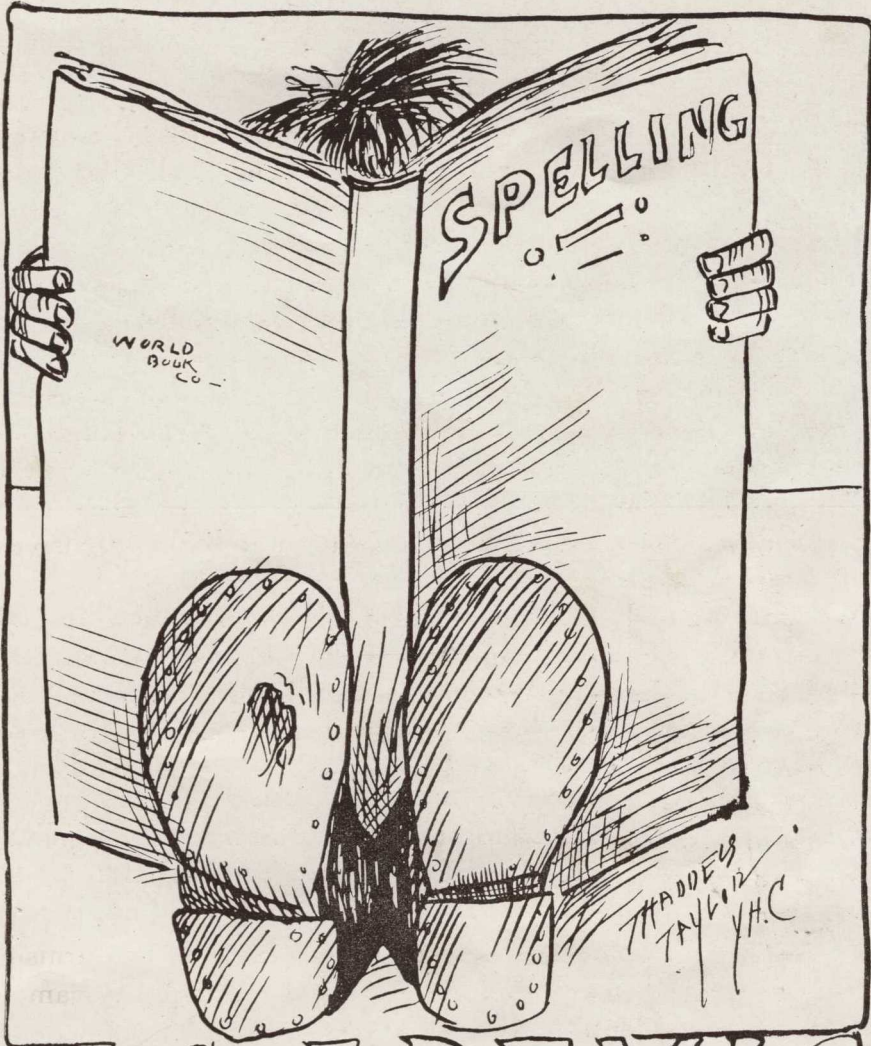
We have the honor of being the only "Fresh" class in the college, and we consider it quite an honor not to be offensive to anyone's olfactory nerves.

We have a goodly number of preachers represented in our class and in after life we expect our class to be well represented in the ministerial line. Messrs. Atkinson, Tucker, Wright, Ridley, Griffith, and Crockett will at some future time gain great fame as preachers and evangelists, so our virtue and honor will be ably upheld.

In athletics we excell, having a few of the finest athletes in school claiming old gold and black as their colors. We might add here that the class is proud of having them as members and offer them their due recognition.

In the societies our class is well represented and we furnish to both societies good material for future prospects for Champion Debaters and Presidents of the Societies.

Although we are the youngest class in the college we are old enough to "walk about" some, as anyone will testify who has seen a basketball game between the "Freshies" and one of the other teams.



ACADEMIC



Second Academic Class

MEMBERS

BELL, VICTOR
 BERRY, VIANNA
 BRYSON, OTILEE
 BUCHANAN, THAD
 CLAY, LOIS
 CLAY, REESIE
 CULPEPPER, TOM
 DOSS, GRACE

HOWARD, CLARA
 HOOD, PAULINE
 HOOD, EDWIN
 HOWELL, TODDIE
 HOLLAND, ANNIE LOU
 JACKSON, LEONA
 JACKSON, LILLIE
 JOHNSON, DORINDA
 JOHNSON, NELLIE

OWENS, BESSEMA
 RHODARMER, LOWERY
 RHODARMER, NOAH
 SMITH, ROSSER
 STURDIVANT, ALPHEUS
 TURNER, JESSE
 UPSHAW, HARRISON
 WEAVER, HARRY



Pauline Snow
 First Academic Class

MEMBERS

- | | | |
|--------------------|---------------------|-------------------|
| BERRY, FLOYD | DODD, DOROTHY | ROBINSON, PAULINE |
| BERRY, TEDDY | DUCKWORTH, PEARLE | ROBINSON, MARTHA |
| BERRY, ULMA | ELLIOT, DOUGLAS | STEPHENS, LEWEY |
| BERRY, DOLLIE | HALL, DIXON | STEPHENS, LOUISE |
| BRIDGES, SIMMS | JENKINS, CHARLIE | STEPHENS, MCKIM |
| COKER, MATTIE | JOHNSON, LENORE | SOUTHER, MAY |
| CORN, ELLEN | LEWIS, PEARL | SILVEY, JESSIE |
| COLEMAN, LOIS | MITCHEM, LAWRENCE | TAYLOR, THADEUS |
| CALDWELL, SNOW | MITCHEM, MARGUERITE | TAYLOR, GOODWIN |
| CLEMONS, MARGARET | MCADAMS, FRITZ | TOWNSEND, RUBY |
| CLEMONS, ELIZABETH | MCADAMS, PHILIP | WELBORN, OSMAN |
| | OWENS, MABEL | |

Snow



Music Class

MISS BONNIE MAYE ALEXANDER, *Teacher*

MEMBERS

ALLEN, KATE	CLAY, REESIE	MITCHEM, MARGUERITE
ANDERSON, GLADYS	DODD, RUBY	OWENS, BESSEMA
ALEXANDER, FANNIE	DODD, DORTHY	PUCKETT, ANNIE MOUDE
AIKEN, LEILA	GLENN, CLARA	ROGERS, FANNIE
BURT, ALMA	GILLISPIE, STELLA	SEGARS, DELREE
BROOM, RUTH	HARDY, MARY	SEGARS, ILA MAE
COLEMAN, LOIS	HOLLAND, ANNIE LOU	STEPHENS, LOUISE
COLEMAN, WILMA	JENKINS, ETHEL	SMITH, MILDRED
COKER, JESSIE	JOHNSTON, EUGENE	SOUTHER MAYE
<i>Emma J.</i> CALDWELL, DON	JOHNSTON, LENOIR	TAYLOR, LOVIC
CORN, GRACIE	LEWIS, PEARL	WOOD, MARY LOU
CORN, ELLEN	McAFEE, ALICE	WOOD, VADA LEE
CLAY, LOIS		WEEKS, MAYE



Art and Penmanship Classes

ART

ALLEN, KATE
 ALEXANDER, FANNIE
 ANDERSON, GLADYS
 BROOM, LETHA
 COKER, CALLIE
 GREEN, IVA
 GLENN, CLARA
 HOPKINS, ETHEL

HOLLAND, ANNIE LOU
 HALL, MONITA
 HOWELL, BESSIE
 JOHNSON, EUGENE
 KING, IRENE
 LOWE, NINA
 McADAMS, FRITZ
 MITCHEM, MARGUERITE
 McAFEE, ALICE

OWENS, BESSIMA
 SMITH, MALCOLM
 STANTON, RHODA H.
 SATTERWHITE, SARAH
 SATTERWHITE, CHLOTILDA
 SEGARS, ILA MAYE
 TINGLE, GLADYS
 BROOM, RUTH

PENMANSHIP

BURT, ALMA
 DAVIS, REUBEN
 DANIEL, E. T.
 GLENN, CLARA

HALL, MONITA
 HOLLAND, HARVEY
 PUCKETT, H. C.
 MATHIS, MABEL

RIDLEY, B. A.
 RHODOMAR, J. L.
 TAYLOR, TOM
 WARWICK, JESSE



Expression Class

ANDERSON, LOIS
 BAILEY, J. L.
 BISSETT, ETHEL
 BURT, ALMA
 CLEGG, ROBERT
 COPELAND, ROBERT
 CORN, ELLEN
 CROW, MAUDE
 DAVIS, R. H.
 DODD, CLIFF
 DOSS, GRACE
 EVANS, HIRAM
 FORREST, ALMA

GRIFFITH, G. S.
 HALL, ERLINE
 HARDY, MARY
 HOLLAND, ANNIE LOU
 JOHNSTON, WILLA MAE
 JONES, MYRTIE
 KEITH, THELMA
 KING, IRENE
 LONG, T. J.
 LOWE, NINA
 MATHIS, MABEL
 MITCHEM, MARGUERITE
 McMULLEN, A. M.

RHODARMER, NOAH
 SATTERWHITE, CHLOTIEDE
 SMITH, BESSIE
 SMITH, DILLARD
 STARLING, MITILDA
 STRICKLAND, KATHLEEN
 STURDIVANT, ALPHEUS
 TAYLOR, GOODWIN
 TAYLOR, THADEUS
 WILBANKS, BETHENIA
 WALLIN, PEARLE
 WILBANKS, PEARLE



Commercial Department

MEMBERS

ALEXANDER, FANNIE LOU	CROW, MAUDE	McMULLEN, MAURICE
BERRY, W. C.	COLEMAN, ROBERT	OWENBY, MARIE
BERRY, CARTER	DEAN, WILBUR	PUCKETT, HOYT
BOWMAN, WILSON	DAVIS, R. H.	PARKER, W. T.
BASKIN, MILTON	DAVIS, MRS. R. H.	SMITH, BESSIE
BOND, ELLIS	DANIELS, E. T.	SMITH, DILLARD
BROWN, SHELDON	GLENN, CLARA	SATTERWHITE, SARAH
BUCHANAN, THAD	GILLISPIE, STELLA	TANNER, HORACE
BAILEY, J. L.	HALL, ERLINE	THOMAS, JAMES
CHANCEY, HERBERT	HALL, DIXON	UPSHAW, HARRISON
COFER, KELLEY	HOOD, EDWIN	WALLIN, PEARLE
CRAWFORD, J. P.	HARDY, MARY	WHITEFIELD, ADGER M.
CORN, DENNIS	JENKINS, NORA	WRIGHT, LOUIS
	WEAVER, HARRY	



ABOUT THE PLACE

Religious Organizations





Susan B. Harris Chapel

S. E. HAMRICK, Sunday School Superintendent

A movement is now afoot here to organize a Y. M. C. A., with a substantial building for same as its aim. All lovers of the College will no doubt be anxious to assist the movement.



W. E. PURCELL,
PASTOR M. E. CHURCH, SOUTH



Ministerial and Student Volunteer Band

R. E. CLEGG, *Pres.*
 ATKINSON, H. P.
 DOSS, GRACE
 HALL, PROF. J. L.
 HOLLAND, H. C.
 HOLLAND, ANNIE LOU
 MCKIBBEN, CHAS. R.
 PURCELL, W. E.
 RAY, MRS. FRED H.

ETHEL PEAVEY, *Sec'y.*
 RAY, FRED H.
 RIDLEY, B. A.
 STANTON, PROF. E. M., JR.
 STANTON, MRS. E. M., JR.
 STARLING, MATILDA
 TUCKER, J. S.
 WARWICK, JESSIE
 WALKER, I. C.

WRIGHT, LEWIS



TEMPERANCE SOCIETY

Temperance Society

FRED MAXWELL, *Pres.*

HOWARD CARLTON, *Sec'y.*

BERRY, F. C.
CLEGG, ROBERT
CORN, ELLEN
CROW, MAUDE
CROCKETT, B. C.
DEAN, MARINE
DODD, SIM
DODD, HUBERT
DOSS, GRACE
GRIFFITH, G. S.

HIGDON, W. Q.
HOLLAND, H. C.
HOLLAND, ANNIE LOU
HALL, DIXON
HORTON, E. B.
JONES, MYRTIE
KEITH, THELMA
MCKIBBEN, CHAS. R.
PUCKETT, HOYT
RAY, F. H.
RAY, MRS. F. H.

SMITH, BESSIE
STARLING, MITILDA
STURDIVANT, ALPHEUS
TAYLOR, GOODWIN
WALKER, I. C.
WARWICK, JESSIE
WALLIN, PEARLE
WRIGHT, J. L.
WHITEFIELD, ADGER M.
STRICKLAND, KATHERINE

HONORARY

DODD, RUBY
DODD, FRANCES
DODD, CLIFF

GILLISPIE, STELLA
HOPKINS, ETHEL
LAWRENCE, NENA

NORTON, MAX
PEAVEY, ETHEL
WILBANKS, PEARLE



Epworth League

MEMBERS

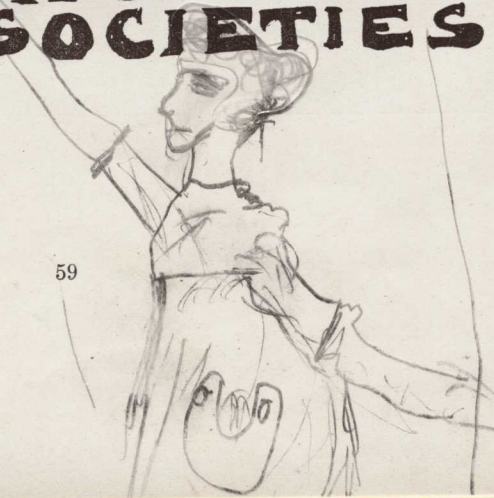
I. C. WALKER, *Pres.*

CORINE SEGARS, *Sec'y.*

CLEGG, ROBERT	JONES, MYRTIE	STRICKLAND, KATHLEEN
CROCKETT, BARNIE	McKIBBEN, CHAS. R.	STARLING, MATILDA
CARLTON, HOWARD	RAY, FRED H.	STANTON, E. M., JR.
GOWER, DEWEY	RAY, MRS. FRED H.	STANTON, MRS. E. M., JR.
GRIFFITH, STERLING	RIDLEY, AZALEE	WHITEFIELD, ADGER
HOLLAND, ANNIE LOU	SMITH, LAWRENCE	WRIGHT, LEWIS
HOLLAND, H. C.	SMITH, BESSIE	WALLIN, PEARLE
HOWARD, HETTIE	STURDIVANT, ALPHEUS	WARWICK, JESSIE



LITERARY AND-
DEBATING &
SOCIETIES





PHI CHI LITERARY AND DEBATING SOCIETY

↑
 LON
 Vernie Lawrence - Lon has son
 Vernies Brother's sister is so proud
 of it

Phi Chi Literary and Debating Society

BRYAN JOLLY, *Pres.* J. BART STROUD, *Vice Pres.* W. M. VEAL, *Sec'y*

LON DUCKWORTH, *Treas.*

MEMBERS

ALLISON, LOY
BELL, A. J.
BERRY, F. C.
BERRY, M. C.
COLEMAN, ROBERT
DEAN, WILBUR
GILLIAM, OTIS
HORTON, E. B.
HAMRICK, HUBERT
LONG, T. J.
MASSENGALE, LEONARD
MILLER, DWIGHT
POWLEDGE, JAS.
DE FOOR, JAS.
GARY, PAUL
TAYLOR, TOM

STURDIVANT, ALPHEUS
SMITH, LAWRENCE
ROSSER, FRANK
EVANS, HIRAM
PUCKETT, HOYT
SMITH, DILLARD
UPSHAW, HARRISON
BEASON, D. D.
CRAWFORD, J. P.
ROSSEE, JOS.
GILMER, FORD
CORN, DENNIS
HOPE, E.
PRICKETT, CHAS.
MARTIN, CHARLIE
TURNER, CHAS.



THE PHILADELPHIAN LITERARY SOCIETY

Philadelphian Literary Society

ALICE McAFEE, *Pres.* RUTH BROOME, *Vice Pres.* MILDRED SMITH, *Sec'y.*

BURFORD, KATHLEEN
CROW, MAUDE
COOK, EULA GEORGE
DUCKWORTH, PEARLE
FORREST, ALMA
HOWARD, HETTIE
HOWARD, CLARA
JOHNSTON, EUGENE
JOHNSTON, LENORA
JONES, MYRTIE
KEITH, THELMA
LAWRENCE, NENA

LOWE, NINA
MATHIS, MABEL
HORTON, LUCY
OWENS, BESSEMA
OWENS, MABEL
PEAVEY, ETHEL
PUCKETT, ANNIE LOU
ROGERS, FANNIE
SELF, ILA
TINGLE, GLADYS
WALLIN, PEARLE
WILBANKS, PEARLE



YOUNG HARRIS DEBATING SOCIETY

Young Harris Debating Society

J. L. BAILEY, *Pres.*

ADGER M. WHITEFIELD, *Vice Pres.*

H. C. CARLTON, *Sec'y.*

W. Q. HIGDON, *Treas.*

MEMBERS

ALLISON, MARVIN

KING, DOYLE

BOWMAN, WILSON

LONG, CRAWFORD

BROWN, S. A.

MAXWELL, FRED

BUCHANAN, T. M.

McKIBBEN, CHARLES

CLEGG, ROBERT

McMULLEN, A. M.

COFER, K. C.

RIDLEY, B. A.

CROCKETT, B. C.

SEAY, J. W.

DAVIS, R. H.

TANNER, H. G.

DANIELS, E. T.

THOMAS, JAS.

DODD, CLIFF

WALKER, I. C.

DODD, SIM, JR.

WARWICK, JESSIE

GRIFFITH, G. S.

WEAVER, HARRY

HALL, DIXON

WRIGHT, J. L.

HOLLAND, H. C.

HONORARY MEMBERS

BRIDGES, SIM

GRAY, RALPH

CHANCEY, HUBERT

JOHNSON, C. O.

CULPEPPER, T. W.

PATTEN, DEWEY

DODD, HUBERT

RAY, FRED H.

GOWER, DEWEY

TAYLOR, GOODWIN

TEAGLE, R. R.



SUSAN B. HARRIS SOCIETY

Susan B. Harris Literary Society

ERLINE HALL, *Pres.*

KATHERINE STICKLAND, *Vice Pres.*

IRENE KING, *Sec'y.*

ANDERSON, LOIS

ANDERSON, GLADYS

ALLEN, KATE

ALEXANDER, FANNIE

AKIN, LELIA

BISSETT, ETHEL

BURT, ALMA

CLAY, RESSIE

CLAY, LOIS

CORN, ELLEN

CLEMONS, MARGARET

COLEMAN, LOIS

CLEMONS, ELIZABETH

CALDWELL, DON

DODD, FRANCES

DODD, RUBY

DODD, DOROTHY

DOSS, GRACE

DEAN, MARINE

GILLISPIE, STELLA

GLENN, CLARA

HOLLAND, ANNIE LOU

HALL, MONITA

HARDY, MARY

HOPKINS, ETHEL

JOHNSON, NELLIE

MITCHEM, MARGUERITE

ROARK, BELLE

RAY, MAY

ROBINSON, PAULINE

ROBINSON, MARTHA

SATTERWHITE, CHLOTILDA

SMITH, BESSIE

SEGARS, ILA MAE

STARLING, MITILDA

SMITH, MALCOLM

SEGARS, CORINE

STEPHENS, LOUISE

WOOD, VATA LEE

WOOD, MARY LOU

WEEKS, MAY



Champion Debaters

PHI CHI CHAMPION DEBATERS

T. J. LONG, Jr.

E. B. HORTON

A. J. BELL

YOUNG HARRIS CHAMPION DEBATERS

M. A. ALLISON

F. H. MAXWELL

H. G. TANNER

A Twice Stole Tale

S. B. T.

BECAUSE Nero was a stranger in those parts, a type of innocence abroad, he was not aware how great a number of cloaks of charity would be required to cover his inadvertent dropping in at a long New England sermon of the 1635 model some where about the year ditto. His fat, round face showed up the congregation to be deciples of Hard Times. The only hopeful sign was a great nasal uplift caused by long conversation of the elevated kind through the nose.

The open arena between the pulpit and the pews appeared to the bronze bearded emperor contemptibly small, and there seemed to be no gratings in the surrounding walls through which to liberate wild beasts. He wondered why the audience was so silent and still and why no upstart yelled, "Ahenabarbus."

Just then a little man dressed in front with spectacles mounted the pulpit and cleared his throat for action.

"I'll stake Poppaea," muttered Nero, "against the smile of a Vestal Virgin that this is a contest in oratory, and that I can beat that guycus at his own ludes."

After a few preliminary remarks read from a book, which the Emp did not understand, the little fellow began to speak. Soon there were some remarks about Christians.

"Christians," thought Nero, "I wonder how he ever found out about them? I extracted all the amusement out of them for the Roman populace years ago. Anybody can see that."

"Before we can be safe Rome must be destroyed, must be burned with fire," cried the preacher, "The Pope, the great beast must be conquered."

"That sounds familiar, too," thought Brownbeard, "I am right with him there; and if he were well informed, he would know that I have already burned Rome. Julius conquered everybody; I suppose that he *veni-vidi-vici*ed the Pope, too."

"But the way he speaks—he doesn't remind me of Petronius at all. I can't think of Petronius when he nasalates.—Let me see. He speaks of the glory of Christians being put to death: his views seem to agree with mine there. He touches my real heart when he

says Rome must be burned. Undoubtedly he considers the emperors great kaisers to conquer the Pope.—What does Petronius matter?”

“You are obligated and bound to join us,” yelled the speaker; “there is no safety without it.”

“Join, join,” mused Nero; “that means in plain Latin ‘Coniungere. That seems to be a good thing. Perhaps I had better—but no—yes I will; every time I have hesitated I have lost time. I’ll jo—”

His muse was never finished. Someone had touched him on the shoulder. He looked up into the faces of Rip Van Winkle and the Gray Champion.

“You have been here long enough,” whispered Rip, as they led him gently out by the elbows. “Come on, we have just bored into a new cask up in the Katskills.”

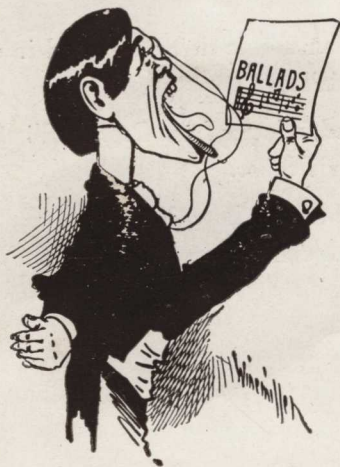




Glee Club

T. J. LONG, *Director*

THE present Glee Club is the best that the college has ever had. It has many star singers. Among whom, are E. T. Daniels who is noted for his harmonious soprano. Tom Long with his bass, and Marvin Allison bringing up the tenor have often held the audience spellbound. Mildred Smith singing soprano and Fannie Rogers and Ila Mae Segars with their sweet and melodious alto, wafts you away to some enchanted land of flowers.



Splits and Splinters

By HIRAM EVANS, '19

Holland: "I have never seen Clegg with the same girl twice."

Bowman: "That speaks well for the girl."

Veal: "Say, Tom what kind of a voice has Allison?"

Long: "Allison has a mellowest voice in the club. In fact it is so mellow that it is almost rotten."

Prof. Johnson: "So many women marry for money, you wouldn't marry me for money would you?"

Miss Rogers: "No, I wouldn't marry you for all the money in the world."

Warwick: "Will you marry me?"

Miss Broom: "But I love another from the bottom of my heart."

Warwick: "You dear girl! there is always room at the top."

Horton: "Say fellows, what time of the day is best for writing poetry?"

Crawford: "Ebb if I was in your place I would start at 8:30 and stop at quater til nine."

Turner: "Where in the world is that terrible odor coming from?"

Baskin: "Oh don't get excited, it is only John Bailey in the next room pulling off his shoes."

"Dear Mr. Martin, your son is doing no good in school. He stands at the foot of his class."—Prof. Hall.

"Dear Charles, Inclosed, a letter from Prof. Hall. Son you are breaking your old Father's heart."—Your Father.

Dear Pa: "Prof. Hall hasn't been here long, and hasn't learned that they teach the same thing at both ends of the class."—Your Devoted Son Charles.



The Hickey Club

Motto: "*Crescite et Multiplicamini.*"

Officers:

Imperial Ruler: THOMAS JEFFERSON LONG, JR.

Potentate: JOHN LENORED BAILEY

Rhadamanthus: MARVIN AUGUSTUS ALLISON.



HE Hickey Club was founded February 13, 1918. First conceived by M. A. Allison, J. L. Bailey, T. J. Long, Jr.

The duty of the Imperial Ruler is to preside at all meetings with an air of dignity and solemnity and shall use unsequestered and supereragated expressions.

The duty of the Potentate to be subserviant to the Imperial Ruler in all questions. That he shall administer to his wants and appetites and all the wants that elopes from the abyss of his mentality.

The duty of the Rhadamanthus is to carry out all Autocratic, mandamuses of the Imperial Ruler. Also he shall offset all procedures that would retard the utilitarianism of the fraternity and shall be supervisor of the treasury.



SNAPPY SNAPSHOTS

ATHLETICS





Senior Baseball

Top Row—ALLISON, L. F., MAXWELL, 2nd Base, TANNER, C. F., BELL, Sub., ROSSER, SS., LONG, C.

Bottom Row—BOWMAN, 1st Base and Manager, JOLLY, P. and Capt., Bailey, 3rd Base, THOMAS R. F., DAVIS, Sub.



BASEBALL in the Senior Class is at its zenith. The warm Spring weather has elicited a tide of enthusiasm from its ranks that will be no simple problem for the under Classmen to solve. In the box they are favored with the swift balls of Jolly, and in the outer garden Bailey and Allison are unequalled.

Young Harris College

A Junior College under the control of the Southern Methodist Church.

Nineteen-hundred twenty-eight feet above sea level in a quiet mountain village.

Board, Laundry, Tuition and Lights, only fourteen dollars per month.

Two large dormitories, ten room class building, spacious chapel, several cottages, steam heat and electric lights.

Library of five thousand volumes with reading room.

Well equipped Physical Laboratory.

Literary Courses, Music, Art, Expression, Domestic Science, Commercial Courses.

Teaching corps of fourteen.

For particulars apply to

Rev. Jno. L. Hall, President



Junior Baseball

Top Row—COLEMAN, C., CRAWFORD, 3rd Base, TURNER, R. F., HORTON, Sub., SMITH, C. F.

Bottom Row—HAMRICK, L. F., BASKIN, 2nd Base and Capt., VEAL, S.S. and Manager, POWLEDGE, P.; STROUD, 1st Base.

UNDER the supervision of Veal, the wily pilot of the Junior baseball nine, is hope for this class. Although the Juniors very seldom win, they never become discouraged, and always play with a deep determination to conquer and never fail to keep the higher ideals of the game in view.

Wofford Terrell Company

Murphy, N. C.

Wholesale Dealers in

Groceries, Dry Goods, Notions, Feeds, Cow Peas,
Hay, Beans, Eggs, Live Poultry and Fertilizers

WE SOLICIT YOUR BUSINESS

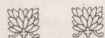
We call your attention to the leading sellers in the territory

OUR SPECIAL BRANDS

“MURPHY”
Work Shirts

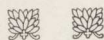
“BIG CHIEF”
Overalls

J. H. Stephens



Dealer in

Notions, Groceries, Tobacco,
Drugs, Candies, Stationery,
School Supplies, Coffins,
Caskets, and Automobile
Supplies :: :: ::



Young Harris, Ga.
Shipping Point - MURPHY, N. C.
L. & N. R. R.

W. R. Jenkins

The College
BARBER

—IN—

JENKIN'S HOTEL
Work Guaranteed



Sophomore Baseball

Top Row—GARY, C., ROSSEE, 2nd Base, GILLIAM, L. F., LAWRENCE, R. F., KING, 3rd Base and Manager.

Bottom Row—BEASON, Sub., ECHOLS, 1st Base, BROWN, S.S., LONG, P. and Capt., PRICKETT, C. F.

AMONG the Sophomores is a husky bunch of youngsters baseballlically inclined, and there is no doubt as to their ability on the diamond. With this team of gifted stars it will be no hard task for them to cope with the other classes. The twirling of Long and the heavy hitting of King and Brown won favor among the Fans.

W. M. FAIN
Grocery Company

Wholesale Exclusively

GROCERIES

FEED, AND

PRODUCE

MURPHY, N. C.



Freshman Baseball

Top Row—UPSHAW, C. F., GRAY, R. F., JOHNSON, Sub., GILMER, 2nd Base, BOND, 3rd Base.

Bottom Row—MARTIN, 1st Base, BUCHANAN, P. and Capt., DANIEL S.S. and Manager, WEAVER L. F., TAYLOR, C.

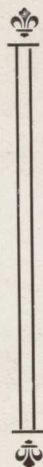
CHAS. BISSET, Mascot



DANIEL manipulates the baseball phrase of the Freshman Class and his work in rounding up the nine is marvellous. The baseball diamond has never been blessed with such scintillating stars and their feats on the field has caused many an OH! in the bleachers. Buchanan, the clever twirler is also a heavy hitter.

A GOOD STORE

Made to Measure Suits



CAMERAS
STATIONERY
FRESH CANDIES
JEWELRY
SCHOOL SUPPLIES
GENT'S FURNISHING
NOTIONS
FANCY GROCERIES

Eyes Fitted with Hawkes Famous Glasses

*Agents for Westover, Virginia Gentlemen
.... and Wall Street Battle Axe Shoes*

FOOT REST

HOSIERY

Spalding Athletic Goods

W. E. Matheson & Company

College Street :: :: :: Near Campus



Senior Basket-ball

Top Row—ROSSER, Guard, LONG, Sub.

Bottom Row—MAXWELL, Forward and Captain, TANNER, Forward and Manager, BOWMAN,
Center; JOLLY, Guard.



IN BASKETBALL the Seniors rank first, and there is no doubt in the minds of the Fans as to them winning the "rag," in fact every game in which this husky quintette has played, the game is always a two-sided affair. The field goals from midcourt, by Bowman are the leading features of every game in which the Seniors participate. The Seniors deserve all the praise there is.

Safety, Service and Satisfaction

The three distinguishing features of our policy are Safety, Service and Satisfaction.

SAFETY: We believe that every banker and every depositor should place safety first. That is not only our belief, but our invariable practice as well. Every transaction passing through this bank must stand the test of safety first.

Then there is our insurance of deposits. Another positive protection. A small thing to say, but a big thing to have.

SERVICE: Proper banking service today embraces a multitude of helpful aids beyond the usual facilities of a safeplace to put your money. All of our facilities for service are freely at the command of our customers.

SATISFACTION: It is the constant aim of this Bank to give its customers satisfaction. We are much gratified to feel that we have constantly succeeded in doing this. The simple term "satisfaction" covers the whole range of banking.

You can do your banking by mail conveniently and satisfactorily. We give special attention to the business of our numerous mail customers.

BANK OF HIAWASSEE

HIAWASSEE, GA.



Junior Basket-ball

From Left to Right—BASKIN, Sub., STROUD, Guard and Captain, VEAL, Guard, COFER, Center, HAMRICK, Forward and Manager, COLEMAN, Forward, HORTON, Sub.

ON THE basketball court the Juniors always have sympathetic hearts, and never cause the other classes to suffer defeat. They always play hard against their large opponents, but all in vain. They accept the slams and knocks with a smile, and never a whimper at the knocks they get from the Sophs and Seniors.



You Young Fellows Who Go Away to School

want the right style and quality. We especially specialize in Young Men's Apparel. If you order from us you will get style and quality. The best is the cheapest. Truer now than ever before.

FOR QUICK SERVICE

BROWN & DAVIDSON

Phone 85 - Murphy, N. C.

The Home of Good Clothing, Shoes and Hats



E. C. MOORE

Watchmaker
and Jeweler

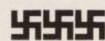
MURPHY, N. CAROLINA

Engraved
Invitations

for
Receptions, Dances, Debates, Etc.

Fraternity Stationery
Visiting Cards

Send for Sample and Prices



J. P. STEPHENS

Engraving Company
ATLANTA :: GEORGIA

Dr. E. C. Wellborn

DENTIST

Office at
Residence Young Harris, Ga.



Sophomore Basket-ball

From Left to Right—KING, Forward, BROWN, Guard, STEPHENS, Captain, LAWRENCE, Forward and Manager, BEASON, Sub, LONG, Center.

THE Sophomore basketball team has the second place in their grip and have fought hard for the place. On the court Lawrence is always on the job, and Long, the husky center for the Sophs, plays a great game. In the matter of roughness and hard play they never fail to keep the Fans at a high point of enthusiasm.

We Ask You to Examine

the financial statement of this bank on this page. If your patronage and influence have, in any degree, contributed to the success of our business, we thank you for it. If, as yet, you are not a patron, let this be your invitation to become one.

Report of Condition at Close of Business JANUARY 15, 1918

RESOURCES

Loans and Discounts.....	\$167,424.19
Banking House and Fixtures.....	4,600.00
U. S. Stocks and Bonds.....	2,500.00
Cash in Safe and Other Banks.....	60,559.91
Total.....	<u>\$235,084.10</u>

LIABILITIES

Capital Stock.....	\$ 30,000.00
Undivided Profits, net.....	4,031.44
Deposits.....	201,052.66
Total.....	<u>\$235,084.10</u>

BANK OF MURPHY

Murphy, - - - - - North Carolina



Freshman Basket-ball

From Left to Right—BUCHANAN, Guard, TAYLOR, Forward and Captain, UPSHAW, Forward, GRAY, Guard, DANIELS, Sub, MARTIN, Center and Manager.

THE Freshman quintette, under the management of Martin is a fast team, and always put a touch of uneasiness on the opposing team. They play hard and there is a touch of sportsmanship tinge in their playing that is hard for their husky opponents to reach. The Fresh team is indeed a flock of aspiring players.

Cherokee Hardware Company

—INCORPORATED—

Murphy, North Carolina

*WHOLESALE
HARDWARE*

Tinware, Stoves and Ranges,
Wire Fencing, Barb Wire,
Lime, Cement, Fertilizers,
Nisson and Carver Wagons,
Sash and Doors, and All
Farming Implements

Hotel Regal

J. S. MERONEY
Owner and Manager



Headquarters for U. C. T. and T. P. A.

RATES \$2.00, \$2.50 and
\$3.00 Per Day
MEALS - - - - 50 Cents

Special Rates by the Week

HOTEL REGAL - - Murphy, N. C.

Girls' Basket-ball



JUNIOR-FRESHMAN

BROOM, RUTH
CALDWELL, DON
GILLISPIE, STELLA
HOPKINS, ETHEL
LAWRENCE, NINA
McAFEE, ALICE

SENIOR-SOPHOMORE

ALLEN, KATE
HALL, ERLINE
KING, IRENE
SEGARS, ILA MAE
SMITH, MALCOLM
TINGLE, GLADYS



SILVEUS OPTICAL COMPANY

Optometrists and Opticians

Builders of Fine Spectacles and Eye Glasses

Expert Developing and Printing—Films

◊ MAIL ORDERS SOLICITED ◊

— Phone M-601 —

19 South Broad Street, Cor. Alabama
ATLANTA, GEORGIA

*Note: From personal experience I recommend the work of
Dr. Silveus as being absolutely satisfactory.*

Fred. H. Ray, Bus. Mgr. "Arbutus."

ESTABLISHED 1892

Stephen Lane Folger

(Incorporated)

Manufacturing Jewelers

CLUB AND COLLEGE PINS
AND RINGS

GOLD, SILVER and BRONZE
MEDALS

108 Broadway, New York

W. A. JACKSON
YOUNG HARRIS, GEORGIA

General Merchandise
and Country Produce

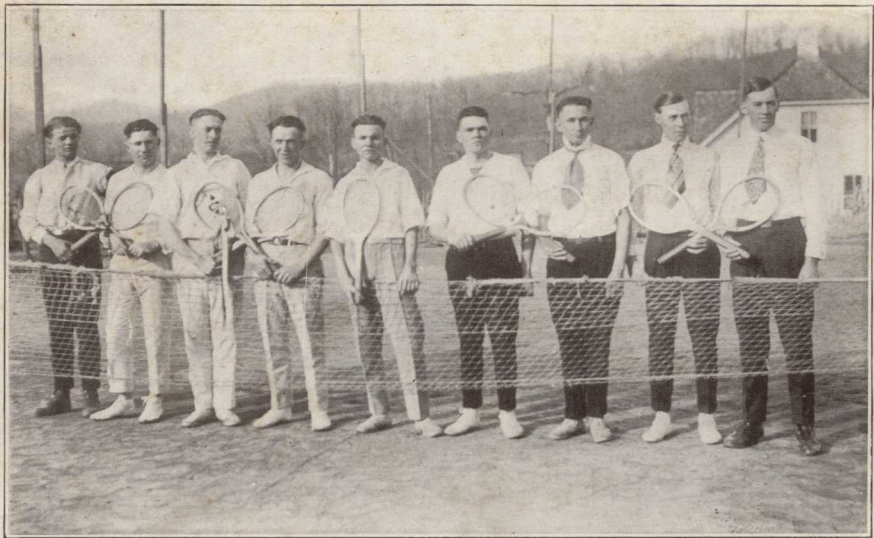
Call and examine my goods and prices
before buying elsewhere.

*Above all things one wants
his photographs to be first
class. That's the only kind
I make. All work of this
book was executed by me.*

W. J. HOOPER,
Robertstown, Ga.



TRACK TEAM



TENNIS CLUB

PREPAREDNESS

While you are preparing for life's work, keep in mind the fact that you will die some day, leaving loved ones and probably financial obligations. Protect these, and your old age by carrying a LIFE INSURANCE POLICY.

Ask the Faculty About It.

HERBERT TABOR, *General Agent*

Gainesville, Georgia

J. H. Caldwell

---OF---

YOUNG HARRIS, GA.

Is prepared to transfer students from Murphy to Young Harris at a uniform price of \$1.50 and 50 cents for trunks.

FIRST CLASS TEAMS AND HACKS

All should write him in advance, as this is cheaper than to get a hack at Murphy.

STUDENTS

Beware of the rumors that I do not carry less than a hack load, for I am ready and willing to transport any number, however small, at any time.

GEORGIA TECH.

Preparedness for PEACE and WAR

Students at Georgia Tech. are being trained for lives of greater service either in peace or in war. There is an ever-increasing demand from our government and our industries for men with thorough scientific or technical training. They are needed now, and they will be needed even more when the war is ended. Fit yourself for a position of responsibility and higher services.

Courses leading to a degree in *Mechanical, Electrical, Civil, Chemical and Textile Engineering, Chemistry, Architecture and Commerce.* Military training under U. S. Army Officers required of all students.

For further information address

The REGISTRAR

Georgia Tech.

ATLANTA, GA.

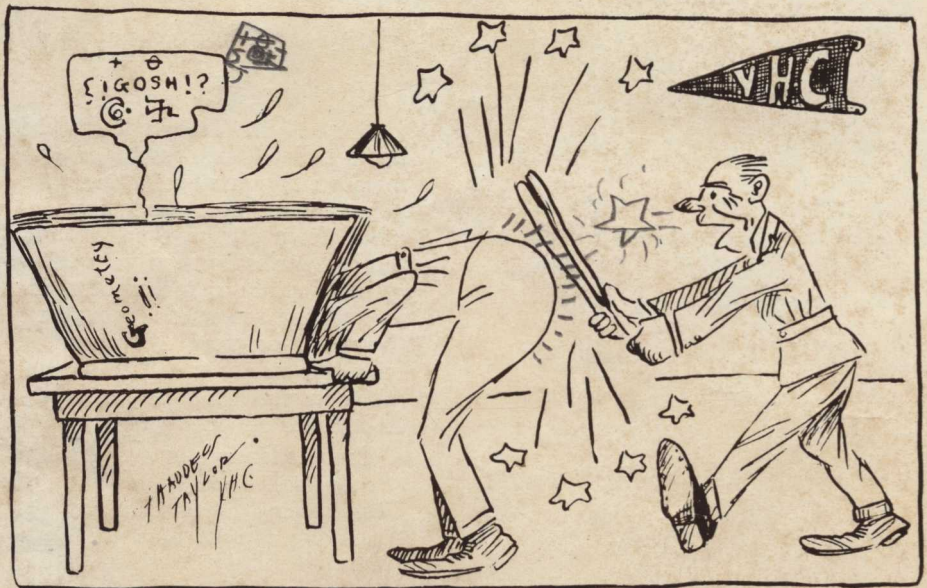
BASTIAN BROS. CO.

Manufacturers and Designers of

Class Pins, Rings, Medals

Engraved Commencement and Visiting Cards

554 Bastian Bldg., - - - Rochester, N. Y.



-- THE END --

