

DUCKWORTH LIB., YOUNG HARRIS COLLEGE




5 0839 00108269 2

ENOTAH



1950

Silver  *Anniversary*
of the

ENOTAH

YOUNG L. G. HARRIS COLLEGE

Young Harris, Georgia

VOL. XXV

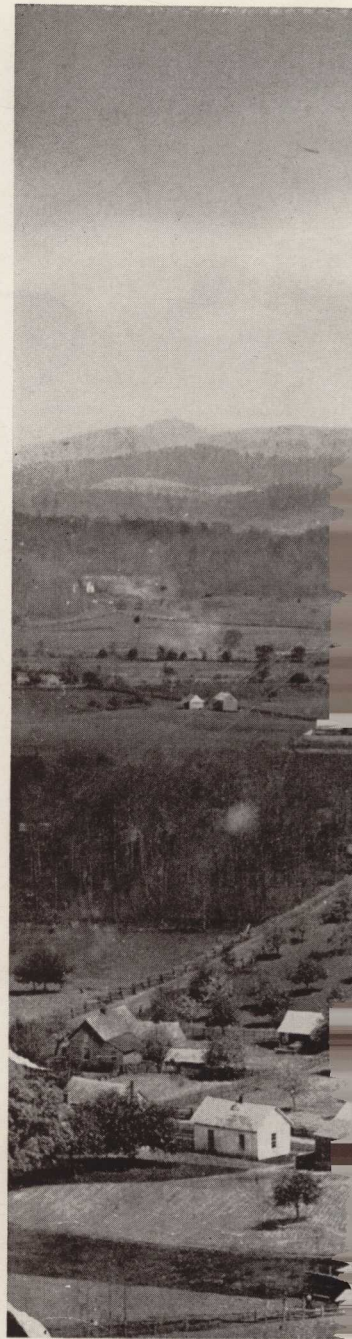


**PRESENTED BY
THE STAFF OF THE 1950 ENOTAH**

NANCY CARTER *Editor*

ZELL MILLER *Associate Editor*

RALPH COKER *Business Manager*



*Right: Young Harris before 1900.
Above: Entrance to campus, 1950.*



*Deep in the heart of the beautiful
mountains of North Georgia . . .*

12946

FOREWORD

In 1916 when the very first ENOTAH was published at Young Harris College, it was the symbol of hard work and loving care for all those who had had a part in its creation. It was followed by the ARBUTUS and the EXCELSIOR in 1918 and 1920. The fourth annual, published in 1921, was again called the ENOTAH. The name, which is the original Cherokee name for Bald Mountain and which seems best to typify the wealth of Indian lore in the early history of this region, has remained the same since then.

For a number of years between 1916 and 1950 there were no annuals at Young Harris. The 1950 annual is the twenty-fifth one that has been published here, even though it is not the twenty-fifth ENOTAH.

Young Harris College has evolved from one small structure to the present campus with its beautiful and modern buildings. We have tried to show in this edition a mixture of the old and the new, the changes that have taken place, the progress that has been made. These changes are, for the most part, physical ones, for Young Harris from its beginning has had a spirit that never changes. This spirit that has always made people love Young Harris is the friendly and Christian atmosphere that it possesses—wonderful to know, hard to describe. That spirit and the location of the college in the lovely valley encircled by impressive mountains have made Young Harris a unique institution, dear to the hearts of those who have come to know it.

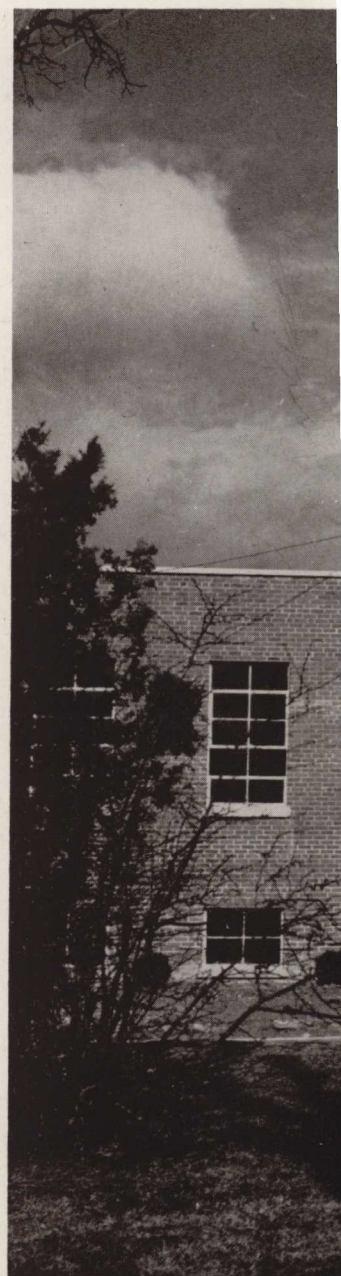
The ENOTAH staff proudly presents this Silver Anniversary Edition.

Below: From the 1921 ENOTAH.

Right: The new Pruitt-Barrett Memorial Building.



YOUNG HARRIS COLLEGE, IN 1887.





... Young Harris College has grown
from a modest beginning ...



FORMER STAFFS

1916 ENOTAH

REUEL R. WEBB *Editor-in-Chief*
 W. HERSCHEL WILEY *Business Manager*
 CHARLES S. REID *Assistant Business Manager*

1918 ARBUTUS

WALTER Q. HIGDON *Editor-in-Chief*
 BESSIE SMITH *Assistant Editor*
 FRED H. RAY *Business Manager*

1920 EXCELSIOR

ROBERT E. CLEGG *Editor-in-Chief*
 BERTHA GOOCH *Assistant Editor*
 JOS. F. SOSBY *Business Manager*

1921 ENOTAH

DEWEY G. STOVALL *Editor-in-Chief*
 LORENA BULLARD *Assistant Editor-in-Chief*
 WALLACE O. DUVALL *Business Manager*

1930 ENOTAH

T. M. BURCH *Editor*
 MARGARET APPLEBY *Associate Editor*
 KATHRYN DUKE *Associate Editor*
 H. G. JOHNSON *Business Manager*

1931 ENOTAH

CARL SASSER *Editor-in-Chief*
 HOKE BELL *Associate Editor*
 HATTIE DOBBINS *Associate Editor*
 HERMAN A. CANTRELL *Business Manager*

1932 ENOTAH

JOE C. VAUGHAN *Editor-in-Chief*
 AGNES BURNS *Associate Editor*
 HAROLD STANTON *Assistant Editor*
 RAYMOND DUNCAN *Business Manager*

1933 ENOTAH

HAROLD STANTON *Editor*
 ELISE O'QUINN *Associate Editor*
 LANCE OLIVER *Business Manager*

1934 ENOTAH

WILLIAM POPE *Editor*
 SARAH ASKEW *Associate Editor*
 BOB CHEEVES *Business Manager*

1935 ENOTAH

DICK BEST *Editor*
 MAUDE ADAMS *Associate Editor*
 BILL CUTTS *Business Manager*

1936 ENOTAH

BOB LANCE *Editor*
 SAM SMITH *Associate Editor*
 EMMETTE DANNER *Business Manager*

1937 ENOTAH

SAM SMITH *Editor*
 HOMER MORGAN *Assistant Editor*
 DAN BRUCE *Business Manager*

1938 ENOTAH

HOMER MORGAN *Editor*
 SARA STANTON *Associate Editor*
 JACK ROGERS *Business Manager*

1939 ENOTAH

CLYDE MCCARVER *Editor-in-Chief*
 ALICE ROSE LANCE *Associate Editor*
 TOM HARBIG *Business Manager*

1940 ENOTAH

MARION ARMOUR *Editor*
 HAZEL NEWTON *Associate Editor*
 HIRAM J. TODD, JR. *Business Manager*

1941 ENOTAH

JAMES BARROW *Editor-in-Chief*
 MARGARET HALL *Associate Editor*
 HENRY ERWIN *Business Manager*

1942 ENOTAH

EVELYN LEE *Editor-in-Chief*
 MAXINE HUTCHISON *Associate Editor*
 JOSEPH JONES *Business Manager*

1943 ENOTAH

WARREN JONES *Editor-in-Chief*
 LOIS MADDOX *Associate Editor*
 COMER BROWNLOW *Business Manager*

1944 ENOTAH

DONNALINE TURNER *Editor-in-Chief*
 JUDY DENMAN *Associate Editor*
 GLORIA NORRIS *Business Manager*

1945 ENOTAH

IRIS SALTER *Editor-in-Chief*
 MARY HELEN WILSON *Associate Editor*
 ROBERT ALEXANDER *Business Manager*

1946 ENOTAH

WALTER BROWN *Editor-in-Chief*
 TOMMY BOYLES *Associate Editor*
 HAZEL GILSTRAP *Business Manager*

1947 ENOTAH

CLARA B. GILSTRAP *Editor-in-Chief*
 MARK MARTIN *Associate Editor*
 RICHARD BURREL *Business Manager*

1948 ENOTAH

CLYDE LEE, JR. *Editor*
 VERNON WYNN *Associate Editor*
 MARY GARDNER *Business Manager*

1949 ENOTAH

ANN FLEETWOOD *Editor*
 GUY SHARPE *Associate Editor*
 DAN STONE *Business Manager*



*Left: Sharp Hall, 1921.
Right: Sharp Hall, 1950.*

*... through many years of
progress and change*

ALMA MATER

In Georgia where the mountains blue
Are pointing toward the sky,
There stands our Alma Mater dear,
There's where our hearts all lie.

* * *

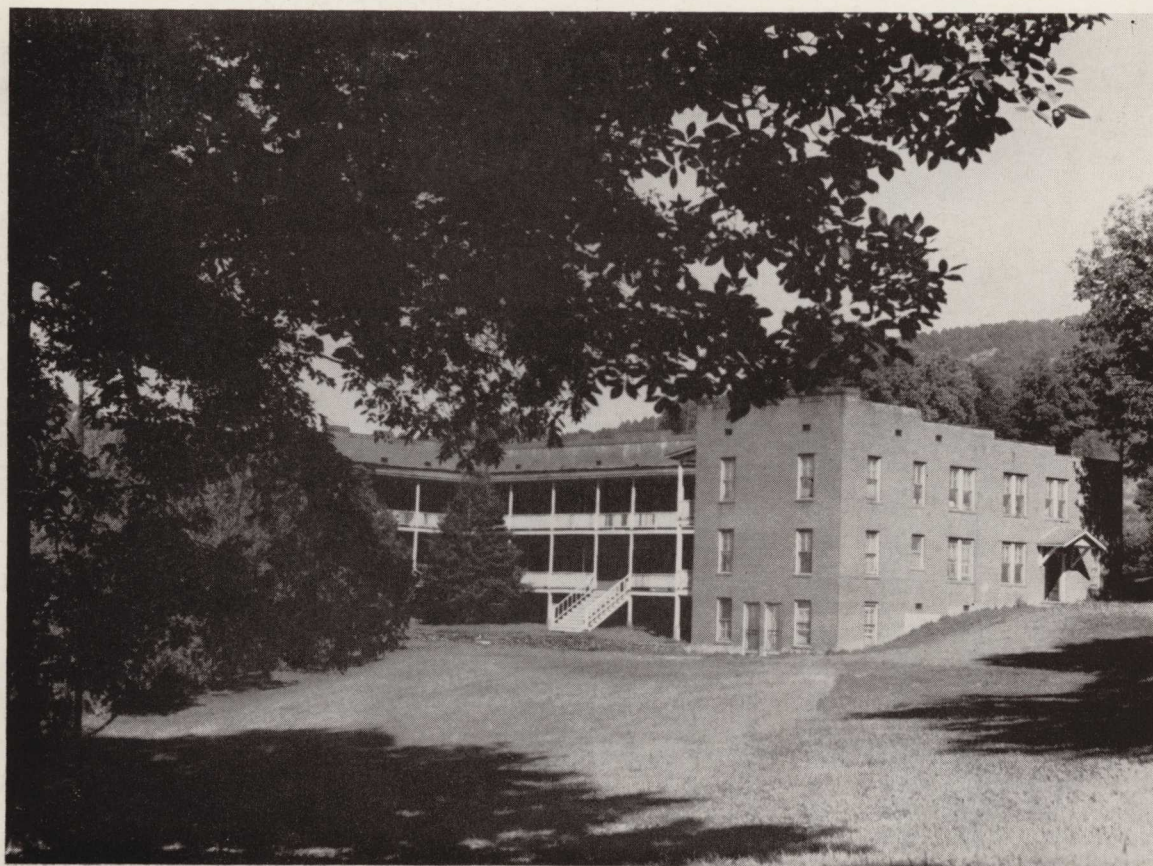
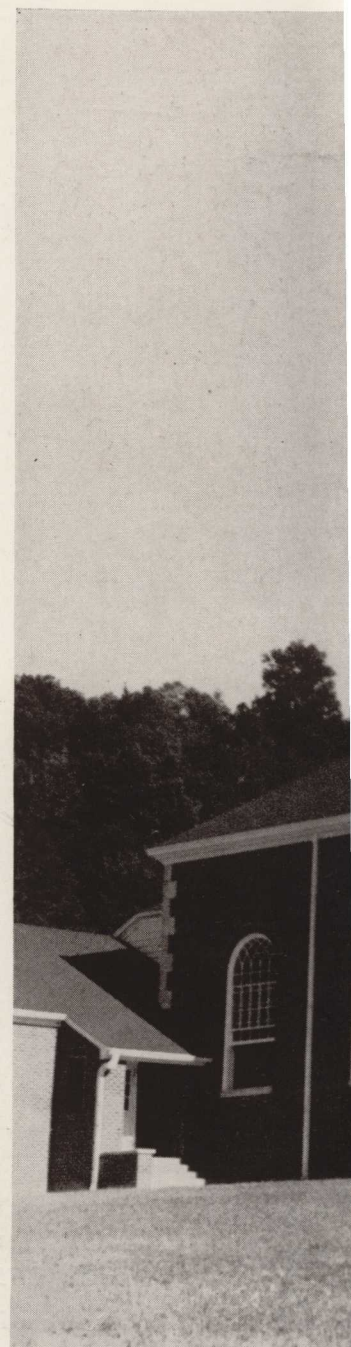
We're true to thee, dear Y. H. C.
Thy fame is our delight,
We hail thee, Alma Mater dear,
Thy purple and thy white.

* * *

Though time may pass o'er these dear halls,
We'll still come back to thee,
And still we'll cherish memories
Of our days at Y. H. C.

Right: Sharp Memorial Methodist Church.

Below: Peel Hall.





*... to our beloved Alma Mater
of today...*



DR. J. A. SHARP
from the 1930 ENOTAH

...because of the
and leadership of,

FORMER DEDICATIONS

1. 1916 The ENOTAH, T. J. Lance
2. 1918 The ARBUTUS, J. A. Sharp
3. 1920 The EXCELSIOR, S. B. Tolar
4. 1921 The ENOTAH, Col. W. L. Peel
5. 1930 The ENOTAH, Dr. J. A. Sharp
6. 1931 The ENOTAH, Mrs. J. A. Sharp
7. 1932 The ENOTAH, Thomas J. Lance
8. 1933 The ENOTAH, Prof. J. C. Camp
9. 1934 The ENOTAH, Scott B. Appleby
10. 1935 The ENOTAH, W. S. Mann
11. 1936 The ENOTAH, Young L. G. Harris
12. 1937 The ENOTAH, Col. Charles S. Reid
13. 1938 The ENOTAH, Prof. J. Worth Sharp
14. 1939 The ENOTAH, Rev. W. T. Hamby
15. 1940 The ENOTAH, Walter H. Rich
16. 1941 The ENOTAH, Prof. Leslie Jones
17. 1942 The ENOTAH, Ezra Sellers
18. 1943 The ENOTAH, W. L. Dance
19. 1944 The ENOTAH, Service Men and Women
20. 1945 The ENOTAH, Prof. and Mrs. S. B. Tolar
21. 1946 The ENOTAH, W. L. Dance
22. 1947 The ENOTAH, Mrs. J. A. Sharp
23. 1948 The ENOTAH, Mr. and Mrs. L. C. Atkins
24. 1949 The ENOTAH, Miss Edna Herren

*inspiration
many...*



DEDICATION

to

DR. DOW KIRKPATRICK

We love him because we know where he stands.

THE FACULTY

PRINCIPALS OF YOUNG L. G. HARRIS COLLEGIATE INSTITUTE

REV. MARK EDWARDS, January 1, 1886 to December 31, 1886*

REV. R. L. CAMBELL, January 1, 1887* to July 25, 1888

REV. E. A. GRAY, July 25, 1888 to June 15, 1889

PRESIDENT OF YOUNG L. G. HARRIS COLLEGIATE INSTITUTE

REV. C. C. SPENCE, June 15, 1889 to June 20, 1891

PRESIDENTS OF YOUNG L. G. HARRIS COLLEGE

REV. C. C. SPENCE, June 20, 1891 to November 22, 1894

REV. W. F. ROBINSON, November 22, 1894 to June 5, 1899

J. W. BOYD (Acting President) **, June 5, 1899 to August 15, 1899

REV. J. A. SHARP, August 15, 1899 to December 31, 1916

REV. GEORGE KING, January 1, 1917, to December 31, 1917

REV. JOHN L. HALL, January 1, 1918 to May 3, 1922

REV. J. A. SHARP***, May 4, 1922 to March 31, 1930

MRS. J. A. SHARP, April 1, 1930 to May 31, 1930

DR. T. J. LANCE, June 1, 1930 to May 31, 1942

J. W. SHARP, June 31, 1942 to June 4, 1947

W. L. DOWNS, June 5, 1947

*By courtesy of S. B. Tolar
Secretary of Alumni Association*

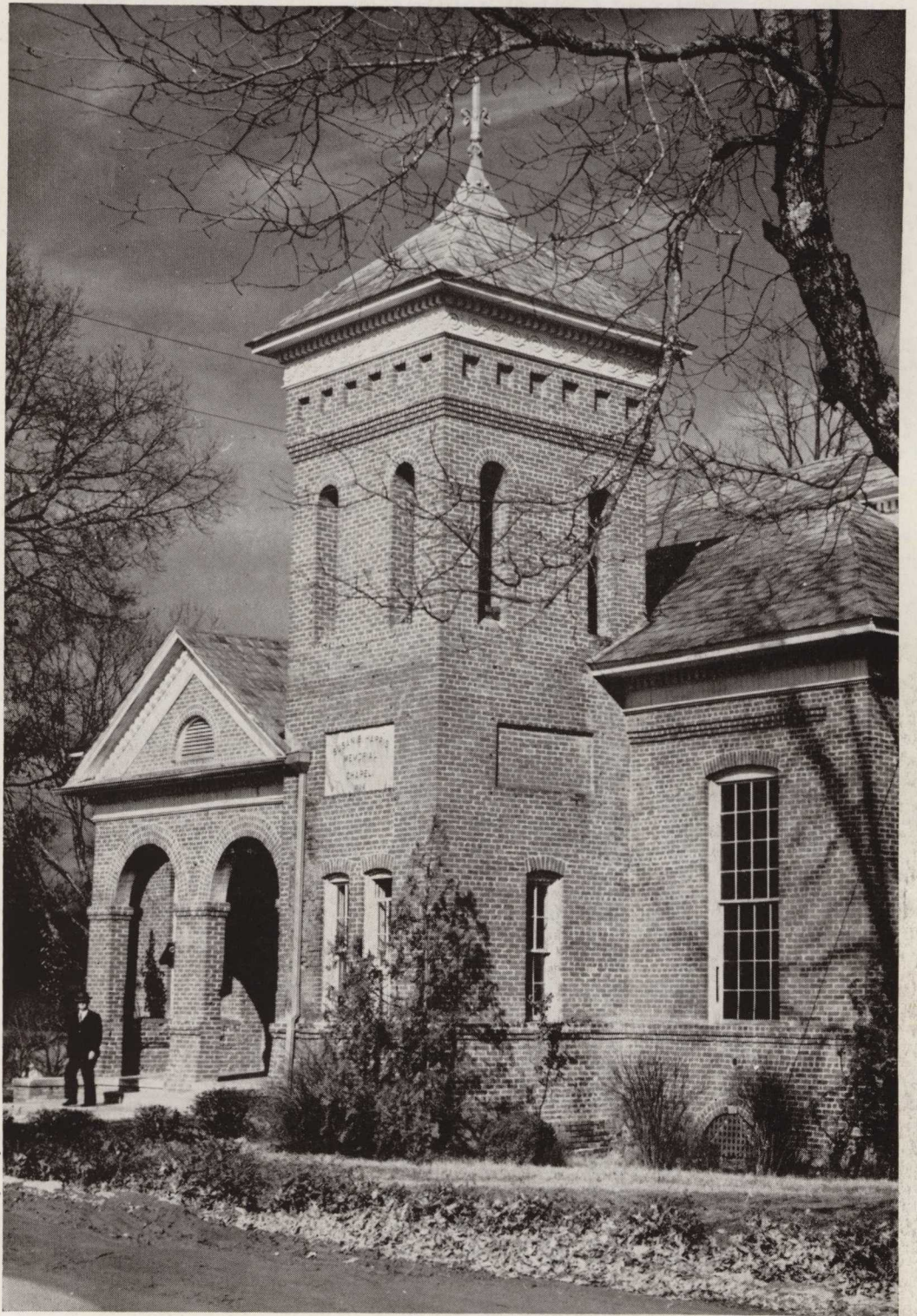
- * Date uncertain
- ** Title: Chairman of the Faculty
- *** Died in office.



*... who hold and
this college dear to*

Left: Young Harris Faculty approximately 1895. Front row, second from left: Dr. W. F. Robison. Mrs. W. F. Robison, Prof. Joe Boyd. Top row, center: Prof. W. S. Mann; (Others not known). Right: The Susan B. Harris Chapel.

*have held
their hearts...*



The Administration

Right: WALTER L. DOWNS
President

Below: SCOTT B. APPLEBY
Chairman of Board of Trustees



BOARD OF TRUSTEES

EX-OFFICIO

WALTER L. DOWNS
REV. McLOWERY ELROD
BISHOP ARTHUR MOORE

TERM EXPIRES IN 1950

BONA ALLEN
F. M. BIRD
WALLACE O. DuVALL
E. M. HUDSON
H. WINTON JENKINS
ALVA G. MAXWELL
RICHARD H. RICH
E. D. RIVERS, SR.
C. B. ROMBERG
JOHN C. STILES
DR. C. B. UPSHAW
CHARLES T. WINSHIP

TERM EXPIRES IN 1952

SCOTT B. APPLEBY
S. F. BOYKIN
JUSTICE T. S. CHANDLER
RYBURN G. CLAY
R. HOWARD DOBBS, JR.
HERBERT D. GARGES, SR.
JOHN A. MANCET
DR. FLOYD W. McRAE
A. J. STEWART
REV. J. W. VEATCH
FRED B. WILSON
STUART W. WITHAM

TERM EXPIRES IN 1954

MARSHALL L. ALLISON
DR. H. J. AULT
DR. J. C. DOVER
FRANK DUCKWORTH
J. LON DUCKWORTH
DR. HORACE T. FREEMAN
MOSE GORDON
REV. PIERCE HARRIS
REV. J. W. O. McKIBBEN
E. C. NICHOLSON
J. H. PITTARD
REV. L. M. TWIGGS



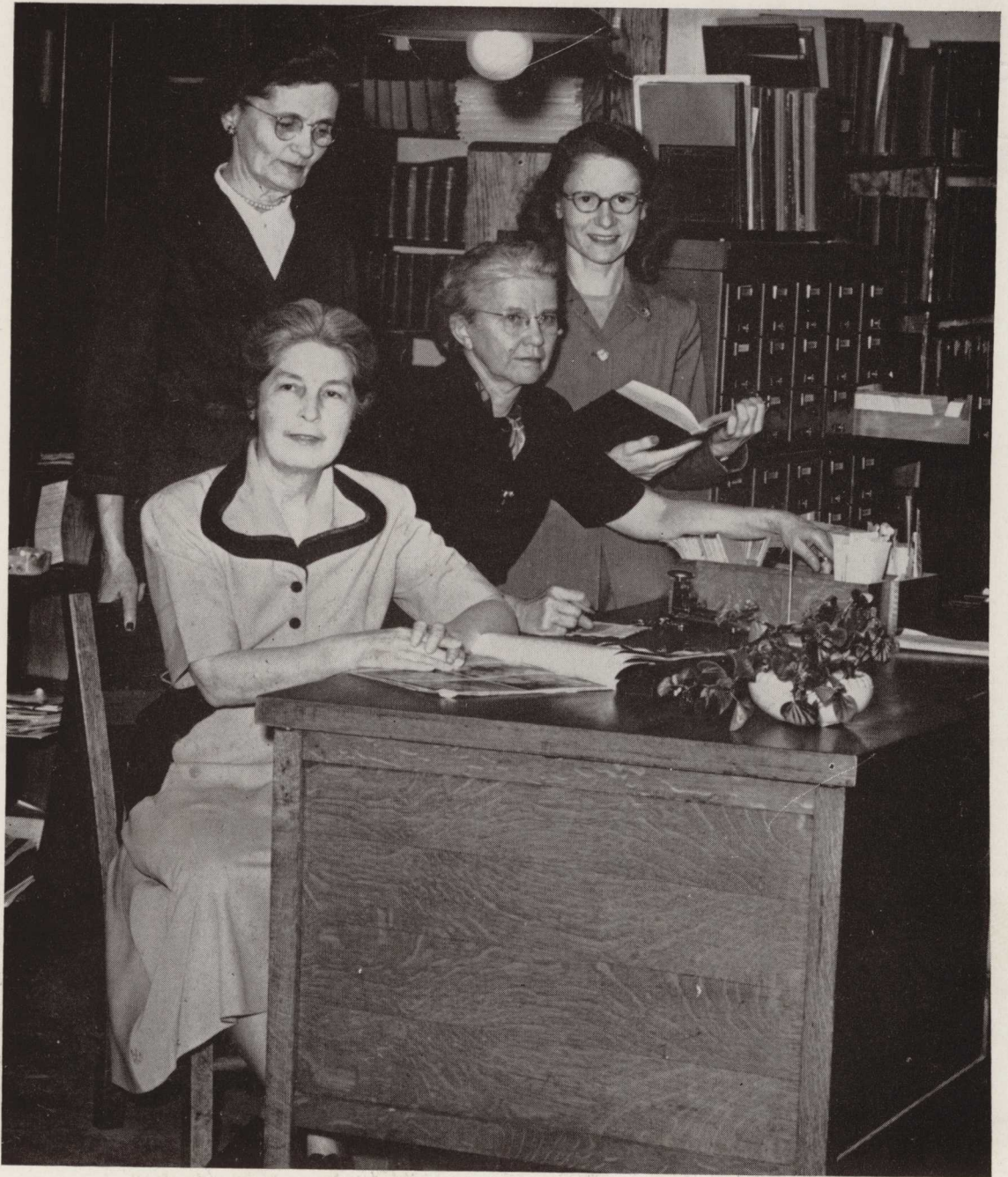
Left to right: Lawrence C. Atkins (Registrar and Mathematics), Mrs. Luke Rushton (Bursar), MacAllen Myers (Arts and Crafts, Assistant Business Manager), and Samp B. Tolar (Science).

*The
Faculty*

The Faculty

Center: W. S. Mann (Mathematics); left to right: Dr. Victor Sprague (Science), Claud Humphreys (Mathematics), Luke Rushton (Coach and History).





Left to right: Mrs. B. I. Thornton (Dean of Women, and English), Miss Cornelia Chappell (Home Economics), Mrs. S. B. Tolar (Librarian), and Miss Lura Harrison (History).

*The
Faculty*

The Faculty

Left to right: Miss Edna Herren (English), Bob Andress (Political Science), Dr. Dow Kirkpatrick (Religious Education), and Miss Beatrice Autry (Commercial Work).





Seated: Mrs. Walter Downs (Music); *left to right:* Miss Hilda McCurdy (Foreign Languages), Mrs. MacAllen Myers (English), and Mrs. Lawrence Atkins (Dining Room Hostess).

*The
Faculty*



MISS ROXANNA AUSTIN and
MISS CORNELIA LOWE
(Towns-Union Regional Library).

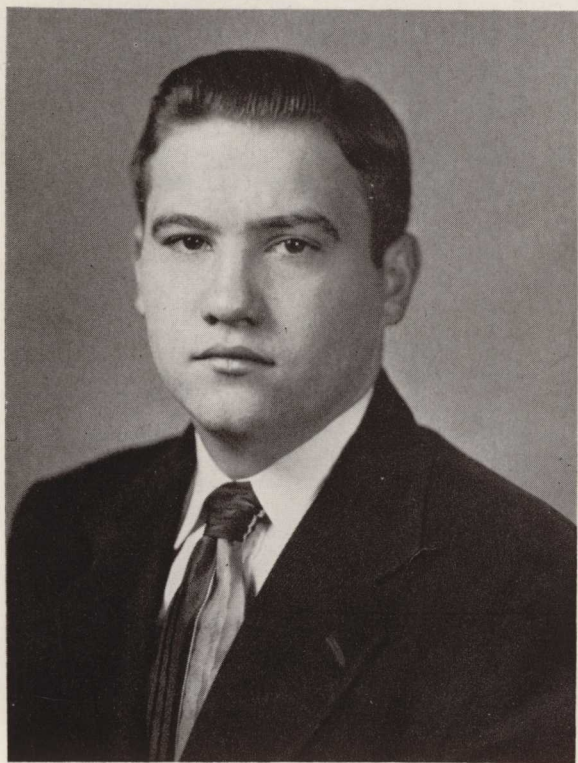
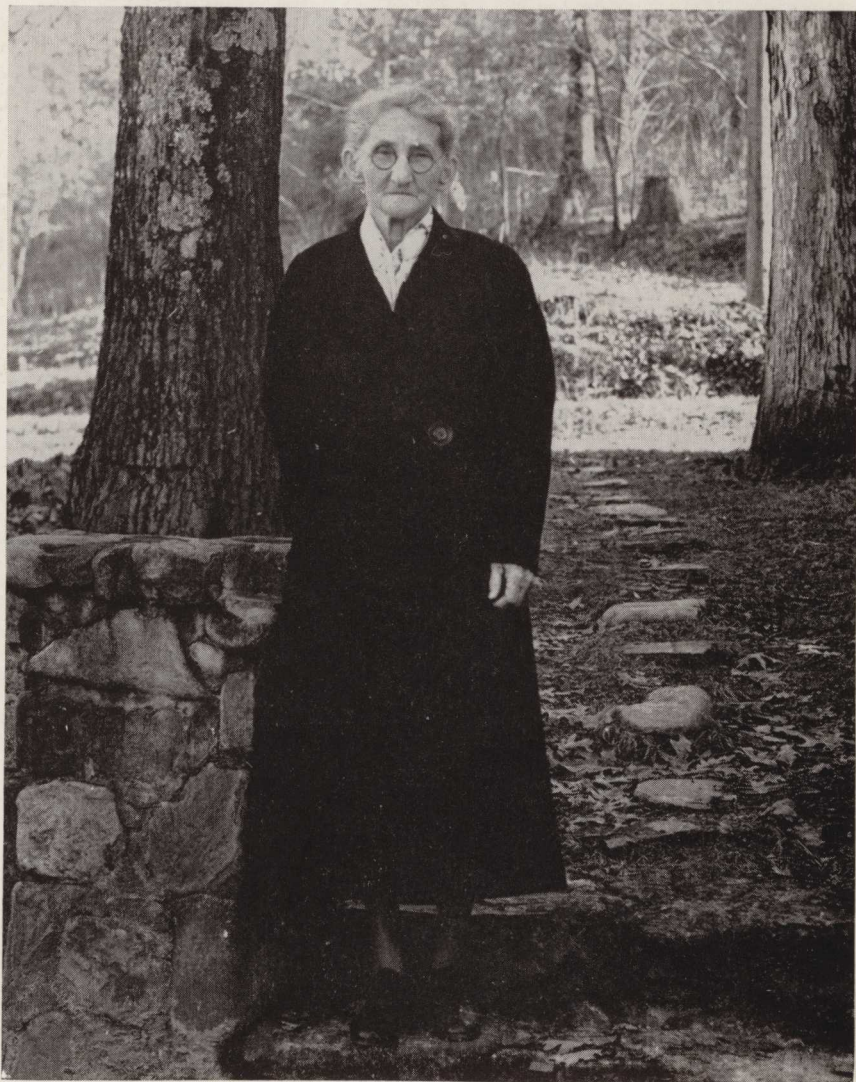
DR. W. F. TANNER, MRS. IRENE
SUTTON, MRS. DOROTHY COX and
MRS. C. W. WATERS
(Hospital Staff).



Left to right: MRS. BONNIE JEN-
KINS, MRS. MARY HUNT, MRS.
MINNIE J. CALDWELL, and MISS
GEORGIA HUTCHINS (Food Prepa-
ration Staff).



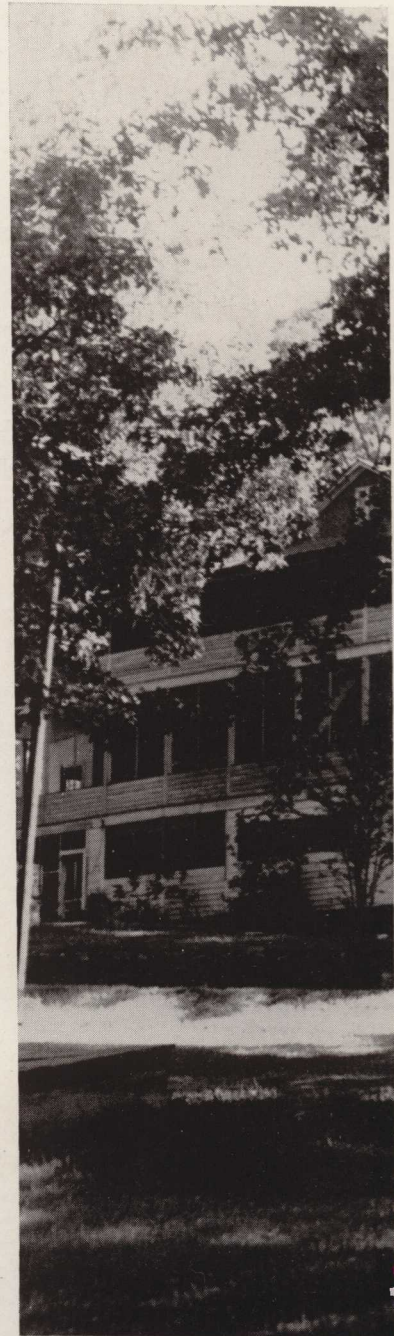
IN MEMORIAM
MRS. JOSEPH ASTOR SHARP
Died December 9, 1949



IN MEMORIAM
THOMAS ROBERT LOVERN
Died February 3, 1950

Classes

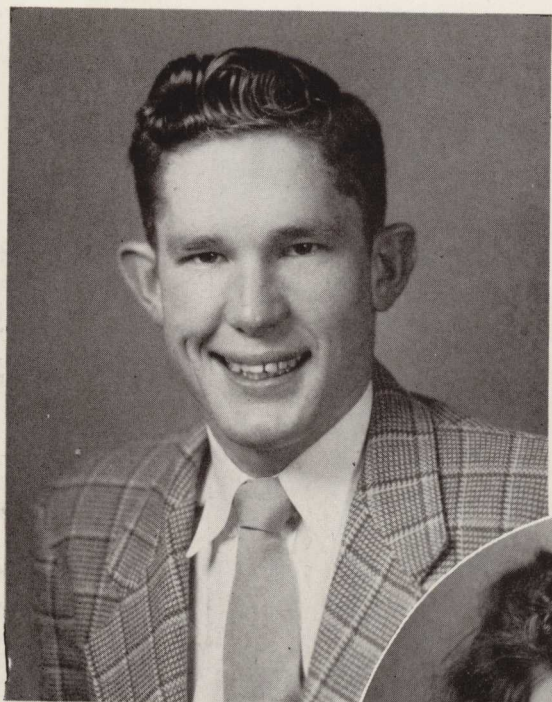
*Right: Appleby Hall.
Below: Supper time in Willis Dobbs Hall.*





*The days spent at Young Harris
have been happy ones for many.*

Officers of the 1950 Senior Class



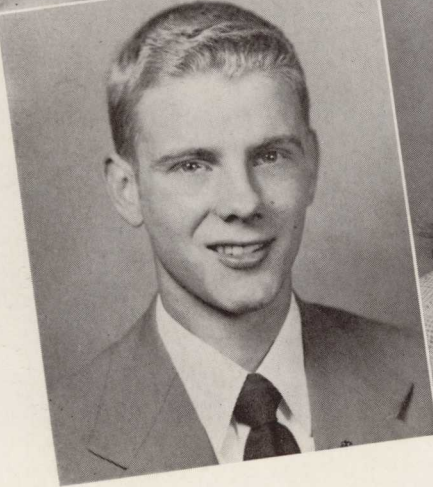
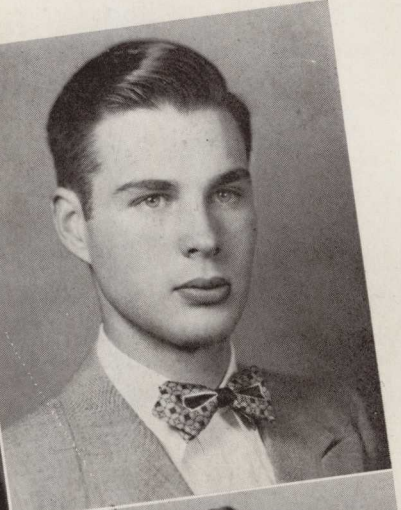
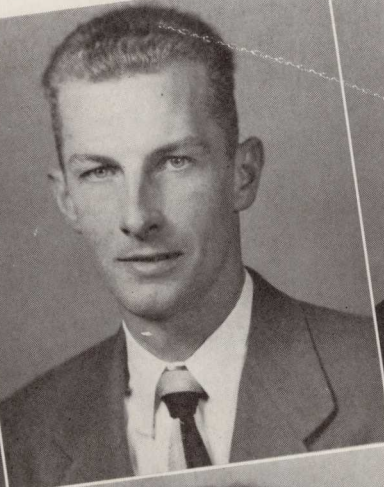
WILFORD HINELY . . . *President*
DORIS CASH . . . *Vice-President*
JANE VEAL . . . *Secretary and
Treasurer*

WILFORD HINELY
Marlow, Ga.
Ministerial Conference, Bishop;
M. S. F. Council, President.

DORIS CASH
Phi Delta
Mountville, Ga.
Phi Delta, President; Dorcas;
Student Council.

JANE VEAL
Susan B.
Sandersville, Ga.
Alpha Psi, Chaplain; Student
Council, Secretary; Ministerial
Conference, Secretary-Treasurer;
Susan B., Secretary, Critic; Young
Ladies Circle.

Seniors



GLORIA ANDERSON
Phi Delta
Glenwood, Ga.

Dorcas Club, President; International Relations Club, Vice-President.

"CHUCK" BEAVER
Phi Chi
Ringgold, Ga.

Varsity basketball.

JOHN ARROWOOD
Phi Chi
Blairsville, Ga.

Phi Chi, Treasurer; Veterans' Club, President, Treasurer; Spat Club, Treasurer; Student Council.

WANDA BERRONG
Phi Delta
Hiawassee, Ga.

MARY FRANCES AXLEY
Susan B.
Murphy, N. C.

Young Ladies Circle, Treasurer; M. S. F., Publicity; Schubert Music Club, President; ENOTAH ECHOES, Art Editor; Susan B., Stage Director; ENOTAH Staff.

TERRE BLAIR
Susan B.
Cartersville, Ga.

Student Council, Secretary; Susan B., Cheerleader, Treasurer; Young Ladies Circle, Vice-President; ENOTAH, Art Editor; Ministerial Conference; Counsellor, Jr. Intermediate Fellowship; Appleby House Council, Secretary and Treasurer.

TRAVIS BARNES
Y. H. D. S.
Augusta, Ga.

Student Council; Ministerial Conference.

BILL BRYSON
Phi Chi

Young Harris, Ga.
Veterans' Club, President; Spat Club, Secretary.

Seniors



MARY PARKS BUGG

Susan B.
Rentz, Ga.

Alpha Psi; ENOTAH ECHOES;
I. R. C.; Susan B., Recording
Secretary.

RALPH COKER

Phi Chi

Gainesville, Ga.

Spat Club, Vice-President; ENO-
TAH, Business Manager; ENOTAH
ECHOES; Basketball team; Stu-
dent Council.

TOMMIE BURCH
Hayesville, N. C.

Alpha Psi

JAMES CURTIS

Phi Chi

Hayesville, N. C.

NANCY CAROLINE CARTER

Susan B.

Fort Devens, Mass.

Susan B., Reporter, President,
Basketball; ENOTAH, Editor;
Dorcas, Chaplain, Reporter;
Schubert Music Club, Treasurer;
Alpha Psi; Commercial Club;
Ministerial Conference; M. S. F.
Council; Student Council; Presi-
dent Appleby House Council;
Choir; Young Ladies Circle;
ENOTAH ECHOES, Feature Editor.

ROUSE DAVIS

Blairsville, Ga.

WILLIAM FERRELL CHILDRES

Y. H. D. S.

Butler, Ga.

Y. H. D. S., Reporter, Treas-
urer; M. S. F. Council, Treas-
urer; Ministerial Conference;
ENOTAH ECHOES, News Editor;
ENOTAH Staff.

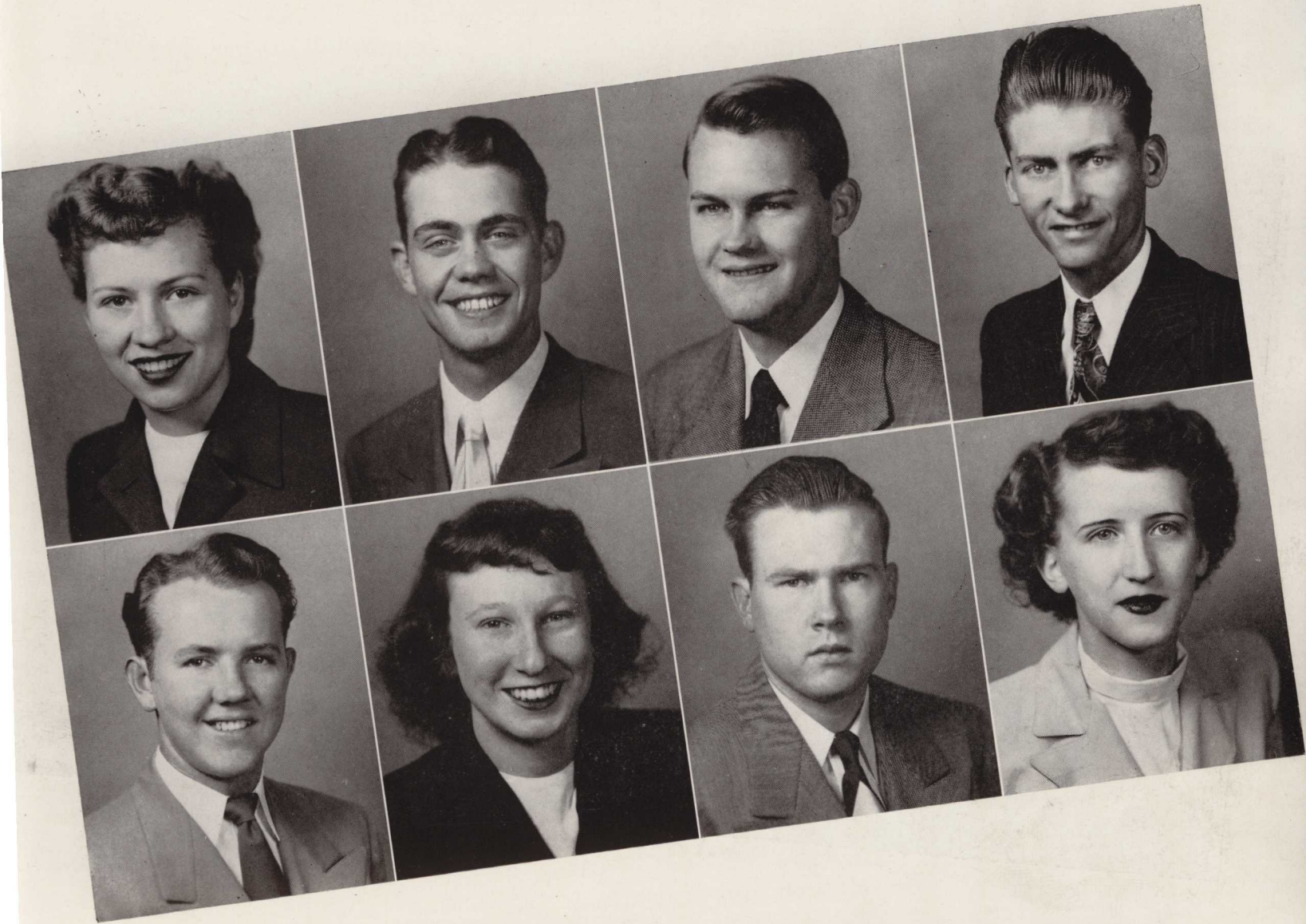
EUGENE DUNN

Y. H. D. S.

Athens, Ga.

Y. H. D. S., Chaplain; I. R. C.,
President; M. S. F.; Ministerial
Conference; Student Council.

Seniors



SARA SUE DOTSON
Phi Delta
Clayton, Ga.

Phi Delta, Vice-President, President, Cheerleader; ENOTAH ECHOES; I. R. C., Secretary; "A" Club; ENOTAH; Student Council; Varsity Cheerleader.

NEIL HAMBY
Blairsville, Ga.

BILL FOX
Y. H. D. S.
Blairsville, Ga.

Choir; Ministerial Conference; I. R. C., President; Y. H. D. S., Vice-President.

CECIL ANTOINETTE HARRIS
Phi Delta
Griffin, Ga.

Phi Delta, Chaplain; Dorcas, Vice-President; Commercial Club, President; I. R. C.

JOHN GREGORY
Phi Chi
Dalton, Ga.

Phi Chi, Secretary; Commercial Club.

THOMAS LANCE HARRIS
Y. H. D. S.
Wrightsville, Ga.
Veterans' Club; I. R. C.

ALBERT EDWARD HALL
Young Harris, Ga.

SARAH KING
Susan B.
Murphy, N. C.

Commercial Club, Secretary; Schubert Music Club, Secretary; Reporter; Young Ladies Circle; Student Council; ENOTAH ECHOES; I. R. C., Secretary; "A" Club; ENOTAH; Student Council; Varsity Cheerleader.

Seniors



BOB KERR
Y. H. D. S.
College Park, Ga.

Student Council; Ministerial Conference; Varsity Basketball, "A" Club; Y. H. D. S., Football.

FRANCES KNIGHT
Phi Delta

Flowery Branch, Ga.
Choir; "A" Club; Phi Delta, Basketball, Softball; Schubert Music Club.

"LIZ" LEDFORD
Susan B.
Nicholls, Ga.

Young Ladies Circle, President; ENOTAH ECHOES; Ministerial Conference; Choir.

OLGA LEON
Phi Delta

Santa Clara, Cuba
Dorcas; Young Ladies Circle; I. R. C.; Ministerial Conference.

LOU ELLEN MCDADE
Phi Delta
Eatonton, Ga.

Commercial Club, Treasurer; Student Council; Young Ladies Circle; ENOTAH ECHOES; Secretary of Freshman Class; "A" Club, Secretary; ENOTAH; Phi Delta, Cheerleader; I. R. C., Secretary.

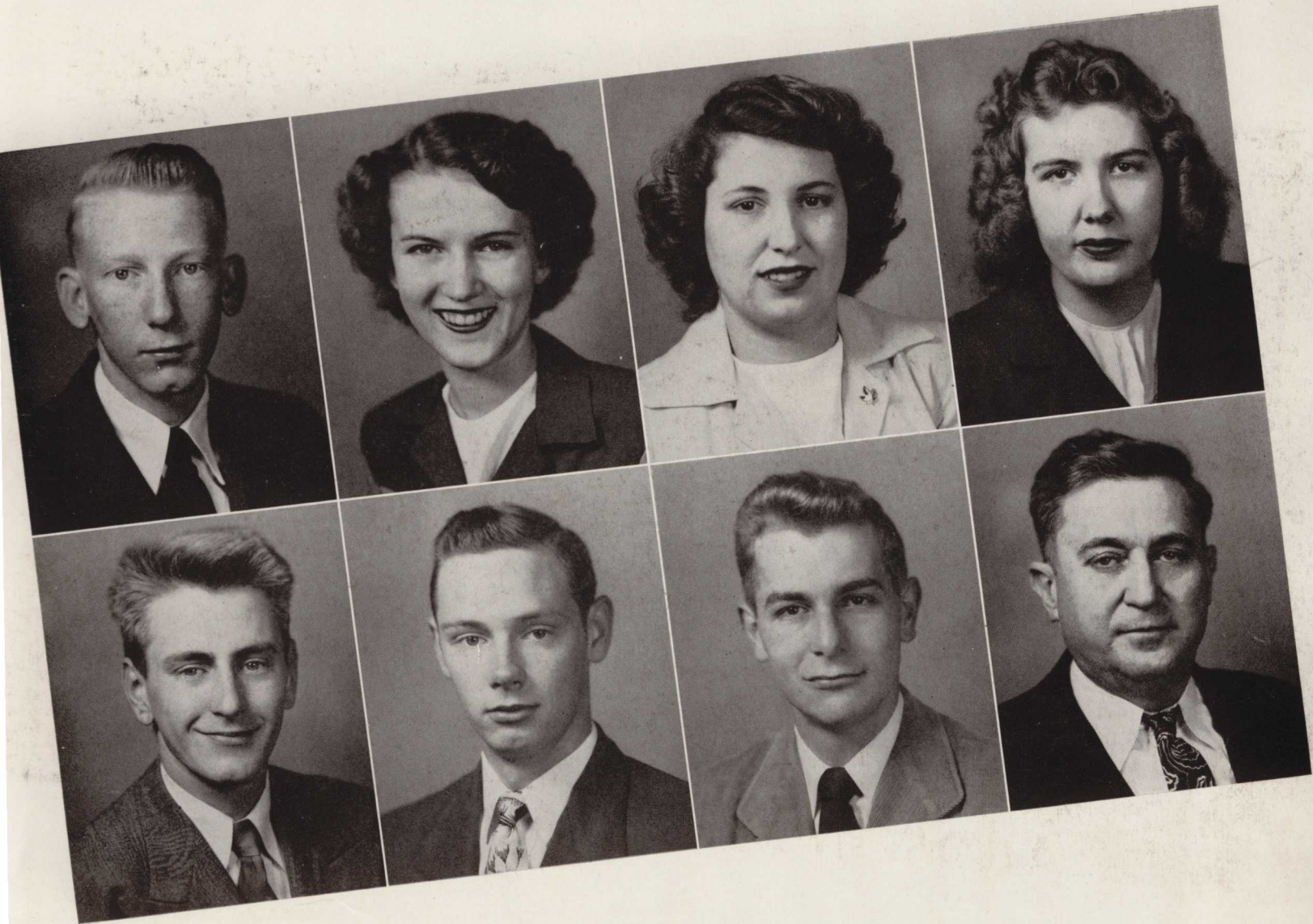
BETTY McMILLIN
Phi Delta

Milledgeville, Ga.
Commercial Club; I. R. C.

ROBERTA MANEY
Susan B.
Hiawassee, Ga.
Alpha Psi.

PANSY MEASE
Hayesville, N. C.
Alpha Psi.

Seniors



MELVIN MCKEEHAN
Y. H. D. S.
Rocky Face, Ga.
ENOTAH.

HOYT ROBINSON
Phi Chi
Gainesville, Ga.
Varsity Basketball; "A" Club;
Spat Club; Commercial Club.

KANSIE LEE NEWTON
Susan B.
Dawsonville, Ga.
Alpha Psi; Young Ladies Circle;
ENOTAH ECHOES; *Susan B.*,
Cheerleader.

GALE ROGERS
Y. H. D. S.
Mineral Bluff, Ga.

DOROTHY LEE PALMER
Susan B.
Murphy, N. C.
Schubert Music Club; Alpha
Psi; Young Ladies Circle; I. R. C.

DOUGLAS REID SASSER
Y. H. D. S.
Millen, Ga.
Y. H. D. S., Critic, President;
Student Council, President; ENO-
TAH ECHOES, Editor; ENOTAH
Staff; Ministerial Conference;
I. R. C.; Spat Club.

BLANCHE PANTER
Susan B.
Culberson, N. C.

F.L. SHERWOOD
Y. H. D. S.
McDonough, Ga.

Seniors



GERALDINE SPIVA
Phi Delta
 Blairsville, Ga.
 Phi Delta, Secretary; Dorcas,
 Treasurer.

JACK WELDON
Y. H. D. S.
 Monroe, Ga.
 Commercial Club; ENOTAH
 ECHOES; ENOTAH.

GERALD WILLIAMS
Y. H. D. S.
 Lake City, Fla.
 Young Harris, President; Foot-
 ball Captain; I. R. C., President,
 Parliamentarian; Ministerial Con-
 ference, Parliamentarian, Dis-
 trict Superintendent; M. S. F.
 Council, Vice-President.

BETTY JEAN STYLES
Susan B.
 Juno, Georgia
 Alpha Psi, Vice-President; ENO-
 TAH ECHOES; M. S. F. Council,
 Secretary; Young Ladies Circle;
 Student Council, Vice-President.

EVELYN WESTBROOK
Susan B.
 Gainesville, Ga.
 Susan B., Treasurer, Basketball
 Captain; M. S. F. Council;
 Young Ladies Circle.

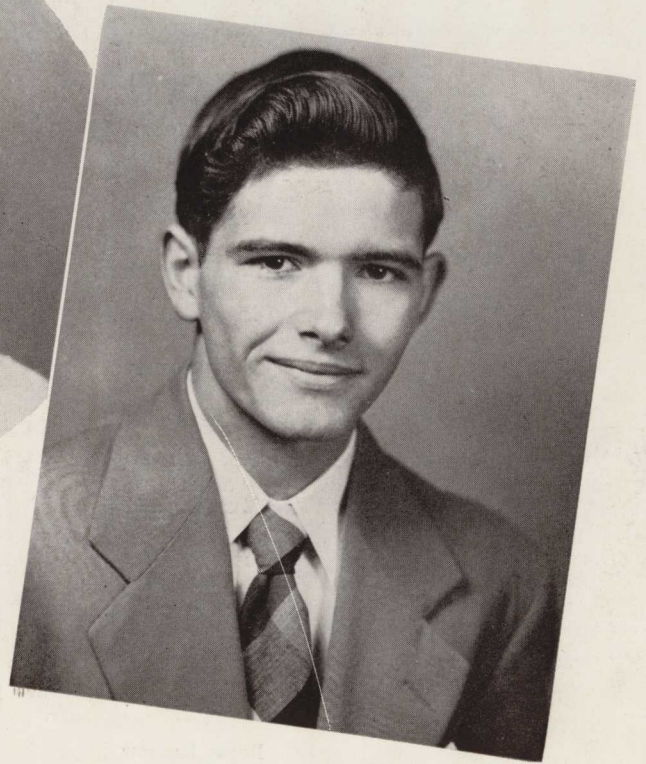
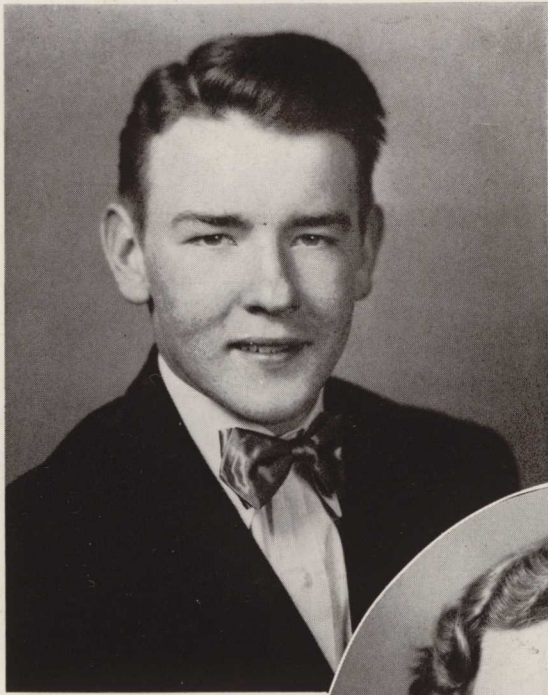
JACK WILLOUGHBY
Y. H. D. S.
 Union Point, Ga.
 I. R. C.; Choir; ENOTAH
 ECHOES; Y. H. D. S., Vice-Presi-
 dent, Champion Debater, Play
 Director; ENOTAH; Ministerial
 Conference; M. S. F. Council;
 Student Council; Georgia M. S.
 M. President; Freshman Class
 President.

FRANK SUMMEROUR
Y. H. D. S.
 Dawsonville, Ga.
 Y. H. D. S., Secretary; ENOTAH
 ECHOES, Editor; Student Coun-
 cil; Men's Choir; I. R. C.

LETTIE LEE WESTBROOK
Susan B.
 Gainesville, Ga.
 Alpha Psi, Secretary-Treasurer;
 Young Ladies Circle; Student
 Council; Susan B., Cheerleader;
 ENOTAH ECHOES; ENOTAH Staff;
 Commercial Club.

THEODORE WOOD
Y. H. D. S.
 Flowery Branch, Ga.
 Y. H. D. S., Sergeant-at-Arms;
 Spat; Choir; Student Council.

Officers of the
1950
Freshman Class

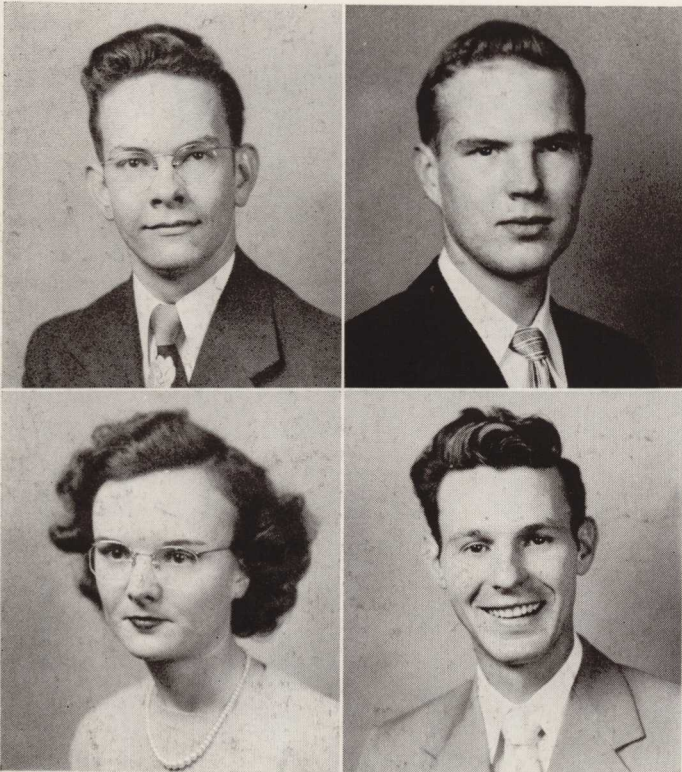


BOB GARY
Y. H. D. S.
Atlanta, Ga.
President of Freshman Class.

MILDRED SPEIR
Phi Delta
Dawson, Ga.
Vice-President of Freshman Class.

ROBERT RIGSBY
Y. H. D. S.
Unadilla, Ga.
Secretary-Treasurer of Freshman
Class.

The Freshman



LAMAR ADAIR
Y. H. D. S.
Decatur, Ga.

PAUL W. AGNEW, JR.
Phi Chi
Atlanta, Ga.

BETTY LOU ANDREWS
Susan B.
Deepstep, Ga.

CHESTER AUSTIN
Phi Chi
Ringgold, Ga.

MARTHA AXLEY
Susan B.
Murphy, N. C.

ROBERT D. BARLOW
Y. H. D. S.
Cairo, Ga.

RICHARD BARNHILL
Y. H. D. S.
Glenwood, Ga.

BOBBY BARROW
Y. H. D. S.
West Point, Ga.

MILDRED BENTLEY
Tallapoosa, Ga.

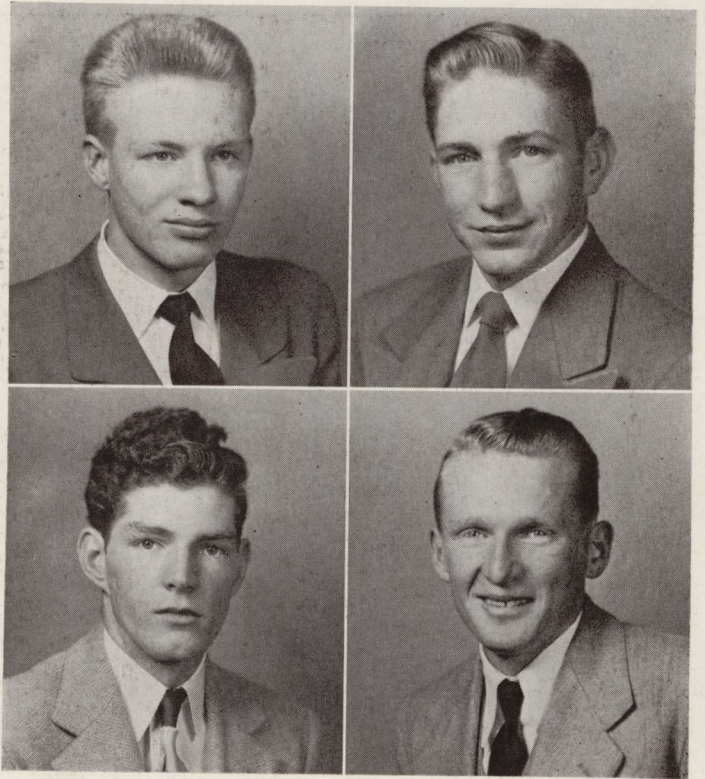
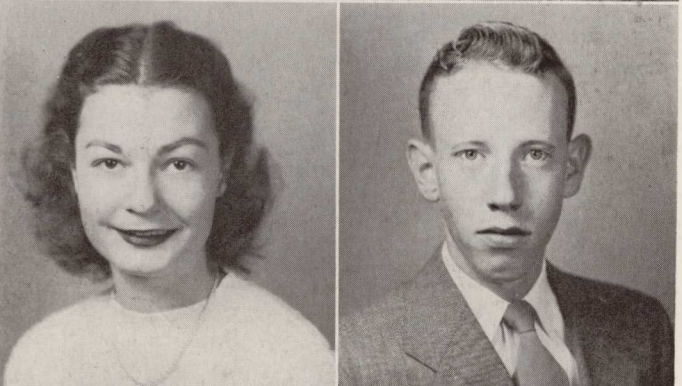
LOU BRYSON
Susan B.
Dillard, Ga.

DALE CHEELY
Williston, Fla.

MASTON O. COOPER
Y. H. D. S.
Faceville, Ga.



Class



DAVID COWART
Y. H. D. S.
Thomaston, Ga.

BRYAN CRAFT
Y. H. D. S.
Decatur, Ga.

CARROLL CROSBY
Waycross, Ga.

WILLIAM T. CRUMLEY
Blairsville, Ga.

MARY NELL DAVIS
Susan B.
Akron, Ohio

LELAND C. DENMAN
Y. H. D. S.
Greenville, Tenn.

GERVACE R. ENGLISH
Clayton, Ga.

JEANNINE ENGLISH
Hephzibah, Ga.

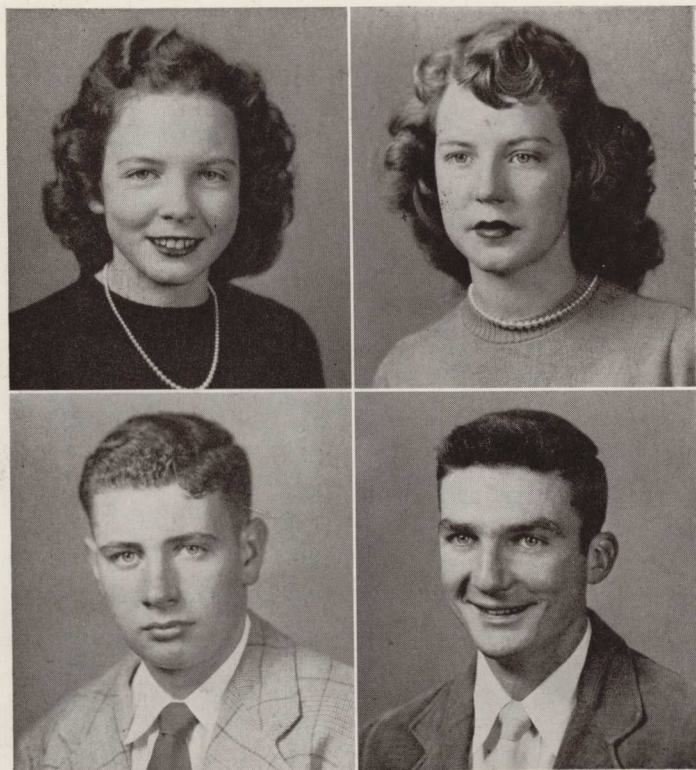
JOHNNIE SUE FREEMAN
Susan B.
Commerce, Ga.

JOHNNIE GIBSON
Y. H. D. S.
Ranger, N. C.

CARMEN GUTIERREZ
Susan B.
Sagua, Cuba

JAMES HELTON
Y. H. D. S.
Culberson, N. C.

The Freshman



ANNE HEMPHILL
Susan B.
Toccoa, Ga.

BETTY JEAN HOOD
Blairville, Ga.

JERRY HUNT
Phi Chi
Atlanta, Ga.

JAMES HUTTO
Phi Chi
Fort Valley, Ga.

JAMES ISRAEL
Y. H. D. S.
Byron, Ga.

EDGAR JENKINS
Phi Chi
Blairville, Ga.

BETTY JEAN JOHNSON
Boneville, Ga.

DICK KIKER
Phi Chi
Atlanta, Ga.

MARY KNIGHT
Phi Delta
Flowery Branch, Ga.

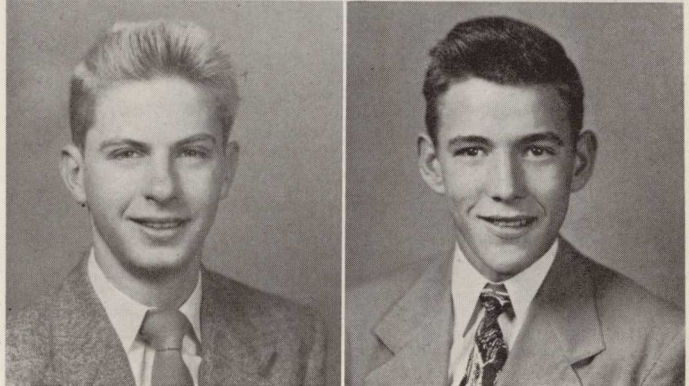
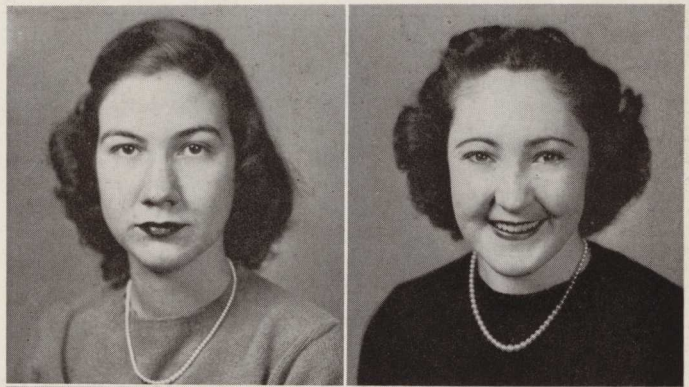
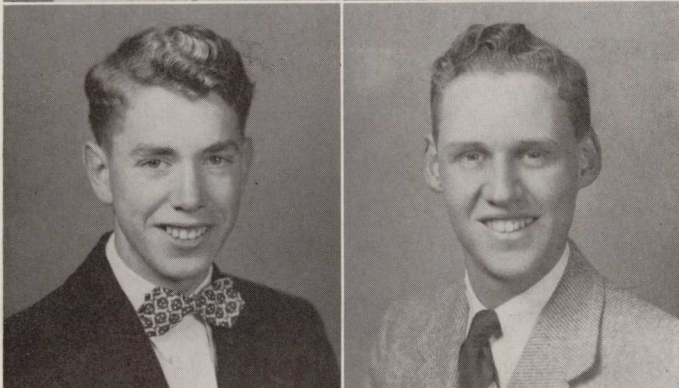
BETTY LANGFORD
Susan B.
Commerce, Ga.

BOBBY LOVERN
Y. H. D. S.
Cedartown, Ga.

MARTHA LUGIOYO
Phi Delta
Santa Clara, Cuba



Class



JOYCE LYNCH
Phi Delta
LaGrange, Ga.

BARBARA McDARRIS
Phi Delta
Hemp, Ga.

ZELL MILLER
Phi Chi
Young Harris, Ga.

KENNETH MILLICAN
Y. H. D. S.
Summerville, Ga.

MARY MORCOCK
Susan B.
Avondale Estates, Ga.

JEWEL NELSON
Phi Delta
Devereux, Ga.

FELIX PALMER
Y. H. D. S.
Murphy, N. C.

GRADY PARRISH
Y. H. D. S.
Columbus, Ga.

MARY HELEN PHILLIPS
Susan B.
McCaysville, Ga.

MARY PRINCE
Susan B.
Morganton, Ga.

MARTHA PRINCE
Susan B.
Morganton, Ga.

MARVIN PULLIAM
Y. H. D. S.
Elberton, Ga.

The Freshman



EUNETTA PURVIS
Susan B.
Tallapoosa, Ga.

GENE ROBERTS
Y. H. D. S.
Lake City, Fla.

THELMA ROBERTS
Susan B.
Buford, Ga.

CARL RICHARD ROSS
Phi Chi
Ringgold, Ga.

BOB SHORT
Phi Chi
Clayton, Ga.

LILLIAN STEWART
Phi Delta
Mineral Bluff, Ga.

JEANETTE TATUM
Susan B.
White, Ga.

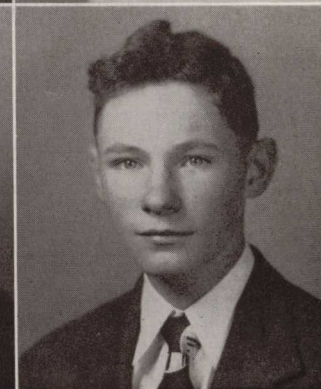
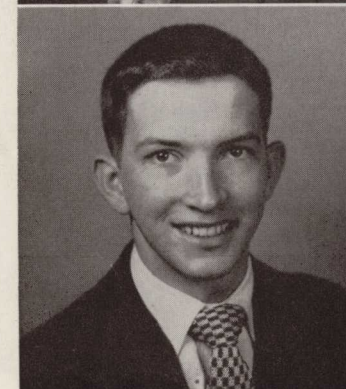
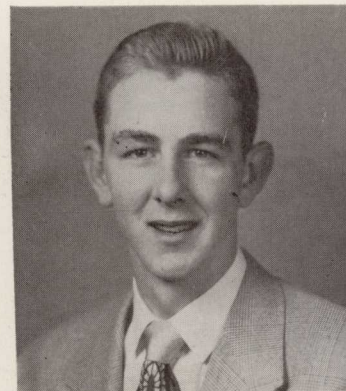
MRS. JEAN TAYLOR
Hiawassee, Ga.

JAMES THOMPSON
Culberson, N. C.

HAZEL TOLES
Susan B.
Menlo, Ga.

BILL VEATCH
Phi Chi
Doraville, Ga.

JAMES E. WEEKS, JR.
Y. H. D. S.
Ellijay, Ga.

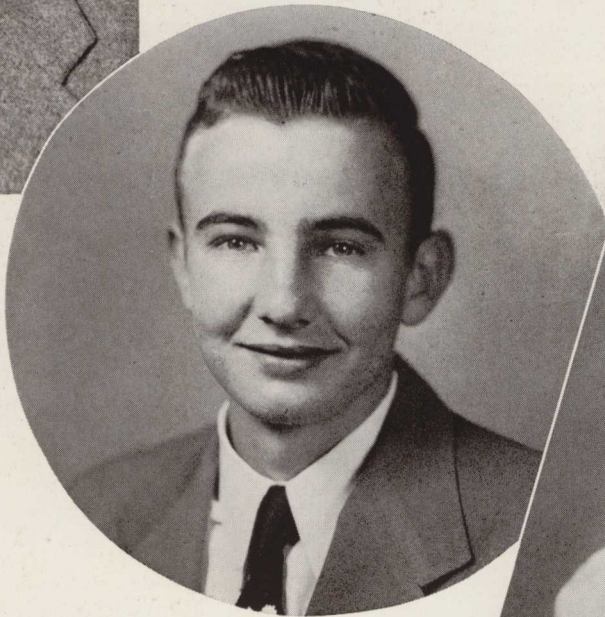


Officers of 1950 Academy



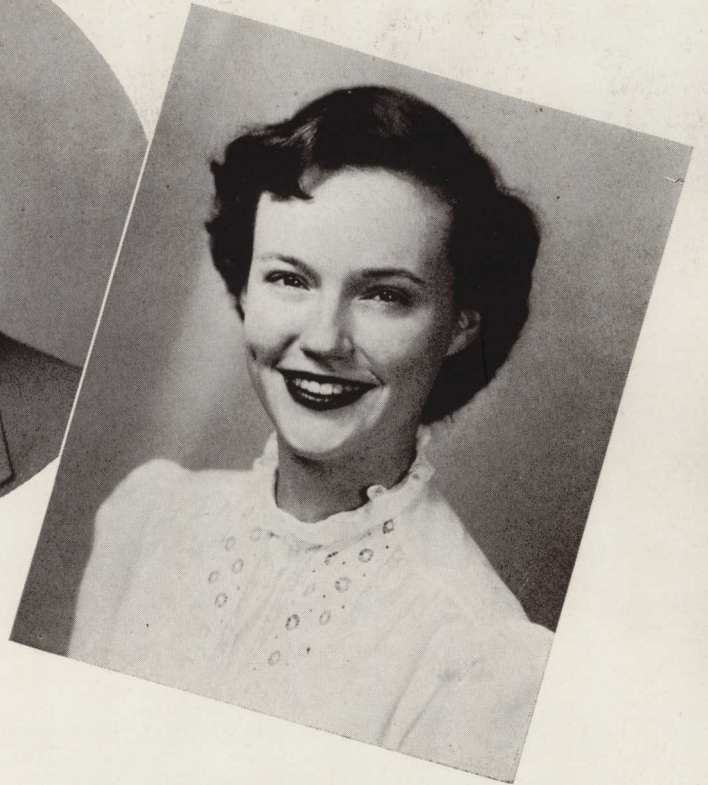
CHARLES FRANCIS
Phi Chi
Atlanta, Ga.

Phi Chi, Vice-President, Sentinel,
Captain Football Team, Softball,
Basketball; Spat Club; "A" Club;
Varsity Basketball Manager.



EARL NUNN
Y. H. D. S.
Bostwick, Ga.

Y. H. D. S., Solicitor General;
Peel Hall Council.

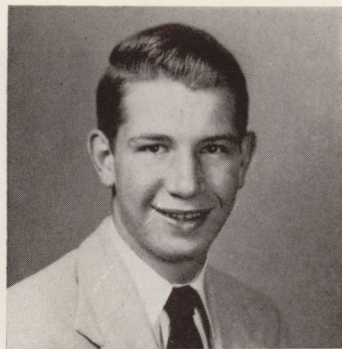


JUYNE HARRIS
Susan B.
Atlanta, Ga.

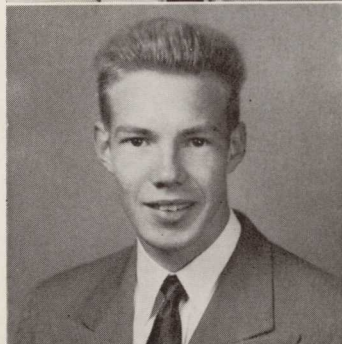
Susan B., Vice-President, Treas-
urer, Cheerleader; Alpha Psi;
ENOTAH, Secretary, Promotions
Manager; ENOTAH ECHOES;
I. R. C.; Commercial Club; Young
Ladies Circle; Varsity Cheer-
leader; Student Council.

CHARLES FRANCIS . . . *President*
EARL NUNN . . . *Vice-President*
JUYNE HARRIS . . . *Secretary-
Treasurer*

The Academy



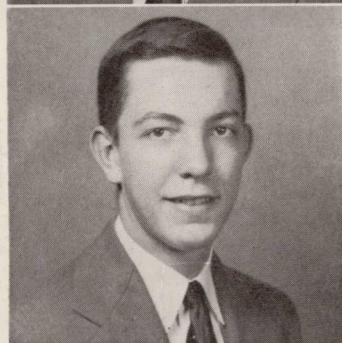
HAMPTON G. DASHER
Y. H. D. S.
Lexington, Ky.
Varsity Basketball; ENOTAH
ECHOES; Y. H. D. S., Football.



PEDRO DE LA TORRE
Santa Clara, Cuba

BARBARA LEDFORD
Susan B.
Atlanta, Ga.

ELOUISE LOTT
Susan B.
Broxton, Ga.



RAUL LUGIOYO
Y. H. D. S.
Santa Clara, Cuba
Varsity Basketball Manager
"A" Club.

BARBARA NOLAND
Phi Delta
Decatur, Ga.
ENOTAH; Varsity Basketball;
Cheerleader; Commercial Club;
Schubert Music Club; ENOTAH
ECHOES; "A" Club.

WILEY NOLAND
Phi Chi
Ben Hill, Ga.
Spat; Veterans' Club, Vice-
President.

ANN ROSS
Young Harris, Ga.

ROBERT E. SMITH
Y. H. D. S.
Blue Ridge, Ga.

JERE SUMMERS
Y. H. D. S.
Macon, Ga.
Y. H. D. S., Treasurer, Football;
ENOTAH ECHOES.

JOHN G. USRY
Y. H. D. S.
Thomson, Ga.
Camera Club.

Young Harris students picking up chips for the stoves in their rooms. *Left to right:* Montine Dunegan, later Mrs. J. S. Niblack, the grandmother of Careyteen Niblack; Virginia White, later Mrs. Willis Dobbs; Mabel Hadden; and Annie Walker. Miss Dunegan and Miss White were graduates of the class of 1900. This picture is located approximately at the site of the present water fountain. It is looking in the direction of the heating plant.

By courtesy of S. B. Tolar.



THE TEMPERANCE
SOCIETY
(From 1920 EXCELSIOR)

THE BOY SCOUTS
(From 1920 EXCELSIOR)



Basketball

Right: 1950 Cheerleaders: Barbara Noland (top); Joyce Lynch, Sara Sue Dotson (center); Juyne Harris (seated).

Below: From the 1920 EXCELSIOR



*The spirit of
and good sportsman-
prevailed.*

~ ~

*cooperation
ship has*

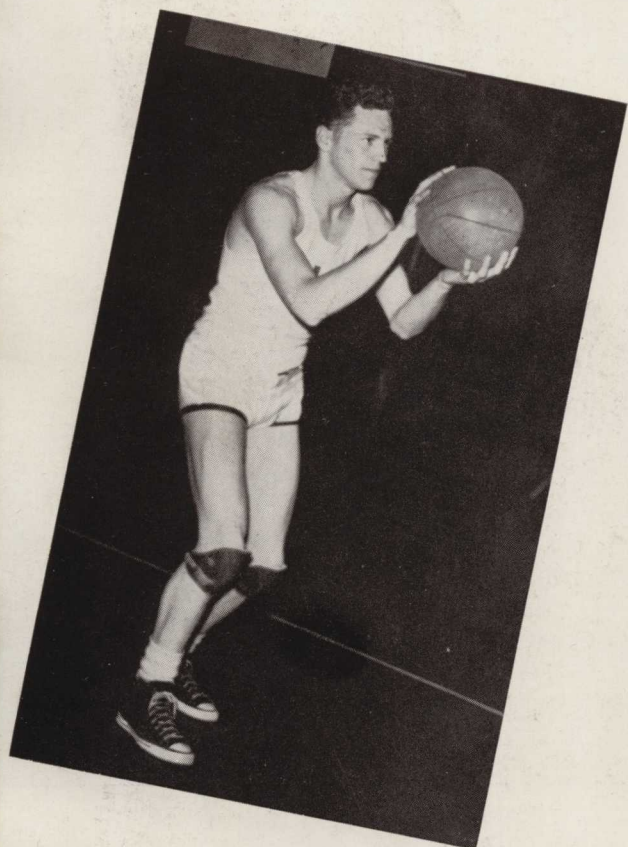




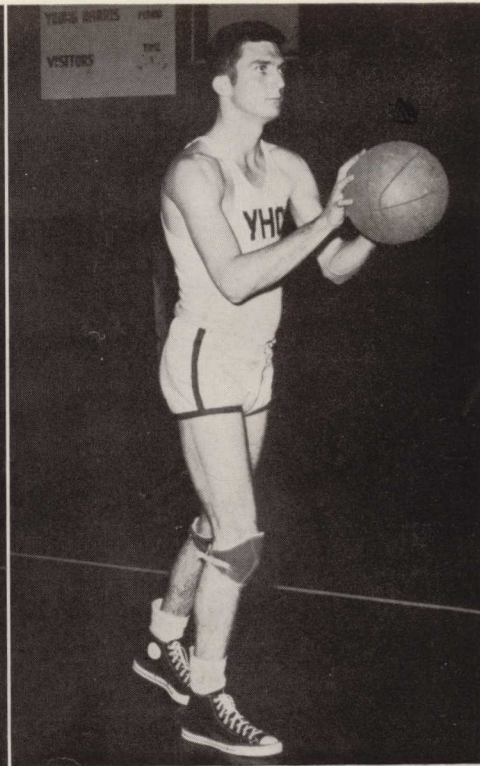
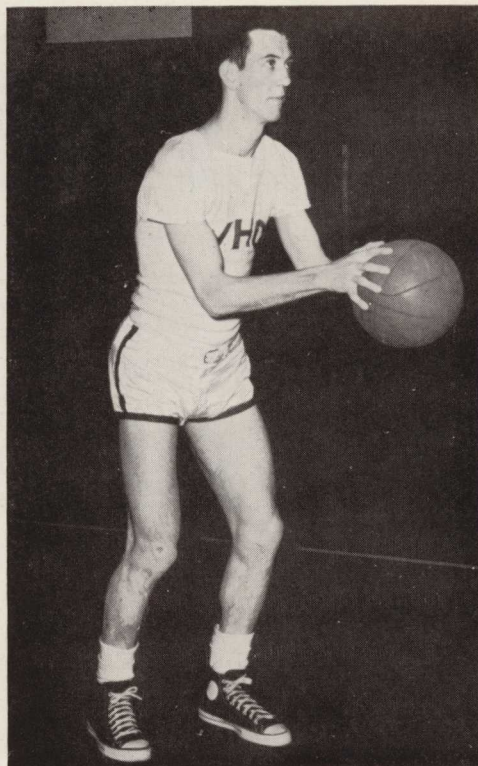
First row: Charlie Francis (Manager), "Red" Coker, Bill Bryson, James Hutto, Bob Kerr, George Dasher, Raul Lugiayo (Manager).
 Second row: Captain Wesley Morrison, Bob Short, James Teal, "Red" Ross, Hoyt Robinson. Third row: Jerry Hunt, Chester Austin,
 Coach Luke Rushton, Zell Miller, and Chuck Beaver.

Varsity

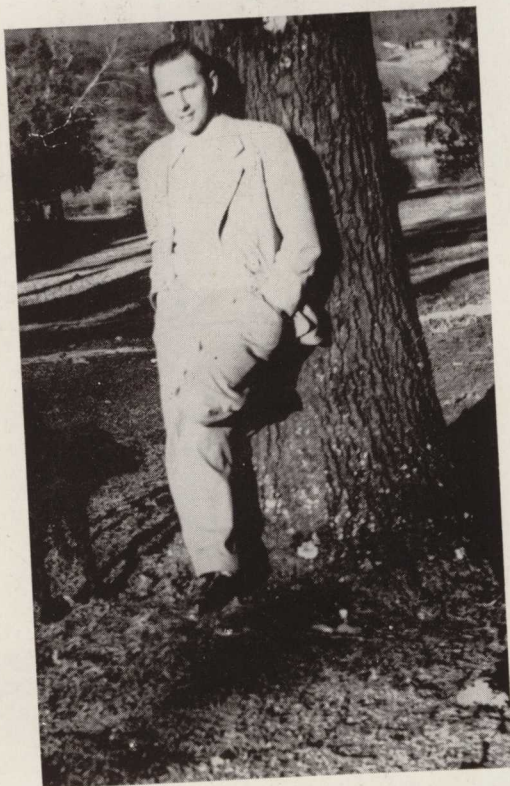
Basketball Team



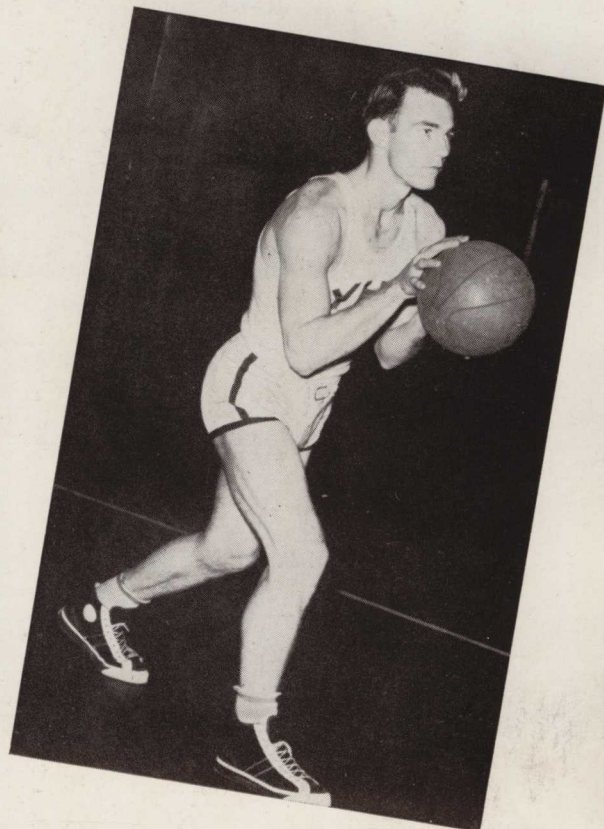
Left to right: Bill Bryson, Center;
 George Dasher, Guard; James Hutto,
 Center.



Young Harris' Score	Opponents' Score
77	Gainesville Mills 28
84	North Georgia Vocational School 47
77	Gainesville Mills 32
78	Martin College 45
61	Martin College 41
59	McEver Packing Co. 65
72	Mars Hills 64
73	Toccoa Falls Institute 51
58	New Holland 57
51	Brewton Parker 41
64	Toccoa Falls Institute 34
71	McEver Packing Co. 45
65	Southern Tech 39
46	Chicopee 55
52	Hiwassee College 47
67	G. M. A. 34
68	Southern Tech 42
52	Mars Hill 44
48	Hiwassee College 63
40	Martin College 57
39	Georgia Military College 38
67	Abraham Baldwin College 69
34	Brewton Parker 69
44	New Holland 41



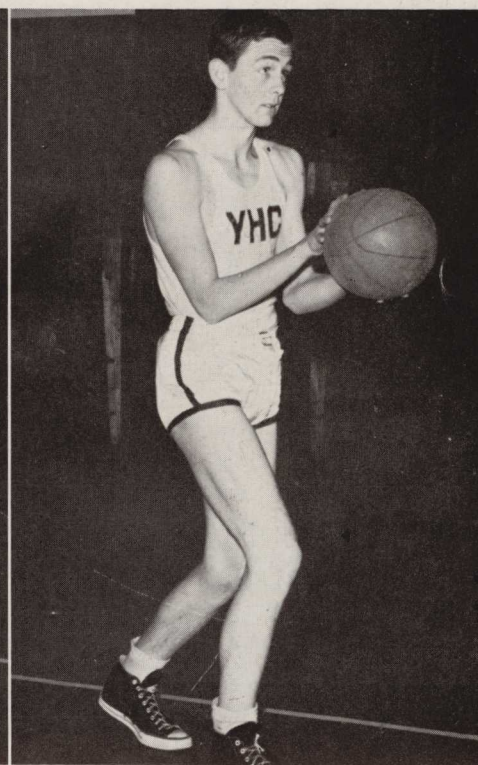
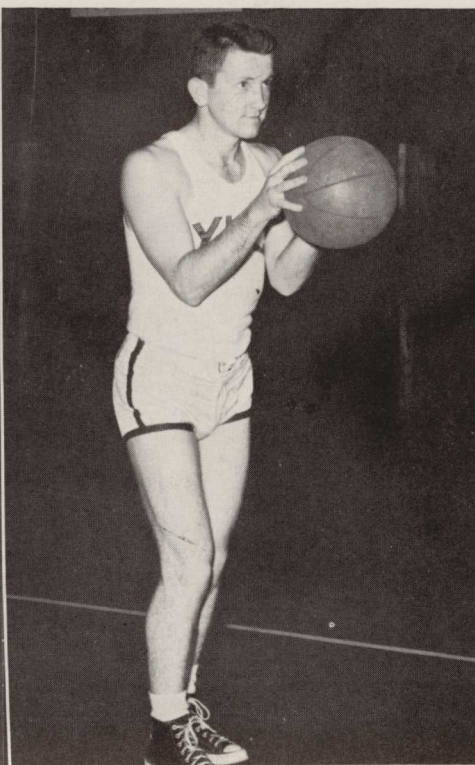
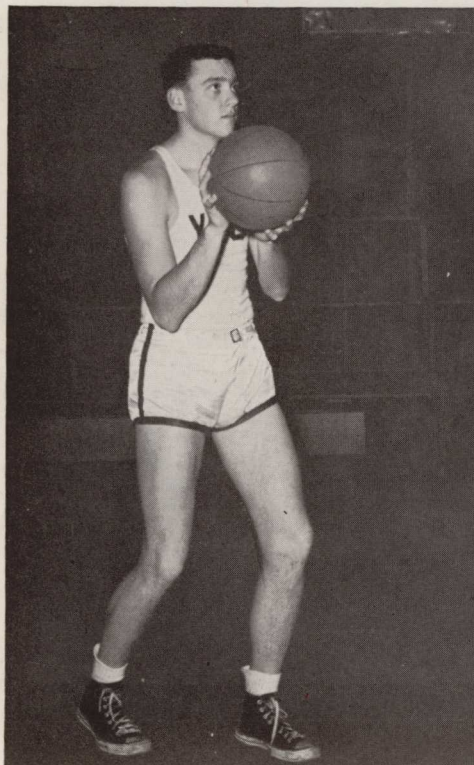
Left: Coach Luke Rushton. Below: Capt. in Wesley Morrison, Guard. Bottom: Bob Kerr, Forward; "Red" Ross, Guard; Bob Short, Forward.



The team entered the Georgia State Tournament for Junior Colleges; they defeated Norman Park and lost to South Georgia College. They played in the Southeastern Junior College Tournament at Athens, Tenn., and in an invitation tournament at Lawson General.

In 26 games, including two in the first tournament, the team scored 1598 points for an average of 62 points per game. Last year's average was 48.8 points per game. Honors in scoring went to Bob Short, James Hutto, and Bob Kerr, with 355, 339, and 305 points respectively.

The Lions and Coach Rushton are to be congratulated on the excellent showing that they have made this season. This year's team will be remembered as one of the best that Young Harris College has ever had. (See final results in the advertising section.)





Y. H. D. S. FOOTBALL TEAM

First row: Winton Carlock, James Israel, Bobby Fitzpatrick, Bobby Barlow, Charles McConnell, Gerald Williams, Kenneth Millican, Bob Smith, and Eugene Dunn. *Second row:* Gene Robarts, George Dasher, Jere Summers, Leroy Smith, Bryan Craft, Bob Kerr, and Leland Denman.

SUSAN B. BASKETBALL TEAM

First row: Nancy Carter, Johnnie Freeman, Evelyn Westbrook, Nell Davis. *Second row:* Elouise Lott, Lettie Lee Westbrook, Mary Prince, Lou Bryson, Jane Veal, Peggy Sue Barfield.



Y. H. D. S. BASKETBALL TEAM

First row: Billy Childres, Bob Smith, James Israel, Theodore Wood, Charles Stephens, Gale Rogers. *Second row:* Robert Rigsby, Gene Robarts, Melvin McKeehan, Bobby Fitzpatrick, Richard Barnhill, Wilford Hinely, Leroy Smith, Maston Cooper, Winton Carlock, and Bobby Barlow.

PHI CHI FOOTBALL TEAM

First row: Richard Ross, Zip Miller, James Curtis, Dick Kiker, Bill Bryson, and James Hutto. *Second row:* Chuck Beaver, Wesley Morrison, James Griner, Bob Short, Sanford Speir, Jerry Hunt, and Charlie Francis.



PHI DELTA BASKETBALL TEAM

First row: Mary Knight, Jewel Nelson, Lillian Stewart. *Second row:* Barbara Noland, Jean Speir, Mildred Speir, Pat Moate, Gloria Anderson.

PHI CHI BASKETBALL TEAM

First row: Zell Miller, Edgar Jenkins, Chuck Beaver, Justo Bethard, Tommy McMullan. *Second row:* Harold Knight, Sanford Speir, Joe Smith, Chester Austin.



Organizations

*Right: Walter H. Rich Building.
Below: Young Harris Band, from the 1920 EXCELSIOR.*

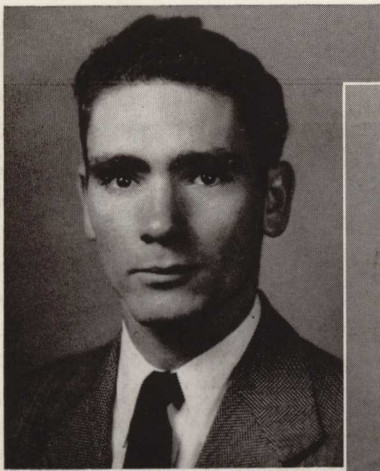




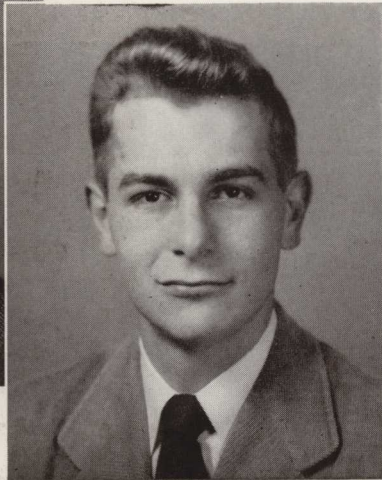
*Working together brings a joy, a sense of loyalty,
an understanding of one's fellowman.*

Young Harris

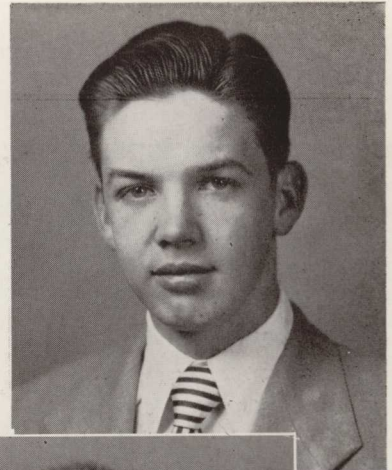
Debating Society



WILLIAMS



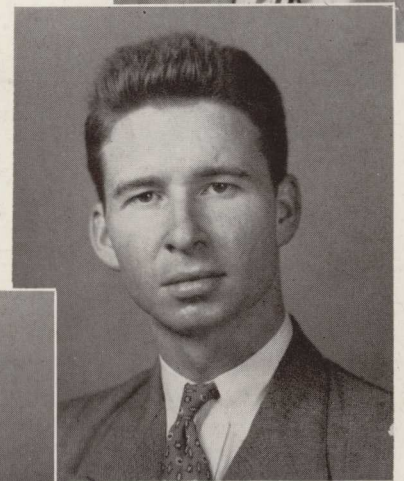
SASSER



BARLOW

WILLOUGHBY

COWART



PRESIDENTS

GERALD WILLIAMS *Fall Quarter*

DOUGLAS SASSER *Winter Quarter*



CHAMPION DEBATERS

DOUGLAS SASSER

BOBBY BARLOW

JACK WILLOUGHBY

DAVID COWART

Alternate

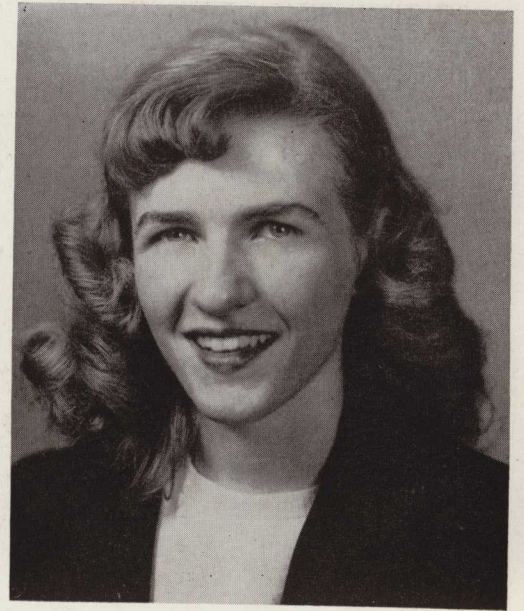
Kneeling: Earl Nunn, Lamar Adair, Gene Roberts, Leland Denman, Bob Smith, Jack Weldon. *Standing, first row:* Melvin McKeehan, Manuel Machado, Raul Lugioyo, James Israel, Bill Childres, Frank Summerour, Gerald Williams, Jack Willoughby, Marvin Pulliam, Jr., Lindy Hayes, Eugene Dunn, Bobby Barlow. *Second row:* Theodore Wood, Gale Rogers, James Helton, Travis Barnes, John Usry, Bob Fitzpatrick, Richard Barnhill, Grady Parrish. *Third row:* Felix Palmer, Robert Rigsby, Winton Carlock, James Thompson, Johnny Gibson, Bob Kerr, Charles McConnell, Leroy Smith, Charles Warwick, Bill Fox, Jimmy Weeks.



Susan B. Harris Literary Society

President NANCY CARTER

The Susan B. Harris Society from the 1918 ARBUTUS.

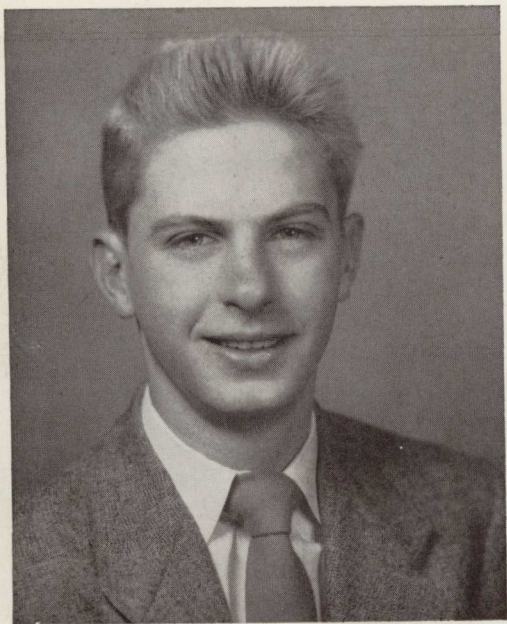


CARTER

Seated, first row: Gerry Galloway, Lettie Lee Westbrook, Betty Langford, Martha Prince, Mary Prince, Mary Parks Bugg, Mary Helen Phillips. *Second row:* Martha Axley, Nell Davis, Elouise Lott, Terre Blair, Anne Hemphill, Luke Rushton (Mascot), Kansie Lee Newton, Betty Jean Styles, Blanche Panter, Betty

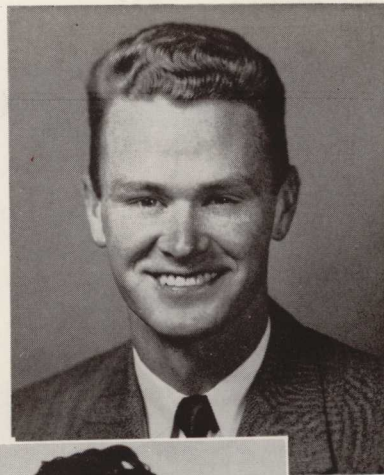
Andrews. Standing, first row: Elizabeth Ledford, Johnnie Sue Freeman, Jeanette Tatum, Evelyn Westbrook, Juayne Harris, Nancy Carter, Jane Veal, Mary Frances Axley, Barbara Ledford. *Last row:* Thelma Roberts, Dorothy Palmer, Doris Denton, Dolores Smithson, Hazel Toles, Roberta Maney, Carmen Gutierrez, Eunetta Purvis, Sarah King.





MILLER

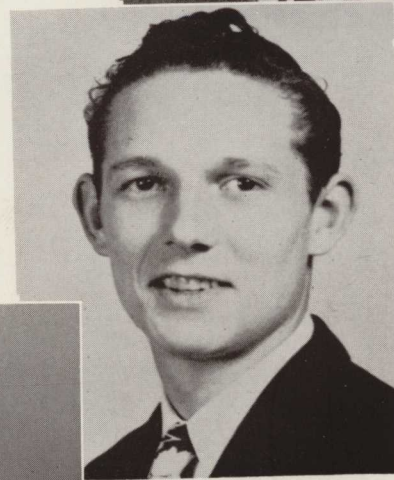
Phi Chi Debating Society



COKER

SPEIR

VEATCH



President

ZELL MILLER



CHAMPION DEBATERS

ZELL MILLER

RALPH COKER

SANFORD SPEIR

BILL VEATCH
Alternate

Seated: Bill Veatch, "Zip" Miller, Chuck Beaver, Dick Kiker, James Griner, Bob Short, Charlie Francis, James Curtis, Richard Ross. *Standing:* Wiley Noland, Hoyt Robinson, Wesley Morrison, John Gregory, Lee Jones, Jerry Hunt, Sanford Speir, Chester Austin, James Hutto, Bill Bryson, Ralph Coker, Bob Barrow.



Phi Delta Literary Society

PRESIDENTS

DORIS CASH *Fall Quarter*
SARA SUE DOTSON *Winter Quarter*



DOTSON



CASH

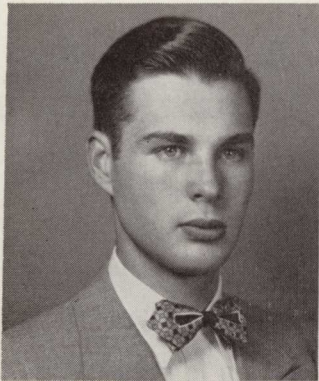
The Philadelphian Literary Society from the 1918 ARBUTUS



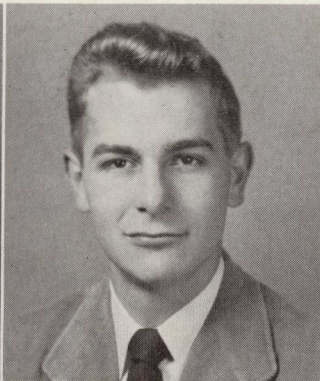
Seated: Lou Ellen McDade, Kippy Kirkpatrick (Mascot), Olga Leon. *Standing, first row:* Gloria Anderson, Bobbie Adams, Frances Knight, Sara Sue Dotson, Doris Cash, Geraldine Spiva, Betty Fountain. *Second row:* Barbara Noland, Martha Lugioyo, Jewel Nelson, Lillian Stewart, Mildred Speir, Betty McMillin, Mary Knight. *Last row:* Anne Harris, Wanda Berrong.



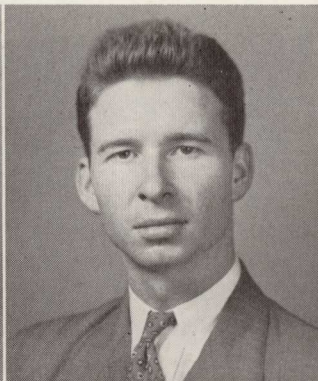
Washington Day Speakers



BARNES



SASSER



WILLOUGHBY



BRYSON
COKER
SPEIR

YOUNG HARRIS DEBATING SOCIETY

TRAVIS BARNES
DOUGLAS SASSER
JACK WILLOUGHBY

PHI CHI DEBATING SOCIETY

BILL BRYSON
RALPH COKER
SANFORD SPEIR

PHI CHI DEBATING SOCIETY

BILL BRYSON
EDGAR JENKINS
BILL VEATCH

YOUNG HARRIS DEBATING SOCIETY

BILL CHILDRES
DAVID COWART
EUGENE DUNN



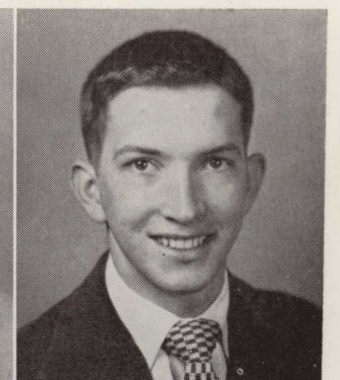
CHILDRES
COWART
DUNN



BRYSON



JENKINS



VEATCH

Clay Medal Speakers

YOUNG HARRIS COLLEGE LIBRARY
YOUNG HARRIS, GA.



The Schubert Music Club

First row: Mildred Bentley, Nancy Carter, Geraldine Galloway, Carolyn Corn, Mary Frances Axley, Charles Waters (on floor), Eunetta Purvis, Dorothy Palmer, Martha Axley, Jeannine English, Mrs. Walter Downs. *Second row:* Dale Cheely, James Gilbert, Felix Palmer, Robert Rigsby, Carmen Gutierrez, Lillian Stewart. *Standing:* Marylyn Jones, Edna Bruce, Grady Parrish, Joan Crawford.

First row: Jeannine English, Elizabeth Ledford, Beatrice Autry, Nancy Carter, Mrs. Walter Downs (at organ, Frances Knight, Hilda McCurdy, Mary Morcock, Martha Axley. *Second row:* Mrs. Lawrence Atkins, Roxanna Austin, Mrs. Luke Rushton, Mary Frances Axley, Betty Fountain, Edna Herren, Joyce Lynch, Eunetta Purvis, Evelyn Westbrook, Mary Knight, Carmen Gutierrez. *Third row:* Theodore Wood, Gene Robarts, Travis Barnes, Adair See, Sanford Speir, Leroy Smith, Grady Parrish, Bill Fox, Gerald Williams, Bill Childres, Bob Gary, Bill Veatch, David Cowart.

The Young Harris College Choir



Alpha Psi

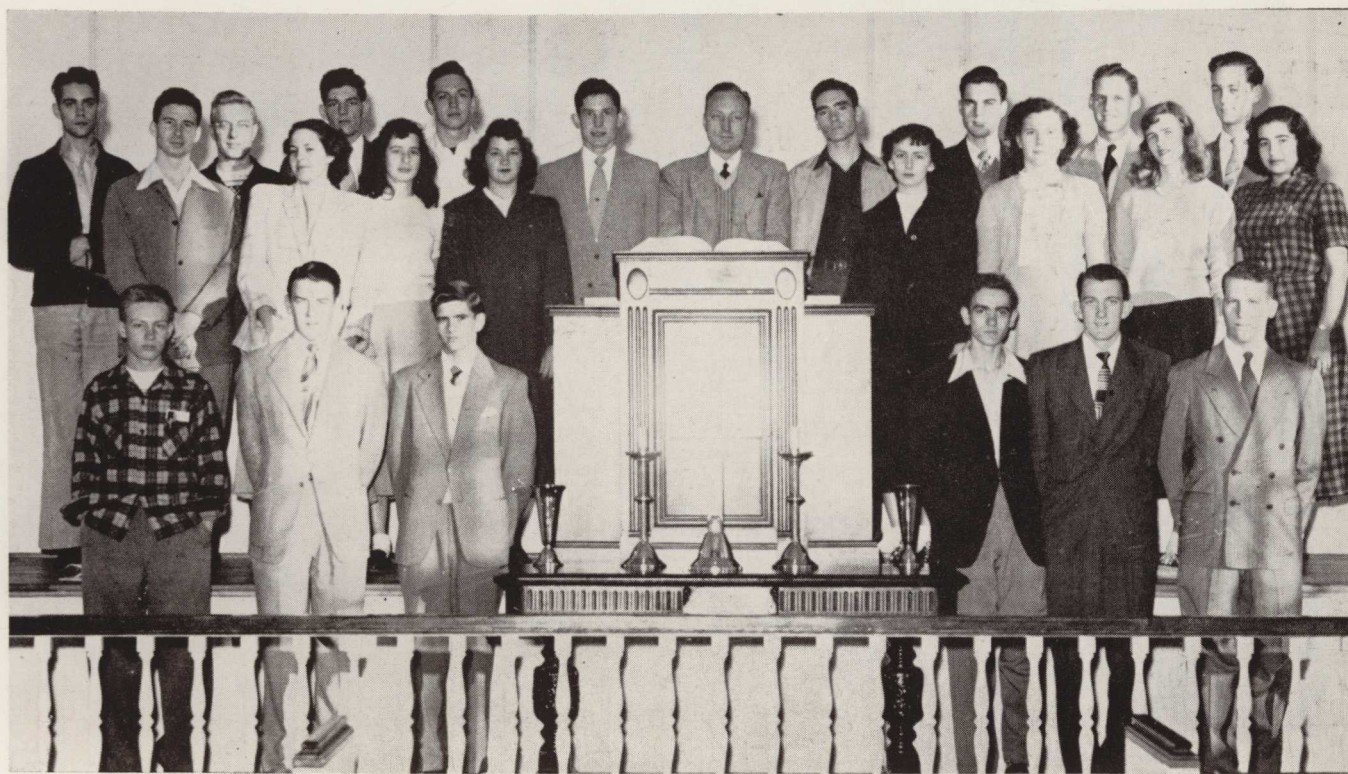


Seated, first row: Jane Veal, Mildred Spier, Betty Jean Styles, Martha Prince, Mary Prince, Betty Langford, Lettie Lee Westbrook. *Second row:* Carmen Gutierrez, Hazel Toles, Juyne Harris, Mary Parks Bugg, Anne Hemphill, Kansie Lee Newton, Mary Helen Phillips, Betty Andrews, Joyce Lynch. *Standing:* Nancy Carter, Johnnie Sue Freeman, Evelyn Westbrook, Nell Davis, Elouise Lott, Sarah King, Dorothy Palmer, Jeannine English, Mildred Bentley, Jeanette Tatum, Roberta Maney.

First row: Marvin Pulliam, John Gregory, Chester Austin. *Second row:* Midge Bentley, Betty McMillin, Miss Beatrice Autry, Jean Speir, Lettie Lee Westbrook. *Third row:* Jeannine English, Lou Ellen McDade, Carmen Gutierrez, Betty Jean Johnson, Sarah King, Evelyn Westbrook, Anne Harris.

Commercial Club





Ministerial Conference

First row: David Cowart, Bob Gary, Robert Rigsby, Beverly Cook, Bill Childres, Richard Barnhill.
Second row: Jack Willoughby, Olga Leon, Terre Blair, Jane Veal, Elizabeth Ledford, Jeannette Tatum, Nancy Carter, Carmen Gutierrez. *Third row:* Bill Fox, Eugene Dunn, Carroll Crosby, Winton Carlock, Wilford Hinely, Dr. Dow Kirkpatrick, Gerald Williams, Travis Barnes, Grady Parrish, Marvin Pulliam, Jr.

Kneeling: David Cowart, Bill Childres, Evelyn Westbrook, Nell Davis, Nancy Carter, Jane Veal, Mary Frances Axley. *Standing:* Betty Jean Styles, Wilford Hinely, Midge Bentley, Travis Barnes, Dr. Dow Kirkpatrick.

Methodist Student Fellowship Council



DORCAS

CLUB



GLORIA ANDERSON *President*
ANNE HARRIS *Vice-President*

DORIS CASH *Secretary*
GERALDINE SPIVA *Treasurer*

Left to right: Olga Leon, Gloria Anderson, Geraldine Spiva, Anne Harris, Kansie Lee Newton, Lillian Stewart, Eunetta Purvis, Nancy Carter, Mildred Speir, and Doris Cash.





International Relations Club

Sitting: Bill Fox, Robert Rigsby, Jack Willoughby, Bob Gary, Billy Childres, Grady Parrish, and Frank Summerour. *Standing:* Thomas Harris, Jeanette Tatum, Glorinda Anderson, Anne Harris, Anne Hemphill, Miss Harrison, Lou Ellen McDade, Betty McMillen, Joyce Lynch, Betty Jean Styles, Nell Davis, and Eugene Dunn.

First row: Liz Ledford, Johnnie Freeman, Mary Frances Axley, Evelyn Westbrook, Lettie Lee Westbrook, Kansie Lee Newton, and Betty Langford. *Second row:* Elouise Lott, Parkie Bugg, Betty Andrews, Martha Axley, Betty Jean Johnson, Mildred Bentley, and Betty Jean Styles. *Third row:* Joyce Lynch, Carmen Gutierrez, Juayne Harris, Sarah King, Terre Blair, Edna Bruce, Lou Ellen McDade, Nell Davis, Anne Hemphill, Jeanette Tatum, and Nancy Carter.

Young Ladies Circle



The Enotah Staff at work



NANCY CARTER Editor

ZELL MILLER Associate Editor

RALPH COKER . Business Manager

LOU ELLEN McDADE
Literary Editor

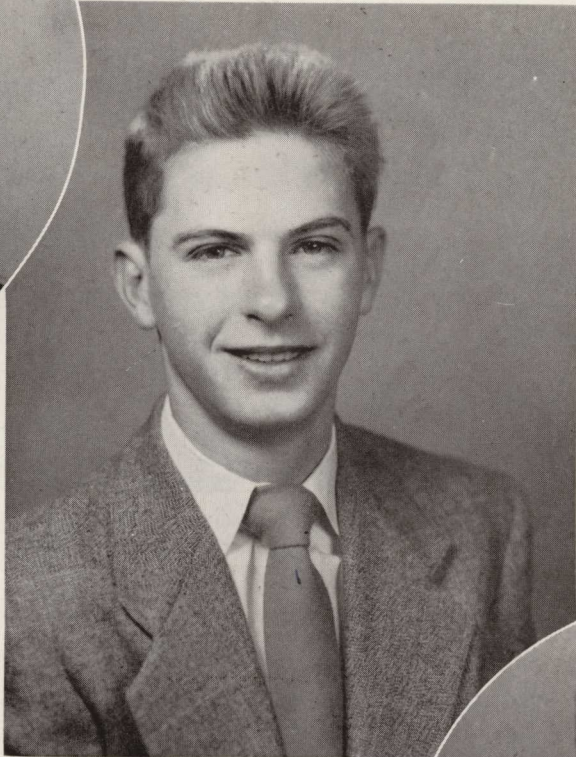
JUYNE HARRIS Secretary

DICK KIKER, Advertising Manager

DOUGLAS SASSER and DORIS

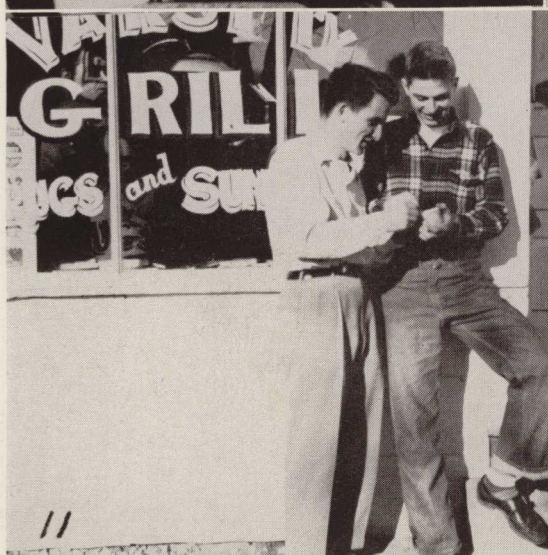
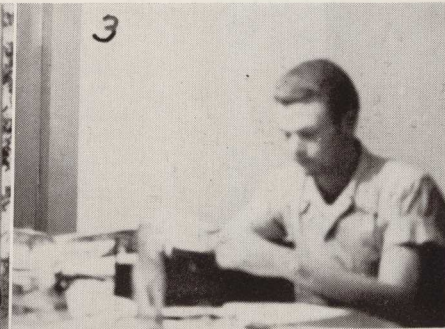
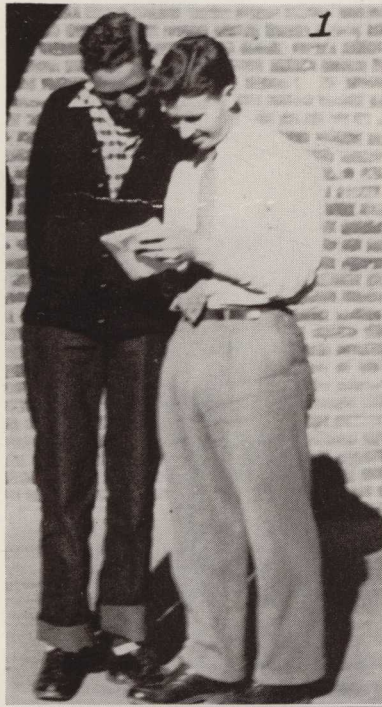
DENTON . Promotions Managers

TERRE BLAIR Art Editor



Other members: Billy Childres, Midge Bentley, Joyce Lynch, Barbara Noland, Melvin McKeehan, Lamar Adair, Grady Parrish, Eunetta Purvis, Sara Sue Dotson, Lettie Lee Westbrook, Evelyn Westbrook, Betty Jean Johnson, Jack Willoughby, Paul Agnew, Mary Frances Axley, Lou Bryson, Marvin Pulliam, and Miss Edna Herren, Faculty Advisor.





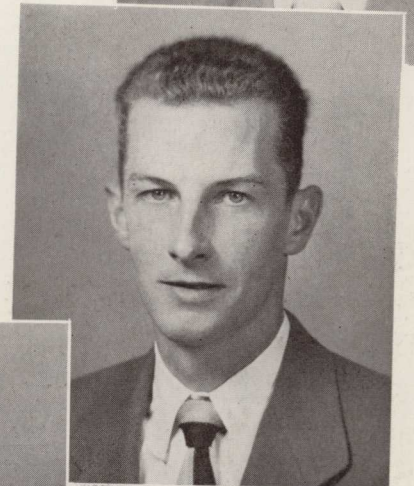
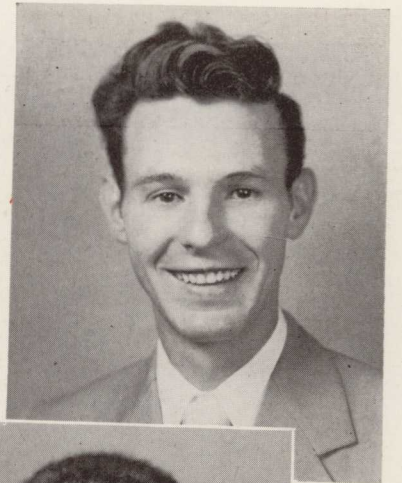
On opposite page: Midge and Bunker help with the waste paper drive; Lamar, Eunetta, and Marvin look over the play sponsored by the annual; "Red", Joyce, and Barbara talk Reba into giving an ad. Above: (1) Grady and Jack examine the play; (2) Billy and Lou Ellen get ready for a ball game; (3) "Red" checks the file; (4) Lettie Lee finishes the wood work in the annual room while Miss Herren smiles at the "birdie"; (5) Terre and Miss Herren confer

about a page; (6) Lettie Lee and Betty Jean check the copy; (7) Evelyn and Nancy return from getting ads; (8) Lettie Lee neglects her sweeping to watch Betty Jean type; (9) Nancy cuts out Spat "paper dolls"; (10) Zell designs a lay-out; (11) Dick and Zell take time out for refreshments; (12) Sara Sue and Mary Frances go to Mrs. Tanner's for waste paper; (13) Midge identifies group pictures.

Veterans Club



BRYSON



AUSTIN
ARROWOOD
SHERWOOD



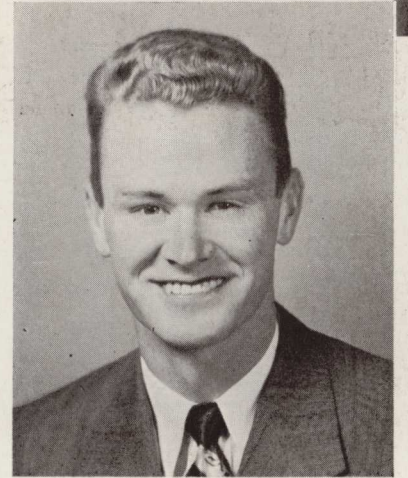
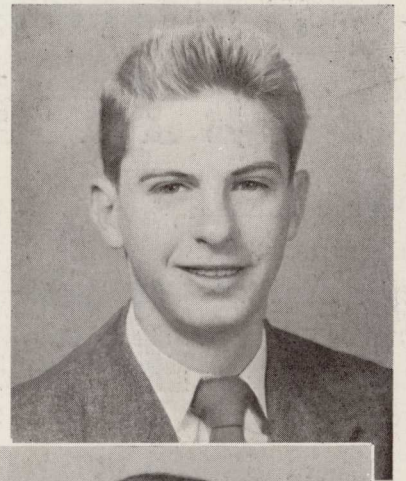
- BILL BRYSON *President*
- CHESTER AUSTIN *Vice-President*
- GENE MCCONNELL *Secretary (not pictured)*
- JOHN ARROWOOD *Treasurer*
- FITZHUGH LEE SHERWOOD *Chaplain*

First row: Julius Earle, Roy Gibby, Bill Bryson. Second row: Morris Moore, Dick Kiker, Thomas Harris, Harold Knight, James Curtis, Chester Austin. Third row: Gene McConnell, John Arrowood, Milton Newsome, Fitzhugh Lee Sherwood, and Wiley Noland.



Spat Club

ZELL MILLER	President
RALPH COKER	Vice-President
BILL BRYSON	Secretary
WESLEY MORRISON	Treasurer
DOUGLAS SASSER	Anniversarian



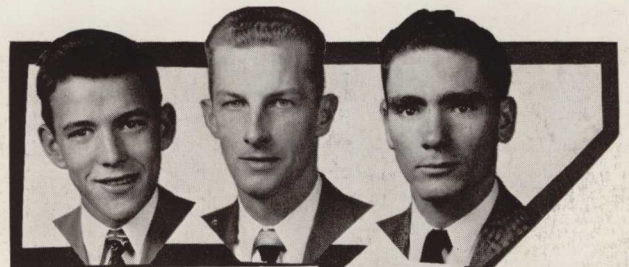
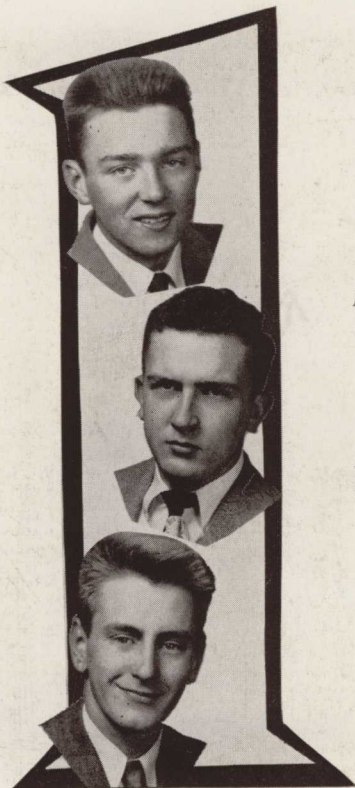
BRYSON



MORRISON



SASSER



Left, top to bottom: Bob Kerr, Charlie Francis, and Hoyt Robinson.

Right, around number: Kenneth Millican, John Arrowood, Gerald Williams, Wiley Noland, Raul Lugioyo, Theodore Wood, and Dick Kiker.



Student Council

DOUGLAS SASSER *President*
 BETTY JEAN STYLES *Vice-President*
 TERRE BLAIR *Secretary-Treasurer*
 GERALD WILLIAMS . *Solicitor General, Fall Quarter*
 GRADY PARRISH . *Solicitor General, Winter Quarter*



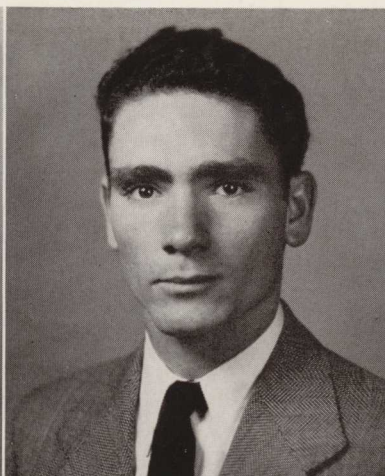
SASSER



STYLES



BLAIR



WILLIAMS



PARRISH

First row: Carroll Crosby, "Bunker" Sasser, Travis Barnes, Mr. Downs, Frank Summerour, Theodore Wood. *Second row:* Grady Parrish, Terre Blair, Sarah King, Evelyn Westbrook, Liz Ledford, Nancy Carter, Juyn Harris, Lettie Lee Westbrook, Doris Cash, Bob Gary. *Third row:* Bill Fox, Betty Jean Styles, Eugene Dunn, Miss McCurdy, Mary Frances Axley, Lou Ellen McDade, Billy Childres.





Appleby Hall Council

First row: Sara Sue Dotson,, Evelyn Westbrook, Doris Cash, Nancy Carter, Juyne Harris. *Second row:* Sarah King, Lettie Lee Westbrook, Elizabeth Ledford, Betty Jean Styles, Terre Blair, Lou Ellen McDade, Mary Frances Axley.

Dormitory Councils

Peel Hall Council

First row: Gene Robarts, James Hutto, James Gilbert, George Dasher. *Second row:* Leland Denman, Bryan Craft, Lamar Adair, Richard Barnhill. *Third row:* Billy Styles, James Israel, Earl Nunn, Professor Bob Andress, John Usry, Bob Smith.



Enotah Echoes Staff



First row: Robert Rigsby, Mildred Bentley, Lettie Lee Westbrook, Joyce Lynch, Douglas Sasser, Frank Summerour, Bill Childres, Eunetta Purvis, Betty Langford, Nancy Carter, Jack Willoughby, Grady Parrish, Bob Gary. *Second row:* Bryan Craft, Kansie Lee Newton, Betty Jean Styles, Evelyn Westbrook, Carmen Gutierrez, Betty Andrews, Betty Jean Johnson, Lou Ellen McDade. *Third row:* Leland Denman, Bill Fox, Marvin Pulliam, Zell Miller, Bobby Barlow, and Prof. Robert Andress.

Left: Caser's bench, 1919 (heating system from furnace in Sharp Hall to Appleby). *Left to right:* Worth Sharp, Horace Tanner, and S. G. Miller. *Lower left:* Mrs. S. G. Miller by the bell which is now in tower of the Chapel (1922). *Lower right:* From the 1920 EXCELSIOR.

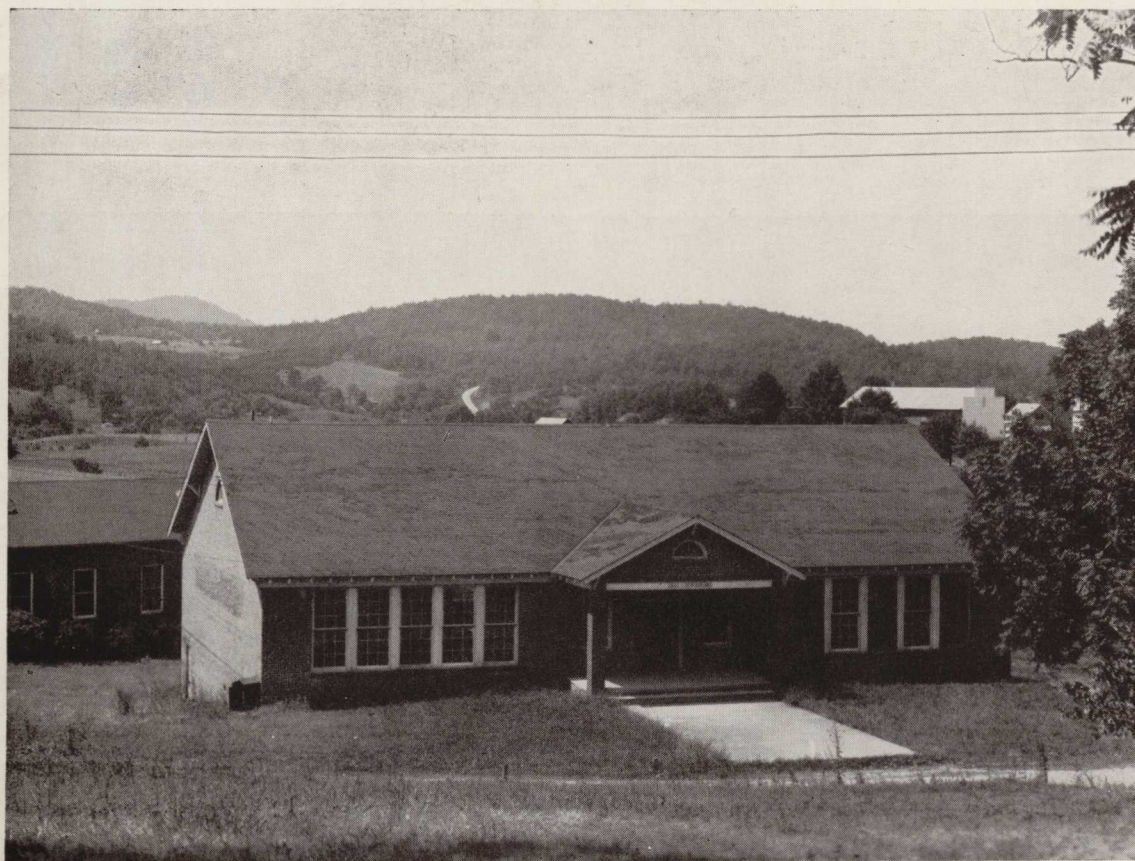




First row: Dorcas initiation, featuring Mildred Speir, Kansie Lee Newton, Eunetta Purvis, and Doris Cash. Second row: Between classes; Saturday styles; "Good Neighbors"; the "Vice-President" relaxes. Third row: Dates; no dates; more dates; Mrs. "A" happy about everything!

Features

*Right: The Library with Three Sisters in background.
Below: The Charles S. Reid Building.*





In whatever we do, the best is always our goal.



COLLEGE . . . *Best All-Round*

Nancy Carter and Gerald Williams



COLLEGE . . . *Most Intellectual*

Betty Jean Styles and Wilford Hinely



COLLEGE . . . *Most Popular*

Sara Sue Dotson and Gerald Williams



COLLEGE . . . *Best Looking*

Olga Leon and Douglas Sasser



COLLEGE . . . *Most Athletic*

Evelyn Westbrook and Wesley Morrison



COLLEGE . . . *Best Dressed*

Gloria Anderson and Douglas Sasser



ACADEMY . . . *Best Looking*

**Barbara Noland and Wiley Noland
(Barbara Noland, Best All-Round;
Wiley Noland, Best Dressed)**



ACADEMY . . . *Most Intellectual*

Geraldine Galloway and Earl Nunn



ACADEMY . . . *Most Popular*

**Juyne Harris and Charlie Francis
(Juyne Harris, Best Dressed;
Charlie Francis, Best All-Round)**



ACADEMY . . . *Most Athletic*

Barbara Noland and George Dasher

Presenting

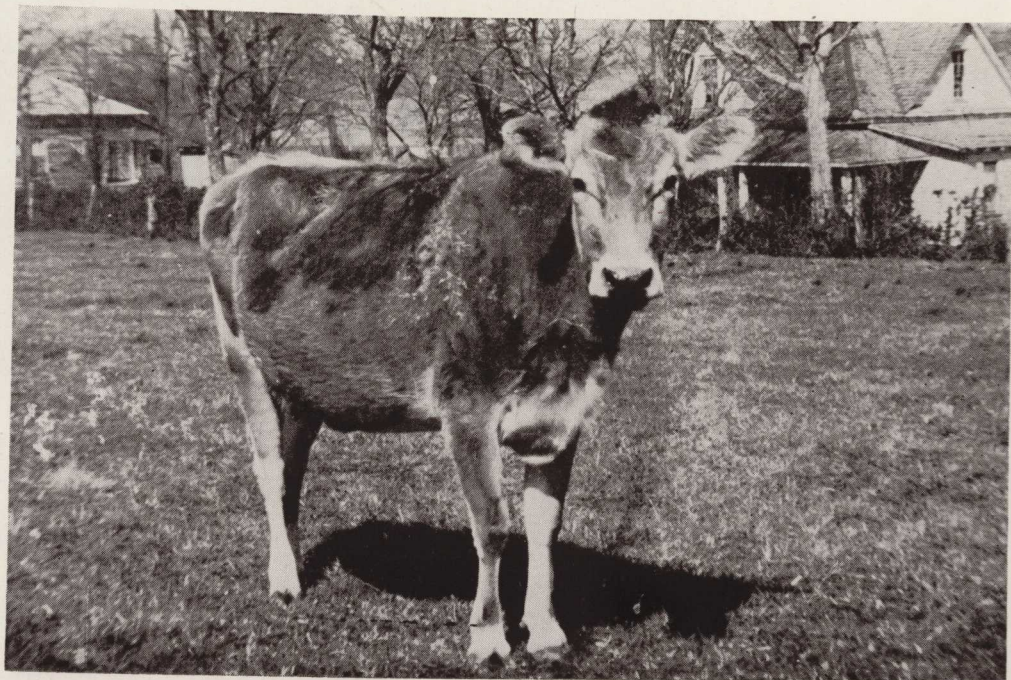
The Winning Pictures in Camera Club Contests



Above, left: "Dating"
by JIMMIE WEEKS
Classification: Student Activities.

Above, right: "Contrasts"
by JULIUS EARLE
Classification: Portraits.

Lower right: "Pastoral Portrait"
by JIMMIE WEEKS
Classification: Animals.



Beauty Contest Winners



Mrs. Jean Taylor

Sponsored by Spat Club



Miss Juyne Harris
Sponsored by
Young Harris Debating
Society



Miss Olga Leon
Sponsored by
Doreas Club



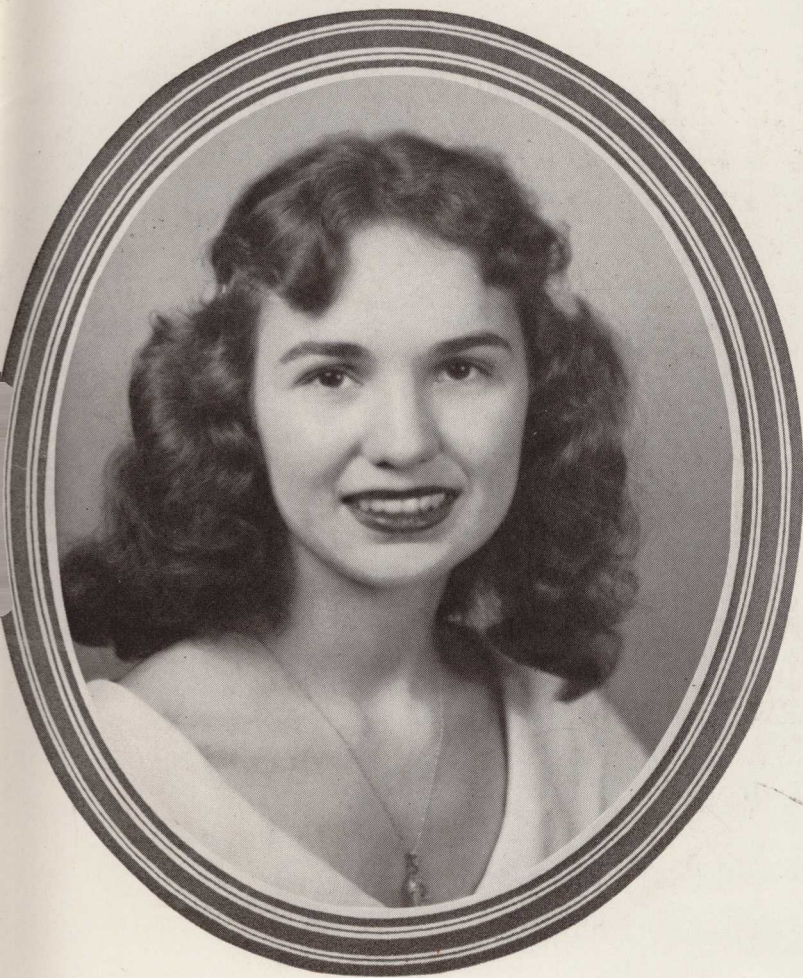
Miss Barbara Ledford

Sponsored by
Susan B. Harris Society



Miss Roberta Maney

Sponsored by
Appleby Hall



Miss Dolores Smithson

Sponsored by
Commercial Club

Advertisements

*Right: The well with the Chapel in the background.
Below: Hamby Hall.*





*Young Harris College could not have existed
without its friends.*

Do You Remember ?

A. J. JENKINS

The Students' Barber Shop

in

JENKINS HOTEL

NEAR CAMPUS

THE VIOLET THEATER

YOUNG HARRIS, GEORGIA

J. H. Caldwell

of

YOUNG HARRIS, GEORGIA

Is prepared to transfer students from Murphy to Young Harris at a uniform price of \$1.50 and 50c for trunks.

FIRST CLASS TEAMS AND HACKS

All should write him in advance, as this is cheaper than to get a hack in Murphy.



STUDENTS, beware of the rumors that I do not carry less than a hack load, for I am ready and willing to transport any number, however small, at any time.

Bank of Young Harris

YOUNG HARRIS, GEORGIA

We solicit your banking business, whether large or small. Every courtesy extended customers within the grounds of consistent banking.

JNO. D. WALKER, *President*
J. E. DONALD, *Cashier*

Carolina and Georgia Railway Company

"The Hiawasse Valley Route"

FREIGHT and PASSENGER SERVICE

Special Schedule for Students when necessary, connecting with Southern Railway at Andrews, North Carolina.

J. H. STEPHENS

DEALERS

in

Notions, Groceries, Tobacco, Drugs,
Candies, Stationery, School Supplies,
Coffins, Caskets, and Automobile
Supplies

YOUNG HARRIS, GEORGIA

Young Harris Tea Room

A GOOD PLACE TO EAT

*Your Patronage Always
Appreciated*

MRS. MAC AND SON

NOTE
of
APPRECIATION

There are many people to whom we are indebted and whom we wish to thank for many things, including those who helped us get ads and who let us use their cars; but the two whom we can't thank enough are Miss Herren and Professor Humphreys. The work, extra hours, and "push" that Miss Herren gives the annual just can't be described—she's wonderful! We hope Professor Humphreys will forgive us for leading him from one end of the campus to the other to make all those pictures and will accept our thanks for his many flash bulbs and trips up the parsonage hill!

We want to say a special word of appreciation to our advertisers, whom we recommend to you because of their interest in the activities of our Alma Mater. Some of them are old friends; some are new. We have indicated in each advertisement the number of years that each firm or individual has helped to make possible the publication of an annual. Some of these numbers vary a little from those in last year's annual because we have been able to check some of the older annuals that the staff of last year had not been able to find.

To the other members of the staff I want to say that I am grateful for all that you have done to make our annual a success.

Sincerely,

NANCY CARTER, *Editor*

Compliments

of

COLONEL AND MRS JOHN C. CARTER

— 1 —
Year

Service Coach Lines System

Service Coach Lines, Inc.
Service Bus Lines, Inc.
Neel Gap Bus Line, Inc.

Charter Service Also Available

Chattanooga
Murphy
Young Harris
Gainesville
Athens
Macon
Dublin
Vidalia
Glennville
Jesup
Savannah
Brunswick
Augusta
Jacksonville



DUBLIN, GA.

— 11 —
Years

Compliments of



GAINESVILLE, TOCCOA, CUMMING,
GEORGIA

— 7 —
Years

**PILGRIM-ESTES FURNITURE
COMPANY**

Complete Home Furnishers

Living Room, Dining Room,
Bedroom Furniture


Rugs and Carpets

Philco Radios and Television

Frigidaire Appliances

Youngstown Cabinet Sinks
Wall and Floor Cabinets

GAINESVILLE, GEORGIA

 12
Years

Sailors Motor Company, Inc.

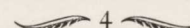
"There's a FORD in Your Future"

FORD

SALES and SERVICE

ELLIJAY, GEORGIA

Phone 82

 4
Years

SMALL AND ESTES

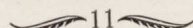
BAKERS

OF

AUNT BETTY'S

BREAD AND CAKE

GAINESVILLE, GEORGIA

 11
Years

K & K AUTO PARTS CO.

AUTO, TRUCK, AND TRACTOR
PARTS

Distributors

Phone 272

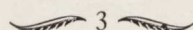
ELLIJAY, GEORGIA

Compliments

of

DR. ED W. WATKINS

ELLIJAY, GEORGIA

 3
Years

TOURNAMENT RESULTS

(Continued from basketball page)

In the Southeastern Tournament the Mountain Lions fell before Tennessee-Wesleyan, 82-69. In the Georgia Invitational Tournament held at the Southern Tech gym in Atlanta, Young Harris won the second place trophy, being defeated by Oglethorpe University, 47-41.

The season's record was 21 won, 10 lost. The team amassed a total of 1897 points for the season. Bob Short was high point man with 421 points. He was followed by James Hutto with 394. In the last tournament Hutto won a trophy as all-tournament center.

**ELLIJAY HARDWARE AND FURNITURE
COMPANY**

H. W. HAMPTON, *Owner*

QUALITY MERCHANDISE

ELLIJAY, GEORGIA

Frigidaire Ranges—Refrigerators—Water Heaters—Ru-Ber-Oid Shingles
Sidings and Roll Roofing—Sparton, Motorola, and Stewart-Warner
Radios—Youngstown Kitchens by Mullins—Boatwright
Paint and Varnishes—National Pressure Cookers
Oliver Farm Equipment—Simmons
Bedding—Plumbing—Wire

"EVERYTHING FOR THE HOME"

4
Years

Compliments

of

**CARTER
GROCERY
COMPANY**

GAINESVILLE, GEORGIA

3
Years

J. C. PENNEY CO.

"Where Savings Are Greatest"

GAINESVILLE, GEORGIA

3
Years

**Townson Funeral Home
Western Carolina Mutual Burial
Association**

Where the Cost Is So Low

Ask Us About This Service

MURPHY, NORTH CAROLINA

3
Years

Compliments

of

THE BANK OF ELLIJAY

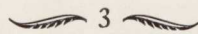
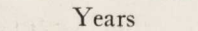
Member of the Federal Deposit

Insurance Corporation

"LET THIS BANK PROTECT

YOUR SAVINGS"

ELLIJAY, GEORGIA

 3 
Years

**FRANK ABERNATHY
FUNERAL HOME**

Lady Attendant

QUICK AMBULANCE SERVICE

DAY OR NIGHT

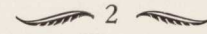
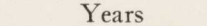
YOUNG HARRIS, GEORGIA

Phone Baldview 2

BLAIRSVILLE, GEORGIA

Phone 77

Our Service Must Please

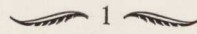
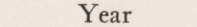
 2 
Years

COMPLIMENTS OF

AMERICAN THREAD COMPANY

UNEXCELLED FOR SEWING COTTON, SILK

RAYON, AND WOOL MATERIALS

 1 
Year

Compliments

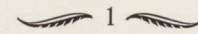
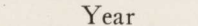
of

A FRIEND

Compliments of

WIMPEY'S SERVICE STATION

ELLIJAY, GEORGIA

 1 
Year

Compliments

of

A FRIEND

Compliments

of

BLUE RIDGE PHARMACY

For Prescriptions
The Rexall Store

BLUE RIDGE, GEORGIA

1
Year

PENLAND BROTHERS

ELLIJAY, GEORGIA

2
Years

Professor J. E. Weeks

ELLIJAY, GEORGIA

2
Years

E. L. BROWN

YOUNG HARRIS, GEORGIA

3
Years

SHIELDS MOTOR COURTS

MURPHY, NORTH CAROLINA

1
Year

MURPHY FLORIST

MURPHY, NORTH CAROLINA

1
Year

Southern Flooring Co.

OAK FLOORING

HELEN, GEORGIA

3
Years

O. H. FOSTER

ELLIJAH, GEORGIA

1
Year

Gilmer County Farm Development Association

Feeds, Seeds and Fertilizer

ELLIJAY, GEORGIA

1
Year

BILL WESTMORELAND

County Clerk

ELLIJAY, GEORGIA

2
Years

CITY CHEVROLET

BLUE RIDGE, GEORGIA

1
Year

HEMBREE FURNITURE COMPANY

BLUE RIDGE, GEORGIA

1
Year

Hampton Truck and Implement Company

BLUE RIDGE, GEORGIA

2
Years

HULSEY'S "The Ready-to-Wear Store"

Phone 316
GAINESVILLE, GEORGIA

2
Years

Imperial Pharmacy

Your Best Drug Store

GAINESVILLE, GEORGIA

4
Years

GALLANT BELK COMPANY

Gainesville's Largest and
Best Department Store

GAINESVILLE, GEORGIA

4
Years

Jimmie Reeves Furniture Company

GAINESVILLE, GEORGIA

6
Years

SAUL'S

GAINESVILLE, GEORGIA

2
Years

BANK OF HIAWASSEE

MEMBER FEDERAL DEPOSIT INSURANCE CORPORATION

Resources Over \$1,000,000

DO BUSINESS WITH YOUR LOCAL BANK

J. Y. DENTON, *Cashier*

6
Years

JAKE SACKS COMPANY

The Old Reliable

Phone 153

GAINESVILLE, GEORGIA

2
Years

COMPLIMENTS

OF

FRIERSON-McEVER CO.

QUALITY APPAREL FOR MEN

GAINESVILLE, GEORGIA

16
Years

**DAVIS-WASHINGTON
COMPANY**

BUILDING MATERIALS

GAINESVILLE, GEORGIA

13
Years

Hill Top Cabins

MODERN CABINS
WORTH HEDDEN, *Owner*

HIAWASSEE, GEORGIA

1
Year

Compliments
of

A FRIEND

ELLIJAY, GEORGIA

3
Years

HIAWASSEE HARDWARE COMPANY

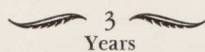
BUILDING MATERIAL, ELECTRICAL SUPPLIES,
SEED AND FERTILIZER

Hiawassee, Georgia

PAUL E. PARIS

DICK PARIS

J. B. HUNT

 3
Years

CLAY HARDWARE

International Parts

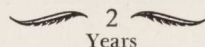
GENERAL HARDWARE

Hayesville, North Carolina

"BABE" MOORE, *Manager*

PAUL E. PARIS

J. B. HUNT

 2
Years

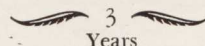
BLAIRSVILLE HARDWARE AND SUPPLY COMPANY

Roofing, Sheet Rock, Cement, Windows and Doors, Paints,
Seeds, Fertilizer, Spray Material, Farm Equipment, Electrical Supplies

BLAIRSVILLE, GEORGIA

PAUL E. PARIS

J. B. HUNT

 3
Years

CONGRATULATIONS
On Your
SILVER ANNIVERSARY

LANCE DRY GOODS

BLAIRSVILLE, GEORGIA

1
Year

**GAINESVILLE STEAM
LAUNDRY**

GAINESVILLE, GEORGIA

11
Years

Gainesville Ford Co.

GAINESVILLE, GEORGIA

6
Years

Compliments of

A FRIEND

ATLANTA, GEORGIA

7
Years

**Cleveland DeLuxe
Restaurant and Cottages**

CLEVELAND, GEORGIA

1
Year

GAINESVILLE JEWELERS

GAINESVILLE, GEORGIA

4
Years

PIEDMONT DRUG CO.

GAINESVILLE, GEORGIA

7
Years

BARRON SHOE SHOP

GAINESVILLE, GEORGIA

5
Years

BEN F. CARR

BLAIRSVILLE, GEORGIA

1
Year

HOOPER'S DRUG STORE

HIAWASSEE, GEORGIA

1
Year

Dockery Chevrolet Co.

BLAIRSVILLE, GEORGIA

1
Year

JACK TARPLEY

Attorney at Law

BLAIRSVILLE, GEORGIA

1
Year

Stovall's 5, 10, 25c Store

CLEVELAND, GEORGIA

1
Year

UNION HARDWARE

BLAIRSVILLE, GEORGIA

1
Year

UNION COUNTY BANK

BLAIRSVILLE, GEORGIA

1
Year

CITY ICE COMPANY

GAINESVILLE, GEORGIA

3
Years

COLWELL DRESS SHOP

BLAIRSVILLE, GEORGIA

3
Years

**G. W. HUDGINS'
DRUG STORE**

BLAIRSVILLE, GEORGIA

1
Year

A. R. Rogers Dry Goods

BLAIRSVILLE, GEORGIA

1
Year

Davenport Auto Supply

BLAIRSVILLE, GEORGIA

1
Year

NEW REGAL HOTEL

MURPHY, NORTH CAROLINA

1
Year

FARMERS FEDERATION

HAYESVILLE, NORTH CAROLINA

1
Year

**Crawford and Mingus
Supply Co.**

HAYESVILLE, NORTH CAROLINA

1
Year

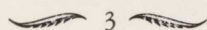
BLAIR THEATER

BLAIRSVILLE, GEORGIA

1
Year

**Blue Ridge Electric
Association, Inc.**

R. E. A. CO-OP
Distributor of
T. V. A. POWER
YOUNG HARRIS, GEORGIA

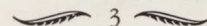


STUDENTS

SUPPORT YOUR *ENOTAH*
ADVERTISERS

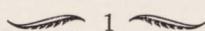
LAWRENCE AND REBA'S CAFE

Chicken — Chops
Sea Food — Sandwiches
Refreshments
YOUNG HARRIS, GEORGIA



Compliments of

DR. LUM G. NEAL, JR.
Reg. No. 4987



DR. L. G. NEAL
Reg. No. 6208

Office Phone—3
Residence Phone—6
CLEVELAND, GEORGIA

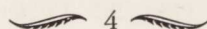
HENN THEATRE

MURPHY, NORTH CAROLINA

and

HENN THEATRE

ANDREWS, NORTH CAROLINA



**Smoky Mountain Gas
Company, Inc.**

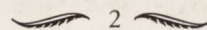
Sales and Service

Smoky Mountain Amusement Co.

New and Used Records

PHONE 76

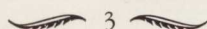
MURPHY, NORTH CAROLINA



HEADS STORE

GENERAL MERCHANDISE

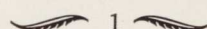
CLEVELAND, GEORGIA



TIGERS CASH STORE

GENERAL MERCHANDISE

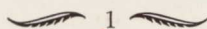
HAYESVILLE, NORTH CAROLINA



BARRETT BROTHERS

Tires - Tubes - Auto Accessories
Home Supplies

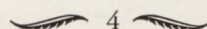
CLEVELAND, GEORGIA



MURPHY LAUNDRY

Phone 159

MURPHY, NORTH CAROLINA



YOUNG L. G. HARRIS COLLEGE

YOUNG HARRIS, GEORGIA

A Junior College under the control

of the

NORTH GEORGIA CONFERENCE

W. L. DOWNS, *President*

L. C. ATKINS, *Registrar*

MRS. LUKE RUSHTON, *Bursar*

19
Years

Visit

THE LITTLE STORE

SCHOOL SUPPLIES - STATIONERY - NOTIONS - GREETING CARDS

and

THAT "IN-BETWEEN" SNACK

Located on the Campus

YOUNG HARRIS COLLEGE

2
Years

BLUE HORSE SCHOOL SUPPLIES
The kind your Mother and Dad used.

Manufactured by

MONTAG BROTHERS, INC.

Atlanta, Georgia

1
Year

A MARK OF
QUALITY FOODS

- CONSISTENT SAVINGS
- COURTEOUS SERVICE
- COMPLETE SATISFACTION

**COLONIAL
STORES**

3
Years



Guest Coffee

Rich body, Pleasing aroma,
Exquisite flavor.



If you cannot purchase this in your home
town—write us—P.O. Box J. S., Chicago (90)



D-24

4
Years

Hotel and Restaurant Supply Company

Manufacturers and Distributors
382 W. Peachtree St., N. W., Atlanta, Ga.
WAlnut 7451-2-3

EQUIPMENT FOR RESTAURANTS
SCHOOL LUNCH ROOMS
and INSTITUTIONS

9
Years

Compliments
of

Murphy Hardware Company

R. C. MATTOX, *Owner*
MURPHY, NORTH CAROLINA

7
Years

Every woman wants a

Neatline
and there's
one for every woman



● Especially designed for
the woman who is style conscious Neatline bras add
emphasis to any costume. Desirable, superior, Neatline
bras are fashioned into dainty creations which brilliantly
interpret that glamorous side of you
... work time or play time ... day
or night a neatline is always
desirable..

*Trade Mark Registered
The Neatline strapless offers
features you've dreamed
about ... ask about this

SOUTHERN BRASSIERE, INC.

1
Year



Compliments of

Tilmon Francis and Sons

7 West Paces Ferry Road

ATLANTA, GEORGIA

1
Year

Compliments of

CHEROKEE FURNITURE COMPANY

W. P. ODEN, *Manager*
MURPHY, NORTH CAROLINA

5
Years

Compliments of

Gibbs Hardware and Auto Supply

MURPHY, NORTH CAROLINA

8
Years

Compliments of

MATHESON AND SWANSON

LEON SWANSON, Owner

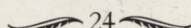
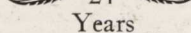
General Merchandise and School Supplies

Bus Depot and Agent for
Smoky Mountain Trailways
Service Coach Trailways

"Through Service from North Georgia to the Sea"

NEEL GAP TRAILWAYS

Ride the Bus and Save the Difference

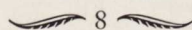
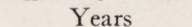
 24 
Years

Flowerland Florist, Inc.

*QUALITY FLOWERS FOR ALL
OCCASIONS*

West Washington at Grove
Telephone 94
GAINESVILLE, GEORGIA

Flowers by Wire Everywhere

 8 
Years

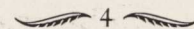
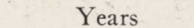
Compliments of

CABLE'S

Always at the Students' Service

ICE CREAM
SANDWICHES OF ALL KINDS

YOUNG HARRIS
GEORGIA

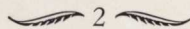

 4 
Years

BLAIRSVILLE CLEANERS

All Work Guaranteed
D. L. MARTIN, Prop.

Alterations and Mending
Lower Prices and Expert Dye Work

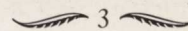

BLAIRSVILLE, GEORGIA

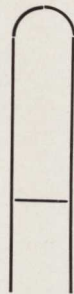
 2 

Compliments

of

HOTEL MILTON
BLAIRSVILLE, GEORGIA

 3 



ALL PORTRAITS

IN THIS BOOK MADE BY

GASPAR-WARE

Studios

30-32 FIFTH STREET, N. W.

**ATLANTA
GEORGIA**



OFFICIAL PHOTOGRAPHERS FOR

Enotah


All ENOTAH negatives are held in our files for several years and portraits can be obtained at anytime. Write us for information and special price list.

Photography

by **GASPAR-WARE** 



PHOTO PROCESS
Engraving Company
ATLANTA



Since the dawn of the century...

WE HAVE SPECIALIZED
IN THE PRODUCTION OF
OUTSTANDING COLLEGE
AND HIGH SCHOOL
YEARBOOKS



FOOTE & DAVIES, INC.

PHONE WALNUT 4600

POST OFFICE BOX 5109

ATLANTA

