

DUCKWORTH LIB., YOUNG HARRIS COLLEGE



5 0839 0018694 9



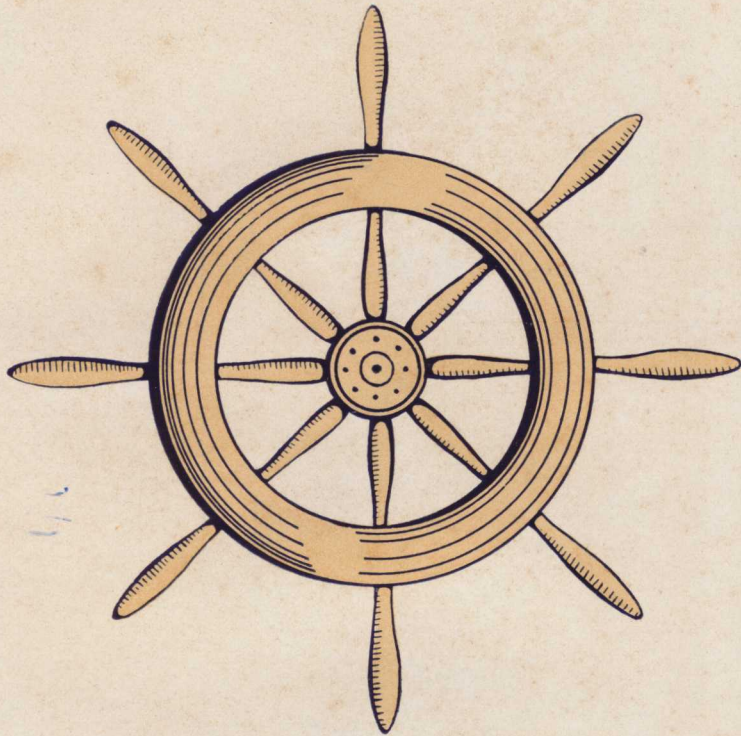
THE ENOTAH

1936

Given in memory of  
**Mr. Leon Swanson**

and in honor of  
**Mrs. Leon Swanson**

August 2007



*The*  
ENOTAH  
1936

---

COPYRIGHT  
1 9 3 6

BOB LANCE  
Editor

EMMETTE DANNER  
Business Manager

---



*The* ENOTAH 1936

Published by

THE SENIOR CLASS

YOUNG HARRIS COLLEGE  
YOUNG HARRIS, GEORGIA

D E D I C A T I O N

to

YOUNG L. G. HARRIS

BECAUSE

of your love for and interest in the boys  
and girls of this State

BECAUSE

of your religious activities and your in-  
terest in education

BECAUSE

of the institution which you founded to  
better prepare us for life

BECAUSE

of the cherished memories which you  
are directly responsible for

WE DEDICATE

this Seventh Volume of the ENOTAH  
to you as a manifestation of our appre-  
ciation.

—BOB LANCE, Editor



## FOREWORD AND THEME

Fiftieth Anniversary—what an epochal year in the history of any school. This volume is using a theme which denotes that Young Harris College in its 50th year is, figuratively speaking, sailing on. As you turn the pages of this book in later years we sincerely hope that the memories brought back will make your loyalty to and appreciation of this, your Alma Mater, even deeper. If this book serves to bring back memories, to remind you of old friendships, to make more familiar old familiar scenes, to bring a joy to your heart not experienced since your graduation; if it serves to inspire you to lead a nobler life, to make you a man among men—then we, the staff, feel that our work is well done.

# C O N T E N T S

---

Book I . . . . . THE SCHOOL

Book II . . . . . CLASSES

Book III . . . . . ATHLETICS

Book IV . . . . . ACTIVITIES

Book V . . . . . FEATURES



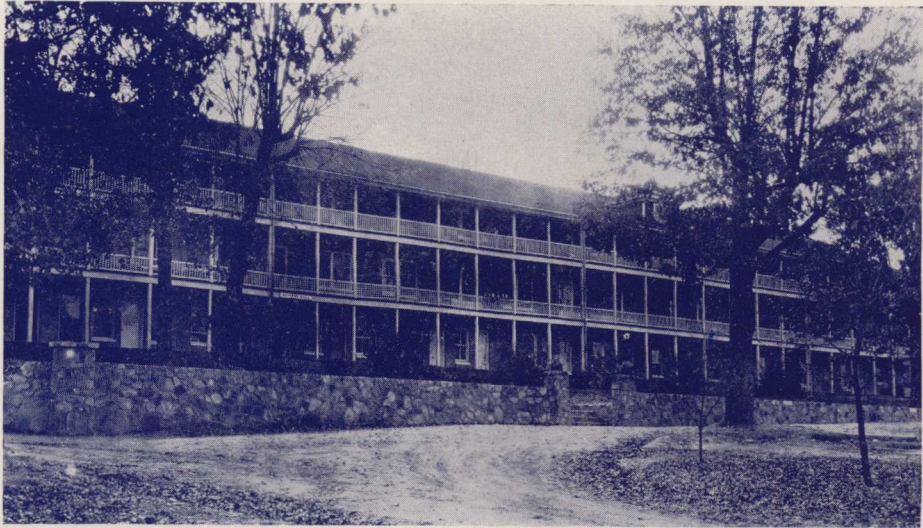
# The School



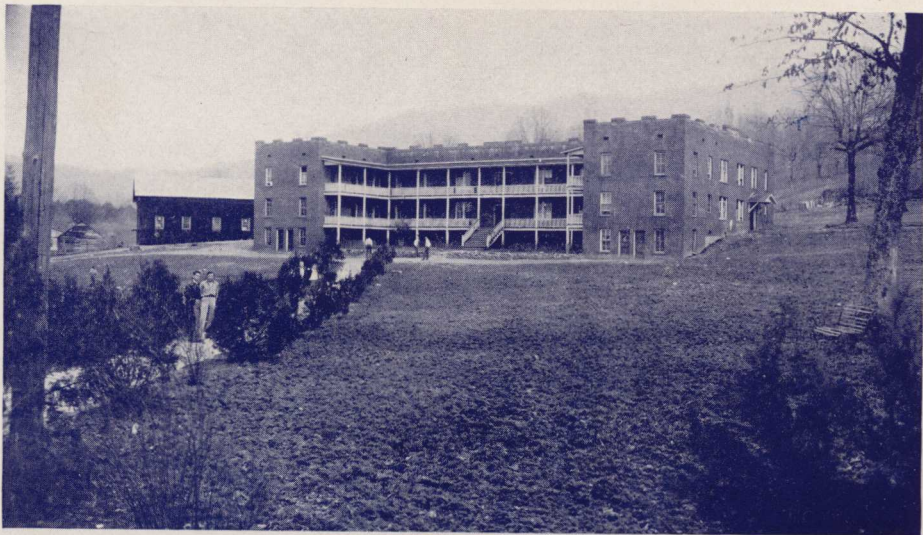
The Oak Covered Campus



View of Campus from Peel



Appleby Hall



Peel Hall



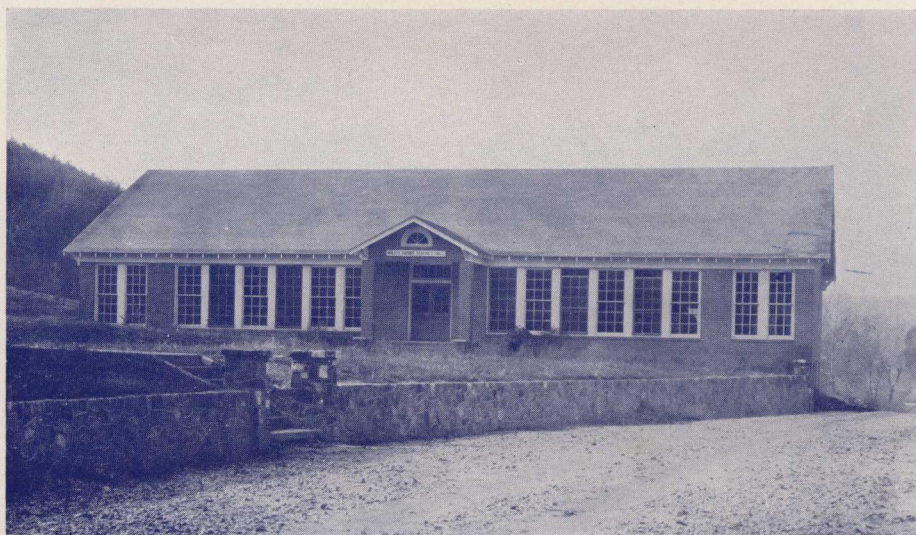
Hamby Hall



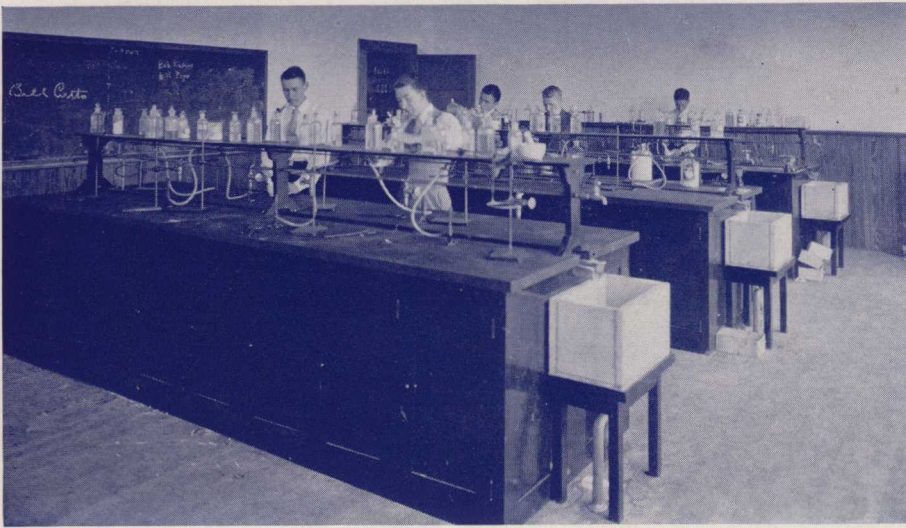
The Library



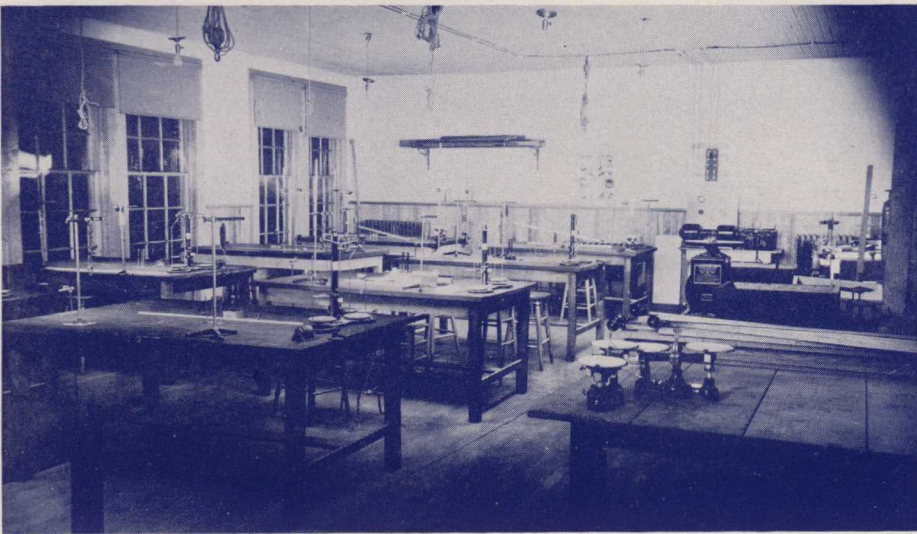
Administration Building



Science Hall



Chemistry Laboratory



Physics Laboratory

FACULTY



T. J. LANCE  
*President*



F. M. HUNTER  
*Dean*



J. W. SHARP  
*Registrar*



MRS. J. A. SHARP  
*Matron*



S. B. TOLAR  
*Physics*



HAL DOBBS  
*Chemistry*



LESLIE JONES  
*Education and  
Psychology*

\*L. C. ATKINS  
*Business Manager*

\*No picture.

FACULTY



J. C. CAMP  
*English*



VERDIE MILLER  
*Mathematics and  
English*



WILMA COLEMAN  
*Academy English  
Expression*



LAURA DE SHIELDS  
*French*



W. S. MANN  
*Mathematics*



W. L. DANCE  
*English and Latin*



HUBERT BUTT  
*Principal of  
Academy*

FACULTY



MARY WILL WAKEFORD  
*Academy French,  
Commercial Training*



E. L. ADAMS  
*Academy Mathematics,  
Bible*



MARGARET WILLIS  
*Academy Chemistry,  
Academy History*



EUGENIA WRIGHT  
*Music*



MRS. S. B. TOLAR  
*Librarian*



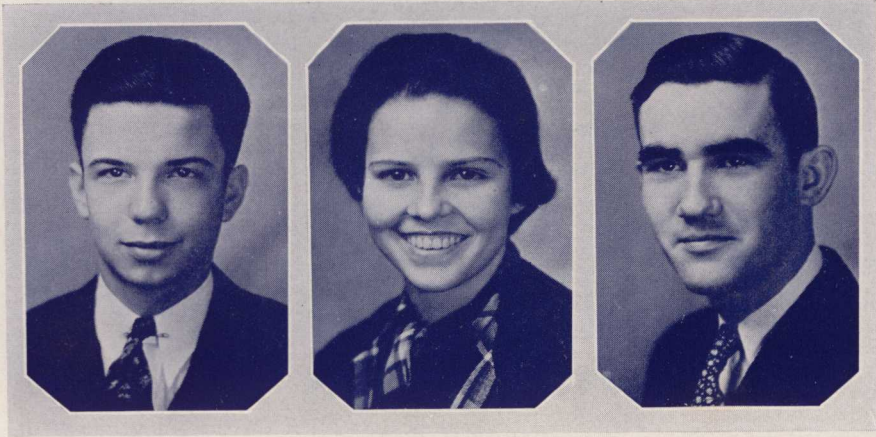
C. D. READ  
*Pastor,  
Religious Education*



IVA GREENE  
*Art*



# Classes



LANCE  
*President*

EBRITE  
*Secretary*

NELSON  
*Vice-President*

# Seniors

SENIORS

WENDALL ADAIR  
RUTLEDGE, GA.  
*"The counsel you would have another keep, first keep thyself."*  
Y. H. D. S.



HAZEL ARMOUR  
WASHINGTON, GA.  
*"Build for character, not for fame."*  
Phi Delta; B. S. U.

CECIL ADAMS  
ELBERTON, GA.  
*"Maidens must be seen and not heard."*  
Susan B; Life Service Band.



ANDY BEAM  
BLUE RIDGE, GA.  
*"No one was ever ruined by taking a profit."*  
Phi Chi; Basketball, '35, '36; Art Club; C. W. G., '35.

ELSIE M. ANDREWS  
MACON, GA.  
*"Of temper amorous as the first of May."*  
Susan B.



LYNDA BEATTY  
MAYSVILLE, GA.  
*"Act well your part, there all honour lies."*  
Susan B; Life Service Band.

JUNE ANTHONY  
CENTER, GA.  
*"Who so blushes is guilty."*  
Phi Delta.



FANNIE LEE BOYD  
ALPHARETTA, GA.  
*"As merry as the day is long."*  
Susan B; Student Volunteers; Life Service Band; C. W. G., '35.

WILLIAM H. APPLEBY, JR.  
NORFOLK, VA.  
*"Rare is their speech, and great their passion for silence."*  
Phi Chi; Enotah Echoes, Business Manager; International Relations Club; Orchestra; Washington Birthday Speaker, '36; Forensic Club; Intercollegiate Debater, '36.



LAWTON E. BREWER, JR.  
BLACKSHEAR, GA.  
*"A strangely wise man."*  
Y. H. D. S., President Fall Quarter, '36; Student Council, Sergeant at Arms, '36; Intercollegiate Debater, '36; Forensic Club.

SENIORS

G. B. BROGDON  
UVALDA, GA.

*"To be unlucky is poverty."*  
Phi Chi; International Relations  
Club; Music Club.



HAZEL CASSELS  
CAIRO, GA.

*"In sex a woman, in abilities a  
man."*  
Phi Delta; Student Council, '36;  
Music Club; Basketball Manager,  
'36; Phi Delta, President Spring  
Quarter, '36.

DOYLE BUTLER  
MARIETTA, GA.

*"Blessed be he who first invented  
sleep."*  
Phi Chi; Supreme Court, '36.



TOM CHEATHAM  
MAYSVILLE, GA.

*"Leave silence to the Saints, I am  
but human."*  
Phi Chi; Dramatic Club; Music  
Club; International Relations Club;  
Choir; Intercollegiate Debater, '36;  
Forensic Club.

CHARLIE BYRD  
ELBERTON, GA.

*"Ability wins the esteem of all."*  
Phi Chi, Vice-President Winter  
Term, President Spring Term, '36;  
Dramatic Club; ENOTAH Staff, '36;  
International Relations Club.



LOIS CATHEY  
MOUNTAIN CITY, GA.

*"Sweetness is an everlasting charm."*  
Susan B.

RUTH BYRD  
ELBERTON, GA.

*"Thy actions to thy words accord."*  
Phi Delta; Enotah Echoes Staff,  
'36; Student Council, '36; Dra-  
matic Club, President Spring Quar-  
ter, '36; Phi Delta, Vice-President  
Spring Quarter.



FREDERICK COOK  
MONTROSE, GA.

*"A little rebellion now and then is  
a good thing."*  
Phi Chi; Washington Birthday  
Speaker, '34; International Rela-  
tions Club.

JOHN CASH  
WARRENTON, GA.

*"The half is better than the  
whole."*  
Y. H. D. S.; ENOTAH Staff, '36;  
Art Club; C. W. G., '35.



ELIZABETH CORVETTE  
COLUMBUS, GA.

*"I care not for work or play, but  
just a heap of loving."*  
Phi Delta; Music Club; Choir;  
Dramatic Club.

SENIORS

WILLIAM LUCIUS CRAWFORD  
 MACON, GA.  
*"Sometimes I sit and think, some-  
 times I just sit."*  
 Y. H. D. S.



BOB EDWARDS  
 BUCHANAN, GA.  
*"Sing and be merry, life is but a  
 gentle breeze."*  
 Y. H. D. S.; Enotah Echoes Staff,  
 '36; Choir; Music Club; Interna-  
 tional Relations Club.

FRED DAVIDSON  
 CLEVELAND, GA.  
*"You will live more easily if you  
 have not a wife to maintain."*  
 Y. H. D. S.; Basketball, '36; C.  
 W. G., '35.



RICHARD DONALD ENSLEY  
 ADEL, GA.  
*"The victory of success is half won  
 when one gains the habit of work."*  
 Y. H. D. S.

ALBA J. DOVER  
 ELLIJAY, GA.  
*"I ain't dead, but I'm speechless."*  
 Phi Chi.



EUNICE ERWIN  
 MACON, GA.  
*"Let all things be done decently  
 and in order."*  
 Phi Delta; Intercollegiate Debater,  
 '35; Forensic Club, Vice-President,  
 '36.

CARIBEL DRISKELL  
 CUMMING, GA.  
*"Life is but thought."*  
 Susan B; Life Service Band;  
 B. S. U.



CHARLES A. ESTES  
 GAY, GA.  
*"T'by money perish with thee."*  
 Y. H. D. S.; B. S. U.; International  
 Relations Club.

MARY ROSETTA EBRITE  
 LAGRANGE, GA.  
*"Ready and willing, most capable,  
 too; always on hand her part to do."*  
 Phi Delta, Vice-President Fall Term,  
 '35, President Winter Term, '35,  
 Fall and Winter Terms, '36; Dra-  
 matic Club, Vice-President Fall  
 Term, '35, President Winter Term,  
 '35, Fall Term, '36; Girls' "Y"  
 Club, President '35, '36; Student  
 Council, '34, '35, '36; Music Club;  
 Choir; Cheer Leader, '34, '35, '36;  
 Basketball, Manager, '35; C. W. G.,  
 '34, '35.



JACK PRESTON EUBANKS  
 MACON, GA.  
*"Every man has his own style, like  
 his own nose."*  
 Phi Chi; Washington Birthday  
 Speaker, '34; Dramatic Club; C.  
 W. G., '34; International Relations  
 Club; ENOTAH Staff, '36; Student  
 Council, '35, '36; B. S. U.

SENIORS

JENNIE JO EZZARD  
DALTON, GA.

*"But I, in love, was mute and still."*  
Phi Delta.



BEVERLY GARY  
MAYSVILLE, GA.

*"Milk the cow which is near, why pursue the one which runs away?"*  
Phi Chi; International Relations Club; Baseball, Manager, '36; Phi Chi, Vice-President Spring Quarter, '36.

VIRGINIA FORSYTH  
CAIRO, GA.

*"Tis merry when gentle folks meet."*

Susan B; Music Club; Art Club; Student Volunteers.



CLARA BELLE GENTRY  
MORGANTON, GA.

*"Love truth but pardon error."*  
Phi Delta.

WILLIE MAE FOSTER  
CLARKSVILLE, GA.

*"Let your precept be, 'Be Easy'."*  
Susan B; Basketball, '35, '36; Student Council, '35; "Y" Club; C. W. G., '35.



EDNA GILBERT  
PENDERGRASS, GA.

*"Well done is better than well said."*  
Susan B; Life Service Band, Student Volunteers.

BOOKER GARRARD  
WASHINGTON, GA.

*"Content is happiness."*  
Y. H. D. S.; C. W. G., '35.



VERNELLE HAGAN  
LOGANVILLE, GA.

*"Their strength is to sit still."*  
Susan B; Life Service Band; B. S. U.; Student Volunteers.

RUTH GARRARD  
WASHINGTON, GA.

*"To youth I have but three words of counsel—'Work, work, work'."*  
Susan B; C. W. G., '35; Life Service Band; B. S. U.; Dormitory Council, Vice-President, '36; Art Club, President Fall and Winter Terms, '36.



WILLIAM KILPATRICK HALL  
ATLANTA, GA.

*"What I have written, I have written."*  
Y. H. D. S.; Enotah Echoes, Editor, '36; International Relations Club; C. W. G., '34; Washington Birthday Speaker, '36.

SENIORS

HUBERT HARDY  
ATHENS, GA.  
*"No news is better than evil news."*  
Phi Chi; Basketball, '34.

G. WILBUR HARPER  
JACKSON, GA.  
*"Music has charms alone for the peaceful mind."*  
Y. H. D. S.; Choir; Music Club.

MACK VERNON HARPER  
AMBROSE, GA.  
*"No work, no recompense."*  
Phi Chi; Basketball, '34.

MAMIE LOU HARRIS  
WRIGHTSVILLE, GA.  
*"Life without vanity is almost impossible."*  
Susan B, President Fall Quarter, '36; Life Service Band.

SARAH GAY HICKS  
ADEL, GA.  
*"Virtue never grows old."*  
Phi Delta; Life Service Band; Student Volunteers.



ALFRED C. HILDERBRAND, JR.  
ATLANTA, GA.  
*"I wish you all the joys that you could wish."*  
Phi Chi.



LEVI HISE  
CHICKAMAUGA, GA.  
*"By pre-eminence."*  
Phi Chi, Vice-President Fall Quarter, '35; Champion Debater, '36; President Student Body; Forensic Club, President, '36; Intercollegiate Debater, '35; Clay Medal Speaker, '35; Washington Birthday Speaker, '35; Dramatic Club; International Relations Club; Baseball, '35.



ELIZABETH HODGES  
ATLANTA, GA.  
*"Be content to seem what you really are."*  
Susan B, Vice-President Spring Quarter, '36; Life Service Band; Enotah Echoes Staff, '36; Dramatic Club; Basketball, '36; Student Volunteers; C. W. G., '35; B. S. U.



LAMAR HOLLOWAY  
VIENNA, GA.  
*"True he can talk, yet he is no speaker."*  
Phi Chi; International Relations Club.



MARION HUNTER  
YOUNG HARRIS, GA.  
*"If at first you don't pass, try, try again."*  
Phi Delta.

SENIORS

JEFF HURST  
FORT GAINES, GA.

"Kindness is not to be repented of."  
Y. H. D. S., Vice-President Winter Quarter, '36; B. S. U., Vice-President Fall Quarter, President Spring Quarter, '36; Student Council, '36; Basketball, '35, '36; Baseball, '35; Tennis Champion, '36.



BOB LANCE  
YOUNG HARRIS, GA.

"Know thyself."

Phi Chi; Student Council, '34; Solicitor General, '35, '36; President Academy Senior Class, '34; College Freshmen, '35; College Seniors, '36; Intercollegiate Debater, '34; Champion Debater, '35, '36; Phi Chi, President Fall Quarters, '35, '36; ENOTAH Staff, '34, '35, Editor '36; Clay Medal Speaker, '34; Tennis Team, '35; Dramatic Club; Forensic Club; International Relations Club; Phi Chi Anniversary, '36.

ALLEN V. JOHNSON  
CHATTAHOOCHEE, FLA.

"Those having torches will pass them on to others."

Y. H. D. S.; Ministerial Association, President Winter Quarter, Vice-President Fall Quarter, '36; Student Volunteers; International Relations Club; B. S. U.



HILMA LAY  
MAYSVILLE, GA.

"True worth needs no interpreter."

Susan B; Life Service Band, Vice-President Winter Quarter, '36; Student Volunteers; B. S. U.

SYLVESTER JONES  
GAINESVILLE, GA.

"Rest, rest perturbed spirit."

Phi Chi, President Winter Quarter, '36; Supreme Court, '36; Intercollegiate Debater, '36; Forensic Club; Basketball, '35, Captain '36; International Relations Club."



JOHN ALEX LINDSEY  
DANBURG, GA.

"Brevity is the soul of wit."

Phi Chi.

MARY LOWE KELLEY  
BLAIRSVILLE, GA.

"Smiling she lives and calls life pleasure."

Phi Delta.



JEWELL LOFTON  
PINEHURST, GA.

"One must know her to love her."

Susan B; Life Service Band; Student Volunteers, Vice-President Winter Quarter, '36.

BILL LANCE  
GAINESVILLE, GA.

"I am always at a loss to know how much to believe of my own stories."

Phi Chi.



MARCUS MASHBURN  
CUMMING, GA.

"Laugh and grow fat."

Phi Chi.

SENIORS

EVELYN MAUNEY  
CLEVELAND, GA.

*"A quiet, shy, and unobtrusive maiden."*

Susan B; C. W. G., '35; B. S. U.;  
Student Volunteers; Art Club.



SARA McWHORTER  
ROYSTON, GA.

*"She is just the quiet kind, whose nature never varies."*

Susan B; Student Council, '36;  
Student Volunteers.

NELL MAXWELL  
ELBERTON, GA.

*"Such a deal of scimble, scamble stuff."*

Phi Delta; Art Club; Life Service  
Band; Student Volunteers; Basket-  
ball, '36; C. W. G., '35.



ELLEN MERRIT  
MACON, GA.

*"Idle as a painted ship upon a painted sea."*

Phi Delta.

JOHN D. McCORD, JR.  
ST. MARYS, GA.

*"Be sure you are right, then go ahead."*

Y. H. D. S.



DEAN MILTON  
MANSFIELD, GA.

*"I trimm'd the lamp, consum'd the midnight oil."*

Y. H. D. S.; International Relations  
Club, Student Volunteers.

HELEN McELHANNON  
NICHOLSON, GA.

*"Oh, may Fortune be so good as to save me from Old Maidenhood."*

Phi Delta; Student Volunteers.



EUNICE MARIE MIZE  
AUGUSTA, GA.

*"Unconscious humor."*

Phi Delta; Art Club.

BILL McELREATH  
KINGSLAND, GA.

*"Speech is a mirror of action."*

Y. H. D. S., President Fall Quarter, '36; Champion Debater, '36; Student Council, '36; Forensic Club; Cheer Leader, '36; International Relations Club; Baseball, '35; Dramatic Club.



EUNICE MOORE  
CEDAR GROVE, GA.

*"She is a winsome, wee thing."*

Susan B.

SENIORS

LAMBUTH NELSON  
JACKSONVILLE, FLA.

*"From seeing comes learning."*

Phi Chi, Champion Debater, '36; Student Council, '36; Forensic Club; Music Club, Vice-President, '36; Dramatic Club; International Relations Club; C. W. G., '35.



GARLAND PITTS  
NEWBORN, GA.

*"We use great plainness of speech."*

Y. H. D. S.; Student Council, '36; C. W. G., '35.

OMEGA NORRIS  
EVANS, GA.

*"What sweet delight a quiet life affords."*

Phi Delta; Life Service Band; Student Volunteers; Music Club; C. W. G., '35.



RUTH PUCKETT  
BUFORD, GA.

*"Self-respect—the cornerstone of all virtue."*

Phi Delta; B. S. U.

MUREL O'GRADY  
FOLEY, FLA.

*"Conversation seems to always tire me."*

Phi Delta; Dramatic Club; Art Club, Vice-President Winter Quarter, '36.



DAN ROBERTS  
DOUGLAS, GA.

*"It is the part of a wise man sometimes to be silent."*

Phi Chi; Baseball, '35; Basketball, Manager, '36; C. W. G., '35.

HELEN OLSEN  
TAMPA, FLA.

*"Softly speak and sweetly smile."*

Phi Delta; ENOTAH Staff, '36.



VERNARD E. ROBERTSON  
GUYTON, GA.

*"Man was produced to do good deeds."*

Y. H. D. S.; Supreme Court, '36; Forensic Club; Intercollegiate Debater, '36; Ministerial Association, President Fall Quarter, '36; Clay Medal Speaker, '35; Student Volunteers; B. S. U.; Dramatic Club; Washington Birthday Speaker, '36; Y. H. D. S., President Spring Quarter, '36; International Relations Club, President Spring Quarter, '36.

DAISY PATTERSON  
TATE, GA.

*"In notes by distance made more sweet."*

Susan B; Choir; Life Service Band; Student Volunteers; Music Club.



JAMES ROSSER  
LUXOMNI, GA.

*"So sweetly she bade me adieu I thought that she bade me return."*

Phi Chi; C. W. G., '35.

SENIORS

FLORENCE SATTERFIELD  
TIGNALL, GA.

*"God is for men and religion for women."*

Susan B; Life Service Band, President Fall Quarter, '36; Student Volunteers; B. S. U.



EMORY K. SULLIVAN  
HOMER, GA.

*"Study to be quiet."*

Y. H. D. S.

FRANCES SLAUGHTER  
ORLANDO, FLA.

*"Friendship's a noble name; 'tis love refined."*

Phi Delta, Vice-President Winter Term, '36; Dramatic Club; Art Club, Vice-President Fall Term, '36; Student Council, '36; ENOTAH Staff, '36.



WILLIS A. SUTTON, JR.  
ATLANTA, GA.

*"Of all noises, I think music the least disagreeable."*

Y. H. D. S., Champion Debater, '36; Clay Medal Winner, '35; Music Club; *Enotah Echoes* Staff, '36; Dramatic Club; Forensic Club; Choir; International Relations Club.

CLAYTON SMITH  
GAINESVILLE, GA.

*"Tobacco is the tomb of love."*

Phi Chi.



MARY KATHRYN TABOR  
YOUNG HARRIS, GA.

*"All women are ambitious naturally."*

Susan B, Vice-President Fall Term, '36; *Enotah Echoes* Staff, '36; Music Club, President, '36; Intercollegiate Debater, '35; Forensic Club; Susan B, President Spring Quarter, '36.

JOHN WRIGHT SMITH  
EDISON, GA.

*"Moderation is best."*

Y. H. D. S., Vice-President Fall Quarter, '36; Champion Debater, '36; Intercollegiate Debater, '35; Anniversarian, '36; Vice-President Student Body, '36; Forensic Club; International Relations Club.



JANET TRIBBLE  
GRAYSON, GA.

*"The religion of one seems madness to another."*

Susan B; Life Service Band, President Winter Quarter, '36; Student Volunteers; B. S. U.; Basketball, '36.

JOE T. SNELL  
JESUP, GA.

*"When in doubt, keep on talking."*

Y. H. D. S.



GLADYS TRUSSELL  
WOODLAND, GA.

*"Do what you like."*

Susan B; Life Service Band; Student Volunteers.

SENIORS

JACK WALDREP  
FORSYTH, GA.

*"As the life is, so is the speech."*

Y. H. D. S.; Ministerial Association, Vice-President Winter Quarter, '36, President Spring Quarter, '36; Student Council, '36; Student Volunteers; International Relations Club; B. S. U.



LOUISE WILLIAMS  
EASTANOLLEE, GA.

*"Peace with honor."*

Susan B, President Winter Quarter, '36; Student Council, Spring Quarter, '35; Secretary Student Body, '36; Enotah Echoes Staff, '36; B. S. U.; Life Service Band.



ELLA B. WALLACE  
ATHENS, GA.

*"A light heart in a fat body ravishes not only the world, but the philosopher."*

Phi Delta; Student Volunteers; Art Club.



CLIFFORD F. WILSON  
BLUE RIDGE, GA.

*"It may be so, but it ain't all so."*

Phi Chi; C. W. G., '35.



RUTH WEHUNT  
HIGDAN'S STORE, GA.

*"A caress is better than a career."*

Phi Delta; Life Service Band; C. W. G., '35.



WILLIAM H. WILSON  
PHENIX CITY, ALA.

*"Earnest in purpose."*

Y. H. D. S.; Choir; Music Club.



LILLIE BELLE WELLS  
WATKINSVILLE, GA.

*"Be silent always when you doubt your sense."*

Susan B; Student Volunteers; Life Service Band, Vice-President Fall Quarter, '36; B. S. U.



ALLISON B. WINTERS  
GAINESVILLE, GA.

*"The steam that blows the whistle never runs the mill."*



CHARLES R. WILLIAMS  
NEWBORN, GA.

*"Let no one speak evil of anyone."*

Phi Chi; Ministerial Association; Student Volunteers; International Relations Club.

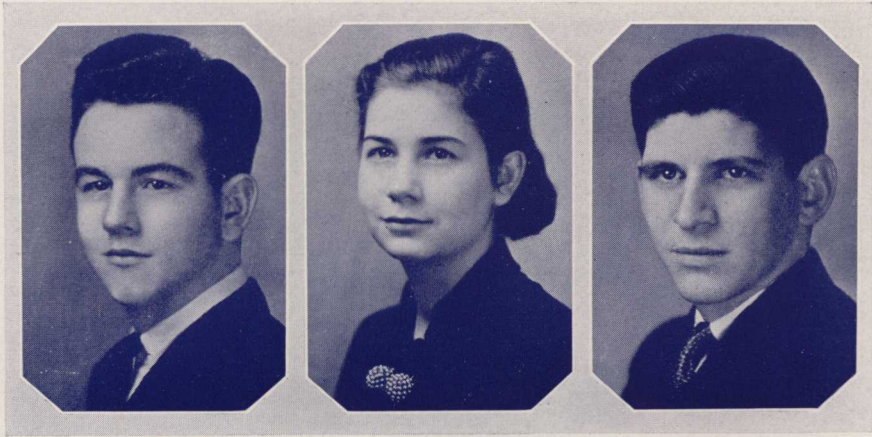


MAX WOOD  
GRAY, GA.

*"Silence, more musical than any song."*

Y. H. D. S., Vice-President Spring Quarter, '36; Washington Birthday Speaker, '36; Intercollegiate Debater, '36; Supreme Court, '36; Forensic Club.





BRUCE  
*President*

KENNEY  
*Vice-President*

SHERIDAN  
*Secretary*

DAN R. BRUCE  
Young Harris, Ga.  
*Y. H. D. S.*

MARTHA KENNEY  
Atlanta, Ga.  
*Phi Delta*

HENRY SHERIDAN  
Columbus, Ga.  
*Phi Chi*

Class of '37



JUNIORS

MINNIE FEW ADKINS

Stephens, Ga.

*Pbi Delta*

ANNE ALLEN

Washington, Ga.

*Pbi Delta*

HAZEL BENTON

Monticello, Ga.

*Pbi Delta*

EMILY BROWNE

Washington, Ga.

*Pbi Delta*

GEARY CALDWELL

Thomasville, Ga.

Y. H. D. S.

JOHN H. COLEMAN

Fort Gaines, Ga.

Y. H. D. S.

HAZEL MARION COLQUITT

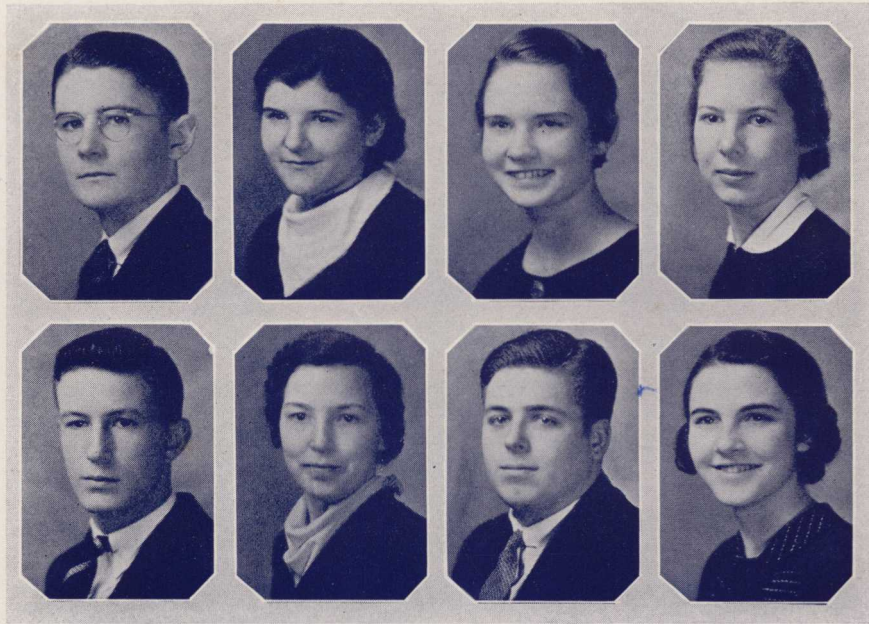
Crawford, Ga.

*Susan B*

WILL CROUCH

Gay, Ga.

*Pbi Chi*



JUNIORS

GLEN CRUMP  
Toccoa, Ga.  
Y. H. D. S.

ANNE DAVIS  
New York, N. Y.  
*Susan B*

DOROTHY DAVIS  
Lakemont, Ga.  
*Susan B*

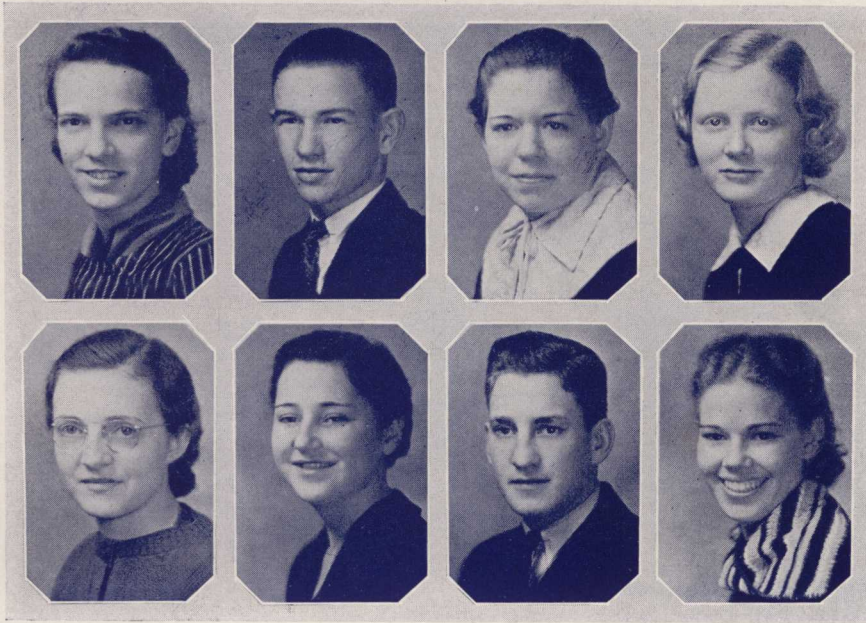
ELIZABETH EBERHARDT  
Gainesville, Ga.  
*Susan B*

JEFF GOLDEN  
Thomasville, Ga.  
Y. H. D. S.

VIRGIA LEE GRIFFIN  
Hiawassee, Ga.

JAMES B. GRIMES  
Spring Hill, Tenn.  
*Phi Chi*

RUTH HANSARD  
Alpharetta, Ga.  
*Susan B*



JUNIORS

SUE HARPER  
Douglasville, Ga.  
*Susan B*

ALTON RUDOLF HARRIS  
Chipley, Ga.  
*Phi Chi*

EMILY HIGHTOWER  
Nelson, Ga.  
*Phi Delta*

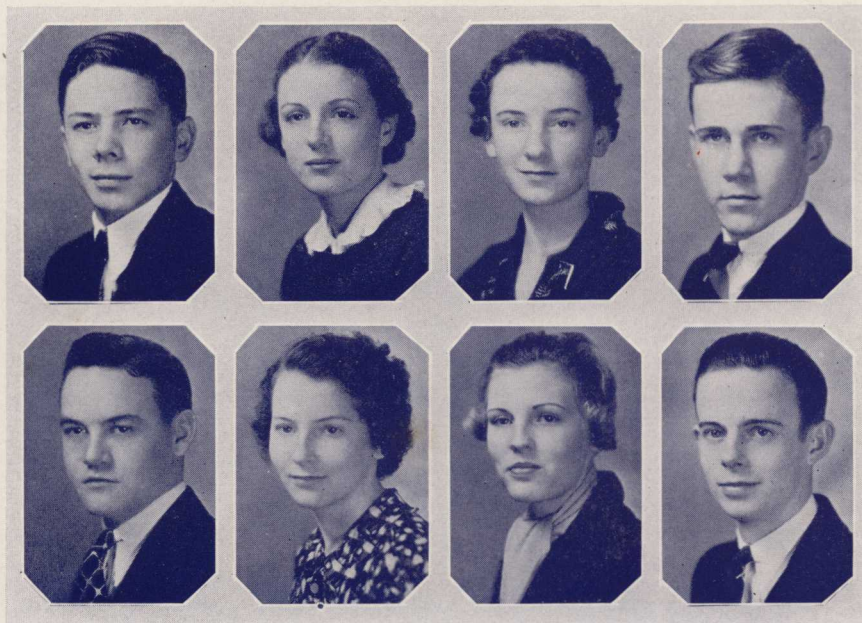
BERNICE HUTCHESON  
Kite, Ga.  
*Susan B*

HAZEL E. JOHNSON  
Jefferson, Ga.  
*Susan B*

BERNICE JONES  
Whigham, Ga.  
*Phi Delta*

BILL LOWERY  
Ocoee, Tenn.  
*Phi Chi*

JEAN F. MACRAE  
Homosassa, Fla.  
*Phi Delta*



JUNIORS

GEORGE E. MADDOX  
Alpharetta, Ga.  
*Phi Chi*

IDA MITCHELL  
Summerville, Ga.  
*Phi Delta*

ANNA RUTH MOZLEY  
Douglasville, Ga.  
*Susan B*

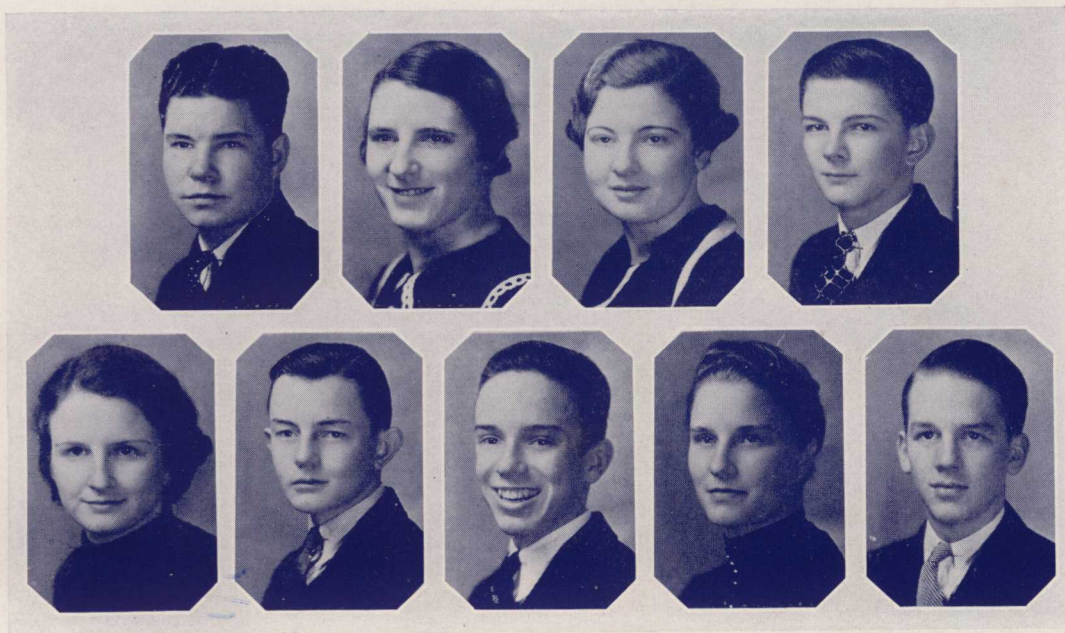
BILL NEEL  
Thomasville, Ga.  
Y. H. D. S.

J. D. PERSONS, JR.  
Monticello, Ga.  
*Phi Chi*

ETHEL RICKMAN  
Clayton, Ga.  
*Susan B*

JERRY RIVERS  
Lakeland, Ga.  
*Phi Delta*

ROBERT E. RUTLAND  
Turin, Ga.  
Y. H. D. S.



JUNIORS

ELIE SHAW  
Porterdale, Ga.  
*Phi Chi*

DORA D. SMITH  
Tiger, Ga.  
*Susan B*

HELEN M. SMITH  
Gainesville, Ga.  
*Phi Delta*

SAM SMITH  
Monticello, Ga.  
*Phi Chi*

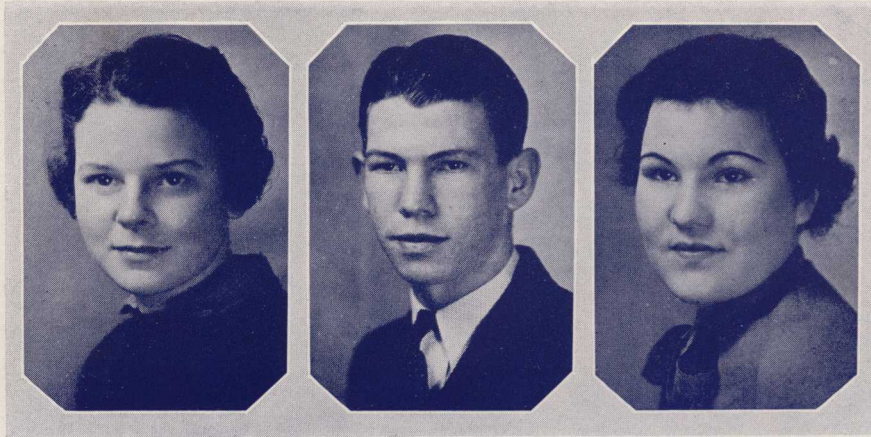
MARGARET STEWART  
Atlanta, Ga.  
*Susan B*

JAMES RICHARD STOTT  
Poulan, Ga.  
Y. H. D. S.

JOHN TURNER  
Thomasville, Ga.  
Y. H. D. S.

BILLYE WILKES  
Stephens, Ga.  
*Phi Delta*

SAM HOWARD WILLIAMS  
Columbus, Ga.  
*Phi Chi*



PARKER  
*President*

MILES  
*Vice-President*

BELL  
*Secretary*

# Academy Seniors



MARY L. BELL  
Halcyondale, Ga.  
*Susan B*



MARGARET B. PARKER  
Atlanta, Ga.  
*Phi Delta*



MARIE DOSS  
LaGrange, Ga.  
*Phi Delta*



HAZEL RAYMOND  
Columbus, Ga.  
*Phi Delta*



RUTH GAY  
Fort Gaines, Ga.  
*Phi Delta*



MARTHA THAXTON  
Griffin, Ga.  
*Phi Delta*



BALLARD IRWIN  
Atlanta, Ga.  
*Phi Chi*



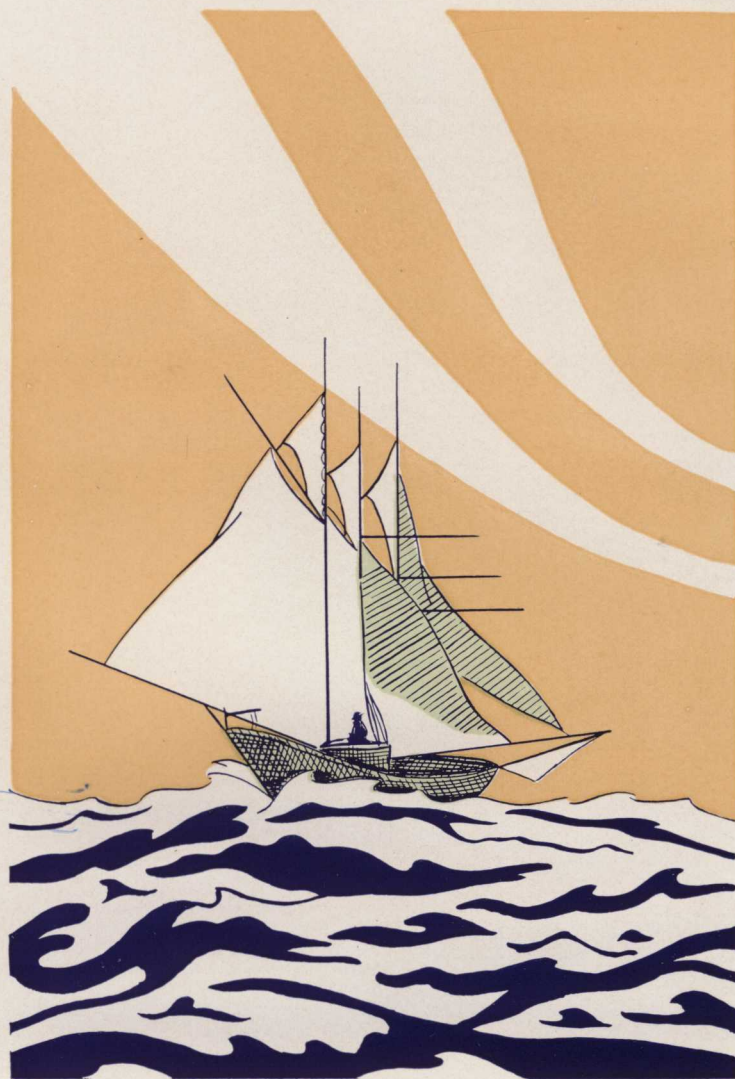
JULE YOUNG  
Eatonton, Ga.  
*Phi Delta*



VIRGINIA LUKE  
Atlanta, Ga.  
*Phi Delta*



JAMES A. ZAMBOUNIS  
Atlanta, Ga.  
Y. H. D. S.



# Athletics



LESLIE JONES  
*Athletic Director*



W. L. DANCE  
*Basketball Coach*



MARY WILL WAKEFORD  
*Basketball Coach*



HUBERT BUTT  
*Baseball Coach*



*Cheer Leaders*

BOYS' BASKETBALL TEAM



LAIN

ROBERTS  
*Manager*

SHERIDAN

JONES  
*Captain*

BEAM

PADGETT

DANCE  
*Coach*

HURST

MADDOX

MILES

DAVIDSON

BRUCE

CRUMP

FORKNER

GIRLS' BASKETBALL TEAM



LUNSFORD

MITCHELL

BENTON

WHITLOCK

SNELL

RIVERS

HUGHES

TRIBBLE

HODGES

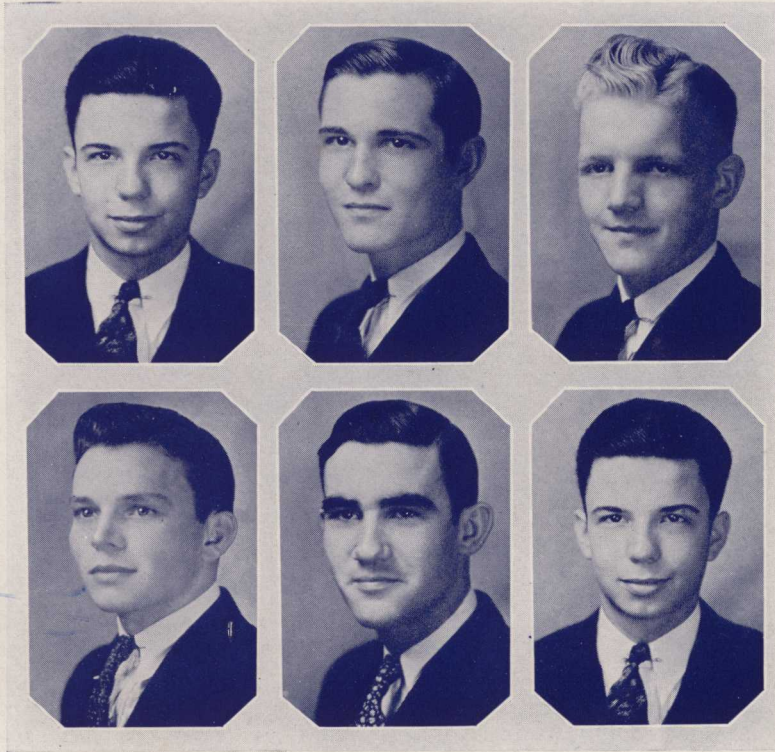
CASSELS

FOSTER

HUTCHESON



# Activities



LANCE  
*Fall Quarter*  
HISE

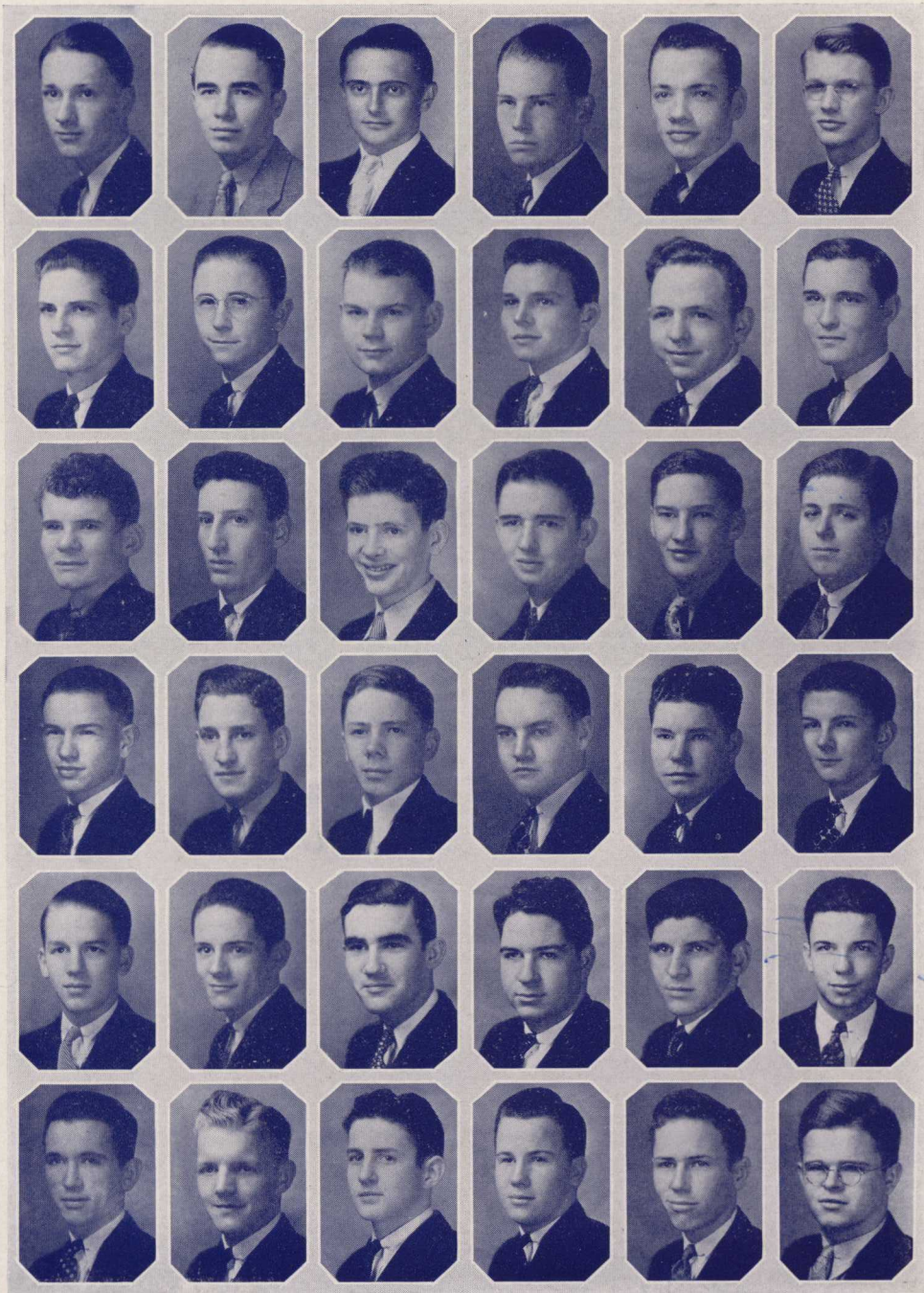
JONES  
*Winter Quarter*  
NELSON

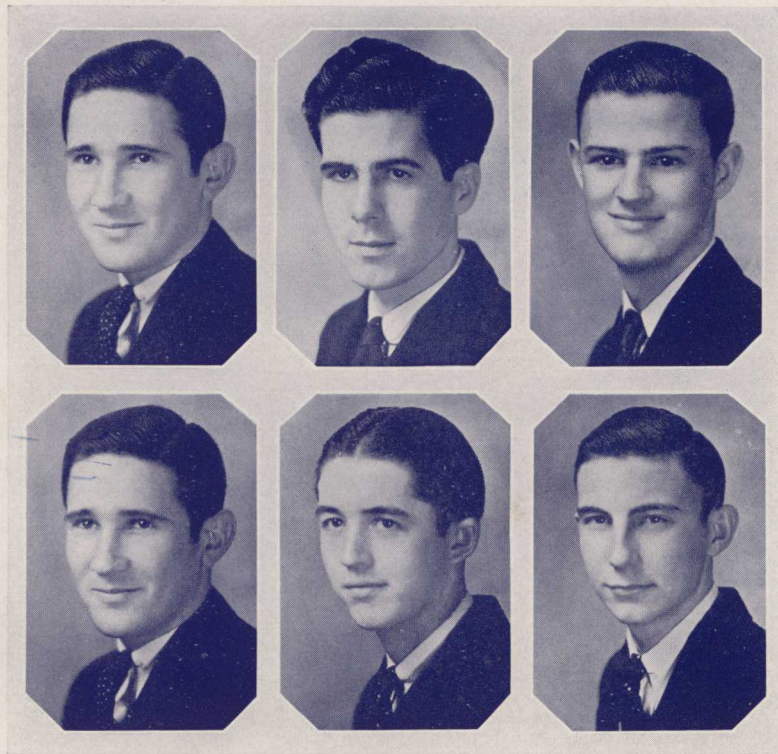
BYRD  
*Spring Quarter*  
LANCE

Officers

PHI CHI SOCIETY

Champion Debaters





McELREATH  
*Fall Quarter*

BREWER  
*Winter Quarter*

ROBERTSON  
*Spring Quarter*

McELREATH

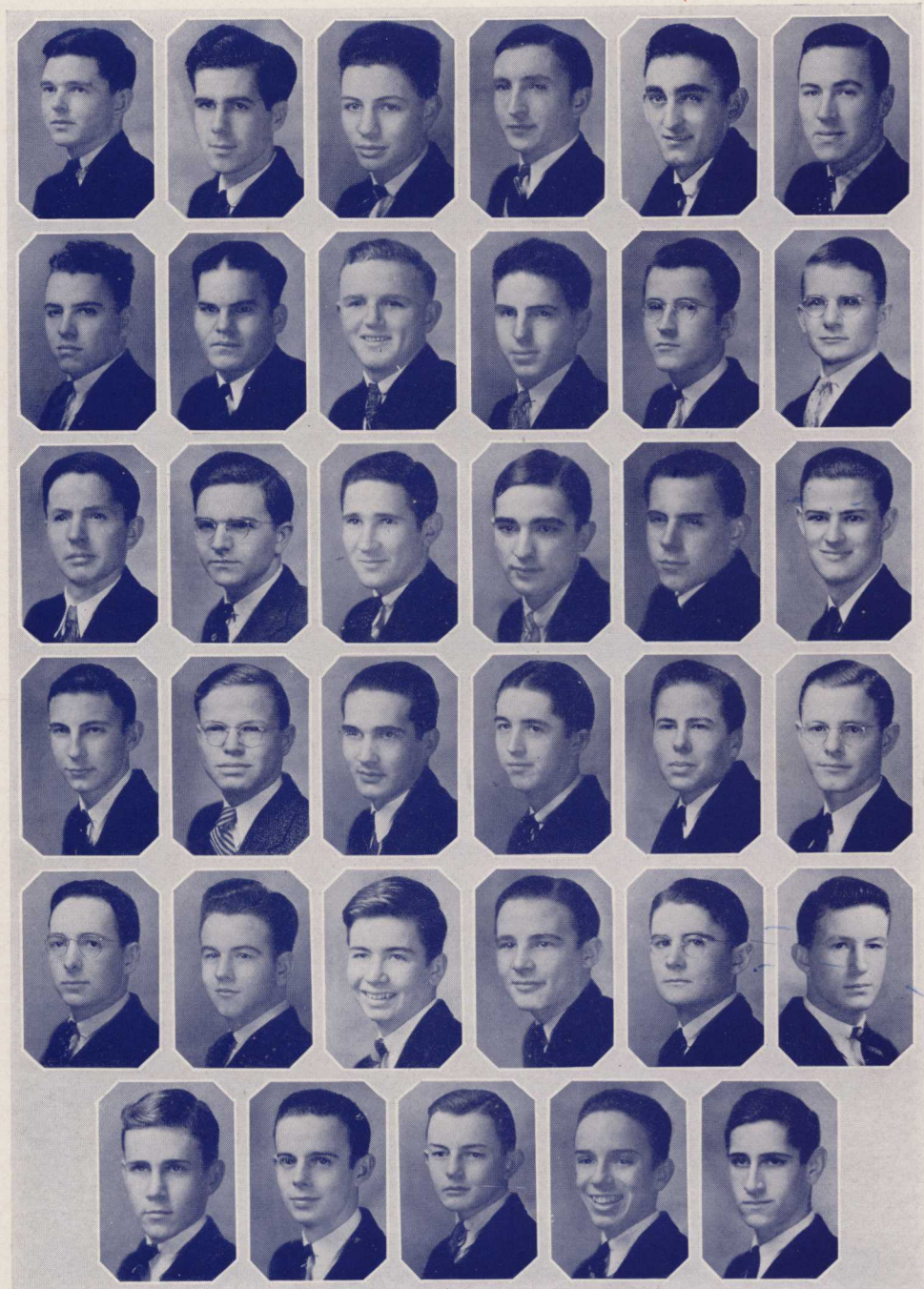
SUTTON

SMITH

Officers

YOUNG HARRIS DEBATING SOCIETY

Champion Debaters





SUSAN B. HARRIS SOCIETY

HARRIS  
*Fall Quarter*

WILLIAMS  
*Winter Quarter*

TABOR  
*Spring Quarter*

MASCOTS

JO SHARP  
*Susan B.*

BIM SHARP  
*Phi Delta*

PHI DELTA SOCIETY

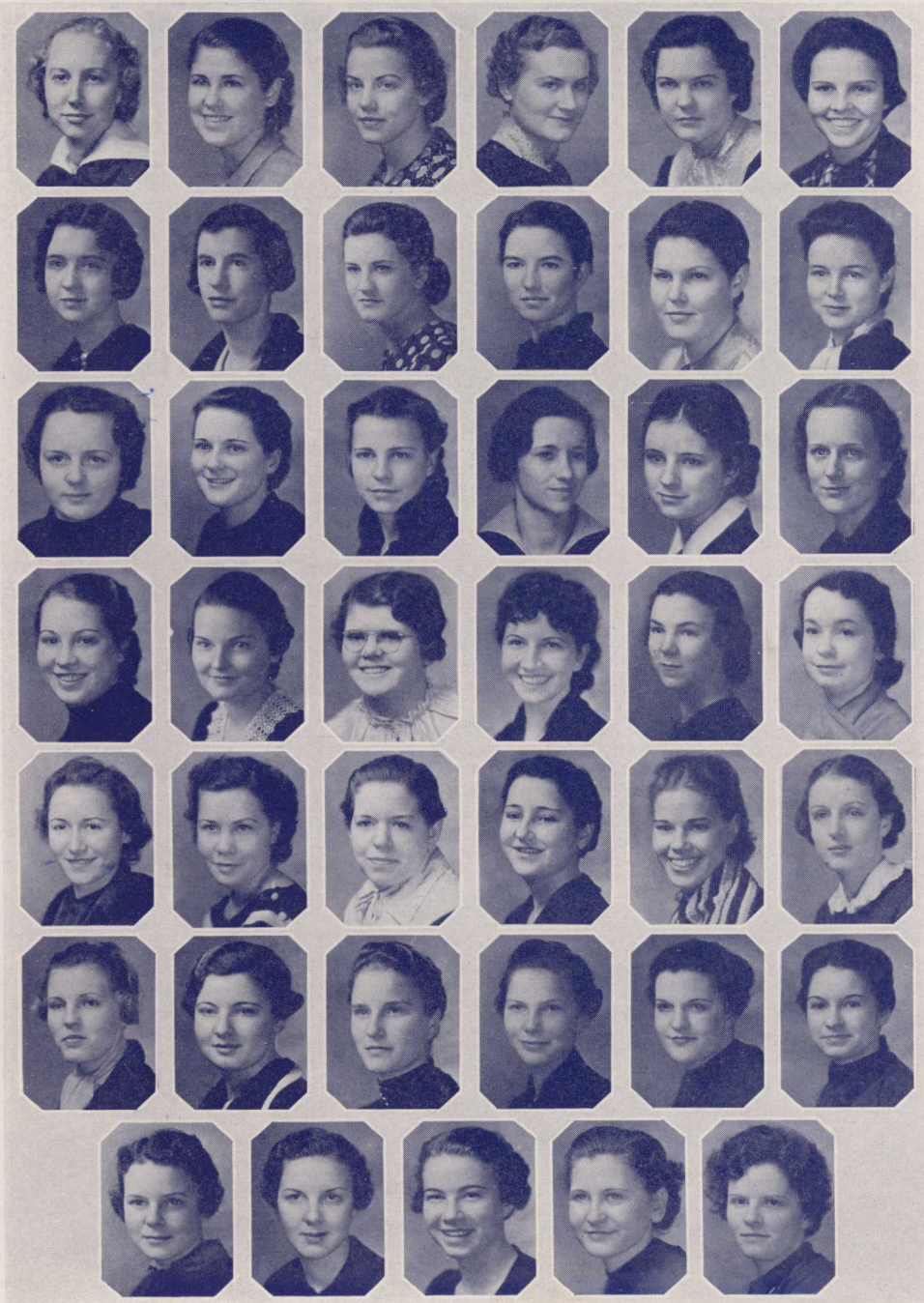
EBRITE  
*Fall and Winter  
Quarters*

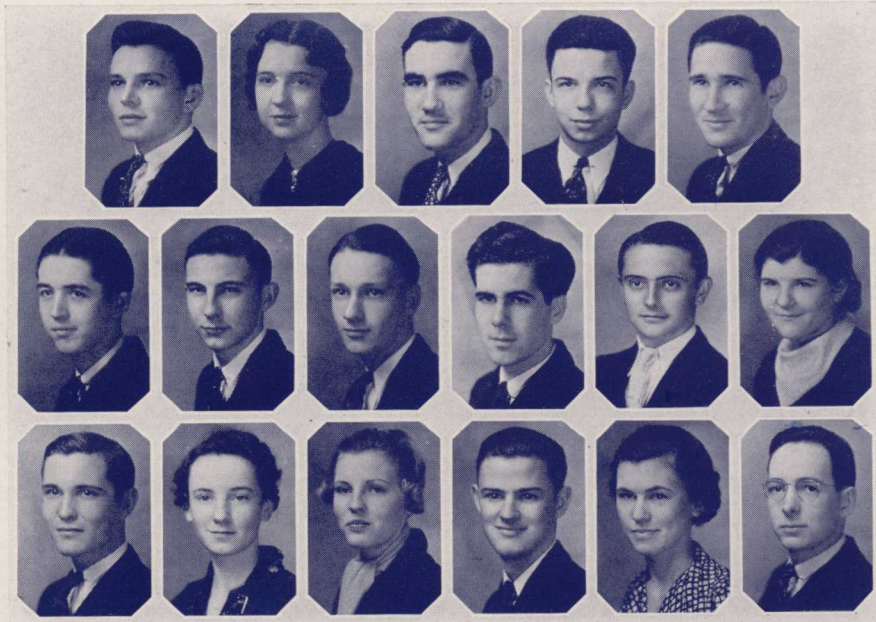
CASELS  
*Spring Quarter*

SUSAN B. HARRIS SOCIETY



PHI DELTA SOCIETY





FORENSIC CLUB

HISE  
*President*

ERWIN  
*Vice-President*

TOLAR  
*Coach*

PHI CHI CHAMPION DEBATERS

HISE

NELSON

LANCE

YOUNG HARRIS CHAMPION DEBATERS

McELREATH

SUTTON

SMITH

INTERCOLLEGIATE DEBATERS

APPLEBY

ERWIN

MOZLEY

BREWER

FARGASON\*

RIVERS

CHEATHAM

JONES

ROBERTSON

CRANSHAW\*

KEITH\*

TABOR

DAVIS

WOOD

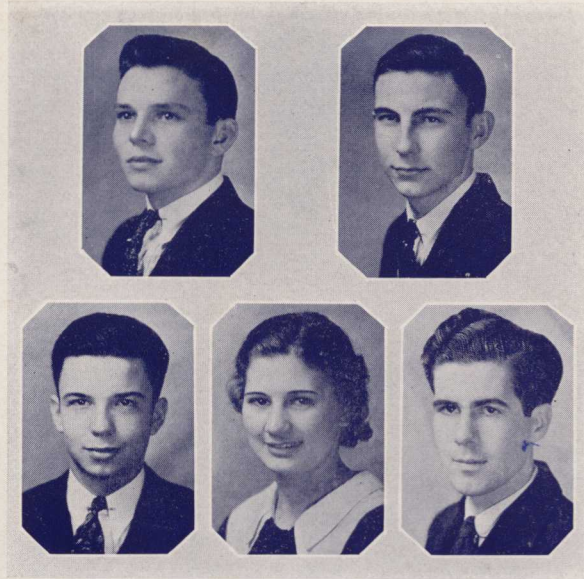
\*Not in picture.

MASQUERS DRAMATIC CLUB



Scenes from "Little Women"





HISE  
*President*

SMITH  
*Vice-President*

LANCE  
*Solicitor General*

WILLIAMS  
*Secretary*

BREWER  
*Sergeant-at-Arms*

STUDENT COUNCIL



SUPREME COURT



HUNTER  
*Chief Justice*

Associate Justices



SHARP



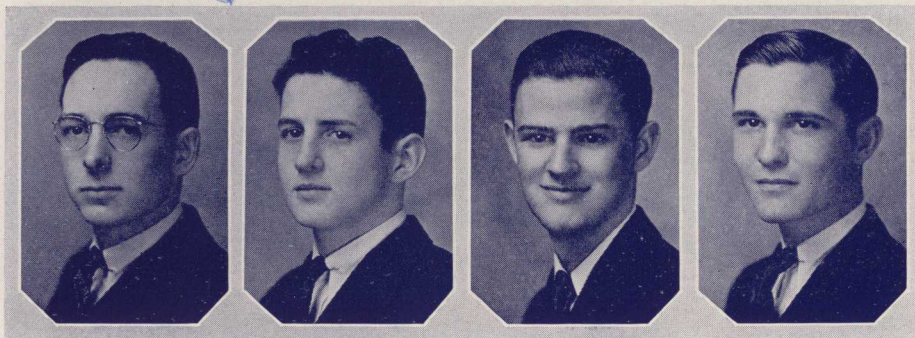
CAMP



JONES



BUTT



WOOD

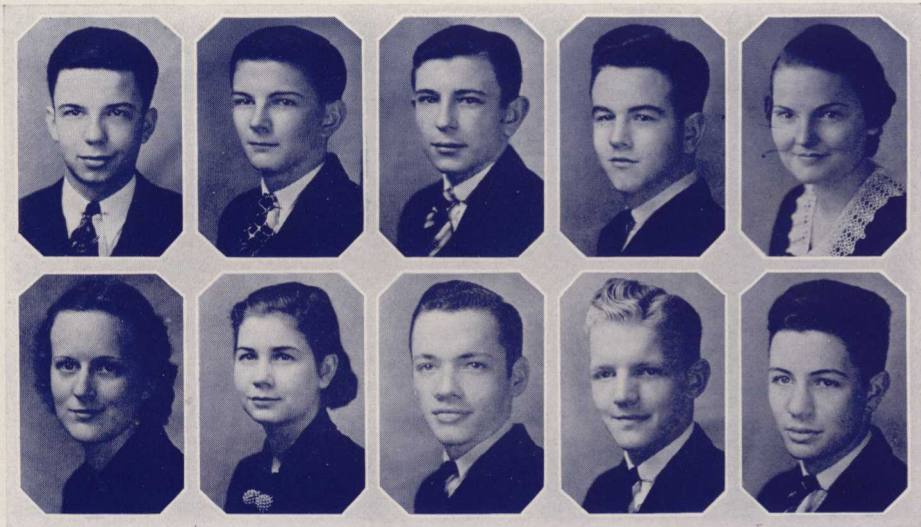
BUTLER

ROBERTSON

JONES

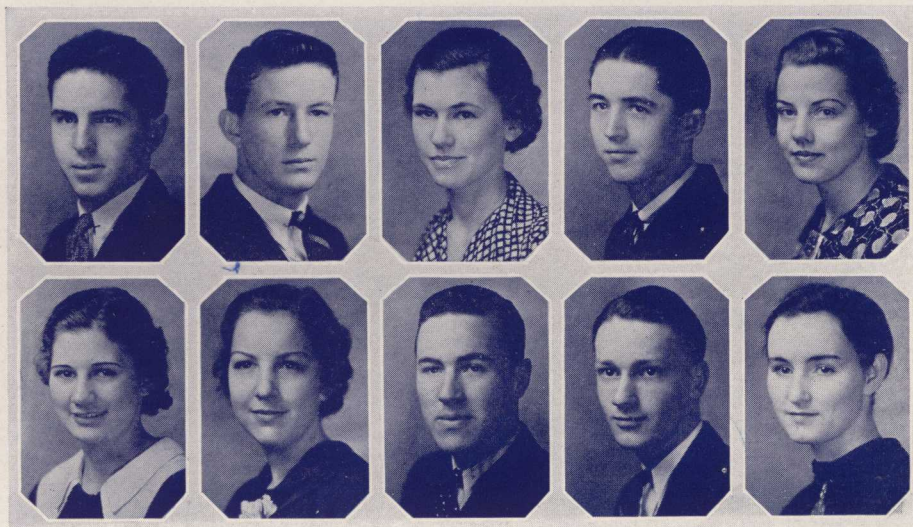
ENOTAH STAFF

- LANCE . . . . . *Editor-in-Chief*
- SMITH . . . . . *Assistant Editor*
- DANNER . . . . . *Business Manager*
- BRUCE . . . . . *Assistant Business Manager*
- SLAUGHTER . . . . . *Associate Editor*
- OLSEN . . . . . *Literary Editor*
- KENNEY . . . . . *Circulation Manager*
- EUBANKS . . . . . *Art Editor*
- BYRD . . . . . *Advertising Manager*
- CASH . . . . . *Sports Editor*



ENOTAH ECHOES STAFF

HALL . . . . .	<i>Editor-in-Chief</i>
GOLDEN . . . . .	<i>Assistant Editor</i>
TABOR . . . . .	<i>Associate Editor</i>
SUTTON . . . . .	<i>Associate Editor</i>
BYRD . . . . .	<i>Associate Editor</i>
WILLIAMS . . . . .	<i>Literary Editor</i>
McWHORTER . . . . .	<i>Typist</i>
EDWARDS . . . . .	<i>Sports Editor</i>
APPLEBY . . . . .	<i>Business Manager</i>
HODGES . . . . .	<i>Circulation Manager</i>



MUSIC CLUB

EUGENIA WRIGHT . . . . . *Director*

KAY TABOR . . . . . *President*

LAMBUTH NELSON . . . . . *Vice-President*

HAZEL CASSELS . . . . . *Secretary*



ART CLUB

FALL QUARTER

RUTH GARRARD . . . . . *President*

FRANCES SLAUGHTER . . . . . *Vice-President*

WINTER QUARTER

RUTH GARRARD . . . . . *President*

MUREL O'GRADY . . . . . *Vice-President*

SPRING QUARTER

VIRGINIA FORSYTH . . . . . *President*

NELL MAXWELL . . . . . *Vice-President*

IVA GREENE . . . . . *Director*



MINISTERIAL ASSOCIATION

FALL QUARTER

ROBERTSON . . . . . *President*

KELLEY . . . . . *Vice-President*

WINTER QUARTER

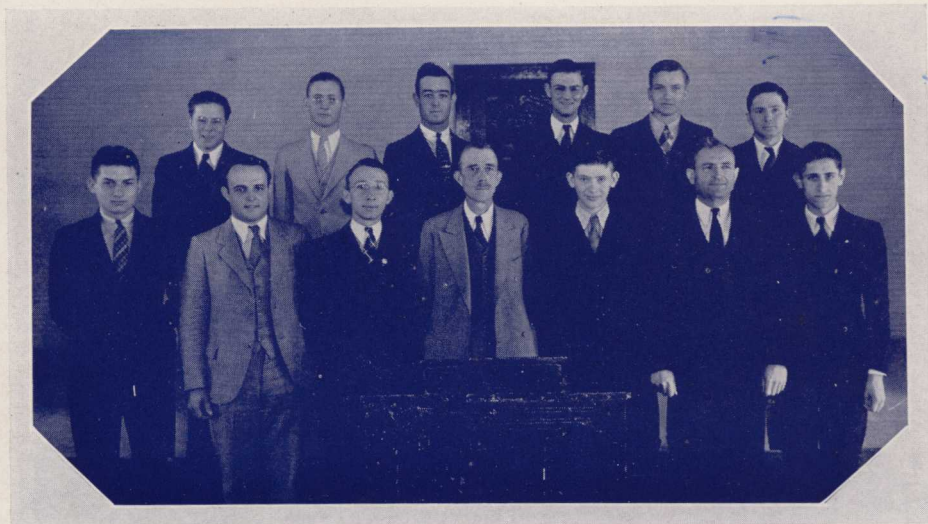
JOHNSON . . . . . *President*

WALDREP . . . . . *Vice-President*

SPRING QUARTER

WALDREP . . . . . *President*

WILLIAMS . . . . . *Vice-President*



LIFE SERVICE BAND

FALL QUARTER

SATTERFIELD . . . . . *President*

WELLES . . . . . *Vice-President*

WINTER QUARTER

TRIBBLE . . . . . *President*

LAY . . . . . *Vice-President*

SPRING QUARTER

SATTERFIELD . . . . . *President*

PATTERSON . . . . . *Vice-President*



STUDENT VOLUNTEERS

JAMES ZAMBOUNIS . . . . . *President*

JEWELL LOFTON . . . . . *Vice-President*

JACK WALDREP . . . . . *Secretary*



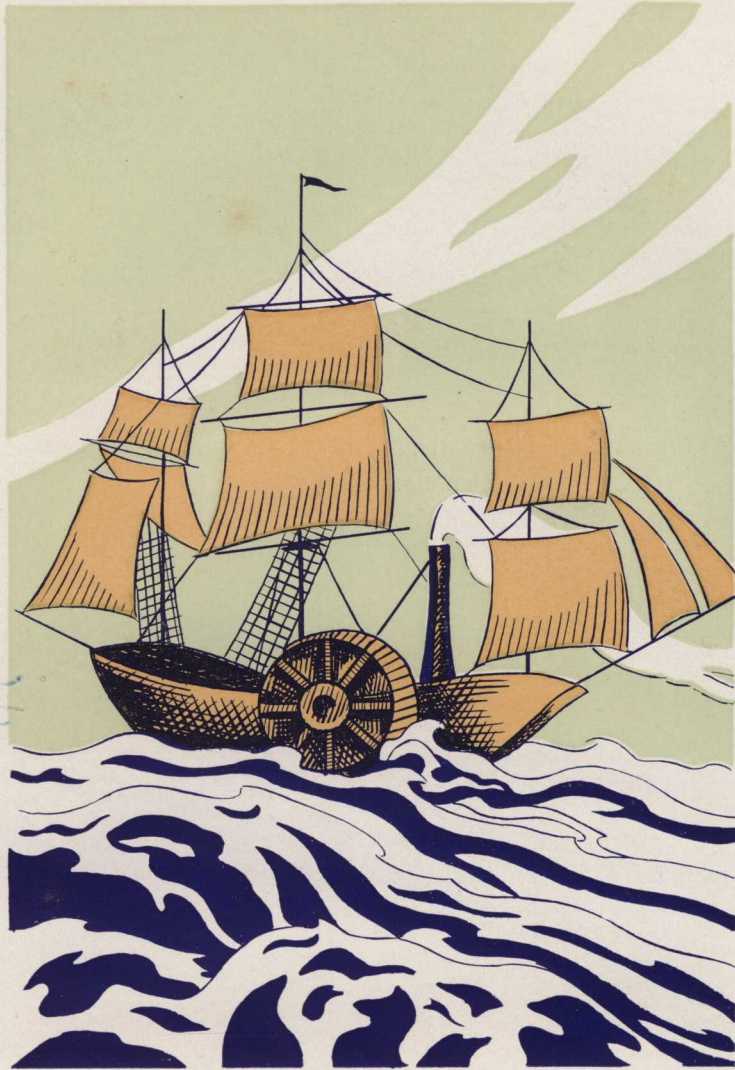
BAPTIST STUDENT UNION

ALMOND REEVES . . . . . *President*

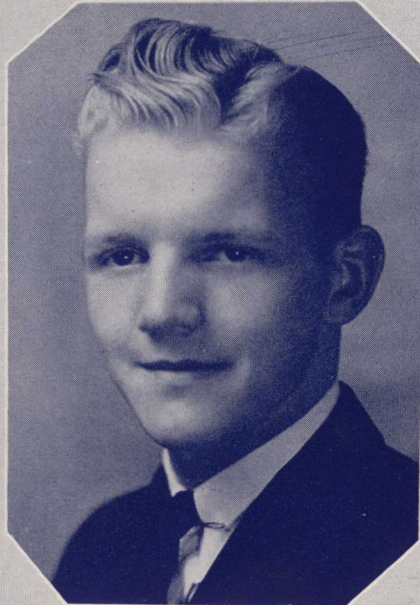
JEFF HURST . . . . . *Vice-President*

RUTH PUCKETT . . . . . *Secretary*





# Features



MOST POPULAR

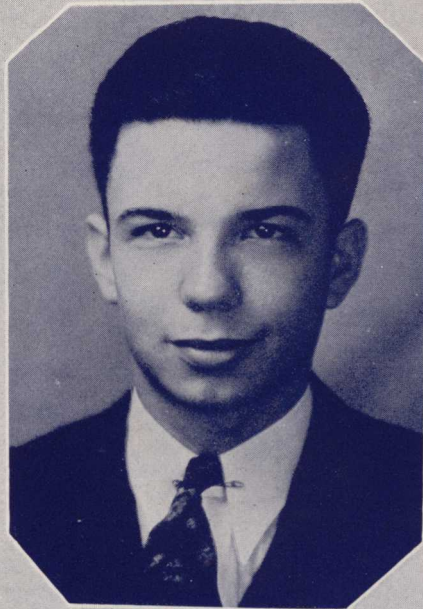
Hise

Ebrite

BEST LOOKING

Olsen

Byrd



BEST SPORTS

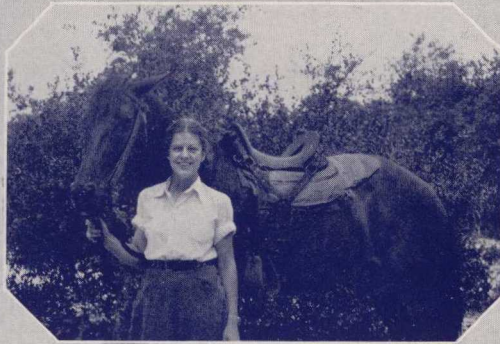
Whitlock

Hurst

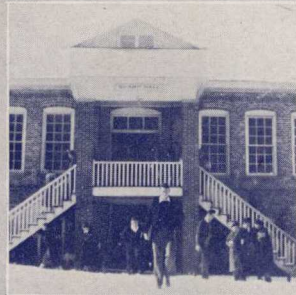
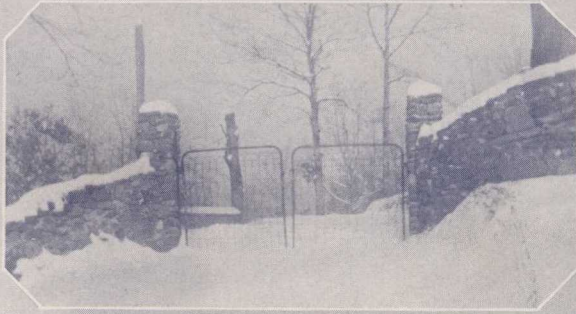
MOST APT TO SUCCEED

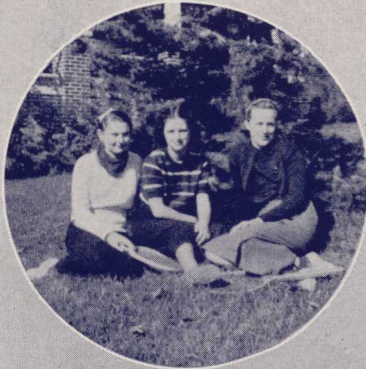
Lance

Hodges









## APPRECIATION

We appreciate the cooperation  
of the following concerns and urge  
the students to patronize them.

—THE STAFF

# Ads

# FAIN'S TRUCK LINE

ATLANTA, GA.



MURPHY, N. C.

---

Over night service from Atlanta, Gainesville and Murphy. Direct connection with other truck lines running into Atlanta, Gainesville and Murphy.

We deliver to and receive shipments from express companies in Atlanta, Gainesville and Murphy.

Let Fain handle your trunks, hand baggage and express to and from Young Harris and your worries will be over. All loads insured.

Write for shipping tags and information regarding your shipments. We serve Young Harris—why not let us serve you?

---

## FAIN'S TRUCK LINE

*Atlanta Address*

272-274 MARIETTA STREET

Phone: Jackson 2596

*Murphy Address*

101 DEPOT STREET

Phone 101



COCA-COLA CO., ATLANTA, GA.



**Goes  
hand in hand with  
good things to eat**

**Coca-Cola is pure, wholesome, energy-giving  
refreshment... containing no artificial flavor**

✓ ✓ TRAVEL BY BUS ✓ ✓

●  
Through buses from Atlanta to Young Harris twice daily  
Convenient Schedule  
and Reasonable Rates

●  
NEEL GAP BUS LINE

... Offices ...

CLEVELAND, GA.

ATLANTA, GA.

# Young L. G. Harris College

ENDING ITS FIFTIETH SESSION MAY, 1936

A Junior College under the control of the North Georgia Conference.

Twenty-three dollars and fifty cents a month pays all the charges except for books and incidentals.

Children of ministers and ministerial students do not pay tuition.

A CATALOG IS SENT ON REQUEST

T. J. LANCE, *President*

J. WORTH SHARP, *Registrar*

F. M. HUNTER, *Dean*

L. C. ATKINS, *Business Manager*

**W. E. MATHESON**

*"A Good Store"*

YOUNG HARRIS, GEORGIA

*Half a Century in  
Atlanta*

**McCORD-STEWART CO.,  
INCORPORATED**

THE  
*BLUE RIDGE*  
COFFEE FOLKS

**CROSS PRINTING COMPANY**

*Home Office*  
THE CLAYTON TRIBUNE  
Clayton, Ga.

CROSS PRINTING CO.  
*Commercial Printing*  
Demorest, Ga.

TOWNS COUNTY HERALD  
*Official Organ Towns Co.*  
Hiawasse, Ga.

A J. B. ELLISON  
P O R T R A I T

---

“The Emblem of Quality”

---

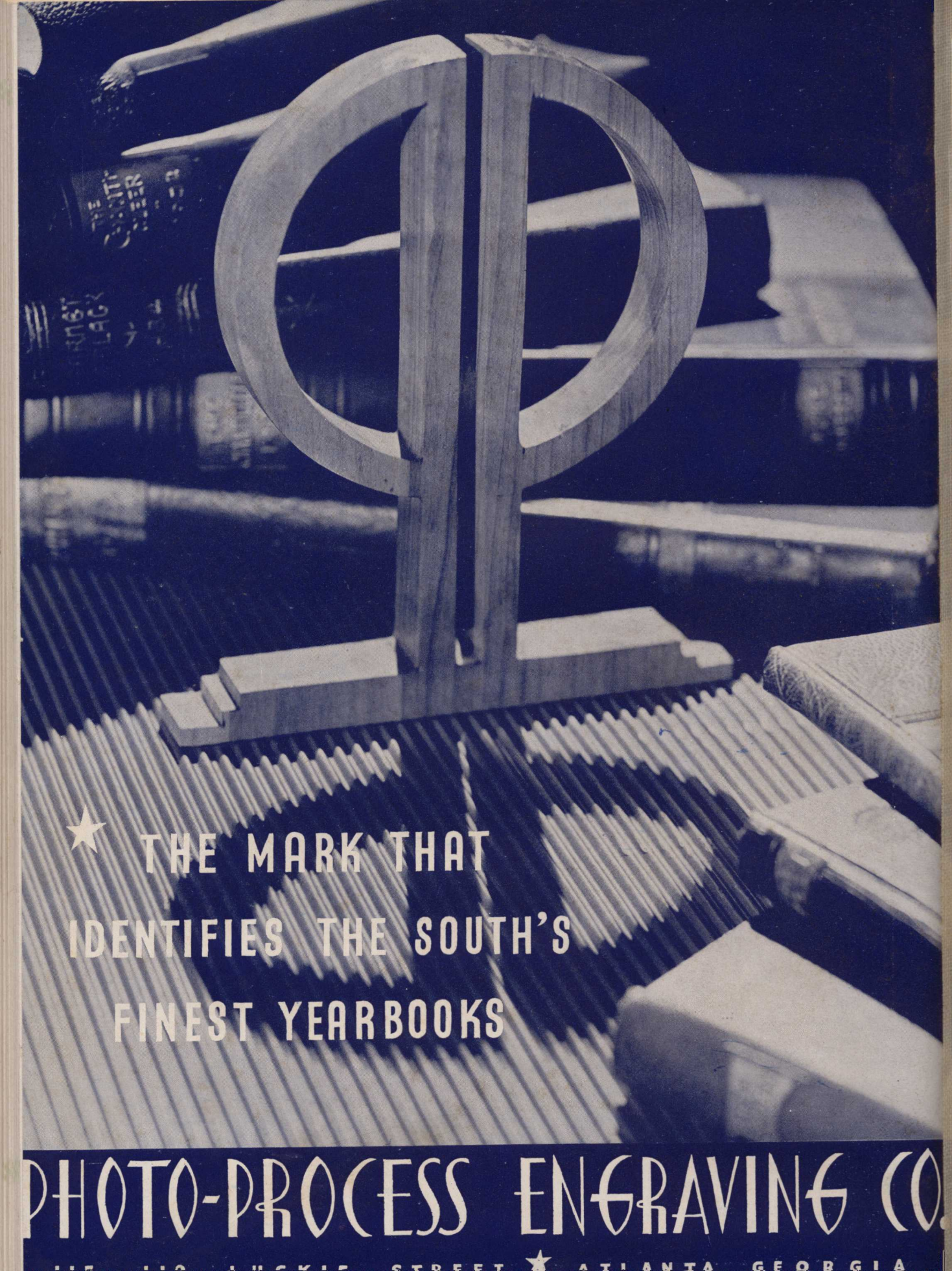
COMMERCIAL PHOTOGRAPHY  
PORTRAITURE KODAK FINISHING  
EVERYTHING PHOTOGRAPHIC

---

*College Annual Photography  
a Specialty*

---

Maker of Enotah Photographs



★ THE MARK THAT  
IDENTIFIES THE SOUTH'S  
FINEST YEARBOOKS

PHOTO-PROCESS ENGRAVING CO.

115 112 LUCKIE STREET ★ ATLANTA GEORGIA

