

DUCKWORTH LIB., YOUNG HARRIS COLLEGE



5 0839 00108243 7



Frontah 1934



**Ex Libris**



Copyright  
1934  
WILLIAM POPE  
*Editor*  
BOB CHEVES  
*Business Manager*



The  
Enotah

1934

*Published by  
The Senior Class*

YOUNG HARRIS COLLEGE

YOUNG HARRIS, GA.





**Dedication**  
**To Scott B. Appleby**

*Because*  
*of your whole-hearted support in all our*  
*undertakings*

*Because*  
*you have shared your success unselfishly*

*Because*  
*we appreciate your splendid devotion*

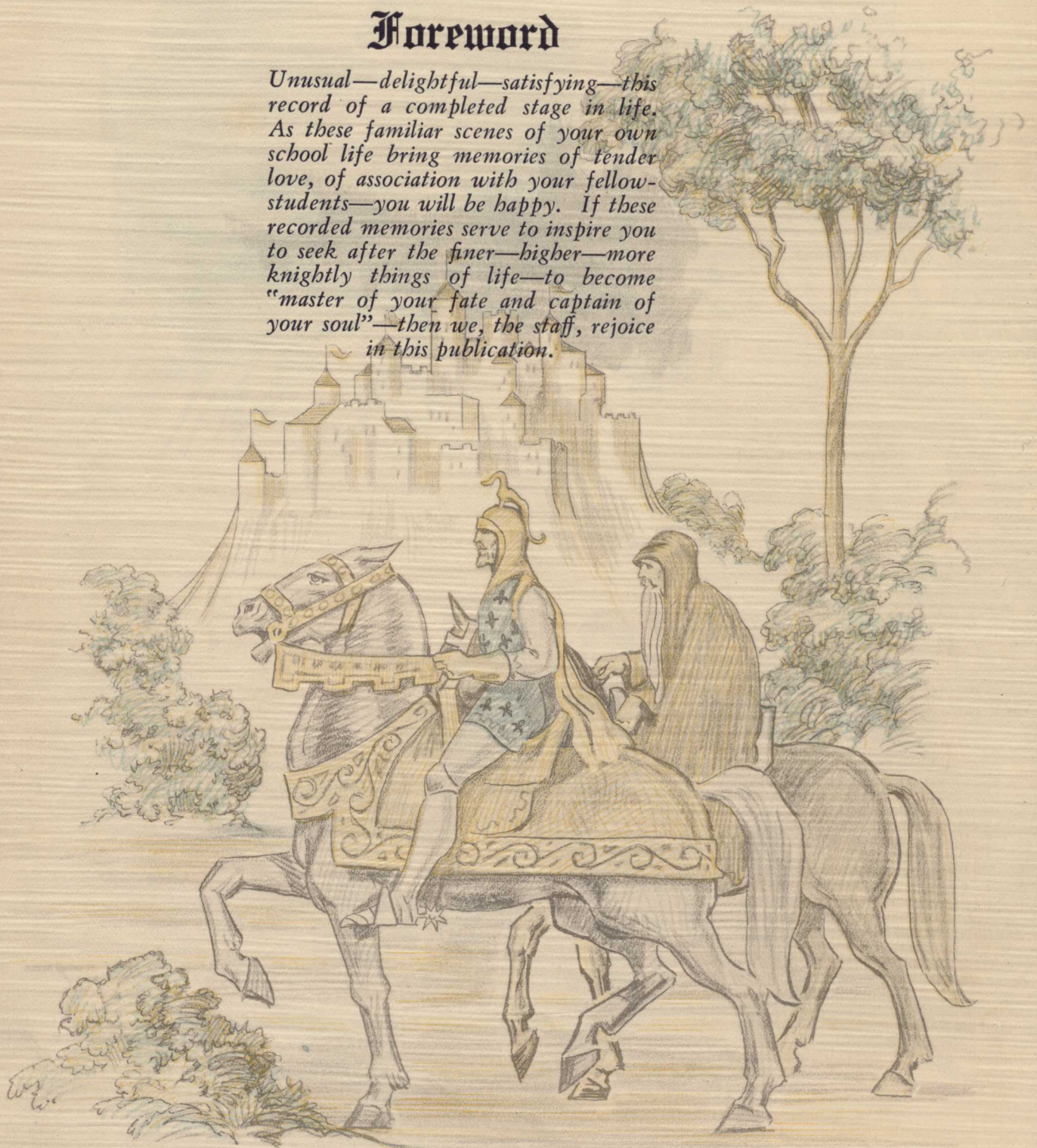
*We Dedicate*  
*this 5th volume of the ENOTAH to you as*  
*a manifestation of our appreciation for*  
*all you have done for us.*

**BILL POPE, Editor.**



## Foreword

*Unusual—delightful—satisfying—this record of a completed stage in life. As these familiar scenes of your own school life bring memories of tender love, of association with your fellow-students—you will be happy. If these recorded memories serve to inspire you to seek after the finer—higher—more knightly things of life—to become “master of your fate and captain of your soul”—then we, the staff, rejoice in this publication.*



# Contents

Book One THE SCHOOL

Book Two CLASSES

Book Three SNAPSHOTS

Book Four ATHLETICS

Book Five ACTIVITIES





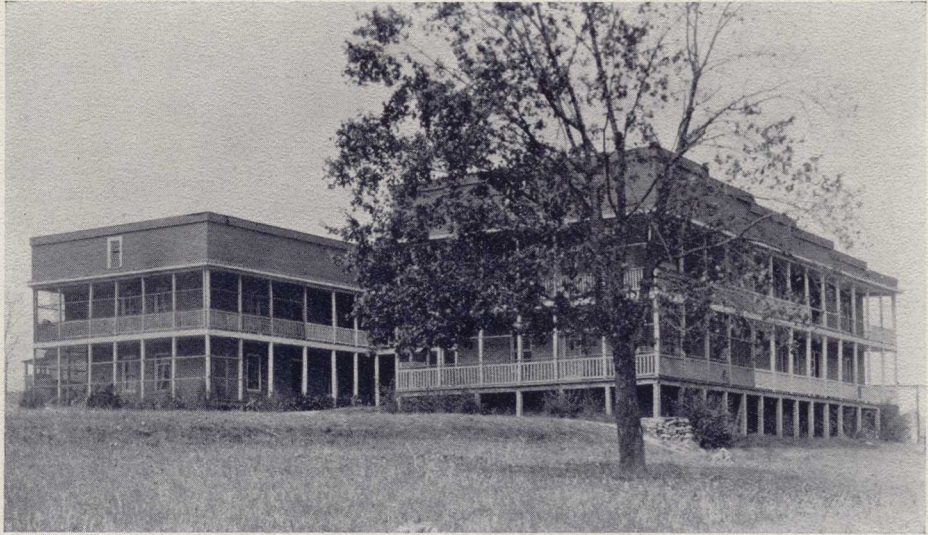
# The School



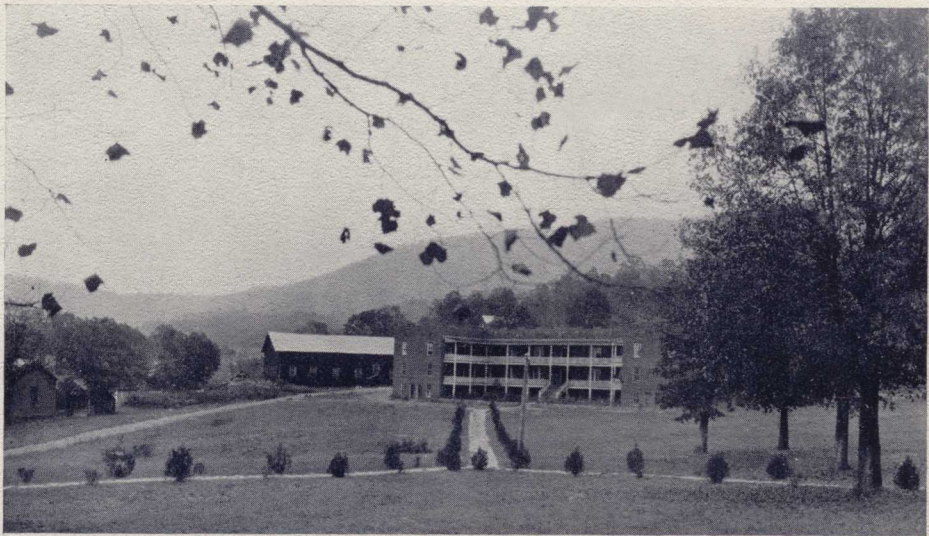
*The Oak Covered Campus*



*Entrance to Campus*



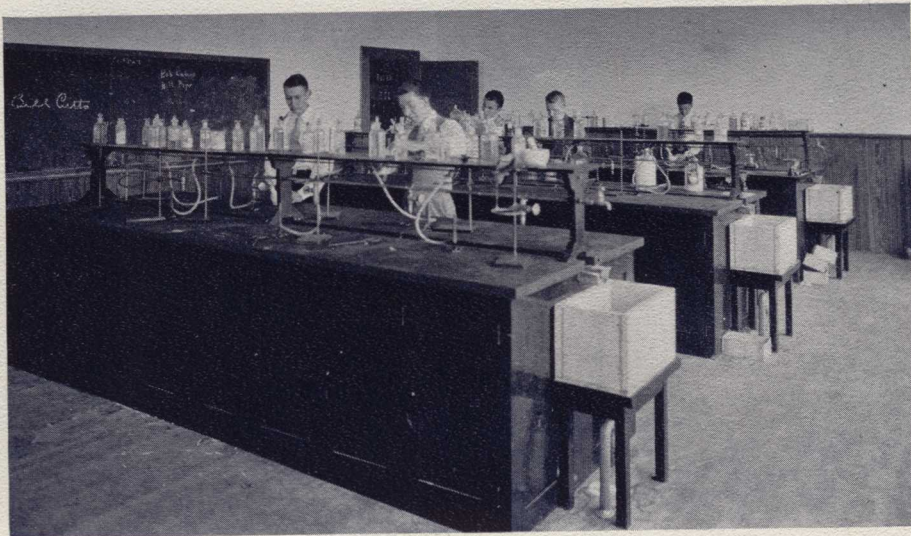
*High School Dormitory*



*Peel Hall*



*Annual in Preparation*

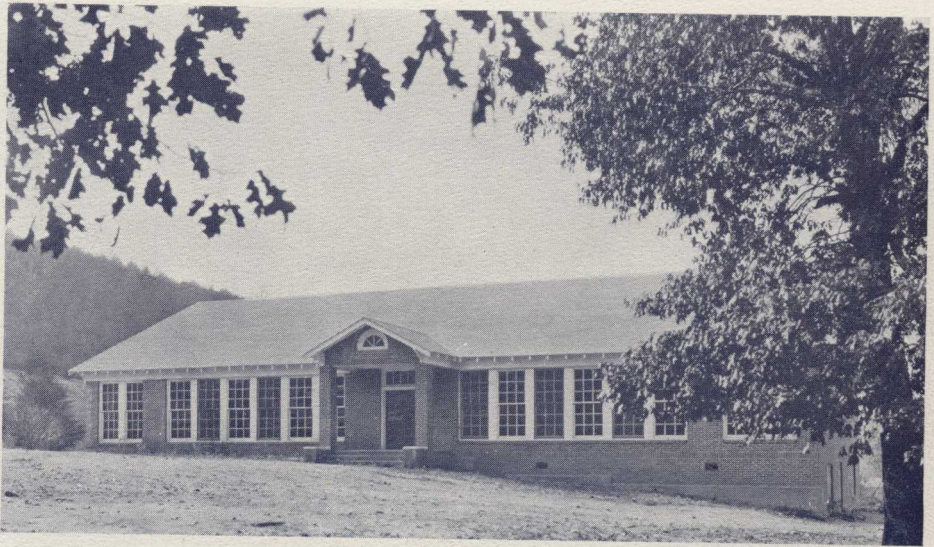


*Chemistry Laboratory*





*Library and Office Building*



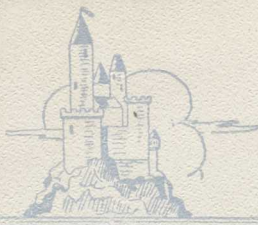
*Science Building*



*View of Campus*



*Appleby Hall*



# The Enotah



## FACULTY



LESLIE JONES, A.B.  
*Department of Education*



SARAH DAVIE, M.A.  
*Department of French*



W. C. LEAKE  
*Business Manager*



S. B. TOLAR, M.S.  
*Department of Physics*



MRS. S. B. TOLAR, A.B.  
*Librarian*



J. C. CAMP, M.A.  
*Department of English*



WILMA COLEMAN, A.B.  
*Department of Academy  
English  
Department of Expression*



W. L. DANCE, M.A.  
*Department of Latin*

1934



# The Enotah



## FACULTY



E. L. ADAMS, A.B.  
*Department of Academy  
Mathematics and Bible*



T. J. LANCE, M.A.  
*President*



W. S. MANN, A.B.  
*Department of Mathematics*



H. M. DOBBS, A.B.  
*Department of Chemistry*



E. J. BROWN, A.B.  
*Department of Physical Education*



MRS. MARY LOU OZBURN  
*Assistant Matron*

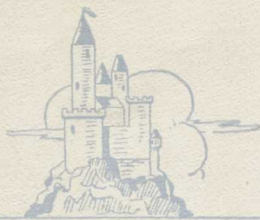


IVA GREENE  
*Department of Art*



MARY ELIZABETH BRUCE, M.A.  
*Department of Academy History*

1934



# The Enotah



## FACULTY



MRS. J. A. SHARP  
*Matron*



REV. A. B. ELIZER, A.B., B.D.  
*Pastor*  
*Department of Religious Education*



MARY WILL WAKEFORD, A.B.  
*Department of Academy French*  
*Department of Commercial Training*



H. L. BUTT, A.B.  
*Principal of High School*



J. W. SHARP, M.A.  
*Department of History and Government*



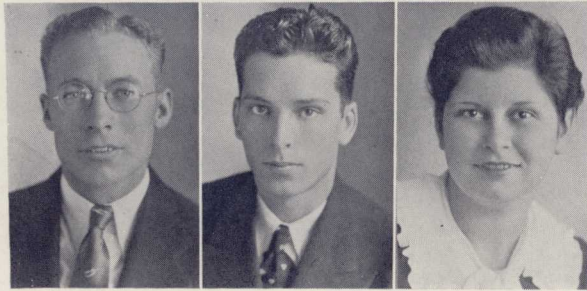
EUGENIA WRIGHT, B.M.  
*Department of Music*

1934



# Classes

## SENIOR OFFICERS



LOYD WILLIAMS  
*Vice-President*

JIM McCORKLE  
*President*

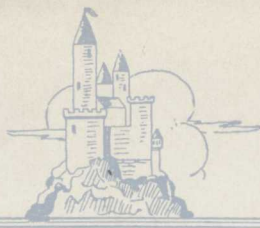
MARTHA PERKERSON  
*Secretary and Treasurer*

# Seniors

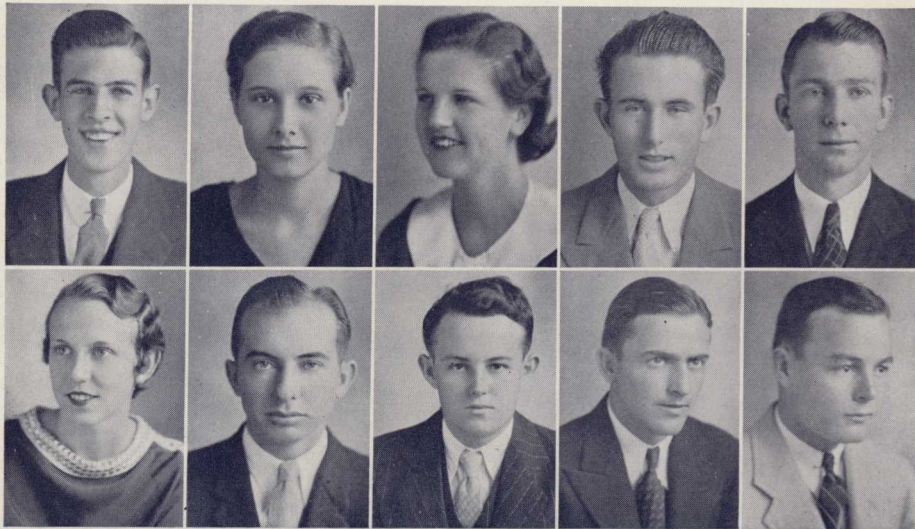
---

---

---



# The Enotah



JOHN ALLEN  
Chipley, Ga.

*"Happy am I, from care I'm free;  
Why aren't they all contented like me?"*  
Phi Chi; Supreme Court, '33-'34; Phi Chi Cham-  
pion Debater; Forensic Club.

HELEN AUSTIN  
Greshamville, Ga.

*"Thou hast a pleasant presence."*  
Susan B. Society.

NORA BARNETT  
Alpharetta, Ga.

*"She is not talkative, but actions speak louder  
than words—especially when it comes  
to playing basket-ball."*  
Phi Delta; C. W. G.; Basket-ball.

JAMES BIRDSONG  
Newborn, Ga.

*"Drink not too deep at the fountain of  
knowledge—lest ye strangle."*  
Phi Chi; Football, '32-'34.

BROWN BOWIE  
Pickens, S. C.

*"Steam that blows the whistle never turns  
the wheel."*  
Y. H. D. S.; C. W. G.; Student Council; League.

CHARLOTTE BODE  
Atlanta, Ga.

*"It is never wise to be wiser than necessary."*  
Phi Delta Society.

LINDSEY BRADEN  
Adairsville, Ga.

*"A wise questioning is half-way toward  
knowledge."*  
Honor Roll, '32-'34; C. W. G.

BILL BRAKE  
Sparta, Ga.

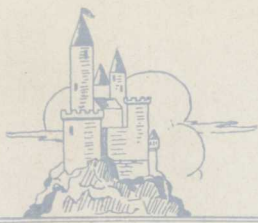
*"Faithful to his studies, his work, and his  
friends."*  
Phi Chi; Honor Roll, '32-'34.

HOLLIS BRIGMAN  
Carrollton, Ga.

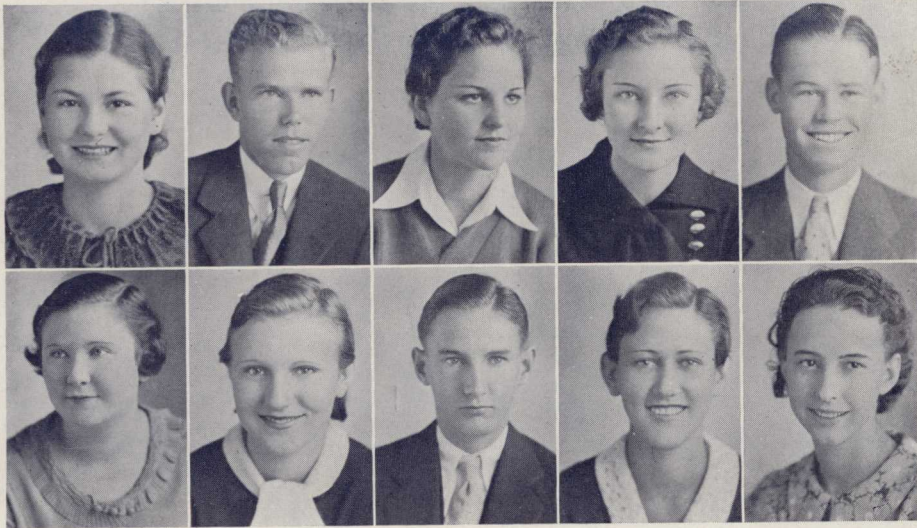
*"A merry student, never sad,  
His happy smile makes all glad."*  
Y. H. D. S.; Football, '32-'34; President Minis-  
terial Association; "Y" Club.

WILLIAM G. BROOKS  
Savannah, Ga.

*"Artie, the life of the party."*  
Phi Chi; Music Club; Choir; Honor Roll, '32-'34.



# The Enotah



JIMMIE LOU BROWN

Cumming, Ga.

*"She's just the quiet kind whose nature never varies."*

Susan B.; Music Club; League.

MELROSE CLACK

Barwick, Ga.

*"Laugh and the world laughs with you,  
Giggle and so will the class."*

Susan B.; C. W. G.; League.

VANDIVER BROWN

Royston, Ga.

*"One who knows his mind, but cares not to tell it."*

Y. H. D. S.

MARY COCKRELL

Saint George, Ga.

*"There's no need to worry,  
Things will happen anyway."*

Susan B.; C. W. G.; League.

KATHERINE CANTRELL

College Park, Ga.

*"Of wit and will,  
And her tongue seldom lies still."*

Susan B.; League; B. S. U.; Music Club; C. W. G.

OLIN COLEMAN

Young Harris, Ga.

*"One cannot always be a hero, but one can always be a man."*

Y. H. D. S.; Captain "D" Company.

RUTH CASTEEL

Washington, Ga.

*"Her character is her chief charm."*

Dormitory Council; Honor Roll, '32-'33; B. S. U.

HAZEL COLLINS

Blairsville, Ga.

*"Her ways are ways of pleasantness and all her paths of peace."*

Phi Delta; League; C. W. G.; Student Council.

ROBERT W. CHEVES

Atlanta, Ga.

*"Argue, argue over a point so thin,  
And when you don't win, argue again."*

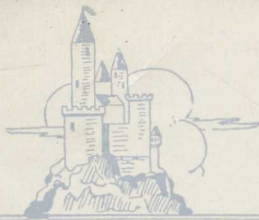
Phi Chi; ENOTAH Staff; C. W. G.

WILHEMINIA COWN

Washington, Ga.

*"A manner quiet but awake."*

League; Life Service Band; Susan B.



# The Enotah



MARY SUE DONALDSON

Copperhill, Tenn.

*"Say whatever you like, but be careful where you say it."*

Phi Delta; League.

JOHN FARGASON

Stockbridge, Ga.

*"True of eye, steady of hand and he never missed a rabbit."*

Phi Chi; Captain Company "B."

MIRIAM FRASER

Washington, Ga.

*"A good-natured, helpful sort of person who makes life very pleasant for those around her."*

Phi Delta; C. W. G.

ALBERT GARY

Cumming, Ga.

*"Sometimes I sit and think;  
More often I just sit."*

Phi Chi; C. W. G.; Football, '32-'34; Student Council; Dramatic Club; "Y" Club; League.

ANNE GAY

Millen, Ga.

*"I want what I want when I want it, and I know what I want right well."*

Phi Delta; C. W. G.; Dramatic Club; B. S. U.; Enotah Echoes Staff; League.

LORENA GUDGER

Ellijay, Ga.

*"Work when I will and idle when I will."*

Phi Delta; Student Council; Dormitory Council; C. W. G.; Captain, Company "A"; "Y" Club; Basket-ball, '32-'34; B. S. U.

TRAVIS GUTHRIE

Morganton, Ga.

*"The actions of men are the best interpreters of their thoughts."*

Basket-ball, '33-'34; C. W. G.

ROBERTA DONALDSON

Copperhill, Tenn.

*"With a heart free from care."*

Phi Delta Society.

ANNELLE HALL

*"Girls of few words are the best."*

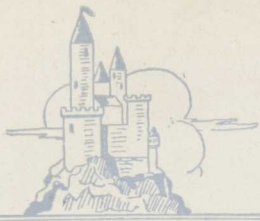
Dormitory Council; C. W. G.; League.

ROY HALL

Edison, Ga.

*"Nothing is more gratifying to a man than the power of speech."*

Y. H. D. S.; Dramatic Club; Student Council; President of Ministerial Association; C. W. G.; Champion Debater; President Forensic Club.



# The Enotah



LOIS HAMPTON  
Young Harris, Ga.

*"Ob, may fortune be so good  
As to save me from old maiden hood."*

Phi Delta; Art Club.

FRED HARRELL  
Lumpkin, Ga.

*"Every man has a sane spot somewhere."*  
Phi Chi; Dramatic Club; Football, '33-'34.

VIRGINIA HEMRICK  
Atlanta, Ga.

*"People find in her every thing congenial."*  
Susan B. Society.

IRENE HOLCOMB  
Tate, Ga.

*"Silence is more musical than song."*  
Susan B.; Honor Roll, '32-'33.

WYNELLE HOLCOMB  
Tate, Ga.

*"The way to have a friend is to be one."*  
Susan B.; League.

GUSSIE HOOPER  
Hiawassee, Ga.

*"Teachers and classes are my only objection  
to an education."*

Phi Delta Society.

R. C. JOHNSON  
Columbus, Ga.

*"We'd say of him, this is the best,  
We couldn't do without him."*

Phi Chi; Dramatic Club; Music Club; Choir;  
Glee Club; Orchestra; C. W. G.; Supreme Court.

ELIZABETH JONES  
Doraville, Ga.

*"Character is higher than intellect."*

Susan B.; President Dormitory Council; League;  
President Life Service Band; Music Club; C.  
W. G.

RUTH JONES  
Blairsville, Ga.

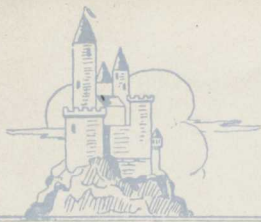
*"Be yourself above all things."*

Phi Delta Society.

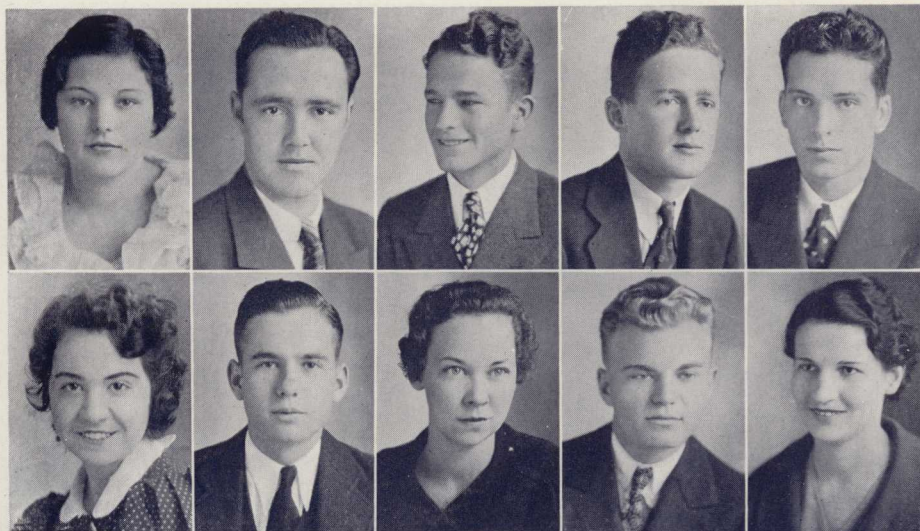
KENNETH KAY  
Macon, Ga.

*"With frowning foreheads, with lips  
Sternly compressed, we strain on."*

Phi Chi; Inter-collegiate Debater; Forensic Club;  
Editor *Enotah Echoes*; Football, '33-'34; C. W. G.



# The Enotah



MARTHA LASTINGER  
Pavo, Ga.

*"Take it all in; consider it; believe what you please."*

Phi Delta; League; Life Service Band.

BILL MARTIN  
Atlanta, Ga.

*"Oh, why must life all labor be?"*

Phi Chi Society.

GLYNN MASSEY  
Barwick, Ga.

*"Take the cash and let the credit go."*

Y. H. D. S.; Student Council; C. W. G.; Football, '33-'34; B. S. U.; Basket-ball, '32-'34; League.

CICERO McCLURE  
Chattanooga, Tenn.

*"Ability wins the esteem of all."*

Y. H. D. S.; President B. S. U.; Honor Roll, '32-'34; Supreme Court.

J. M. McCORKLE  
Fort Gaines, Ga.

*"A proper man as anyone could see."*

Y. H. D. S.; Champion Debater; Forensic Club; Y. H. D. Anniversarian; President Senior Class; Honor Roll, '32-'34; Dramatic Club; Student Council; Representative to Georgia Bi-Centennial Contest, '32; C. W. G.

OLA McCURRY  
Clayton, Ga.

*"A quiet, shy, unobtrusive maiden."*

Susan B.; Dormitory Council; B. S. U.; League; Life Service Band.

THOMAS C. METHVIN, JR.  
Dexter, Ga.

*"Why all the burry, let's stop and rest."*

Phi Chi; Honor Roll.

GRACE MINCE  
Atlanta, Ga.

*"None but herself can be her parallel."*

Susan B.; Dramatic Club; Music Club; ENOTAH Staff; Honor Roll, '32-'33; Dormitory Council; League; C. W. G.

HOMER MOORE  
Atlanta, Ga.

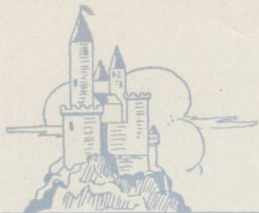
*"A boy known for his quiet ways."*

Phi Chi; Football, '33-'34.

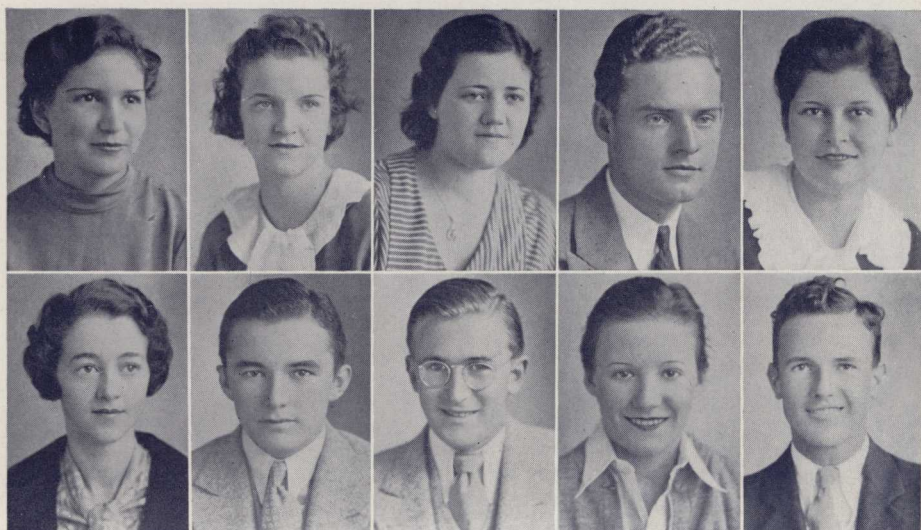
JOHNNY MOORE  
Suwannee, Ga.

*"A manner quiet, but awake."*

Susan B.; Dormitory Council; Music Club; League; Life Service Band; C. W. G.



# The Enotah



**JULIA MORCOCK**  
Miami, Fla.

*"Her hair is brown, her smile is gay,  
She has a merry, winning way."*

Susan B.; League; B. S. U.; Dramatic Club; C. W. G.; *Enotah Echoes* Staff.

**JEWEL MOZLEY**  
Douglasville, Ga.

*"Quiet and unassuming, one must know her  
to love her."*

Susan B.; Student Council; Dormitory Council; Secretary Student Body; Music Club; Choir; ENOTAH Staff; *Enotah Echoes* Staff; League; Honor Roll, '32-'33.

**GRACE PATTERSON**  
Atlanta, Ga.

*"Slow and solid, that's her."*

Susan B.; League; Choir; Music Club; Dormitory Council.

**JAY PECK**  
Trion, Ga.

*"In every rank, both great and small, 'tis  
industry supports us all."*

Y. H. D. S.; C. W. G.; Dramatic Club; Ministerial Association; Choir; Music Club.

**MARTHA PERKERSON**  
Greenville, Ga.

*"She is something sterling that will stay when  
gold and silver melt away."*

Susan B.; President Society Winter Term; Secretary Class, '34; Captain Company "C"; Basketball, '32-'34; Honor Roll, '32-'33; *Enotah Echoes* Staff; Student Council; League; Dormitory Council; C. W. G.

**VIRGINIA PIERCE**  
Shelby, N. C.

*"Turned up nose and really auburn hair.  
She has a gift of making us all feel quite  
important."*

Phi Delta; League; Dramatic Club; Music Club; C. W. G.

**BILL POPE**  
Monticello, Ga.

*"Success is measured by service."*

Phi Chi; Phi Chi Champion Debater; Intercollegiate Debater, '32-'33; Forensic Club, '32-'34; President Phi Chi Society; Phi Chi Anniversarian; ENOTAH Staff, '32-'33; Editor of Annual, '33-'34; Candidate for Clay Medal, '32-'33.

**MARTIN POTTS**  
Young Harris, Ga.

*"He's just the quiet kind whose nature never  
varies."*

Basket-ball, '33-'34.

**ELIZABETH PRATHER**  
Jasper, Ga.

*"Work if you like, but don't be worked to  
death."*

Phi Delta Society.

**OSCAR RIDDLE**  
Atlanta, Ga.

*"Perhaps it isn't proper to say precious of a  
boy, but he is just that."*

Phi Chi; C. W. G.; *Enotah Echoes* Staff; League.

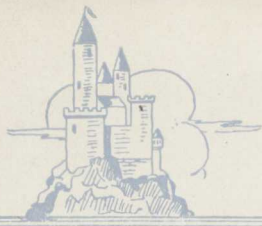
---

---

# 1934

---

---



# The Enotah



CLARK RODGERS  
Ellijay, Ga.

*"My idea of an agreeable person is one who agrees with me."*

Y. H. D. S.; Basket-ball, '32-'34; Football, '32-'34; Intercollegiate Debater; Forensic Club; Captain Company "C"; Student Council; C. W. G.

BETTY GRACE ROGERS  
Atlanta, Ga.

*"A gracious manner made up of courtesy and graciousness."*

Phi Delta; League.

ROBERT LEE RUTHERFORD  
Trion, Ga.

*"If his mind were as bright as his ties,  
A smarter man he'd be."*

Y. H. D. S.; Choir; Music Club; League.

MILDRED RUTLAND  
Turin, Ga.

*"Quiet in appearance with motives unknown."*  
Susan B. Society; League; Honor Roll, '32.

EMMALYN SANDERS  
Danielsville, Ga.

*"Friendly, efficient, bright—"*

Susan B.; Student Council; League; Music Club;  
C. W. G.

FRANCES SHEARER  
Alapaha, Ga.

*"She is a winsome, wee thing."*

Susan B. Society.

GLADYS SHIRLEY  
Clayton, Ga.

*"Take it easy—have your fun and let the old  
world flicker."*

Susan B.; C. W. G.; League; B. S. U.

CLIFFORD SMITH  
Rayle, Ga.

*"In the name of scholarship and good sense."*

Y. H. D. S.; President Y. H. D. S.; Vice-President  
Student Body; Business Manager *Enotah Echoes*;  
Washington Birthday Speaker; Intercollegiate De-  
bater, '33-'34; Forensic Club; Captain Company  
"A."

JOHN SOSBEE  
Talking Rock, Ga.

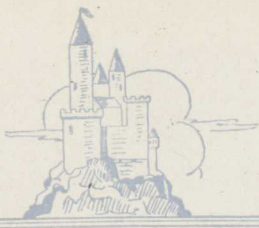
*"Thought is deeper than speech."*

Y. H. D. S.; B. S. U.; League.

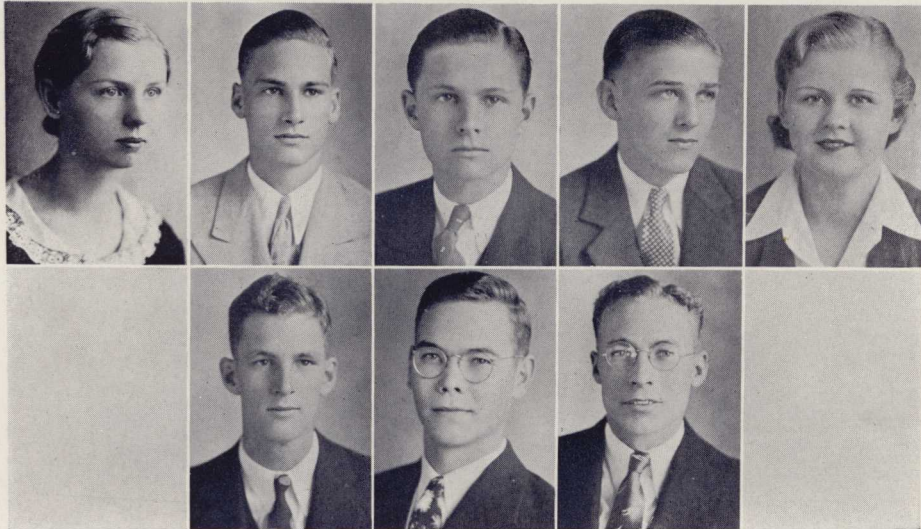
ELIZABETH THOMAS  
Atlanta, Ga.

*"Ready and willing, most capable, too; always  
on hand her part to do."*

Phi Delta; President Society, '33-'34; Basket-ball,  
'33-'34.



# The Enotah



**KATHERINE THOMAN**  
Columbus, Ga.

*"And she was a damsel of delicate mold,  
With hair like the sunshine and heart of  
gold."*

Susan B.; President Life Service Band; League;  
C. W. G.

**THOMAS TOWERY**  
West Palm Beach, Fla.

*"Love is wiser than ambition."*

Phi Chi; Dramatic Club; Intercollegiate Debater,  
'33-'34; Forensic Club; *Enotah Echoes* Staff;  
C. W. G.

**REEDER TUCKER**  
Royston, Ga.

*"Don't take life too serious,  
You'll never get out of it alive."*

Y. H. D. S.; League; B. S. U.

**MARK TURNER**  
Hartwell, Ga.

*"Begone dull care, thee and I can never  
agree."*

Y. H. D. S.

**ANNIS WESTBROOK**  
Buford, Ga.

*"Long may we seek her likeness,  
Long in vain."*

Phi Delta; President Society Fall and Winter  
Terms; League; C. W. G.; Life Service Band.

**B. P. WHEELER**  
Macon, Ga.

*"Beauty is truth—truth is beauty—That's all  
ye know and all ye need to know."*

Phi Chi; President Dramatic Club, '33-'34; Presi-  
dent Music Club; Choir; *Enotah Echoes* Staff;  
Glee Club; C. W. G.

**DAVID WILLIAMS**  
Chattahoochee, Ga.

*"He dwells in impossibilities."*

Y. H. D. S.; Intercollegiate Debater; Forensic  
Club; Honor Roll, '32-'34; C. W. G.

**LOYD WILLIAMS**  
Carnesville, Ga.

*"To take things as they are, that is my  
philosophy."*

Y. H. D. S.; Student Council; President Society;  
Vice-President Senior Class; Football; Intercol-  
legiate Debater; Forensic Club; C. W. G.

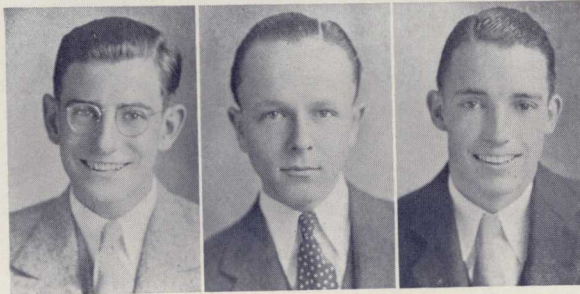
# In Memoriam

Roddy G. Mills

Class of '35

February 14, 1934

CLASS OF '35



ED OZBURN  
*Vice-President*

FRED LARSEN  
*President*

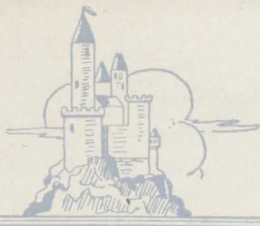
VERNON RISHER  
*Secretary and Treasurer*

# Juniors

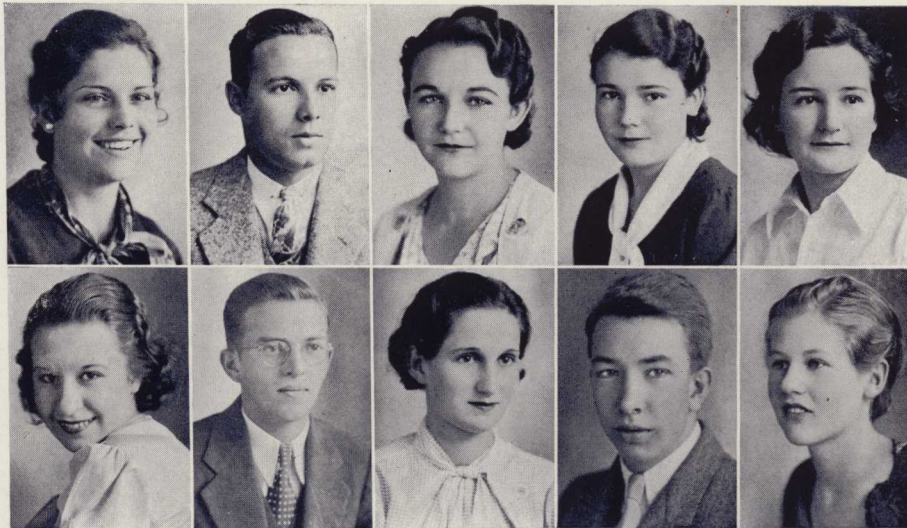
---

---

---



# The Enotah



EDITH ADAMS  
Jacksonville, Fla.  
*Susan B.*

SARAH ASKEW  
Atlanta, Ga.  
*Pbi Delta*

ED ADAMS  
Jacksonville, Fla.  
*Y. H. D. S.*

JOHN HENRY BAILEY  
Fairburn, Ga.  
*Pbi Cbi*

MARJORIE ADAMS  
Young Harris, Ga.  
*Susan B.*

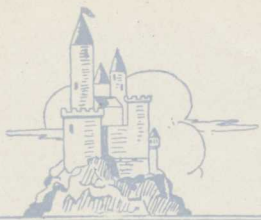
EDITH BEAVERS  
Morganton, Ga.  
*Susan B.*

MARTHA ADAMS  
Young Harris, Ga.  
*Susan B.*

DICK BEST  
Fort Gaines, Ga.  
*Y. H. D. S.*

MYRTLE ADAMS  
Blairsville, Ga.

NETTIE BOGGS  
Lawrenceville, Ga.  
*Susan B.*



# The Enotah



FREEMAN BOLT  
Chickamauga, Ga.  
*Y. H. D. S.*

DELL DAVENPORT  
Morganton, Ga.  
*Susan B.*

EVA CLEVELAND  
Gainesville, Ga.  
*Susan B.*

IRENE DEMPSEY  
Jackson, Ga.  
*Phi Delta*

EVELYN CREIGHTON  
Chattanooga, Tenn.  
*Susan B.*

MARION DOBBS  
Marietta, Ga.  
*Phi Chi*

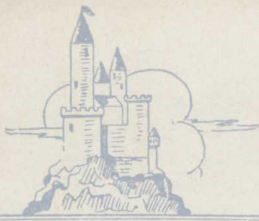
BILL CUTTS  
Calhoun, Ga.  
*Phi Chi*

WALTER FLANDERS  
Saint Marys, Ga.  
*Y. H. D. S.*

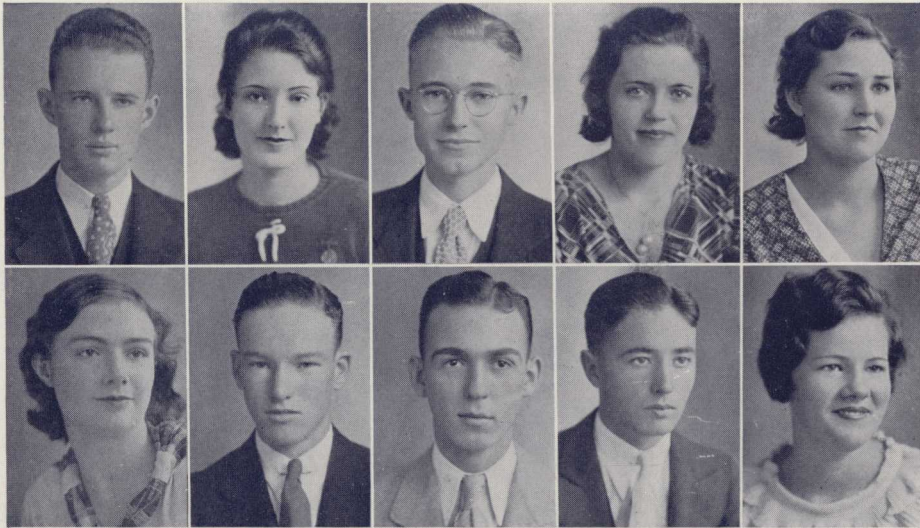
TOMMETTE DAVIS  
Ila, Ga.  
*Susan B.*

DOROTHY EDWARDS  
Morganton, Ga.  
*Susan B.*

1934



# The Enotah



LEROY ELLIS  
Chipley, Ga.  
*Phi Chi*

NELLIE HAMBY  
Arnoldsville, Ga.  
*Phi Delta*

SUSAN EVERETTE  
Cedar Grove, Ga.  
*Susan B.*

JULIAN HARRIS  
Chipley, Ga.  
*Phi Chi*

BYRON GAINES  
Elberton, Ga.  
*Y. H. D. S.*

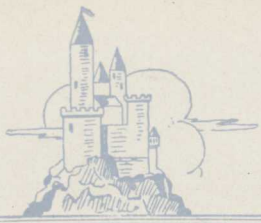
ROBERT HARRIS  
Fayetteville, Ga.  
*Phi Chi*

ADDIS GRIFFITH  
Jefferson, Ga.  
*Susan B.*

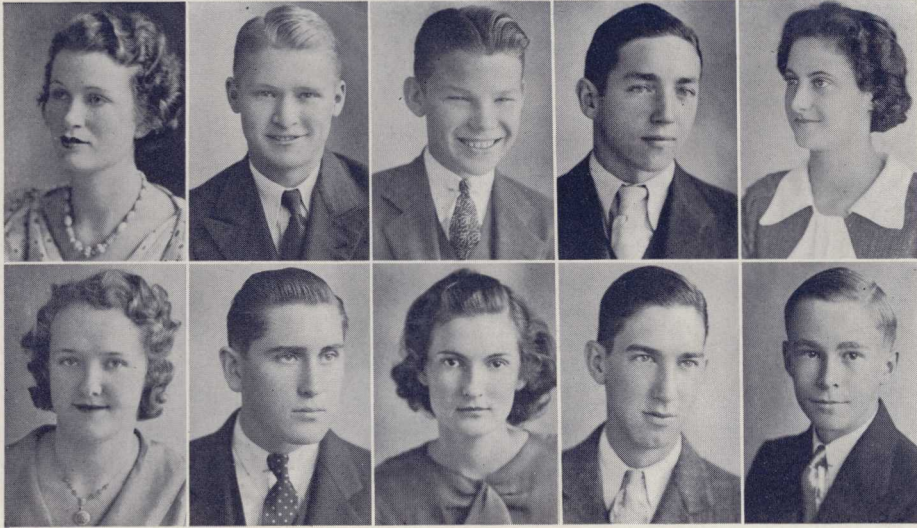
BEN HATFIELD  
Monticello, Ga.

REBA GUICE  
Bremen, Ga.  
*Phi Delta*

EVELYN HAYNES  
Clermont, Ga.  
*Susan B.*



# The Enotah



FANNIE LOU HAYNES  
Clermont, Ga.  
*Susan B.*

ANNIE HINTON  
Dacula, Ga.  
*Phi Delta*

MULLINS HENDERSON  
Quitman, Ga.  
*Y. H. D. S.*

LEON HUGHES  
Oakwood, Ga.  
*Y. H. D. S.*

DICK HENRY  
Cassandra, Ga.  
*Y. H. D. S.*

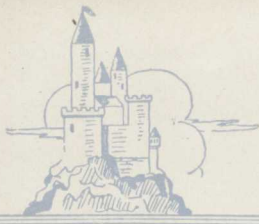
EDITH JONES  
Baxley, Ga.  
*Phi Delta*

DAVID HIGHTOWER  
Nelson, Ga.  
*Phi Chi*

ROLLINS JONES  
Vonerz, Tenn.  
*Phi Chi*

GRACE HILLIARD  
Sparks, Ga.  
*Susan B.*

STANLEY KESLER  
Jefferson, Ga.



# The Enotah



JOE KILPATRICK  
Godfrey, Ga.  
*Phi Chi*

PETER FRED LARSEN  
Dublin, Ga.  
*Phi Chi*

BYRON KING  
Fort Gaines, Ga.  
*Y. H. D. S.*

LILLA LAWSON  
Doraville, Ga.  
*Susan B.*

MILDRED LAND  
Cartersville, Ga.  
*Susan B.*

SARA LAY  
Maysville, Ga.  
*Susan B.*

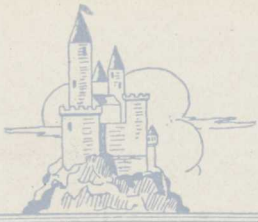
MARY LANDERS  
Atlanta, Ga.  
*Susan B.*

PIERCE LAYFIELD  
Chipley, Ga.  
*Phi Chi*

VIC LANE  
Monticello, Ga.  
*Phi Chi*

STATEN LEWIS  
Baxley, Ga.  
*Y. H. D. S.*

1934



# The Enotah



ANNE MADDOX  
Alpharetta, Ga.  
*Susan B.*

MIRIAM MITCHELL  
Summerville, Ga.  
*Susan B.*

EVELYN MANN  
Stockbridge, Ga.  
*Phi Delta*

WILLIE MOORE  
Cedar Grove, Ga.  
*Susan B.*

FLORENCE MANNING  
Alpharetta, Ga.  
*Susan B.*

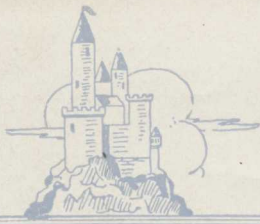
VIRGINIA MORCOCK  
Miami, Fla.  
*Susan B.*

JOHNNIE MAUNEY  
Blairsville, Ga.  
*Susan B.*

RONALD MULLINS  
Chipley, Ga.  
*Phi Chi*

LUCILE MCCORVEY  
Pavo, Ga.  
*Susan B.*

LENOS NICHOLS  
Jennings, Fl.  
Y. H. D. S.



# The Enotah



HENRY NORRIS  
Warrington, Ga.  
*Y. H. D. S.*

ROBERT PHARR  
Washington, Ga.  
*Y. H. D. S.*

LOUISE OTWELL  
Cumming, Ga.  
*Susan B.*

MABEL PINKERTON  
Eatonton, Ga.  
*Phi Delta*

SEYMOUR OWENS  
Royston, Ga.  
*Y. H. D. S.*

WILLIAM PITTMAN  
Atlanta, Ga.  
*Phi Chi*

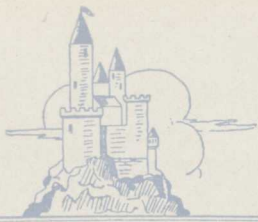
ED OZBURN  
Young Harris, Ga.  
*Y. H. D. S.*

MARVIN PIXTON  
Atlanta, Ga.  
*Y. H. D. S.*

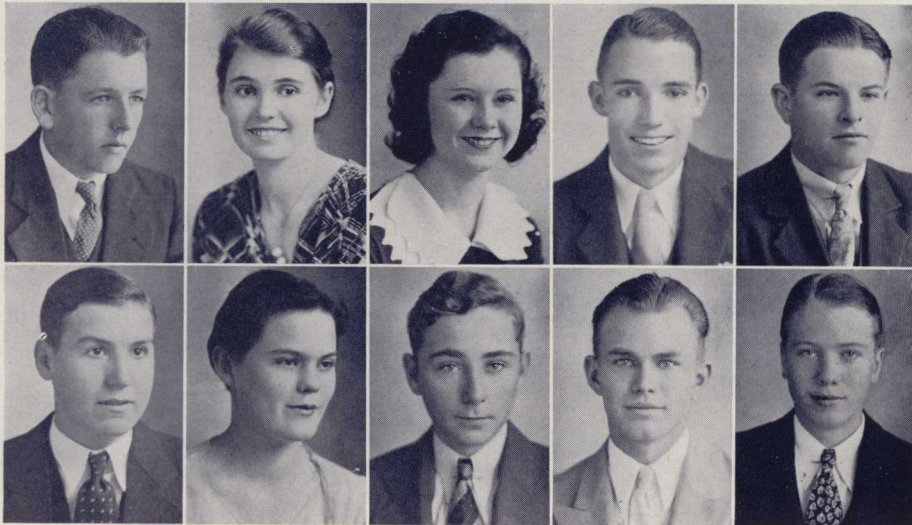
PANSEY PADRAZAS  
Tampa, Fla.  
*Susan B.*

MARY RUTH POOLE  
Cumming, Ga.  
*Susan B.*

1934



# The Enotah



BALENTINE POURNELL  
Carrabelle, Fla.  
*Y. H. D. S.*

PEYTON SCALES  
Homer, Ga.  
*Phi Chi*

NINNA RAGAN  
Jefferson, Ga.  
*Susan B.*

DIAMOND SHIFFLET  
Adel, Ga.  
*Susan B.*

LOUISE RICHARDSON  
Stockbridge, Ga.  
*Phi Delta*

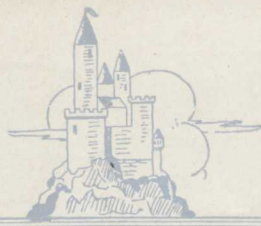
SUMNER SMITH  
Jefferson, Ga.

VERNON R'ISHER  
Savannah, Ga.  
*Y. H. D. S.*

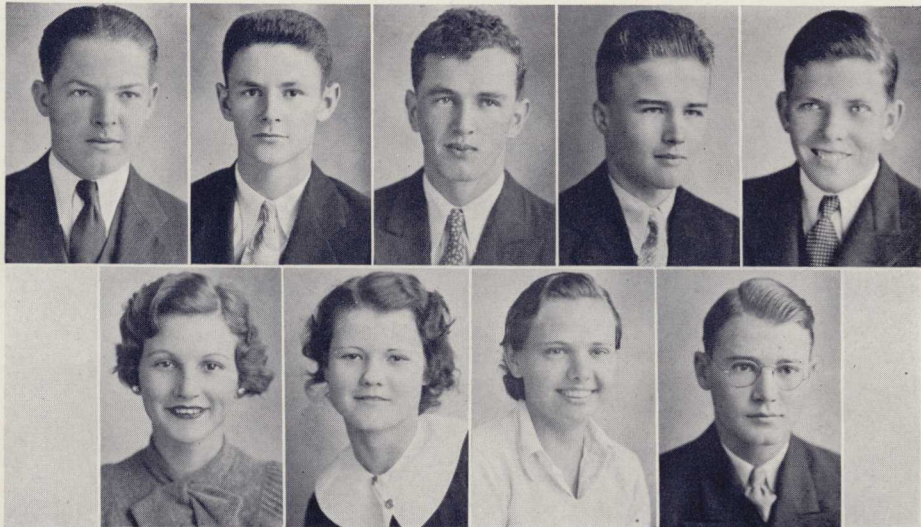
ZELLARS STANDARD  
Danburg, Ga.  
*Y. H. D. S.*

DAN ROYAL  
Chipley, Ga.  
*Phi Chi*

REX STARNES  
Asheville, N. C.  
*Y. H. D. S.*



# The Enotah



WALDO STARR  
Lithonia, Ga.  
*Y. H. D. S.*

BILLIE WHIDDEN  
Jacksonville, Fla.  
*Susan B.*

MACK SUTTON  
Sylvester, Ga.  
*Y. H. D. S.*

LILLIAN WHIDDON  
Sparks, Ga.  
*Susan B.*

RAY THOMAS  
Flowery Branch, Ga.

BILL WILLIAMS  
Charlotte, N. C.  
*Phi Delta*

S. B. TOLAR  
Young Harris, Ga.  
*Phi Chi*

GENE ZELT  
Jacksonville, Fla.  
*Phi Chi*

DICK TURNIPSEED  
Fort Gaines, Ga.  
*Y. H. D. S.*

## ACADEMY SENIOR OFFICERS



E. J. WHIDDEN  
*Vice-President*

BOB LANCE  
*President*

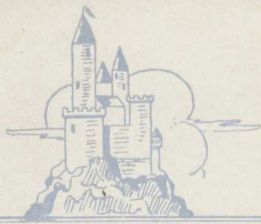
MARY ROSETTA EBRITE  
*Secretary*

# Academy Seniors

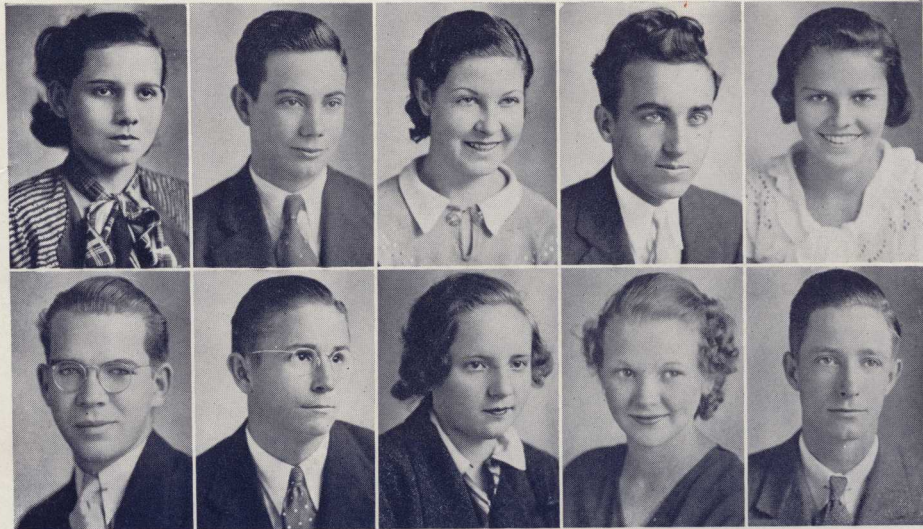
---

---

---



# The Enotah



EDITH BAKER  
Tallulah Falls, Ga.  
*Phi Delta*

BILLIE EDWARDS  
Atlanta, Ga.

CHARLES BROWN  
Macon, Ga.  
Y. H. D. S.

VERNON HARPER  
Douglas, Ga.  
*Phi Chi*

MARY DEVANE  
Atlanta, Ga.  
*Susan B.*

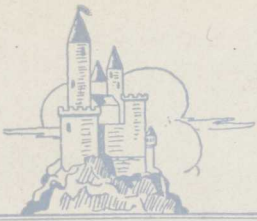
ALVA JOE HILL  
Athens, Ga.  
*Phi Delta*

WILLARD DONALDSON  
Copperhill, Tenn.

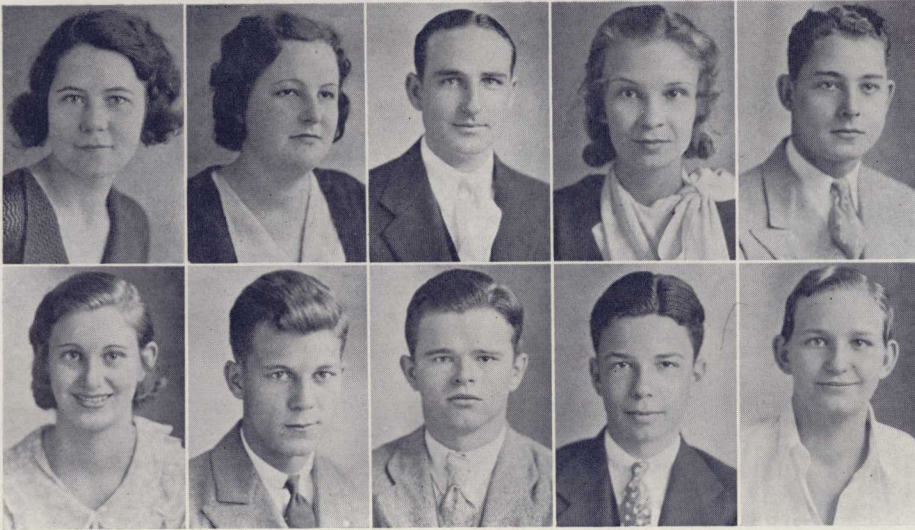
FRANCES HINSON  
Waycross, Ga.  
*Phi Delta*

MARY ROSETTA EBRITE  
LaGrange, Ga.  
*Phi Delta*

J. P. HODNETT  
Atlanta, Ga.  
*Phi Chi*



# The Enotah



LUDIE GUY  
Atlanta, Ga.  
*Phi Delta*

ANNE KENNEY  
Atlanta, Ga.  
*Phi Delta*

JOYCE HOOKS  
Dawson, Ga.  
*Phi Delta*

DAN LAIN  
Montgomery, Ala.  
*Y. H. D. S.*

OTIS HUDGINS  
Gainesville, Ga.  
*Y. H. D. S.*

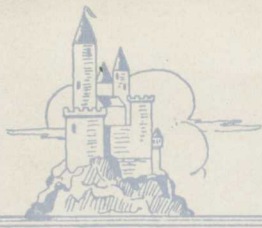
BILL LANCE  
Gainesville, Ga.  
*Phi Chi*

BILLIE HYDE  
Gainesville, Ga.  
*Susan B.*

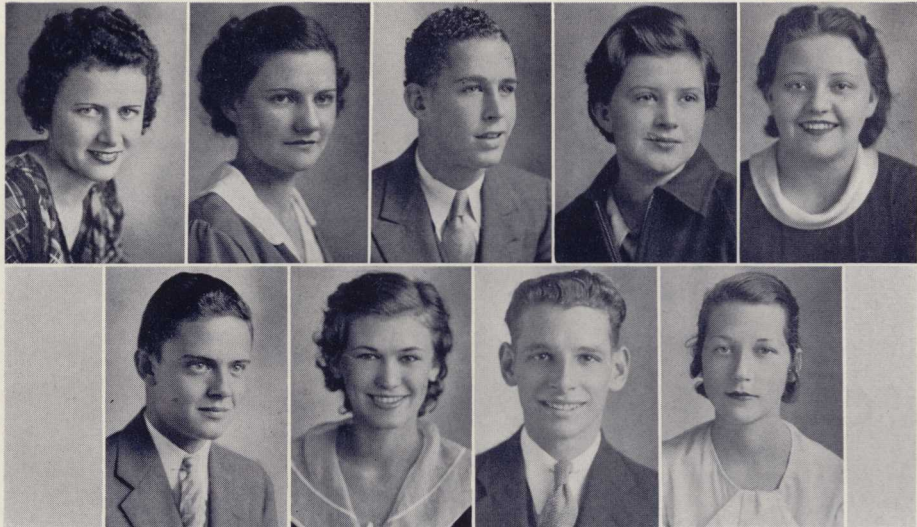
BOB LANCE  
Young Harris, Ga.  
*Phi Chi*

BARNEY JORDON  
Reidsville, Ga.  
*Phi Chi*

UNA LANCE  
Blairsville, Ga.  
*Phi Delta*



# The Enotah



LILLIAN NAIL  
McDonough, Ga.  
*Susan B.*

TOM SWIFT  
Elberton, Ga.  
*Y. H. D. S.*

DAISY PATTERSON  
Atlanta, Ga.  
*Susan B.*

KATHERINE TABOR  
Young Harris, Ga.  
*Susan B.*

AMANDO PEREZ  
Havana, Cuba

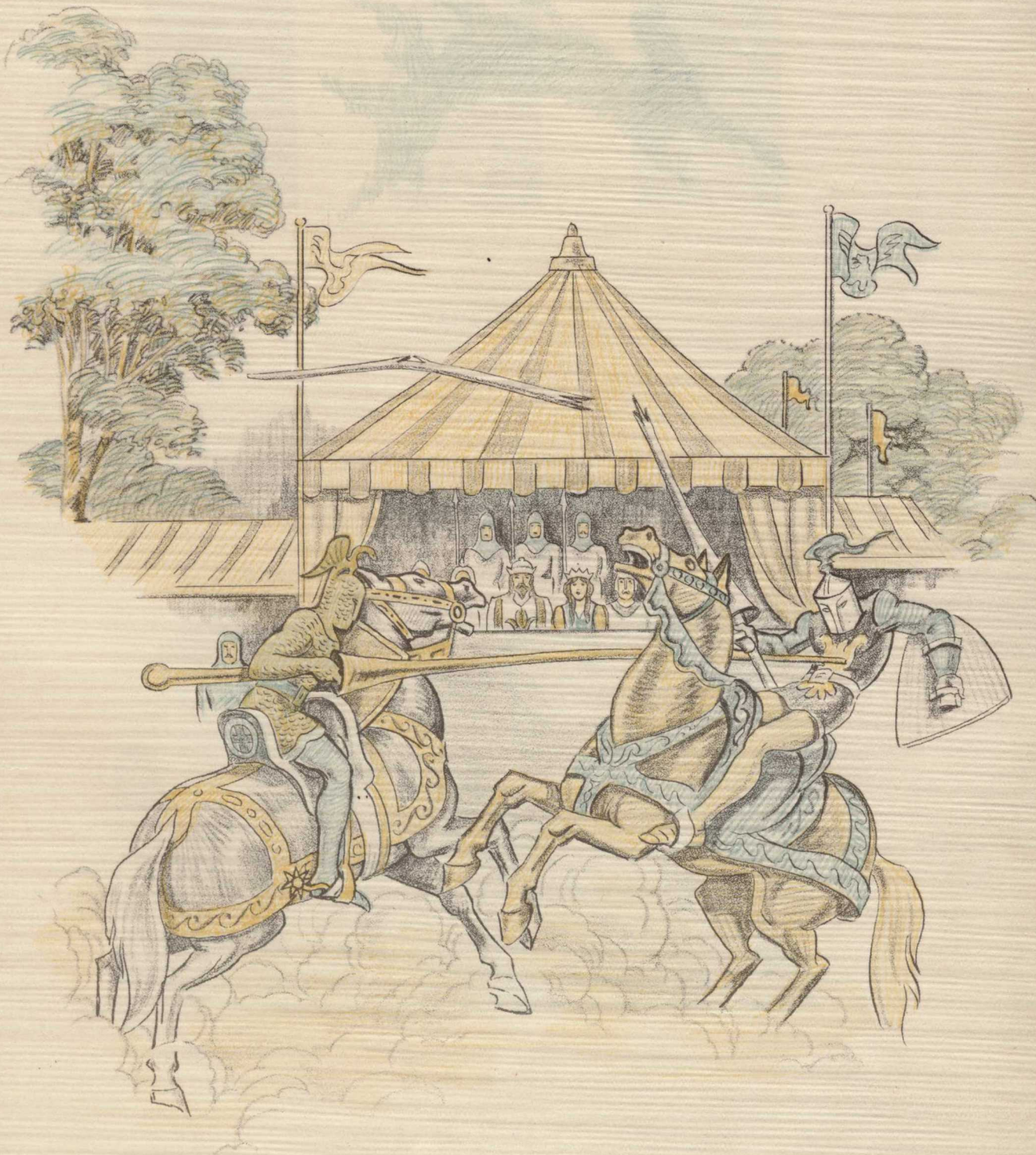
E. J. WHIDDEN  
Jacksonville, Fla.  
*Y. H. D. S.*

BERNICE PERRY  
Girard, Ala.  
*Phi Delta*

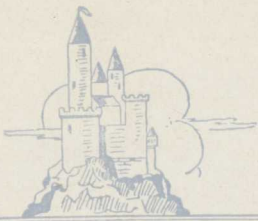
BERTHA WILSON  
Douglas, Ga.  
*Phi Delta*

PATSY PLANT  
Birmingham, Ala.  
*Phi Delta*

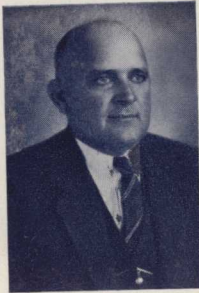
1934



# Athletics



# The Enotah



BROWN



HIGHTOWER



WAKEFORD

## COACHES

E. J. BROWN  
*Boys' Basket-ball*

DAVE HIGHTOWER  
*Manager*

MARY WILL WAKEFORD  
*Girls' Basket-ball*

### Co. "A"

LORENA GUDGER  
CLIFFORD SMITH

### Co. "B"

BILLIE WHIDDEN  
JOHN FARGASON

### Co. "C"

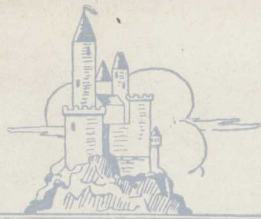
MARTHA PERKERSON  
CLARK RODGERS

### Co. "D"

BILL WILLIAMS  
OLIN COLEMAN



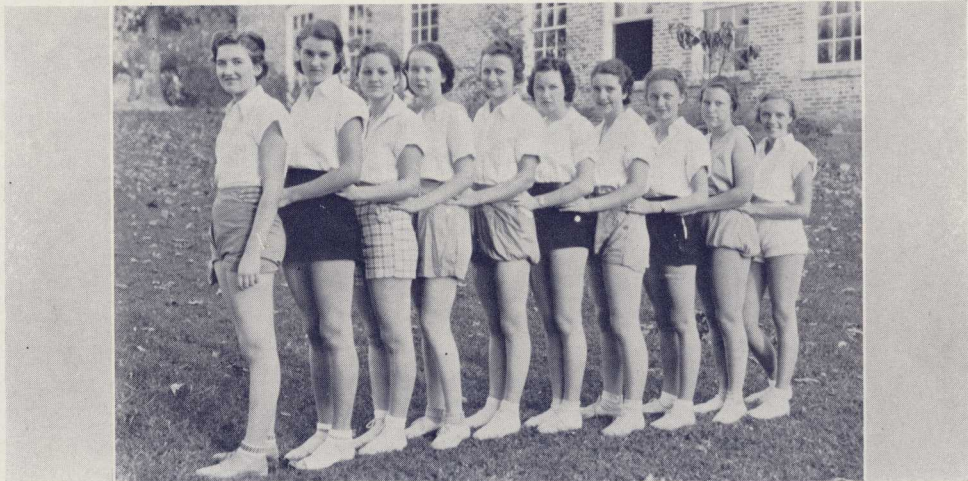
1934



# The Enotah



## COMPANY "A"

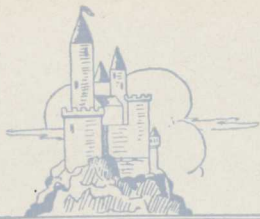


*Girls' Basket-ball*



*Football*

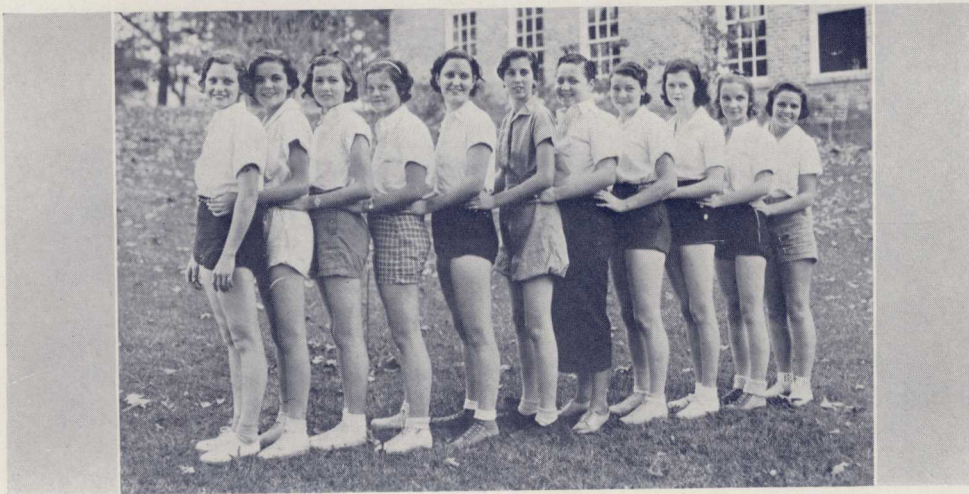
1934



# The Enotah



## COMPANY "B"

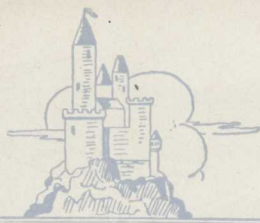


*Girls' Basket-ball*



*Football*

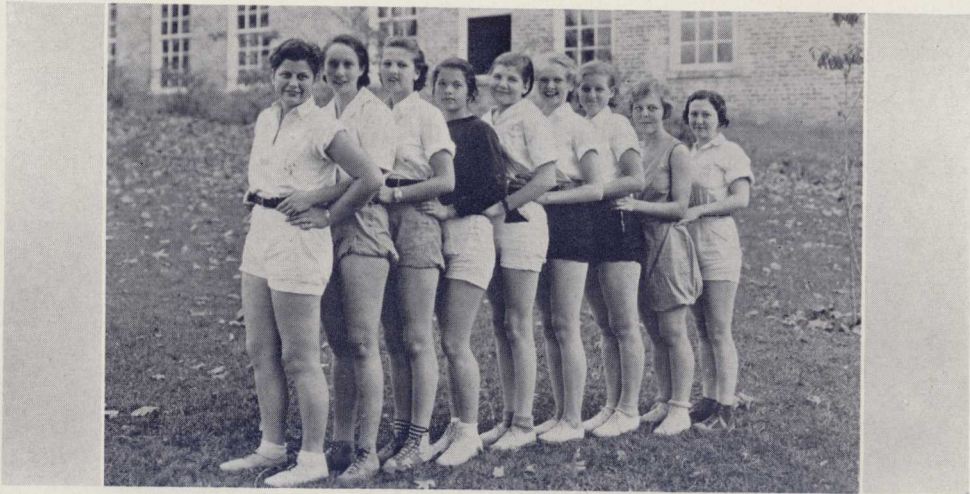
1934



# The Enotah



## COMPANY "C"

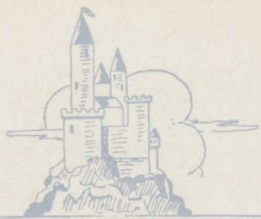


*Girls' Basket-ball*



*Football*

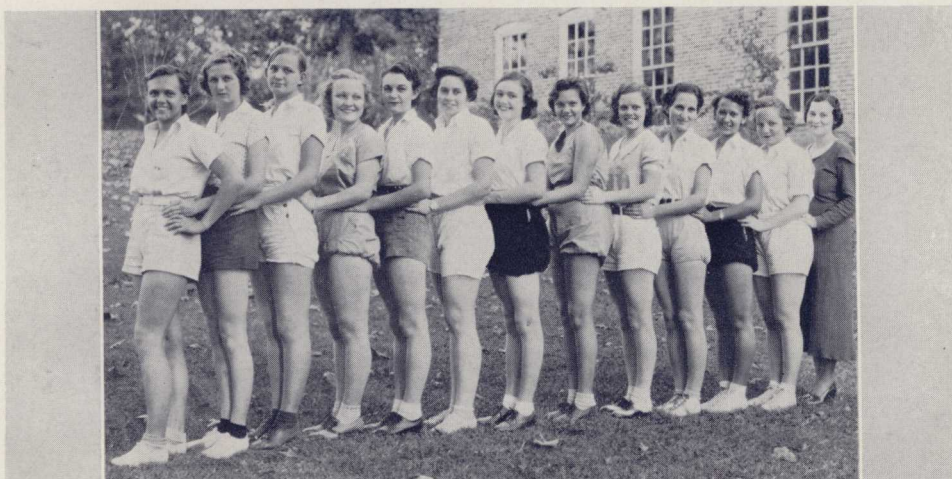
1934



# The Enotah



## COMPANY "D"

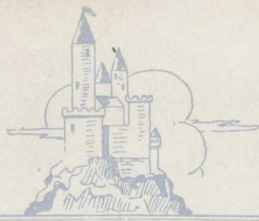


*Girls' Basket-ball*



*Football*

1934



# The Enotah



## COLLEGE BASKET-BALL

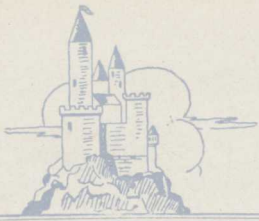


*Girls' Varsity*



*Boys' Varsity*

1934



# The Enotah



## ACADEMY BASKET-BALL



*Academy Girls'*



*Academy Boys'*

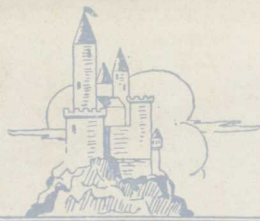
---

---

1934

---

---



# The Enotah



## FOOTBALL



E. J. BROWN . . . . . Coach  
 HOLLIS BRIGMAN . . . . . Captain  
 ALBERT GARY . . . . . Alternate Captain

### Ends

JAMES BIRDSONG  
 ROLLIN JONES

BALENTINE POURNELL  
 THOMAS TOWERY

### Max Sutton

### Guards

ALBERT GARY  
 RALPH McCURDY

RAYMOND MARCHMAN  
 GLYNN MASSEY

### DAN ROYAL

### Tackles

CLARENCE MARR  
 KENNETH KAY  
 JACK EUBANKS

CLARK RODGERS  
 CHARLES DAME  
 DICK TURNIPSEED

### Centers

GENE ZELT

VIC LANE

### Quarterbacks

HOLLIS BRIGMAN

PERRY PATRICK

### Halfbacks

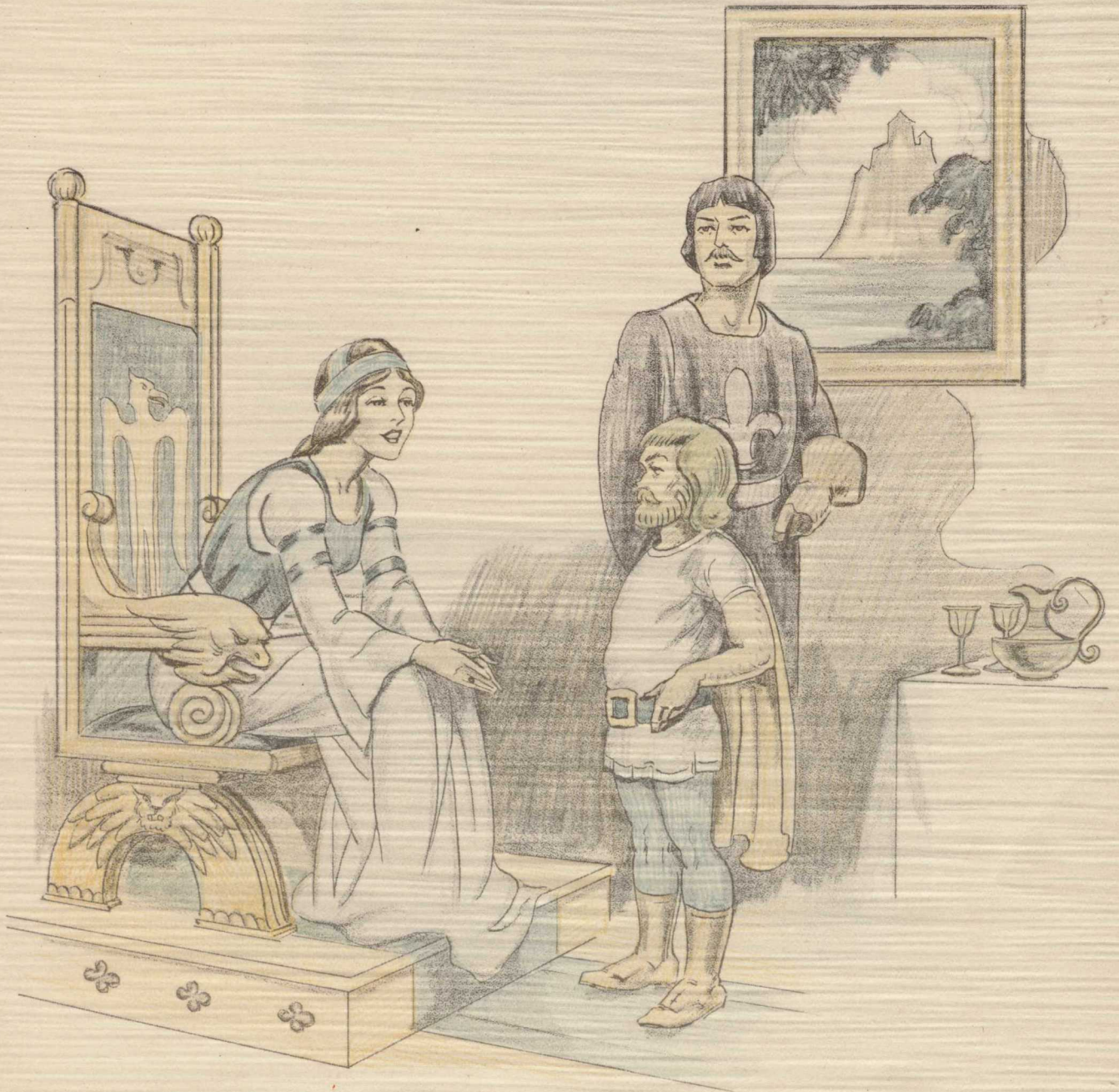
LOYD WILLIAMS  
 FRED HARRELL  
 VERNON RISHER

BILL SUMNER  
 HOMER MOORE  
 ZELLARS STANDARD

### Fullback

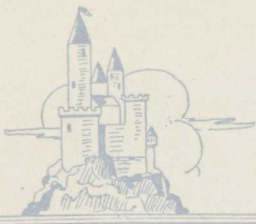
EARL MAY

1934

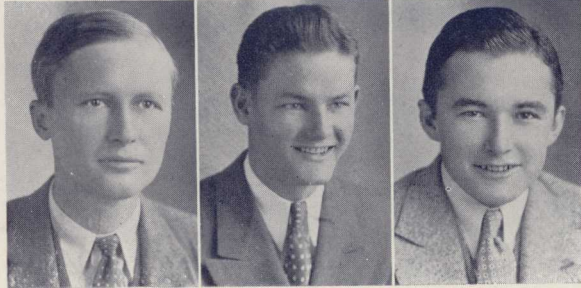


# Activities

YOUNG HARRIS COLLEGE LIBRARY



## FORENSIC CLUB



S. B. TOLAR  
Coach

ROY HALL  
President

BILL POPE  
Vice-President

### *Phi Chi Champion Debaters*

JOHN ALLEN

JOHN BAILEY

BILL POPE

### *Young Harris Champion Debaters*

JIM McCORKLE

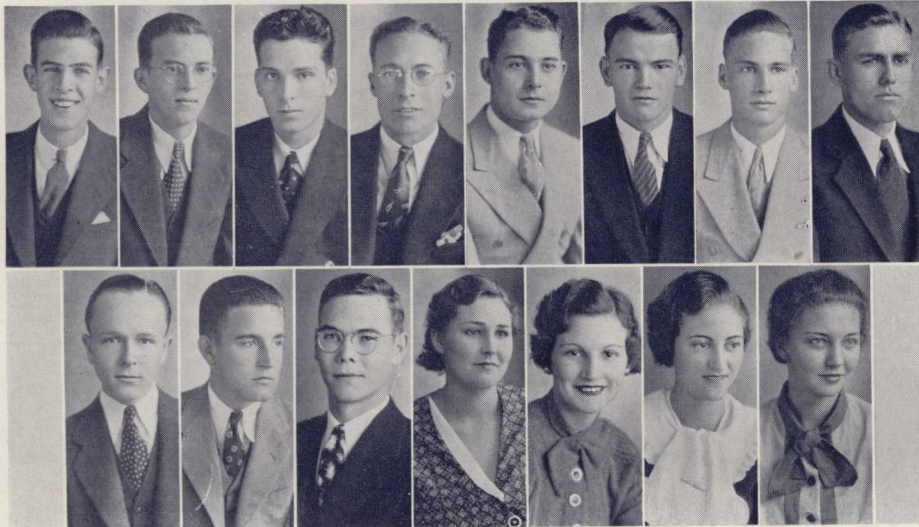
ROY HALL

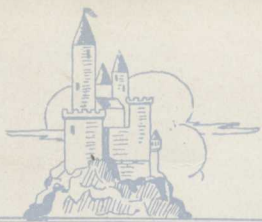
PADERICK MCGEE

### *Inter-Collegiate Debaters*

THOMAS TOWERY  
FRED LARSEN  
REBA GUICE  
IRENE DEMPSEY  
KENNETH KAY  
BARNEY JORDON

CLARK RODGERS  
DAVE WILLIAMS  
BILLIE WHIDDEN  
EVELYN CREIGHTON  
LOYD WILLIAMS  
CLIFFORD SMITH





# The Enotah



## STUDENT COUNCIL



CLIFFORD SMITH  
Vice-President

JOHN H. BAILEY  
President

JEWEL MOZLEY  
Secretary

ALBERT GARY  
Sergeant-at-Arms

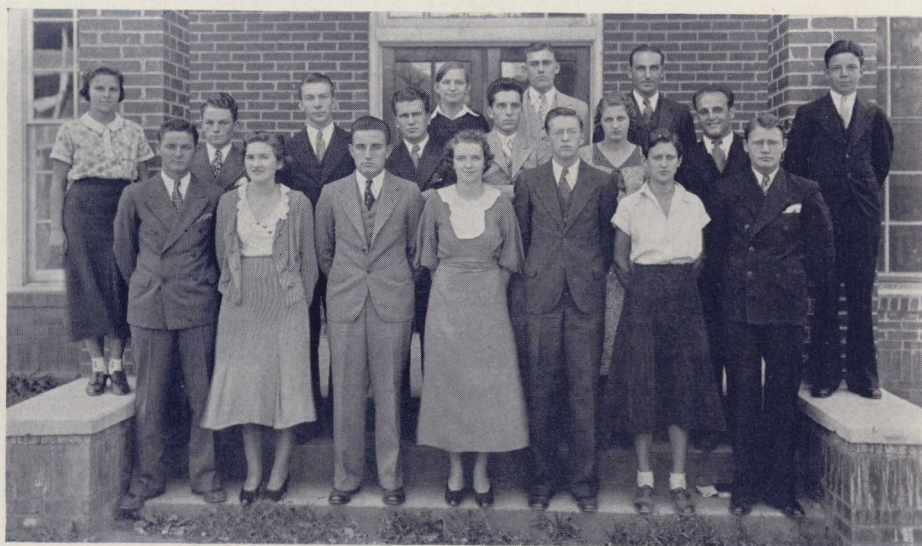
GLYNN MASSEY  
Solicitor General

### *Executive Council*

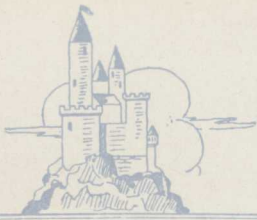
### *Athletic Council*

JIM McCORKLE  
ROY HALL  
HAZEL COLLINS  
OTIS HUDGINS  
UNA LANCE  
BOB LANCE  
BROWN BOWIE

LORENA GUDGER  
MARTHA PERKERSON  
LOYD WILLIAMS  
CLARK RODGERS  
E. J. WHIDDEN  
MARY ROSETTA EBRITE



1934

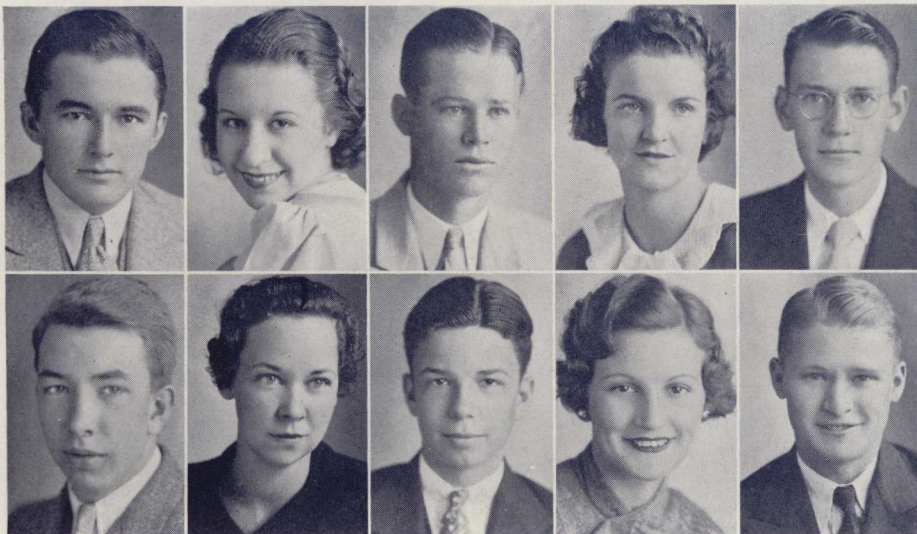


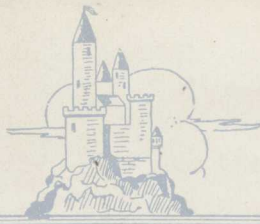
# The Enotah



## ENOTAH STAFF

- BILL POPE . . . . . *Editor-in-Chief*
- SARAH ASKEW . . . . . *Associate Editor*
- BOB CHEVES . . . . . *Business Manager*
- JEWEL MOZLEY . . . . . *Literary Editor*
- BILL CUTTS . . . . . *Assistant Business Manager*
- DICK BEST . . . . . *Assistant Editor*
- GRACE MINCE . . . . . *Art Editor*
- BOB LANCE . . . . . *Advertising Manager*
- BILLIE WHIDDEN . . . *Circulation Manager*
- MULLINS HENDERSON . . *Sports Editor*





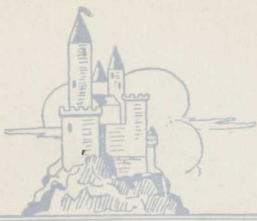
# The Enotah



## ENOTAH ECHOES STAFF

- KENNETH KAY . . . . . *Editor-in-Chief*
- B. P. WHEELER . . . . . *Sports Editor*
- JEWEL MOZLEY . . . . . *Composing Editor*
- THOMAS TOWERY . . . . . *Exchange Editor*
- OSCAR RIDDLE . . . . . *Managing Editor*
- MULLINS HENDERSON . . . . . *Assistant Editor*
- MARTHA PERKERSON . . . . . *Associate Editor*
- ANNE GAY . . . . . *Literary Editor*
- JULIA MORCOCK . . . . *Circulation Manager*
- CLIFFORD SMITH . . . . *Business Manager*





# The Enotah



## PHI CHI DEBATING SOCIETY

### OFFICERS

#### *Fall Term*

BILL POPE . . . . . *President*  
 B. P. WHEELER . . . . . *Vice-President*

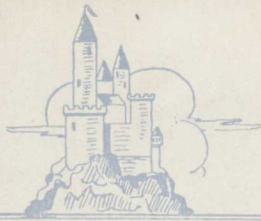
#### *Winter Term*

JOHN H. BAILEY . . . . . *President*  
 ALBERT GARY . . . . . *Vice-President*

#### *Spring Term*

ALBERT GARY . . . . . *President*  
 B. P. WHEELER . . . . . *Vice-President*





# The Enotah



## YOUNG HARRIS DEBATING SOCIETY

### OFFICERS

#### *Fall Term*

CLIFFORD SMITH . . . . . *President*  
 LOYD WILLIAMS . . . . . *Vice-President*

#### *Winter Term*

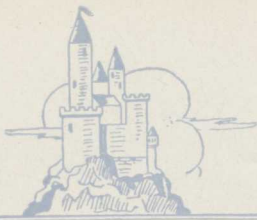
LOYD WILLIAMS . . . . . *President*  
 DAVE WILLIAMS . . . . . *Vice-President*

#### *Spring Term*

DAVE WILLIAMS . . . . . *President*  
 ROBERT RUTHERFORD . . . . . *Vice-President*



1934



# The Enotah



## PHI DELTA SOCIETY

### OFFICERS

#### *Fall Term*

ANNIS WESTBROOK . . . . . *President*  
 NELL HARDY . . . . . *Vice-President*

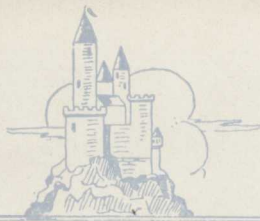
#### *Winter Term*

ANNIS WESTBROOK . . . . . *President*  
 EDITH JONES . . . . . *Vice-President*

#### *Spring Term*

ELIZABETH THOMAS . . . . . *President*  
 EDITH JONES . . . . . *Vice-President*





# The Enotah



## SUSAN B. HARRIS SOCIETY

### OFFICERS

#### *Fall Term*

BILLIE WHIDDEN . . . . . *President*  
 JULIA MORCOCK . . . . . *Vice-President*

#### *Winter Term*

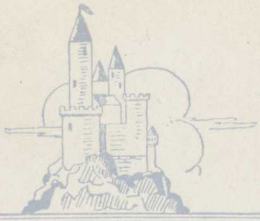
MARTHA PERKERSON . . . . . *President*  
 DOROTHY WALSH . . . . . *Vice-President*

#### *Spring Term*

JEWEL MOZLEY . . . . . *President*  
 VIRGINIA MORCOCK . . . . . *Vice-President*



1934



# The Enotah



## MINISTERIAL ASSOCIATION

ROY HALL

HOLLIS BRIGMAN

CHARLES BROWN

PADERICK MCGEE

EVERETTE SWEATNAM

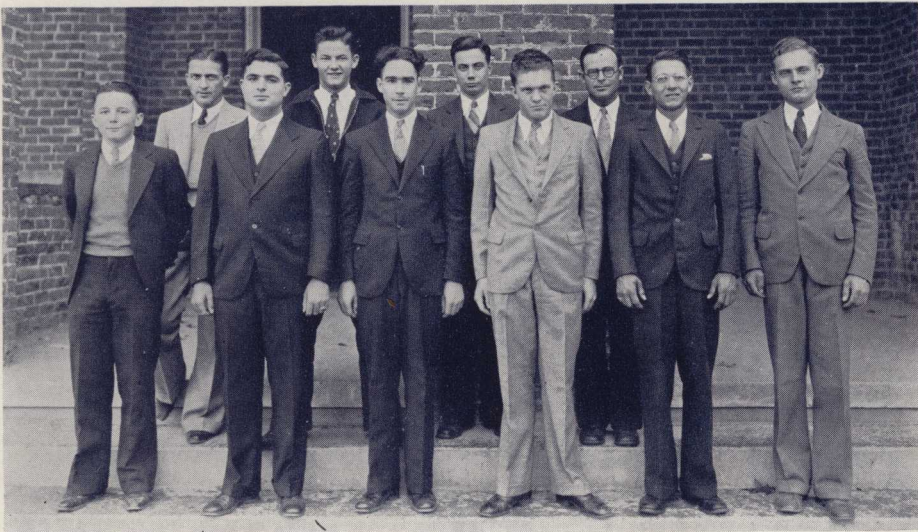
HENRY NORRIS

CHARLES GRAY

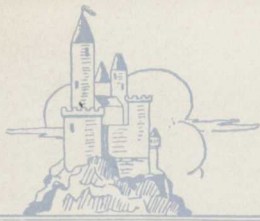
CAROL BOYD

HARRY MITCHAM

JAY PECK



1934



# The Enotah



## LIFE SERVICE BAND

JANIE CROWE

ANNIS WESTBROOK

MAUD ADAMS

ELIZABETH JONES

LILLIAN LAWSON

KATHERINE THOMAN

ANNELLE HALL

ALMA MEDLOCK

EVELYN CREIGHTON

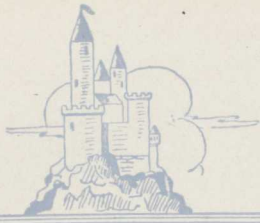
ADDIS GRIFFITH

JOHNNY MOORE

REBA GUICE



1934



# The Enotah



## CHOIR

BILLIE HYDE

FLORENCE MANNING

JEWEL MOZLEY

DAISY PATTERSON

GRACE PATTERSON

ANNE MADDOX

SARA PLANT

BILLIE WHIDDEN

MARY ROSETTA EBRITE

BILL BROOKS

R. C. JOHNSON

EUGENIA WRIGHT (*Director*)

B. P. WHEELER

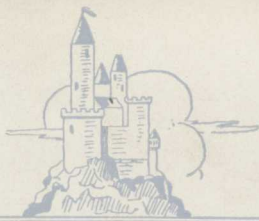
PAUL STEVENS

JAY PECK

HOLLIS BRIGMAN



1934



# The Enotah



## MUSIC CLUB

EUGENIA WRIGHT . . . . . *Director*

B. P. WHEELER . . . . . *President*

KAY TABOR . . . . . *Vice-President*

JEWEL MOZLEY . . . . . *Vice-President*

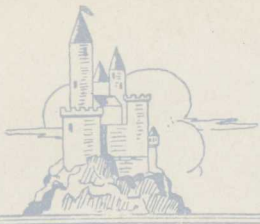
R. C. JOHNSON . . . . . *Vice-President*

VIRGINIA PIERCE . . . . . *Secretary*

CECILE BARRETTE . . . . . *Treasurer*



1934



# The Enotah



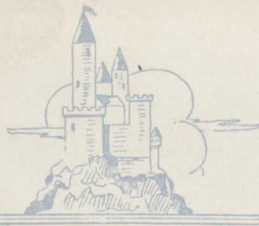
## DRAMATIC CLUB



*Scenes from "She Stoops To Conquer"*



1934



# The Enotah



## BAPTIST STUDENT UNION

CICERO McCLURE

BYRON KING

JOE KILPATRICK

RONALD MULLINS

MULLINS HENDERSON

JULIA MORCOCK

SUSAN EVERETT

SIM McELROY

JULIAN HARRIS

DAN ROYAL

MIRIAM FRASER

GLYNN MASSEY

CLARK RODGERS

EUGENIA WRIGHT

FAY TAYLOR

NINNIE RAGAN

VIRGINIA MORCOCK

KATHERINE CANTRELL

JOHN SOSBEE

MINNALEE TAYLOR

DICK TURNIPSEED

RUTH CASTEEL

JIM McCORKLE

DICK BEST

WOODROW TANNER



1934



# Snap Shots



I am convinced that Darwin was right!!



Isn't this doggie?



The College shiek



The Chamber maids



Our Pal



The 'back view's good how 'bout the front?



Nit



The modern Rip Van Winkles  
Can't you hear them snore?

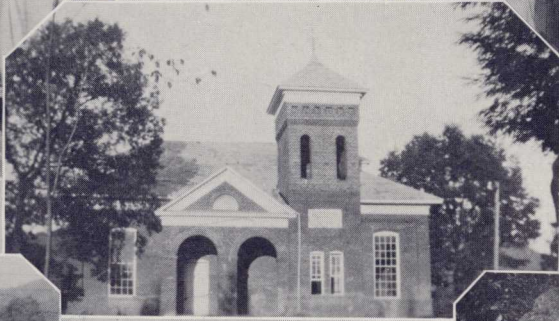


Wit

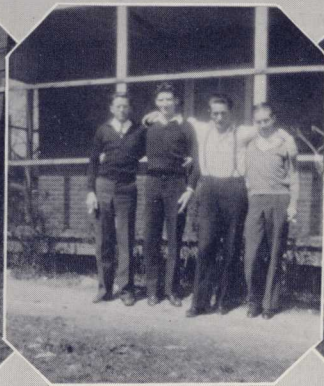


FAMILIAR  
SCENES





FAMILIAR  
FACES





### APPRECIATION

*We appreciate your co-operation  
in the publication of this book  
and we urge all students to pat-  
ronize the concerns represented.*

THE STAFF.

**Ads**



Refresh  
yourself

5¢

Drink

**Coca-Cola**

Delicious and Refreshing

Coca-Cola Company, Atlanta, Ga. 105-C

✓ SHIP BY ✓  
FAIN'S TRUCK LINE

Freight and express service from Atlanta, Ga., to Murphy, N. C.,  
via Young Harris and Hiawassee, Ga. All loads insured.

Special attention will be given trunks and other  
baggage for Young Harris students.



ATLANTA ADDRESS:  
General Warehouse & Storage Co.  
272-274 Marietta Street

MURPHY ADDRESS:  
101 Depot Street  
Phone 101

✓ TRAVEL BY BUS ✓

◆  
Through buses from Atlanta to Young Harris twice daily  
Convenient Schedule  
and Reasonable Rates

◆  
NEEL GAP BUS LINE

... Offices ...  
CLEVELAND, GA. ✓ ATLANTA, GA.

1860  
1934  
THE  
GAINESVILLE  
EAGLE

◆  
*THE EAGLE* appreciates the privileges of printing your "Enotah Echoes," 1933-34 catalogue, programs and general printing needs. Our modern equipment and trained printers will welcome an opportunity to prove the excellence of our work : : : :

ALL ✓ ✓ ✓  
PHOTOGRAPHS

in  
this annual

◆  
*Were Made by*

◆  
ARNETT'S STUDIO

25 1/2 North Lumpkin Street  
ATHENS ✓ GEORGIA

COMPLIMENTS

✓ ✓ OF ✓ ✓

HOTEL & RESTAURANT  
SUPPLY CO., INC.



ATLANTA ✓ GEORGIA

HALF A CENTURY  
IN ATLANTA



McCORD-STEWART CO.,  
INC.



The  
**BLUE RIDGE**  
COFFEE FOLKS

THE E. D. STONE PRESS

Good Work

✓ at ✓

Reasonable Prices

137 Lumpkin Street

ATHENS ✓ GEORGIA

Fraternity, College  
and Class Jewelry

COMMENCEMENT ANNOUNCEMENTS  
AND INVITATIONS

Official Jeweler and Stationer to  
Young Harris College and Academy

**L. G. BALFOUR CO.**

*Manufacturing Jewelers and Stationers*

ATTLEBORO ✓ MASS.

FRIERSON-McEVER CO.

GAINESVILLE ✓ GEORGIA

*"Style and Quality Leaders"*

CLOTHING

LADIES' READY-TO-WEAR

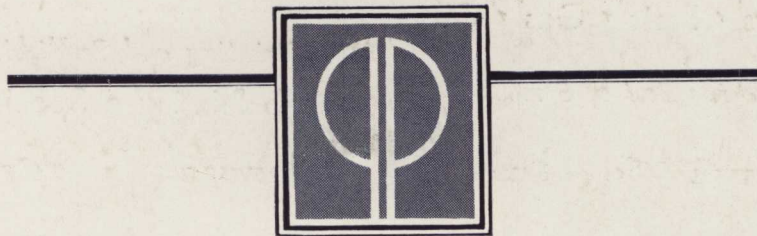
SHOES

Mail Orders Receive Prompt Attention

W. E. MATHESON

"A Good Store"

YOUNG HARRIS ✓ GEORGIA



ANOTHER  
*Personality*  
YEARBOOK



DESIGNED AND  
ENGRAVED THE  
PERSONALITY  
WAY . . . . BY



Photo-Process Co.

. . . SPRING AT LUCKIE . . . ATLANTA . . .

**BUTT'S GARAGE**

Repairs † Parts † Gas † Oil

*With the Best of Service*

BLAIRSVILLE † GEORGIA

... THE ...

**NORTH GEORGIA NEWS**

*Printing and Publishing*

Job Printing a Specialty

BLAIRSVILLE † GEORGIA

**BARRON'S SHOE SHOP**

We Solicit Your

Shoe Repairing

GAINESVILLE † GEORGIA

**DAVIS-WASHINGTON  
COMPANY**

◆  
*EVERYTHING  
FOR BUILDING*

◆  
GAINESVILLE † GEORGIA

**THE  
CLAYTON TRIBUNE**

Commercial Printers

MAIL ORDERS SOLICITED

L. P. CROSS, *Manager*

CLAYTON † GEORGIA

**YOUNG HARRIS  
TEA ROOM**

◆  
A Good Place to Eat

◆  
YOUR PATRONAGE ALWAYS  
APPRECIATED

**MURPHY LAUNDRY**

Dry Cleaning and  
Family Wash

MURPHY † N. C.

*Compliments of † † †*

**DAVIS BAKERY**

◆  
GAINESVILLE † GEORGIA

SUCCESSFUL ANNUALS  
REQUIRE THE SERVICES  
OF EXPERIENCED AND  
EXPERT CRAFTSMEN

## FOOTE & DAVIES COMPANY

HAVE THESE SERVICES

*And*—————  
*the most necessary components  
of all really fine books including*

A SPECIAL ANNUAL  
SALES AND SERVICE  
ORGANIZATION

CREATIVE DESIGNERS  
AND LAYOUT ARTISTS

ABUNDANT EQUIPMENT  
MODERN AND COMPLETE

PRICES REPRESENTING  
MAXIMUM IN VALUE



*Atlanta  
Georgia*

