


DUCKWORTH LIB., YOUNG HARRIS COLLEGE



5 0839 00108270 0

ENOTAH  
1951



*Here it is...*

*The*

**1951**

*Picturing*

*at*

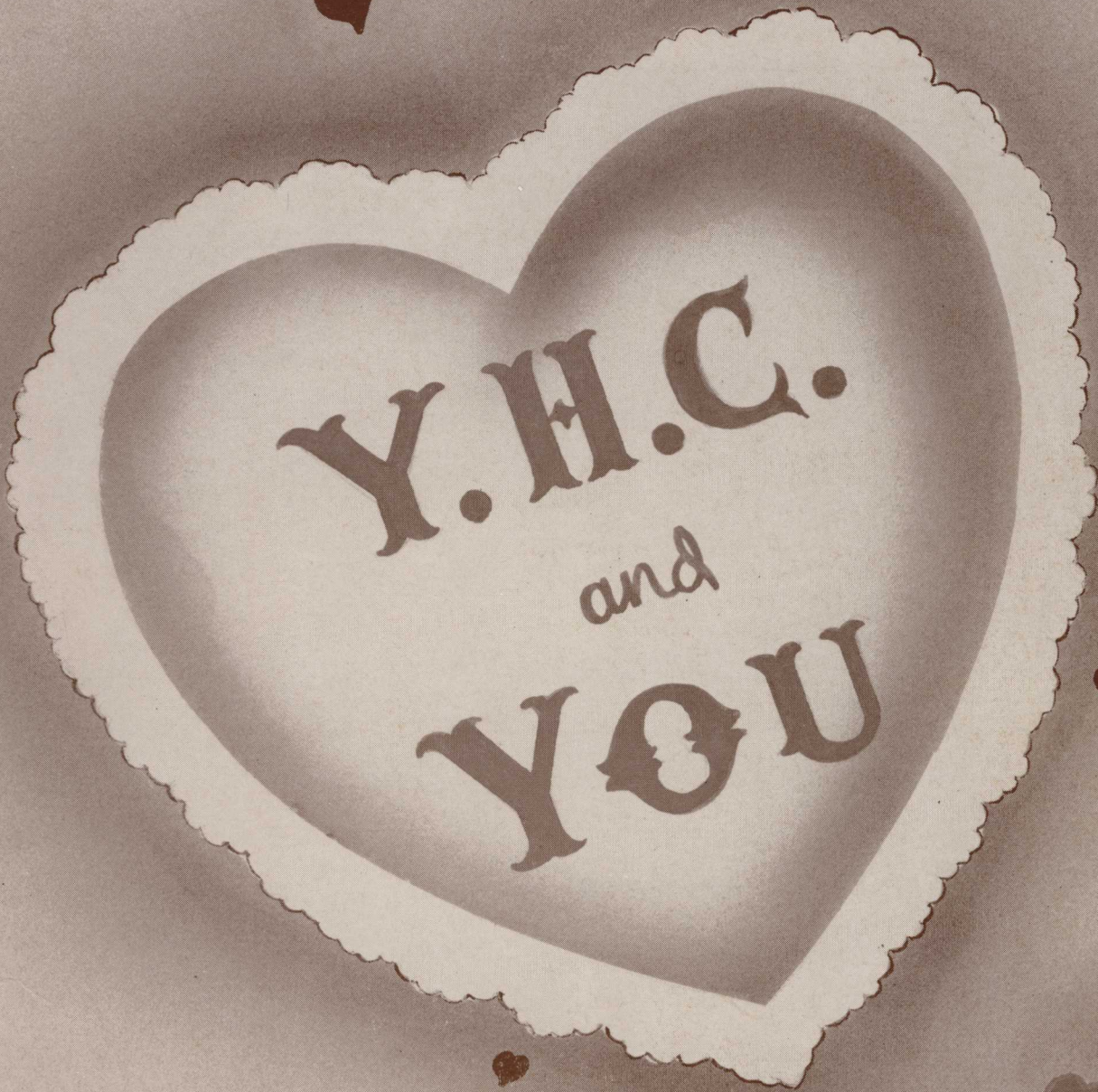
**YOUNG L. G.**

**YOUNG**

**Volume 26**

378p  
E592

# ENOTAH



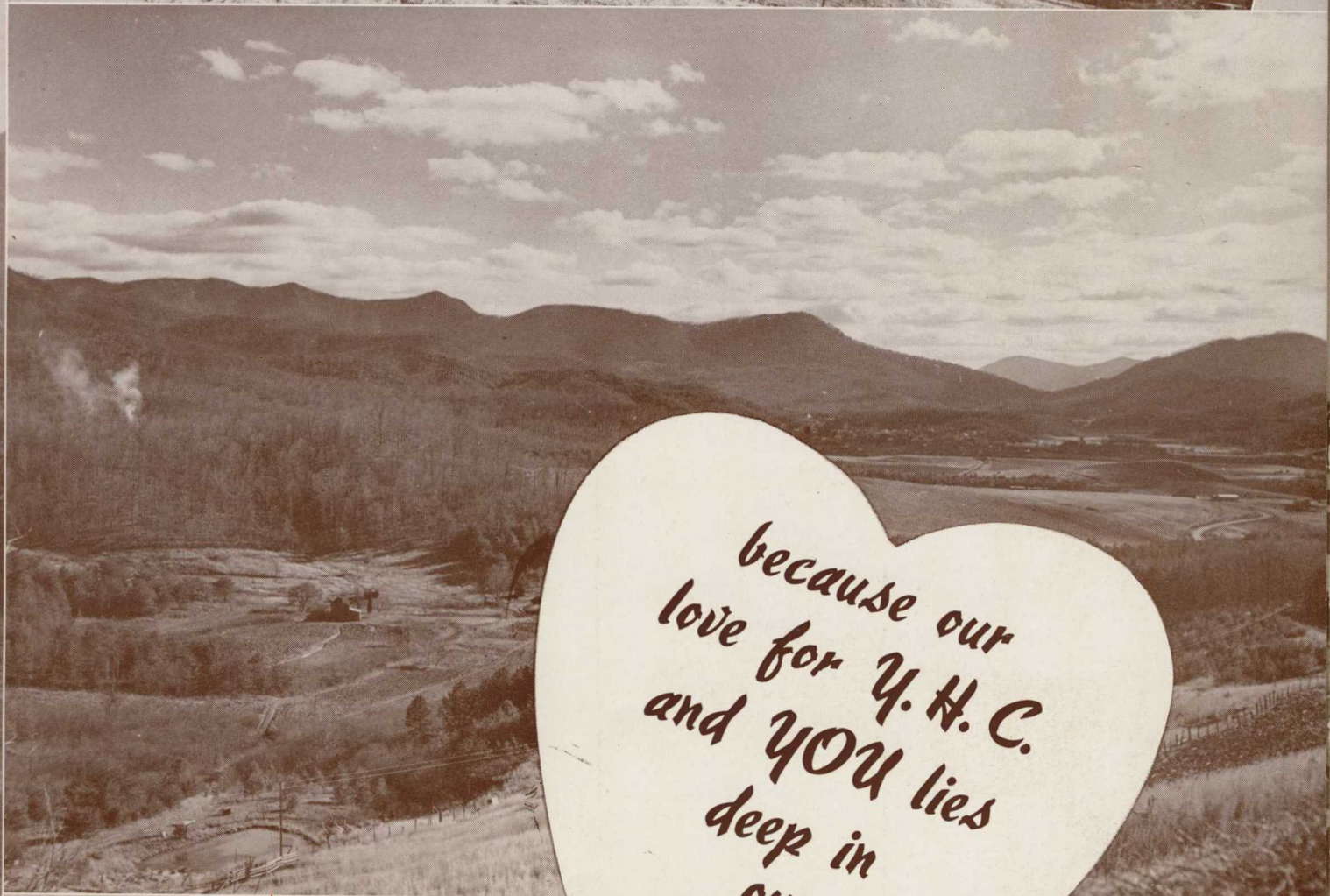
**HARRIS COLLEGE**  
**HARRIS, GEORGIA**

13233

985  
372

**PRESENTED BY**  
THE STAFF OF THE 1951 ENOTAH  
Zell Miller, Editor  
Pat Pease, Associate Editor  
Lamar Adair, Business Manager





because our  
love for Y. H. C.  
and YOU lies  
deep in  
our  
hearts



# FOREWORD

In this twenty-sixth edition of the ENOTAH we have attempted to put matter of real and lasting interest to students, faculty, and alumni.

We have tried to present evidence of that unexplainable Y. H. C. spirit that captures and holds in its grasp anyone associated with the school.

It is difficult to show all the tangible and intangible elements with which we have come in contact here and which have become embedded deep in our hearts.

But we have tried in a small way in our theme to picture those unforgettable memories that will forever lie *deep in our hearts*.



*Right: The Susan B. Harris Chapel  
Left: Sharp Memorial Methodist Church*

*Young Harris College has had a worthy past,  
and it has a promising future. In that future  
the present days will become memories . . .*



*Memories*





*memories that will always lie deep in  
our hearts. We shall  
never forget---*

*standing in line endless hours  
during registration at the Pruitt-  
Barrett Building...*



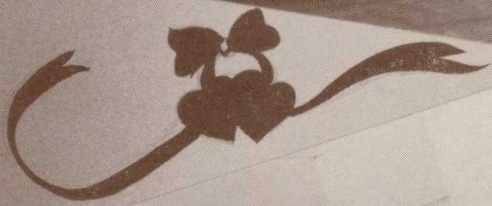


*...that first picnic at Vogel.. the Christmas party in Appleby Hall.. [Should we mention the mistletoe at the door of Willis Dobb's Hall?]*

*...the beauty of the campus in  
the rich autumn colors...*



*...four o'clock  
in the  
cafe...*



*...the rush for  
the six o'clock mail...*



Don Brown





*... the numerous times we awoke to find a blanket of snow on the campus and the mountains .. the battles with snowballs ...*

... the daily job of washing dishes .. and the added occasions when we cleared away the remains of a banquet....





*... the many "contacts" we had with brooms and mops in those dormitory rooms ...*

... the "bull sessions" in which many interesting subjects were reviewed...

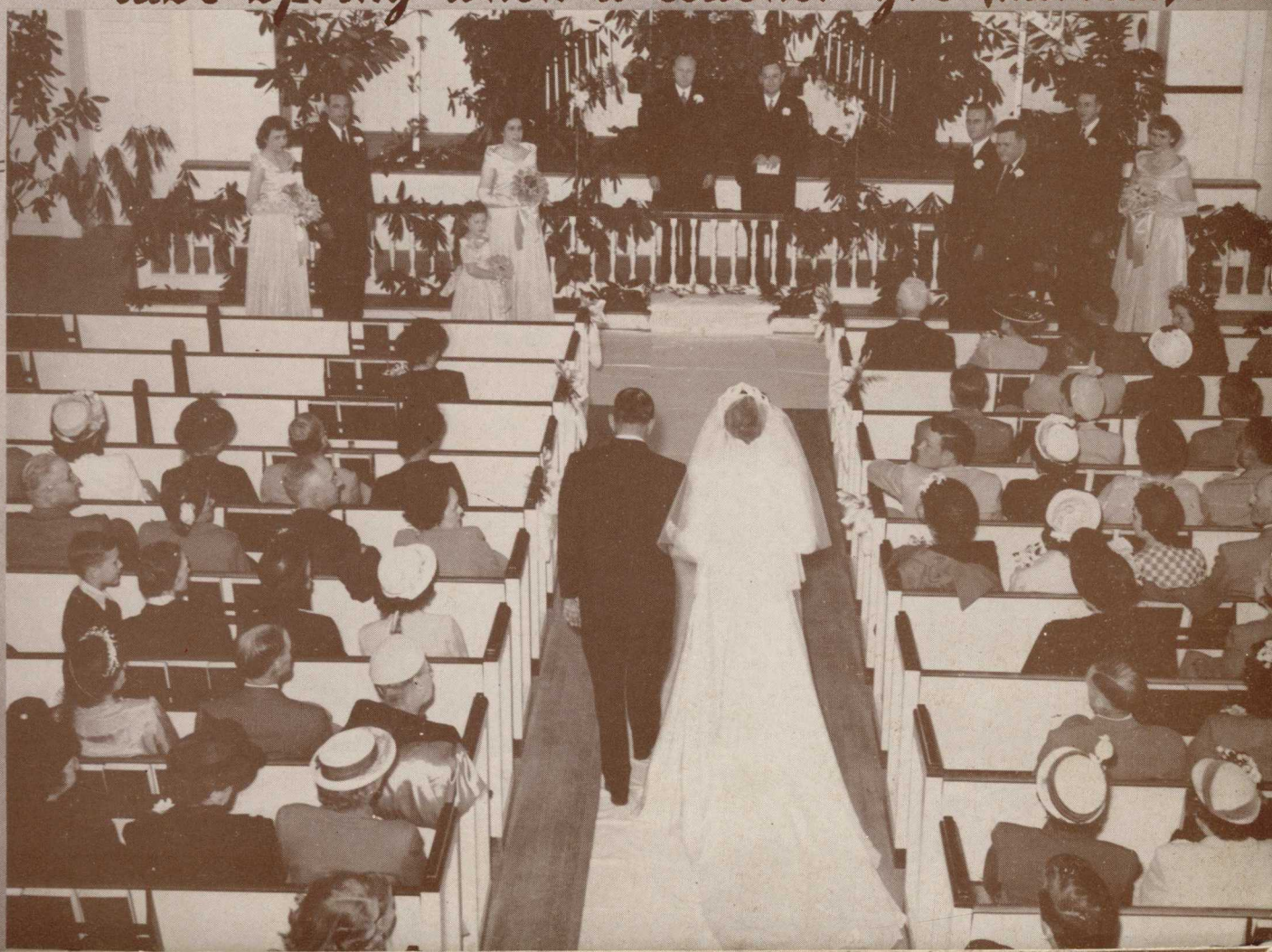
... the mad dash to the shower room just before "lights out"...





*... those practice sermons in  
the Ministerial Conference...*

*... the excitement on the campus  
last spring when a teacher got married...*





## *Alma Mater*

*In Georgia where the mountains blue  
Are pointing toward the sky,  
There stands our Alma Mater dear,  
There's where our hearts all lie.*

*We're true to thee, dear Y. H. C.  
Thy fame is our delight,  
We hail thee, Alma Mater dear,  
Thy purple and thy white.*

*Though time may pass o'er these dear halls,  
We'll still come back to thee,  
And still we'll cherish memories  
Of our days at Y. H. C.*





## DEDICATION

to

*Scott B. Appleby*

For your enthusiasm and vision combined with your wisdom and experience in promoting the betterment of Young Harris College, we as students of this institution shall be forever thankful.

So it is with appreciation and gratitude that we dedicate this, the 1951 ENOTAH, to you, Mr. Appleby.



# ADMINISTRATION





*We shall treasure deep in our hearts the memories of those teachers who have loved us, helped us, and made us see the possibilities that lie within us.*

# ADMINISTRATION

## BOARD OF TRUSTEES

SCOTT B. APPLEBY, *Chairman*

### EX-OFFICIO

CHARLES R. CLEGG  
REV. A. B. ELIZER  
BISHOP ARTHUR MOORE

### TERM EXPIRES IN 1950

F. M. BIRD	WALLACE O. DUVAL
E. M. HUDSON	H. WINTON JENKINS
ALVA G. MAXWELL	RICHARD H. RICH
E. D. RIVERS, SR.	C. B. ROMBERG
JOHN C. STILES	DR. C. B. UPSHAW
CHARLES T. WINSHIP	

### TERM EXPIRES IN 1952

SCOTT B. APPLEBY	S. F. BOYKIN
JUSTICE T. S. CANDLER	RYBURN G. CLAY
R. HOWARD DOBBS, JR.	HERBERT K. GARGES, SR.
JOHN A. MANGET	DR. FLOYD W. McRAE
A. J. STEWART	REV. J. W. VEATCH
FRED B. WILSON	W. STUART WITHAM

### TERM EXPIRES IN 1954

MARSHALL L. ALLISON	DR. H. J. AULT
DR. J. C. DOVER	FRANK DUCKWORTH
J. LON DUCKWORTH	DR. H. T. FREEMAN
MOSE GORDON	REV. PIERCE HARRIS
REV. J. W. O. MCKIBBEN	E. C. NICHOLSON
J. H. PITTARD	REV. L. M. TWIGGS



CHARLES R. CLEGG  
*President*

The Cleggs: "Charlie," "Faye," "Jean," "Bud," and Charlie Parks.



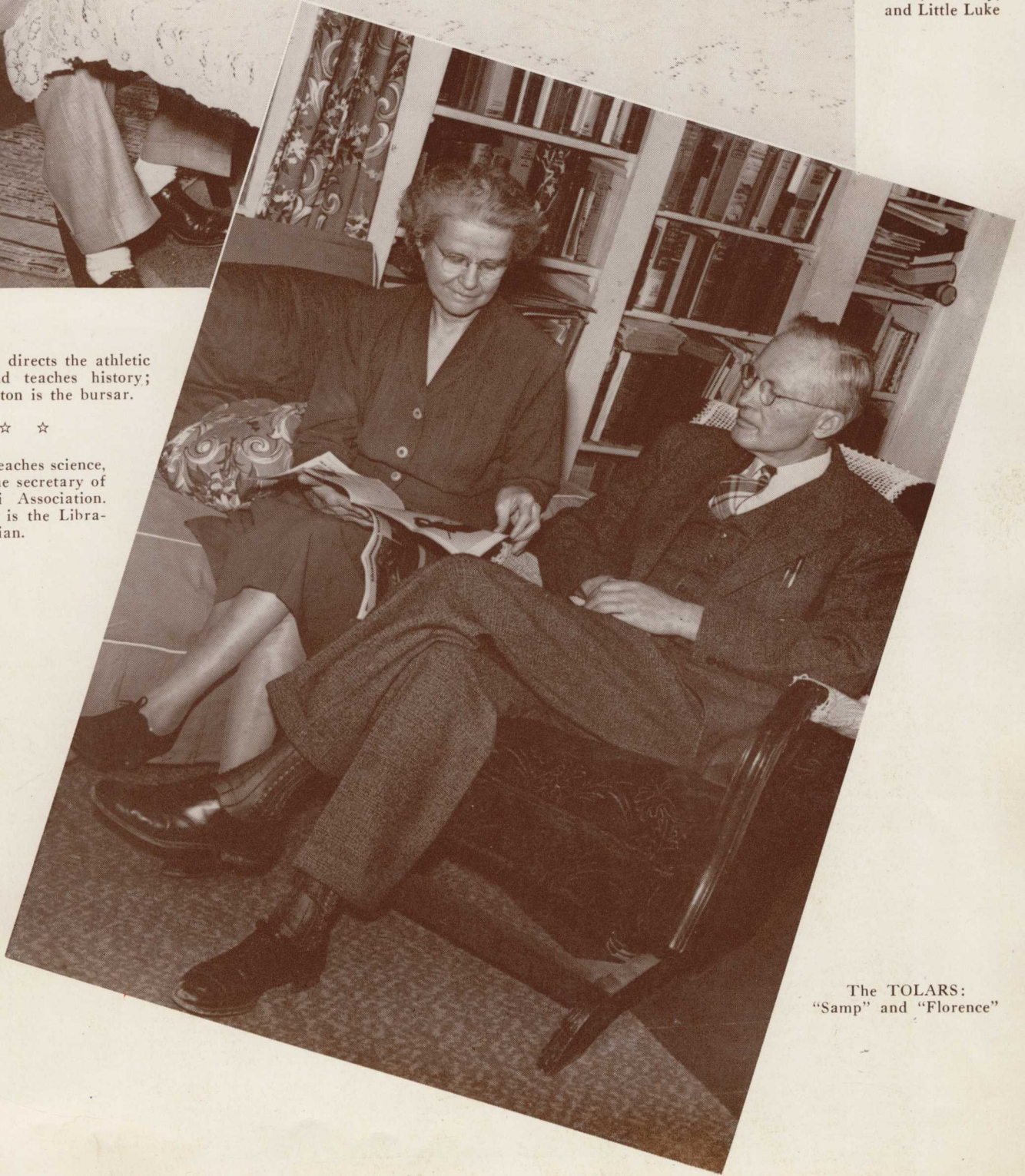


The RUSHTONS:  
"Luke," "Mary,"  
and Little Luke

Mr. Rushton directs the athletic program and teaches history;  
Mrs. Rushton is the bursar.

☆ ☆ ☆

Mr. Tolar teaches science, and he is the secretary of the Alumni Association.  
Mrs. Tolar is the Librarian.

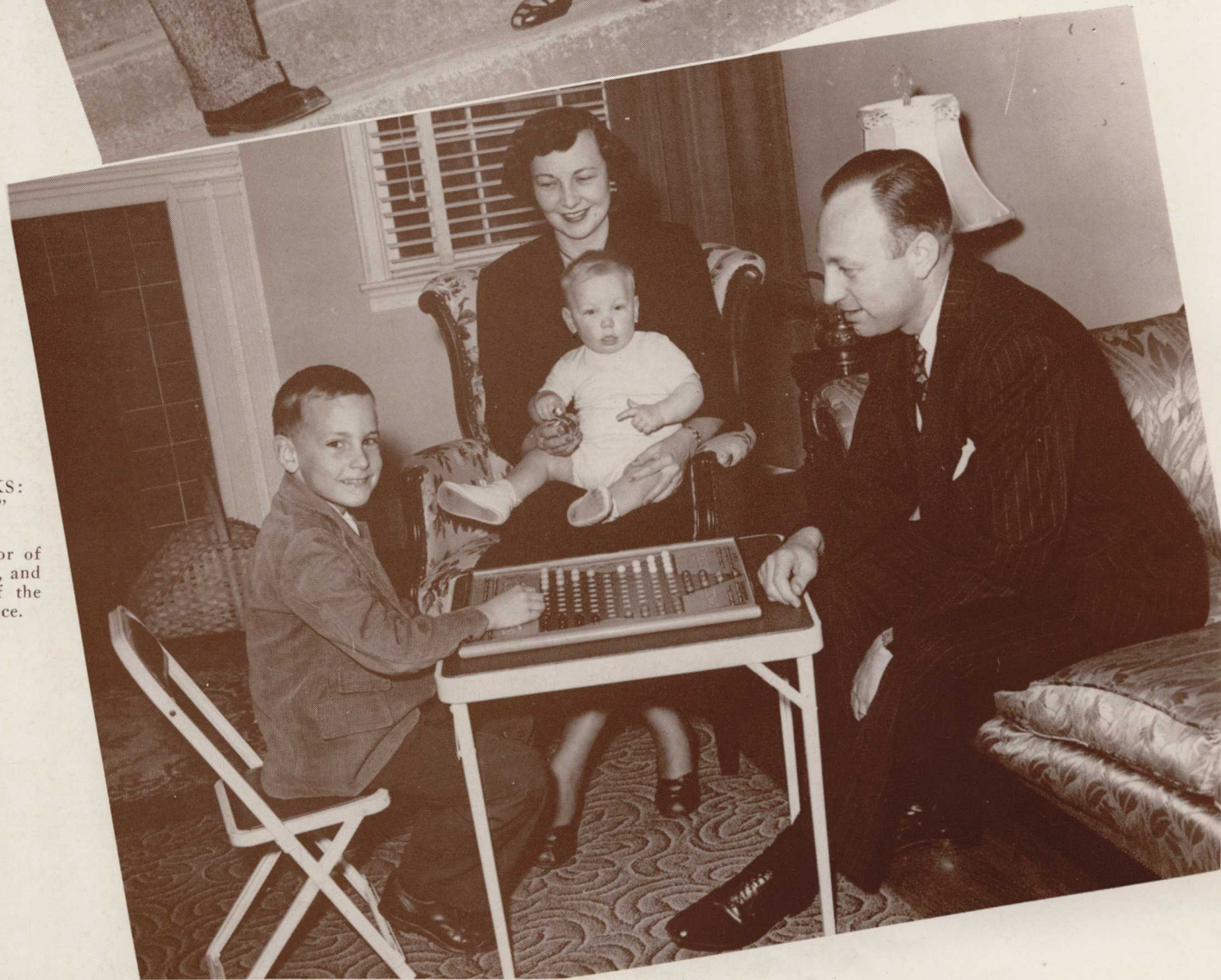


The TOLARS:  
"Samp" and "Florence"



Mr. Andress (Bob) teaches political science, advises the *Enotah Echoes* staff and the Freshman Class, and recently has been responsible for "tucking the boys in bed" in Peel Hall.

Miss Herren (Edna) teaches English and advises the ENOTAH staff and the Senior Class.



The KIRKPATRICKS:  
"Dow," "Marjorie,"  
Kippy and David.

Dr. Kirkpatrick is pastor of Sharp Memorial Church, and he directs the work of the Ministerial Conference.



*Above:* Miss McCurdy shows a Mexican serape to Mrs. Thornton and Mr. Horton. Miss McCurdy (Hilda), teaches French and Spanish, and she is faculty adviser to the Dorcas Club. Mrs. Thornton ("Miss Susie") teaches English, and she is Dean of Women. Mr. Horton (Tom) teaches commercial work, and he is the genial store-keeper at "The Little Store."

*Right:* The Cobbs: "John," "Jean," and Ted. Mr. Cobb teaches religious education and assists with the Ministerial Conference.





(Above)  
 The DOWNSSES: "Fessor" (W. L.) and "Mary" (and "Bruce"). Mr. Downs teaches education and English; Mrs. Downs teaches music, and she is the director of the Young Harris College Choir and the sponsor of the Schubert Music Club.

(Below)  
 The ATKINSES: "Laurence" and "Nona." Mr. Atkins is registrar of the College, and he teaches mathematics and crafts. Mrs. Atkins has charge of the dining room.





Miss Harrison (Lura) presents a cake to Mr. Mann ("Fessor Mann" or "Uncle Bud") (W. S.) on his birthday, March 10. Miss Harrison teaches history, and she is faculty adviser for the International Relations Club. Mr. Mann teaches mathematics.

\*\*\*



Miss Spencer (Denney Wells) is probably trying to get Mr. Humphreys ("Hump") (Claude) to donate to the Young Harris Campaign. Miss Spencer is secretary to Dr. Kirkpatrick during this campaign. Mr. Humphreys teaches mathematics, and he is the sponsor of the Camera Club.



The MYERSES: "Mac," "Wilma," and Sara Jean. Mr. Myers teaches crafts, and he is superintendent of buildings and grounds. Mrs. Myers teaches English and assists with the work of the *Enotah Echoes*.

Miss Austin (Roxanna) and Miss Chappell (Cornelia) with "Harvey, Jr." and a perky giraffe. Miss Austin directs the work of the Towns-Union Regional Library, and she is faculty adviser for the Susan B. and Young Harris Societies. Miss Chappell teaches home economics and public school art. She is faculty adviser for the Alpha Psi Club and the Young Ladies Circle.





Reverend Jack Waldrep ("Brother Jack") teaches religious education and works with the Ministerial Conference. Mr. Saunders (W. E.) teaches science.

Among those who work at the Young Harris Clinic assisting Dr. W. F. Tanner are Mrs. C. W. Waters, Mrs. Mary Hill (R. N.), and Miss Annie Mae Keener. (In case you don't recognize her, the "patient" is Ruth Willard.)



# CLASSES

The Ministerial Conference play  
cast for "An Old-Fashioned  
Mother"



*We shall never forget how difficult it was  
to keep up with class work when there was  
always play practice the night before!*

*From Home Ec*  
(Rich Building)



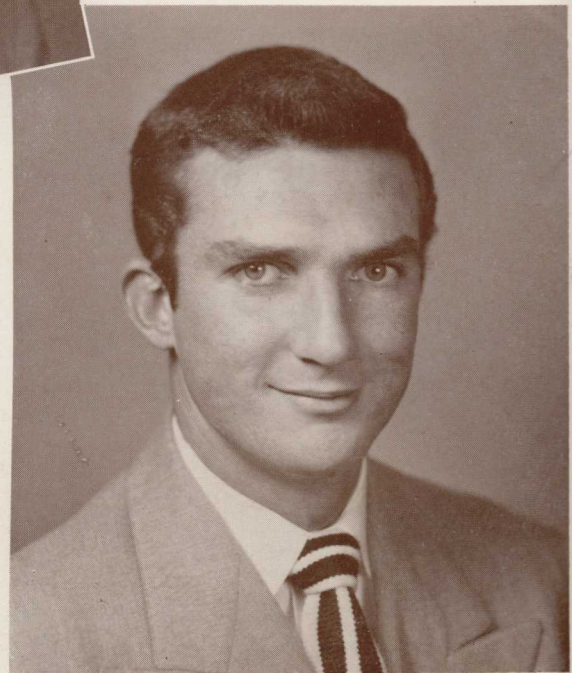
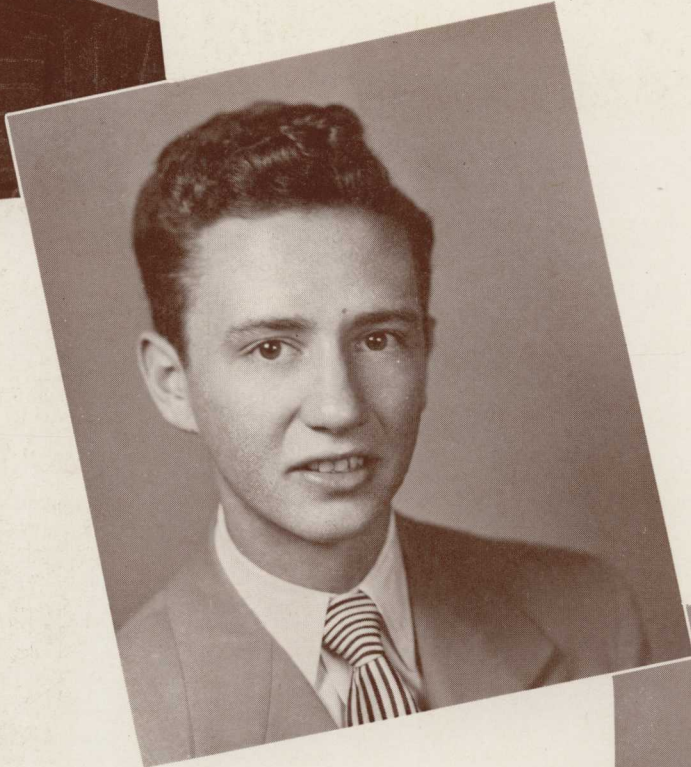
*To Science*  
(Reid Building)



*To History*  
(Sharp Hall)



# SENIOR CLASS



## OFFICERS

- MAURICE MOORE . . . . . *President*  
 EDGAR JENKINS . . . . . *Vice-President*  
 JAMES HUTTO . . . . . *Secretary-Treasurer*  
 MISS EDNA HERREN . . . . . *Faculty Adviser*

MAURICE "BUD" MOORE  
 Atlanta, Ga.

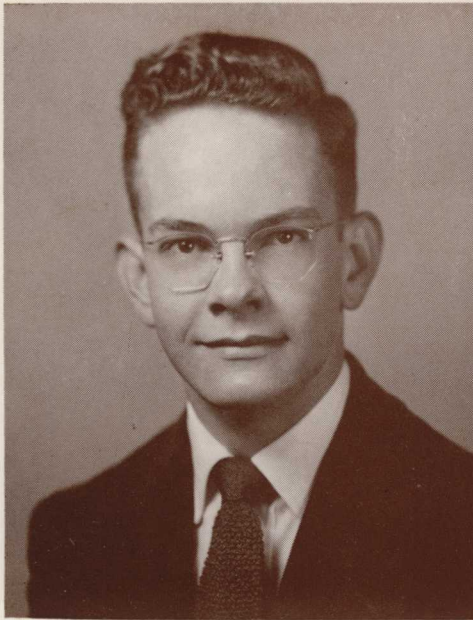
Senior Class President; M. S. F.,  
 President; Spat Club; Student  
 Council; Choir.

EDGAR JENKINS  
*Phi Chi*  
 Blairsville, Ga.

Phi Chi, Reporter; Spat Club,  
 Treasurer; Senior Class Vice-Pres-  
 ident; I. R. C.; ENOTAH Staff,  
 Advertising Manager.

JAMES HUTTO  
*Phi Chi*  
 Fort Valley, Ga.

Phi Chi, Vice-President, Football  
 Coach; Spat Club, Vice-President;  
 Senior Class Secretary; Dormitory  
 Marshall; Varsity Basketball, Cap-  
 tain; All-State Center, Georgia Junior  
 College Tournament; All-Tournament  
 Center, Southern Tech Invitational  
 Tournament.



ADAIR

LAMAR ADAIR  
Y. H. D. S.  
Atlanta, Ga.

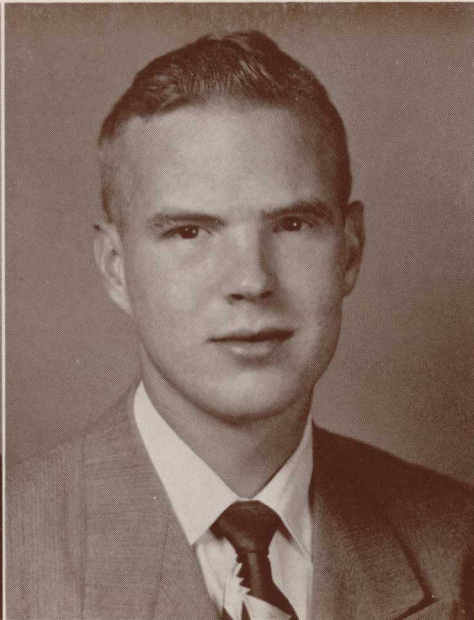
Y. H. D. S., Reporter, Treasurer; ENOTAH, Business Manager; *Enotah Echoes*, Circulation Manager; Peel Hall Council.

PAUL W. AGNEW, JR.  
*Phi Chi*  
Atlanta, Ga.

*Phi Chi* Critic, Chaplain; I. R. C.; Peel Hall Council; Ministerial Conference; ENOTAH, Advertising Manager.

BETTY LOU ANDREWS  
*Susan B.*  
Deepstep, Ga.

Young Ladies Circle, President; *Enotah Echoes*, Alumni Editor; M. S. F. Council; Ministerial Conference.



AGNEW

CHESTER AUSTIN, JR.  
*Phi Chi*  
Ringgold, Ga.

*Phi Chi*, Secretary, President; Veterans' Club, Secretary, Vice-President; Spat Club, Secretary; Commercial Club, Treasurer; Student Council; Varsity Basketball.

MARTHA AXLEY  
*Susan B.*  
Murphy, N. C.

*Susan B.*, Vice-President; Student Council; Young Ladies Circle; Commercial Club, Secretary; Choir; Schubert Music Club, Secretary; *Enotah Echoes* Staff.

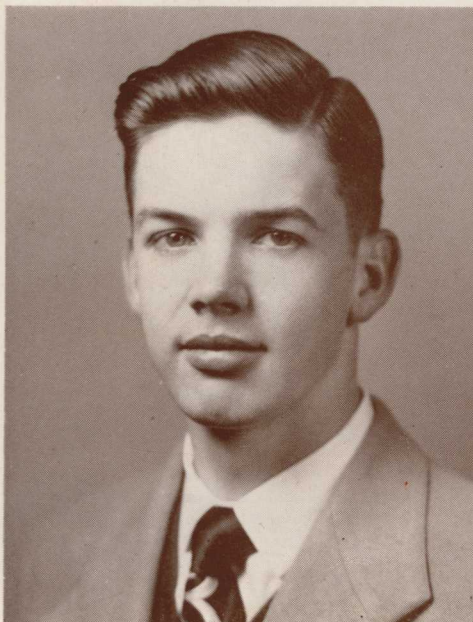
PEGGY SUE BARFIELD  
*Susan B.*  
Milledgeville, Ga.

Young Ladies Circle.

ROBERT DAVIS BARLOW  
Y. H. D. S.  
Cairo, Ga.

Y. H. D. S., Basketball, Football, Solicitor General, Champion Debater, 1950, 1951; I. R. C.; Student Council; *Enotah Echoes*.

BARLOW



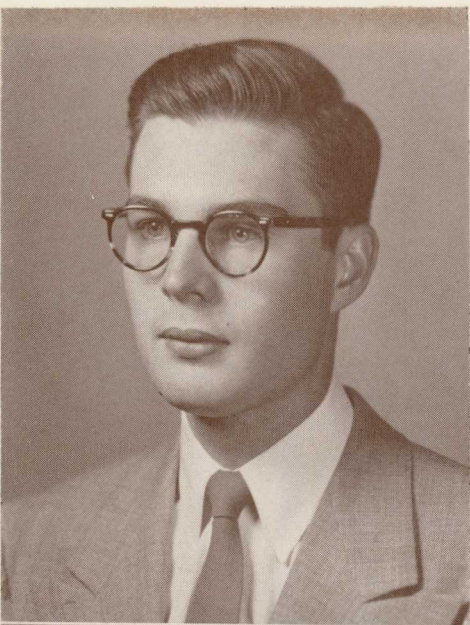
BARFIELD



ANDREWS



AUSTIN  
AXLEY



BARNES  
BENTLEY  
BRUCE

CHANDLER



COOPER

TRAVIS BARNES  
*Y. H. D. S.*  
Augusta, Ga.

Ministerial Conference, Bishop, District Superintendent; M. S. F. Council; State M. S. M. Vice-President; Y. H. D. S., Chaplain, Sergeant-at-Arms, Washington Day Speaker; Student Council; Choir; I. R. C.

MILDRED BENTLEY  
*Phi Delta*  
Tallapoosa, Ga.

*Enotah Echoes*, Editor, Associate Editor; ENOTAH, Secretary; Schubert Music Club, Vice-President, Reporter; Ministerial Conference; M. S. F. Council; Young Ladies Circle; Commercial Club, President; Alpha Psi; Phi Delta, Sergeant-at-Arms, Vice-President.

EDNA VIRGINIA BRUCE  
*Phi Delta*  
Hemp, Ga.

Phi Delta, Chaplain; Dorcas, Chaplain; Schubert Music Club; I. R. C.; Young Ladies Circle.

CHEELY



COWART

JESSIE CHANDLER  
*Phi Delta*  
Gainesville, Ga.

I. R. C.; Alpha Psi.

DALE CHEELY  
*Y. H. D. S.*  
Williston, Fla.

Schubert Music Club.

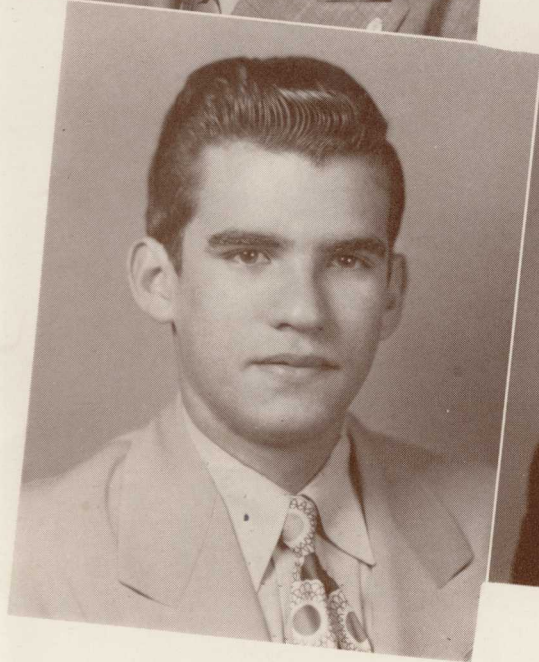
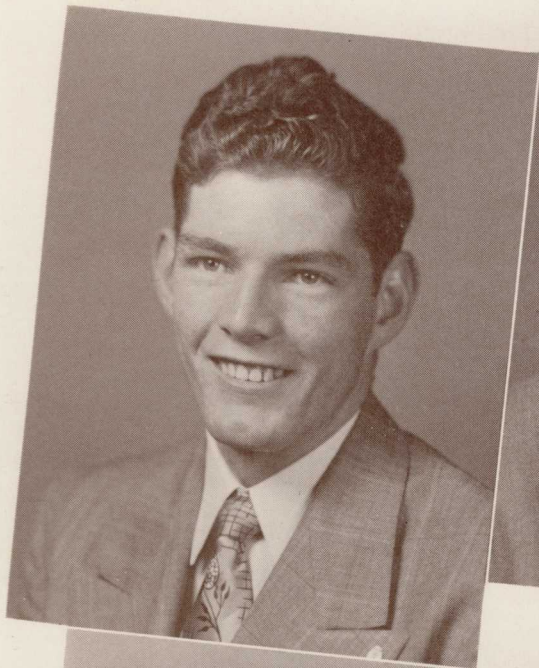
MASTON COOPER  
*Y. H. D. S.*  
Faceville, Ga.

Supreme Court; I. R. C.

DAVID MORRILL COWART  
*Y. H. D. S.*  
Thomaston, Ga.

Ministerial Conference, District Superintendent; Y. H. D. S., Champion Debater; Choir; I. R. C.

CROSBY



DEL RIO

CARROLL CROSBY  
Waycross, Ga.

Ministerial Conference, Bishop; M. S. F. Council.

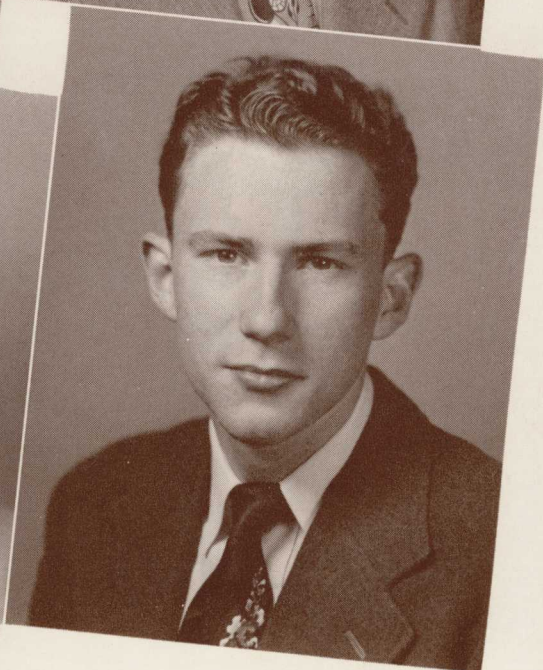
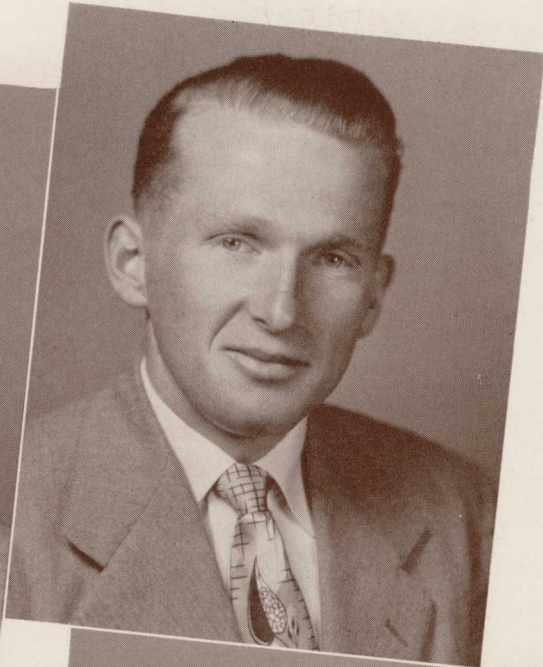
TRUETT CRUMLEY  
*Phi Chi*  
Blairsville, Ga.

Phi Chi, Chaplain; I. R. C.

EDUARDO DEL RIO  
*Y. H. D. S.*  
Habana, Cuba  
Commercial Club.

PAUL DRAKE  
*Y. H. D. S.*  
Crawfordville, Ga.  
Schubert Music Club.

CRUMLEY



DRAKE

JEANNINE ENGLISH  
*Susan B.*  
Hephzibah, Ga.

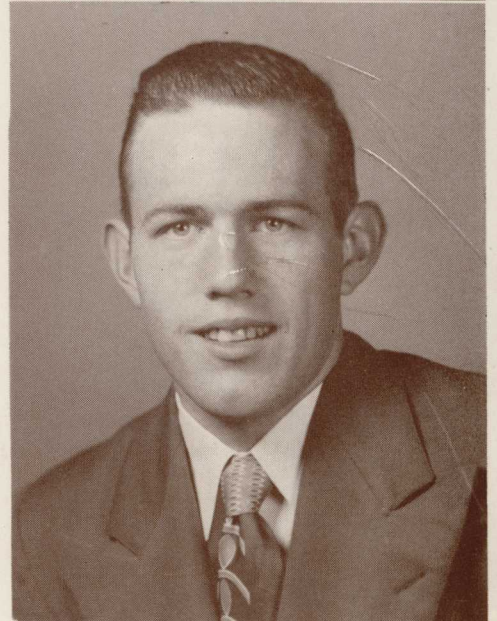
Student Council; Choir; M. S. F. Council, Treasurer; Ministerial Conference; Commercial Club; Young Ladies Circle; Alpha Psi; *Enotah Echoes*, Feature Editor.

BOBBY FITZPATRICK  
*Y. H. D. S.*  
Summerville, Ga.

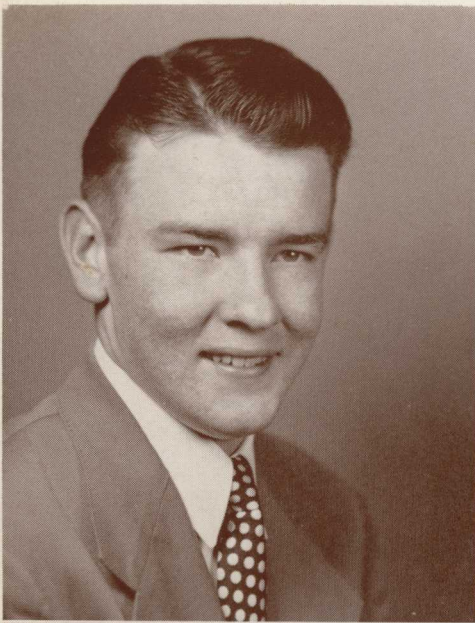
*Y. H. D. S.*, Football, Basketball.

JOHNNIE SUE FREEMAN  
*Susan B.*  
Commerce, Ga.

Student Council; Dorcas, Corresponding Secretary.



ENGLISH  
FITZPATRICK  
FREEMAN.



BOB GARY  
Y. H. D. S.  
Atlanta, Ga.

Y. H. D. S., President, Critic, Baseball, Football; Ministerial Conference, Bishop; I. R. C., President; President of Freshman Class; President of Sunday School Class; Songleader; M. S. F. Council; Spat Club; Music Club; *Enotah Echoes*, Business Manager; Student Council.

JOHNNY GIBSON  
Y. H. D. S.  
Ranger, N. C.

Y. H. D. S., Chaplain, Cheerleader; I. R. C., Inquiring Reporter, Reporter; Ministerial Conference; ENOTAH Staff; *Enotah Echoes*, Associate Circulation Manager.

MARIA DEL CARMEN GUTIERREZ  
*Phi Delta*  
Sagua la Grande, Cuba

Schubert Music Club; Choir; Alpha Psi; Commercial Club; Camera Club; Ministerial Conference; ENOTAH Staff; *Enotah Echoes*; Young Ladies Circle, Reporter.

HUBERT HANDY  
Young Harris, Ga.

JAMES HELTON  
Y. H. D. S.  
Culberson, N. C.

ENOTAH Staff; I. R. C.; Y. H. D. S., Reporter, Football.

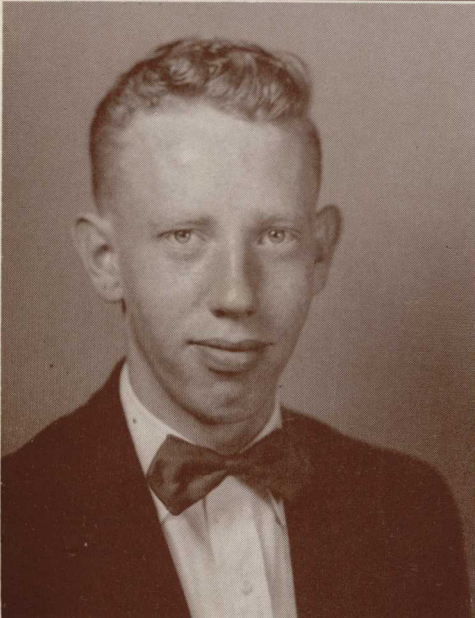
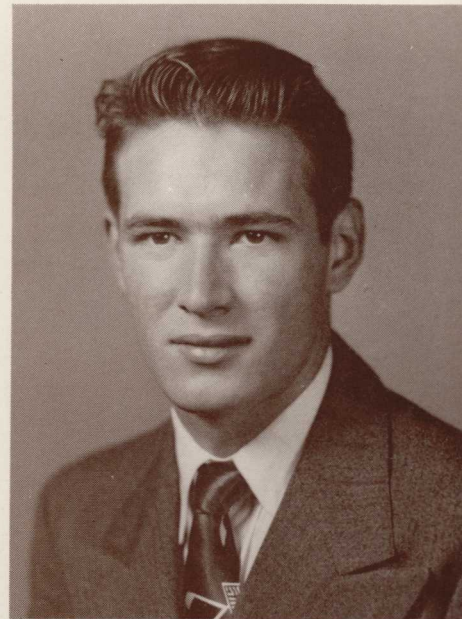
ANNE HEMPHILL  
*Susan B.*  
Toccoa, Ga.

Alpha Psi, Vice-President; I. R. C.; Young Ladies Circle; Student Council; Commercial Club.

JAMES ISRAEL  
Y. H. D. S.  
Byron, Ga.

Y. H. D. S., Football, Basketball; Commercial Club; Camera Club.

ISRAEL  
HEMPHILL  
HELTON

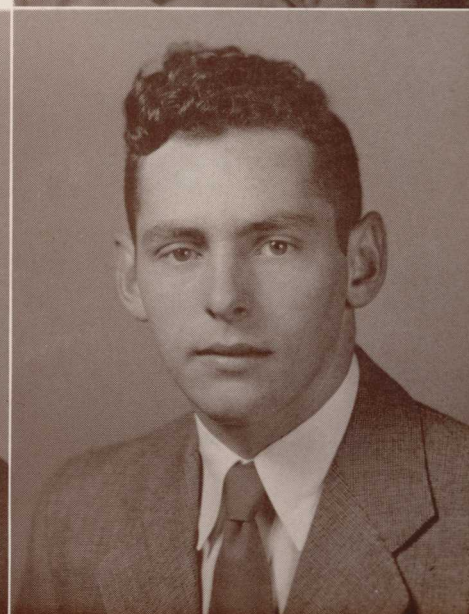


GARY  
GIBSON



GUTIERREZ

HANDY



JOHNSON  
KNIGHT  
LANGFORD



BETTY JEAN JOHNSON  
Thomson, Ga.

*Enotah Echoes*, Society Editor; ENOTAH, Literary Editor; Dorcas, Chaplain, Vice-President; Young Ladies Circle; Commercial Club, Vice-President, President; M. S. F. Council, Secretary; Student Council, Secretary.

MARY KNIGHT  
*Phi Delta*  
Flowery Branch, Ga.

Phi Delta, Sergeant-at-Arms, Basketball; Camera Club, Secretary; Choir.

BETTY LANGFORD  
*Susan B.*  
Commerce, Ga.

Susan B., Cheerleader; ENOTAH; *Enotah Echoes*; Alpha Psi; Young Ladies Circle, Treasurer; Commercial Club; I. R. C.

JOYCE LYNCH  
*Phi Delta*  
LaGrange, Ga.

Phi Delta, Chaplain, Reporter, Cheerleader, Vice-President, President; Ministerial Conference, Secretary and Treasurer; Dorcas, Vice-President, President; ENOTAH, Promotions Manager; *Enotah Echoes*, Business Manager; Young Ladies Circle; Alpha Psi; I. R. C., Treasurer; M. S. F. Council; Choir; Varsity Cheerleader.

GENE MCCONNELL  
Macon, Ga.

Student Council, Solicitor General; Veterans' Club, Secretary, Vice-President.

BARBARA McDARRIS  
*Phi Delta*  
Hemp, Ga.

Dorcas, Treasurer; Phi Delta, Treasurer.

BETTY McMILLIN  
*Phi Delta*  
Milledgeville, Ga.

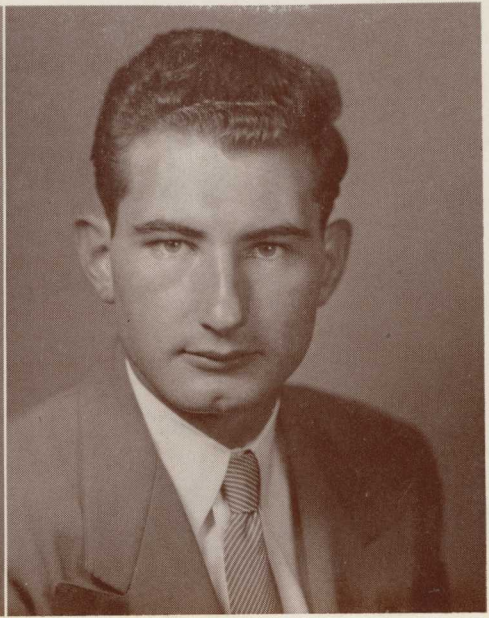
Phi Delta, Sergeant-at-Arms; Commercial Club, Secretary; I. R. C.; *Enotah Echoes*; Young Ladies Circle.

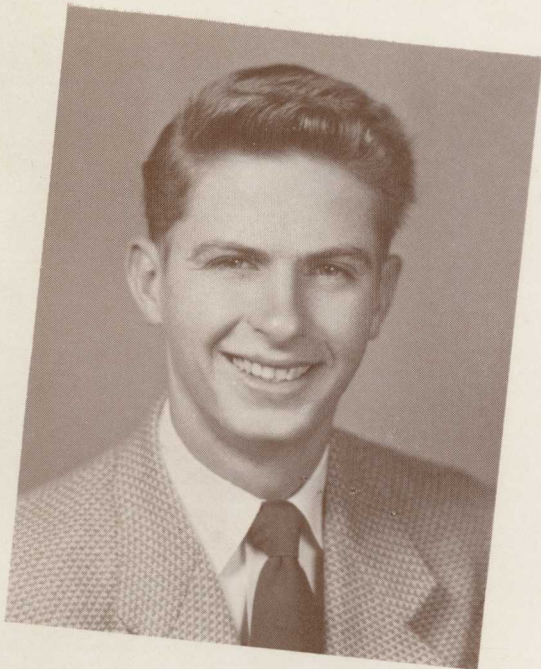


McDARRIS  
McMILLIN

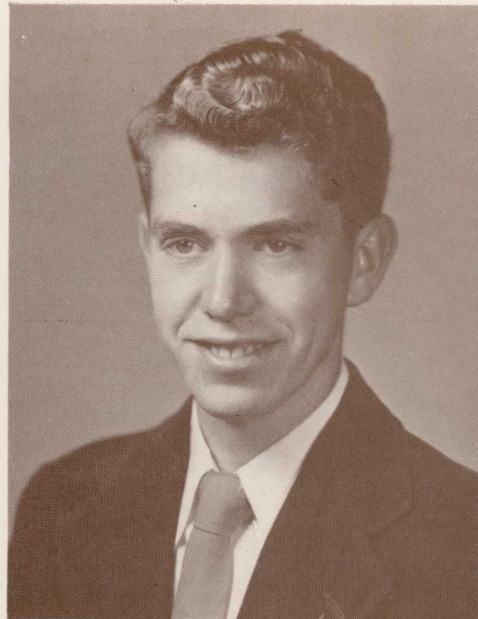
LYNCH

MCCONNELL

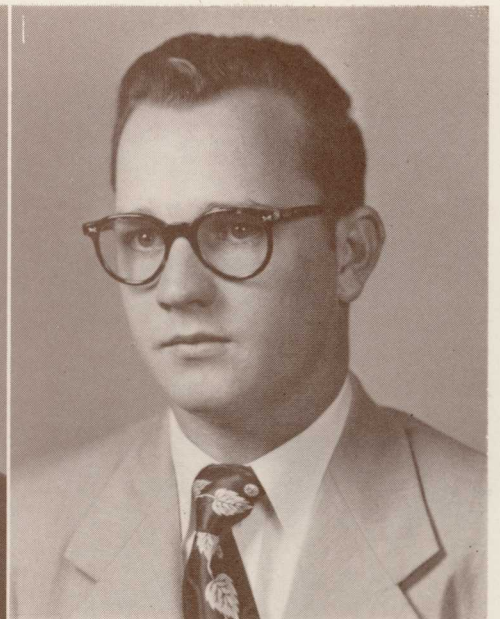




F. PALMER



J. PALMER



ZELL BRYAN MILLER  
*Phi Chi*  
Young Harris, Ga.

Phi Chi, President, Champion Debater, 1948, 1949, 1950, 1951, Washington Day Speaker, Solicitor General, Sergeant-at-Arms, Critic, Sentinel, Football, Softball, Baseball Captain, Basketball Captain; ENOTAH, Editor, Associate Editor; *Enotah Echoes*, Editor; Spat Club, President; High School Senior Class President.

tendent; Schubert Music Club, Vice-President; Choir; ENOTAH; *Enotah Echoes*; I. R. C., Parliamentarian; M. S. F. Council, Vice-President; Varsity Cheerleader, Captain.

MARTHA PRINCE  
*Susan B.*  
Morganton, Ga.

Alpha Psi.



FELIX PALMER  
*Y. H. D. S.*  
Murphy, N. C.

Music Club, Treasurer; I. R. C.; Camera Club.

MARY PRINCE  
*Susan B.*  
Morganton, Ga.

Alpha Psi, President; I. R. C.

JACK C. PALMER  
Hayesville, N. C.

GRADY PARRISH  
*Y. H. D. S.*  
Columbus, Ga.

Ministerial Conference, District Superin-

MARVIN PULLIAM  
*Y. H. D. S.*  
Elberton, Ga.

I. R. C., Vice-President; *Enotah Echoes*, Associate Editor; *Y. H. D. S.*, Reporter, Secretary; M. S. F. Council, Publicity Chairman; ENOTAH; Commercial Club; Ministerial Conference.

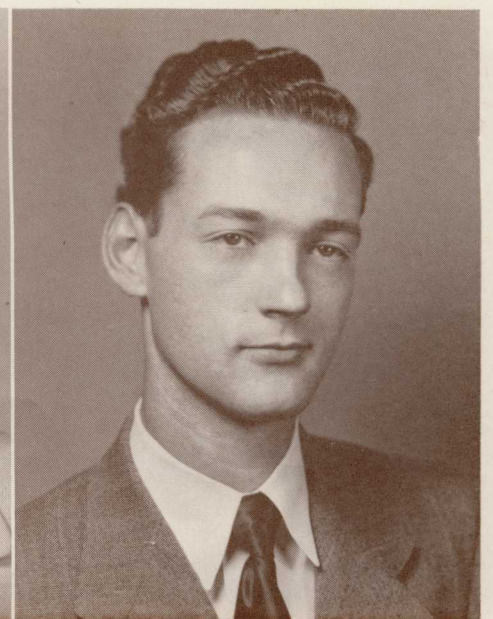


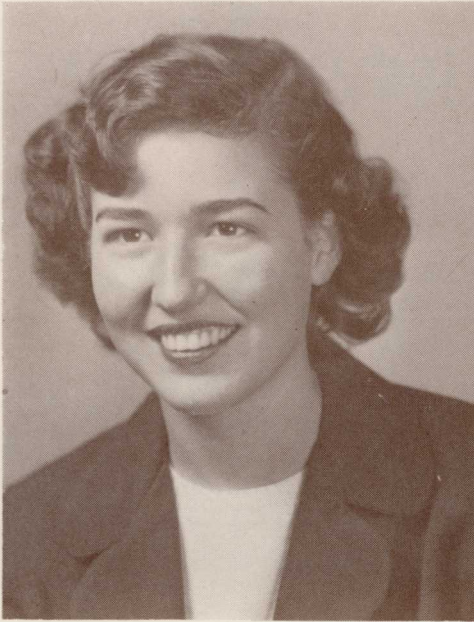
MILLER  
PARRISH  
MARTHA PRINCE

MARY PRINCE



PULLIAM





PURVIS

EUNETTA PURVIS  
*Susan B.*  
Tallapoosa, Ga.

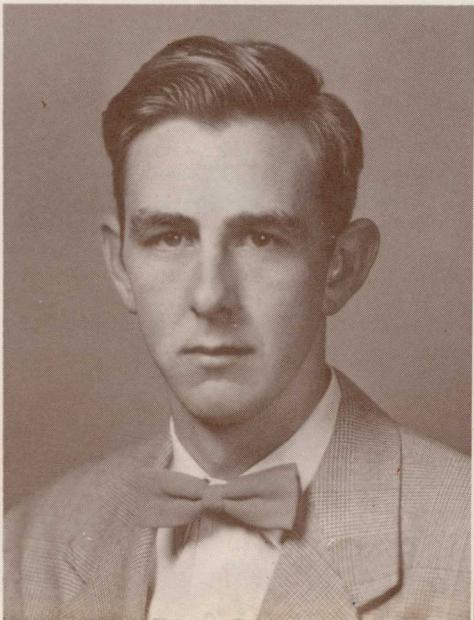
Susan B., Reporter, Librarian; Choir; Schubert Music Club, Treasurer, President; I. R. C.; ENOTAH Staff; *Enotah Echoes* Staff; Young Ladies Circle; Alpha Psi, Reporter; Dorcas Club.

MARY VIRGINIA RHINEHART  
Young Harris, Ga.

ROBERT RIGSBY  
*Y. H. D. S.*  
Warner Robins, Ga.

Y. H. D. S., Vice-President, Basketball, Cheerleader; Secretary-Treasurer of Freshman Class; Schubert Music Club, Secretary; I. R. C., President, Parliamentarian; *Enotah Echoes* Staff; ENOTAH, Promotions Manager; Student Council; Varsity Cheerleader; Camera Club; Ministerial Conference.

SHORT



RHINEHART

THELMA ROBERTS  
*Susan B.*  
Buford, Ga.

Susan B., Secretary; Young Ladies Circle, Secretary; Student Council.

RICHARD "RED" ROSS  
*Phi Chi*  
Ringgold, Ga.

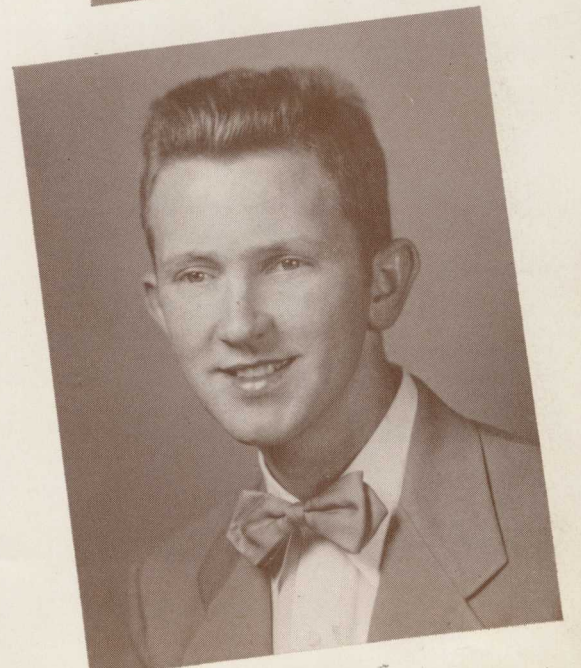
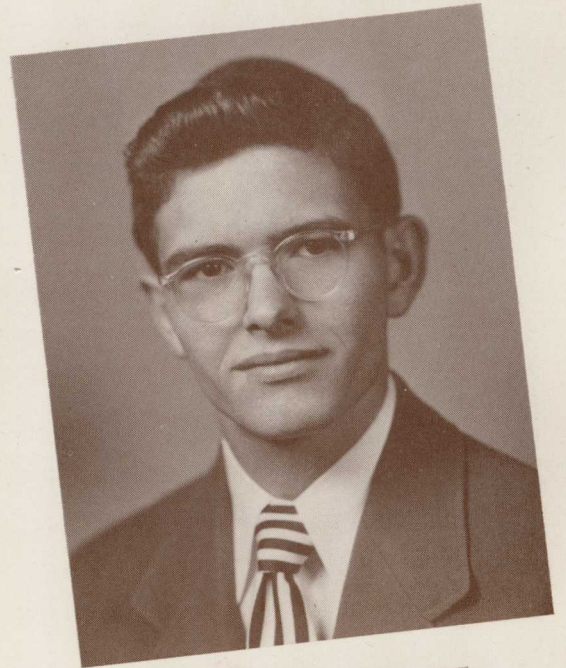
Phi Chi, Football, Baseball, Softball; Spat Club, Treasurer; Varsity Basketball; Student Council.

MRS. DOROTHY SAMPSON  
Young Harris, Ga.

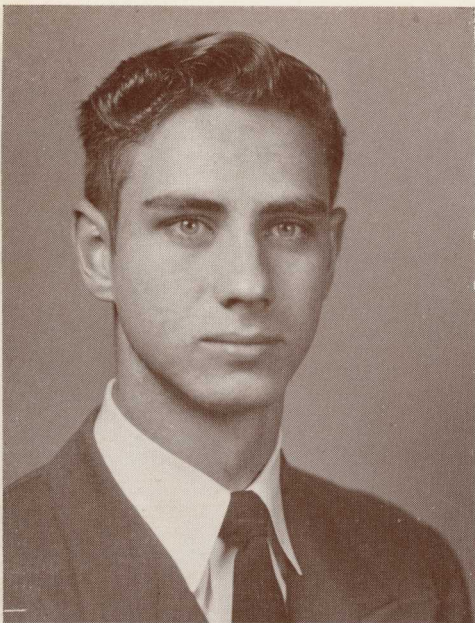
CHARLES R. SHORT  
*Phi Chi*  
Clayton, Ga.

Phi Chi, Sentinel, Secretary, Football, Baseball, Softball; Varsity Basketball; All-State Forward, Georgia Junior College Tournament.

SAMPSON



RIGSBY  
ROBERTS  
ROSS



LERROY SMITH  
Y. H. D. S.  
Bremen, Ga.

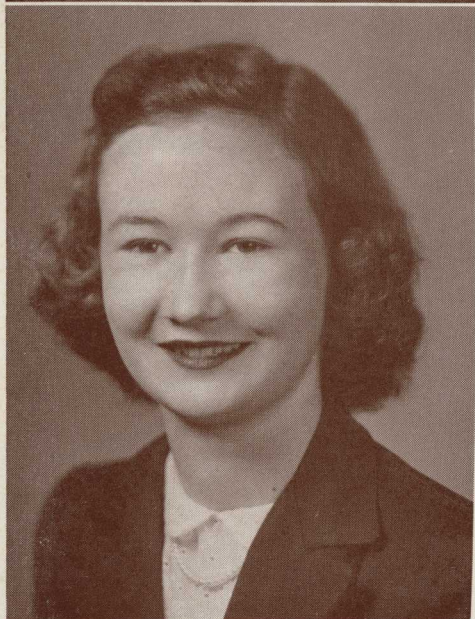
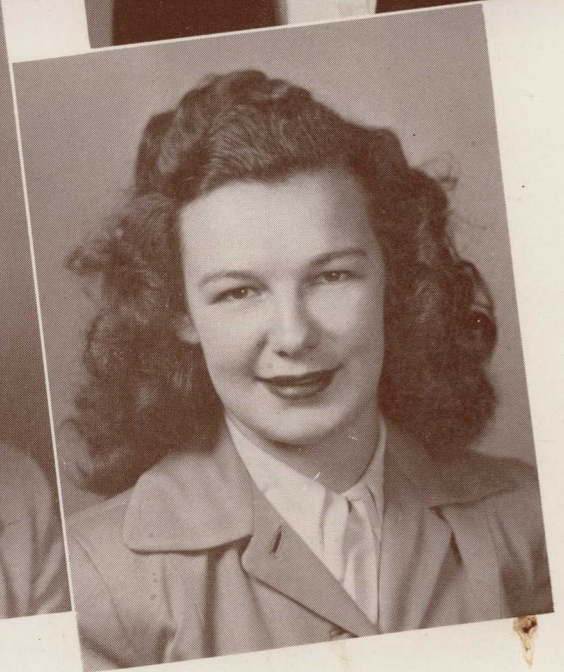
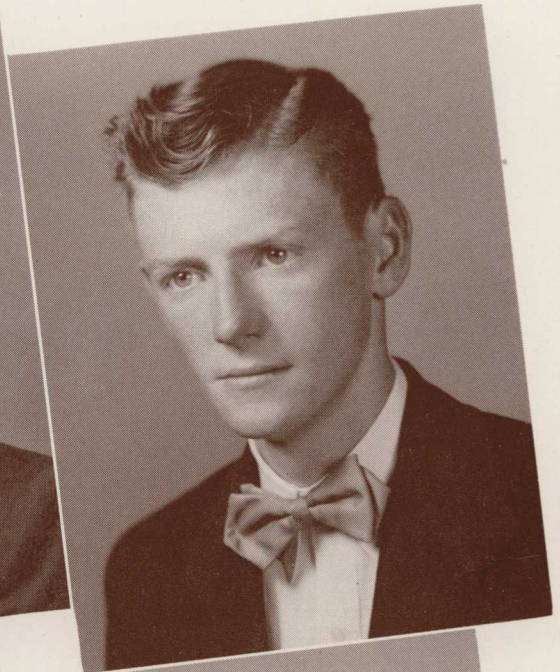
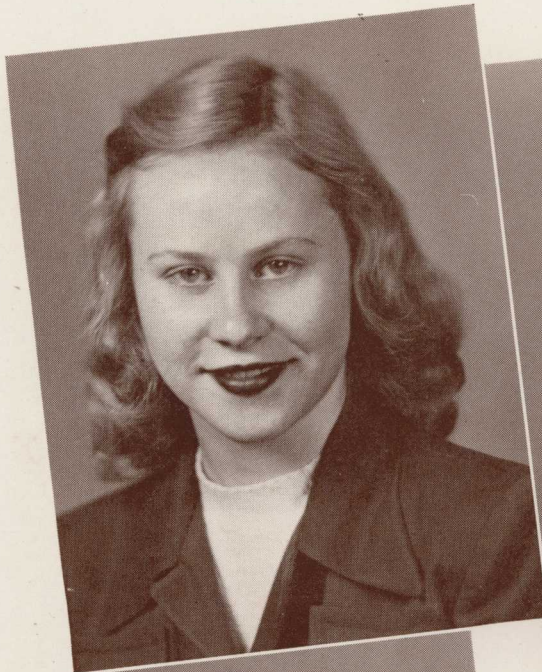
Student Council, President; Y. H. D. S.,  
Sergeant-at-Arms, President, Basketball,  
Baseball, Football, Softball; Ministerial  
Conference; Choir.

MILDRED SPEIR  
Phi Delta  
Dawson, Ga.

Phi Delta, Vice-President, President, Bas-  
ketball; Alpha Psi, President; Dorcas  
Club, President; Student Council; Apple-  
by House Council.

STONE

STYLES



SMITH  
SPEIR  
STEWART

TATUM

TAYLOR

LILLIAN STEWART  
Phi Delta  
Mineral Bluff, Ga.

JEANETTE TATUM  
Susan B.  
White, Ga.

Phi Delta, Secretary, Basketball; Dorcas  
Club, Reporter; Alpha Psi; Schubert  
Music Club.

Susan B., Chaplain, President; Alpha Psi,  
Chaplain; Dorcas, Treasurer; Young  
Ladies Circle, Vice-President; Appleby  
Hall Council, President; Vice-President  
of Student Government; Ministerial Con-  
ference; M. S. F. Council; I. R. C.,  
Reporter.

PEGGY STONE  
Susan B.  
Fairburn, Ga.  
Young Ladies Circle.

BILL STYLES  
Y. H. D. S.  
Dawsonville, Ga.

MRS. JEAN TAYLOR  
Hiawassee, Ga.

JAMES TEAL  
*Phi Chi*  
 Hiram, Ga.

Spat Club; *Phi Chi*, Football, Baseball,  
 Sentinel, Sergeant-at-Arms.

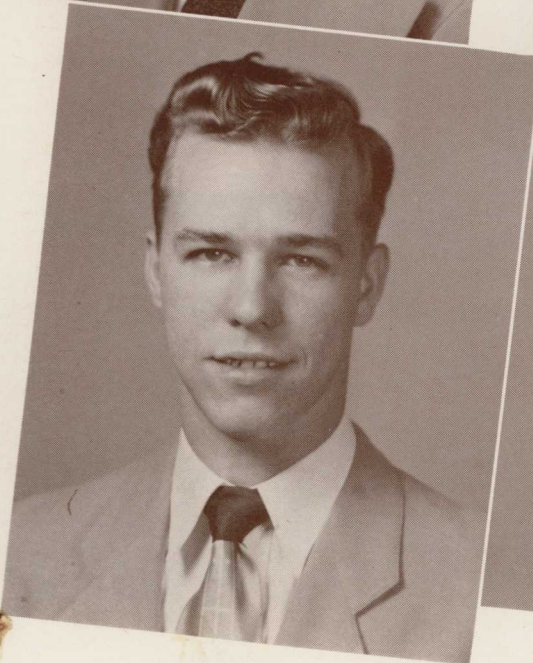
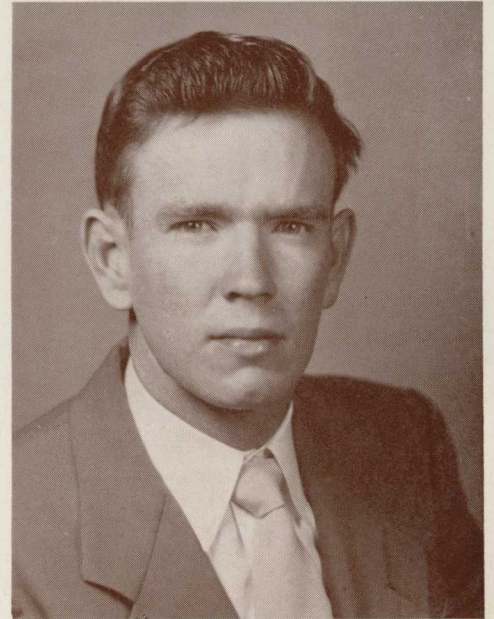
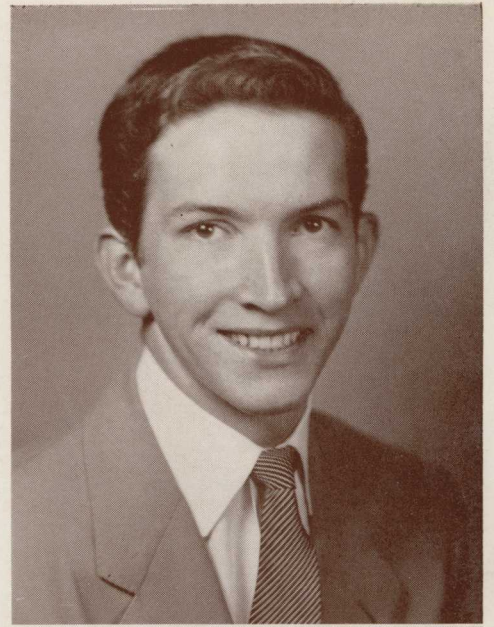
TEAL



HAZEL TOLES  
 Susan B.  
 Menlo, Ga.

Susan B., Basketball; I. R. C.; Young  
 Ladies Circle; Alpha Psi; *Enotah Echoes*  
 Staff.

TOLES



WHITENER

WILLIAM L. VEATCH  
*Phi Chi*  
 Doraville, Ga.

*Phi Chi*, Alternate Champion Debater,  
 Grady Miller Speakers' Contest, Presi-  
 dent, Vice-President, Secretary, Anniver-  
 sarian; Spat Club, President; *Enotah*  
*Echoes*, Sports Editor; ENOTAH Staff;  
 Choir; Student Council, Solicitor General.

CLIFFORD THORSTON WEATHERS  
 Y. H. D. S.  
 Augusta, Ga.

Ministerial Conference; Y. H. D. S.,  
 Captain, Football Team.



WEATHERS

PEGGY ANN WHITENER  
*Phi Delta*  
 Ellijay, Ga.

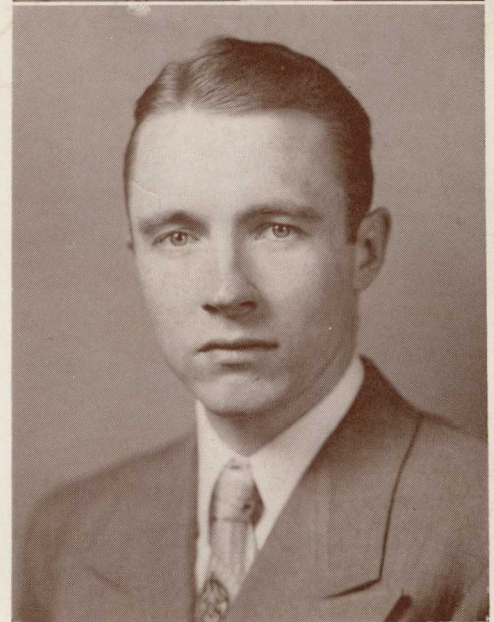
Young Ladies Circle; Choir.

JOHN MEIGS WHITTAKER  
 Y. H. D. S.  
 Bostwick, Ga.

Y. H. D. S., Football; I. R. C.; Student  
 Council.

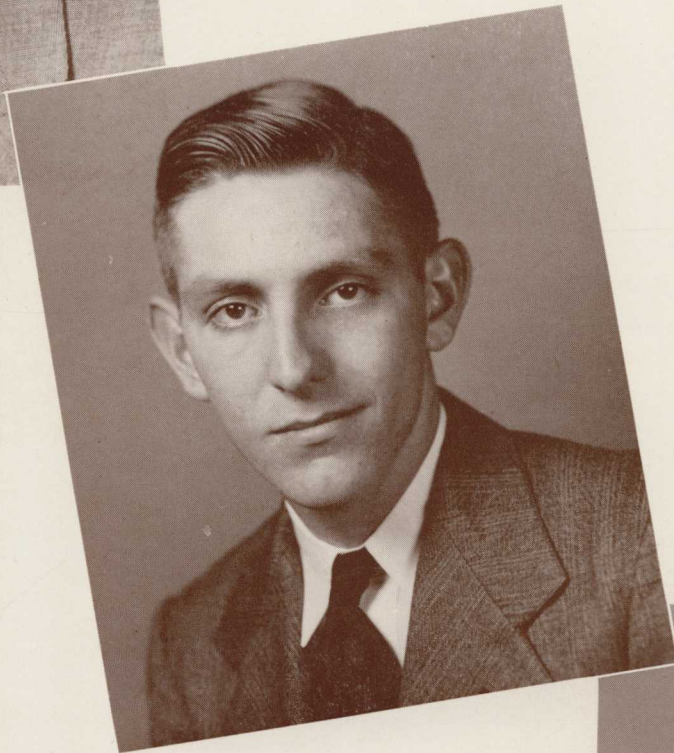
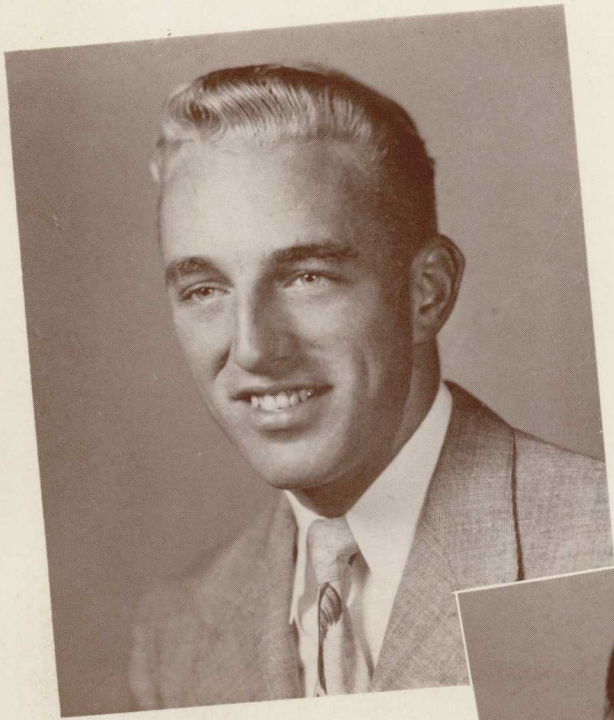
THEODORE WOOD  
 Y. H. D. S.  
 Flowery Branch, Ga.

Y. H. D. S., Sergeant-at-Arms, Softball,  
 Baseball; Choir; Student Council; Spat  
 Club, Treasurer.



VEATCH  
 WHITTAKER  
 WOOD

# FRESHMAN CLASS



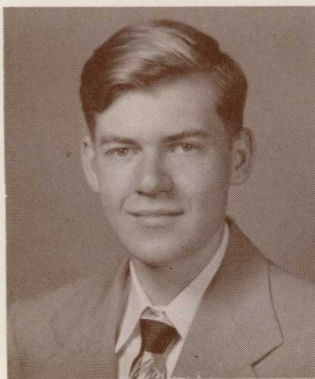
## OFFICERS

- "MAC" HAYNIE . . . . . *President*  
BILL BARRETT . . . . . *Vice-President*  
BECKY STUCKEY . . . . . *Secretary-Treasurer*  
PROF. ROBERT P. ANDRESS *Faculty Adviser*

JOHN M. HAYNIE  
*Phi Chi*  
Winder, Ga.

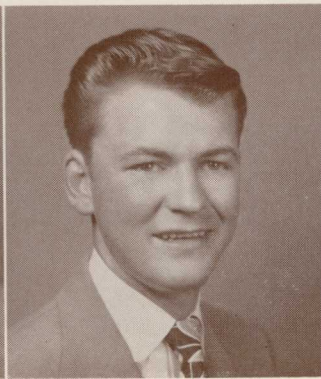
WILLIAM E. BARRETT  
*Phi Chi*  
Statham, Ga.

BECKY STUCKEY  
*Susan B.*  
Columbus, Ga.



ALLEN

HOYT ALLEN  
Y. H. D. S.  
Cleveland, Ga.



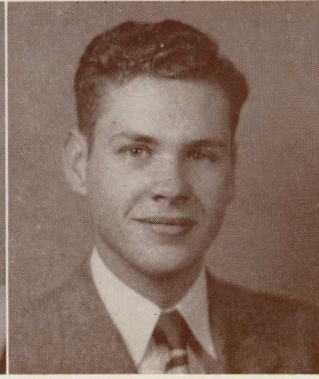
ANDERSON

RAY ANDERSON  
Hayesville, N. C.



ASH

CORDIA EVELYN ASH  
*Phi Delta*  
Ellijay, Ga.

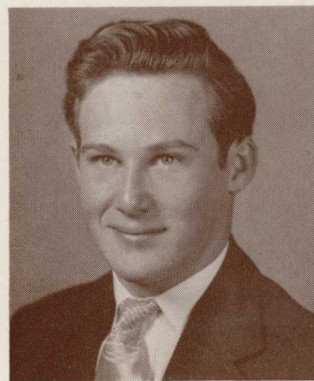


BARNES

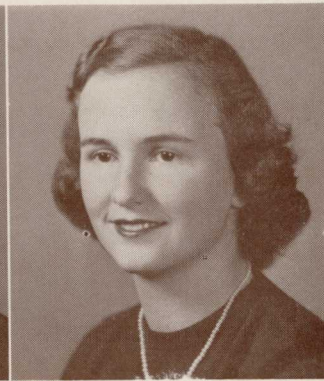
DAVID BARNES  
Y. H. D. S.  
Augusta, Ga.

JOHN ALTON BARWICK  
Thomasville, Ga.

BARBARA BLACK  
*Susan B.*  
Clarkesville, Ga.



BARWICK



BLACK



D. BROWN



K. BROWN

DONALD BROWN  
Y. H. D. S.  
Hampton, Ga.

KENNETH BROWN  
Y. H. D. S.  
Dillard, Ga.

JUNE BRYSON  
*Phi Delta*  
Young Harris, Ga.

BRYSON

EVELYN BURNS  
*Susan B.*  
Tucker, Ga.

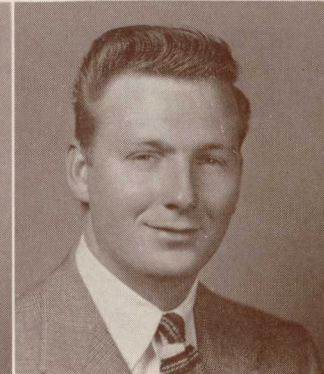
BURNS

ANN BUTTS  
*Phi Delta*  
Arnoldsville, Ga.

BUTTS

JOHN T. CABLE, JR.  
*Phi Chi*  
Young Harris, Ga.

CABLE





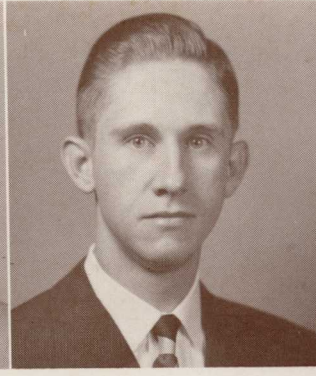
CHASTAIN

MARTHA JEAN CHASTAIN  
Murphy, N. C.



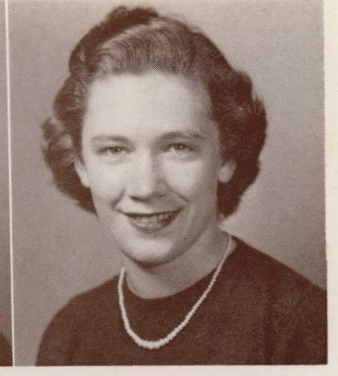
CLARY

JAMES ALLEN CLARY  
Y. H. D. S.  
Garden City, Ga.



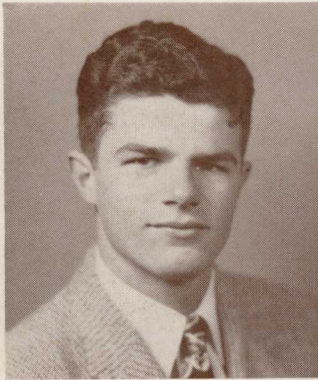
CLAY

ROBERT A. CLAY, JR.  
Phi Chi  
Gainesville, Ga.

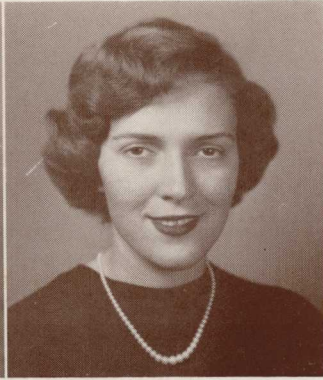


CLEGG

JEAN CLEGG  
Susan B.  
Young Harris, Ga.



CONE



DeLONG

THOMAS MORTON CONE  
Y. H. D. S.  
Eatonton, Ga.

CAROLYN DeLONG  
Phi Delta  
Athens, Ga.

BETTY RUTH DINKINS  
Susan B.  
Folkston, Ga.

PHILIP DiLAVORE, III  
Y. H. D. S.  
Methuen, Mass.



DINKINS



DiLAVORE

CHARLOTTE EDWARDS  
Susan B.  
Cleveland, Ga.

EDWARDS

JOYCE EIDSON  
Susan B.  
Dunwoody, Ga.

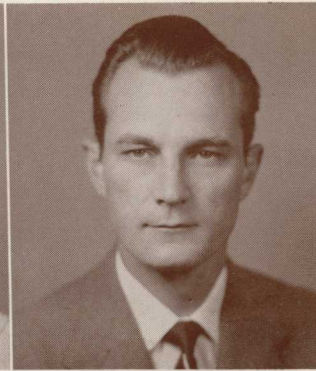
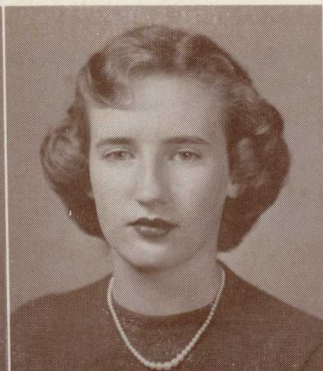
EIDSON

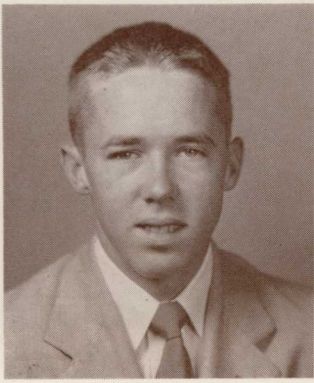
JOAN EVERETT  
Phi Delta  
Rome, Ga.

EVERETT

JOHN BARNEY FINCHER  
Phi Chi  
Washington, D. C.

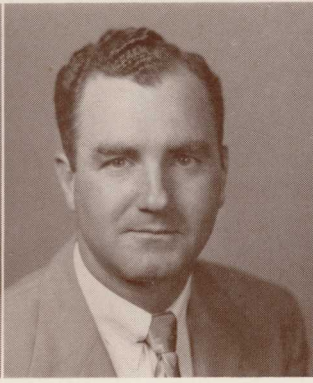
FINCHER





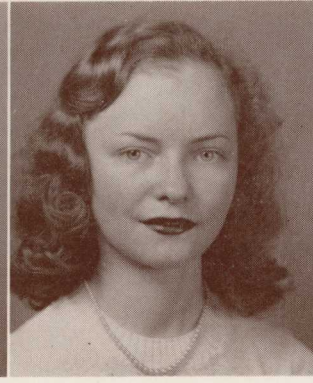
FORRESTER

JIMMY FORRESTER  
*Phi Chi*  
Winder, Ga.



FULFORD

BUFORD M. FULFORD  
Young Harris, Ga.



GALLOWAY

GERALDINE GALLOWAY  
*Susan B.*  
Young Harris, Ga.

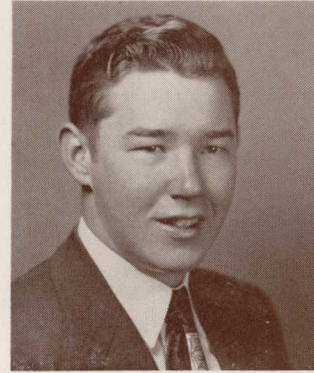


HALL

SHIRLEY ANN HALL  
*Susan B.*  
Ringgold, Ga.

BOB HAMILTON  
*Y. H. D. S.*  
Athens, Ga.

ELIZABETH ("*Libby*") HARBER  
*Phi Delta*  
Decatur, Ga.



HAMILTON



HARBER



A. HARRELL



M. F. HARRELL

AMANDA HARRELL  
*Susan B.*  
Mitchell, Ga.

MARY FRANCES HARRELL  
*Susan B.*  
Lloyd, Fla.

ROBERT J. HAWKES  
Augusta, Ga.

HAWKES

A. J. HEATON  
*Y. H. D. S.*  
Mineral Bluff, Ga.

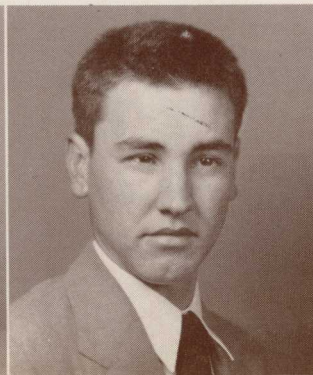
HEATON

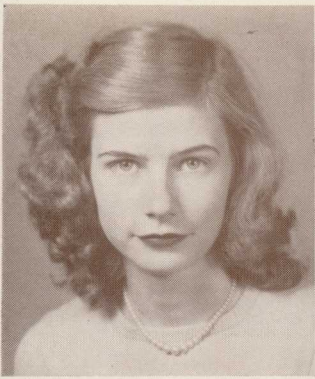
ELLEN ROSE HELTON  
*Phi Delta*  
Isabella, Tenn.

HELTON

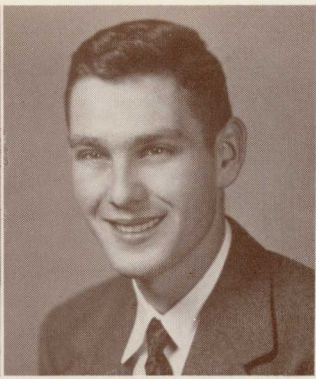
BETTY JANE HEMPHILL  
(Mrs. Gene Kellum)  
*Susan B.*  
Commerce, Ga.

HEMPHILL





HENDRIX



HENRY

DORIS ANN HENDRIX  
Murphy, N. C.

DAVID HENRY  
*Phi Chi*  
Tampa, Fla.

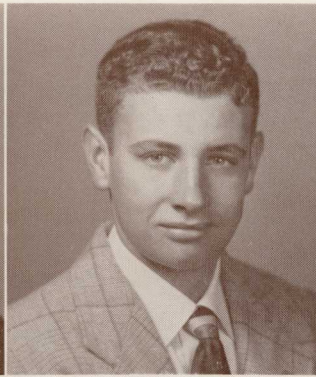
MARY HERRINGTON  
*Phi Delta*  
Smithville, Ga.



HERRINGTON



HILL



HUNT



INGRAM

BURAN SUE HILL  
*Susan B.*  
Ellijay, Ga.

JERRY HUNT  
*Phi Chi*  
College Park, Ga.

DONN M. INGRAM  
*Susan B.*  
Young Harris, Ga.

BEN EDWARD JINKINS  
*Phi Chi*  
Chatsworth, Ga.

JOANNE JOHNSTON  
*Phi Delta*  
Newborn, Ga.

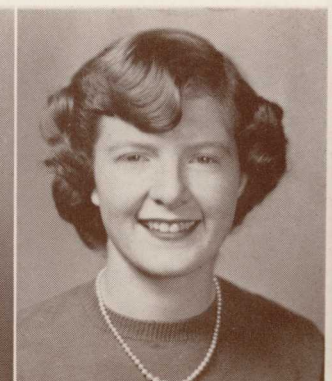
BETTY JO JONES  
*Phi Delta*  
Smithville, Ga.



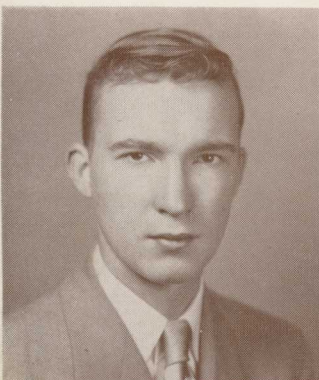
JINKINS



JOHNSTON



JONES

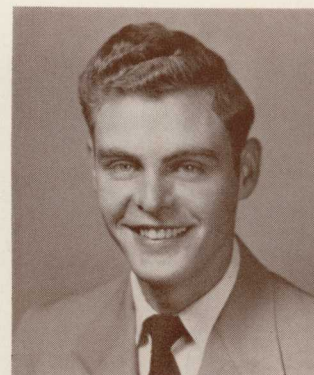


KATES

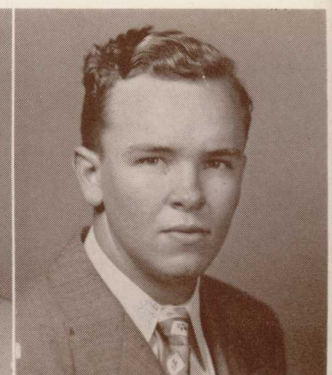
ZELL REUBEN KATES  
*Y. H. D. S.*  
Cuyohoga Falls, Ohio

ROBERT EUGENE KELLUM  
*Y. H. D. S.*  
Commerce, Ga.

ROBERT B. KEMPSON  
*Y. H. D. S.*  
Clarksville, Ga.



KELLUM



KEMPSON



MARY KERSEY  
*Susan B.*  
Sandy Springs, Ga.



CHARLES KILPATRICK  
*Y. H. D. S.*  
New Holland, Ga.



LEIGH KINSEY  
*Phi Delta*  
Gainesville, Ga.

KERSEY

KILPATRICK

KINSEY

RENEE LANIER  
*Phi Delta*  
Pembroke, Ga.

BARBARA LEDFORD  
(Mrs. Jack Little)  
*Susan B.*  
Atlanta, Ga.

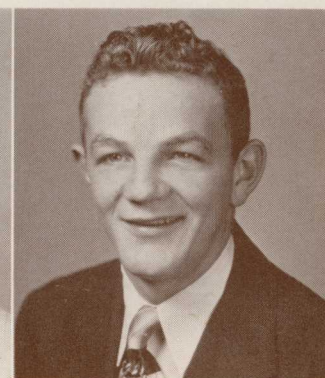
JAMES ALLEN LONG  
*Phi Chi*  
Clayton, Ga.



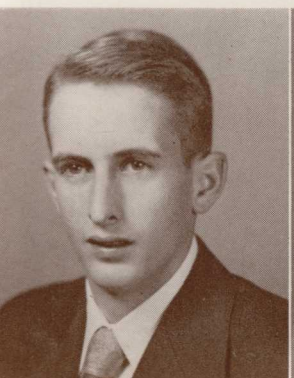
LANIER



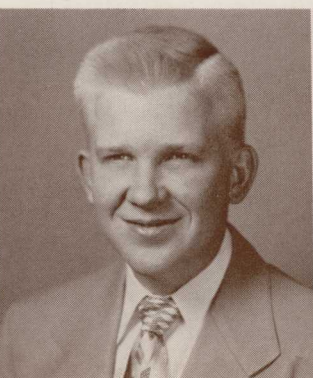
LEDFORD



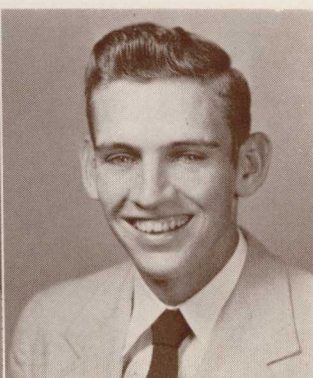
LONG



LOVE



B. LYLE

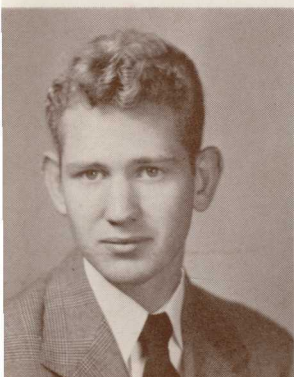


J. LYLE

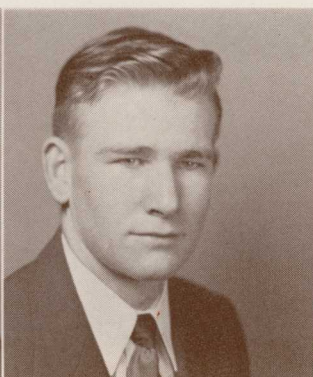
JOHN LOVE  
*Y. H. D. S.*  
Morganton, Ga.

BILL LYLE  
*Phi Chi*  
Statham, Ga.

JOHNNY LYLE  
*Phi Chi*  
Winder, Ga.



MARLOWE



M. MARTIN

JAMES MARLOWE  
*Phi Chi*  
Winder, Ga.

MELTON MARTIN  
*Phi Chi*  
Atlanta, Ga.

RUTH MARTIN  
Young Harris, Ga.



R. MARTIN



MAXWELL  
MEALOR

MEADOWS  
MILLER

CELESTE MAXWELL  
*Susan B.*  
Toccoa, Ga.

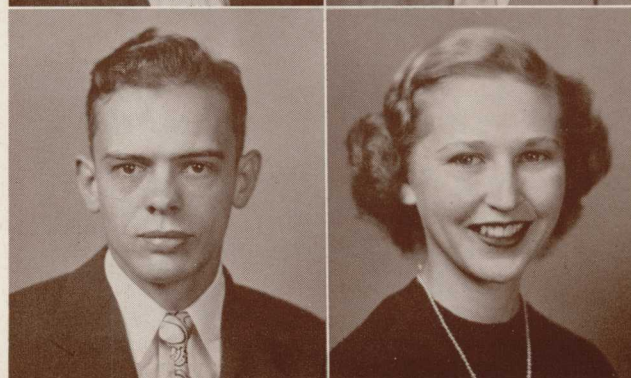
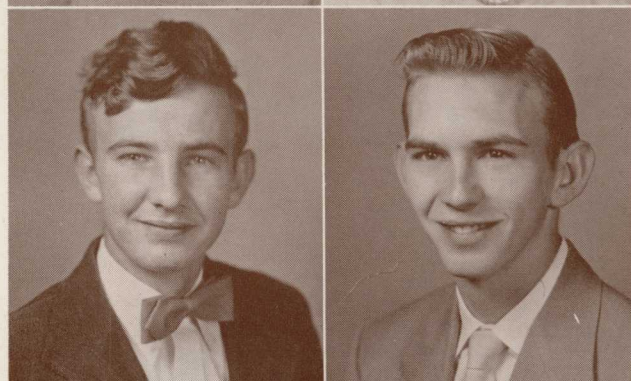
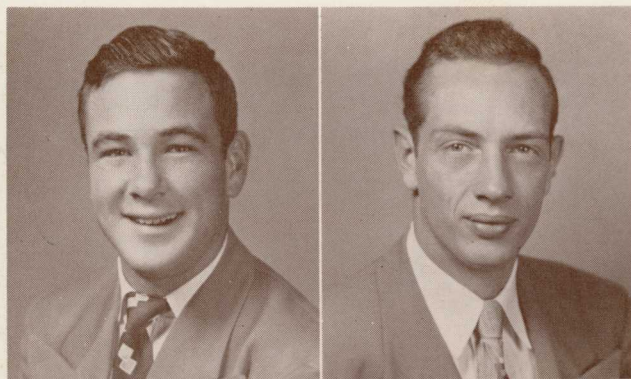
EDNA MARIE MEADOWS  
*Susan B.*  
Dawson, Ala.

PATSY RUTH MEALOR  
*Susan B.*  
Commerce, Ga.

WILLIAM MILLER  
*Y. H. D. S.*  
Fort Valley, Ga.

NELSON  
NICHOLS  
NUNN  
PATRICK

NEWSOME  
NOLAND  
PARKER  
PEASE



CHARLES EMMETT NELSON  
*Phi Chi*  
Augusta, Ga.

MILTON RAY NEWSOME  
*Phi Chi*  
Mountain View, Ga.

FRANCES NICHOLS  
Hiawassee, Ga.

BARBARA NOLAND  
*Phi Delta*  
Decatur, Ga.

EARL NUNN  
*Y. H. D. S.*  
Bostwick, Ga.

CLINTON PARKER  
*Phi Chi*  
Columbus, Ga.

EDWARD ALLAN PATRICK  
*Y. H. D. S.*  
Covington, Ga.

PATRICIA ANN PEASE  
*Susan B.*  
St. Marys, Ga.

CAROLYN PENTECOST  
*Phi Delta*  
 Winder, Ga.

JAMES ROY PERKINS  
*Phi Chi*  
 Statham, Ga.

HOYT HOMER PICKLESIMER  
*Y. H. D. S.*  
 Letitia, N. C.

JAMES GASTON POLLOCK  
*Y. H. D. S.*  
 Columbus, Ga.

POTTS  
 QUINTRELL  
 REED  
 ROBERTS

PROSSER  
 RACKLEY  
 RITCH  
 ROGERS



PENTECOST  
 PICKLESIMER

PERKINS  
 POLLOCK

RALPH POTTS  
*Phi Chi*  
 Ringgold, Ga.

BERYL PROSSER  
*Phi Delta*  
 Milledgeville, Ga.

MAX QUINTRELL  
*Y. H. D. S.*  
 Epworth, Ga.

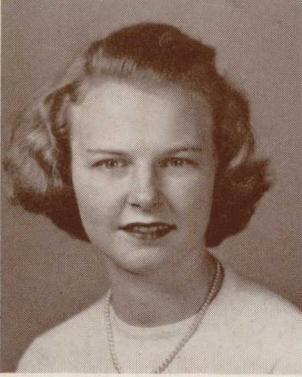
PEGGY RACKLEY  
*Susan B.*  
 Mineral Bluff, Ga.

ROBERT HENRY REED  
*Phi Chi*  
 Augusta, Ga.

ROBERT RITCH  
*Y. H. D. S.*  
 Powder Springs, Ga.

WILLIAM ROBERTS  
*Y. H. D. S.*  
 Clarkesville, Ga.

NELLIE ROGERS  
*Susan B.*  
 Rome, Ga.



SHEETS  
SHULER  
G. SMITH

DORIS SHEETS  
*Susan B.*  
Franklin, Ga.

BETTY JANE SHULER  
*Phi Delta*  
Blairsville, Ga.

GENEVA SMITH  
*Phi Delta*  
Thomaston, Ga.

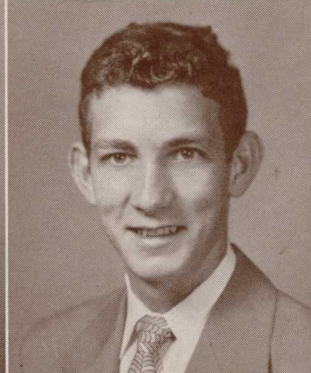
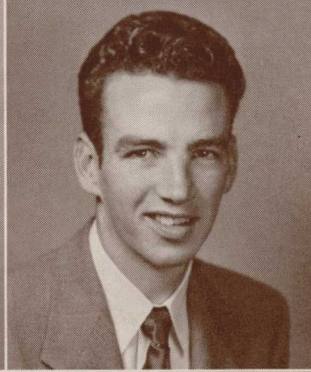
JOYCE SMITH  
*Susan B.*  
Dunwoody, Ga.

GERALDINE SMYTH  
*Susan B.*  
Wildwood, Ga.

BESSIE SNOW  
*Phi Delta*  
Monroe, Ga.

J. SMITH  
SMYTH  
SNOW

SPIVEY  
SWANSON  
TILLMAN



JACQUELYN SPIVEY  
*Susan B.*  
Dublin, Ga.

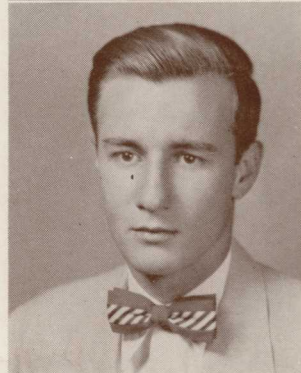
CHAS. MACDOWELL SWANSON  
*Phi Chi*  
Clayton, Ga.

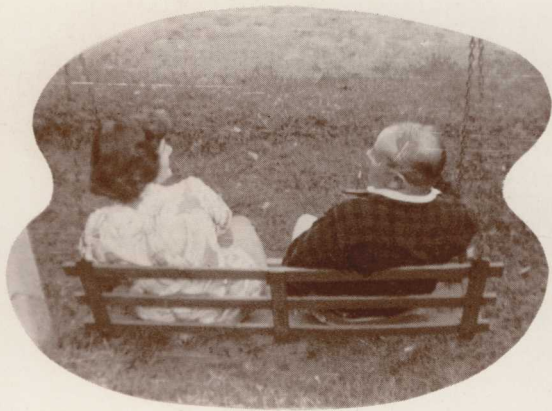
MARQUS TILLMAN, JR.  
*Phi Chi*  
Waycross, Ga.

WILLIAM TOMLIN  
*Phi Chi*  
Clayton, Ga.

PEDRO DE LA TORRE  
*Y. H. D. S.*  
Santa Clara, Cuba

TOMLIN  
TORRE





DONALD JOHN WELCH  
Y. H. D. S.  
Augusta, Ga.

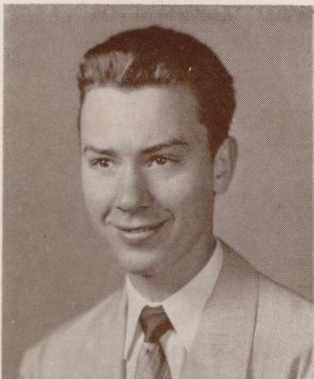
ANN WEST  
Susan B.  
Madison, Ga.

ELIZABETH WHITE  
Susan B.  
Madison, Ga.

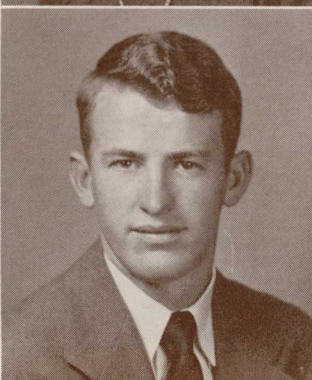
LORETTA WHITLEY  
Susan B.  
Atlanta, Ga.

GEORGE WILBANKS  
Phi Chi  
Ramhurst, Ga.

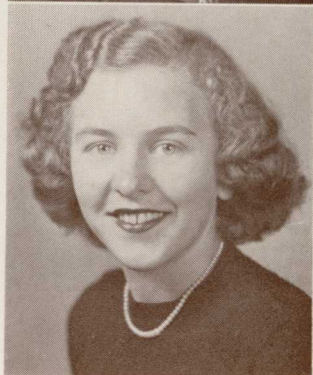
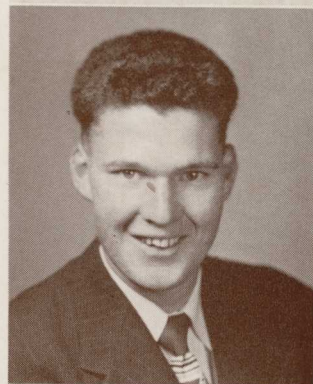
WELCH  
WEST



WHITE  
WHITLEY  
WILBANKS



WILLIAMS  
WILSON  
WOODALL



WOODS  
E. WRIGHT  
M. WRIGHT

ALMA WILLIAMS  
Susan B.  
Meansville, Ga.

PATRICIA WILSON  
Phi Delta  
Lake Worth, Fla.

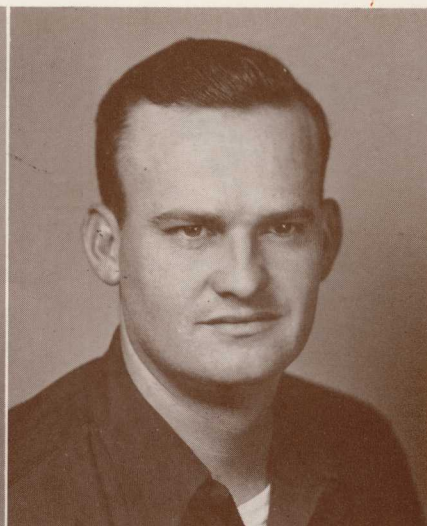
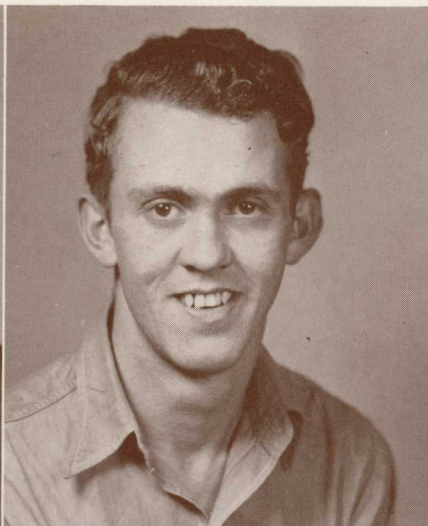
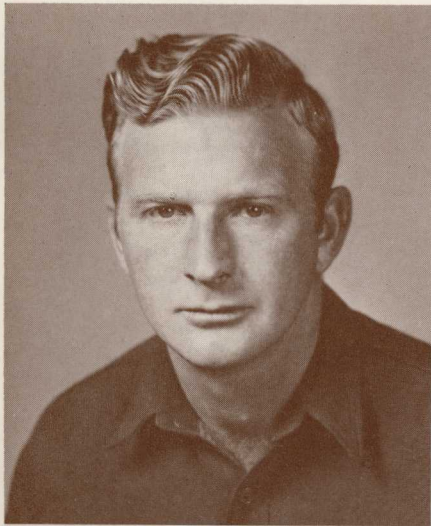
JOAN WOODALL  
Susan B.  
Doraville, Ga.

ANN WOODS  
Phi Delta  
Trion, Ga.

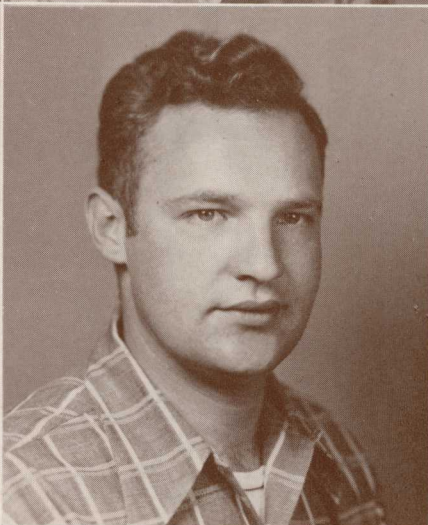
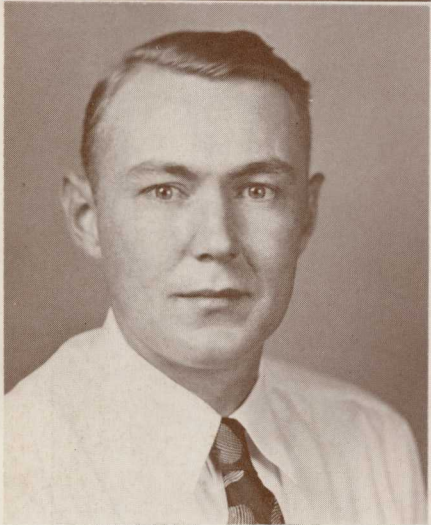
EUGENE WRIGHT  
Hemp, Ga.

MARTHA DEAN WRIGHT  
Phi Delta  
LaGrange, Ga.

Young Harris College Library  
Young Harris, Ga.



HOLLIFIELD  
MASON  
NICHOLS



ROGERS

WILSON

# SPECIAL STUDENTS

During this school year Young Harris College, in keeping with programs of education in many colleges, has had night classes for veterans. The courses offered are designed to meet the actual practice needs of the local veterans and their professional activities. During the winter quarter there were

nearly forty-five veterans who enrolled in regular classes and in night classes. Among the latter group are Monroe Hollifield, Hayesville, N. C.; Cooledge Mason, Blairsville, Ga.; William J. Nichols, Blairsville, Ga.; C. A. Rogers, Blairsville, Ga.; and Charles Wilson, Blairsville, Ga.

1. Eunetta gloats over a well-aimed snowball; the victim, her roommate, Alice. 2. Some candid photographer around here needs to aim higher. 3. and 4. Loretta and Pat slide down the ramp back of Appleby.



DIAZ  
E. MENA  
L. MENA



# SPECIAL STUDENTS



SPEIR

THORNTON

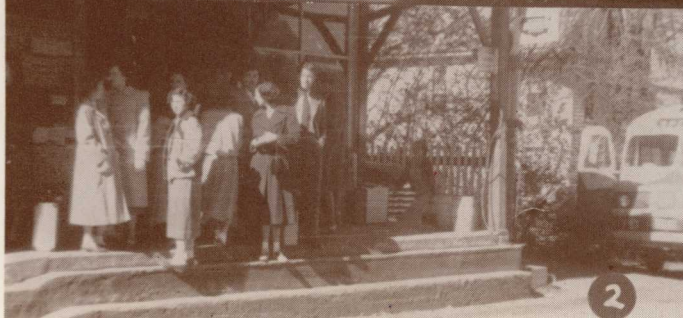
For many years we have had students from Cuba enrolled in regular work or making a special study of English. Among the latter this year are Señorita Carmen Diaz, of Santa Clara, Cuba; Señorita Ener Mena and her sister, Señorita Lupe Mena, of Santiago de Cuba, Cuba. Carmen is a Susan B.

Jean Speir, of Dawson, Ga., was a member of the Senior Class during the fall quarter, but she was forced to withdraw because of illness. While

she was here, she was active in the Dorcas Club, the Student Council, the Commercial Club, and the Phi Delta Society.

Rachel Thornton, of Elberton, Ga., is taking post-graduate work. She transferred here from North Georgia College. She is a member of the Phi Delta Society and the Young Ladies Circle and is secretary of the International Relations Club.

1. and 2. Waiting for the bus in Gainesville and Young Harris while (3) the three stooges provide entertainment.
4. Mr. Humphreys has a camera. Is he the candid cameraman?
5. "Whitey" and Blackie.



# ACADEMY



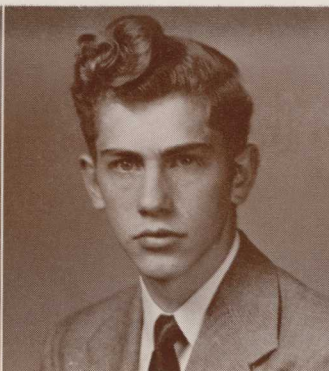
## OFFICERS

- PAUL LANGFORD . . . . . *President*  
BEVERLY BOLING . . . . . *Vice-President*  
JUNE CAMPBELL . . . . . *Secretary-Treasurer*

PAUL LANGFORD  
*Phi Chi*  
Charlotte, N. C.

BEVERLY GAIL BOLING  
*Phi Delta*  
Jacksonville Beach, Fla.

JUNE CARROL CAMPBELL  
*Phi Delta*  
Brunswick, Ga.



DEITZ  
GRIFFIN  
HALE  
JACKSON

VIRGINIA DEITZ  
*Susan B.*  
Young Harris, Ga.

FAYE KNOTT  
*Phi Delta*  
Cedartown, Ga.

JONES

FRANK GRIFFIN  
*Y. H. D. S.*  
Pelham, Ga.

NARVEL LASSITER, JR.  
*Y. H. D. S.*  
Marietta, Ga.



PEGGY HALE  
*Phi Delta*  
Thomaston, Ga.

MARTHA PRIDGEON  
*Phi Delta*  
Smithville, Ga.

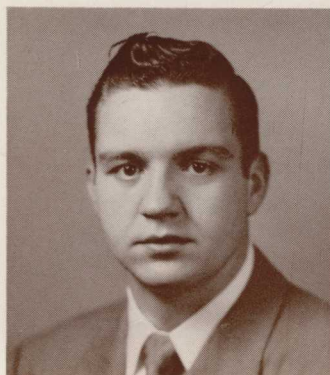
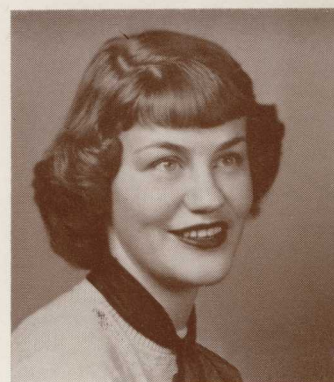
SYLVIA JACKSON  
*Susan B.*  
Atlanta, Ga.

MARY ANN ROSS  
Young Harris, Ga.

KNOTT

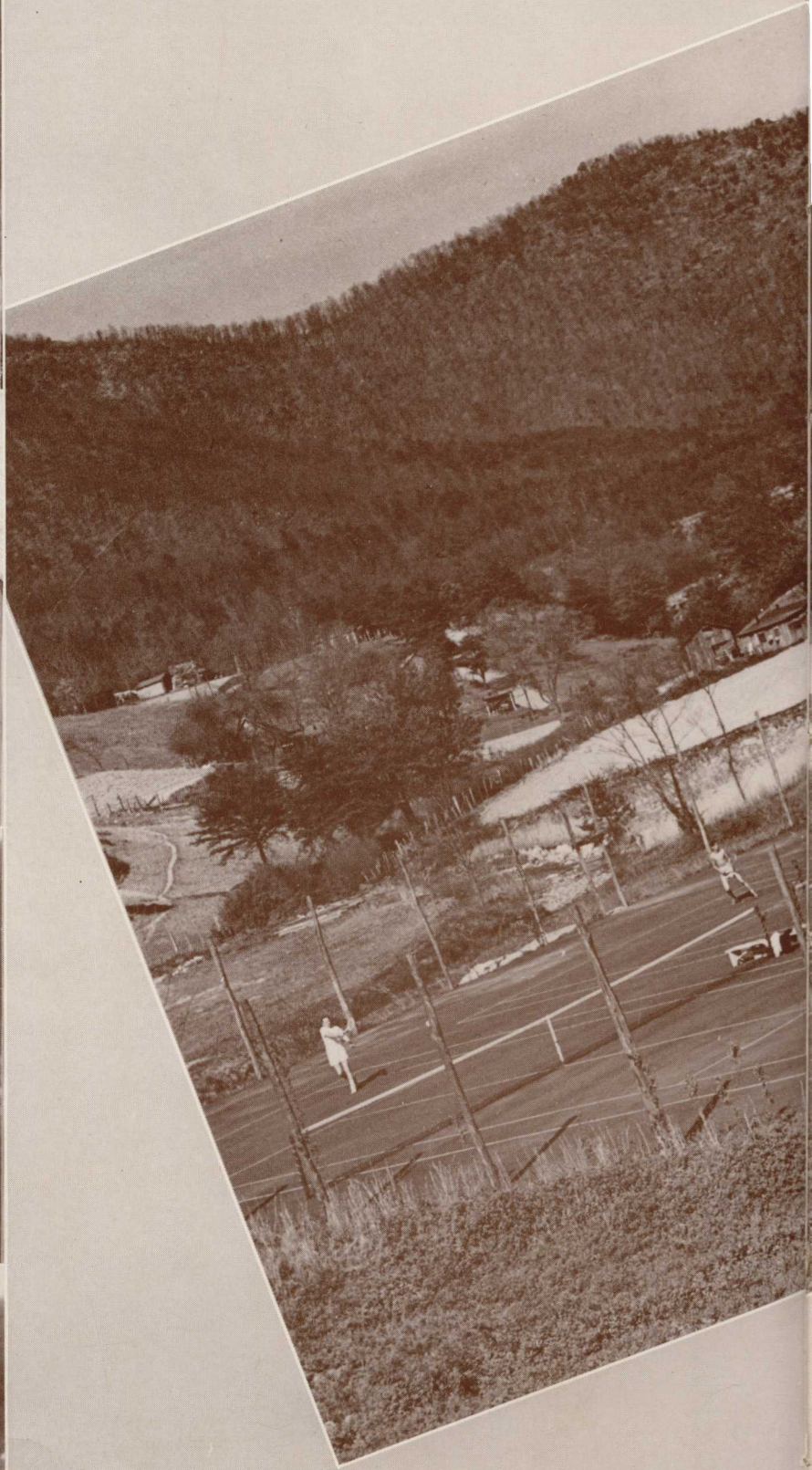
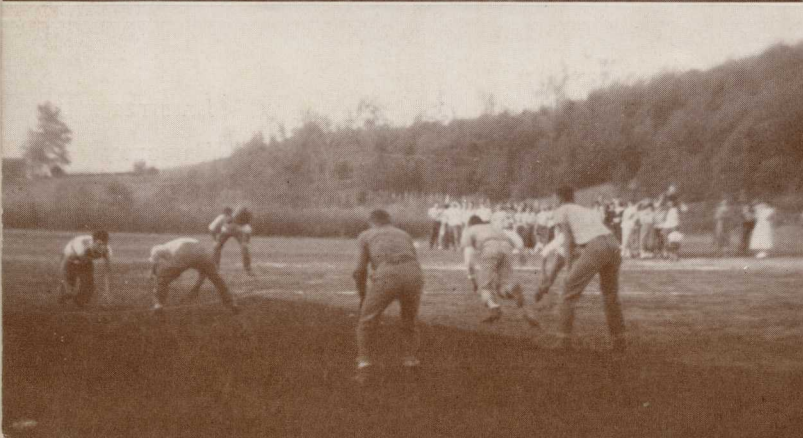
ALICE ROSWELL JONES  
*Susan B.*  
Savannah, Ga.

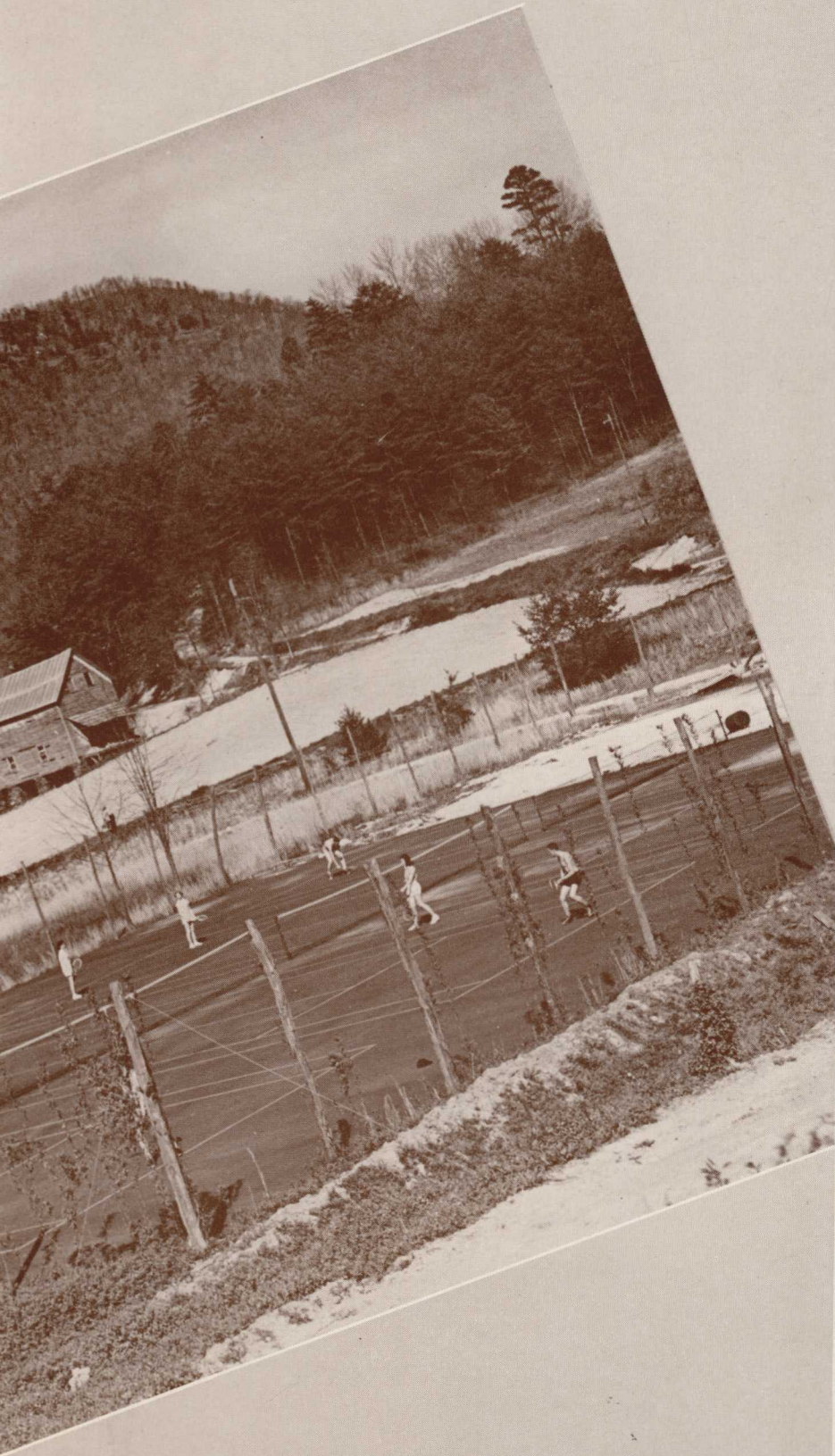
DANICE TURNER  
*Phi Delta*  
Atlanta, Ga.



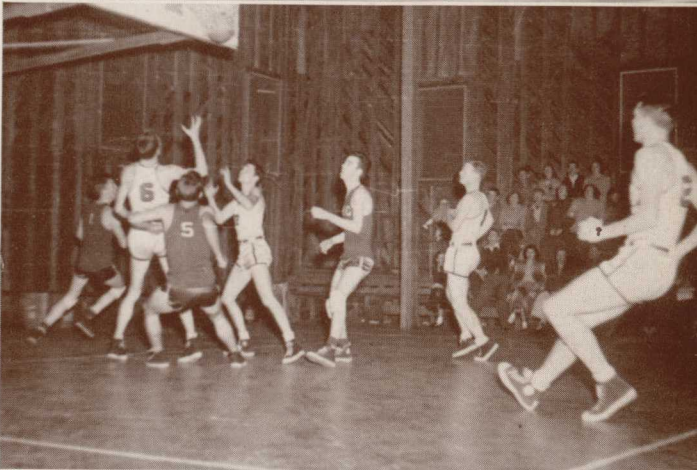
LASSITER  
PRIDGEON  
ROSS  
TURNER

# ATHLETICS





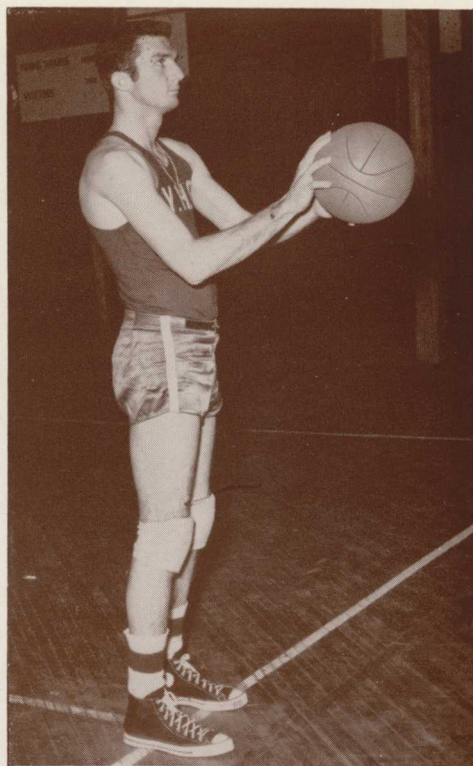
*How can we ever forget the excitement of society games, the frigid gym, the sun blazing on the tennis court, the fullness of our hearts as we sang the "Alma Mater" at basketball games!*



# VARSITY BASKETBALL



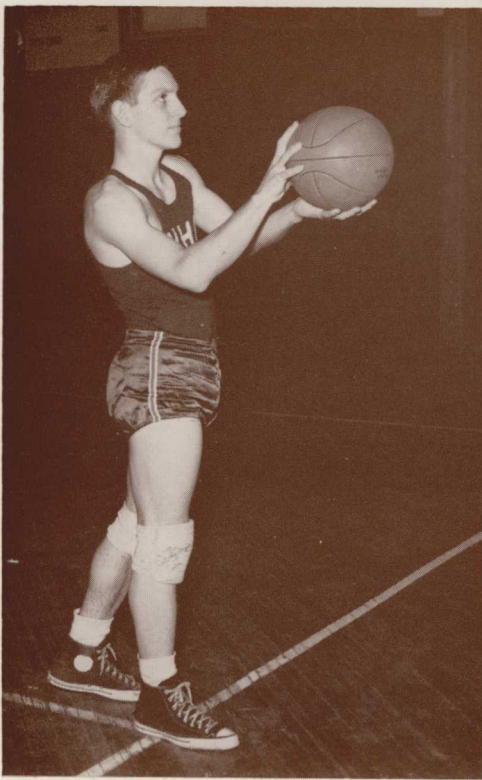
*Left:* Coach Luke Rushton.



*Right:* Captain James Hutto (Center)

*Seated, left to right:* James Marlowe, Bill Barrett, Jimmy Perkins. . . *Second row:* James Hutto, Bob Short, David Henry, Melton Martin, William Roberts. . . *Third row:* Bill "Molly" Lyle (Manager), Mac Swanson, "Red" Ross, Bob Huggins, Gaston Pollock, Coach Rushton.

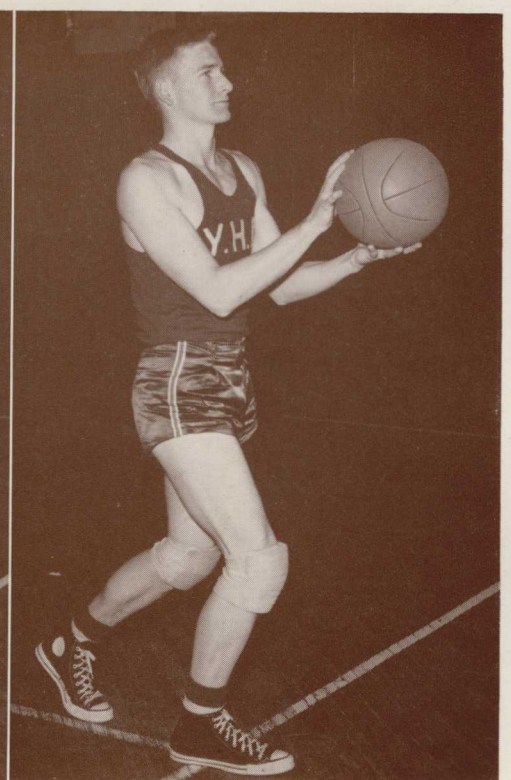




BILL BARRETT (Forward)



DAVID HENRY (Guard)



MELTON MARTIN (Guard)

Y. H. C. SCHEDULE

Y.H.C.	OPPONENTS	
54	N. Ga. Vocational School	42
72	Southern College of Pharmacy	47
77	McCaysville Legion Post	21
58	Southern College of Pharmacy	44
68	New Holland	34
57	U. of Georgia Freshmen	66
56	U. of Georgia Freshmen	72
54	Mars Hill	74
56	Hiwassee College	59
65	Tennessee Wesleyan	72
65	Hiwassee College	44
61	Southern Tech	49
60	Southern Tech	62
76	N. Ga. Vocational School	40
66	Tennessee Wesleyan	50
79	Brevard College	57
53	Mars Hill	88
68	New Holland	73
74	Abraham Baldwin College	69
79	Georgia Military Academy	59
71	Gordon College	51
77	Abraham Baldwin College	90
95	Brevard College	47
67	Norman Park	59
81	South Georgia College	93
89	Southern College of Pharmacy	71
65	Columbia Seminary	81
68	Oglethorpe University	51

The 1951 Mountain Lions set three new school records. They upped their last year's scoring record from 1897 to 1901, and they raised their 1950 point average of 62 to 67.8 per game.

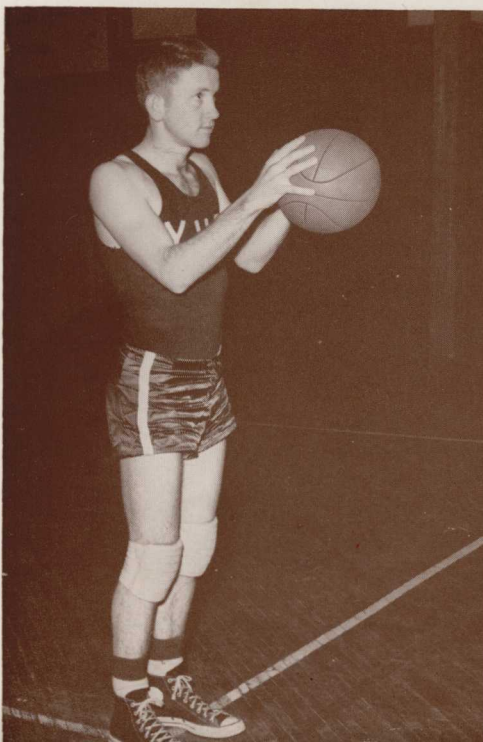
Bob Short was the team's leading scorer with a total of 594 points for a 21.2 average per game. This is a new school record for total points scored during a single season by an individual player. James Hutto, center, followed close behind by tallying 514 points for an 18.3 average per game.

Young Harris entered the state tournament at Tifton, Georgia, and defeated Norman Park Junior College 67 to 59. South Georgia College eliminated Young Harris in the quarter finals 94 to 81.

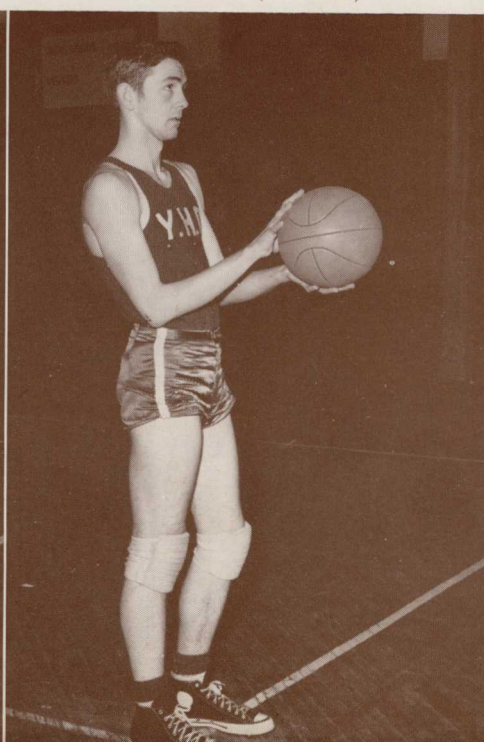
The Mountain Lions then entered the Southern Tech Invitational Tournament at Atlanta, Georgia. They defeated Southern College of Pharmacy 89 to 71. Young Harris established a new record for most points scored in one game. Columbia Theological Seminary then upset Young Harris 81 to 64. The Mountain Lions defeated Oglethorpe University 68 to 51 for the Consolation Championship.

Bob Short set two records during the tournament: most points scored during a single game—37; and most points scored for three games—84. He was named on the All-Tournament Team. The season's record was 17 won and 11 lost.

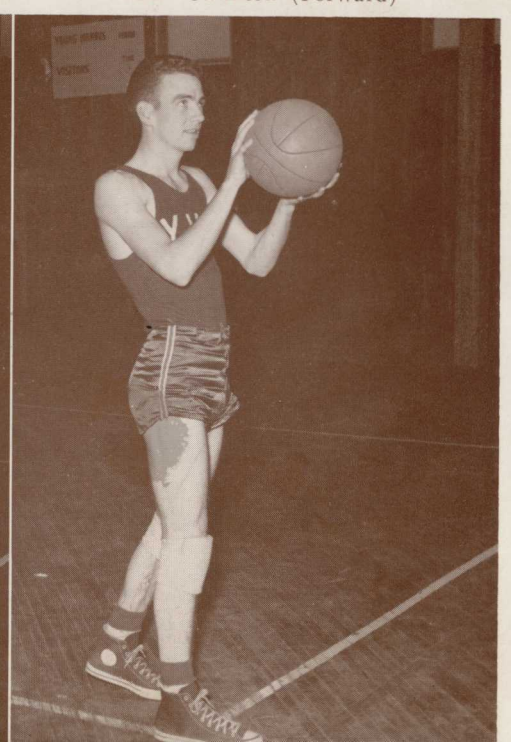
"RED" ROSS (Guard)

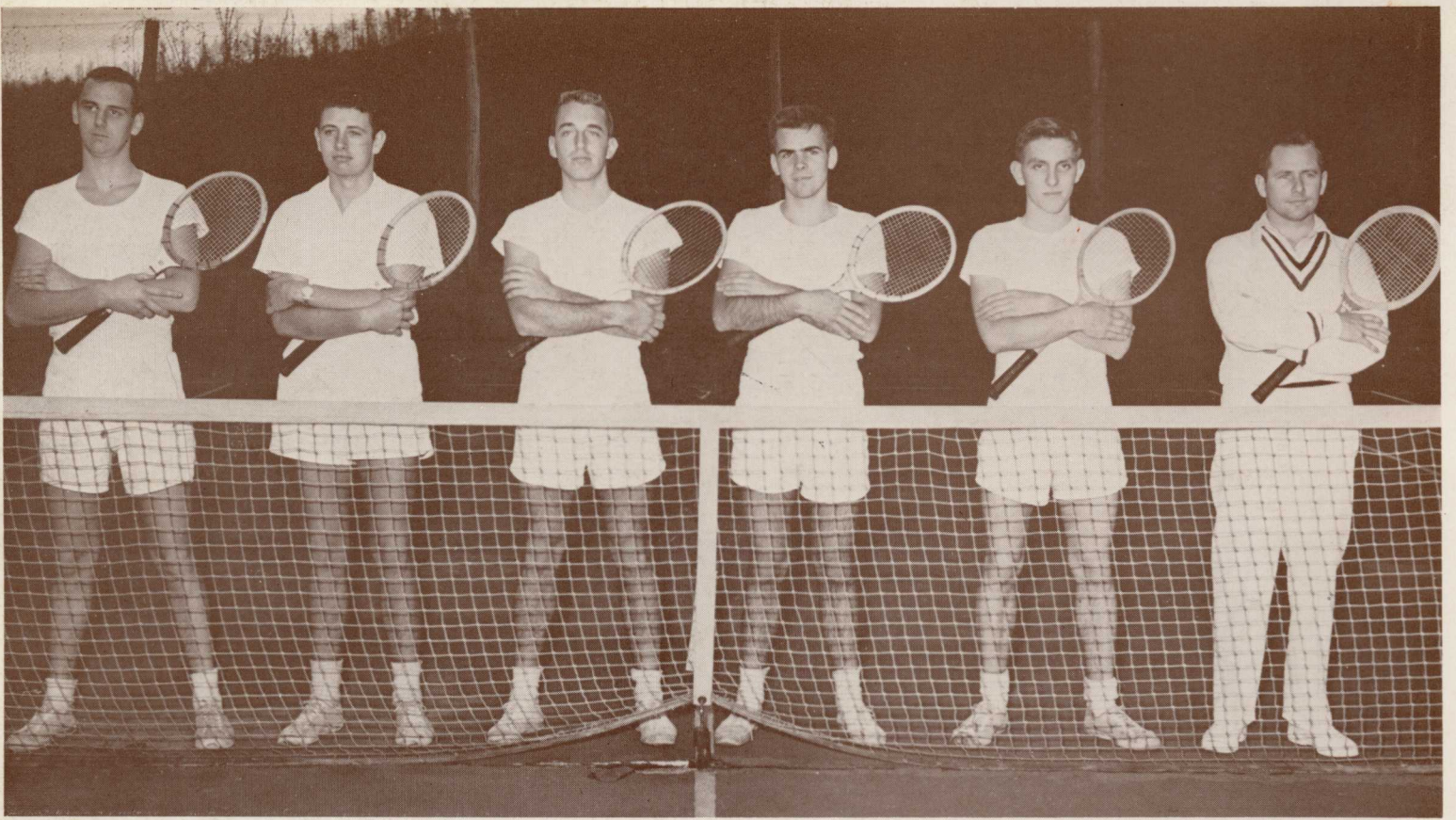


BOB SHORT (Forward)



"MAC" SWANSON (Forward)





## TENNIS TEAM

For the first time in many years Young Harris has prospects of intercollegiate tennis matches. This has been made possible by the construction of new courts and the enrollment of experienced players. Shown here are Paul Langford, Jerry Hunt (Georgia State Champion, Class B), "Mac" Haynie, Robert Reed, Bill Barrett, and Coach Rushton. During the spring they will play Southern Tech, Tennessee Wesleyan, Emory at Oxford, Piedmont College, and Asheville-Biltmore.

*First row:* Beverly Boling, Robert Rigsby, and Pat Wilson. . . . *Second row:* Joyce Lynch, Grady "Gulley" Parrish, and Carolyn DeLong.

## CHEERLEADERS





1. Charlotte and Amanda concentrate on reading "great literature". 2. Dawn Miller led the list of "I do's". 3. Alma and Bud seem to have hit rock bottom. 4. A young wolf? 5. She's a snow WOMAN, they said. 6. Giggles manages only a grin. 7. Miss Chappell goes to chapel. 8. Pat winds up for a fast curve. 9. This has the Good House-keeping mark of disapproval. 10. "Why doesn't that play cast come on here! I haven't got all day!" 11. Charlie Waters rolls a snowball. 12. Flip holds his audience spellbound (except the ones who are frightened away). 13. Netta is on the warpath again. 14. I thought that I should never see Zip Miller holding up a tree. 15. What did they see? They saw Cherokee!

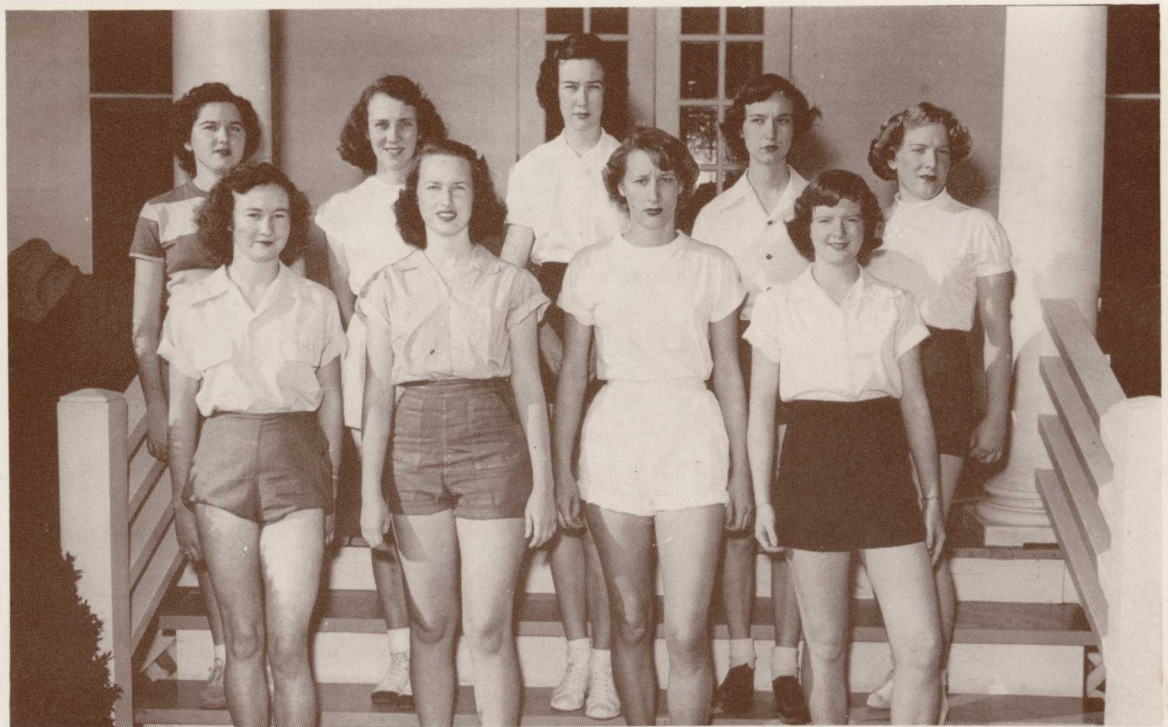


## PHI CHI FOOTBALL TEAM

*First row:* Jimmy Perkins and James Marlowe. . . . *Second row:* "Red" Ross, Mickey Long, William Tomlin, "Mac" Swanson, "Tank" Henry, Melton Martin, "Mac" Haynie, James Hutto. *Third row:* Clinton Parker, George Wilbanks, Robert Reed. . . . *Fourth row:* Bob Short, Ben Jenkins, Charlie Nelson.

## PHI DELTA BASKETBALL TEAM

*Front row:* Lillian Stewart, Bessie Snow, Danice Turner, Betty Jo Jones. . . . *Back row:* Mary Herrington, Ellen Rose Helton, Martha Pridgeon, Renee Lanier, Libby Harber.



## PHI CHI BASKETBALL TEAM

*First row:* Clinton Parker, Jimmy Forrester, Mickey Long, Jerry Hunt, Edgar Jenkins, George Wilbanks. . . . *Back row:* Ben Jenkins, Robert Reed, "Zip" Miller, Ralph Potts.



## Y. H. D. S. FOOTBALL TEAM

*First row:* Frank Griffin, Leroy Smith, Gaston Pollock, Bob Gary, James Helton, Maston Cooper. . .  
*Second row:* A. J. Heaton, Thomas Cone, Meigs Whittaker, Earl Nunn, Eduardo del Rio, Billy Miller, Clifford Weathers.



## SUSAN B. BASKETBALL TEAM

*First row:* Mary Frances Harrell, Jean Clegg, Barbara Black, Sylvia Jackson, Pat Pease, Mary Kersey.  
*Second row:* Celeste Maxwell, Peggy Sue Barfield, James Israel (Coach), Joyce Eidson, Charlotte Edwards.

## Y. H. D. S. BASKETBALL TEAM

*Front row:* Charles Kilpatrick, John Love, Maston Cooper, Eduardo del Rio, Thomas Cone, Leroy Smith.  
*Back row:* James Israel, Robert Rigsby, Bob Gary, Kenneth Brown, A. J. Heaton, Bobby Barlow.





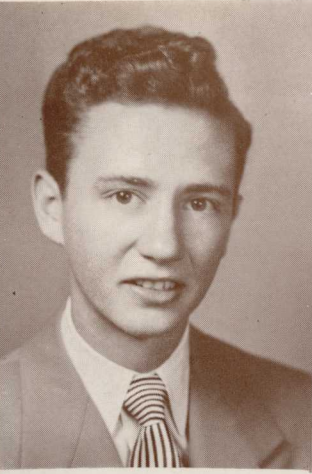
*Meeting... Meeting... Meeting! Remember when you had to be at three places at one time? Perhaps Memory will discard all the confusion and will retain only the joy and good fellowship that we knew.*

# ORGANIZATIONS

Edgar Jenkins presides at the Phi Chi-Phi Delta banquet.  
"The Old Lamp Lighter" in the program at the Ycung  
Harris-Susan B. banquet.



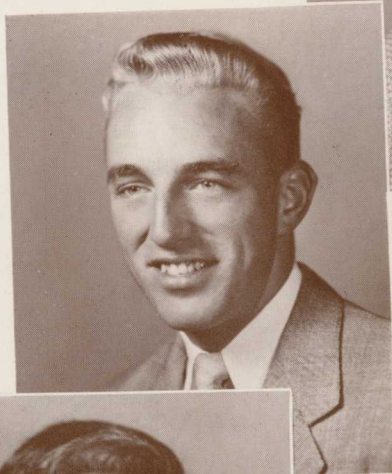
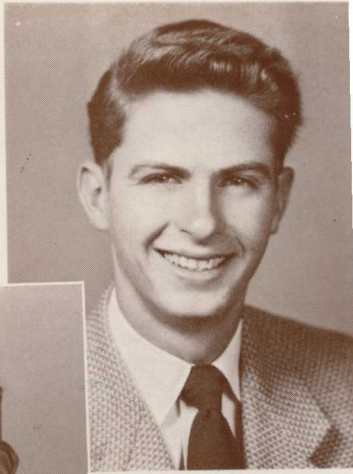
# PHI CHI DEBATING SOCIETY



JENKINS



AUSTIN



MILLER  
HAYNIE  
VEATCH

## PRESIDENTS

CHESTER AUSTIN, JR. . . . . *Fall Quarter*  
EDGAR JENKINS . . . . . *Winter Quarter*



## CHAMPION DEBATERS

ZELL MILLER  
"MAC" HAYNIE  
EDGAR JENKINS  
BILL VEATCH  
*Alternate*

*Left to right:* Kippy Kirkpatrick, Mascot. . . *First row:* Mickey Long, Charles Nelson, Edgar Jenkins, Chester Austin, Clinton Parker, Jimmy Forrester. . . *Second row:* James Perkins, Bill Lyle, Truett Crumley, Richard Ross, Melton Martin, James Teal, Ben Jinkins. . . *Third row:* George Wilbanks, Robert Clay, Jerry Hunt, Bob Short, "Mac" Swanson, Zell Miller. . . *Fourth row:* William Tomlin, David Henry, James Hutto, "Mac" Haynie.



# PHI DELTA SOCIETY



SPEIR



LYNCH

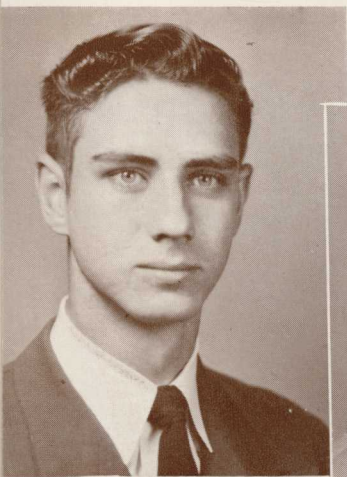
## PRESIDENTS

MILDRED SPEIR . . . . . *Fall Quarter*  
 JOYCE LYNCH . . . . . *Winter Quarter*

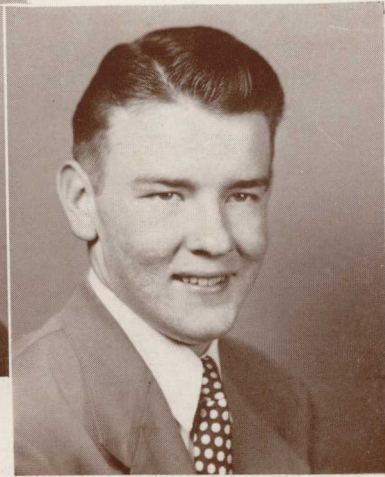
*First row:* Betty Jo Jones, Kippy Kirkpatrick (Mascot), Peggy Hale. . . . . *Second row:* Rachel Thornton, Mildred Speir, Joyce Lynch, Lillian Stewart, Beverly Boling, Pat Wilson, Bessie Snow, Barbara Noland. . . . . *Third row:* Mary Knight, Betty Jane Shuler, Joan Everett, Joanne Johnston, Ann Woods, Ellen Rose Helton, Jessie Chandler, Geneva Smith. . . . . *Fourth row:* Libby Harber, Beryl Prosser, Renee Lanier, Danice Turner, Peggy Whitener, Mary Herrington, Carolyn Pentecost. . . . . *Fifth row:* Edna Bruce, Midge Bentley, Ann Butts, Betty McMillin, Martha Pridgeon, Carmen Gutierrez, Evelyn Ash, Martha Dean Wright.



# YOUNG HARRIS DEBATING SOCIETY



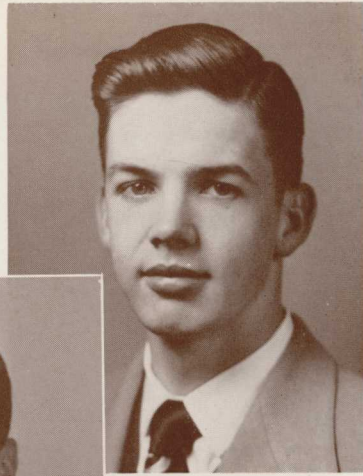
SMITH



GARY

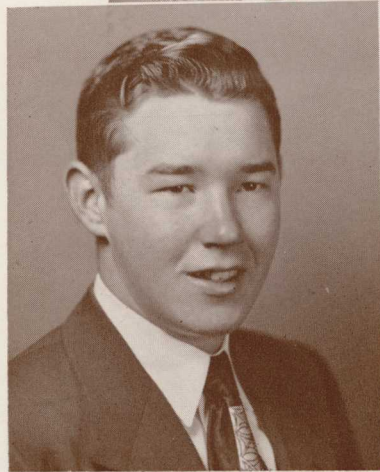


BARLOW  
DiLAVORE  
HAMILTON



## PRESIDENTS

LEROY SMITH . . . . *Fall Quarter*  
BOB GARY . . . . *Winter Quarter*



CHAMPION DEBATERS  
BOBBY BARLOW  
PHILIP DiLAVORE, III  
BOB HAMILTON

*First row:* James Israel, Bob Gary, Leroy Smith, Travis Barnes, Robert Rigsby, Eduardo del Rio, Pedro de la Torre.  
*Second row:* David Cowart, John Love, Donald Welch, Grady Parrish, Donald Brown, Marvin Pulliam, Hoyt Allen.  
*Third row:* Edward Patrick, Hoyt Picklesimer, Dale Cheely, Clifford Weathers, Earl Nunn, A. J. Heaton. . . . *Fourth row:* Paul Drake, Robert Kempson, Zell Kates, Gaston Pollock, William Miller, Albert Taylor, William Moore, Lamar Adair. . . . *Fifth row:* Maston Cooper, Bobby Fitzpatrick, James Clary, Bob Hamilton, Charles Kilpatrick, Kenneth Brown, Felix Palmer. . . . *Sixth row:* Frank Griffin, James Helton, Robert Ritch, Meigs Whittaker, Thomas Cone, Johnny Gibson, William Roberts, Billy Lange.



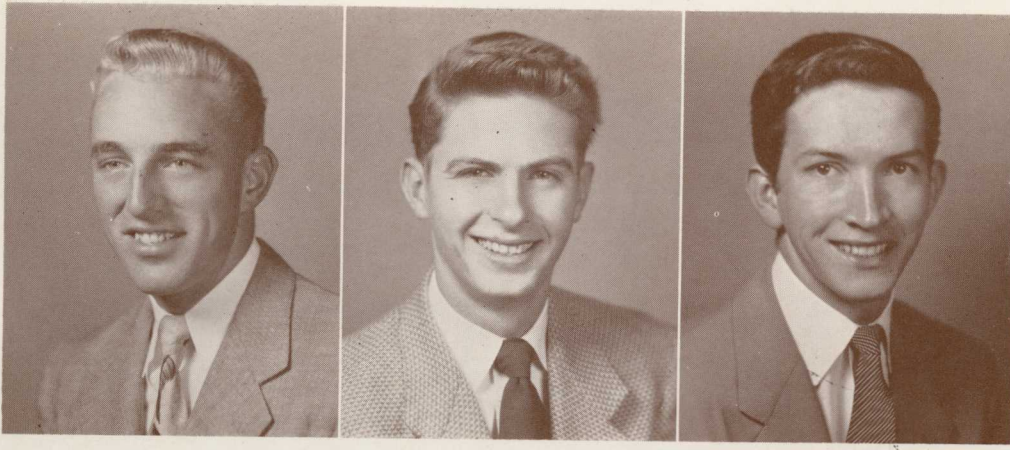
# SUSAN B. HARRIS SOCIETY



JEANETTE TATUM . . . . . *President*

*Left to right:* Little Luke Rushton, Mascot. . . *First row:* Mary Kersey, Betty Langford, Jean Clegg, Eunetta Purvis, Jeanette Tatum, Pat Pease, Loretta Whitley, Alma Williams, Elizabeth White. . . *Second row:* Sylvia Jackson, Barbara Black, Alice Jones, Martha Prince, Peggy Rackley, Hazel Toles, Peggy Stone, Anne Hemphill, Becky Stuckey. . . *Third row:* Patsy Mealor, Evelyn Burns, Joan Woodall, Joyce Eidson, Mary Prince, Marie Meadows, Joyce Smith, Jackie Spivey, Amanda Harrell. . . *Fourth row:* Carmen Diaz, Peggy Sue Barfield, Virginia Deitz, Jerry Smyth, Betty Ruth Dinkins, Thelma Roberts, Nellie Rogers. . . *Others:* Johnnie Sue Freeman, Betty Andrews, Ann West, Charlotte Edwards, Martha Axley, Celeste Maxwell, Jeannine English.





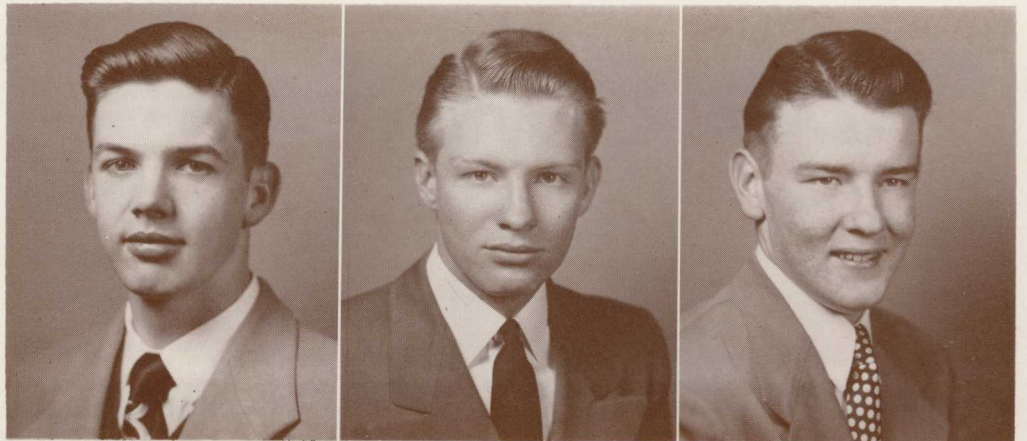
PHI CHI  
DEBATING SOCIETY

JOHN "Mac" HAYNIE  
ZELL MILLER  
BILL VEATCH

WASHINGTON DAY SPEAKERS

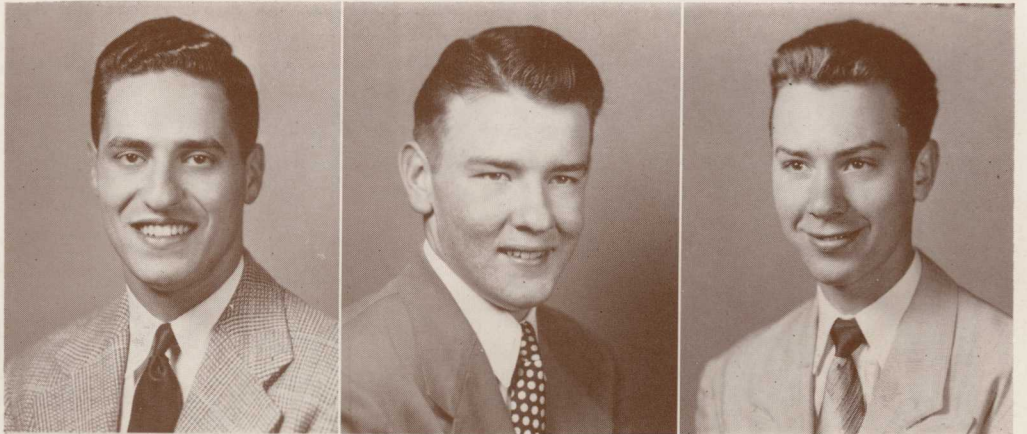
YOUNG HARRIS  
DEBATING SOCIETY

BOBBY BARLOW  
DAVID COWART  
BOB GARY

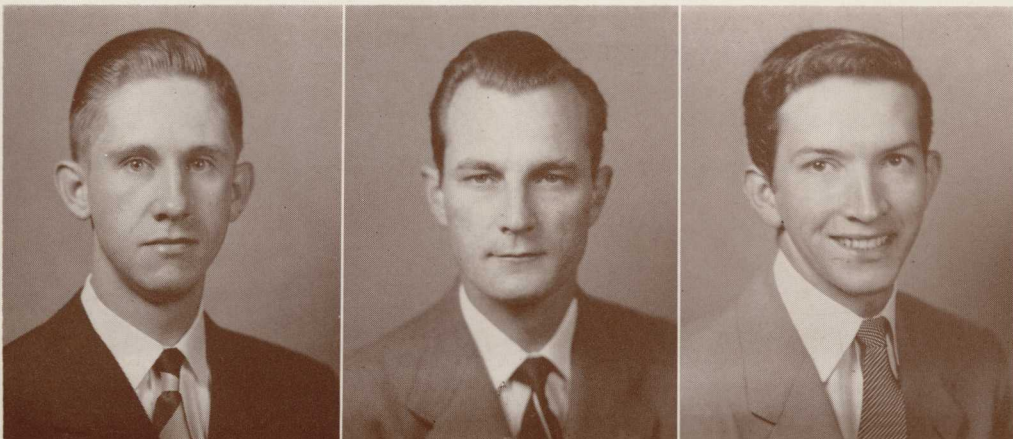


YOUNG HARRIS  
DEBATING SOCIETY

PHILIP DiLAVORE, III  
BOB GARY  
DONALD WELCH



GRADY MILLER SPEAKERS CONTEST



PHI CHI  
DEBATING SOCIETY

ROBERT A. CLAY, JR.  
JOHN FINCHER  
BILL VEATCH

# COMMERCIAL CLUB

## OFFICERS

- MILDRED BENTLEY . . . . . *President*  
 Winter Quarter
- BETTY JEAN JOHNSON . . . . . *Vice-President*  
 Winter Quarter; *President*, Fall Quarter
- BETTY McMILLIN . . . . . *Secretary*  
 Fall Quarter
- MARTHA AXLEY . . . . . *Secretary*  
 Winter Quarter
- CHESTER AUSTIN . . . . . *Treasurer*
- MR. HORTON . . . . . *Faculty Sponsor*



BENTLEY

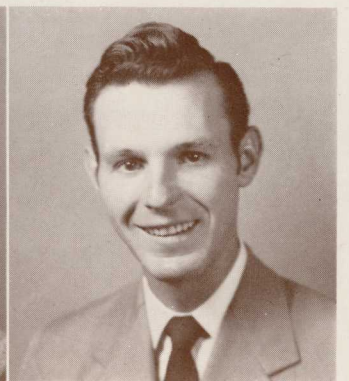


JOHNSON

McMILLIN

AXLEY

AUSTIN



*First row:* John Barwick, Betty Jean Johnson, Betty McMillin, Martha Axley, Midge Bentley, Jerry Smyth, Pedro de la Torre. . . . *Second row:* Marqus Tillman, Ellen Rose Helton, Mr. Tom Horton, Betty Langford, James Israel, Chester Austin, Eduardo del Rio.



# SCHUBERT MUSIC CLUB



*Seated:* Dean Wright, Peggy Hale, Joyce Eidson, Gerry Galloway, Joan Crawford, Bob Gary, Eunetta Purvis, Grady Parrish. . . . *Second row:* Betty Jane Shuler, Martha Axley, Loretta Whitley, Carmen Gutierrez, Mrs. Walter Downs (Sponsor). . . . *Third row:* Felix Palmer, Paul Drake, Chester Austin, and Kenneth Brown.

*First row:* Jean Clegg, Martha Axley, Loretta Whitley, Pat Pease, Eunetta Purvis, Joyce Lynch, Mary Knight, Carmen Gutierrez, Jeannine English, Becky Stuckey. . . . *Second row:* Mrs. Laurence Atkins, Miss Roxanna Austin, Mrs. Luke Rushton, Joyce Eidson, Bessie Snow, Miss Edna Herren, Ann Woods, Barbara Black, Alma Williams, Dean Wright, Miss Hilda McCurdy. . . . *Third row:* David Cowart, Theodore Wood, David Barnes, Donald Welch, Travis Barnes, Maurice Moore, Leroy Smith, Grady Parrish, Philip DiLavore, Bob Gary, Charles Kilpatrick.

# THE YOUNG HARRIS COLLEGE CHOIR





## MINISTERIAL CONFERENCE

*First row:* Bob Gary, Bob Hawkes, Carmen Gutierrez, Anne Hemphill, Jean Clegg, Pat Mealor, Barbara Black, Alma Williams, Betty Andrews, Donald Welch, Mary Kersey, Maston Cooper. . . *Second row:* Clifford Weathers, Narvel Lassiter, Midge Bentley, Joyce Lynch, Philip DiLavore, Cecil Dudley, Johnnie Gibson, Robert Rigsby, Charles Kilpatrick, Joyce Eidson, Buford Fulford. . . *Third row:* Gaston Pollock, James Clary, Dale Cheely, Marvin Pulliam, Travis Barnes, Rev. John Cobb (Sponsor), Carroll Crosby, Hoyt Allen, Grady Parrish, Leroy Smith, David Cowart. (Loretta Whitley, not pictured.)

*First row:* Maurice Moore, Jeanette Tatum, Marvin Pulliam, Bob Gary, Grady Parrish, Mr. Humphreys (Sponsor), Midge Bentley, Joyce Lynch, Jeannine English. . . *Second row:* Betty Jean Johnson and Betty Andrews.



## METHODIST STUDENT FELLOWSHIP COUNCIL

ALPHA  
PSI



*Left to right, seated:* Ann West and Anne Hemphill. . . . *Standing:* Betty Langford, Betty Ruth Dinkins, Charlotte Edwards, Mary Herrington, Loretta Whitley, Miss Cornelia Chappell (Sponsor), Betty Jane Shuler, Mary Prince, Jerry Smyth, Peggy Rackley, Joyce Smith, Ann Woods, Carmen Gutierrez, Martha Prince, and Alice Jones.

*Left to right, standing:* Betty Andrews and Jeanette Tatum. . . . *On columns:* Joyce Lynch, Peggy Sue Barfield, Jean Clegg, and Betty Langford. . . . *First row:* Barbara Black, Patsy Mealor, Ann West, Amanda Harrell, and Martha Dean Wright. . . . *Second row:* Betty Ruth Dinkins, Peggy Stone, Edna Bruce, Rachel Thornton, and Joanne Johnston. . . . *Third row:* Ann Woods, Miss Cornelia Chappell (Sponsor), Carmen Gutierrez, and Thelma Roberts.

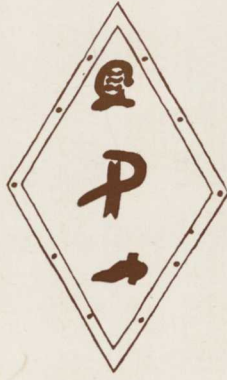
YOUNG  
LADIES  
CIRCLE





SPEIR

# DORCAS CLUB



LYNCH

## PRESIDENTS

MILDRED SPEIR . . . . . *Fall Quarter*

JOYCE LYNCH . . . . . *Winter Quarter*

## "RATS"

BARBARA BLACK

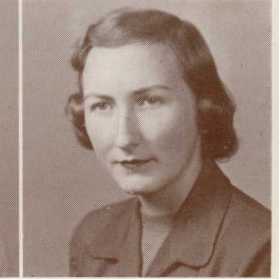
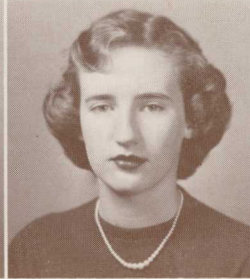
ANN BUTTS

JOYCE EIDSON

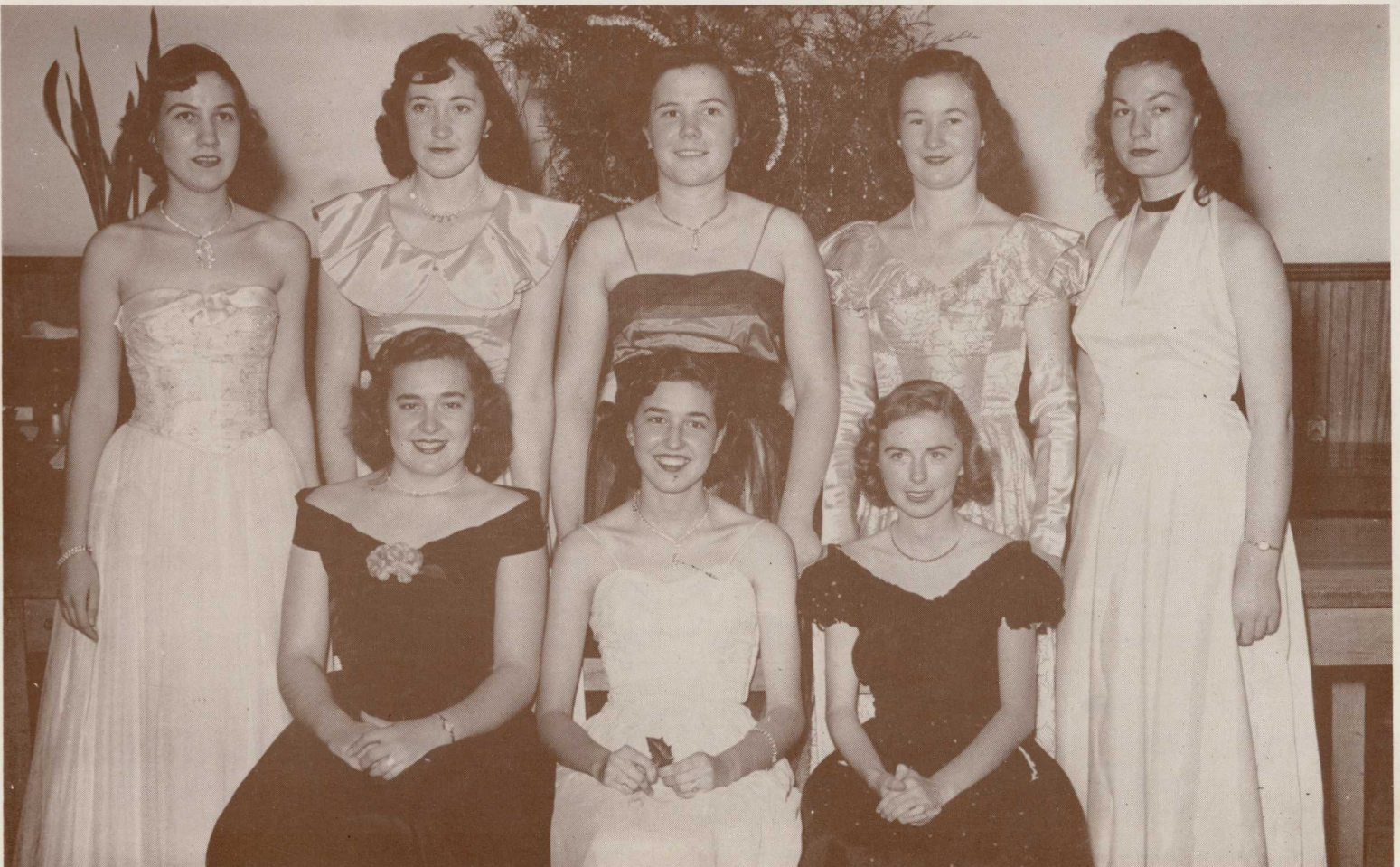
JEANNINE ENGLISH

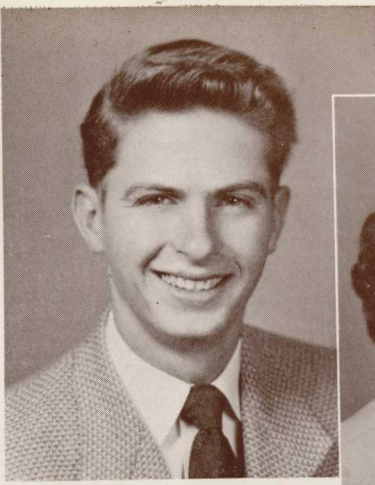
PEGGY HALE

PEGGY WHITENER



*Left to right, first row: Mildred Speir, Eunetta Purvis, Betty Jean Johnson. . . Second row: Joyce Lynch, Barbara McDarris, Jeanette Tatum, Lillian Stewart, Johnnie Sue Freeman. (Edna Bruce, not pictured.)*





MILLER



BENTLEY

# ENOTAH ECHOES STAFF

ZELL MILLER . . . . . *Editor, Fall Quarter*  
 MILDRED BENTLEY . . . *Editor, Winter Quarter*  
 MARVIN PULLIAM . . . *Associate Editor, Winter Quarter*  
 PROFESSOR ROBERT ANDRESS . *Faculty Consultant*

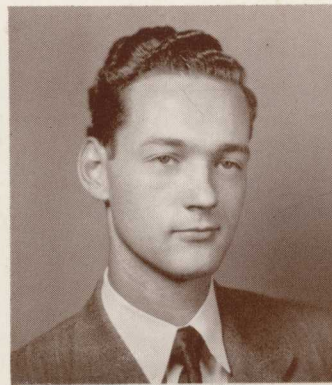
## THE STAFF

JIMMY MARLOWE . . . . . *News Editor*  
 PHILIP DiLAVORE . . . . . *Assistant News Editor*  
 JOYCE LYNCH . . . . . *Business Manager*  
 BOB GARY . . . . . *Assistant Business Manager*  
 ELLEN ROSE HELTON . . . . . *Feature Editor*  
 BETTY JEAN JOHNSON . . . . . *Society Editor*  
 BILL VEATCH . . . . . *Sports Editor*  
 JIMMY PERKINS . . . . . *Assistant Sports Editor*  
 JIMMY FORRESTER . . . . . *Assistant Sports Editor*  
 BETTY ANDREWS . . . . . *Alumni Editor*  
 MARCUS TILLMAN, JR. . . . . *Circulation Manager*  
 JOHNNIE GIBSON . . . . . *Assistant Circulation Manager*  
 CHARLES NELSON . . . . . *Assistant Circulation Manager*

NEWS STAFF: Carmen Gutierrez, Renee Lanier, Robert Rigsby, Joyce Eidson, Grady Parrish, David Barnes, Jerry Smyth, Clinton Parker, Lamar Adair, William Wren.

TYPING STAFF: Martha Axley, Libby Harber, Joan Woodall, James Israel, Betty Langford.

FACULTY ADVISER: Mrs. M. C. Myers.



PULLIAM



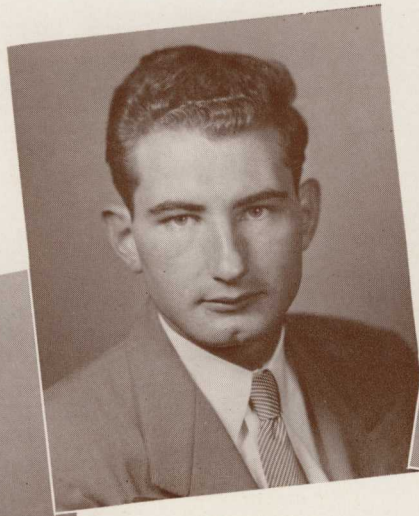
ANDRESS

*Left to right, first row: DiLavore, Harber, Smyth, Langford, Johnson, Andrews. . . . Second row: Nelson, Parker, Bentley, Axley, Woodall, Gutierrez, Lynch. . . . Third row: Andress, Gary, Wren, Barnes, Gibson, Adair, Parrish. . . . Standing: Miller, Veatch, Forrester, Pulliam.*



# VETERANS CLUB

NEWSOME



McCONNELL



AUSTIN

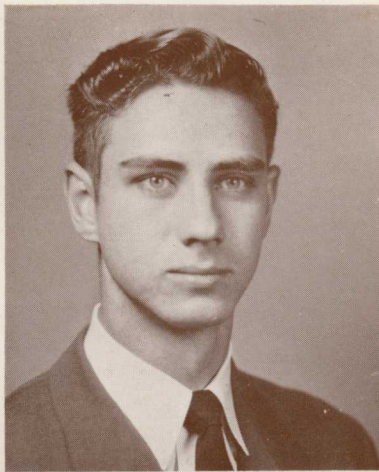
FINCHER



MILTON NEWSOME . . . . . *President*  
 GENE McCONNELL . . . . . *Vice-President*  
 CHESTER AUSTIN . . . . . *Secretary*  
 JOHN FINCHER . . . . . *Treasurer*

*Seated:* Buford Fulford, Cecil Dudley, Milton Newsome, Chester Austin. . . *Standing:* Carl Mashburn, Thomas Harris, Gene McConnell, James Curtis, John Fincher.





SMITH



TATUM

# STUDENT COUNCIL

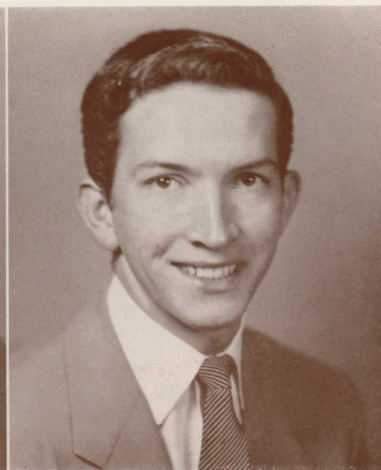
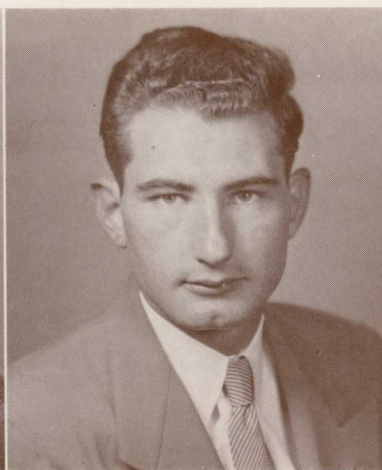
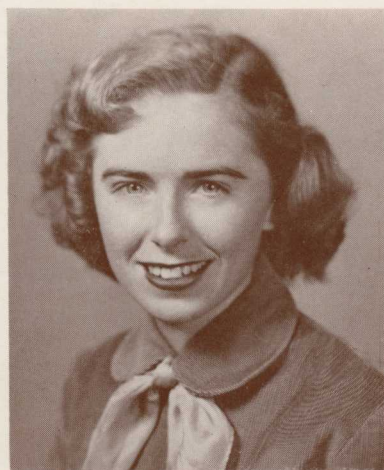
- LEROY SMITH . . . . . *President*
- JEANETTE TATUM . . . . . *Vice-President*
- BETTY JEAN JOHNSON . . . . . *Secretary*
- GENE MCCONNELL . . . . . *Solicitor General*  
Fall Quarter
- BILL VEATCH . . . . . *Solicitor General*  
Winter Quarter

JOHNSON

MCCONNELL

VEATCH

*First row:* Barbara Ledford, Betty Jean Johnson. . . *Second row:* Meigs Whittaker, Loretta Whitley, Bill Veatch, Richard Ross, Mildred Speir, Philip DiLavore, Robert Hamilton. . . *Third row:* Jeannine English, Jeanette Tatum, Robert Rigsby, Johnnie Sue Freeman, Leroy Smith, Maurice Moore. . . *Fourth row:* Anne Hemphill, Travis Barnes, Thelma Roberts, Chester Austin, James Israel, Patricia Pease, Martha Axley.





**SUPREME  
COURT**

*Seated:* Martha Prince, Mrs. M. C. Myers, Miss Hilda McCurdy, Ann West. . . . *Standing:* Maston Cooper, Mr. W. L. Downs, Mr. C. R. Clegg, Mr. Robert P. Address, "Mac" Haynie.

*Seated:* Anne Hemphill, Johnnie Sue Freeman, Jeanette Tatum, Mildred Speir, Pat Pease. . . . *Standing:* Barbara Ledford, Jeannine English, Loretta Whitley, Thelma Roberts, Martha Axley, Betty Jean Johnson.

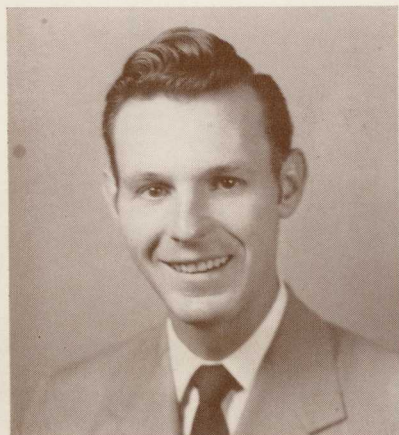
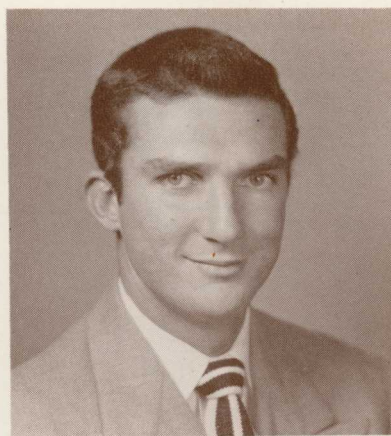


**APPLEBY  
HOUSE  
COUNCIL**

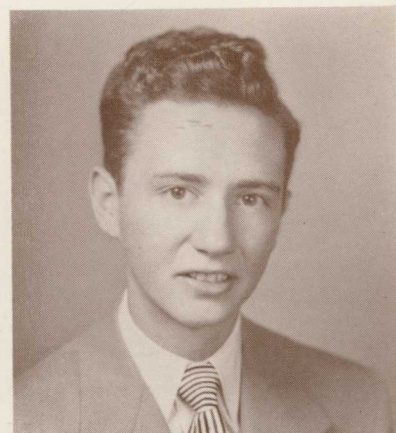
BILL VEATCH  
President



JAMES HUTTO  
Vice-President



CHESTER AUSTIN  
Secretary



EDGAR JENKINS  
Treasurer



Left: "Zip" Miller, "Red" Ross, "Mac" Haynie.  
Right: Theodore Wood, James Teal, "Bud"  
Moore, John Cable, Bob Gary, Robert Reed,  
Jimmy Forrester.



BETTY JEAN JOHNSON

# ALPHA HONOR SOCIETY

For several years there have been no students eligible for the Alpha Honor Society; eligibility consists of one's having made 90 or more in each subject for three successive quarters. This year there are five students who have achieved this distinction, and the ENOTAH Staff wishes to give them this recognition.

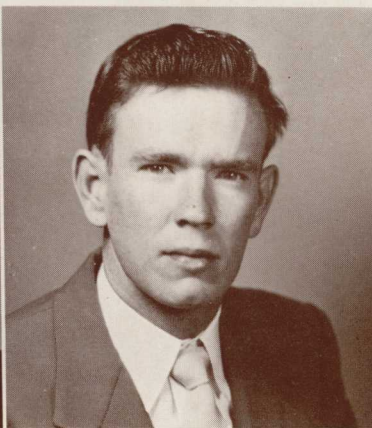
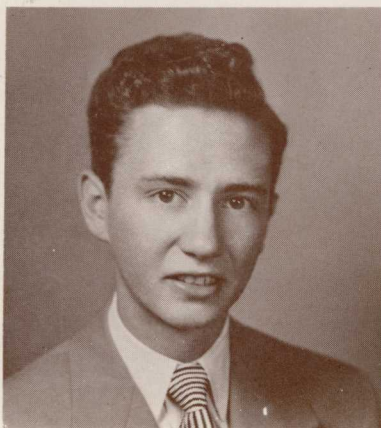


THELMA ROBERTS

EDGAR JENKINS

MAURICE MOORE

MEIGS WHITTAKER



*Seated:* Felix Palmer, Barbara Black, Joyce Eidson, Mary Kersey, Travis Barnes, James Helton, Maston Cooper. . . . *Second row:* Loretta Whitley, Pat Mealor, Miss Lura Harrison (Sponsor), Rachel Thornton, Jean Clegg, Edgar Jenkins, Robert Rigsby, Joyce Lynch, David Cowart. . . . *Third row:* Johnny Gibson, Truett Crumley, Bob Gary, Ben Jinkins, Bob Hamilton, Charlotte Edwards, Grady Parrish, Marvin Pulliam, Leroy Smith.

## INTERNATIONAL RELATIONS CLUB



# ENOTAH STAFF



*First row: Eunetta Purvis, "Flip" DiLavore, Joan Woodall, Marvin Pulliam, Pat Pease, Zell Miller, Loretta Whitley, Johnnie Gibson, Ellen Rose Helton, Carmen Gutierrez. . . . Second row: Betty Jean Johnson, Miss Herren, Midge Bentley, Joyce Lynch, "Gulley" Parrish, June Campbell, Robert Riggsby, James Helton, Lamar Adair.*



MILLER



PEASE



ADAIR

## The ENOTAH Staff

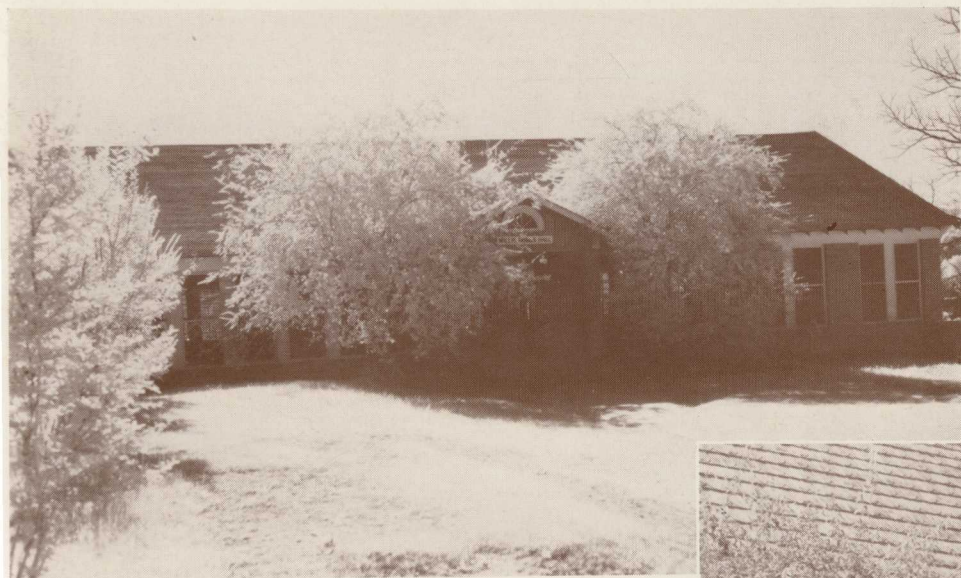
ZELL MILLER . . . . . *Editor*  
 PAT PEASE . . . . . *Associate Editor*  
 LAMAR ADAIR . . . . . *Business Manager*  
 EDGAR JENKINS . . . . . *Advertising Manager*

ROBERT RIGSBY . . . . . *Promotions Manager*  
 BETTY JEAN JOHNSON . . . . . *Literary Editor*  
 MISS EDNA HERREN . . . . . *Faculty Adviser*  
 MIDGE BENTLEY . . . . . *Secretary*

JOYCE LYNCH . . . . . *Promotions Manager*

and

Beverly Boling, June Campbell, Philip DiLavore, Johnny Gibson, Carmen Gutierrez, Ellen Rose Helton, James Helton, James Hutto, Grady Parrish, Marvin Pulliam, Eunetta Purvis, Danice Turner, Bill Veatch, Loretta Whitley, and Joan Woodall.



We shall remember Willis Dobbs Hall more familiarly as the "Hash Hall," and through the years we'll be wondering if they're still having BEANS.



The Library . . . the place where you can always find today's comic section.



*Above:* President Clegg accepts the Merle B. Mann collection of Indian relics from Mrs. Mann. The collection is considered one of the most valuable in the country. The gift is a memorial to Mr. Mann and is on display in the library. . . . *Right:* Mrs. Tolar shows some of the students Dr. Sharp's library, which was presented to the College by his wife, Mrs. J. A. Sharp, in his memory. Hoyt Allen examines Dr. Sharp's walking stick; Lillian Stewart, his desk; and Carmen Diaz, his books. The first room of the lower floor of the library building has been used to house this collection; the room was formerly the office of the president of the school.

# FEATURES



*We who have been filled with the Young Harris spirit shall continue to love our Alma Mater and shall perpetuate the memory of that which has been felt deep in our hearts.*

*College* . . . . . **BEST ALL-ROUND**

*Jeanette Tatum and Maurice Moore*





*College* . . . . . **BEST LOOKING**

**Anne Hemphill and Bill Veatch**

*College* . . . . . **MOST POPULAR**

*Jeanette Tatum and Zell Miller*





*College* . . . . . **MOST INTELLECTUAL**

*Betty Jean Johnson and Maurice Moore*

*College* . . . . . **BEST DRESSED**

*Joyce Lynch and Chester Austin, Jr.*





*College* . . . . . **MOST ATHLETIC**

**Mildred Speir and James Hutto**

*College* . . . . . **WITTIEST**

**Midge Bentley and Bill Veatch**





**Academy . . . . . BEST ALL-ROUND**

**Faye Knott, June Campbell, and Paul Langford**

*Beauty Contest Winners*



**MISS ANNE HEMPHILL**  
*Sponsored by Alpha Psi*



**MISS JOHNNIE SUE FREEMAN**  
*Sponsored by Dorcas Club*



**MISS GENEVA SMITH**  
*Sponsored by Phi Delta Society*



**MISS JEANNINE ENGLISH**  
*Sponsored by Commercial Club*



**MISS BARBARA LEDFORD**  
(Mrs. Jack Little)  
*Sponsored by Student Council*



**MISS ALMA WILLIAMS**  
*Sponsored by Ministerial Conference*

## EDITOR'S NOTE

We are indebted to a great number of people for the many things it took to make this annual possible:

To Mr. Humphreys, for his great help and patience in making many of the photographs in this book;

To our advertisers, whom we recommend to you for their interest in our Alma Mater;

To the people who have helped in the getting of ads;

To those who contributed to our paper drive;

To those staff members who have done consistent work and have shown a readiness to help in any way;

To Mrs. Morgan, of the Photo-Process Company, for her help in working out our theme; to Mr. Young, of Foote & Davies, for his continued interest in our annual; and to Mr. Phillips and Mr. Gaspar, of Gaspar-Ware, for their help with our photography;

And especially to Miss Herren, the one person to whom your editor will be forever grateful. Without her tireless energy and without her guidance this annual would not be the success that it is, nor would the other ones on which I have worked with her.

To those heretofore mentioned, to Miss Herren, and to all those who have helped in even the smallest way, I express my deepest appreciation.

Sincerely,

ZELL MILLER, *Editor*

**HIAWASSEE HARDWARE COMPANY**

BUILDING MATERIAL, ELECTRICAL SUPPLIES

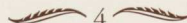

SEED and FERTILIZER

Hiawassee, Georgia

PAUL E. PARIS

DICK PARIS

J. B. HUNT

 4   
Years

**CLAY HARDWARE**

INTERNATIONAL PARTS

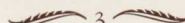
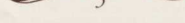
*General Hardware*

Hayesville, North Carolina

"BABE" MOORE, *Manager*

PAUL E. PARIS

J. B. HUNT

 3   
Years


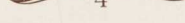
**BLAIRSVILLE HARDWARE AND SUPPLY COMPANY**

Roofing, Sheet Rock, Cement, Windows and Doors, Paints  
Seeds, Fertilizer, Spray Material, Farm Equipment, Electrical Supplies

BLAIRSVILLE, GEORGIA

PAUL E. PARIS

J. B. HUNT

 4   
Years

*Compliments of*

**MATHESON AND SWANSON**

LEON SWANSON, *Owner*

GENERAL MERCHANDISE and SCHOOL SUPPLIES  
BUS DEPOT AND AGENT

for

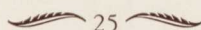
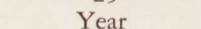
SMOKY MOUNTAIN TRAILWAYS

Service Coach Trailways

*"Through Service from North Georgia to the Sea"*

NEEL GAP TRAILWAYS

Ride the Bus and Save the Difference

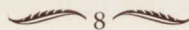
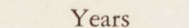
 25   
Year

*Compliments*

*of*

**MURPHY HARDWARE CO.**

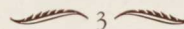
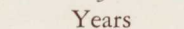
R. C. MATTOX, *Owner*  
Murphy, North Carolina

 8   
Years

*VISIT*

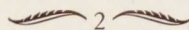
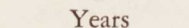
**THE LITTLE STORE**

School Supplies — Stationery  
Notions — Greeting Cards  
and  
That "In-Between" Snack  
Located on the Campus  
YOUNG HARRIS COLLEGE

 3   
Years

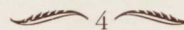
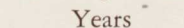
**MOUNTAIN VIEW CAFE**

REGULAR MEALS and SANDWICHES  
Young Harris, Georgia

 2   
Years

**LAWRENCE AND REBA'S CAFE**

CHICKEN — CHOPS  
SEA FOOD — SANDWICHES  
Refreshments  
YOUNG HARRIS, GEORGIA

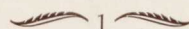
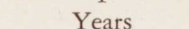
 4   
Years

**TRUDY'S**

LADIES' AND CHILDREN'S APPAREL

PHONE 142J

MURPHY, N. C.

 1   
Years

A MARK OF  
QUALITY FOODS

- CONSISTENT SAVINGS
- COURTEOUS SERVICE
- COMPLETE SATISFACTION



4  
Years

**Creamy  
Peanut Spread**



Children  
universally  
approve—grown  
folks prefer it  
because it is so  
palatable.

If you cannot purchase this in your home  
town—write us—P. O. Box J. S., Chicago (90)



D-16

5  
Years

**BLAIRSVILLE CLEANERS**

*All Work Guaranteed*  
D. L. MARTIN, Prop.

ALTERATIONS and MENDING  
Lower Prices and Expert Dye Work  
Blairsville, Georgia

3  
Years

*Compliments*

*of*

**HOTEL MILTON**

BLAIRSVILLE, GEORGIA

4  
Years

**HARRISON-DRAUGHON SCHOOL OF  
COMMERCE, INC.**

579 Peachtree St., N. E. Atlanta, Ga.  
A school of superior merit for those who wish to  
receive better training than the ordinary business  
school is prepared to give.

1 Year

**Support Your**

**ENOTAH**

**Advertisers**

*Compliments of*



EST. 1901

"World's Largest Pest Control Company"  
1 Year

**HORTON'S SERVICE STATION**

*"We Cheat You Right"*

Where U. S. Highways 49 and 158 cross  
Roxboro, North Carolina

1  
Year

*Compliments of Your Alma Mater*

**YOUNG L. G. HARRIS COLLEGE**

YOUNG HARRIS, GEORGIA

A JUNIOR COLLEGE UNDER THE CONTROL

OF THE

**NORTH GEORGIA CONFERENCE**

C. R. CLEGG, *President*

L. C. ATKINS, *Registrar*

MRS. LUKE RUSHTON, *Bursar*

— 20 —  
Years

*Compliments*

*of*

**A FRIEND**

*Compliments of*

**WRITE RIGHT  
SCHOOL SUPPLIES**

— 1 —  
Year

**WHITAKER AND GARRETT**

*Wholesale Distributors*

CANDIES — TOBACCOS — SUNDRIES  
PATENT MEDICINES

810 W. Broad Street Phone 1975

— 1 —  
Year

**SERVICE COACH LINES SYSTEM**

Service Coach Lines, Inc.

Service Bus Lines, Inc.

Neel Gap Bus Line, Inc.

*Charter Service Also Available*

Chattanooga

Murphy

Young Harris

Gainesville

Athens

Macon

Dublin

Vidalia

Glennville

Jesup

Savannah

Brunswick

Augusta

Jacksonville



DUBLIN, GA.

— 12 —  
Years

**BANK OF HIAWASSEE**

MEMBER FEDERAL DEPOSIT INSURANCE CORPORATION

Resources over \$1,000,000

DO BUSINESS WITH YOUR LOCAL BANK

J. Y. DENTON, *Cashier*

7  
Years

**J. Y. DENTON AND SON  
INSURANCE AND REAL ESTATE AGENCY**

"WE SELL ALL KINDS OF INSURANCE"

*We Buy and Sell Real Estate*

HIAWASSEE, GEORGIA

3  
Years

**SAILORS MOTOR  
COMPANY, INC.**

*"There's a FORD in Your Future"*

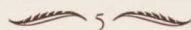


SALES and SERVICE

ELLIJAY, GEORGIA



PHONE 82



Years

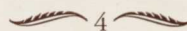
*Compliments  
of*

**THE BANK OF ELLIJAY**

Member of the Federal Deposit  
Insurance Corporation

**"LET THIS BANK PROTECT  
YOUR SAVINGS"**

ELLIJAY, GEORGIA



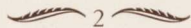
Years

*Compliments of*

**Tilmon Francis and Sons**

7 West Paces Ferry Road

ATLANTA, GEORGIA



Years

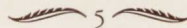
**K & K AUTO PARTS CO.**

AUTO, TRUCK, AND TRACTOR  
PARTS

*Distributors*

Phone 272

ELLIJAY, GEORGIA



Years

Betty Jean says:

**REMEMBER WHEN**

... the group went to Double Knob and certain members slid into mud and water?

... three girls got three reports for playing the piano in the chapel?

... Midge B. came to supper and forgot that she didn't have a blouse on under her coat until she was pulling it off?

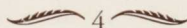
... Jeanette ate fifteen slices of bread?

... we had biology under Dr. Sprague?

*Compliments  
of*

**DR. ED W. WATKINS**

ELLIJAY, GEORGIA



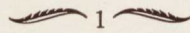
Years

*Compliments*

*of*

**REEVES HARDWARE  
COMPANY**

CLARKESVILLE, GEORGIA



Year

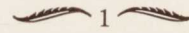
*Compliments*

*of*

**TURPEN DRUG  
COMPANY**

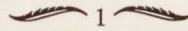
PRESCRIPTION DRUGGISTS

CLARKESVILLE, GEORGIA



Year

**MAYFIELD ICE CREAM**



Year

Midge says:

**REMEMBER WHEN**

... I fell up the stairs at Sharp Hall and literally shook the ground?

... Johnny Gibson almost lost his pants during the M. C. play?

... Brown's Store was burning and the lights went out in Appleby?

... Jeannine got tickled singing "Where Is My Wandering Boy Tonight"?

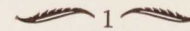
... Sarah King turned the water hose on the girls in the shower?

... Milton Newsome came to YHC, all he could say was "Aw-right"?

*Compliments of*

**BELK-GALLANT**

CLARKESVILLE, GEORGIA

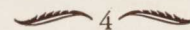


Year

*Compliments of*

**MR. AND MRS. E. C. NICHOLSON**

YOUNG HARRIS, GEORGIA



Years

# Compliments of

## The North Georgia News

BLAIRSVILLE, GEORGIA  
Official Town and County Paper  
IRA BUTT, *Editor and Publisher*

4  
Years

## COLWELL DRESS SHOP

BLAIRSVILLE, GEORGIA

4  
Years

## CARSWELL REXALL STORE

BLAIRSVILLE, GEORGIA

1  
Year

## LANCE DRY GOODS

BLAIRSVILLE, GEORGIA

2  
Years

## BEN F. CARR

BLAIRSVILLE, GEORGIA

2  
Years

## UNION HARDWARE

BLAIRSVILLE, GEORGIA

2  
Years

## BREWER DRUG COMPANY

CLARKESVILLE, GEORGIA

1  
Year

## RAMSEY'S FOOD MARKET

CLARKESVILLE, GEORGIA

1  
Year

## E. L. BROWN

YOUNG HARRIS, GEORGIA

4  
Years

## C. D. CORN, JR.

*General Merchandise*  
YOUNG HARRIS, GEORGIA

1  
Year

## JACK TARPLEY

*Attorney at Law*  
BLAIRSVILLE, GEORGIA

2  
Years

## WATSON'S DRUG STORE

*Where Everybody Meets*  
ELLIJAY, GEORGIA

3  
Years

## Hampton Motor & Tractor Company

BLUE RIDGE, GEORGIA

3  
Years

## BRIGHT SPOT CAFE

*Regular Dinners Served Sundays*  
Phone 75 ELLIJAY, GA.

1  
Year

## UNION COUNTY BANK

BLAIRSVILLE, GEORGIA

2  
Years

## Burch-Sherrill Motor Co.

MURPHY, NORTH CAROLINA

1  
Year

## JAKE SACKS COMPANY

*The Old Reliable*  
GAINESVILLE, GEORGIA

3  
Years

## Georgia Office Equipment Company

GAINESVILLE, GEORGIA

4  
Years

## Cherokee Furniture Co.

MURPHY, NORTH CAROLINA

6  
Years

## DAVIS JEWELERS

MURPHY, NORTH CAROLINA

3  
Years

## Jimmie Haynes Motor Co.

Phone 1471—318 E. Broad St.  
GAINESVILLE, GEORGIA

1  
Year

## Piedmont Drug Company

GAINESVILLE, GEORGIA

8  
Years

## Owen Osborne Hosiery Mills, Inc.

GAINESVILLE, GEORGIA

1  
Year

## Jimmie Reeves Furniture Company

GAINESVILLE, GEORGIA

7  
Years

**Pilgrim-Estes Furniture  
Company**

Complete Home Furnishers

LIVING ROOM, DINING ROOM,  
BEDROOM FURNITURE

SIMMONS BEAUTYREST MATTRESSES

RUGS AND CARPETS

PHILCO RADIOS AND TELEVISION

FRIGIDAIRE APPLIANCES

YOUNGSTOWN CABINET SINKS

WALL AND FLOOR CABINETS

*"We Sell for Less"*

GAINESVILLE, GEORGIA

13  
Years

**DICKEY AND DAVIS**

*Dealers in*

INTERNATIONAL TRUCKS

and

FARM MACHINERY

SEED

FERTILIZER

REFRIGERATION

MURPHY, NORTH CAROLINA

1  
Year

*Compliments of*

**AMERICAN THREAD COMPANY**

UNEXCELLED FOR SEWING COTTON, SILK,  
RAYON, AND WOOL MATERIALS

2  
Years

Ellen Rose says:

REMEMBER WHEN

. . . we sang "Happy Birthday" to Jimmy Perkins three times within two months?

. . . Bob Short peroxided his hair?

. . . Jeanette Tatum went to prayer meeting with Mickey Long?

. . . Mrs. Thornton broke the glass in the back door of Appleby to "shoo" off a male intruder?

. . . James Gilbert was here and was reported to take midnight swims in the creek?

. . . certain people answered to these names: "Billiard Top", "Moptop", "Frank", "Gulley", "Squirt Blossom", and "Molly"?

**HOLDEN AND RACKLEY  
DEPARTMENT STORE**

*We Fit the Family in Ready-to-Wear*

Phone 111

ELLIJAY, GEORGIA

1  
Year

**SMALL AND ESTES**

Bakers

of

**AUNT BETTY'S  
BREAD AND CAKE**

GAINESVILLE, GEORGIA



12  
Years

*Compliments*

*of*

**CARTER GROCERY  
COMPANY**

GAINESVILLE, GEORGIA



4  
Years

*Compliments  
of*

**Frierson-McEver Company**

QUALITY APPAREL FOR MEN

GAINESVILLE, GEORGIA

17  
Years

*Compliments  
of*

**Gallant Belk Company**

*Gainesville's Largest and Best  
Department Store*

GAINESVILLE, GEORGIA

5  
Years

June C. says:

REMEMBER WHEN

. . . Mrs. Clegg dressed as "Grandma" in the comic section?

. . . Kay High got her clothes sewed up?

. . . Faye Knott had "eye trouble" after a red-headed visitor was on the campus?

. . . Coach Rushton had Paul Langford imitating a duck?

. . . Melton Martin's perfect catch of a fly ball was spoiled by an unexpected fall?

. . . anybody needed a costume, Miss Herren's blue-checked skirt always appeared "in the act"?

. . . the Senior Class boys and girls played basketball against the Freshman Class?

**J. C. PENNEY  
CO.**

*"Where Savings Are Greatest"*

GAINESVILLE, GEORGIA

4  
Years

**WALL, INC.**

*Jewelers*

GORHAM  
REED AND BARTON  
SILVER  
GIFT SHOP  
104 N. Bradford Street  
GAINESVILLE, GEORGIA

3  
Years

**JACKSON'S  
FLOWERLAND FLORIST**

QUALITY FLOWERS FOR ALL  
OCCASIONS

West Washington at Grove  
Telephone 94  
GAINESVILLE, GEORGIA  
*Flowers by Wire Everywhere*

9  
Years

*Compliments of*

**Office Machine Company**

*Distributor for*

**ROYAL TYPEWRITERS**  
GAINESVILLE, GEORGIA

4  
Years

**DAVIS-WASHINGTON  
COMPANY**

BUILDING MATERIALS

GAINESVILLE, GEORGIA

14  
Years

HEY, LOOK!

You see that number at the bottom of each ad? That indicates the number of years that the advertiser has helped to make your annual possible. Why not tell him how much you appreciate it? And thank all the new ones who have recently become acquainted with the ENOTAH.

*Compliments of*

**GIBBS HARDWARE AND AUTO SUPPLY**

MURPHY, NORTH CAROLINA

9  
Years

*Compliments of*

**UTOPIA DRY CLEANERS**

SAVANNAH, GEORGIA  
Home Town of Alice Jones

1  
Year

*Compliments  
of*

**A FRIEND**

*Compliments of*

**CITY ICE COMPANY**

GAINESVILLE, GEORGIA

4  
Years

*Compliments of*

**Holloway Lumber and Coal Corp.**

ATLANTA, GEORGIA  
Home Town of Bob Gary

1  
Year

*Compliments of*

**DORIAN'S TAILOR SHOP**

FORT BENNING, GEORGIA  
Home Town of Joyce Stuckey

1  
Year

COMPLIMENTS OF

**Stovall's 5, 10, 25c Store**  
CLEVELAND, GEORGIA

2  
Years

**SMITH'S SODA SHOP**  
CLEVELAND, GEORGIA

1  
Year

**THE PEOPLES BANK**  
CLEVELAND, GEORGIA

3  
Years

**LAKE LODGE**

Delicious Home-Cooked Food  
Rooms with Private Bath  
HIAWASSEE, GEORGIA

1  
Year

**PROSSER MOTOR CO.**

DESOTO - PLYMOUTH  
WHITE TRUCKS  
Phone 1941  
GAINESVILLE, GEORGIA

1  
Year

**IMPERIAL PHARMACY**

*Your Best Drug Store*  
GAINESVILLE, GEORGIA

5  
Years

**HILL TOP CABINS**  
MODERN CABINS  
WORTH HEDDEN, *Owner*  
HIAWASSEE, GEORGIA

2  
Years

**ROSS SERVICE STATION**  
PURE OIL PRODUCTS  
*General Repair*  
YOUNG HARRIS, GEORGIA

3  
Years

Pat P. says:

REMEMBER WHEN

- . . . the boys tied "Gulley" to the pole?
- . . . Donald Welch made a hasty descent down the flag pole?
- . . . Miss Harrison would give a "little" test in history?
- . . . Mrs. Rushton went to the restaurant in Asheville before the Mars Hill game?
- . . . Milton wouldn't help Jeannine off the horse and another man came to her rescue?

Jean says:

REMEMBER WHEN

- . . . the Spat "rats" were showered with water(?) at Appleby Hall?
- . . . the choir went to Atlanta and nobody slept?
- . . . the mail came, and how everybody would gather round . . . and the resulting excitement or disappointment?
- . . . it snowed and the boys lined up outside the "Hash Hall" daring anyone to come out?
- . . . Buddy Squire used to dress up in his white suit, ribbons, and jewelry?

FRANK ABERNATHY

**FURNITURE COMPANY AND FUNERAL HOMES**

NEW AND USED FURNITURE

*Marry the Girl and We'll Furnish the Home*

*She Trusted You—So Will We*

YOUNG HARRIS, GEORGIA

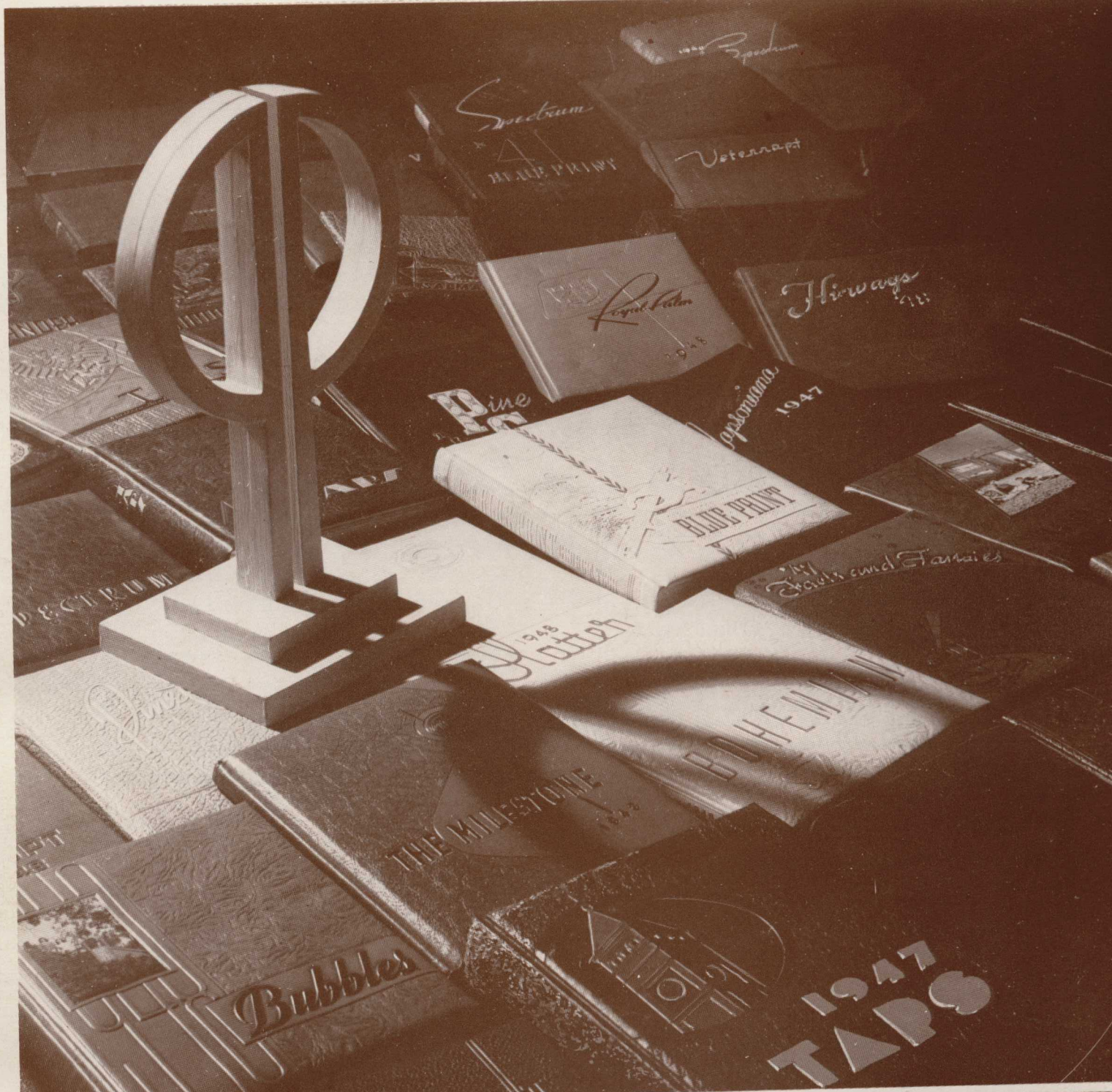
Phone Baldview 2

BLAIRSVILLE, GEORGIA


Phone 77

YOUNG HARRIS, GEORGIA

3  
Years



*PHOTO PROCESS*  
*Engraving Company*  
ATLANTA



*Since the dawn of the century...*

WE HAVE SPECIALIZED  
IN THE PRODUCTION OF  
OUTSTANDING COLLEGE  
AND HIGH SCHOOL  
YEARBOOKS



FOOTE & DAVIES, INC.

PHONE WALNUT 4600

POST OFFICE BOX 5109

ATLANTA

