

DUCKWORTH LIB., YOUNG HARRIS COLLEGE

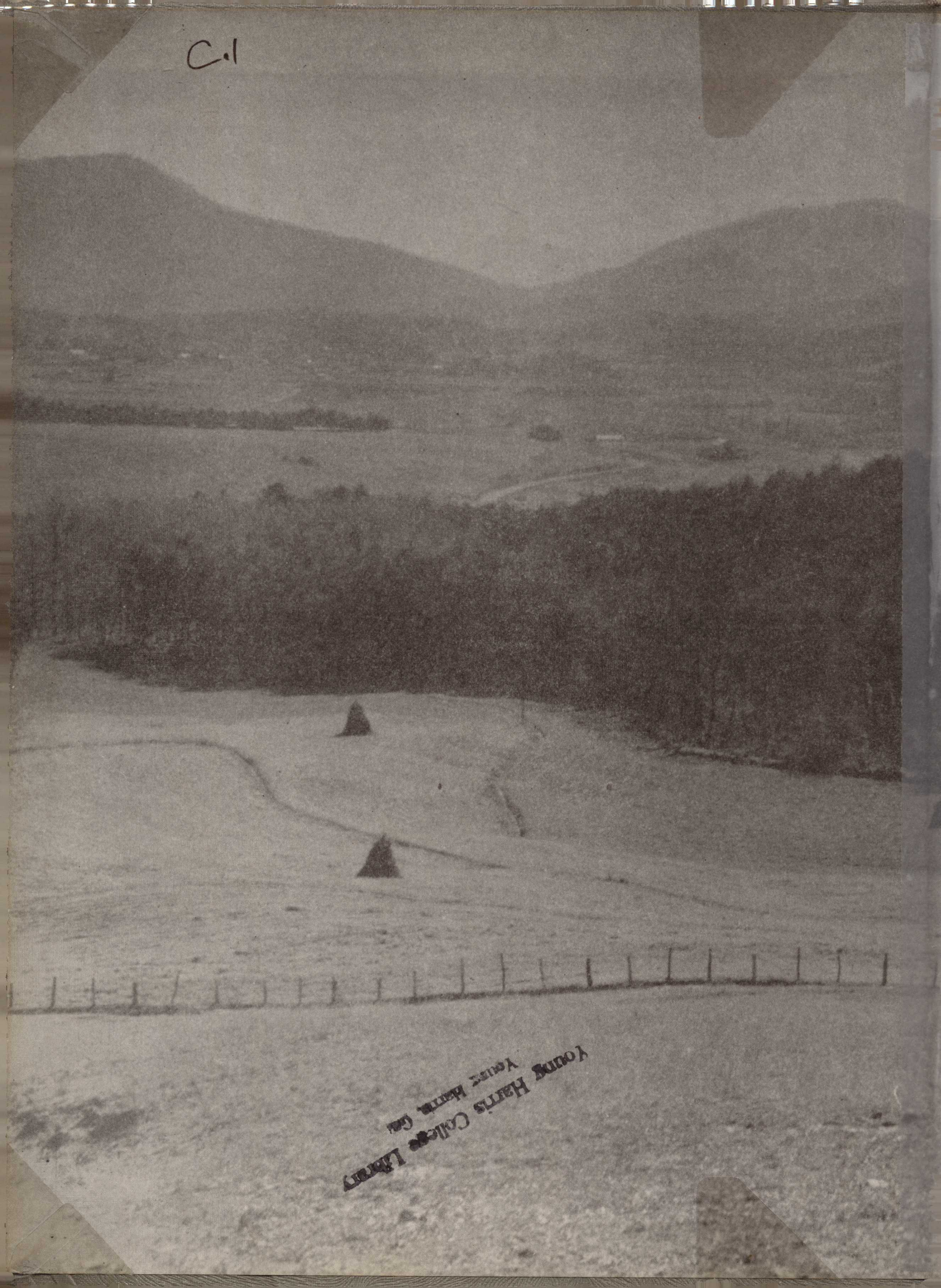


5 0839 00108268 4

The  
1949

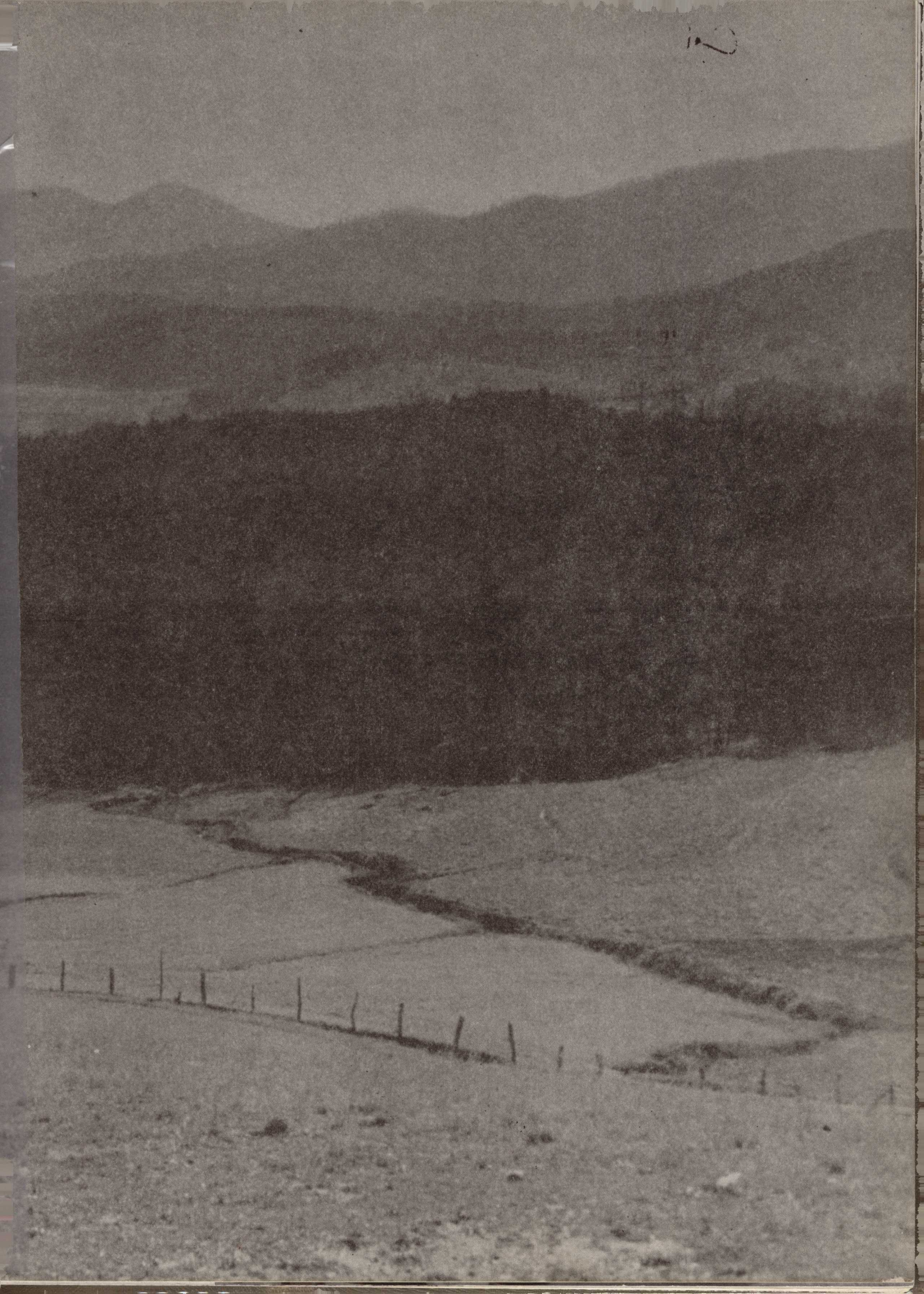
Enotah

C.1



YOUNG HARTS College Library  
Young Harts, Ga.

2



*The*  
1949

# ENOTAH

STAFF

wishes to show in this

twenty-fourth volume

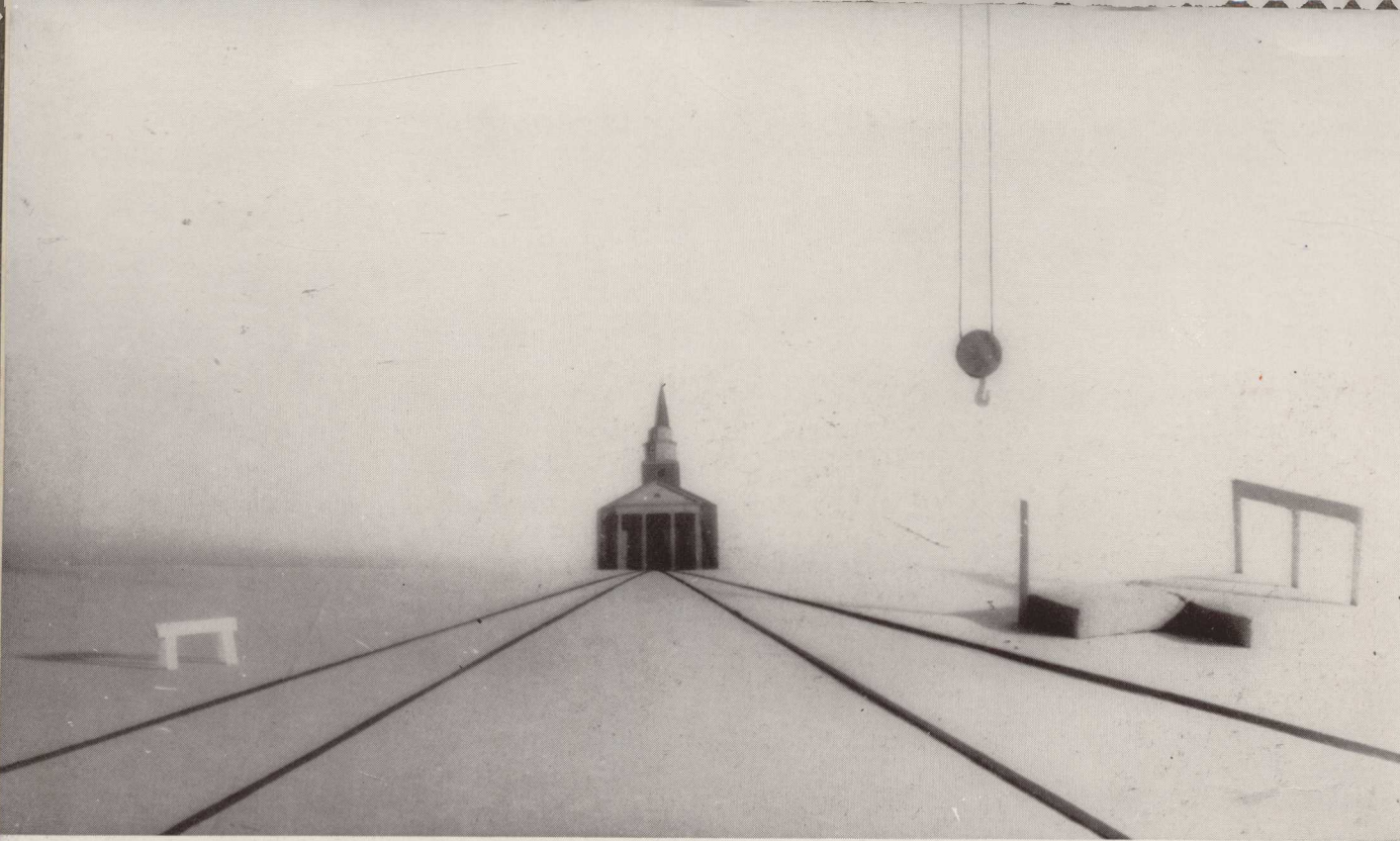
the progress that is being made at

**Young Harris College**

Young Harris, Georgia

*We invite you to enter the campus...*





*... and see that a vision has become  
a reality ...*

**Sharp Memorial Church**

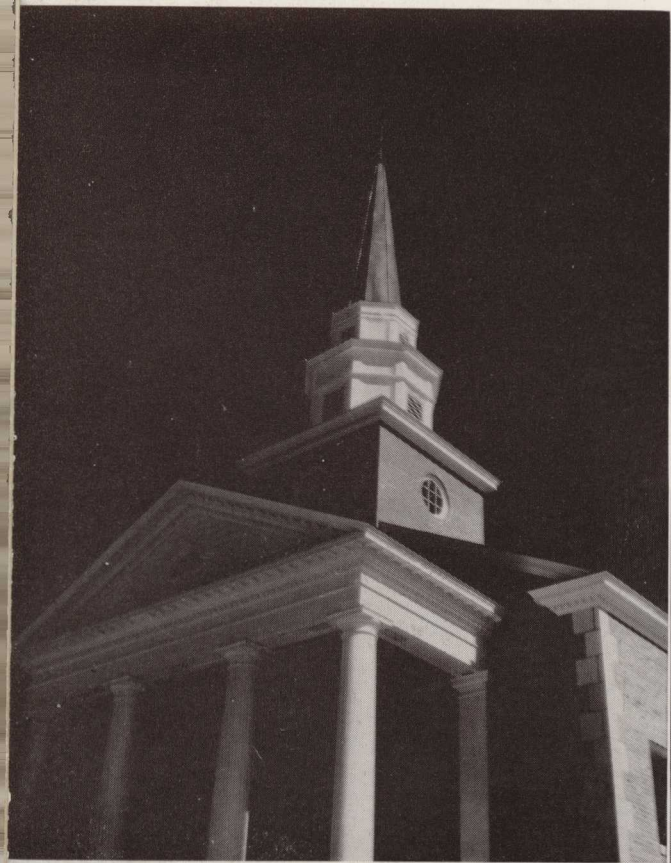
built in memory of

Dr. J. A. Sharp

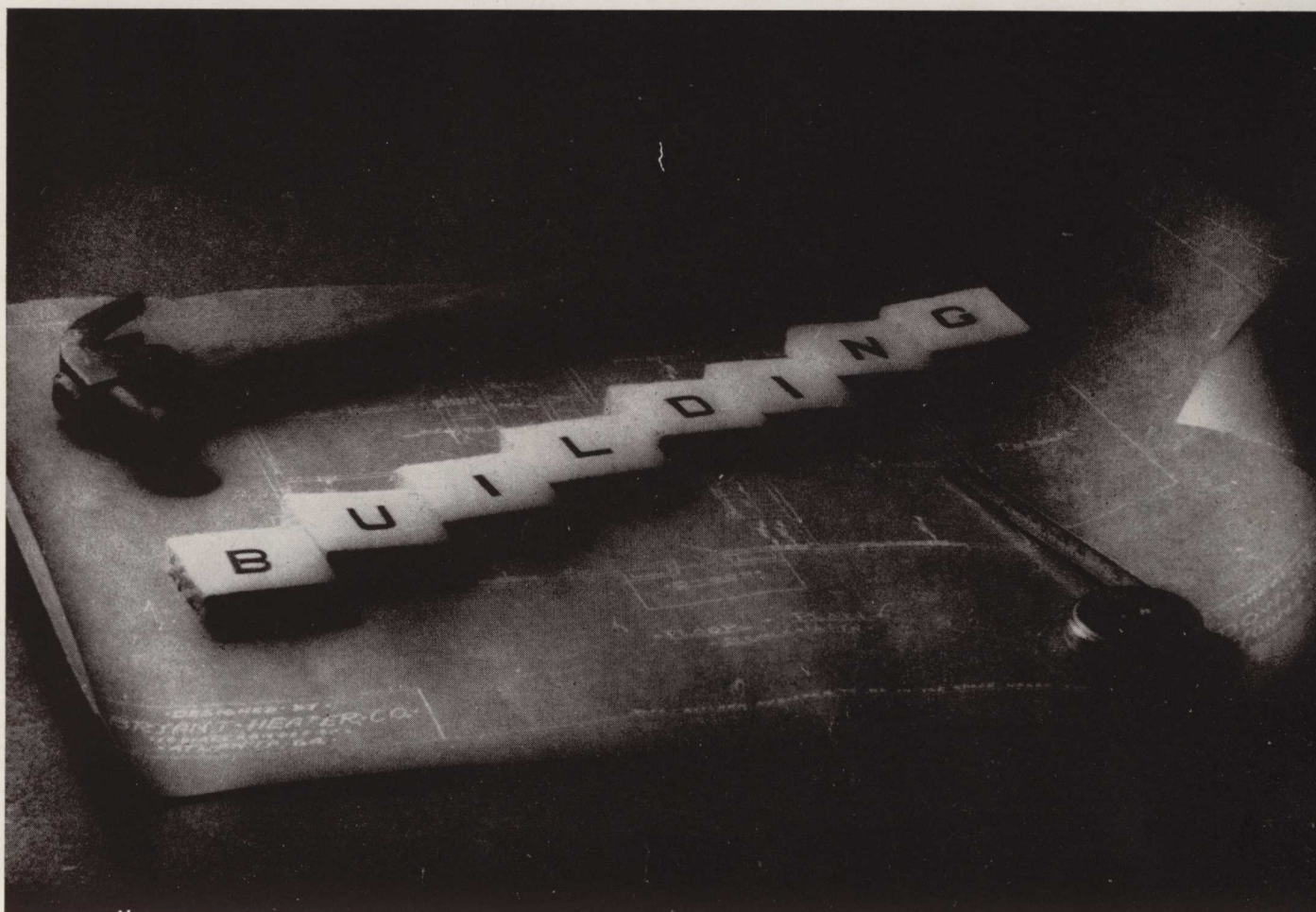
President of Young Harris College

for 25 years

Dedication, May 29, 1949



*... and that those who have visions  
of what Young Harris College  
will be tomorrow are ...*



*... that college and that student body  
today ...*



The Duckworth Libraries  
Young Harris College  
Young Harris, Georgia

41451

# Structurally



*The new laundry.*



*The new \$10,000 parsonage under construction.*

*Improvements to heating system and water system.*



*Above: The new infirmary.*

*Below: The administration building under construction.*



*The Library . . .  
an excellent place to study.*

*At bottom: Sharp Hall, where many classes are held.*

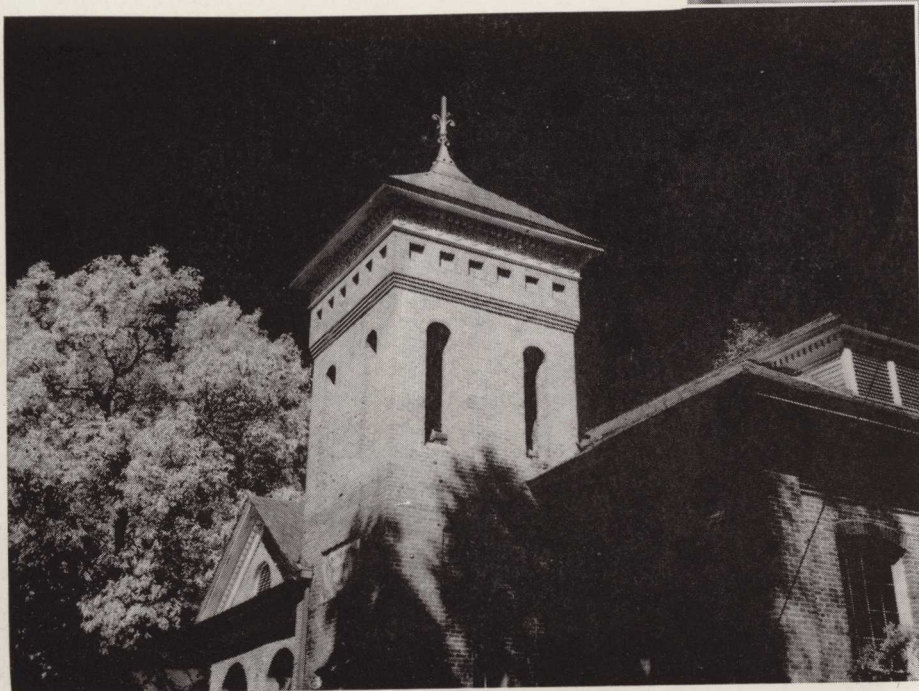


*Mentally*

# *Spiritually*



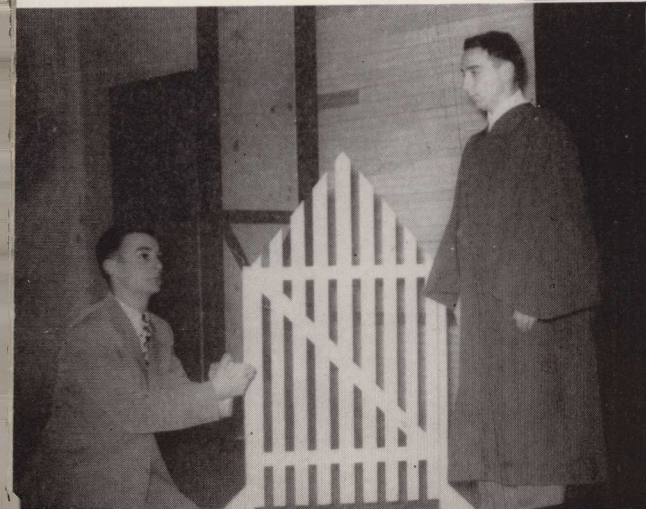
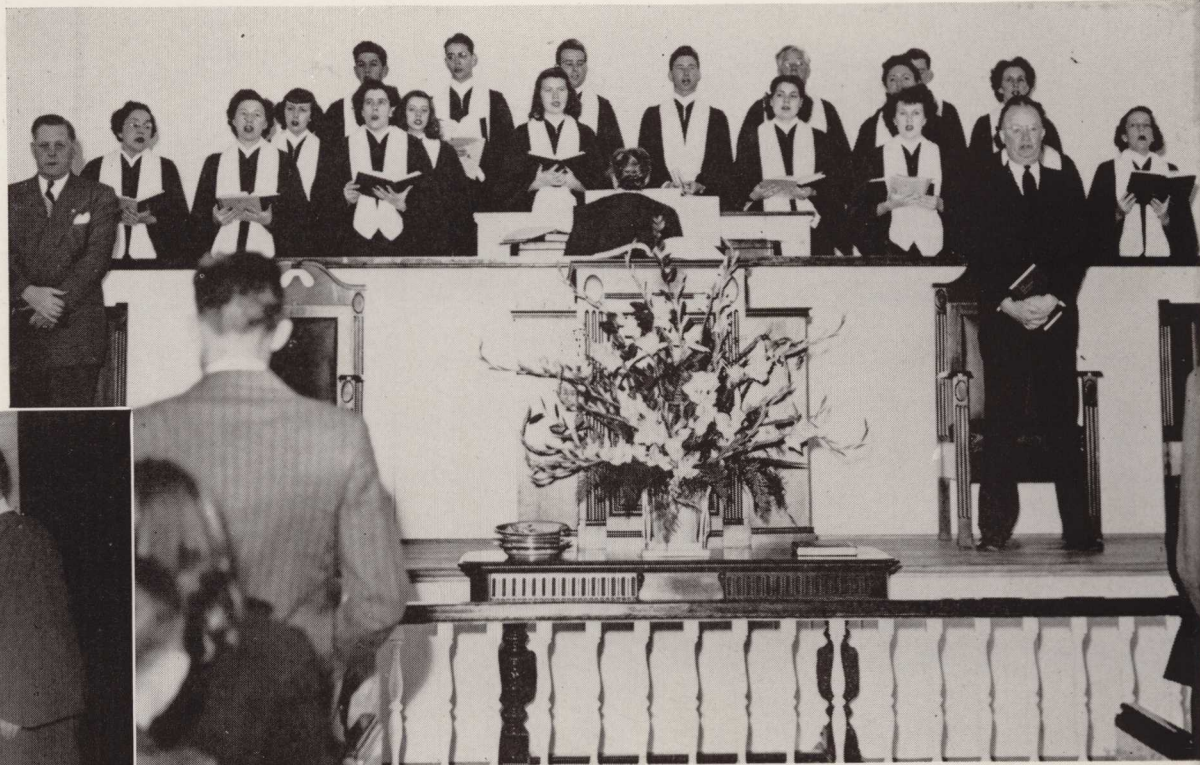
*Above: Student worship in Sharp Memorial Church.*



*Center: The chapel bell calls us to worship.*

*Below: The opening service at Sharp Memorial Church.*

*Methodist Student Fellowship  
presentation of  
"A Certain Just Man"*

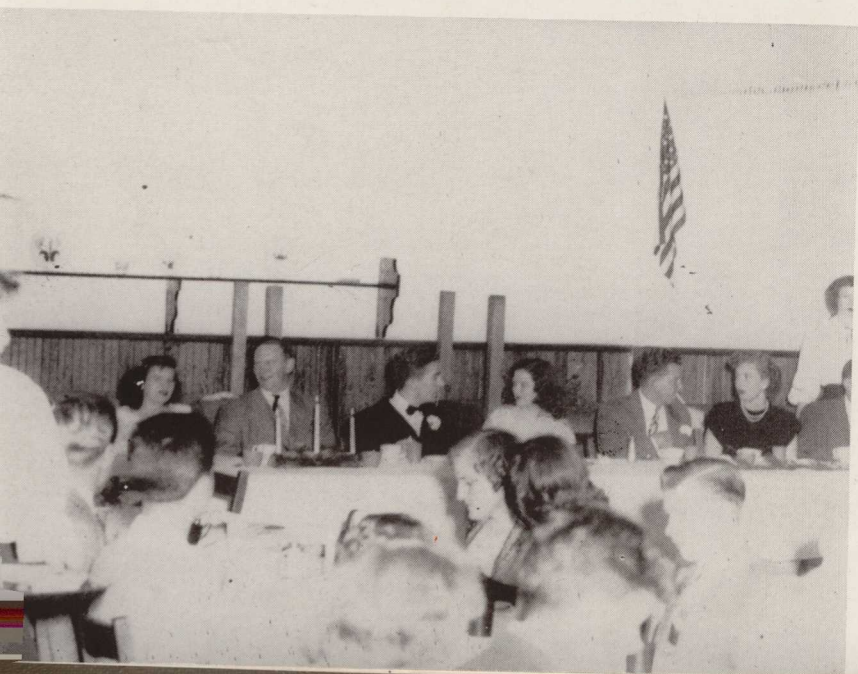


*Right: Reception in Appleby Hall.*

*Center, left: At the Young Harris - Susan B. banquet.*

*Center, right: At the costume party.*

*Below: At the Phi Chi - Phi Delta banquet.*



*Socially*

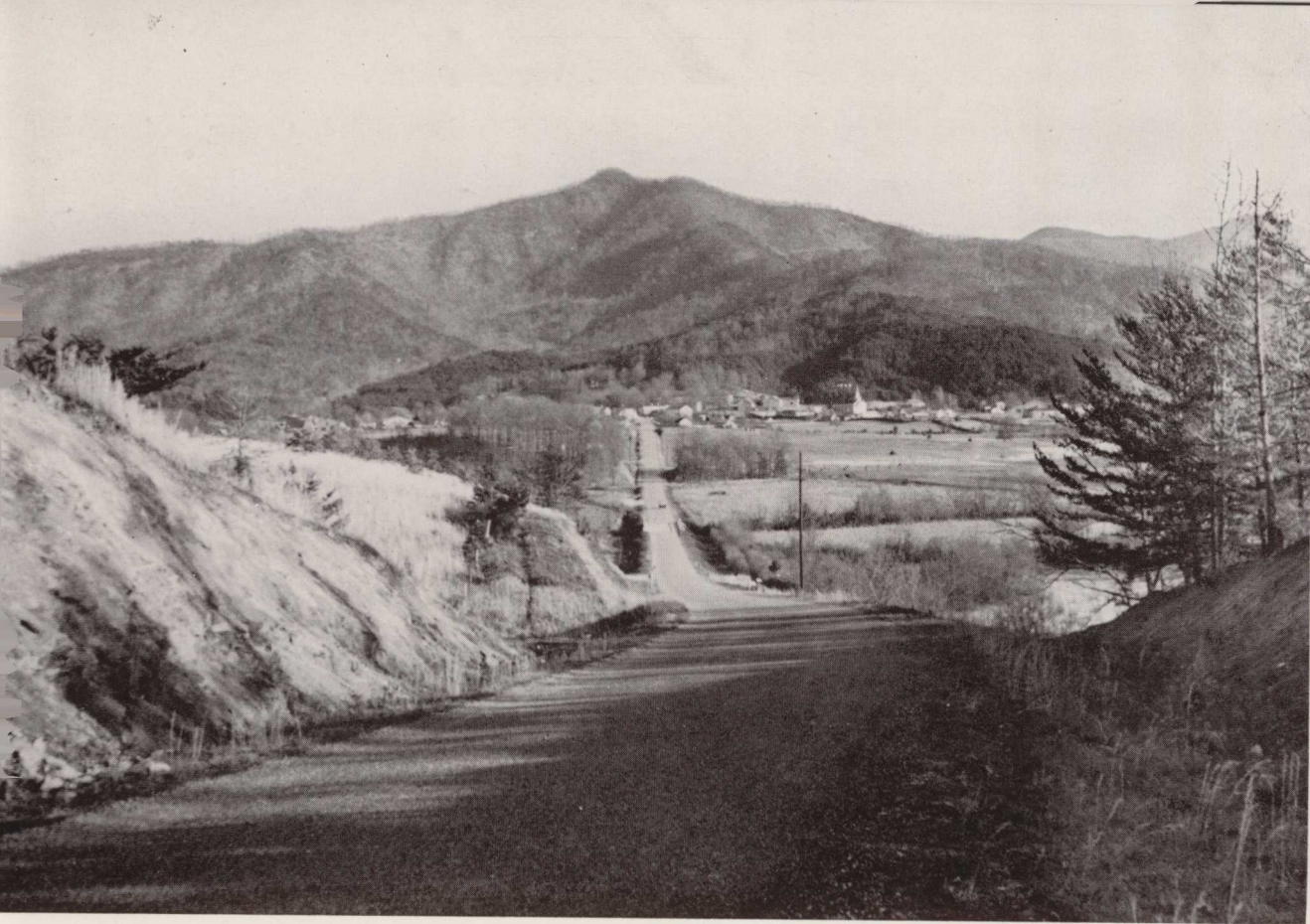
# Physically



Young Harris offers intercollegiate basketball and minor sports and activities, including archery, folk dancing, ping-pong, badminton, tennis, and softball.

*Willis Dobbs Hall—Watch those calories! Say you're gaining, girls?*





*Double  
Knob  
towers  
over  
Young  
Harris*

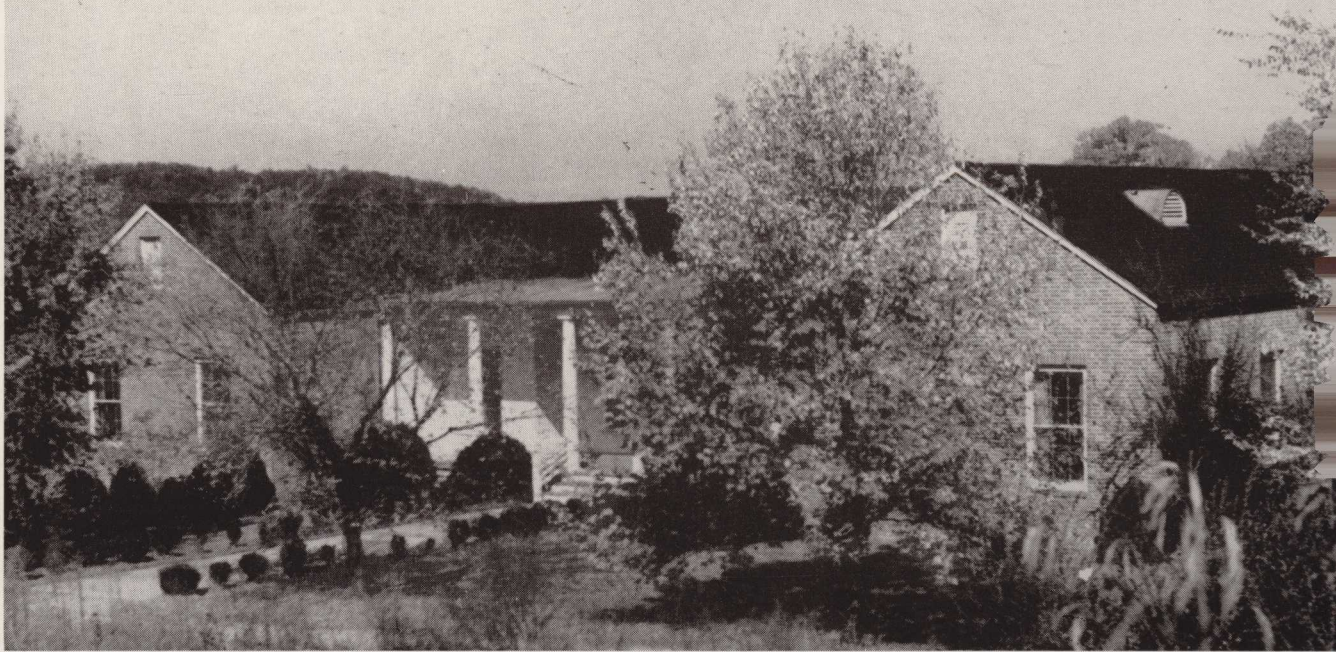
*In Georgia where the mountains blue . . .  
Are pointing toward the sky . . .*

*There stands our Alma Mater dear . . .  
There's where our hearts all lie . . .*



*Susan B. Harris  
Memorial  
Chapel*

*Rich  
Building*



*We're true to thee, dear Y. H. C. . . . .  
Thy fame is our delight . . .*

*We hail thee, Alma Mater dear . . . .  
Thy purple and thy white . . .*

*Reid  
Building*



*Though time may pass  
o'er these dear halls . . .*

*We'll still come  
back to thee . . .*



*Peel Hall*

*Appleby Hall*

*Hamby Hall*

*And still we'll cherish  
memories of*

*Our days at  
Y. H. C.*

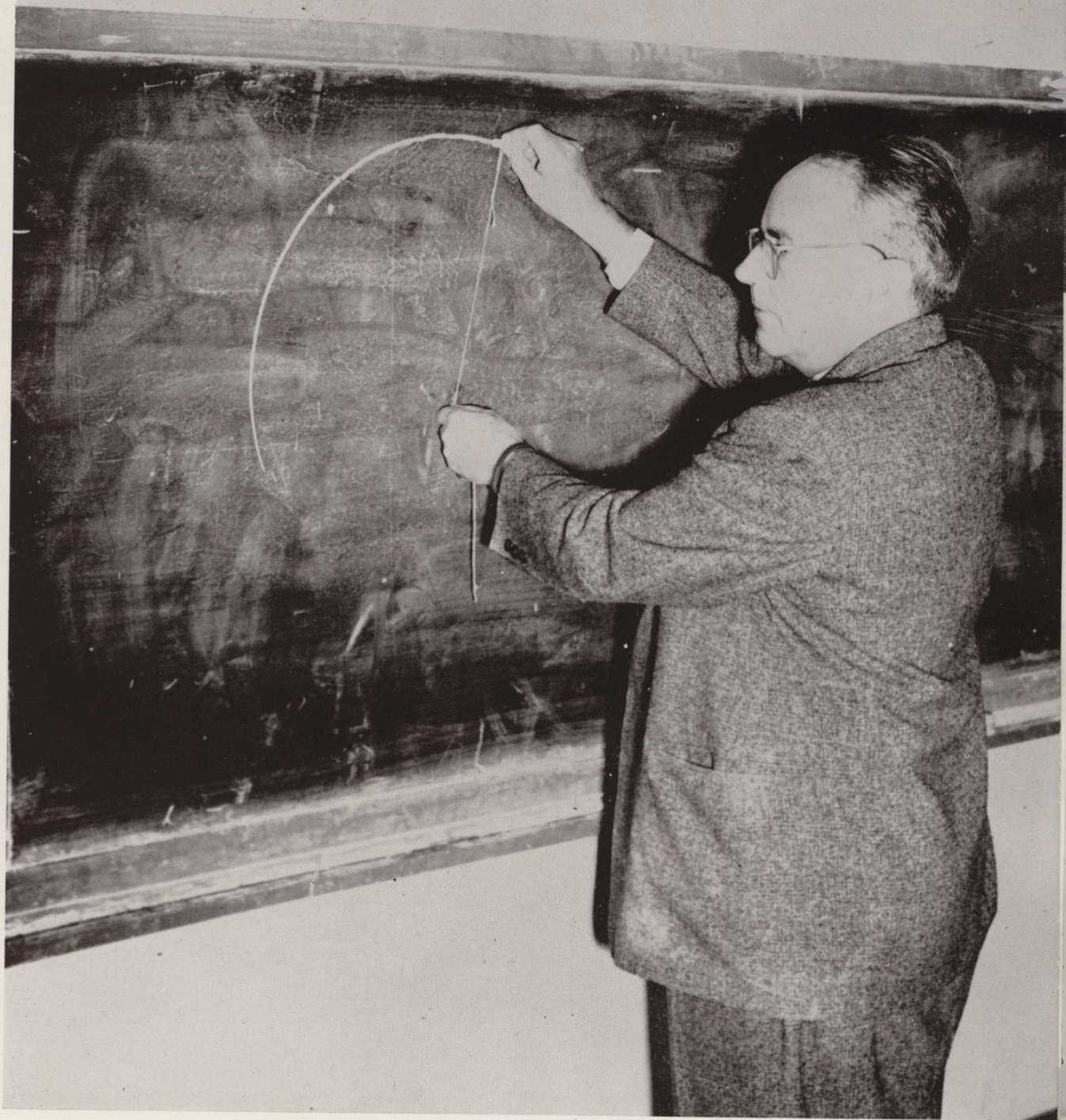




## Dedication

*"The surest way not to fail is to determine to succeed."*

This truth has been the driving force of this yearbook and has strongly characterized the unselfish efforts of Miss Edna Herren, to whom we, the staff, lovingly dedicate this 1949 edition of the ENOTAH.



*Faculty*



WALTER L. DOWNS, A.M.  
*President of the College*

LAWRENCE C. ATKINS, A.B.  
*Registrar*  
Mathematics

MISS MARGARET HART, B.S.  
*Bursar*

STARR MILLER, M.S. in Ed.  
*Administrative Assistant*  
Education





CLAUD HUMPHREYS, M.A.  
Mathematics  
*Director of Men in Peel*

MISS HAZEL GILSTRAP, B.S.  
*Dean of Women*  
Mathematics



SAMP B. TOLAR, M.S.  
Science



MRS. S. B. TOLAR, B.S. in L.S.  
*Librarian*

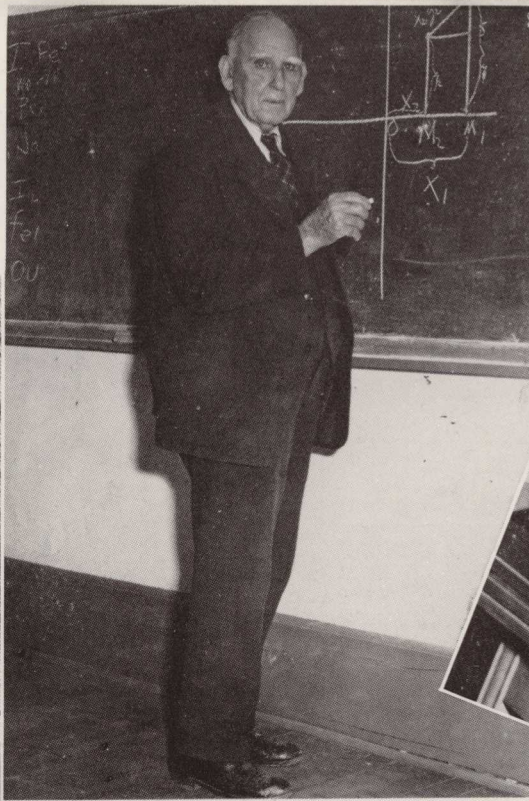
MACALLEN MYERS, B.S. in Ag.  
*Farm Supervisor*

MRS. S. G. MILLER  
*Superintendent of Buildings and  
Grounds*





MISS HILDA McCURDY, A.M.  
Modern Languages



W. S. MANN, A.B.  
Mathematics



MISS EDNA HERREN, M.A.  
English

P. H. McMILLAN, B.S.  
Chemistry and Biology



MRS. MACALLEN MYERS, M.A.  
English



MISS MARTHA NIBLACK, M.A.  
History



Dow KIRKPATRICK, Ph.D.  
Religious Education



Miss IRENE WILLIAMS, M.A.  
Speech and Fine Arts



Mrs. WALTER L. DOWNS, B.M.  
Music



Miss CORNELIA CHAPPELL, B.S.  
Home Economics



LUKE RUSHTON, A.B.  
History  
Coach



Miss BEATRICE AUTRY, A.B.  
Commercial Work





MRS. J. A. SHARP  
Known to the students as  
"Mam-ma!"

DR. W. F. TANNER  
MRS. SALLIE SPENCE  
(Left)

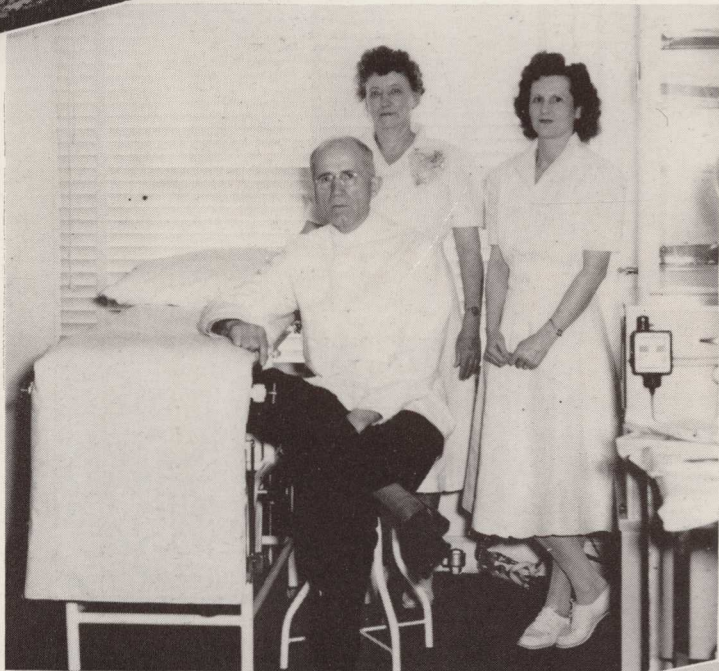
MRS. C. W. WATERS, R.N.  
(Right)  
Staff of the Clinic

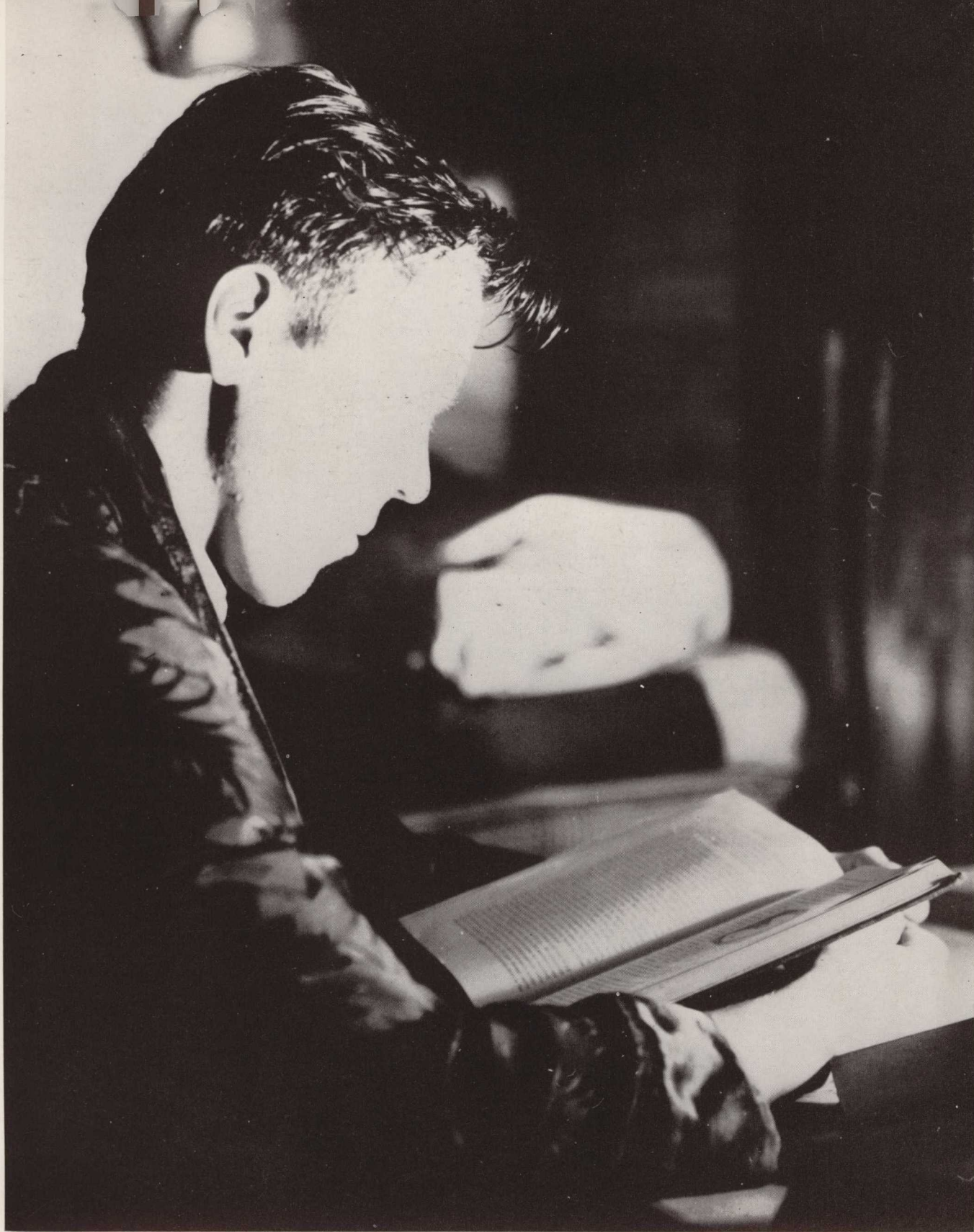
Below: MRS. L. C. ATKINS  
Dining Room Hostess

Right: MRS. MINNIE J. CALDWELL  
MRS. TOM JENKINS  
MRS. MARY HUNT  
Food Preparation Staff



CORNELIA LOWE, M.E.  
ROXANNA AUSTIN, B.S. in L.S.  
Towns-Union Regional Library





# *Classes*



HUGH KENNETH WALL  
Y. H. D. S.  
Winder, Ga.

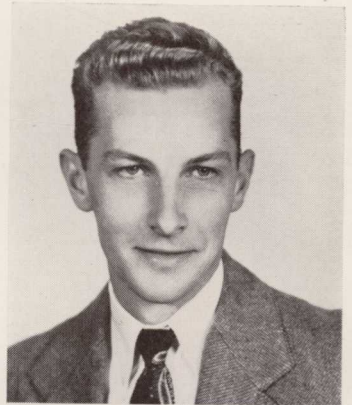
Veterans' Club, Sergeant-at-Arms, Vice-President; Y. H. D. S., Sergeant-at-Arms, President; Senior Class President.

SARA "BOBBIE" SWANSON  
Susan B.  
Young Harris, Ga.

Susan B., Critic, Basketball, Vice-President; Commercial Club, Secretary, President; Dorcas, Reporter; Senior Class Vice-President.

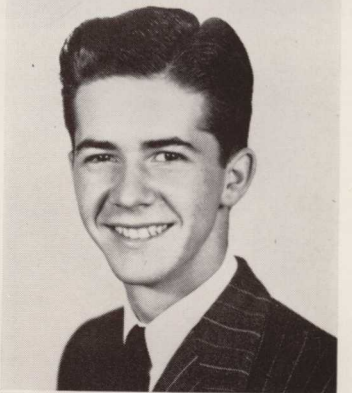
JOHN ARROWOOD  
Phi Chi  
Blairsville, Ga.

Phi Chi, Treasurer; Spat Club, Treasurer; Veterans' Club, Vice-President, President; Student Council; Hamby Hall Council; ENOTAH Staff.

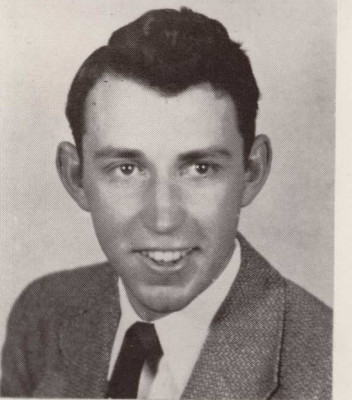


ERNESTO ARTAMENDI  
Phi Chi  
Pinar del Rio, Cuba

"A" Club; Peel Hall Council.

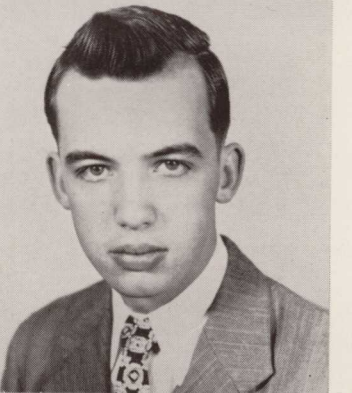


JULIAN ASHE  
Hayesville, N. C.



MAX BARLOW  
Y. H. D. S.  
Cairo, Ga.

F.T.A., President; ENOTAH ECHOES, Editor; Y. H. D. S., Vice-President, Basketball; Ministerial Conference; Commercial Club; I. R. C.; Hamby Hall Council; Student Council.



GERALD BISHOP  
Y. H. D. S.  
Lakeland, Ga.

Y.H.D.S., Treasurer, Clay Medal Speaker; M. S. F. Council; ENOTAH ECHOES, Associate Editor.



# THE SENIOR CLASS

KENNETH WALL  
President

BOBBIE SWANSON  
Vice-President

JACK BRINKLEY  
Secretary-Treasurer



JACK THOMAS BRINKLEY  
Phi Chi  
Bainbridge, Ga.

Phi Chi, Clay Medal Speaker, 1948-49; Varsity Basketball; Student Council, Sergeant-at-Arms.



HERBERT BOWMAN  
Y. H. D. S.  
Gainesville, Ga.

Y.H.D.S., Secretary, Vice-President, Basketball; Spat Club; "A" Club, President, Vice-President; F.T.A., Secretary; M.S.F. Council; Student Council; ENOTAH ECHOES.

BETTY BRYSON  
Susan B.  
Young Harris, Ga.

ERNEST WINTON CARLOCK  
Y. H. D. S.  
Porterdale, Ga.

I. R. C.; Ministerial Conference; Y. H. D. S., Football, Basketball; M. S. F.

BERNARD M. CHANDLER  
"Moe"  
Y. H. D. S.  
Atlanta, Ga.

Y. H. D. S., Solicitor General, Basketball, Softball; "A" Club; ENOTAH ECHOES.

JUANITA DANIEL  
Atlanta, Ga.

Ministerial Conference; M. S. F., President; Young Ladies' Circle; Student Council, Secretary.

GERALD DAVIS  
Y. H. D. S.  
Atlanta, Ga.

Y. H. D. S., Secretary; Ministerial Conference, Secretary; ENOTAH Staff.

JOHN T. DORRIS  
Phi Chi  
Douglasville, Ga.

Phi Chi, President, Vice-President, Champion Debater, Critic, Football, Softball; Student Council, Solicitor General; "A" Club, Sergeant - at - Arms; Spat Club, President.

ANN FLEETWOOD  
Phi Delta  
Atlanta, Ga.

Phi Delta, Vice-President, Basketball; Young Ladies' Circle, Vice-President; "A" Club; Ministerial Conference; M. S. F. Council; ENOTAH ECHOES; ENOTAH Staff, Editor; Dorcas, Corresponding Secretary; Student Council.

SUMTER LA VAUGHN FOSTER  
Y. H. D. S.  
Hawkinsville, Ga.

Ministerial Conference, Bishop; Y. H. D. S., Parliamentarian; I. R. C., President; M. S. F., Vice-President.

BETTY GALLOWAY  
Susan B.  
Young Harris, Ga.

Alpha Psi.

RAYMOND GARNER  
Y. H. D. S.  
Cumming, Ga.

Y.H.D.S., Solicitor General; Hamby Hall Council.

MILDRED GIBSON  
Warne, N. C.

Daniel  
Foster

Davis  
Galloway

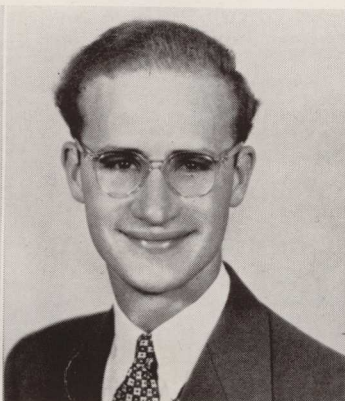
Dorris  
Garner

Fleetwood  
Gibson



Bowman  
Carlock

Bryson  
Chandler



YOUNG HARRIS COLLEGE LIBRARY  
Young Harris, Ga.

HENRY GREER  
*Phi Chi*  
Columbus, Ga.

Phi Chi, Clay Medal Speaker; Choir; Student Council; Spat Club.

CLIVE R. HALLMAN  
*Phi Chi*  
Douglasville, Ga.

Phi Chi, Treasurer, Vice-President; Music Club, Secretary; Student Council; Spat Club, Secretary.

HELEN HAMMETT  
*Phi Delta*  
Santa Rosa, Tex.

Phi Delta, Secretary; Young Ladies' Circle; Dorcas, Secretary, Vice-President; Student Council; Commercial Club, Secretary, Vice-President; ENOTAH ECHOES Staff.

BERNARD HANKINSON  
*Phi Chi*  
Girard, Ga.

Veterans' Club, Secretary; Spat Club; "A" Club; ENOTAH Staff.

DELORES LUCILLE HENDLEY  
*Susan B.*  
Vienna, Ga.

Susan B., Reporter; Young Ladies' Circle; ENOTAH Staff; Schubert Music Club.

JOHN EDWARD HURN  
*Phi Chi*  
Highlands City, Fla.

Phi Chi, President; Veterans' Club, President; Spat Club, President; ENOTAH Staff.

FRANCES JACKSON  
*Phi Delta*  
Norcross, Ga.

Phi Delta, Secretary; Dorcas, Chaplain; Student Council; Young Ladies' Circle; Schubert Music Club.

JAMES JOHNSON  
Hayesville, N. C.

SARA AGNES KELLY  
*Susan B.*  
Rabun Gap, Ga.

Susan B., Chaplain; Young Ladies' Circle, President; Alpha Psi.

JIMMIE REE McNEAL  
*Phi Delta*  
Gainesville, Ga.

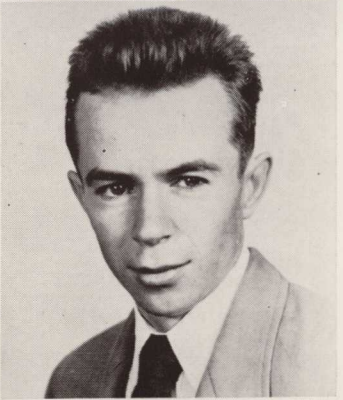
Phi Delta, Secretary, Cheerleader; Young Ladies' Circle; Student Council; ENOTAH Staff; F. T. A., Vice-President; I. R. C., Treasurer; "A" Club; Commercial Club.

JESSE BRITTAIN McNEIL  
*Y. H. D. S.*  
Roswell, Ga.

Y. H. D. S., Treasurer, Chaplain, Clay Medal Speaker; Ministerial Conference; Student Council.

WILLIAM MALONE  
*Phi Chi*  
Monticello, Ga.

Phi Chi, Secretary; "A" Club.



Greer  
Hammett

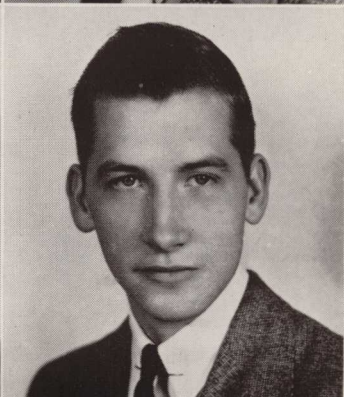
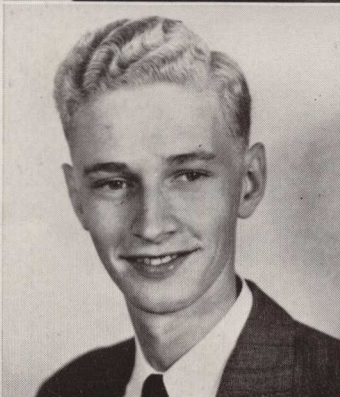
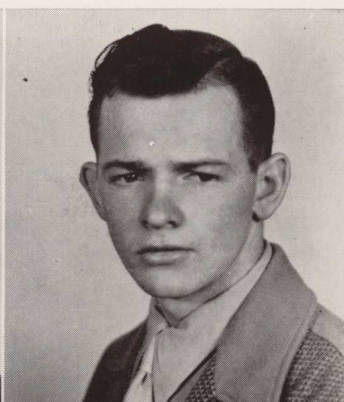
Hallman  
Hankinson

Hendley  
Kelly

Hurn  
McNeal

Jackson  
McNeil

Johnson  
Malone





Martin, H.  
Martin, M.

Martin, M. J.  
Mealor

HEYWARD MARTIN  
*Phi Chi*  
Gainesville, Ga.

Spat Club; Varsity Basketball.

MATTIE JANE MARTIN  
*Phi Delta*  
Gainesville, Ga.

Phi Delta, Sergeant-at-Arms, Basketball; Dorcas Club; Young Ladies' Circle.

MILDRED MARTIN  
Gainesville, Ga.

MARVIN COLQUITT MEALOR  
*Y. H. D. S.*  
Athens, Ga.

Veterans' Club; ENOTAH ECHOES, Business Manager.

WESLEY MORRISON  
*Phi Chi*  
Lumpkin, Ga.

Phi Chi, Sergeant-at-Arms, Football; Spat Club; Varsity Basketball.

DOYLE NICHOLS  
Hiawassee, Ga.

Veterans' Club.

WILLIAM H. PAQUIN  
*Phi Chi*  
Augusta, Ga.

Phi Chi, President, Chaplain, Washington Day Speaker; Ministerial Conference; I. R. C.; Veterans' Club, Reporter, Chaplain; Student Council, Sergeant-at-Arms.

BETTY JANE PARIS  
*Phi Delta*  
Dallas, Ga.

Phi Delta, Vice-President, Basketball; Dorcas Club, President; Young Ladies' Circle, President; Student Council, President; ENOTAH Staff; Ministerial Conference; Choir.

JEWEL PAYNE  
*Y. H. D. S.*  
Blairsville, Ga.

ENOTAH ECHOES Staff; I. R. C.

OLA KAY PLATT  
Young Harris, Ga.

WILLIAM N. REID  
*Y. H. D. S.*  
Juno, Ga.

ENOTAH ECHOES Staff, Editor; Y. H. D. S., Solicitor General, Clay Medal Speaker, Champion Debater; I. R. C., President; Ministerial Conference.

HOYT ROBINSON  
*Phi Chi*  
Gainesville, Ga.

"A" Club; Commercial Club; Varsity Basketball.

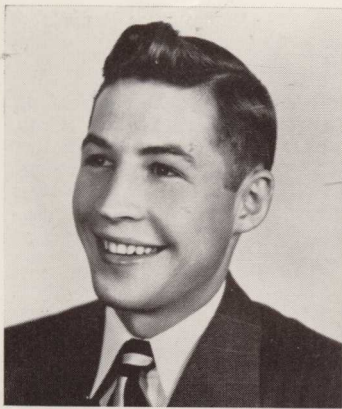
Morrison  
Payne

Nichols  
Platt

Paquin  
Reid

Paris  
Robinson





Shurbutt

CHARLES LEWIS SHURBUTT  
*Y. H. D. S.*  
Ben Hill, Ga.

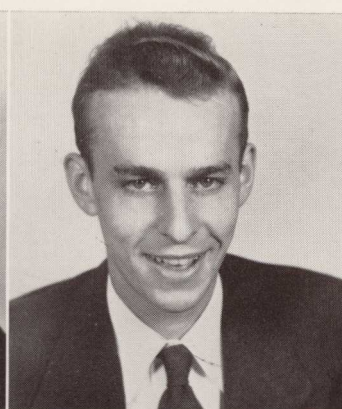
Ministerial Conference; Junior Methodist Youth Fellowship Counselor; Student Pastor; Choir.



Spencer

JULIA SPENCER  
*Phi Delta*  
Jackson, Ga.

Phi Delta, Chaplain; Young Ladies' Circle; Ministerial Conference; F. T. A.



Stone

DANIEL GREENE STONE  
*Y. H. D. S.*  
Fairburn, Ga.

Student Council; Supreme Court; Ministerial Conference, District Superintendent; ENOTAH ECHOES, News Staff; ENOTAH, Business Manager; I. R. C., President.



BETTY TEAGUE  
Hiawassee, Ga.

DAVE LEROY TROUGHTON  
*Y. H. D. S.*  
Savannah, Ga.

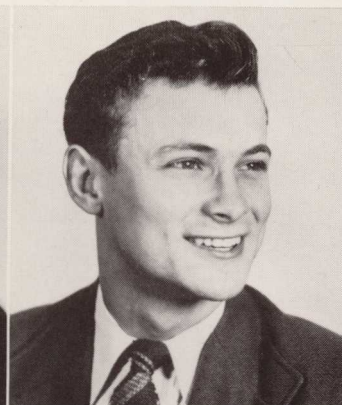
Y. H. D. S., President, Vice-President, Football, Softball; Varsity Basketball; Choir; I. R. C.; Ministerial Conference.

CHARLES VOYLES  
*Y. D. H. S.*  
Blairsville, Ga.

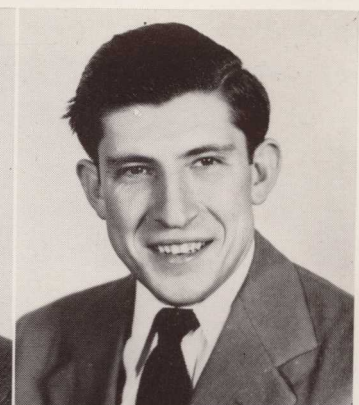
Veterans' Club, Sergeant-at-Arms.



Teague



Troughton



Voyles

KATHERINE WALKER  
*Susan B.*  
Walland, Tenn.

Susan B., Secretary; Young Ladies' Circle; Alpha Psi; Schubert Music Club, President; Choir.

ROBERT A. WALLER  
*Y. H. D. S.*  
Sparta, Ga.

"A" Club; Y. H. D. S., Football, Basketball; Varsity Basketball.

THOMAS GERALD WILLIAMS  
*Y. H. D. S.*  
Lake City, Fla.

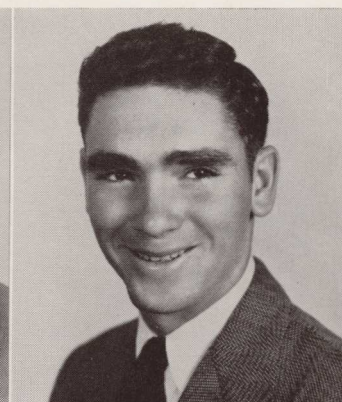
Choir; I. R. C.; Methodist Student Fellowship Council; Y. H. D. S., Co - Captain Football, Basketball, Chaplain; Ministerial Conference.



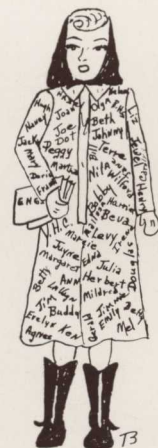
Walker



Waller



Williams





Right:

JACK WILLOUGHBY  
President  
*Y. H. D. S.*  
Union Point, Ga.



GUY SHARPE  
Vice-President  
*Phi Chi*  
Atlanta, Ga.

LOUELLEN MCDADE  
Secretary and Treasurer  
*Phi Delta*  
Eatonton, Ga.



Left:

BOBBIE ADAMS  
*Susan B.*  
Lake Worth, Fla.



# THE FRESHMAN CLASS



GLORIA ANDERSON  
*Phi Delta*  
Glenwood, Ga.

MARY FRANCES AXLEY  
*Susan B.*  
Murphy, N. C.



JUANITA BARNARD  
*Susan B.*  
Warne, N. C.



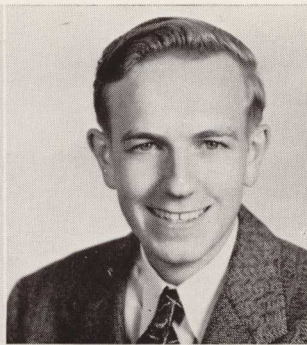
TERRE BLAIR  
*Susan B.*  
Rome, Ga.

FRANCES BOLDING  
*Phi Delta*  
Atlanta, Ga.

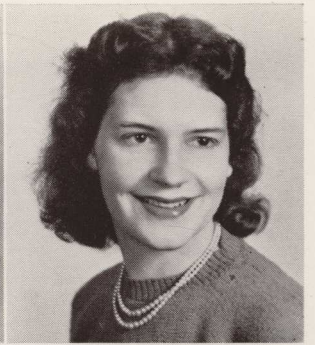




Brown



Bryant  
Carson



ESTELLE BROWN  
Warne, N. C.

WEYMAN BRYANT  
Y. H. D. S.  
Atlanta, Ga.

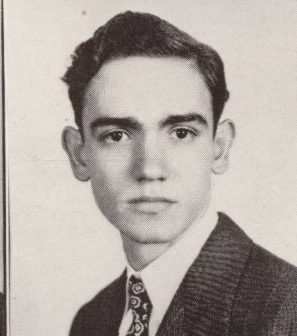
BILL BRYSON  
Phi Chi  
Young Harris, Ga.

MARY PARKS BUGG  
Susan B.  
Rentz, Ga.

TOMMIE BURCH  
Hayesville, N. C.



Bryson  
Carter, N.  
Childres



PAUL CARSON  
Phi Chi  
Atlanta, Ga.

NANCY CARTER  
Susan B.  
Young Harris, Ga.

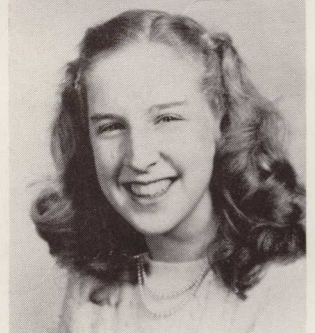
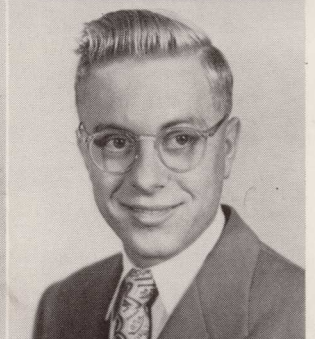
VIRGINIA CARTER  
Susan B.  
Bishop, Ga.

DORIS CASH  
Phi Delta  
Mountville, Ga.

WILLIAM CHILDRES  
Y. H. D. S.  
Butler, Ga.



Bugg  
Carter, V.  
Cook, B.  
Dotson



BEVERLY COOK  
LaGrange, Ga.

RAYMOND COOK  
LaGrange, Ga.

SARA SUE DOTSON  
Phi Delta  
Clayton, Ga.

EUGENE DUNN  
Y. H. D. S.  
Athens, Ga.

APRIL EYNON  
Phi Delta  
Kansas City, Mo.

Burch  
Cash  
Cook, R.  
Dunn  
Eynon



MILLEDGE FAIR  
Blairsville, Ga.

HENRY FLOWERS  
*Phi Chi*  
Blythe, Ga.

BILL FOX  
*Y. H. D. S.*  
Blairsville, Ga.

MALISSA GILES  
*Susan B.*  
Sandersville, Ga.

JOHN GREGORY  
*Phi Chi*  
Dalton, Ga.

Fox  
Gregory  
Hayes  
Jones, M.

NEIL HAMBY  
Blairsville, Ga.

ANN HARRIS  
*Phi Delta*  
Griffin, Ga.

LINDY HAYES  
*Y. H. D. S.*  
Morganton, Ga.

WILFORD HINELY  
Marlow, Ga.

GERTIE MAE HOLMES  
*Susan B.*  
Hiawassee, Ga.

Hamby  
Hinely  
Jones, M. W.

Holmes  
Jones, R. A.

LEE JONES  
*Phi Chi*  
Lumber City, Ga.

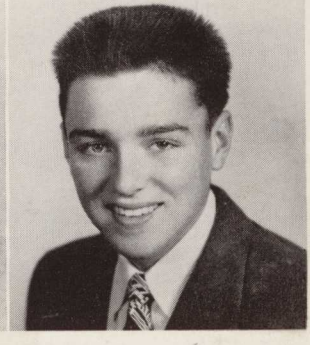
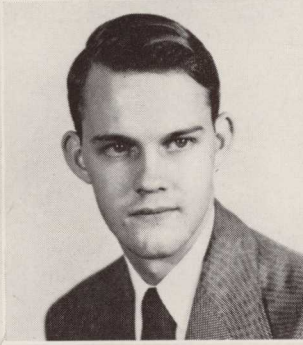
MARYLYN JONES  
Hayesville, N. C.

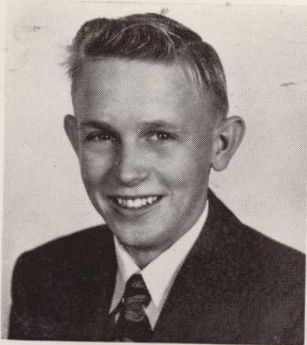
MARY WILLMA JONES  
Hayesville, N. C.

RUTH ANN JONES  
*Susan B.*  
Mineral Bluff, Ga.

BOB KERR  
*Y. H. D. S.*  
College Park, Ga.

Kerr

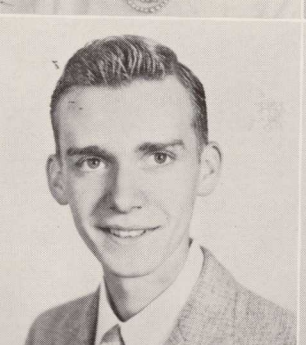




Killian



King  
Lovett



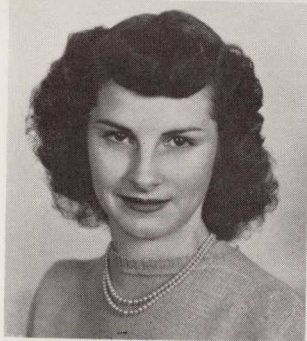
CHARLES LEON KILLIAN  
*Phi Chi*  
Blairsville, Ga.

SARA KING  
*Susan B.*  
Murphy, N. C.

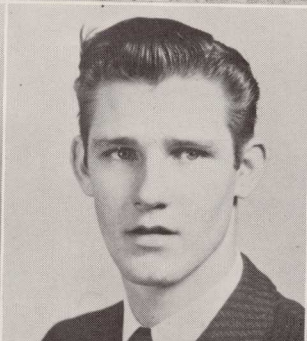
FRANCES KNIGHT  
*Phi Delta*  
Flowery Branch, Ga.

ELIZABETH LEDFORD  
*Susan B.*  
Nichols, Ga.

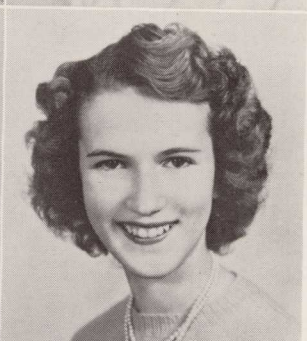
OLGA LEON  
*Phi Delta*  
Santa Clara, Cuba



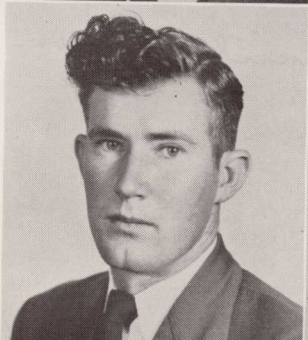
Knight  
McKeehan  
Mease



Ledford  
McMullan  
Moore  
Oakley



H. O. MOORE  
*Phi Chi*  
Elberton, Ga.



KANSIE LEE NEWTON  
*Susan B.*  
Dawsonville, Ga.



JAMES OAKLEY  
Blairsville, Ga.



DOROTHY PALMER  
*Susan B.*  
Murphy, N. C.

BETTY JEAN LOVETT  
*Susan B.*  
Hilltonia, Ga.

MELVIN MCKEEHAN  
Rocky Face, Ga.

TOMMY McMULLAN  
*Phi Chi*  
Jefferson, Ga.

NAOMI MATHEWS  
*Susan B.*  
Winder, Ga.

PANSY MEASE  
Hayesville, N. C.

Leon  
Mathews  
Newton  
Palmer  
Passmore

JAMES PASSMORE  
*Phi Chi*  
Macon, Ga.



BEVA ANN PHILLIPS  
Tampa, Fla.

PAT REDFEARN  
*Phi Delta*  
Wewahitchka, Fla.

WILLIAM RITCHIE  
*Phi Chi*  
Bellerose, N. Y.

JEAN RIDGEWAY  
*Phi Delta*  
Homer, Ga.

DOROTHY SAMPSON  
Young Harris, Ga.

Ridgeway  
Sampson  
Sherwood  
Snow

DOUGLAS SASSER  
*Y. H. D. S.*  
Millen, Ga.

JOYCE SATTERFIELD  
*Phi Delta*  
Tignall, Ga.

F. L. SHERWOOD  
*Y. H. D. S.*  
McDonough, Ga.

THOMAS SMARTT  
West Point, Ga.

BILL SMITH  
Fort Gaines, Ga.

MELVINA SMITH  
Athens, Ga.

BILL SNOW  
*Y. H. D. S.*  
Winder, Ga.

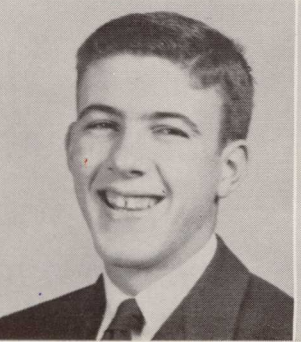
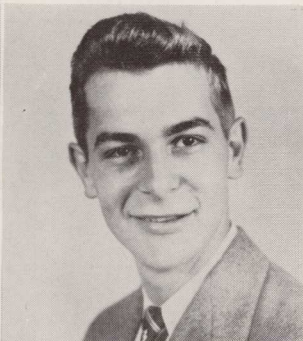
SAM SORRELLS  
*Phi Chi*  
Fayetteville, Ga.

SANFORD SPEIR  
*Phi Chi*  
Dawson, Ga.

GERALDINE SPIVA  
*Phi Delta*  
Young Harris, Ga.

Smith, B.  
Speir

Spiva



ROBERT STANLEY  
Anniston, Ala.

BETTY JEAN STYLES  
*Susan B.*  
Juno, Ga.

FRANK SUMMEROUR  
*Y. H. D. S.*  
Gainesville, Ga.

Stanley  
Styles  
Swain  
Walker  
Westbrook, E.

FRANK SWAIN  
Hayesville, N. C.

MARION TURNER  
*Phi Delta*  
Atlanta, Ga.

JANE VEAL  
*Susan B.*  
Sandersville, Ga.

BOBBIE WALKER  
*Susan B.*  
Walland, Tenn.

CHARLES WARWICK  
*Y. H. D. S.*  
Monroe, Ga.

Summerour  
Turner  
Warwick  
Westbrook, L.

NANCY WEEKS  
*Susan B.*  
Ellijay, Ga.

JACK WELDON  
*Y. H. D. S.*  
Monroe, Ga.



EVELYN WESTBROOK  
*Susan B.*  
Gainesville, Ga.

LETTIE LEE WESTBROOK  
*Susan B.*  
Gainesville, Ga.

MELVIN WIMPY  
*Y. H. D. S.*  
Ringgold, Ga.

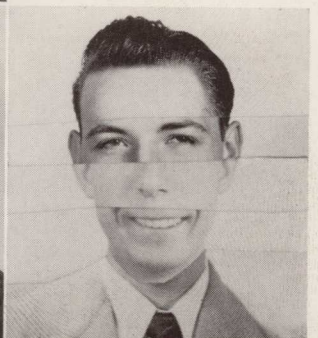
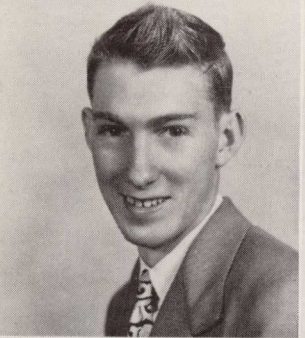
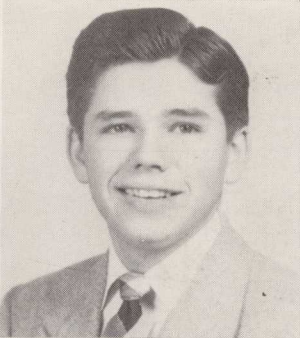
THEODORE WOOD  
*Y. H. D. S.*  
Flowery Branch, Ga.

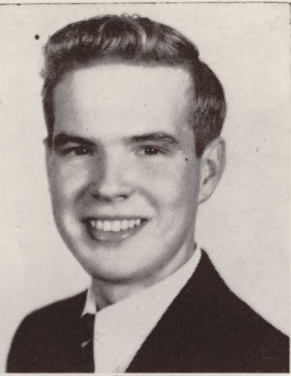
PHILIP SPACE  
*Young Chi*  
Uguessit, Ga.

Veal  
Weeks  
Wimpy

Weldon  
Wood

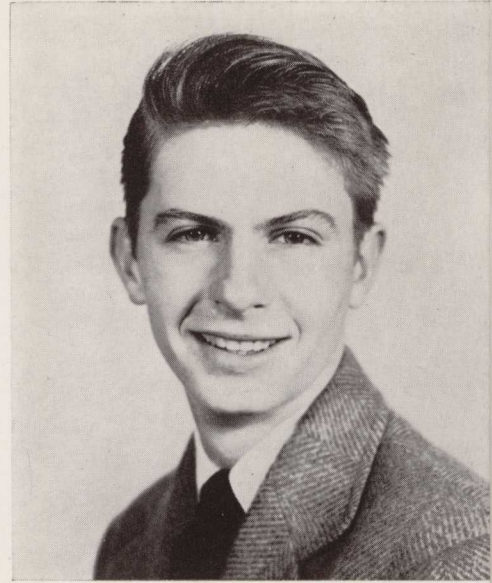
Space





ZELL MILLER  
*Phi Chi*  
Young Harris, Ga.

Phi Chi, Washington Day Speaker, Champion Debater, Solicitor General, Sentinel, Football, Softball, Basketball; "A" Club; ENOTAH ECHOES Staff; ENOTAH Staff; Spat Club; Senior Class President.



EMILY McAFEE  
*Phi Delta*  
Atlanta, Ga.

Dorcas Club; "A" Club, Secretary; Young Ladies' Circle; ENOTAH Staff; Student Council; Schubert Music Club; Phi Delta, President, Basketball; Senior Class Vice-President.



CAREY TEEN NIBLACK  
*Phi Delta*  
Fort White, Fla.

Phi Delta, Cheerleader; Senior Class Secretary and Treasurer.



JAMES CORBIN AVARY, JR.  
*Phi Chi*  
Atlanta, Ga.

Phi Chi, Chaplain; ENOTAH Advertising Manager.



JOYCE BATEMAN  
*Phi Delta*  
Macon, Ga.

Phi Delta; Dorcas; Commercial Club.



RAMOS MANUEL CARTA  
*Y. H. D. S.*  
Santa Clara, Cuba

Phi Chi, Librarian, Washington Day Speaker, Football, Basketball, Softball, Sentinel.



# ACADEMY SENIORS

ZELL MILLER  
President

EMILY McAFEE  
Vice-President

CAREY TEEN NIBLACK  
Secretary and Treasurer



TOMMY CHAPMAN  
*Y. H. D. S.*  
 Jacksonville, Fla.

"A" Club; ENOTAH ECHOES,  
 Sports Editor.

BRYAN CRAFT  
*Y. H. D. S.*  
 Decatur, Ga.

"A" Club.

WALLACE EVANS  
*Y. H. D. S.*  
 Holguin, Cuba

Y. H. D. S., Washington Day  
 Speaker, Clay Medal Speaker.

CHARLES W. FRANCIS  
*Phi Chi*  
 Atlanta, Ga.

Phi Chi Sentinel, Football,  
 Softball, Basketball; "A" Club.

RUTH GAIL HARTLEY  
*Phi Delta*  
 Jacksonville, Fla.

Phi Delta, Cheerleader, Bas-  
 ketball; ENOTAH ECHOES;  
 Young Ladies' Circle; "A"  
 Club; Varsity Cheerleader.

VICKY HIGSMITH  
*Phi Delta*  
 Clayton, Ga.

Phi Delta, Cheerleader; I.R.C.;  
 ENOTAH ECHOES Staff.

WILLIAM RICHARD KIKER  
*Phi Chi*  
 Atlanta, Ga.

Veterans' Club.

RAUL AUGUSTO LUGIOYO  
*Y. H. D. S.*  
 Santa Clara, Cuba

MARGARET McLENDON  
*Phi Delta*  
 Dawson, Ga.

Phi Delta, Cheerleader, Basket-  
 ball, Softball.

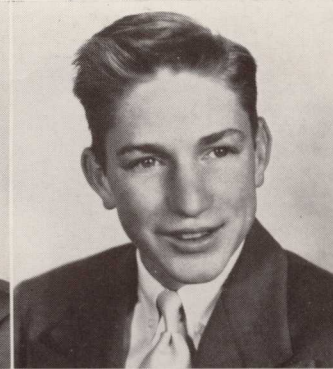
JOCELYN MARTIN  
*Phi Delta*  
 Live Oak, Fla.

Phi Delta, Sergeant-at-Arms;  
 Dorcas, Secretary; Student  
 Council; Young Ladies' Circle.

KENNETH MILLICAN  
*Y. H. D. S.*  
 Summerville, Ga.

WILEY NOLAND  
*Phi Chi*  
 Ben Hill, Ga.

Phi Chi, Washington Day  
 Speaker, Reporter, Football;  
 Veterans' Club, Vice-President,  
 Reporter; Spat Club.



Chapman  
 Evans

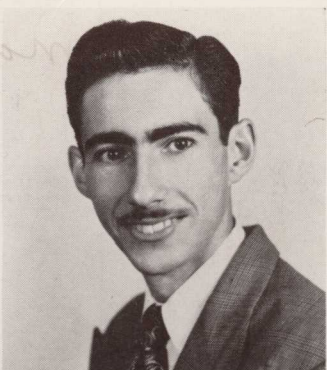
Craft  
 Francis

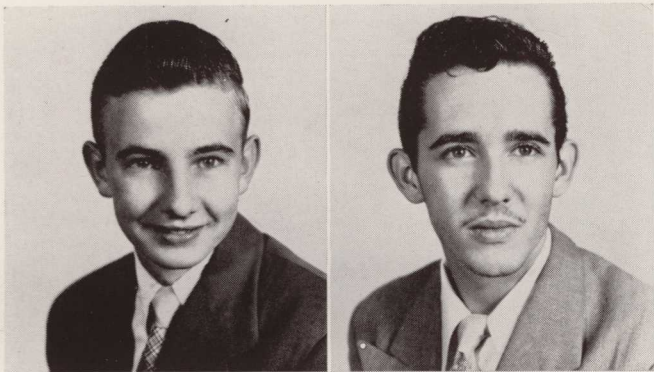
Hartley  
 McLendon

Highsmith  
 Martin

Kiker  
 Millican

Lugioyo  
 Noland





EARL NUNN  
Y. H. D. S.  
Bostwick, Ga.

GENEVA SMITH  
Phi Delta  
Thomaston, Ga.

Dorcas; Young Ladies' Circle;  
I.R.C.; Ministerial Conference;  
Commercial Club; ENOTAH  
ECHOES; M.S.F. Council.

MANUEL DOMINGO ORELLAS  
Y. H. D. S.  
Havana, Cuba

REGINA SMITH  
Phi Delta  
Unadilla, Ga.

ENOTAH ECHOES Staff, Art;  
Young Ladies' Circle.



FRANCES PERKINS  
Phi Delta  
Newington, Ga.

DOLORES SMITHSON  
Susan B.  
Atlanta, Ga.

Susan B., Cheerleader, Vice-  
President; Varsity Cheerleader;  
ENOTAH ECHOES; Young La-  
dies' Circle; Alpha Psi; I.R.C.

WILLIAM HENRY PHILLIPS  
Phi Chi  
Commerce, Ga.  
Commercial Club.

JIMMY SMITHSON  
Phi Chi  
Atlanta, Ga.

Phi Chi, Reporter, Football,  
Softball, Basketball; "A" Club.

Nunn  
Perkins

Orellas  
Phillips

HARRIET RIVERS  
Susan B.  
Lakeland, Ga.

"A" Club; Young Ladies' Circle.

RUTH TERRY  
Phi Delta  
Marietta, Ga.

Varsity Cheerleader; Schubert  
Music Club; "A" Club.

LESLIE SCARBOROUGH  
Y. H. D. S.  
Waynesboro, Ga.  
Y. H. D. S., Secretary.

ROLLA WILLIAMS  
Lawrenceville, Ga.

Rivers  
Smithson, D.

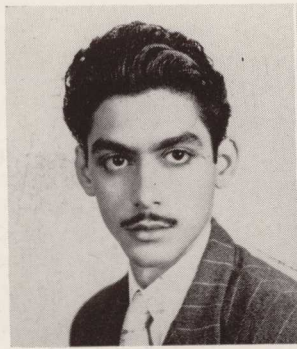
Scarborough  
Smithson, J.

Smith, G.  
Terry

Smith, R.  
Williams



# THE ACADEMY



EUGENIO ARROYO  
*Phi Chi*  
Santiago de Cuba



MARY LOU BROOKER  
*Susan B.*  
Live Oak, Fla.



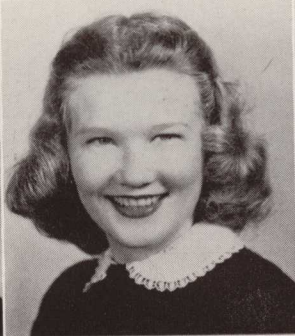
JUYNE BRYSON  
*Susan B.*  
Young Harris, Ga.



CAROLYN CREEL  
Decatur, Ga.



PATSY ELLIS  
*Phi Delta*  
Atlanta, Ga.



MARTHA GLOVER  
*Phi Delta*  
Athens, Ga.



JUYNE HARRIS  
*Susan B.*  
Atlanta, Ga.



BARBARA MCEWEN  
*Phi Delta*  
Honolulu, Hawaii



DOROTHY REED  
Sandy Springs, Ga.



HAZEL RIVERS  
*Susan B.*  
Lakeland, Ga.



MARY ANN ROSS  
*Susan B.*  
Young Harris, Ga.



Appleby Hall  
7:16 A. M.

# THE ACADEMY



ELIZABETH CAIN  
*Susan B.*  
Atlanta, Ga.



RUTH CLEMONS  
*Susan B.*  
Tallahassee, Fla.



MARIANO LOPEZ CLUA  
*Y. H. D. S.*  
Santa Clara, Cuba



DORIS HOLTON  
*Phi Delta*  
Athens, Ga.



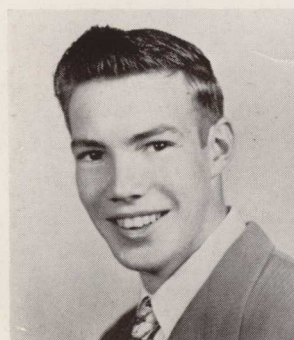
RENA HUGHES  
*Susan B.*  
Live Oak, Fla.



FAYE JOHNSON  
*Phi Delta*  
Atlanta, Ga.



FRANCISCO LUIS  
*Y. H. D. S.*  
Santa Clara, Cuba



JERE SUMMERS  
*Y. H. D. S.*  
Thomasville, Ga.



MARY TUTEN  
*Phi Delta*  
Savannah, Ga.



JOHN USRY  
Thomson, Ga.

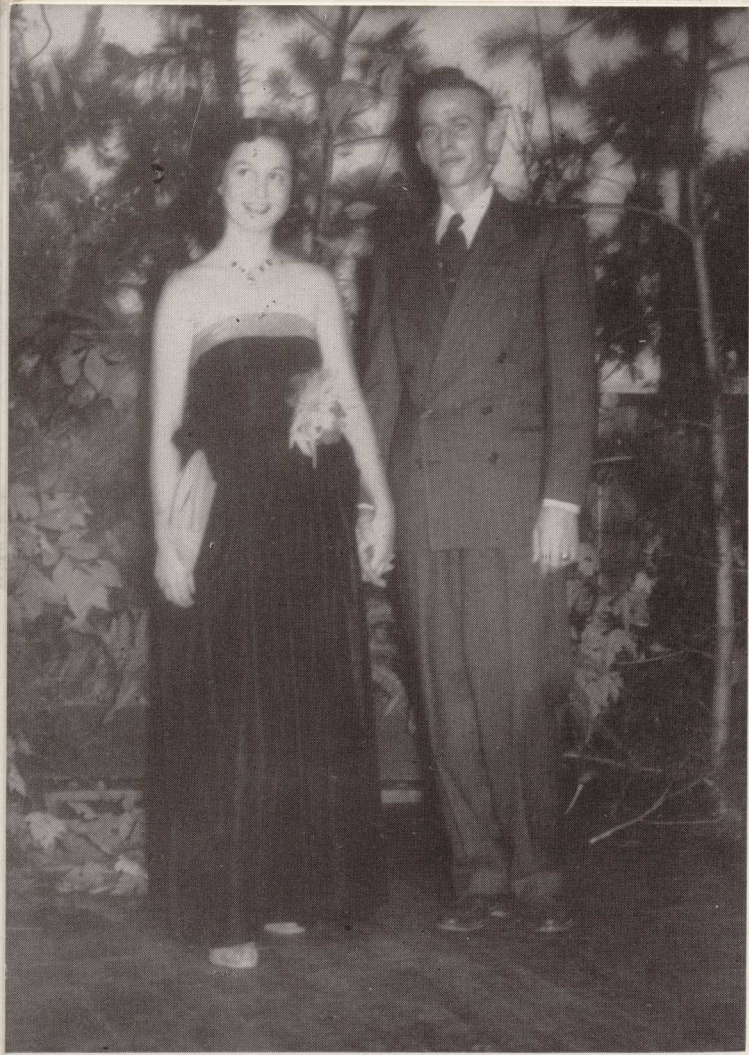


BETTY JANE WILDER  
*Phi Delta*  
Atlanta, Ga.

*We can't escape mumps!*

*Mail time—the happiest  
time of the day.*





*What Happened?*





# *Basketball*



*First row:* Dave Troughton, Tommy McMullan, Heyward Martin, and Louie Craig.  
*Second row:* Ralph Coker, Bob Kerr, Bill Bryson, and Hoyt Robinson.  
*Third row:* Bryan Craft, manager; Bob Waller, Lamar Twiggs, Wesley Morrison,  
 and Tommy Chapman, manager.

## VARSITY BASKETBALL TEAM

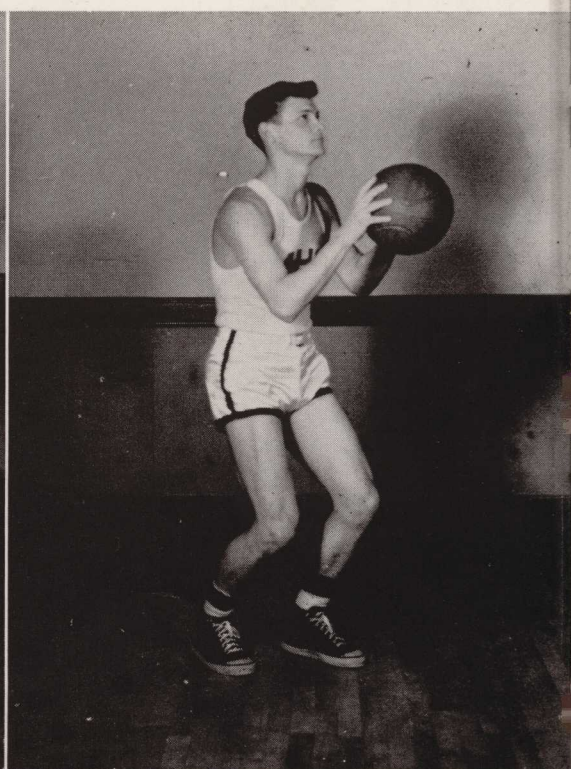
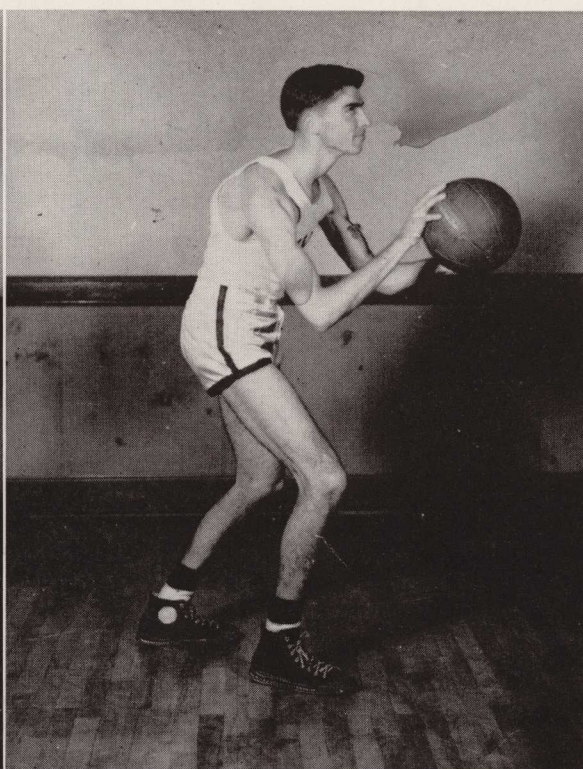
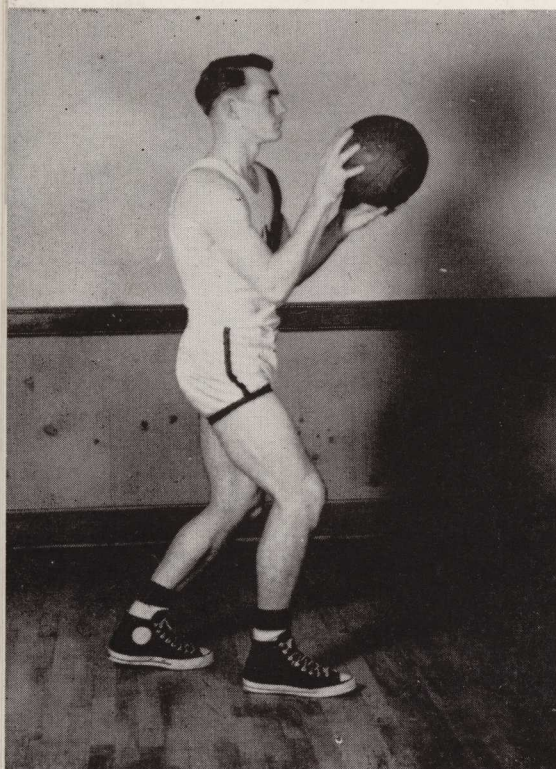


LUKE RUSHTON  
*Coach*

Morrison

Martin

Troughton



The 1948-49 Lions had a better than .500 season, winning 11 and losing 9 in regular season play. The team played a hard 20-game schedule, highlighted by road trips into South Georgia, Tennessee, and North Carolina. The Lions scored 1221 points to their opponents' 1050. This gave them a season's average of 48.8 points per game as compared with their opponents' 42-point average per game. This included tournament play.

Captain Wesley Morrison was high-point man for the season, making a total of 423 points for an average of 16.9 points per game. Co-Captain Heyward Martin was runner-up in points with 310 points for the season, to give him an average of 13.5 points per game.

The Lions participated in the Gainesville Mills Invitational Tournament, winning two and losing two. The team placed fourth in this tournament.

The Lions took part in the Southeastern Junior College Tournament held at Tifton, Georgia, March 9 through March 12.



(Top)  
HENRY FLOWERS  
Manager, Winter Quarter

(Not Pictured)  
CLYDE BEAVERS  
Manager

(Bottom)  
BOBBY STANLEY  
Winter Quarter addition to team.

(Not Pictured)  
CORNELL STOWERS

Y. H. C.	37—	Gainesville Mills	38
Y. H. C.	41—	Gainesville Mills	29
Y. H. C.	53—	Atlanta Tech. Inst.	15
Y. H. C.	35—	McEver Packers	45
Y. H. C.	42—	Blue Ridge	26
Y. H. C.	49—	Atlanta Tech. Inst.	47
Y. H. C.	52—	New Holland Mills	51
Y. H. C.	37—	Hiawassee College	57
Y. H. C.	53—	Tennessee Wesleyan	55
Y. H. C.	55—	Abraham Baldwin College	70
Y. H. C.	41—	Toccoa Falls	42
Y. H. C.	85—	Chicopee Lumite	16
Y. H. C.	30—	Chicopee	61
Y. H. C.	59—	Georgia Military College	66
Y. H. C.	55—	Middle Georgia College	44
Y. H. C.	45—	Abraham Baldwin College	65
Y. H. C.	65—	Chicopee Lumite	49
Y. H. C.	62—	Toccoa Falls	46
Y. H. C.	62—	Blue Ridge	30
Y. H. C.	51—	Blue Ridge	33

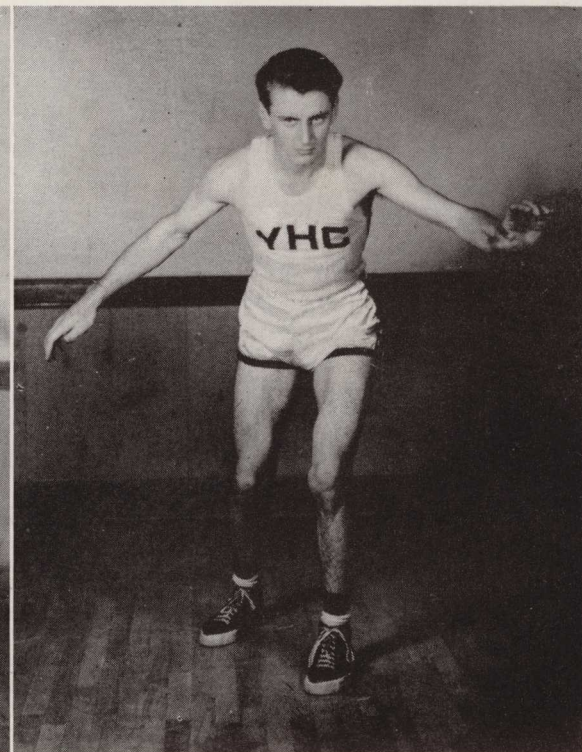
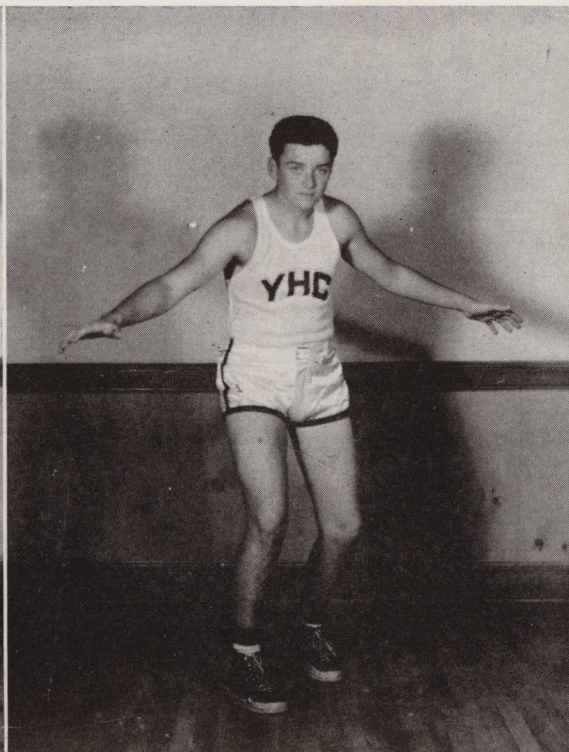
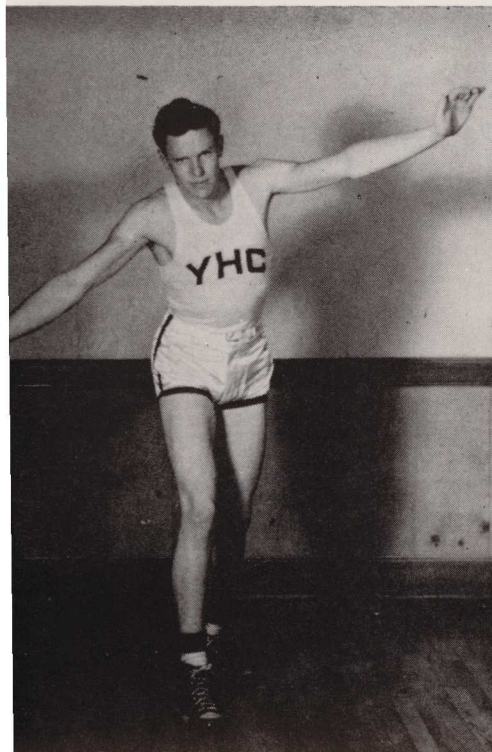
GAINESVILLE MILLS INVITATIONAL TOURNAMENT

Y. H. C.	59—	Norcross	25
Y. H. C.	63—	Clayton	36
Y. H. C.	38—	Chicopee	51
Y. H. C.	52—	New Holland Mills	53

Bryson

Kerr

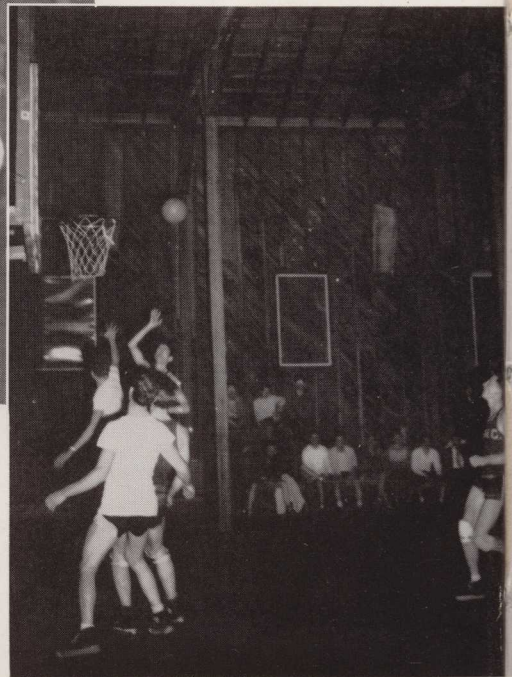
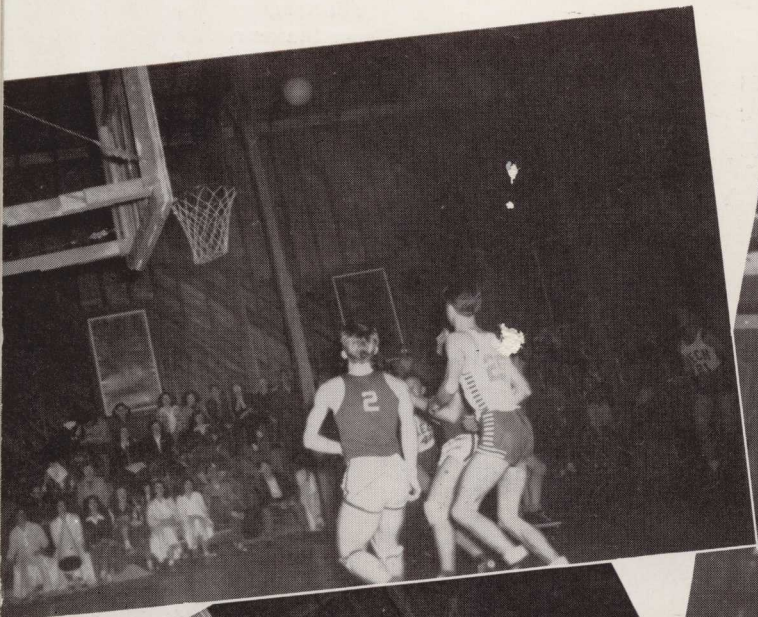
Robinson





*Kneeling:* Ruth Clemons, Faye Johnson, Dolores Smithson, Pat Ellis, and Gail Hartley.  
*Standing:* B. J. Wilder, Ruth Terry, and Nancy Weeks.

## THE CHEERLEADERS



# PHI CHI FOOTBALL TEAM

*First row:* John Hurn, Henry Greer, Corbin Avary, Jimmy Smithson, Zell Miller, Luke Dorris, and Hoyt Robinson.

*Second row:* Bill Bryson, Wiley Noland, Wesley Morrison, Paul Carson, Charlie Francis, and Darcy Bone.



# PHI DELTA BASKETBALL TEAM

*First row:* Betty Paris, Frances Knight, Martha Glover, and Sara Sue Dotson.

*Second row:* Doris Cash, Gloria Anderson, Emily McAfee, Joyce Bateman, and Margaret McLendon.

# PHI CHI BASKETBALL TEAM

*First row:* Jack Brinkley, Zell Miller, Ernesto Artamendi, and Darcy Bone.

*Second row:* Charlie Francis, H. O. Moore, Wiley Noland, and William Phillips.





## Y. H. D. S. FOOTBALL TEAM

*Seated on steps:* Gerald Bishop, Bryan Craft, and Winton Carlock.

*Kneeling:* Jere Summers and Eugene Dunn.

*Others:* Lewis Shurbutt, Bob Waller, Dave Troughton, Kenneth Wall, Bob Kerr, Jack Weldon, and Gerald Williams.

## SUSAN B. BASKETBALL TEAM

*First row:* Delores Hendley, Virginia Carter, and Bobbie Swanson.

*Second row:* Malissa Giles, Betty Jean Lovett, Jane Veal, Lettie Lee Westbrook, and Evelyn Westbrook.



## Y. H. D. S. BASKETBALL TEAM

*First row:* Clyde Beavers, Gerald Bishop, Bob Waller, Winton Carlock, Jack Weldon, and Gale Rogers.

*Second row:* Lindy Hayes, Gerald Williams, Lewis Shurbutt, Billy Snow, Max Barlow, Jewel Payne, and Raul Lugiyo.





*Organizations*



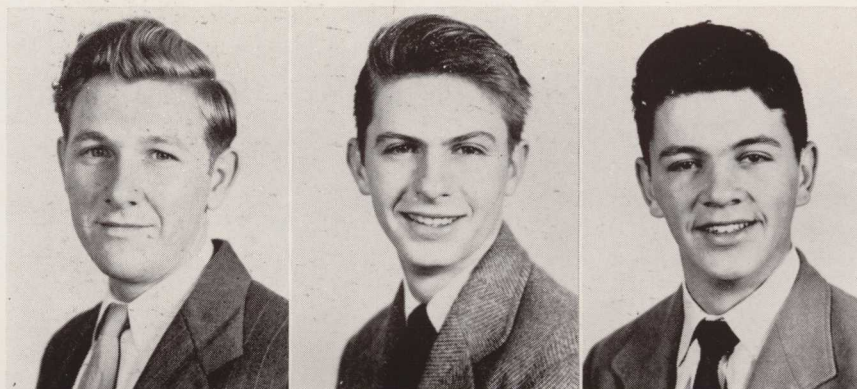
# PHI CHI DEBATING SOCIETY

*Presidents*

JOHN HURN . . . . . *Fall Quarter*  
 JOHN DORRIS . . . . . *Winter Quarter*

*Champion Debaters*

HENRY FLOWERS  
 ZELL MILLER  
 GUY SHARPE



*First row:* Luke Dorris, Wiley Noland, Kippy Kirkpatrick (mascot), John Hurn, John Arrowood.  
*Second row:* Manuel Domingo, Ernesto Artamendi, Dick Kiker, Darcy Bone, Bill Phillips, Hoyt Robinson.  
*Third row:* Chandler Baldwin, Charles Francis, Eugenio Arroyo, Clive Hallman, Bill Malone, John Gregory, Bill Bryson, Wesley Morrison, Heyward Martin, Jack Brinkley, Tommy McMullan, Corbin Avary, James Passmore, Cahill Kent, Ralph Coker, "Hank" Hankinson.  
*Fourth row:* Henry Greer, Guy Sharpe, Bill Paquin, Jimmy Smithson, Zell Miller, Paul Agnew, Paul Carson.



# PHI DELTA SOCIETY



EMILY McAFEE  
President



*Left:* Scene from the public program, "Opening Night at the Blue Plate Special."

*Seated:* Gail Hartley, Geneva Smith, Kippy Kirkpatrick (mascot), Betty Jane Wilder, Faye Johnson. *First row:* Jimmie Ree McNeal, Sara Due Dotson, Pat Redfean, Frances Jackson, Emily McAfee, Betty Paris, Helen Hammett, Joyce Satterfield, Louellen McDade, Jean Ridgeway, Julia Spencer. *In order of appearance:* Olga Leon, Vicky Highsmith, Gloria Anderson, Frances Knight, Margaret McLendon, Joyce Bateman, Carey Teen Niblack, Regina Smith, Frances Bolding, Jocelyn Martin, Ruth Terry, Patsy Ellis, Mattie Jane Martin, Mary Tuten, Marion Turner, Frances Perkins, Doris Cash, Doris Holton, Martha Glover, Virginia McEwen, Ann Harris, April Eynon, Ann Fleetwood.





# YOUNG HARRIS DEBATING SOCIETY

*Presidents*

DAVE TROUGHTON . . . . . *Fall Quarter*

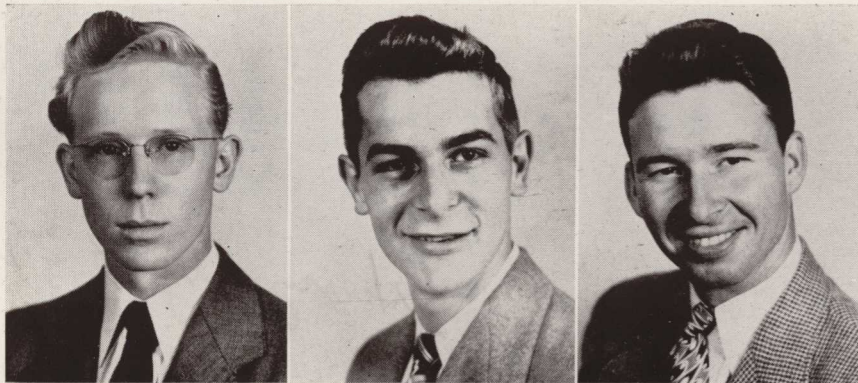
KENNETH WALL . . . . . *Winter Quarter*

*Champion Debaters*

WILLIAM REID

DOUGLAS SASSER

JACK WILLOUGHBY



*Left to right, first row:* Jack Weldon, Mariano Lopez, James Walcott, Melvin McKeehan, Gerald Davis, Dave Troughton, Bob Kerr, Max Barlow, Douglas Sasser, Gerald Bishop, Jack Willoughby, Bernard "Moe" Chandler, Winton Carlock. *Second row:* Marvin Mealor, Raul Lugioyo, F. L. Sherwood, Francisco Luis, Bryan Craft, Jere Summers, Kenneth Wall, Bob Waller, Bill Childres, LaVaughn Foster, Charles Voyles, Gale Rogers. *Third row:* Charles Warwick, Earl Nunn, Dan Stone, Leslie Scarborough, Eugene Dunn, Lindy Hayes, Manuel Carta, Herbert Bowman, Melvin Wimpy. *Fourth row:* Bill Fox, Wallace Evans, J. B. McNeil, Gerald Williams, Jewell Payne, Lewis Shurbutt, James Oakley, Raymond Garner, Bill Reid, J. C. Taylor, Theodore Wood. *Holding banner:* Tommy Chapman, Kenneth Millican.



# SUSAN B. HARRIS SOCIETY

The Duckworth Libraries  
Young Harris College  
Young Harris, Georgia



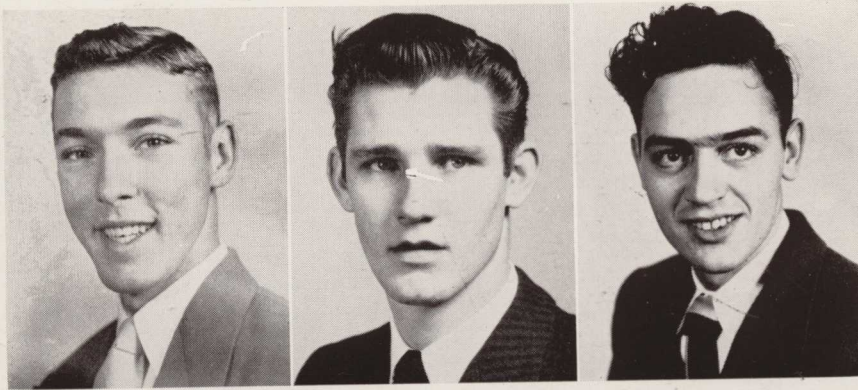
MALISSA GILES  
President



Left: Scene from the banquet program, "The Gypsy Caravan."

Seated on ground and steps: Ruth Clemons, Nancy Weeks, Juyne Harris, Beva Ann Phillips, Betty Jean Lovett, Luke Rushton (mascot), Rena Hughes, Elizabeth Ledford, Bobbie Adams, Juanita Barnard, Jane Veal. First row, standing: Sara King, Bobbie Walker, Delores Hendley, Bobbie Swanson, Kathy Walker, Dolores Smithson, Malissa Giles, Terre Blair, Agnes Kelly, Virginia Carter, Elizabeth Cain. Others: Harriet Rivers, Mary Lou Brooker, Mary Frances Axley, Dorothy Palmer, Betty Bryson, Dot Reed, Nancy Carter, Carolyn Creel, Lettie Lee Westbrook, Gertie Mae Holmes, Ruth Ann Jones, Kansie Lee Newton, Betty Jean Galloway, Betty Jean Styles, Martha Ann Akridge, Mary Parks Bugg, Naomi Matthews, Doris Denton, Evelyn Westbrook.





PHI CHI  
DEBATING SOCIETY

DARCY BONE

H. O. MOORE

WILEY NOLAND

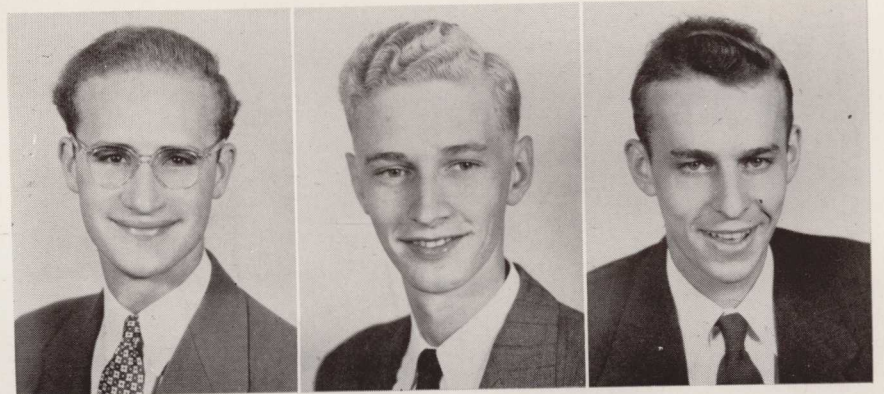
# WASHINGTON DAY SPEAKERS

YOUNG HARRIS  
DEBATING SOCIETY

GERALD DAVIS

J. B. McNEIL

DAN STONE

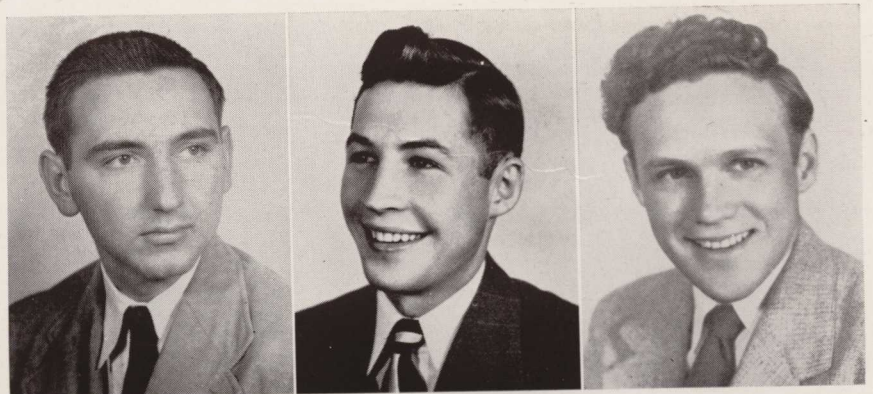


YOUNG HARRIS  
DEBATING SOCIETY

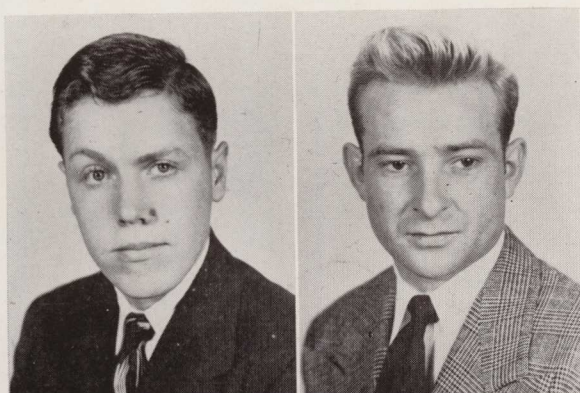
GERALD BISHOP

LEWIS SHURBUTT

KENNETH WALL



# CLAY MEDAL SPEAKERS



PHI CHI  
DEBATING SOCIETY

JACK BRINKLEY

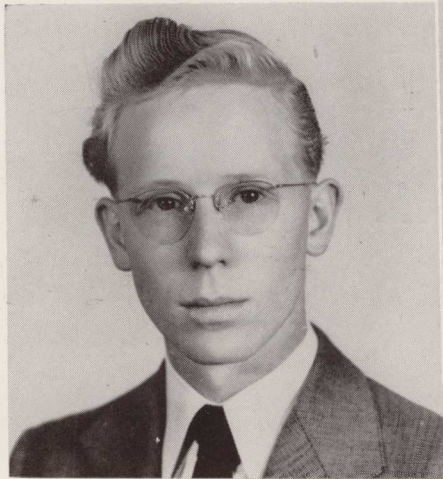
RALPH COKER  
(No picture)

HENRY GREER

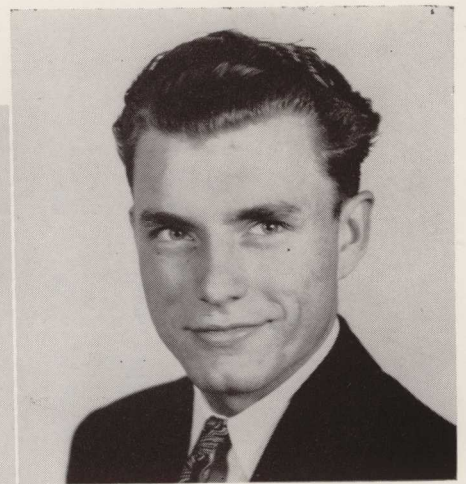
# INTERNATIONAL RELATIONS CLUB

WILLIAM REID . . . . . *Fall Quarter President*

LA VAUGHN FOSTER . . . . . *Winter Quarter President*



Reid



Foster

BERNARD "MOE" CHANDLER  
*Vice-President*

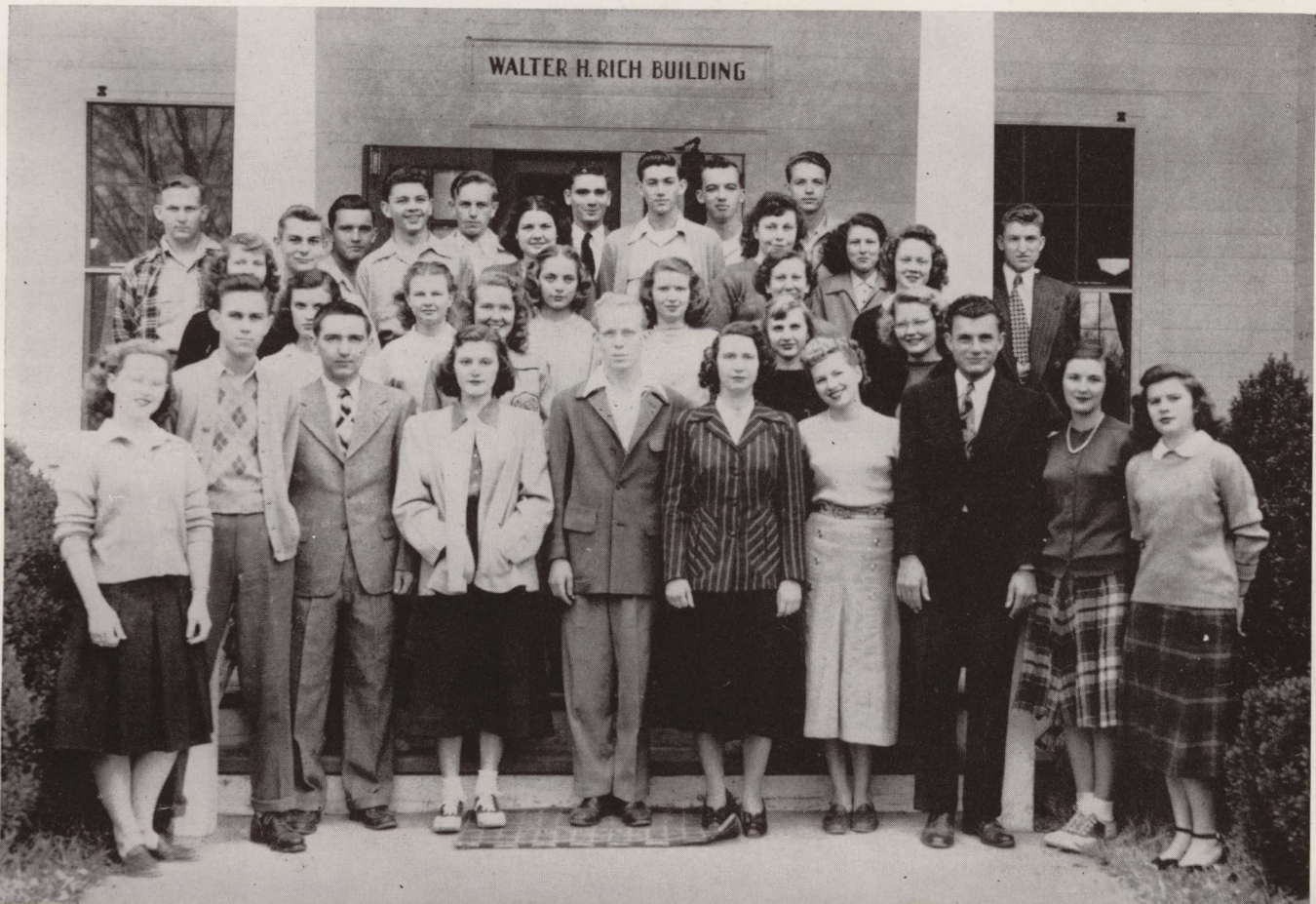
NANCY WEEKS  
*Secretary*

JIMMIE REE MCNEAL  
*Treasurer*

WINTON CARLOCK  
*Parliamentarian*



*First row:* Mary Parks Bugg, Cahill Kent, Gerald Bishop, Joyce Satterfield, Bill Reid, Miss Niblack, Sara Sue Dotson, La Vaughn Foster, Nancy Weeks, Louellen McDade. *Others in order:* Lindy Hayes, Jimmie Ree McNeal, "Bunker" Sasser, Jean Ridgeway, "Moe" Chandler, Guy Sharpe, Geneva Smith, Weyman Bryant, Bobbie Adams, Elizabeth Cain, Carolyn Creel, Gerald Williams, Bob Waller, Betty Jean Lovett, Max Barlow, Julia McElroy, Ann Harris, Mel Smith, Paul Carson, Martha Ann Akridge, Gloria Anderson, Virginia Carter, Jewel Payne.

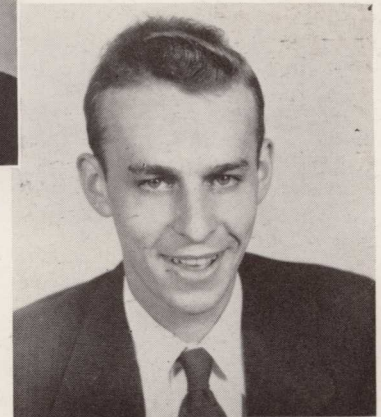


# STUDENT COUNCIL



BETTY PARIS  
*President*

DAN STONE  
*Vice-President*



JANE VEAL  
*Secretary*

GUY SHARPE  
*Solicitor General*



## PEEL HALL COUNCIL

*First row:* Lindy Hayes, Tommy McMullan, Guy Sharpe, Charlie Francis, Raul Lugioyo, and Darcy Bone.

*Second row:* Bryan Craft, Jewel Payne, Billy Childres, Paul Agnew, and Ernesto Artamendi.



## HAMBY HALL COUNCIL

*First row:* Herbert Bowman, J. B. McNeil, Clive Hallman, and John Dorris.

*Second row:* Raymond Garner, Jack Brinkley, Max Barlow, LaVaughn Foster, John Hurn and John Arrowood.





## STUDENT COUNCIL

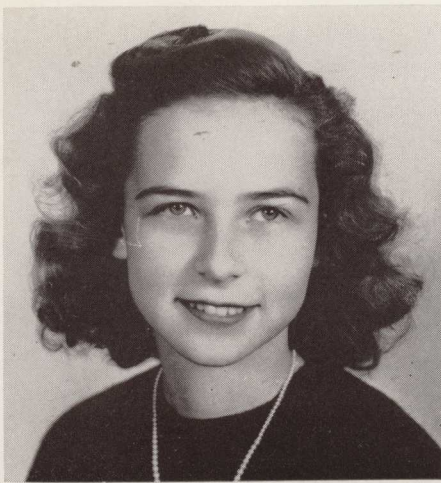
*First row:* Dave Troughton, Clive Hallman, LaVaughn Foster. *Second row:* Mattie Jane Martin, Jocelyn Martin, Frances Jackson, Helen Hammett, Betty Paris, Emily McAfee, Ann Fleetwood, Beva Ann Phillips. *Third row:* Professor Miller, Malissa Giles, Guy Sharpe, Jimmie Ree McNeal, Max Barlow, Olga Leon, Jack Wiloughby, Miss Gilstrap.

## AND PARTICIPATION

*Seated:* Dan Stone, Pat Redfearn, Miss Gilstrap, Miss McCurdy, Miss Autry, Julia McElroy, Gerald Williams.  
*Standing:* Mr. Miller, Mr. Atkins, Mr. Downs, Mr. Humphries.

## SUPREME COURT



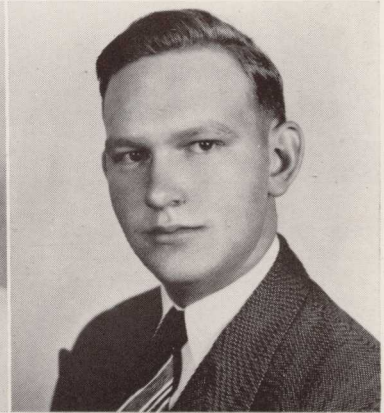


# COMMERCIAL CLUB

*President* . . . . . BOBBIE SWANSON  
*Vice-President* . . . . . JACK BRINKLEY

*Below*

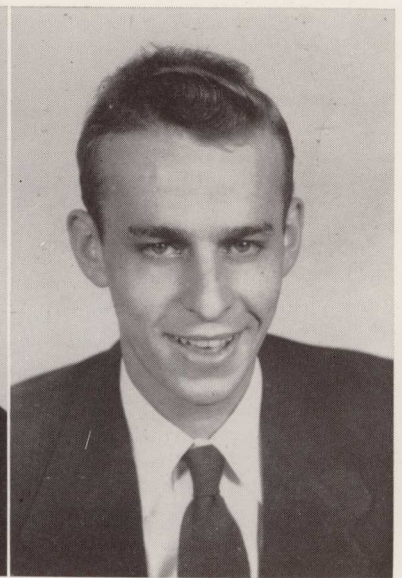
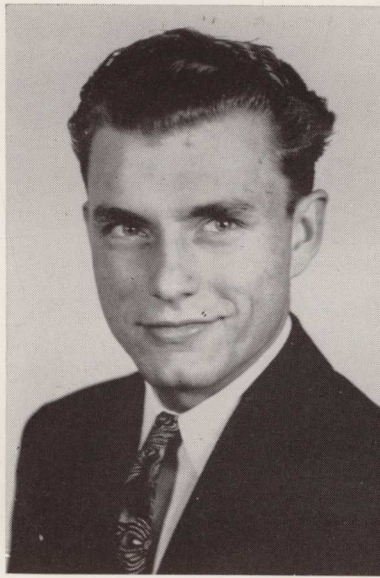
*Secretary* . . . . . LOUELLEN MCDADE  
*Treasurer* . . . . . CLIVE HALLMAN



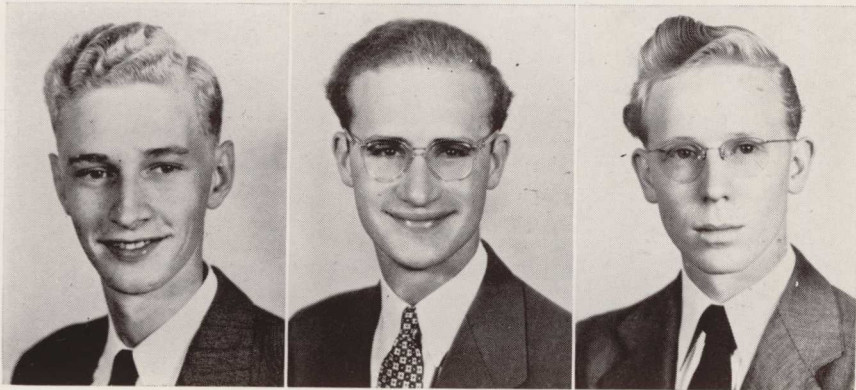
*Seated:* Pat Redfearn, Clive Hallman, Helen Hammett, Luke Dorris, Bobbie Swanson, Miss Autry, "Moe" Chandler, Guy Sharpe. *Standing:* Louellen McDade, Joyce Bateman, Olga Leon, Jocelyn Martin, Marion Turner, Jack Brinkley, Jimmy Smithson, Kathy Walker, Delores Hendley, Jack Weldon, Max Barlow, Geneva Smith.



# MINISTERIAL CONFERENCE



*Below:* J. B. McNeil, District Superintendent; Gerald Davis, Secretary; Bill Reid, Parliamentarian.



*Left:* LaVaughn Foster, Bishop, Fall Quarter.  
*Right:* Dan Stone, Bishop, Winter Quarter.

*First row:* Mel Smith, Dr. Dow Kirkpatrick, Julia Spencer, Max Barlow, Beva Ann Phillips, Lewis Shurbutt, Bob Kerr, Bill Reid, Winton Carlock, Jack Willoughby, "Bunker" Sasser, Gerald Williams, F. L. Sherwood, Nita Daniel, Wilford Hinely, Gerald Davis, Eugene Dunn. *Second row:* Terre Blair, Malissa Giles, Pat Redfearn, Marion Turner, Ann Fleetwood, Billy Childres, Guy Sharpe, Raymond Cook, Bill Paquin, Ralph Mabry, LaVaughn Foster, Paul Agnew.



# YOUNG LADIES CIRCLE

Right — *First row:* Kathy Walker, Delores Hendley, Nancy Weeks, Louellen McDade, Mrs. Atkins, and Jimmie Ree McNeal. *Second row:* Nancy Carter, Sara King, Ann Fleetwood, Juayne Harris, Geneva Smith. *Third row:* Bobbie Walker, Mary Frances Axley, Emily McAfee. *Fourth row:* Terre Blair, Doris Holton, Olga Leon. *Fifth row:* Julia Spencer, Virginia McEwen, Dorothy Palmer, Beva Ann Phillips, and Betty Paris. *Sixth row:* Lettie Lee Westbrook, Kansie Lee Newton, Julia McElroy, Mattie Jane Martin, and Martha Glover. *Seventh row:* Mary Bugg, Betty Jean Styles, Evelyn Westbrook, Marion Turner, and Agnes Kelly.

Below — *First row:* Ann Fleetwood, "Bunker" Sasser, Malissa Giles, and LaVaughn Foster. *Second row:* Winton Carlock, Jack Willoughby, Gerald Bishop, Guy Sharpe, and Gerald Williams. *Third row:* Miss Irene Williams (faculty advisor), Wilford Hinely, Nita Daniel, Dr. Dow Kirkpatrick, and Julia McElroy.



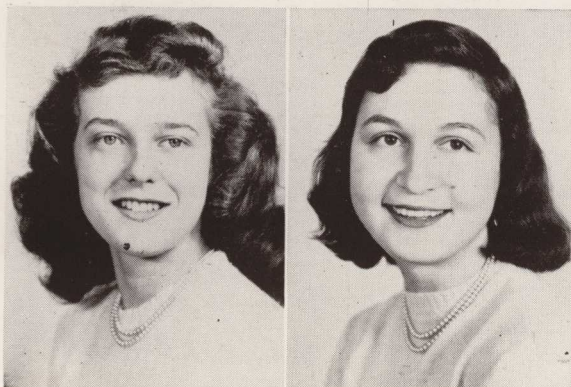
Methodist  
Student  
Fellowship  
Council

# DORCAS CLUB

President . . . . . BETTY PARIS  
 Vice-President . . . . . HELEN HAMMETT

Below

Secretary . . . . . BEVA ANN PHILLIPS  
 Treasurer . . . . . MALISSA GILES



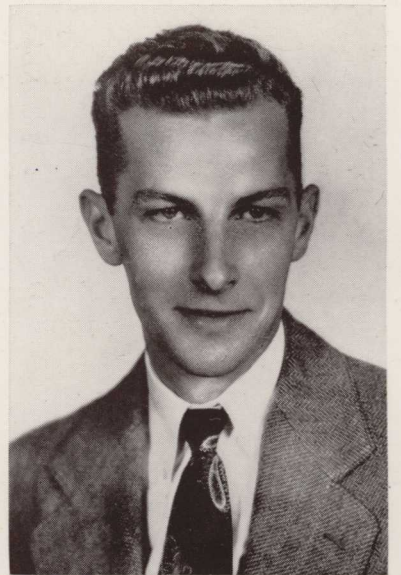
Seated on floor: Ann Fleetwood, Frances Jackson, Betty Paris, Beva Ann Phillips, Mattie Jane Martin, Helen Hammett. Second row: Emily McAfee, Jocelyn Martin, Bobbie Swanson, Pat Redfearn, Olga Leon, Malissa Giles.



# THE VETERANS CLUB



JOHN HURN  
*President, Fall Quarter*



JOHN ARROWOOD  
*President, Winter Quarter*



Center: MARVIN MEALOR . . . . . Secretary  
Left: KENNETH WALL . . . . . Vice-President  
Right: FITZHUGH SHERWOOD . . . . . Treasurer

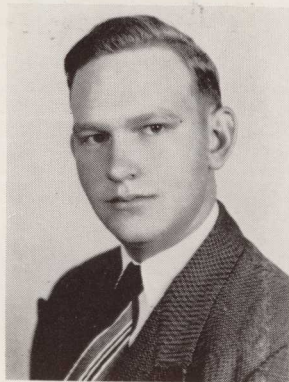
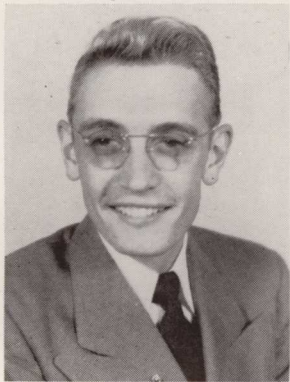


*First row: "Hank" Hankinson, John Hurn, Wiley Noland, Bill Paquin. Second row: Bill Bryson, F. L. Sherwood, Kenneth Wall, John Arrowood, Dick Kiker.*





# SPAT CLUB



## OFFICERS

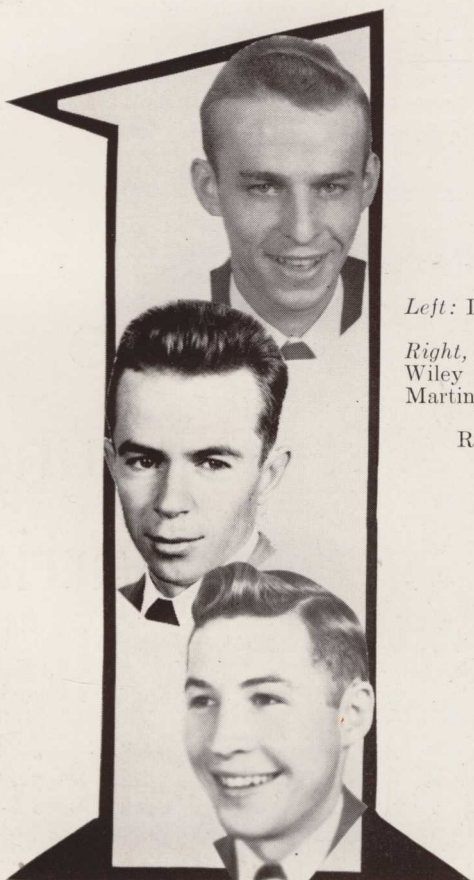
JOHN HURN . . . . . *Top Left*  
 . . . . . *Fall Quarter President*

JOHN DORRIS . . . . . *Top Right*  
 . . . . . *Winter Quarter President*

HERBERT BOWMAN . . . . . *Left*  
 . . . . . *Vice-President*

CLIVE HALLMAN . . . . . *Center*  
 . . . . . *Secretary*

JOHN ARROWOOD . . . . . *Right*  
 . . . . . *Treasurer*

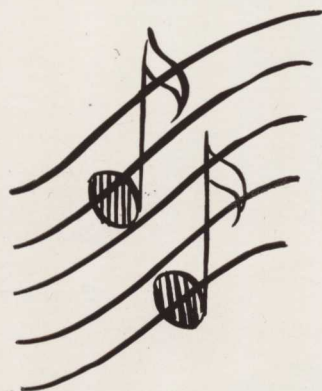


*Left:* Dan Stone, Bernard Hankinson, and Lewis Shurbutt.  
*Right, around figure:* Henry Greer, Wiley Noland, Bill Bryson, Heyward Martin, Wesley Morrison, and Zell Miller.  
 Ralph Mabry not pictured.

# The Schubert Music Club



*Seated:* Mrs. W. L. Downs (faculty advisor), Clive Hallman, Emily McAfee, Gail Hartley.  
*Standing:* Frances Jackson, Mary Frances Axley, Dorothy Palmer, Ruth Terry, Gerald Williams, Faye Johnson, Kathy Walker, Sara King, Delores Hendley, Geraldine Galloway.



*First row:* Kathy Walker, Elizabeth Ledford, Mrs. Downs (organist and director), Betty Paris, Hilda McCurdy.  
*Second row:* Mrs. L. C. Atkins, Mrs. Luke Rushton, Roxanna Austin, Cornelia Lowe, Edna Herren, Mary Frances Axley, Elizabeth Cain, Frances Knight. *Third row:* Guy Sharpe, Maurice Scott, Lewis Shurbutt, Bill Fox, Sanford Speir, Henry Flowers, Jack Willoughby, Billy Childres, Henry Greer.



# The Young Harris College Choir

# "A" CLUB

HERBERT BOWMAN . . . . . *President*  
 HENRY FLOWERS . . . . . *Vice-President*  
 EMILY MCAFEE . . . . . *Secretary*  
 DOLORES SMITHSON and  
 HOYT ROBINSON . . . . . *Treasurers*



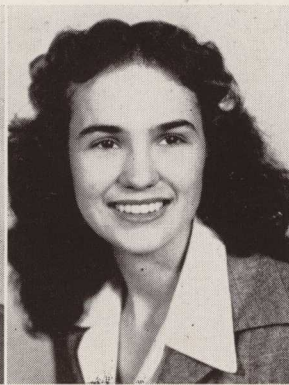
Flowers



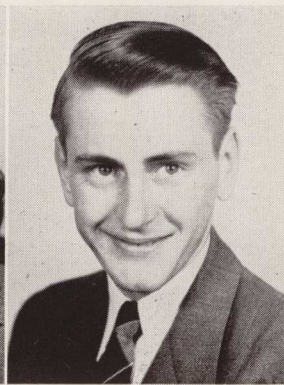
Bowman



McAfee



Smithson



Robinson

Louise Harris College Library  
 Young Harris, Ga.

*First row, kneeling:* Herbert Bowman, Jimmy Smithson, "Bunker" Sasser, Bill Malone. *Second row:* Joyce Satterfield, Sara Sue Dotson, Nancy Weeks, Harriet Rivers, Rena Hughes, Hazel Rivers, Louellen McDade, Jimmie Ree McNeal, Ann Fleetwood. *Third row:* Pat Ellis, B. J. Wilder, Hoyt Robinson, Ruth Clemons, Frances Knight, Mary Lou Brooker, Mary Tuten, Martha Ann Akridge, Emily McAfee, Dolores Smithson. *Fourth row:* Faye Johnson, Charlie Francis, Gail Hartley, "Moe" Chandler, Bob Kerr, Lindy Hayes, Darcy Bone, Tommy Chapman.



What happens when  
**THE ENOTAH**  
 goes to press



ANN FLEETWOOD  
 (Editor)  
 — and —



GUY SHARPE  
 (Associate Editor)

do the things they can't get anybody  
 else to do.



TERRE does  
 illustrations.



"Cheese"—or cheese cake?

JOHN—ARROWOOD, that is—  
 and JOHN—LUKE, that is—  
 and JOHN—HURN, that is—  
 and BERNARD—HANK, that is  
 —take pictures.

**WHO'S WHO**

- ANN FLEETWOOD . . . . . Editor
- GUY SHARPE . . . . . Associate Editor
- DAN STONE . . . . . Business Manager
- PAUL AGNEW . . . . . Advertising Manager
- TERRE BLAIR . . . . . Art Editor
- JOHN ARROWOOD . . . . . Photography
- JUYNE HARRIS and  
 DOUGLAS SASSER . . . . . Promotion Managers
- BETTY PARIS . . . . . Literary Editor
- MISS HERREN . . . . . Faculty Advisor

Staff Members: FRANCES KNIGHT, EMILY McAFEE,  
 GERALD DAVIS, GERALD BISHOP, JOHN HURN, BERNARD  
 HANKINSON, JOHN DORRIS, MEL SMITH, RUTH TERRY,  
 LOUELLEN McDADE, JIMMIE REE McNEAL, ZELL MIL-  
 LER, JACK WILLOUGHBY, and DELORES HENDLEY.

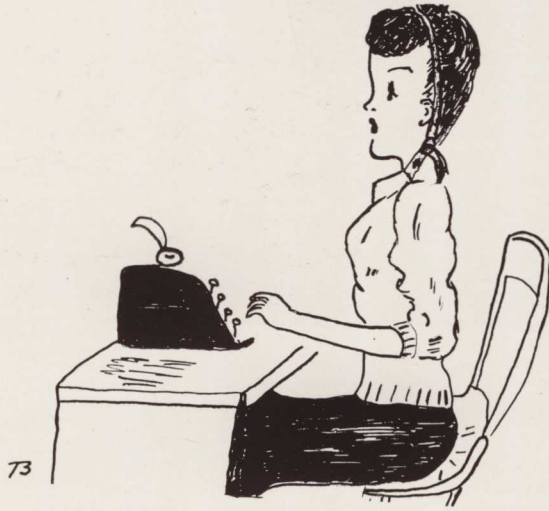


JUYNE and BUNKER keep  
 asking, "Don't you want  
 to buy an annual?" and  
 you keep giving the same  
 answer!

We send out letters to advertisers and copy to the printer.



We have a beauty contest.



Betty, Emily, and others type all those letters and the clubs and offices after your name.

— AND THEN —

We line up with a brave grin (except Terre and Miss Herren—they must be camera-shy) and hold our breath to await your approval of the annual.



# ENOTAH ECHOES STAFF



Reid



Barlow

WILLIAM REID . . . . . *Fall Quarter Editor*  
 MAX BARLOW . . . . . *Winter Quarter Editor*  
 GERALD BISHOP . . . . . *Assistant Editor*  
 MISS EDNA HERREN . . . . . *Faculty Advisor*

JOHN GREGORY . . . . . *Fall Quarter Business Manager*  
 MARVIN MEALOR . . . . . *Winter Quarter Business Manager*  
 DOUGLAS SASSER . . . . . *News Editor*  
 GUY SHARPE . . . . . *Assistant News Editor*  
 APRIL EYNON . . . . . *Feature Editor*  
 DOLORES SMITHSON . . . . . *Society Editor*  
 ZELL MILLER . . . . . *Sports Editor*  
 BERNARD CHANDLER . . . . . *Circulation Manager*  
 REGINA SMITH . . . . . *Art*  
 STARR MILLER . . . . . *Faculty Consultant*



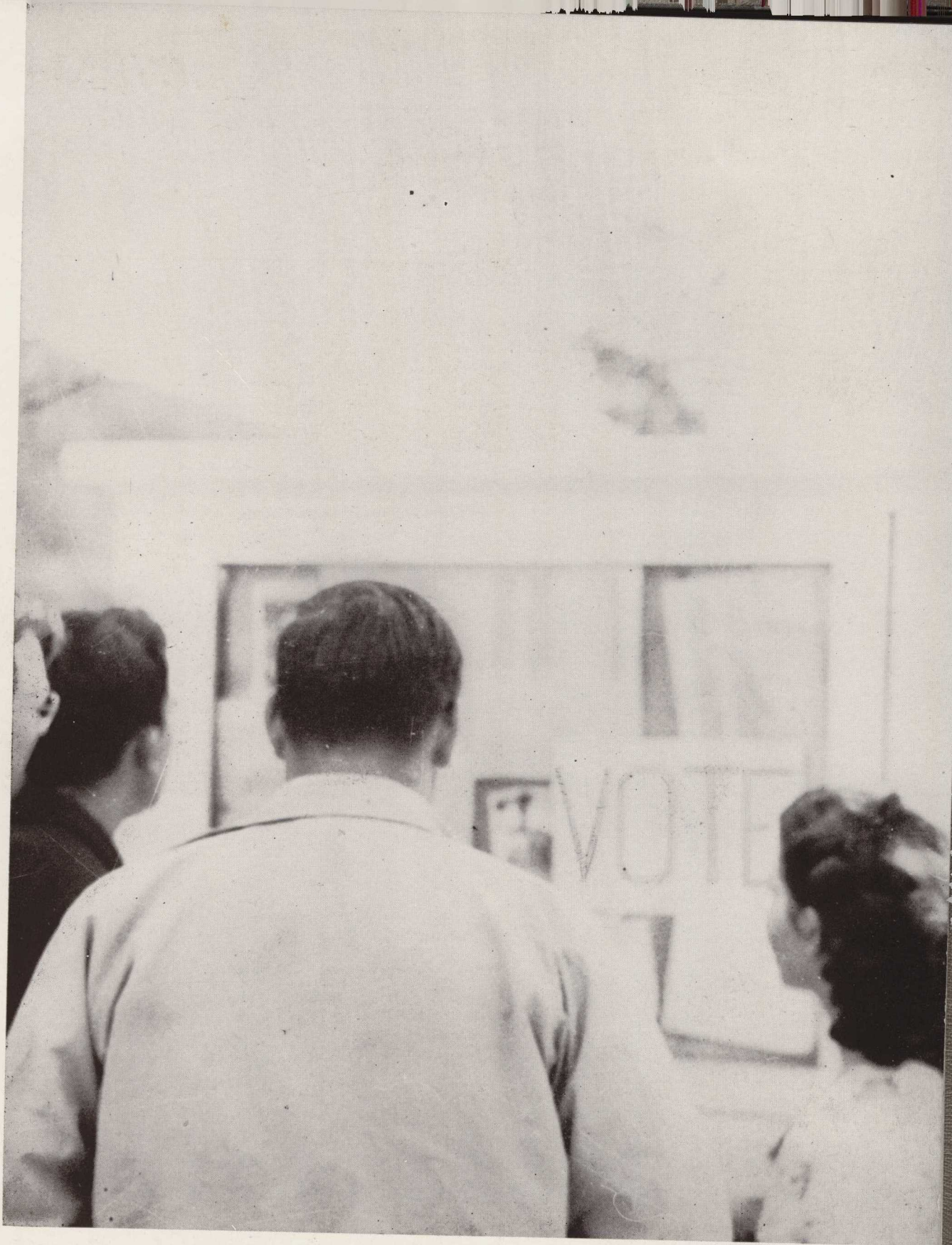
Bishop



Herren

*First row: Mary Parks Bugg, Nancy Carter, Gail Hartley, Ann Fleetwood, Helen Hammett. Second row: Jewel Payne, Bill Reid, Dolores Smithson, Tommy Chapman, Ruth Terry, April Eynon, Herbert Bowman, Jack Willoughby, Juyne Harris. Third row: Miss Herren, "Bunker" Sasser, Martha Glover, Marion Turner, "Moe" Chandler, John Gregory, Mel Smith, Marvin Mealor, Guy Sharpe, Geneva Smith, Winton Carlock, Zell Miller, Max Barlow, Jimmy Smithson, Tommy McMullan, Gerald Bishop, Professor Miller.*





*Features*

BEST ALL-ROUND

*Luke Dorris and Nita Daniel*



C  
O  
L  
L  
E  
G  
E

C  
O  
L  
L  
E  
G  
E



*Delores Hendley and Max Barlow*

MOST INTELLECTUAL

MOST POPULAR

*Luke Dorris and Ann Fleetwood*



C  
O  
L  
L  
E  
G  
E

C  
O  
L  
L  
E  
G  
E



*Lewis Shurbutt and Bobbie Swanson*

BEST LOOKING

MOST ATHLETIC

*Mattie Jane Martin and Hoyt Robinson*



C  
O  
L  
L  
E  
G  
E

C  
O  
L  
L  
E  
G  
E



*Ann Fleetwood and Lewis Shurbutt*

BEST DRESSED

BEST ALL-ROUND

*Emily McAfee and Zell Miller*



A  
C  
A  
D  
E  
M  
Y

A  
C  
A  
D  
E  
M  
Y



*Darcy Bone and Margaret McLendon*

MOST ATHLETIC

MOST POPULAR

*Emily McAfee and Darcy Bone*



A  
C  
A  
D  
E  
M  
Y

A  
C  
A  
D  
E  
M  
Y



*Earl Nunn and Geneva Smith*

MOST INTELLECTUAL

BEST LOOKING

*Carey Teen Niblack and Darcy Bone*



A  
C  
A  
D  
E  
M  
Y

A  
C  
A  
D  
E  
M  
Y



*Dolores Smithson and Chandler Baldwin*

BEST DRESSED

BEAUTY CONTEST WINNERS

*Miss Carey Teen Niblack*

*Sponsored by*

PHI DELTA SOCIETY





*Miss Juyne Harris*

*Sponsored by*

INTERNATIONAL  
RELATIONS CLUB



*Miss Beva Ann Phillips*

*Sponsored by*

YOUNG HARRIS  
DEBATING SOCIETY



*Miss Ruth Clemons*

*Sponsored by*

FACULTY BACHELORS

*Miss Gail Hartley*

*Sponsored by*

"A" CLUB



*Miss Bobbie Swanson*

*Sponsored by*

COMMERCIAL CLUB



# SNAPSHOTS



## M. S. F. COSTUME PARTY



## *Editor's Note*

In this, the twenty-fourth edition of the ENOTAH, we have attempted to show you the improvements that have been made at Young Harris College. There have been many of these, and work is still progressing even as the printer calls the deadline on our copy.

We have attempted to present, also, a record of the activities that have filled our time during this year.

We ask that you express your appreciation to our advertisers, for they help to make possible a publication of this kind.

I should like to express my appreciation to the staff members and especially to Miss Edna Herren, our faculty advisor, for the work done on the annual.

Speaking for the staff of '49, I wish the best of luck to next year's staff as they prepare to issue the twenty-fifth edition of the ENOTAH in 1950.

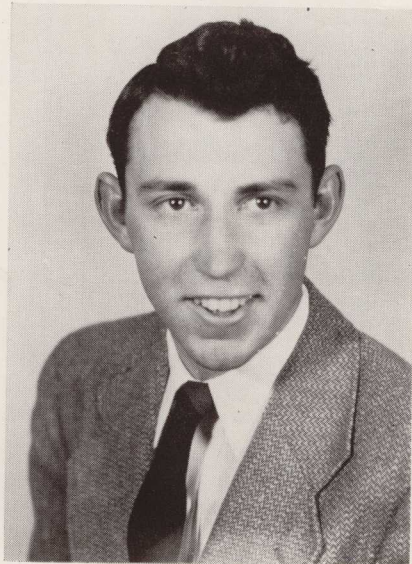
Sincerely,

Ann Fleetwood

*This page is dedicated to our students from Hayesville, N. C.*



Pansy



Julian



Mary Willma

*We recommend*  
**HAYESVILLE PHARMACY**

The Rexall Store  
Hayesville, N. C.  
L. P. Booth, Manager



Tommie



James



Marylyn



\*\*\* Each star represents one year of advertising with the ENOTAH.


This page is dedicated to our students from Atlanta.

**Gordon's**  
**FRESH**  
**POTATO CHIPS**  
*Are Richer and Better*

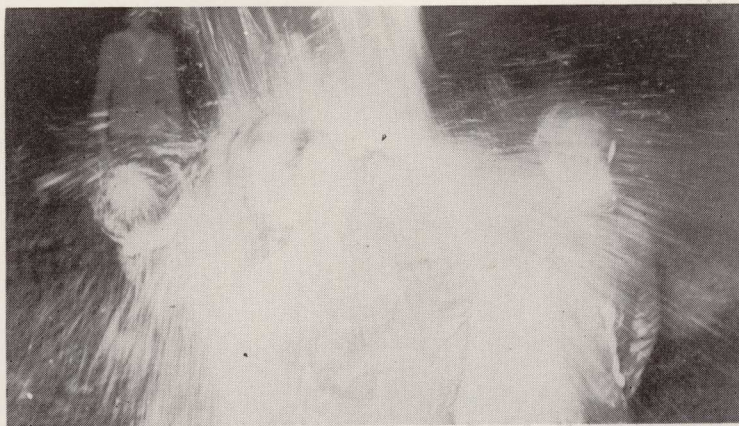


★

A Mark of  
**QUALITY**  
**FOODS**  
*New and*  
*Distinctive*  
*Emblem of*  
**COLONIAL**  
**STORES**



★ ★



"How dry I am!"



"Use Soapy—goo-oo-oo!"

*Compliments of*

**Hotel and Restaurant**  
**Supply Co., Inc.**

*Manufacturers and Distributors*  
of Complete  
Kitchen and Dining Room Equipment  
*Buy Direct*

Consult Our Engineering Department  
for Plans, Specifications, and Prices

PHONE  
WAlnut 7451

*Write*  
382 WEST PEACHTREE ST.  
ATLANTA, GEORGIA

★ ★ ★ ★ ★ ★ ★ ★

**Cherry**  
**Preserves**



Crystal cane  
sugar cooked  
slowly with  
tree-ripened fruit.

If you cannot purchase this in your home  
town—write us—P. O. Box J. S., Chicago (90)

 **Sexton**  
*Quality Foods*

D-14

★ ★ ★

\*\*\* Each star indicates one year of advertising with the ENOTAH.

This page is dedicated to all students at Young Harris College.

## YOUNG L. G. HARRIS COLLEGE

YOUNG HARRIS, GEORGIA

A JUNIOR COLLEGE UNDER THE CONTROL

OF THE

NORTH GEORGIA CONFERENCE

W. L. Downs, *President*

L. C. Atkins, *Registrar*

Margaret Hart, *Bursar*



*Compliments of*

**CABLE'S**

*Always at the Student's Service*

ICE CREAM

SANDWICHES OF ALL KINDS

YOUNG HARRIS

GEORGIA



*VISIT*

**THE LITTLE STORE**

for  
School Supplies—Stationery  
Notions—Greeting Cards  
and  
That "In-Between" Snack

Located on the Campus  
YOUNG HARRIS COLLEGE

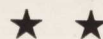


**Lawrence and Reba's  
Cafe**

CHICKEN—CHOPS  
SEA FOOD—SANDWICHES

Refreshments

YOUNG HARRIS, GEORGIA



\*\*\* Each star indicates one year of advertising with the ENOTAH.

This page is dedicated to our students from Hall County.

*Compliments*  
of  
**Neel Gap Trailways**  
GAINESVILLE, GEORGIA

★ ★ ★ ★ ★ ★ ★ ★  
★ ★

**Davis-Washington  
Company**  
BUILDING MATERIALS  
GAINESVILLE, GEORGIA

★ ★ ★ ★ ★ ★ ★ ★  
★ ★ ★



The Gypsy Camp



The Skating Party

**Gem Jewelry Co.**  
*Credit Jewelers*  
Most Modernistic Jewelry Stores in  
Northeast Georgia  
We Feature All Nationally Advertised  
Merchandise

113 W. Spring Street Phone 1496  
GAINESVILLE, GEORGIA

Trogon Building Phone 525  
TOCCOA, GEORGIA

★ ★ ★ ★ ★

**Flowerland Florist  
Inc.**  
*Quality Flowers for All Occasions*  
West Washington at Grove  
Telephone 94  
GAINESVILLE, GEORGIA  
*Flowers by Wire Everywhere*

★ ★ ★ ★ ★ ★ ★

*Compliments*  
of  
**THE ENOTAH STAFF**

*Compliments*  
**GALLANT BELK COMPANY**  
Gainesville's Largest and  
Best Department Store  
GAINESVILLE, GEORGIA

★ ★ ★

**PALMOUR'S**  
*Wholesale & Retail Hardware*  
Phone 10  
GAINESVILLE, GEORGIA

★ ★ ★ ★ ★

**BOWMAN FEED STORE**  
BABY CHICKS—POULTRY  
FEED  
GAINESVILLE, GEORGIA

★ ★ ★

\*\*\* Each star indicates one year of advertising with the ENOTAH.

This page is dedicated to our students from Hall County, Georgia.

**PILGRIM-ESTES  
FURNITURE CO.**

*Complete Home Furnishers*

LIVING ROOM, DINING ROOM,  
BEDROOM FURNITURE

Bigelow, Mohawk  
and  
Karagheusean Rugs

GAINESVILLE

GEORGIA



FORD

*Sales and Service*



**Gainesville Ford Co.**

318 SOUTH MAIN STREET

GAINESVILLE, GEORGIA

North Georgia's Largest Ford Dealer



*Compliments*

*of*

**Piedmont Drug Store**

GAINESVILLE, GEORGIA



*Compliments*

*of*

**Frierson-McEver Co.**

*Quality Apparel for Men*

GAINESVILLE, GEORGIA



**J. C. PENNEY CO.**

*"Where Savings Are Greatest"*

GAINESVILLE, GEORGIA



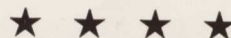
**The Barron Shoe Shop**

GAINESVILLE, GEORGIA

MRS. G. E. CONVILLE, *Owner*

*Prices According to Grade of Material*

Shoes Dyed All Colors



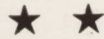
\*\*\* Each star indicates one year of advertising with the ENOTAH.

This page is dedicated to the local students from Georgia and North Carolina.

**HIAWASSEE HARDWARE CO.**

BUILDING MATERIAL, ELECTRICAL SUPPLIES,  
SEED AND FERTILIZER

HIAWASSEE, GA.



**CLAY HARDWARE**

*International Parts*

GENERAL HARDWARE

HAYESVILLE, N. C.



**Blairsville Hardware & Supply Co.**

Roofing, Sheet Rock, Cement, Windows and Doors, Paints  
Seeds, Fertilizer, Spray Material, Farm Equipment, Electrical Supplies

BLAIRSVILLE, GEORGIA



\*\*\* Each star indicates one year of advertising with the ENOTAH.

This page is dedicated to our students from North Carolina.

*Compliments of*

**Smoky Mountain Gas  
Company, Inc.**

*Sales and Service*

Phone 76

MURPHY, NORTH CAROLINA



*Compliments*

*of*

**Murphy Hardware Co.**

R. C. MATTOX, *Owner*

MURPHY, NORTH CAROLINA



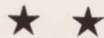
**Padgett's Furniture  
Store**

Household and Kitchen Furniture  
Radios and Electric Appliances

PHONE 187

J. GUY PADGETT, Alumnus Class of 1925

HAYESVILLE, N. C.



**Dickey-Crain Co.**

*American Beauty Flour*

Wholesale Grocers

FLOUR—FEED

GROCERIES



*Compliments of*

**BOICE SUPPLY CO.**

HAYESVILLE, NORTH CAROLINA

*Wholesale and Retail Merchants*



**BELL BROTHERS**

FOUNTAIN DELICACIES  
CIGARS AND TOBACCO  
SANDWICHES

HAYESVILLE, NORTH CAROLINA



*Compliments*

*of a*

**FRIEND**

**Western Auto Associate Store**

MURPHY, NORTH CAROLINA



*Compliments*

*of*

**CHEROKEE FURNITURE CO.**

W. P. ODEN, *Manager*  
MURPHY, NORTH CAROLINA



**WEISS' DEPT. STORE**

LADIES' READY-TO-WEAR  
SHOES FOR ENTIRE FAMILY  
MATERIAL  
MURPHY, NORTH CAROLINA



\*\*\* Each star indicates one year of advertising with the ENOTAH.



This page is dedicated to our students from Towns County.

# **BANK OF HIAWASSEE**

MEMBER FEDERAL DEPOSIT INSURANCE CORPORATION

Resources over \$1,000,000

DO BUSINESS WITH YOUR LOCAL BANK

J. Y. DENTON, *Cashier*



\*\*\* Each star indicates one year of advertising with the ENOTAH.

This page is dedicated to our students from Gilmer County.

*Compliments  
of*

**ELLIJAY HARDWARE AND FURNITURE  
COMPANY**

H. W. HAMPTON, *Owner*

*QUALITY MERCHANDISE*

ELLIJAY, GEORGIA

General Electric Ranges - Refrigerators - Water Heaters  
Ru-Ber-Oid Shingles - Sidings and Roll Roofing  
Sparton, Motorola, and Stewart-Warner Radios  
Youngstown Kitchens by Mullins  
Boatwright Paint and Varnishes  
National Pressure Cookers  
Oliver Farm Equipment  
Simmons Bedding  
Plumbing  
Wire

*"EVERYTHING FOR THE HOME"*



**SAILORS  
MOTOR COMPANY**

*"There's a FORD in Your  
Future"*

F O R D  
SALES AND SERVICE

Ellijay, Georgia

PHONE 82



*Compliments  
of*

**TANKERSLEY  
HOTEL\***

ELLIJAY, GEORGIA

**Bryan Parks\***

County School Superintendent  
ELLIJAY, GEORGIA

**Professor J. E. Weeks\***

ELLIJAY, GEORGIA

**Bill Westmoreland\***

County Clerk  
ELLIJAY, GEORGIA

**Penland Brothers\***

ELLIJAY, GEORGIA

\*\*\* Each star indicates one year of advertising with the ENOTAH.

This page is dedicated to all students at Young Harris College.

Compliments  
of a  
**FRIEND**

Compliments of ★  
**Mr. and Mrs. R. L. Hendley**  
Vienna, Georgia

**STUDENTS**

**Support Your ENOTAH Advertisers**

Compliments  
of  
**A FRIEND**

Compliments  
of  
**A FRIEND**

Compliments of  
**ANDREWS MOTOR CO. ★**  
WALTER LEE ANDREWS, *Owner*  
DeSoto — Plymouth — Chrysler Motors Products  
*Great Cars — Fine Service — A Square Deal*  
411 2nd Ave. Rome, Ga. Phone 6567

Compliments of  
**Elberton Granite Memorial  
Company**

A Complete Service  
From Quarry—To Plant—To Cemetery

Post Office Box 758  
ELBERTON, GEORGIA ★

Compliments of ★  
**Owens Hardware Co.**  
Rome, Georgia

**HEADS STORE**  
GENERAL MERCHANDISE  
CLEVELAND, GEORGIA ★ ★

Compliments of ★ ★  
**PEOPLES BANK**  
Cleveland, Georgia

**Blue Ridge Electric  
Association, Inc.**  
R.E.A. CO-OP  
Distributors of  
T. V. A. POWER ★ ★  
YOUNG HARRIS, GEORGIA

Compliments of ★ ★ ★  
**IMPERIAL PHARMACY**  
*Your Best Drug Store*  
GAINESVILLE, GEORGIA

\*\*\* Each star indicates one year of advertising with the ENOTAH.

This page is dedicated to our students from Ellijay and Blue Ridge, Georgia.

**THE BANK OF ELLIJAY**

*Member of the Federal Deposit*

*Insurance Corporation*

"LET THIS BANK PROTECT  
YOUR SAVINGS"

ELLIJAY, GEORGIA



*Compliments*

*of*

**J AND C BEDSPREAD  
COMPANY**

ELLIJAY, GEORGIA



**K & K AUTO PARTS CO.**  
AUTO, TRUCK, AND TRACTOR  
PARTS

*Distributors*

PHONE 127  
ELLIJAY, GEORGIA



*Compliments*

*of*

**A FRIEND**

ELLIJAY, GEORGIA



*Compliments of*

**Dr. Ed W. Watkins**

Ellijay, Georgia



Compliments of

**GREENLEAF CAFE**

Ellijay, Georgia

Compliments of ★

**MRS. A. R. ROGERS'**  
**DEPARTMENT STORE**  
Blue Ridge, Georgia

\*\*\* Each star indicates one year of advertising with the ENOTAH.

*Photography in this Yearbook*  
*Conducted by*

**EDWARD  
GOOD**

★ ★



**Specialist in  
Yearbook  
Photography**

*Winder, Georgia Phone 346-J for Appointment*

*Negatives on File for Reorder*

**THE ENSLEY STUDIO**

46½ BROAD STREET

WINDER, GEORGIA



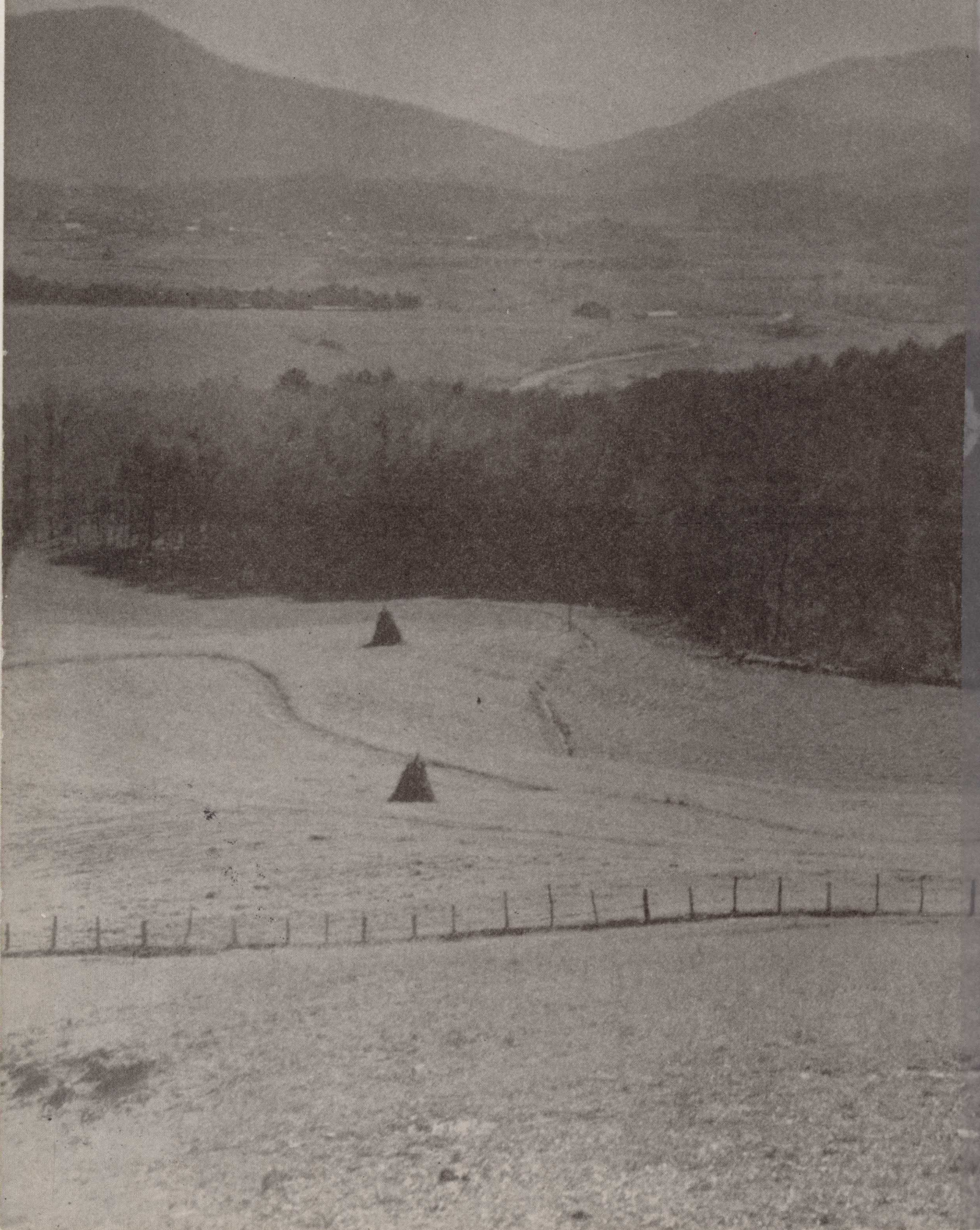
**FOOTE & DAVIES, INC.**  
ATLANTA

*Creators and Producers of  
Distinctive Annuals*

FOR OVER 60 YEARS



**PHOTO PROCESS**  
*Engraving Company*  
**ATLANTA**



REF  
50839001082684  
LD 6372 .Y68 1949  
Enotah



YOUNG HERTS COLLEGE LIBRARY  
YOUNG HERTS COLLEGE  
YOUNG HERTS GA



