

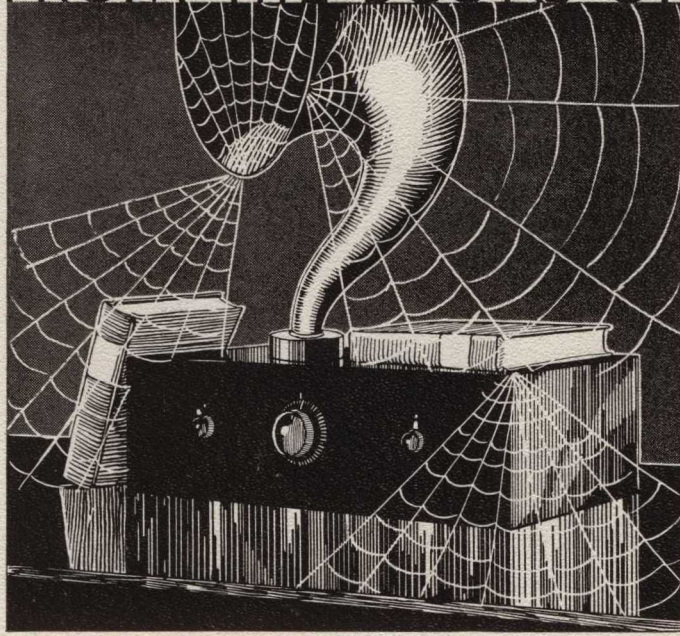
DUCKWORTH LIB. YOUNG HARRIS COLLEGE



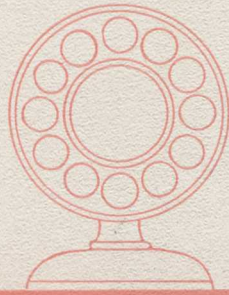
5 0839 00108245 2

ENOTAH
1932

FROM THE BOOKS OF



6368



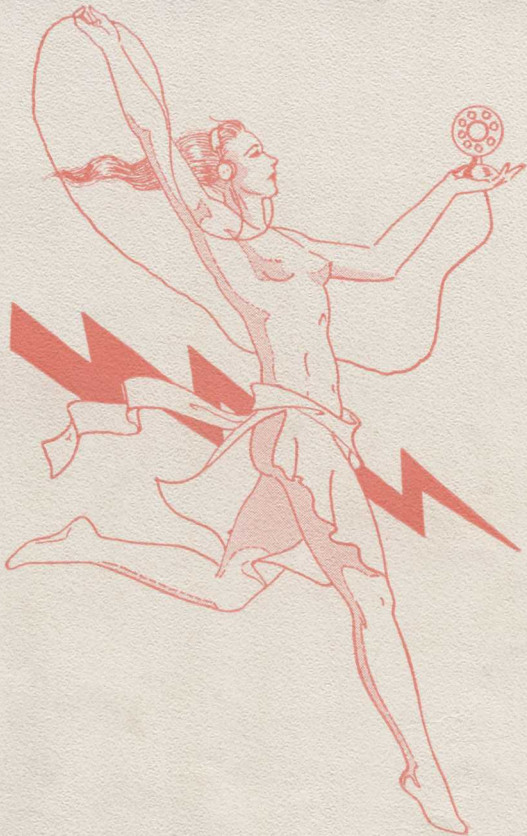
The
ENOTAH
1932

PUBLISHED BY THE
SENIOR CLASS
OF
YOUNG HARRIS COLLEGE
YOUNG HARRIS-----GEORGIA





C O N T E N T S



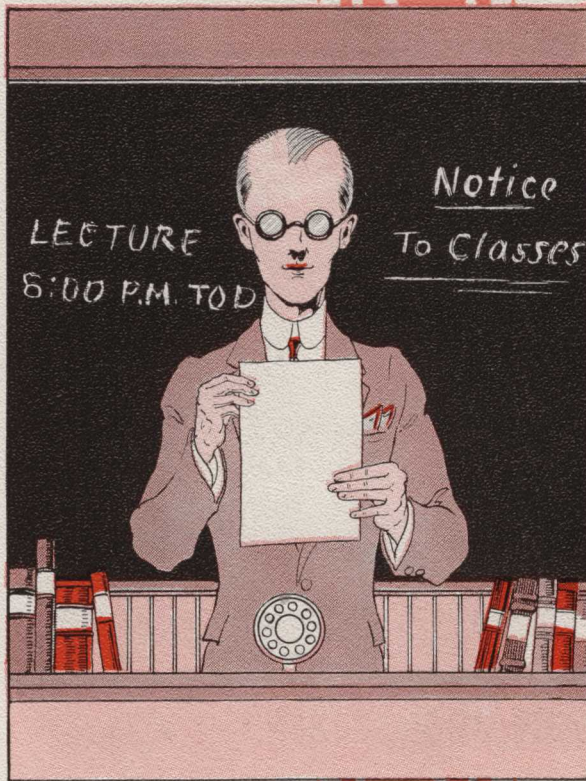
Book I
THE COLLEGE

Book II
CLASSES

Book III
ATHLETICS

Book IV
ORGANIZATIONS

Book V
FEATURES



COLLEGE



Library

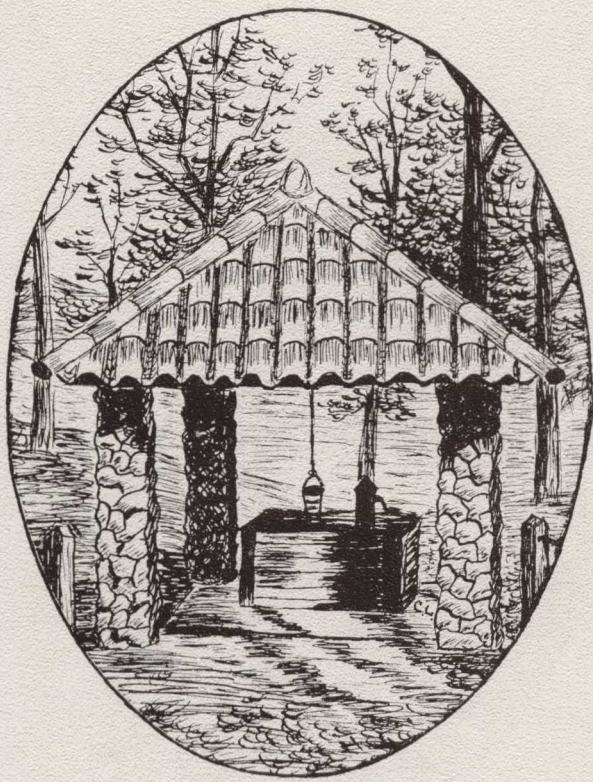




Chapel



ENOTAH



Peel Hall



ENOTAH



President's Home



FACULTY



J. W. SHARP, M.A.
*Department of French
Registrar*



S. G. MILLER, M.A.
(Deceased)
*Dean
Department of History*



W. C. LEAKE
Business Manager



S. B. TOLAR, M.S.
Department of Science



MRS. S. B. TOLAR
Librarian



J. C. CAMP, A.B.
Department of English



WILMA COLEMAN, A.B.
*Department of Academy
English
Department of Expression*

FACULTY



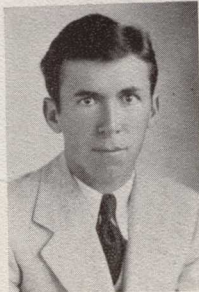
E. L. ADAMS, A.B.
*Department of Education
Bible*



T. J. LANCE, M.A.
President



W. S. MANN, A.B.
Department of Mathematics



W. L. DANCE, A.B.
*Department of Academy
English*



LILIAN DAWSON, A.B.
Department of Latin



MRS. MARY LOU OZBURN
Assistant Matron



MARY ELIZABETH BRUCE,
A.B.
*Department of Academy
History*

FACULTY



MRS. J. A. SHARP
Matron



MARY WILL WAKEFORD,
A.B.
*Department of Academy
Mathematics
Department of Commercial
Training*



EUGENIA WRIGHT, B.M.
Department of Music



H. L. BUTT, A.B.
Principal of High School



IVA GREENE
Department of Art



LESLIE JONES, A.B.
Department of Education



R. B. HAWKINS, M.A.
*Department of Religious
Education*



C L A S S E S

ALMA MATER

*In Georgia where the mountains blue
Are pointing towards the sky;
There stands our Alma Mater dear,
There's where our hearts all lie.*

*We're true to thee, dear Y. H. C.
Thy fame is our delight;
We hail thee Alma Mater dear
Thy Purple and thy White.*

*Tho' time may pass o'er these dear halls
We'll still come back to thee;
And still we'll cherish memories of
Our days at Y. H. C.*

*We're true to thee, dear Y. H. C.
Thy fame is our delight;
We hail thee Alma Mater dear
Thy Purple and thy White.*

SENIORS
CLASS OF 1932

ˆ ˆ ˆ ˆ

BOBBIE TOLAR
Mascot

JOE VAUGHAN
President

HAZEL JACOBS
Vice-President

DEWITT SHIPPEY
Secretary and Treasurer



ENOTAH

LOUISE MARGARET ADAMS
"Betty"

Elberton, Ga.

Susan B. Society; Life Service Band; Shubert Music Club, '30-'31; Choir.

LOVICK ADAMS
"Lovick"

Danielsville, Ga.

Y. H. D. S.; Intercollegiate Debater; Choir; Student Volunteers; Ministerial Association; President of Ministerial Association; Forensic Club; Honor Roll, '30-'31.

JANIE LOU ALFORD
"Jane"

Union City, Ga.

Phi Delta Society.

CHARLES L. ALLEN
"Athlete"

Cbipley, Ga.

Phi Chi Society; Intercollegiate Debater; Anniversarian of Phi Chi; Ministerial Association; Choir, '30-'31; Glee Club, '30-'31; Evangelistic Club; Forensic Club.

AGNES CARMİ BURNS
"Carmi"

LaFayette, Ga.

Associate Editor of *Enotah Echoes*; Student Council; Honor Roll, '30-'32; Working Gang; Vice-President Student Volunteers, '31-'32; Chaplain and Treasurer Phi Delta Society.

CHARLES D. ALLEN
"C. D."

Atlanta, Ga.

Y. H. D. S.; Intercollegiate Debater; Football, '31-'32; Forensic Club.

MINNIE BURRY
"Miss Berry"

Orange Lake, Fla.

Phi Delta Society; Student Volunteers; Life Service Band.

LELAND H. BAGWELL
"Brother-in-law"

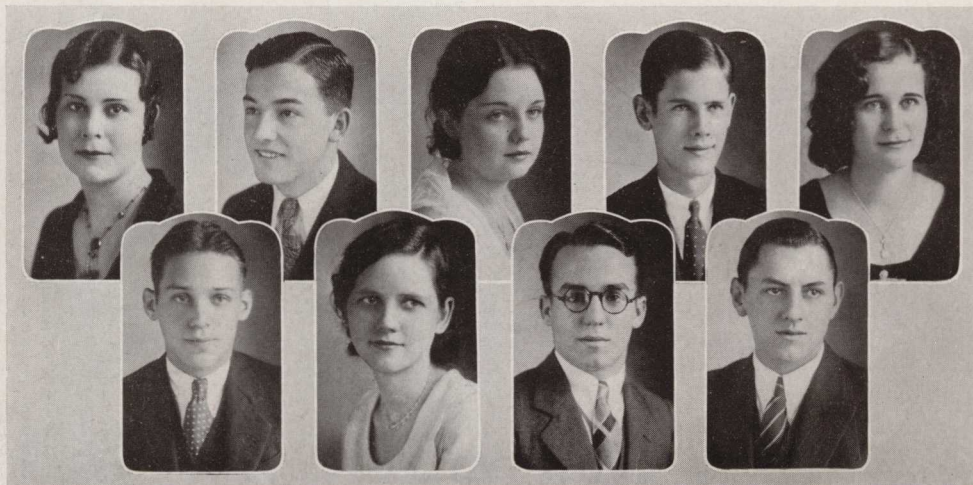
Alpharetta, Ga.

Phi Chi Society; President Phi Chi Society; Intercollegiate Debater; Sport Editor of *Enotah Echoes*; Football, '31-'32; Basket-ball, '30-'31; Honor Roll, '30-'32; Forensic Club; Red Devil Basket-ball, '31-'32.

TOM BRADY
"Tommy"

Austell, Ga.

Phi Chi Society; Student Volunteers; League; Choir.



ENOTAH

LLOYD E. BOYKIN
"Boykin"

Sylvania, Ga.

Y. H. D. S.; Working Gang,
'31.

EDNA MAE CLARK
"Ditto"

Mulberry, Fla.

Phi Delta; Dramatic Club, '30-
'32; Treasurer Dramatic Club,
'32; Music Club, '31-'32; Student
Volunteers; Life Service Band;
Honor Roll, '30-'32.

DOROTHY COOK
"Dot"

Barnesville, Ga.

Phi Delta Society; Dramatic
Club, '30-'32; President Dra-
matic Club; Basket-ball, '30-
'31; Choir, '31-'32; League;
Honor Roll, '30-'32.

DWIGHT CLARK
"Clark"

Choestoe, Ga.

Honor Member of Y. H. D. S.,
'31; Working Gang, '31.

ADELINE BROWN
"P. S."

Cumming, Ga.

Susan B. Society; League.

CLIFFORD W. BARNES
"Tip"

Comer, Ga.

Phi Chi Society; President of
Phi Chi Society; Intercollegiate
Debater; Manager Football
Team, '31-'32; Dramatic Club;
Baseball, '30-'31; Supreme
Court, '31-'32; Forensic Club.

BARBARA BRUCE
"Babs"

Valdosta, Ga.

Susan B. Society; Life Service
Band; Student Volunteer; Music
Club; Vice-President Susan B.
Society; League; Honor Roll,
'30-'31.

DURWARD FIELDS
"Cub"

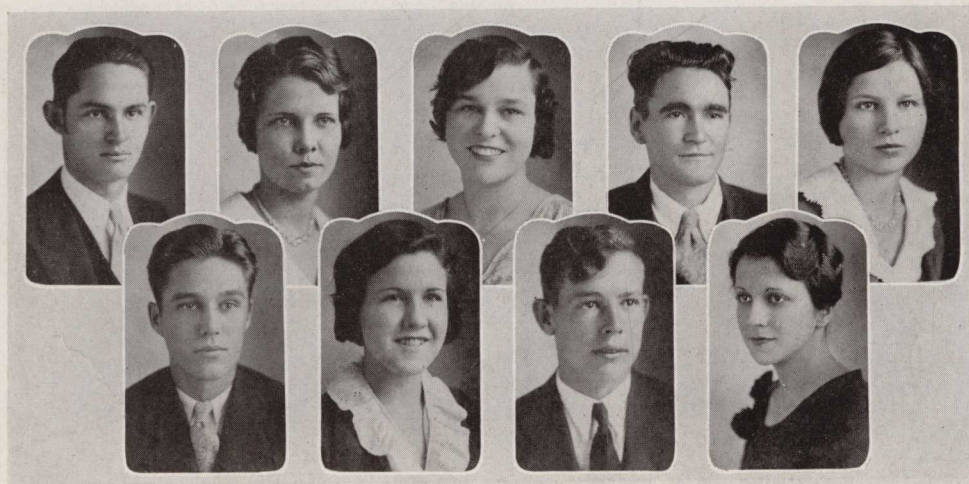
Hull, Ga.

Y. H. D. S.; Choir, '31-'32;
Working Gang, '31.

SARAH FRANCES DEARISO
"Shorty"

Young Harris, Ga.

Susan B. Society.



ENOTAH

RAYMOND DUNCAN
"Dunc"

Douglasville, Ga.

Phi Chi Society; President Phi Chi Society; Vice-President Phi Chi Society; Vice-President Student Body, '31-'32; Football, '30-'32; Manager ENOTAH Staff, '31-'32.

MAUDIE COLLINS
"Ma"

Jacksonville, Fla.

Phi Delta Society; Basket-ball, '29-'32; Dramatic Club; Choral Club; Choir; Life Service Band; Student Volunteer.

FRANK DEITZ
"Frankie"

Young Harris, Ga.

Honor Roll, '30-'31.

INEZ CORLEY
"Boots"

College Park, Ga.

Susan B. Society; Student Volunteer; League; Art Club.

J. V. DILLARD
"Slu"

Hull, Ga.

Y. H. D. S.; Honor Roll, '30-'32; Working Gang, '31; Choir; Music Club.

HUDSON CLARY
"Brut"

Culverton, Ga.

Phi Chi Society; Honor Roll, '31.

MARY ELIZABETH GOODWIN
"Becky"

Lumpkin, Ga.

Phi Delta Society.

RALPH HAMPTON
"Hamp"

Young Harris, Ga.

Phi Chi Society; Basket-ball, '30-'32; Captain Basket-ball; Football, '31-'32; Baseball, '30-'31; Student Council.

OTELIA HUTCHINGS
"Telia"

Deepstep, Ga.

Phi Delta Society; Life Service Band; Honor Roll, '30-'32.



ENOTAH

TIM HOLBROOK
"Tim"

Powder Springs, Ga.

Y. H. D. S.; Secretary Y. H. D. S.; Intercollegiate Debater; President League; Student Volunteer; Working Gang; Ministerial Association; Forensic Club.

GEORGE HOLCOMB
"George"

Tate, Ga.

Phi Chi Society; Student Council, '31-'32; Basket-ball, '31-'32; Baseball, '30-'31.

DEWITT HOLCOMB
"D"

Tate, Ga.

Phi Chi Society; Basket-ball, '31-'32; Baseball, '30-'31; Football, '31-'32; Working Gang, '31.

JOSEPH HAMILTON
"Little Joe"

McDonough, Ga.

Y. H. D. S.; Intercollegiate Debater; Orchestra, '29-'32; Choir, '29-'31; Music Club, '29-'31; Student Volunteer; Glee Club, '30-'31; Forensic Club.

LEILA HAYNES
Clermont, Ga.

Susan B. Society; Student Volunteer; Choir; Music Club; Orchestra; League; Choral Club; Reporter of Society, '31-'32.

CECIL HARRIS
"Red"

Tallahpoosa, Ga.

Phi Chi; Champion Debater; League; Forensic Club.

MYRIAL LEE ROBERTS
"Mi-ral"

Lutbersville, Ga.

Phi Delta Society; Choir; Dramatic Club; Life Service Band; League; Student Volunteer; Choral Club.

ROBERT G. HARPER
"Gutso"

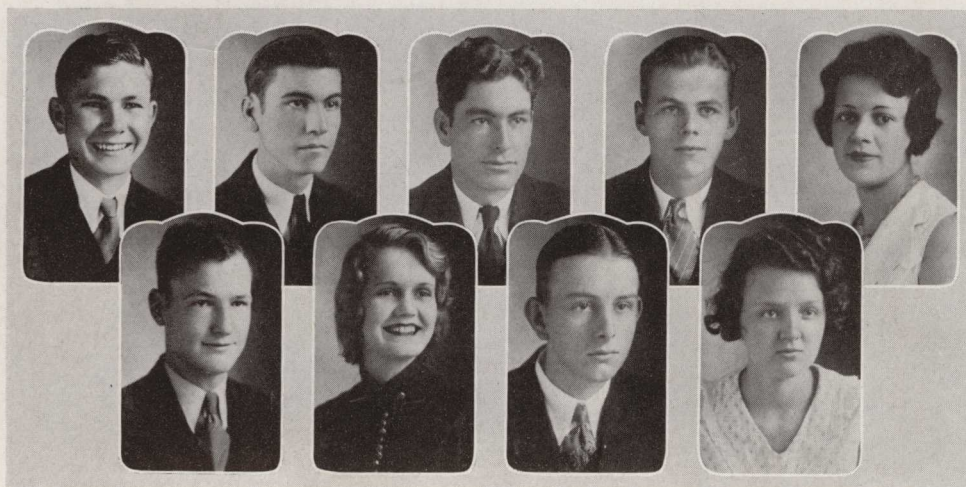
Washington, Ga.

Working Gang, '31.

ELIZABETH GARRARD
"Lib"

Washington, Ga.

Phi Delta Society; Honor Roll, '30-'32; Working Gang.



ENOTAH

ERNEST HAIR
"Red"

Dalton, Ga.

Y. H. D. S.; Student Volunteer.

FLORA MAE EVARTS
"Babe"

Adel, Ga.

Susan B. Society; Life Service Band.

CALVIN FLOYD
"Brother-in-law"

Danielsville, Ga.

Y. H. D. S.; Supreme Court; Choir; Red Devil Basket-ball, '30-'31; Student Volunteer.

EDNA ECHOLS
"Orph"

Asbeville, N. C.

Susan B. Society; Basket-ball, '30-'32; Working Gang.

JOSEPH PATTILLO
"Petilo"

Chipley, Ga.

Phi Chi Society; Secretary Phi Chi Society.

EDITH ROSS
"Peg"

Empire, Ala.

Phi Delta Society; Dramatic Club; Life Service Band; Student Volunteer; Honor Roll, '30-'31.

VEAN PARSON
"Freshman"

Young Harris, Ga.

Y. H. D. S.; Librarian Y. H. D. S.; Working Gang, '31.

ELLEN SPIVEY
"Wee-Bit"

Macon, Ga.

Susan B. Society; President of Society; Secretary and Treasurer of Society; *Enotah Echoes* Staff; Working Gang.

MAXIMILIAN PURCELL
"Percy"

Macon, Ga.

Phi Chi Society; Basket-ball, '29-'30; Football, '30-'31; Intercollegiate Debater; Red Devil Basket-ball, '30-'31; Forensic Club; Washington's Birthday Speaker, '31-'32.



ENOTAH

SEABIE REEVES
"Thebie"

Millen, Ga.
Phi Delta Society; Dramatic Club.

MORGAN A. SANDIFER
"Slim"

Locust Grove, Ga.
Phi Chi Society; Orchestra, '31-'32; Manager Orchestra, '32; Choir, '31-'32; Glee Club.

W. R. SMITH
"Rooster"

Garfield, Ga.
Y. H. D. S.; Vice-President Y. H. D. S.; Ministerial Association; Student Volunteer; Intercollegiate Debater; Forensic Club; League.

ELMER WOLFE, JR.
"Chip"

Perry, Ga.
Phi Chi Society; Intercollegiate Debater; Basket-ball, '30-'32; Football, '31-'32; Forensic Club.

CLEO VEAL
"Click"

Deepstep, Ga.
Phi Delta Society; Life Service Band; Honor Roll, '30-'32.

JOE C. VAUGHAN
"My Good Worm"

Carnesville, Ga.
Y. H. D. S.; Intercollegiate Debater, President Society; Anniversary, '31-'32; President Senior Class; Editor-in-Chief of THE ENOTAH; Honor Roll, '30-'31; Working Gang; Forensic Club; Supreme Court.

MAXWELL TAYLOR
"Red"

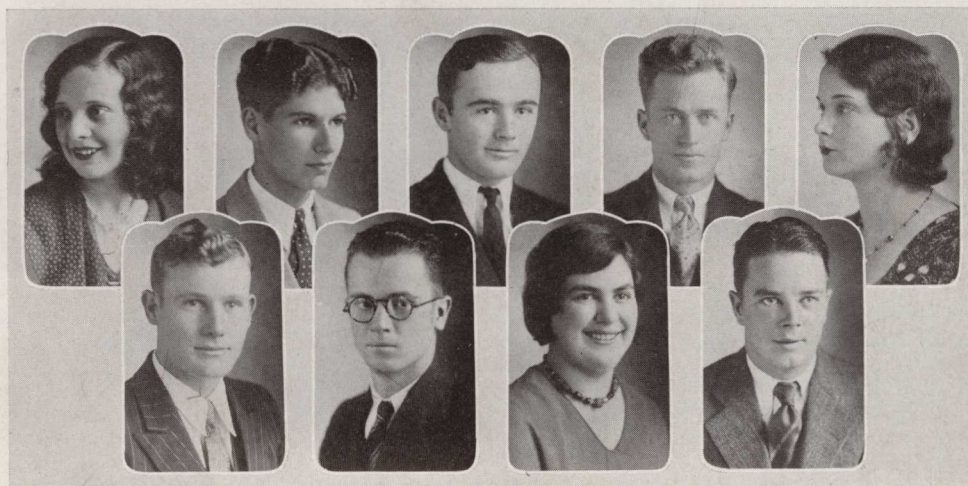
Gainesville, Ga.
Phi Chi Society.

ANNELLE SEGARS
"Anal"

Carnesville, Ga.
Susan B. Society; Life Service Band.

GEORGE THOMAS
"Jughead"

Morganton, Ga.
Football, '31-'32.



ENOTAH

CLIFFORD SANDERS
"Sweetie Bug"

Pineburst, Ga.
Phi Delta Society; Basket-ball, '30-'32; *Enotah Echoes* Staff; Life Service Band; Society Reporter; Secretary of Society.

FAY SUTTON
"Faye"

Young Harris, Ga.
Honor Roll, '31-'32.

HAZEL JACOBS
"Jake"

Grayson, Ga.
Susan B. Society, President of Society; Basket-ball, '30-'32; President of Choir; Secretary Student Council; Vice-President of Senior Class; Circulation Manager ENOTAH; Life Service Band; League; Intercollegiate Debater.

EUGENE HUGHES
"Gene"

Bremen, Ga.
Phi Chi Society; Dramatic Club.

WILLIE B. KELLY
"Bishop"

Ideal, Ga.
Phi Chi Society; Secretary of Phi Chi Society; Working Gang; Honor Roll, '30-'31.

NORA P. JOHNSON
"Curley"

Lindale, Ga.
Phi Delta Society, President of Society; Dramatic Club; Working Gang, '30-'31.

LOUIS O. KIDD
"Hula"

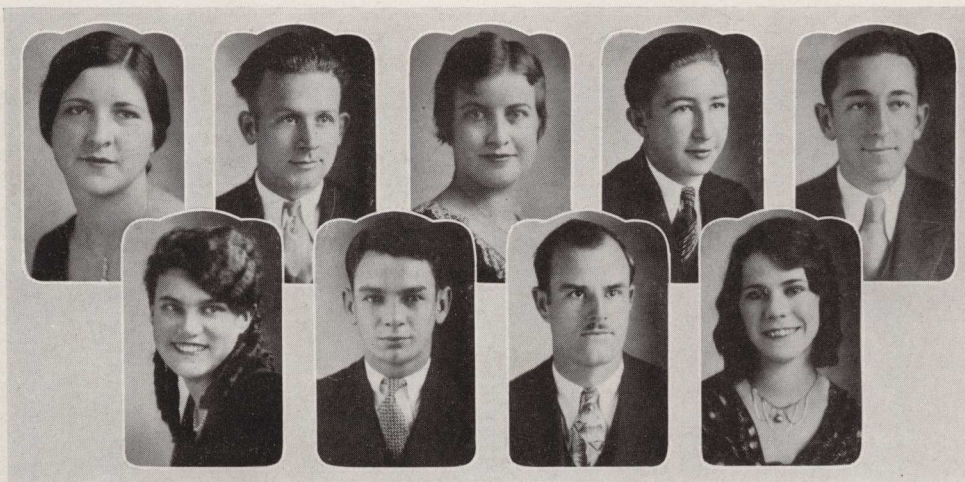
Elmodel, Ga.
Phi Chi Society; Dramatic Club.

JOE KIGHT
"Captain"

Macon, Ga.
Phi Chi Society; Working Gang, '26-'32.

LUCILE LATHAM
"Lute"

Orange, Ga.
Phi Delta Society; Student Volunteer; Life Service Band; League.



ENOTAH

WYATT MARTIN
"Right"

Rome, Ga.

Phi Chi Society; Basket-ball, '30-'31; Red Devil, '31-'32.

CLARA SHIRLEY
"Shirley"

Clayton, Ga.

Susan B. Society; Life Service Band.

DEWITT SHIPPEY
"President"

Colquitt, Ga.

Y. H. D. S.; Champion Debater; President Y. H. D. S.; Ministerial Association; President 3A, 4A and 1C Classes; Intercollegiate Debater, '30-'31; Chorister; Dramatic Club; Glee Club; Evangelistic Club; Student Volunteer; Choir.

RHODA STUDESTILL
"Pete"

Lakeland, Ga.

Phi Delta Society; Student Volunteer; Student Council, '31-'32; Basket-ball, '30-'32; Captain Basket-ball, '31-'32; Manager Basket-ball, '31-'32; Life Service Band; Choir.

JAMES WIGGINS
"Wiggins"

Norman Park, Ga.

Y. H. D. S.; Orchestra, '30-'31; Leader of Orchestra, '30-'32; Music Club; Choir; Glee Club.

W. P. ROWE
"Daddy Rowe"

Young Harris, Ga.

Phi Chi Society; Champion Debater; Supreme Court.

ELEANOR SKELTON
"Nor"

Kennesaw, Ga.

Phi Delta Society.

JEPHA WYATT
"Jep"

Atlanta, Ga.

Phi Chi Society; Football, '31-'32.

VONCILE TATUM
"Nig"

Dawson, Ga.

Susan B. Society; Life Service Band.



ENOTAH

ROBERT McCURDY
"Bob"

LaFayette, Ga.

Y. H. D. S., '31-'32; Honor Roll, '31-'32.

KATHERINE PANGLE
"Pangle"

Asheville, N. C.

Phi Delta Society; Choir; Business Manager *Enotah Echoes*, '31-'32; Working Gang; Music Club; Reporter of Phi Delta; League; Art Club.

WILL McEUEEN
"Little Willie"

Blacksbear, Ga.

Phi Chi Society; Champion Debater; Football, '30-'32; Dramatic Club; Vice-President Sunday School Class, '30-'31.

TOM McELHANNON
"Little Mac"

Jefferson, Ga.

Phi Chi Society.

JUANITA PLESS
"Nita"

Young Harris, Ga.

R. L. McELHANNON
"Big Mac"

Jefferson, Ga.

Phi Chi Society; Dramatic Club; Working Gang; Chaplain of Working Gang; Cheer Leader, '31-'32.

MARTIN T. MCGREGOR
"Mac"

Girard, Ga.

Intercollegiate Debater; Choir; Music Club; President Glee Club; Red Devil Basket-ball, '30-'31; Forensic Club.

MARION PARKER
"Trixie"

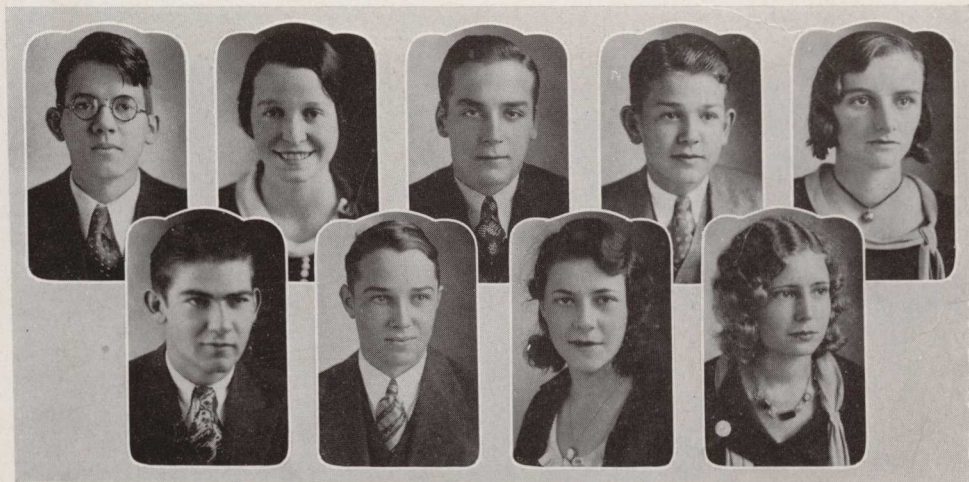
Chipley, Ga.

Phi Delta Society.

CORNELIA WINN
"Boots"

Plum Branch, S. C.

Phi Delta Society; Music Club.



ENOTAH

WILSON LUMPKIN HEFLIN

"Little Wilson"

Cordele, Ga.

Y. H. D. S.; Champion Debater; Edmonson Medal, '31; Assistant Editor *Enotah Echoes*, '30-'31; Editor-in-Chief *Enotah Echoes*, '31-'32; Forensic Club.

MINNIE INEZ WINN

"Wench"

Atlanta, Ga.

Phi Delta Society; President Phi Delta Society; Dramatic Club; *Enotah Echoes* Staff; Working Gang; Honor Roll, '30-'32; First Honor.

RAYMOND PHILLIPS

"Rep"

Alpharetta, Ga.

Phi Chi Society; Vice-President Phi Chi; Judge of Peel Hall.

GERTRELL WOOD

"Gertie"

Gillsville, Ga.

Susan B. Society; Life Service Band; President Life Service Band; League; Student Volunteer; Evangelistic Club; Working Gang.



IN MEMORIAM

STEPHENS GRADY MILLER

1891 — 1932

Dean of Young Harris College

Mourned by The Class of '32



PROPHECY

May 1, 1952.

SOON AFTER the beginning of the 1932 Summer Session of Young Harris College one of the notorious members of the class of '32 (staying for health, not for Physics) wandering alone on Ball Mountain, fell through Prof. Worth Sharp's shaft and relapsed into a state of unconsciousness. Undisturbed for almost twenty years, he lay in a peaceful slumber at the foot of the mountain. January 1st, he suddenly raised from his stupor and his first thoughts were of his classmates. For four months he has worked earnestly in locating them. At his request, the following is being published, most of which was gathered from a "Bulletin of Famous People."

Cleo Veal is in Alaska, proprietress of a chicken farm. Her fortune has been made by renting hens to the natives during laying season and business is so prosperous that 'Hula' Kidd has been hired as business manager. Cliff Sanders is leader of the W. C. T. U. in Chicago. J. B. Ward and W. P. Rowe, combining forces, broke Monte Carlo and are now living in style on 5th Avenue. Annelle Segars, Elizabeth Goodwin and Cornelia Winn compose a troupe of folly girls in a theatre owned by W. R. Smith and R. L. McElhannon. Nora P. is studying voice under the renowned artist, Athlete Allen.

Robert Harper has just broken all time speed record, 400 miles per hour, in a rocket machine, designed by Annie Kate Harris. Robert McCurdy and Tom McElhannon are members of Towns County Chaingang. They are serving terms of ten years each for robbing the Chop Suey Restaurant in Dope Joint, of which Elizabeth Garrard and Minnie Burry are proprietresses. Jeptha Wyatt is pastor of First Methodist Church of McGregerville, named for Colonel McGregor. The most shocking fact is that Agnes Burns and C. D. Allen are seen on time in their accustomed place at church every Sunday morning. Gene Hughes, under supervision of Minnie Winn, is taking up tickets in Dean's Main Tent. Janie Lou Alford is first woman physician of Dry Branch. Her only advice is, "Drink more water and talk less," but it has brought relief to thousands who were afflicted with grouch and gossip. Red Hair is a praiseworthy flagpole sitter, his record being 150 hours. Bill McEuen is a renowned veterinarian on a dairy farm owned by Lamar Guthrie and Shirley Davis.

Chip Wolfe and Marion Parker are seeking love and romance in the wilds of Africa, while Dwight Clark, short story writer for "Household Journal," uses their adventures for the theme of all his works. Seabie Reeves and Juanita Pless are head nurse and dietitian, respectively, in a hospital owned by James Wiggins and Fay Sutton. Edith Ross, Katherine Pangle, Myrial Roberts and Lucile Latham have given up their careers to the causes of depression, and now hold a definite standing in the bread line. Joe Patillo has won fame as an umbrella mender, Wyatt Martin is his utility man. Tip Barnes and J. V. Dillard have gone into partnership and are owners of a second hand casket establishment. Caskets are being furnished by DeWitt Shippey and remodeled by Rhoda Studstill and Eleanor Skelton.

Calvin Floyd is Chief Justice of Supreme Court. His jurors are: Maxwell Taylor, Hazel Jacobs and Ruth Nicholson. Tim Holbrook and Maxwell Purcell have retired from business and are using their leisure time solving cross word puzzles for the Atlanta Journal. Leland Bagwell is manager of Mighty Hagan Shows, among the cast are Flora Mae Evarts, show girl; Raymond Duncan, clown; Otelia Hutchings, fortune teller;

ENOTAH

and Hudson Clary, peanut man. Joe Kite is principal of Gum Log High School. His leading professors are: Joe Vaughan, Latin; Ralph Hampton, Mathematics; Raymond Phillips, English; and Voncile Tatum, Physical Education Directress. Ruby Brown, Maudie Collins and Frances Deariso are taking correspondence courses in tennis from Wilson Heflin.

Cecil Harris is hardly supporting Edna Mae Clark on a salary as operator of his light and steam plant. Joe Hamilton is endeavoring to support Louise Adams on his salary as Cecil's assistant. They seem not to have learned the fundamental principles from Ed. Kirby. Barbara Bruce has established a home for blind mice; Dot Cook and Edna Echols have very unselfishly given their services to the worthy cause. Lovick Adams is chief of Police in Blairsville. His traffic cops are Lloyd Boykin and Frank Deitz. George and De Holcomb have established "Holcomb Bros. Funeral Home" on the square adjoining Dr. Fields' Clinic. George Thomas is the director of the famous Discord Orchestra in Detroit, Mich. The orchestra is composed of: Clarence Cochran and Tom Brady, masters of Jew's Harp; Clara Shirley and Vean Parsons, masters of bubble-blowers; and Ellen Spivey is at the drums. Gertrell Wood and Inez Corley are co-partners in a bootblack shop and beauty parlor. Morgan Sandifer and John Jackson have a wiener stand adjacent to Miller and Kelley Dog Hospital.

Leila Haynes and Adeline Brown, with the aid of their knowledge of Physics, have mastered a stream of water and have converted it into a swimming pool.

As he gave us the name and occupation of his last classmate, with a sigh of: "Backward, turn backward, oh time in your flight," he sank again, exhausted, into the eternal sleep for the shock had been too much for him to bear.

BARBARA BRUCE,
LELAND BAGWELL,
NORA JOHNSTON,
LOVICK ADAMS.



WILL

STATE OF GEORGIA,
COUNTY OF TOWNS.

WE THE SENIOR CLASS of Young Harris College of said State and County, being of sound mind, and perfect understanding, feel it our most sacred duty, before plunging into the sea of life, to leave our most worthy and desired possessions to the Class of '33. We hope they will handle them with care and use them to an advantage in establishing a reputation equal to that of the Class of '32. We hereby declare and ordain this, our last will and testament, declaring all others null and void:—

To the Juniors we leave our sophistication and knowledge of all that is, has been, and is to be.

The entire class gladly wills to all the underclassmen the hope that they will some day attain the supreme height of knowledge that we have and that they will be able to make the best of every opportunity to display it as we have.

To the faculty, that tireless body which has stood by us faithfully, we will oceans of praise and mountains of thankfulness, and we wish them many restful and peaceful nights.

To Buddie Squires, we leave our undying gratitude and love for his many services to us during our school days here.

We, Rhoda Studstill and Edna Echols, will our ability to play ball to Mary Dodd and Johnnie Jordan. May they obtain as much joy from it as we have.

I, Otelia Hutchings, hereby will my studiousness to Lillian Massey, having previously read the proverb, "Help those who are in need of help."

We, Raymond Duncan and Joe Vaughan, do sadly bequeath our many responsibilities to Sam Arrendale.

We, W. R. Smith and Robert McCurdy, leave our boisterousness to Claire Smith.

I, Morgan Sandifer, do hereby bequeath my numerous curls to Earl Pearson, hoping that they will entice as many of the fairer sex next year as they have this year.

We, Raymond Phillips, J. V. Dillard and Martin McGregor, leave our melodious voices to Harold Trapnell, Roy Kennimer and Jimmie Jones.

I, Annie Kate Harris, bequeath my goodnaturedness to Helen Adams, Almyra David, and Nell Hardy.

We, Katherine Pangle, Seabie Reeves and Clara Shirley, generously bequeath our dignified manner to Katherine Humphrey, Ruby Guice, Mayo Mabry and Mildred Morgan.

We, C. L. Allen, DeWitt Shippey, Barbara Bruce, George Thomas and Joe Patillo, bequeath our "casing ability" to John Cochran, Courtney Shellnut, Bonnell Akins, Raymond Massengale and Mercer Twiggs.

We, Ellen Spivey, Juanita Pless, Inez Corley, Leila Haynes and Louise Adams, leave our ever sweet dispositions to Ed. Reeves, George Peck, and Ethleen Copeland.

We, Calvin Floyd, Robert Miller, Wilson Heflin, leave our enormous pedal extremities to Roy Maddox, Robert Hicks, and Ralph Taylor.

We, Agnes Burns, Gertrell Wood, Bill McEuen, Leland Bagwell and Lovick Adams bequeath our eloquent speeches to Lemuel Hames, Robert Young, Marvin Pittman, and Annie Ruth Perkins.

We, Vean Parsons, Gene Hughes, Jephtha Wyatt and Ernest Hair, leave our disregard for the co-eds to Burton Franklin, Mell Wilkinson, and Luther Roberts.

We, Cleo Veal and Janie Lou Alford, do pass on to Hannah Eubanks our ability as interpretative dancers.

ENOTAH

I, Joe Hamilton, do most willingly and heartily bestow upon T. J. Luke my pugilistic abilities.

We, Frank Deitz, John B. Ward, W. P. Rowe and Flora Mae Evarts, pass on to Grady Bennett, Cary Butts, and Marion Jenkins our ability to ask foolish questions.

We, Joe Kite, Hudson Clary, Robert Harper, Maxwell Taylor, Myrial Roberts, and Frances Deariso, leave to the entire Junior Class the ability to "shoot" Dad.

We, Clifford Barnes, Louis Kidd, Cecil Harris, Fay Sutton and Carl Hagan, pass on to Bill Chandler, Marjorie Donaldson and Ford Frazier our "taking" ways.

We, Tom Brady, Lloyd Boykin, Tim Holbrook, John Jackson, Willie B. Kelly and Elmer Wolfe, bestow our acrobatic abilities upon Harold Stanton, Alonzo Strickland and Padrick McGee.

We, Elizabeth Garrard and Edna Mae Clark, will to Irene Langford and Jimmie Wood our line of gossip.

I, Clifford Sanders, leave to Polly Wisenbaker my ukelele. May she keep up the noise on Bald trips next year.

We, Ruby Brown and Betty Goodwin, bequeath to Lois Brown and Margaret Butt our ability for tap dancing.

I, Edith Ross, do generously bestow on Chick Walton the second volume on "How to Make Love."

I, C. D. Allen, will to Dean Gillespie my "rat poison."

I, Dwight Clark, leave my chanticleeritudinous voice to Mary Cowart.

We, Big and Little Mac, leave to Courtney Oakes and William Erwin our tendency to shoot box cars.

We, Minnie Winn and Nora Johnston, leave our brooms to Beatrice Wyche and Norma Clements.

We, Ralph Hampton and George Holcomb, will to Earl Caldwell and Robert Sewell our ability to shoot goals.

I, DeWitt Holcomb, will my northern brogue to anyone who can acquire it.

I, Max Purcell, will my horse laugh to Fay Harmon.

I, Marion Parker, leave my "Baby Stare" to Carolyn Clements.

We, Eleanor Skelton and Maudie Collins, leave our talent for bridge to Mary Johnston.

We, Wyatt Martin and Hazel Jacobs, leave our "come hither" eyes to David Scales.

I, Ruth Nicholson, leave my anklets to Ione Green.

I, James Wiggins, do hereby bequeath my place in the Orchestra to Gene Stephens, and hope that he will gain as much recognition as I have gained.

We, Minnie Burry and Edna Clark, leave our room in the Dorm to Cornelia Clark.

I, Dorothy Cook, hereby absolve all my claims to that radiant beauty which will make my sojourn here memorable and leave it to Kassie Griffin.

We, Cornelia Winn and Lucile Latham, believing that in future years we shall need everything that we have, leave none of our abilities to anyone.

We, Voncile Tatum and Shirley Davis, will our ability to say the correct thing at the appropriate time, to Mary Lou Welchel and Elizabeth Johnston.

In addition to the above mentioned gifts, we do leave, from the depths of our hearts, our best wishes for the future students of Young Harris College and appoint Professor Camp as sole executor of this, our last will and testament.

In witness whereof, we, the Class of 1932, do hereby affix our seal, this, the 16th day of May, 1932.

DOROTHY COOK
CLIFFORD SANDERS

JAMES WIGGINS
LOVICK ADAMS

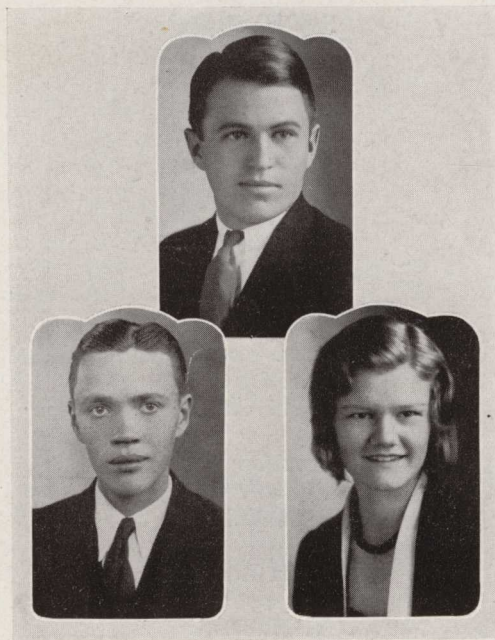
CLASS OF 1933

• • • •

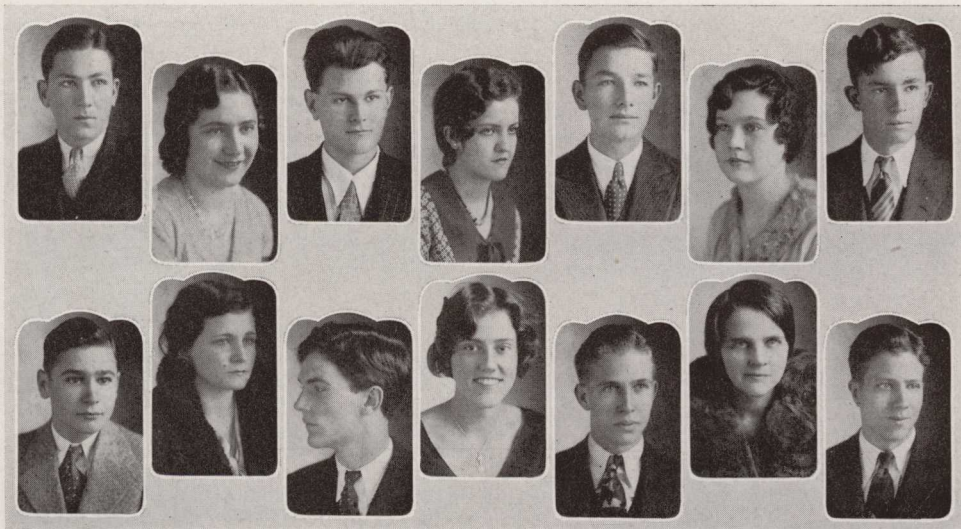
LANCE OLIVER
President

DEAN GILLESPIE
Vice-President

ELISE O'QUINN
Secretary and Treasurer



ENOTAH



CAREY BUTTS
Thomaston, Ga.
Phi Chi

FAY HARMON
Unadilla, Ga.
Phi Delta

WALTER PUETT
Young Harris, Ga.

MARY WELCHEL
Rome, Ga.
Phi Delta

BILL JONES
Dublin, Ga.
Phi Chi

MARY COWART
Roswell, Ga.
Phi Delta

LUTHER ROBERTS
Dawson, Ga.
Y. H. D. S.

WENDELL HARRIS
Ringgold, Ga.
Y. H. D. S.

JENNIE MAE JORDAN
Columbus, Ga.
Phi Delta

LEMUEL HAMES
Marietta, Ga.
Phi Chi

NELL HARDY
Athens, Ga.
Phi Delta

BONNELL AKINS
Blairsville, Ga.
Phi Chi

MARY DODD
Menlo, Ga.
Phi Delta

JAMES JONES
Rome, Ga.
Phi Chi

ENOTAH



DENNY HINDS
Atlanta, Ga.
Phi Chi

AGNES SIMMONS
Tucker, Ga.
Phi Delta

BURTON FRANKLIN
Metter, Ga.
Phi Chi

WILLIAM CHANDLER
Millen, Ga.
Y. H. D. S.

BESS MAUNEY
Blairsville, Ga.
Phi Delta

EARL PEARSON
Jacksonville, Fla.
Phi Chi

CORNELIA CLARK
Mulberry, Fla.
Phi Delta

ALONZO STRICKLAND
Blackshear, Ga.
Y. H. D. S.

FLORRIE WOMBLE
Quitman, Ga.
Susan B.

JAMES POPE
Monticello, Ga.
Phi Chi

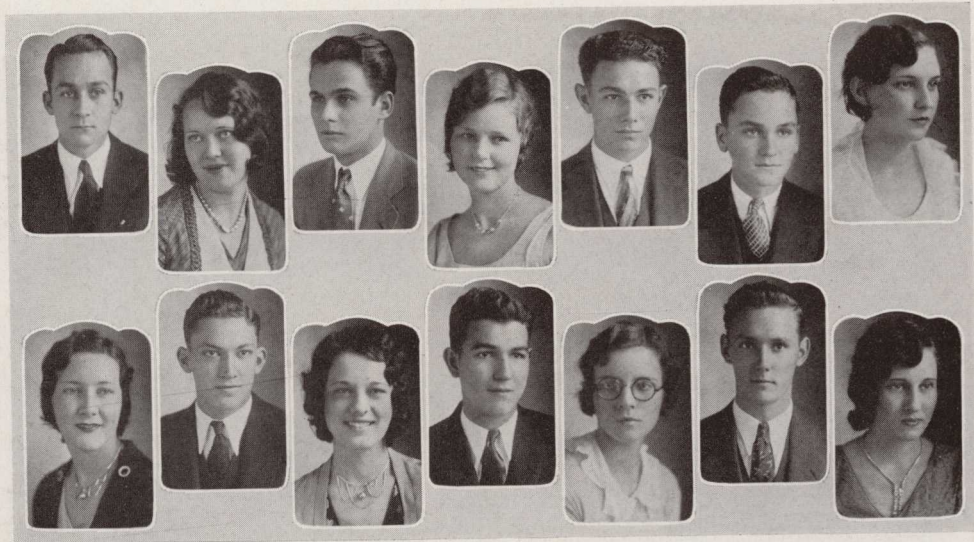
MYRTLE SWANSON
Young Harris, Ga.
Susan B.

JOHN DURHAM
Chipley, Ga.
Phi Chi

ROBERT STARNES
Asheville, N. C.
Y. H. D. S.

JIMMIE WOOD
Gillsville, Ga.
Susan B.

ENOTAH



ROBERT SEWELL
Carrollton, Ga.
Phi Chi

RUBY PARSONS
Macon, Ga.
Susan B.

J. W. ARNETT
Sylvania, Ga.
Y. H. D. S.

RUBY GUICE
Bremen, Ga.
Phi Delta

IVEY WEST
Temple, Ga.
Y. H. D. S.

SAM MOZLEY
Douglasville, Ga.
Y. H. D. S.

ELIZABETH JOHNSTON
Decatur, Ga.
Phi Delta

KATHRYN HUMPHREY
Millen, Ga.
Phi Delta

BILLIE MORROW
Carrollton, Ga.
Phi Chi

LILLIAN MASSEY
Barwick, Ga.
Susan B.

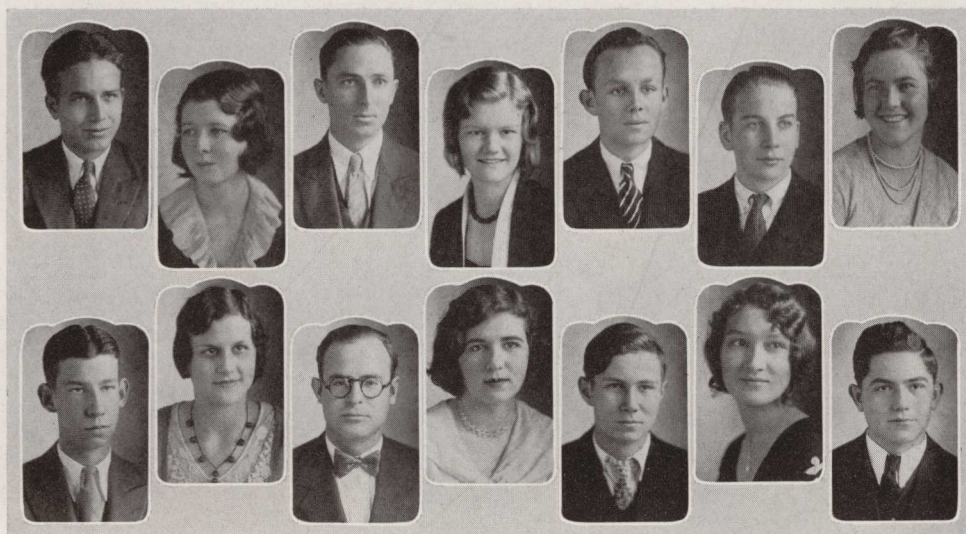
DAVID SCALES
Homer, Ga.
Phi Chi

ALINE BURGSEINER
Blackshear, Ga.
Susan B.

SAM ARRENDALE
Tiger, Ga.
Phi Chi

MARY JOHNSTON
Winder Ga.
Phi Delta

ENOTAH



CLARENCE WALTON
Pinehurst, Ga.
Phi Chi

MARION JENKINS
Vidette, Ga.
Susan B.

CHARLES PARROTT
Cobutta, Ga.
Y. H. D. S.

ELISE O'QUINN
Lakeland, Ga.
Phi Delta

HAROLD TRAPNELL
Metter, Ga.
Phi Chi

ROY STARNES
Asheville, N. C.
Y. H. D. S.

MILDRED MORGAN
Arnoldsville, Ga.
Phi Delta

JASPER YEOMANS
Dawson, Ga.
Phi Chi

ZEMILY HITT
Toccoa, Ga.
Phi Delta

PADRICK MCGEE
Norman Park, Ga.
Y. H. D. S.

MARGARET BUTTS
Blairsville, Ga.
Phi Delta

WILMER HARRISON
Sandersville, Ga.
Phi Chi

ANNIE RUTH PERKINS
Atlanta, Ga.
Phi Delta

WILLIAM ERWIN
Shellman, Ga.
Y. H. D. S.

ENOTAH



HAROLD STANTON
Jacksonville, Fla.
Phi Chi

MILDRED STONE
Oxford, Ga.
Phi Delta

JOHN L. BENNETT
Waycross, Ga.
Phi Chi

HELEN ADAMS
Oxford, Ga.
Susan B.

GEORGE GILLESPIE
Clarksville, Ga.
Phi Chi

CLAYTON WATERS
Sylvania, Ga.
Y. H. D. S.

CAROLYN DEAN
Blackshear, Ga.
Susan B.

LANCE OLIVER
Young Harris, Ga.
Y. H. D. S.

ESTELLE GOLDEN
Thomaston, Ga.
Phi Delta

BILL EVANS
Waynesboro, Ga.
Y. H. D. S.

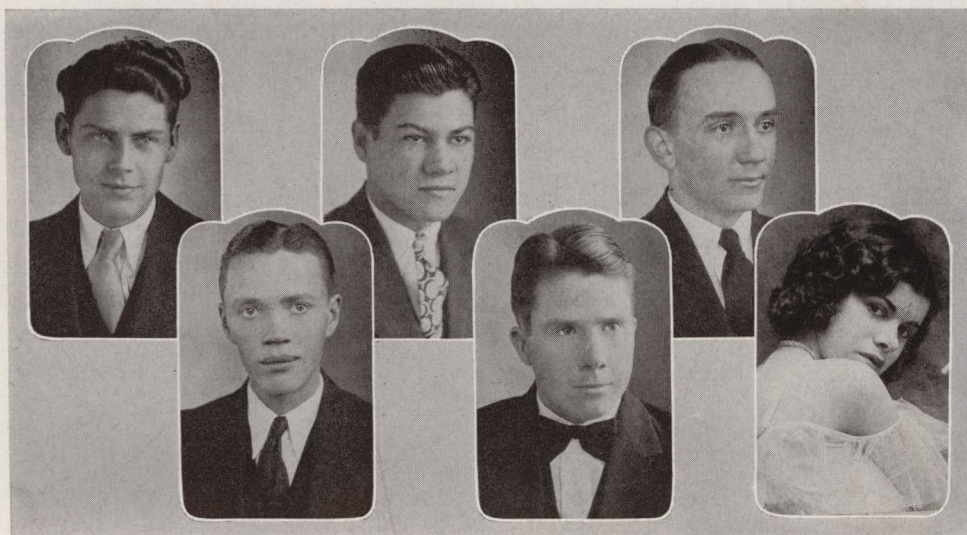
ETHLEEN COPELAND
Greensboro, Ga.
Phi Delta

FORD FRAZIER
Zeigler, Ga.

CHARLES LYNN
Washington, Ga.
Y. H. D. S.

MARY WILLIAMS
Atlanta, Ga.
Phi Delta

ENOTAH



GEORGE PECK
Trion, Ga.
Y. H. D. S.

T. J. LUKE
Macon, Ga.
Phi Chi

GRADY BENNETT
Adairsville, Ga.
Phi Chi

DEAN GILLESPIE
Clarksville, Ga.
Phi Chi

ROY MADDOX
Rebecca, Ga.
Phi Chi

LOUISE BEAM
Blue Ridge, Ga.
Phi Delta

WHY WE LIKE YOUNG HARRIS

The isolated location is ideal for study.

A spirit of brotherhood prevails among all students.

Young Harris is a hope for a young man or woman of limited means.

There is training offered to those who wish to extend the Kingdom of God.

Personal contact of students with faculty.

Active debating societies exist, but no fraternities.

Young Harris is large enough for students to gain distinction, but small enough for campus wide congeniality.

The mountains and cool climate give pep and vigor to everyone.

Those with ability have a chance to prove their worth.

The growing condition of the school gives us confidence in its being a reliable institution.

The traditions of Young Harris are inspiring.

Then there are peculiarities and expressions typical of Young Harris: "Casing," "Feuding," "Hash-hammer," "Cold Water," "Post Office Rushes," "Gypping," "Cooking," "Picnicking," "Working of the Working Gang," "Butter Milk House," "Squirrel Hunting," "Trips to Bald Mountain," "Calling 'Ducks.'" "

These and countless other reasons form what we know as the "Old Young Harris Spirit."

• • • •

ACADEMY SENIORS

ENOTAH



VIRGINIA HEMRICK
Atlanta, Ga.

WOODROW ALLAGOOD
Metcalf, Ga.

HELEN HYDE
Copperhill, Tenn.

EUGENE STEVENS
Atlanta, Ga.

MARY BELLE NOONAN
Savannah, Ga.

HUGH KIDD
Elmodel, Ga.

MITCHELL COLLEY
Swainsboro, Ga.

ELOISE GAZAWAY
Atlanta, Ga.

JACK MASSEY
Barium Springs, N. C.

GRACE MINCE
Atlanta, Ga.

COURTNEY OAKES
Atlanta, Ga.

PAULINE HEIDT
Decatur, Ga.

ELIZABETH HOLBROOK
Powder Springs, Ga.

RALPH DUKES
Atlanta, Ga.

BLANCH BERRY
Young Harris, Ga.

JOSEPH FORD
Atlanta, Ga.

HELEN DEARISO
Young Harris, Ga.

OLIN COLEMAN
Young Harris, Ga.

PRISCILLA BARBARA
Atlanta, Ga.

RUTH BELCHER
Cairo, Ga.

EVELYN VEAL
Oconee, Ga.

ENOTAH

MARY McLAUGHN
Toccoa, Ga.

ARCHIE HILLIARD
Atlanta, Ga.

JOHNNIE COLLEY
Hapeville, Ga.

SARAH SULLIVAN
Perkins, Ga.

EMERSON MCKENZIE
Atlanta, Ga.

ELIZABETH THOMAS
Atlanta, Ga.

ELIZABETH QUATTLEBAUM
Lockport, N. Y.

CHARLES BELLE ISLE
Atlanta, Ga.

HANNAH EUBANKS
Jacksonville, Fla.

JANIE CROW
Pavo, Ga.

WILLIAM JOHNSTON
Waynesboro, Ga.

MARGARET COLLEY
Hapeville, Ga.

MARTHA LASTINGER
Metcalfe, Ga.

KENNETH KAY
Clarkston, Ga.

HILDA HARRELL
Jacksonville, Fla.

SARAH TURNER
Macon, Ga.

MARTIN POTTS
Young Harris, Ga.

LOIS MANN
Jacksonville, Fla.

HARRIET STARKE
Toccoa, Ga.

ROBERT COOK
Atlanta, Ga.

LOUISE GILMER
Hinton, W. Va.



LAST WILL AND TESTAMENT OF ACADEMY SENIORS

THE PRACTICE of passing on treasures from one generation to another is as old as the dawn of civilization. Very unique have been some wills which have been recorded, showing the numberless vagaries with which the human mind is afflicted. Heirs often wrangle over estates as if they believed the makers had no right to say what they would do with their property. Men must make definite wills. The Senior Class of Young Harris Academy does not intend to make such an egregious blunder as to leave any question in the mind of the executor. May the shades of Blackstone prevent that!

The foregoing is a preamble to the last will and testament of the Senior Class of the Young Harris Academy, who, being of sane and liberal minds, having no fear of anyone except the Faculty, do hereby bequeath to the Junior Class all its laughs and giggles, its zero records, its unsolved problems and all unclaimed properties of no value whatever.

To the Freshman Class we bequeath our good will and our ability to persevere through all unfavorable conditions, also our wonderful intellectual qualities which have made us the enviable personages that we are.

I, Janie Crow, will to the world at large the commodity which I have had in abundance and which the world most sorely needs, my entire stock of common sense.

We, Lois Brown and Evelyn Veal, convey our abilities to know a good thing when we see it to Sara Williams.

We, Eloise Gazaway and Louise Gilmer, leave to some of our fellow-sufferers our ability to say the wrong thing in the right place or vice versa.

We, Elizabeth Holbrook and Francois Shearer, leave our Spanish Estates to anyone who is willing to file their claims as "squatters"—not responsible for what may not happen.

We, Courtney Oakes, William Johnson, Olin Coleman and Mitchell Colley, hereby present the Juniors with stars to which they can hitch their wagons and aim as high as we have.

We, Hugh Kidd and John Fargerson, leave our ability as spellers to Everett Stype.

We, Ralph Dukes and Gene Stephens, bequeath our book "Faults of Modern Grading" to Grace Rogers.

I, Harriet Starke, grant to Eleanor Allison my art as a leading lady.

I, Oscar Riddle, leave to Ed Ozburn my privilege to decorate Miss Bruce's blackboard with caricatures.

We, Karry Foster and Jack Massey, bequeath our casing ability to Ed Jordan.

I, Helen Deariso, pass on to Lois Hampton my right of getting to class a little late.

We, Martin Potts and Joe Ford, will our matching ability to D. P. Johnson.

We, Johnnie Colley and Loraine Twiggs, will to Woodrow Nix our task of learning poetry.

We, Kenneth Kay, Archie Hilliard and Elizabeth Thomas, bequeath our well-known capacity for exaggeration to the entire school at large, our favorite topic of conversation being, "What I would do if I were a member of the Board of Education."

We, Hannah Eubanks, Lois Mann and Jess Lewis, leave to Grace Mince our inevitable case.

I feel that the best gift that could have been bestowed upon me was the opportunity to act as secretary to this wonderful class.

(Signed) STEVE BRAMBLETT.

THE PROPHECY OF THE ACADEMY SENIORS

THE HINDU sorcerer stared into the ink pool and his withered lips numbed strange incantations. Slowly his voice rose to a piercing chant of strange words. The black pool in the copper basin swirled rapidly before my eyes, seemingly alive and writhing, and from its rainbowed depths there arose a faint voice as from some mysterious nether world.

"O audacious mortal, O trembler on the threshold of death, what wishest thou to know?"

I swallowed twice and then mustered my failing courage.

"I beg your pardon, sir, but do you know anything of the future life of the Senior Class of Young Harris Academy of 1932?"

"Aye," said the awe inspiring presence. "That I do. Listen!

"Steve Bramblett and Janie Crow pursued the muse of literature across the sea to Paris to study in the Sorbonne. Janie rose to heights as a serial writer and Steve sank to depths and begs today in the gutters.

"Woodrow Allagood and Joe Ford run a poor house in Paduka, Wisconsin. Among their inmates are Hugh Kidd and Frances Shearer, who have married and let the State support them, John Fargerson, Evelyn Veal and Martin Lastinger.

"Courtney Oakes and Martin Potts run a haberdashery, newer and cheaper clothes, in Young Harris. Grace Mince and Elizabeth Thomas run a fruit stand just behind them.

"Jack Massey is Mayor of Young Harris.

"Eugene Stephens is in an insane asylum, still blowing wildly and vainly on his saxophone.

"Harriet Starke and Archie Hilliard are practicing light housekeeping over a grocery store.

"Eloise Gazaway is married and lives in Hiawassee.

"Those who have succeeded on the stage are Bob Cook, a scene shifter; Elizabeth Holbrook, Blanch Berry and Virginia Hemrick, chorus girls, and William Johnson who owns the largest swimming pool in Hollywood.

"Jess Lewis is a professional basket-ball player and grins at the stands where a certain lady sits.

"Johnnie Colley is an Admiral in the Russian Female Navy.

"Mary McLaughn is leading advocate of the dole system and has done much to insure an army of the happy jobless in Boston.

"Olin Coleman is Principal of the High School of Hog Hollow. Sarah Sullivan is a charity worker in the same locality.

"Hilda Harrell and Sarah Turner do a sister dancing act in a circus side-show run by Kerry Foster who wears a vest with the largest checks east of the Mississippi.

"Ralph Dukes is serving a long term for shooting Mitchell Colley over a game of bridge.

"Margaret Colley is the wife of a circuit minister in the mountains. It is whispered that she regrets not marrying the now famous writer, Oscar Riddles, who draws three millions a year from his poems alone.

"Helen Deariso and Hannah Eubanks run a sailor's boarding house.

"Louise Gilmer and Helen Hyde are Missionaries and call their critics to the fact that after ten years labor in Tahiti they have persuaded the natives to wear flannel night gowns.

"Pauline Heidt and Elizabeth Quattlebaum are lady scientists. They slaughter guinea pigs galore.

"Mary Bell Noonan is wanted in five states as a bobbed-hair bandit.

"Lois Brown is a spelling professor.

"George Chambers is a radio crooner whose voice is loved by five thousand flappers.

"Hazel Collins is President of a hash and biscuit factory that turns out a thousand cans a day. She has ruined more stomachs than prohibition.

"T. J. Jackson, rising from Mayor to Bishop, then from Governor to Congressman, is still worshipped in his home town."

The voice stopped, but from within the depths of the ink I thought I heard a faint chuckle. I arose and poured the ink on the ground.

(Signed) KENNETH KAY.



ACADEMY JUNIORS

OFFICERS

HOMER GODDARD	<i>President</i>
HUGH BAGLEY	<i>Vice-President</i>
KATHERINE GRIFFIN	<i>Secretary and Treasurer</i>
DORIS KELLEY	<i>Reporter</i>

CLASS ROLL

MARJORIE ADAMS
 HUGH BAGLEY
 TOMMIE BAKER
 HAZEL COKER
 TROY COLLINS
 MARY SUE DONALDSON
 ROBERTA DONALDSON
 ELIZABETH EVANS
 BEATRICE FLEMINGS
 VANCE FOWLER
 WYNELL FREE
 WILLIAM GLIDEWELL
 JIM GOLDSMITH
 HOMER GODDARD
 KATHERINE GRIFFIN
 LOIS HAMPTON
 RUBY HARRISON
 JOHN HOOD
 W. A. JACKSON
 KERMIT JACKSON
 BILL JOHNSTON
 D. P. JOHNSTON

JACK JONES
 ROSS KIRBY
 ABBIE KILGORE
 FRED LARSONS
 WILLIE B. LATHAM
 ALICE MASHBURN
 RAYMOND MARCHMAN
 ALLEN MEWBORN
 EMERSON MCKENZIE
 ELIOT PIQUE
 MARY RUTH POOL
 WILLIAM SHARPE
 DEAN SCHULER
 L. B. SMITH
 EUGENE STEVENS
 SADIE SMITH
 S. B. TOLAR, JR.
 BETTY VAUGHN
 AVIS WILLIAMS
 SARAH WILLIAMS
 GENE ZELT
 LUCILE ZETROUER



ATHLETICS

FOOTBALL

SCHEDULE

Y. H. C.	2	vs Piedmont	40—There
Y. H. C.	6	vs Richmond Academy	25—There
Y. H. C.	33	vs Hayesville	7—Here
Y. H. C.	19	vs Cullowhee	0—There
Y. H. C.	0	vs G. M. C.	33—There
Y. H. C.	0	vs Hiawasse	24—Here

CLYDE L. PAYNE *Coach*
 RAYMOND DUNCAN *Captain*
 CLIFFORD BARNES *Manager*

Ends

RAYMOND DUNCAN

JOHN JACKSON
JOHN NEWTON

JESS LEWIS

Tackles

JOE VAUGHAN
ELMER WOLFE

WILLIAM GLIDEWELL
CLARENCE MARR

ROBERT YOUNG
WILLIAM EVANS

Guards

GEORGE THOMAS

LELAND BAGWELL
C. D. ALLEN

LLOYD WILLIAMS

Centers

JOHN KELLY

DEWITT HOLCOMB

Quarterbacks

A. D. CORN
JEPHTHA WYATT

Halfbacks

KERRY FOSTER
T. J. LUKE
ROBERT A. COOK

Fullbacks

GEORGE PECK
RALPH HAMPTON



GIRLS' BASKET-BALL

SCHEDULE

Y. H. C.	40 vs Cullowhee	26—Here
Y. H. C.	43 vs Monroe (A. C.)	22—Here
Y. H. C.	53 vs Brenau	39—There
Y. H. C.	46 vs Cullowhee	33—There
Y. H. C.	40 vs Monroe (A. C.)	35—There
Y. H. C.	49 vs Monroe A. & M.	33—There
Y. H. C.	36 vs Monroe A. & M.	18—Here
Y. H. C.	48 vs Brenau	29—Here
Y. H. C.	45 vs Rockmart	20—Here
Y. H. C.	46 vs Druid Hills Methodists	26—Here
Y. H. C.	55 vs Druid Hills Methodists	27—There

Y. H. C. (Total) 501	Opponents (Total) 308
--------------------------------	---------------------------------

MARY WILL WAKEFORD	Coach
RHODA STUDSTILL	Captain
RHODA STUDSTILL	Manager

Forwards

EDNA ECHOLS	LILLIAN MASSEY	NELL HARDY
	HAZEL JACOBS	

Center

RHODA STUDSTILL

Guards

ELISE O'QUINN	CLIFFORD SANDERS	BEATRICE WYCHE
MAUDIE COLLINS	MILDRED MORGAN	TABITHA BELCHER
	POLLY WISENBAKER	



BOYS' BASKET-BALL

SCHEDULE

Y. H. C.	31	vs	Tate Athletic Club	34—	Here
Y. H. C.	27	vs	Copperhill	5—	Here
Y. H. C.	43	vs	Tate Athletic Club	15—	There
Y. H. C.	26	vs	Dahlonega	23—	Here
Y. H. C.	25	vs	Cullowhee	27—	There
Y. H. C.	18	vs	Cullowhee	26—	There
Y. H. C.	38	vs	Reinhardt	8—	Here
Y. H. C.	25	vs	Dahlonega	12—	There
Y. H. C.	35	vs	Dahlonega	23—	There
Y. H. C.	18	vs	Grace Methodist Church	22—	Here
Y. H. C.	24	vs	Cullowhee	12—	Here
Y. H. C.	40	vs	Reinhardt	15—	There
Y. H. C.	23	vs	Piedmont	17—	Here
Y. H. C.	23	vs	Piedmont	45—	There
Y. H. C.	19	vs	S. G. T. C.	27—	There

Y. H. C. (Total) 418	Opponents (Total) 298
--------------------------------	---------------------------------

LESLIE JONES	<i>Coach</i>
RALPH HAMPTON	<i>Captain</i>
GEORGE HOLCOMB	<i>Manager</i>

Guards

RALPH HAMPTON	GEORGE HOLCOMB	BONNELL GARRARD
	SEABORN EBERHARDT	

Centers

GEORGE GILLESPIE	HOYL BRYSON	DAVID SCALES
	JASPER YEOMANS	

Forwards

LANCE OLIVER	DOVER GILLESPIE	DEWITT HOLCOMB
C. D. CORN	DEAN GILLESPIE	JESS LEWIS



RED DEVIL BASKET-BALL TEAM

SCHEDULE

Y. H. C.	24	vs	Hiawasse	10—Here
Y. H. C.	19	vs	Hiawasse	14—Here
Y. H. C.	21	vs	Hiawasse	12—Here
Y. H. C.	16	vs	Hiawasse	14—Here
Y. H. C.	20	vs	Blairsville	10—Here
Y. H. C.	16	vs	Hayesville	8—Here
Y. H. C.	30	vs	Hayesville (A. C.)	15—Here
Y. H. C.	23	vs	Red Devils of '31	22—Here
Y. H. C.	22	vs	DeMolay	16—Here
Y. H. C.	16	vs	Oak Grove	18—Here

WORTH SHARP *Director*

Forwards

"TIGER" MADDOX

HOMER GODDARD
JOHN DURHAM

MARVIN PITMAN

Centers

EDD REEVES

DEWITT HOLCOMB

WYATT MARTIN

Guards

LELAND BAGWELL

T. J. LUKE
CRADY BENNETT

CARL HAGEN



Y. H. C. ATHLETIC DIRECTORS

C. L. PAYNE	<i>Football Coach</i>
LESLIE JONES	<i>Boys' Basket-ball Coach</i>
MARY LOU WAKEFORD	<i>Girls' Basket-ball Coach</i>
WORTH SHARP	<i>Red Devil Basket-ball Coach</i>
W. L. DANCE	<i>Track</i>
RAYMOND DUNCAN	<i>Football Captain</i>
RALPH HAMPTON	<i>Boys' Basket-ball</i>
RHODA STUDSTILL	<i>Girls' Basket-ball</i>
T. J. LUKE	<i>Red Devil Basket-ball</i>
CLIFFORD BARNES	<i>Football Manager</i>
GEORGE HOLCOMB	<i>Boys' Basket-ball</i>
RHODA STUDSTILL	<i>Girls' Basket-ball</i>

Cheerleaders

ELISE O'QUINN BOB COOK ELOISE GAZAWAY ROBERT McELHANNON



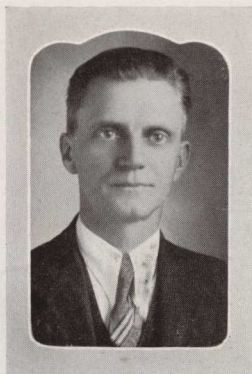


ORGANIZATION

PROPERTY

Young L. G. Harris College

INTERCOLLEGIATE DEBATERS

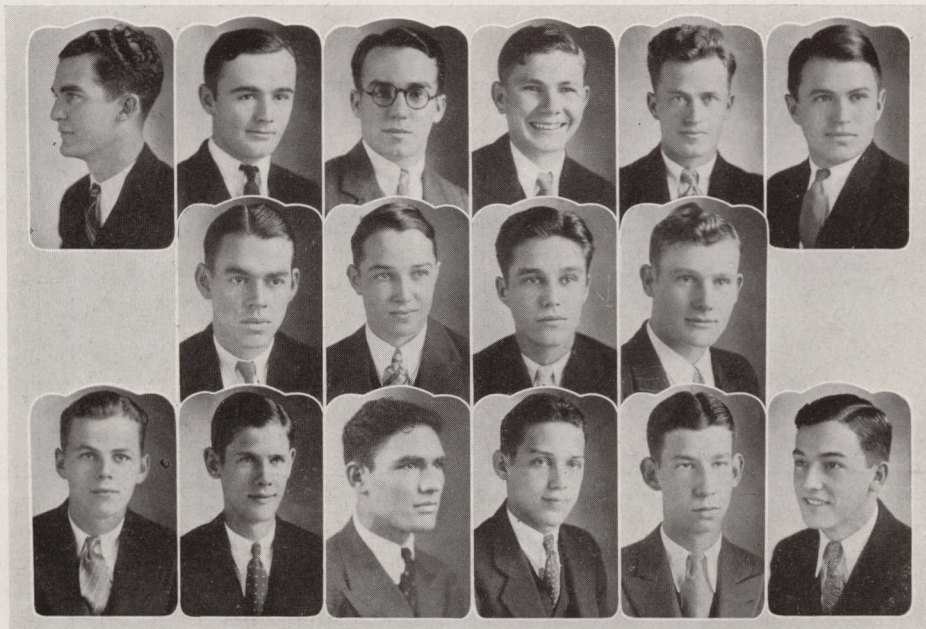


DEAN STEPHEN GRADY MILLER

(Deceased)

Coach

Hiawasse	JOHN DURHAM <i>and</i> W. R. SMITH	There
Hiawasse	LELAND BAGWELL <i>and</i> TIM HOLBROOK	Here
Reinhardt	ELMER WOLFE <i>and</i> LANCE OLIVER	Here
Reinhardt	HAROLD STANTON <i>and</i> MARTIN MCGREGOR	There
Dahlonge	CLIFFORD BARNES <i>and</i> JOE VAUGHAN	Here
Bowdon	JOE HAMILTON <i>and</i> C. L. ALLEN	There
Oxford	MAXIMILLIAN PURCELL <i>and</i> C. D. ALLEN	There
Oxford	JASPER YEOMANS <i>and</i> LOVICK ADAMS	Here



STUDENT COUNCIL

LANCE OLIVER

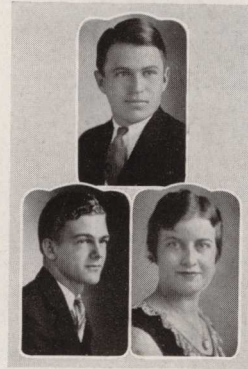
President

RAYMOND DUNCAN

Vice-President

HAZEL JACOBS

Secretary



Executive Council

ELLEN SPIVEY

RHODA STUDSTILL

AGNES BURNS

MARJORIE DONALDSON

MARY WILLIAMS

ALLEN MEWBORN

WOODROW ALLAGOOD

LOUISE GILMER

Athletic Council

RALPH HAMPTON

GEORGE HOLCOMB

JESS LEWIS

HOMER GODDARD

HARRIET STARKE

DEAN GILLESPIE



ENOTAH

ENOTAH STAFF

JOE C. VAUGHAN *Editor-in-Chief*
RAYMOND DUNCAN *Business Manager*
AGNES BURNS *Associate Editor*
HAROLD STANTON *Assistant Editor*
LANCE OLIVER *Assistant Business Manager*
MINNIE WINN *Sport Editor*
HAZEL JACOBS *Circulation Manager*
GEORGE PECK *Assistant Circulation Manager*
LOUIS KIDD *Sport Editor*
INEZ CORLEY *Art Editor*
GRACE MINCE *Assistant Art Editor*
WOODROW ALLAGOOD *Academy Editor*



ENOTAH

ENOTAH ECHOES STAFF

EDITORIAL STAFF

WILSON HEFLIN	<i>Editor-in-Chief</i>
EARL PEARSON	<i>Assistant Editor</i>
AGNES BURNS	<i>Associate Editor</i>
BILL CHANDLER	<i>Associate Editor</i>
DENNY HINDS	<i>Associate Editor</i>
HAROLD STANTON	<i>Literary Editor</i>
LELAND BAGWELL	<i>Sport Editor</i>
MINNIE WINN	<i>Social Editor</i>
ELISE O'QUINN	<i>Humor Editor</i>
LOUISE BEAM	<i>Feature Editor</i>

BUSINESS STAFF

KATHERINE PANGLE	<i>Business Manager</i>
RAYMOND MASSENGALE	<i>Assistant Business Manager</i>
ELLEN SPIVEY	<i>Circulation Manager</i>
LUTHER ROBERTS	<i>Assistant Circulation Manager</i>
NORMA CLEMENTS	<i>Typist</i>
CLIFFORD SANDERS	<i>Typist</i>
LOIS BROWN	<i>Typist</i>



YOUNG HARRIS DEBATING SOCIETY

OFFICERS

JOE VAUGHAN Fall Term *President*
 W. R. SMITH Fall Term *Vice-President*

DEWITT SHIPPEY Winter Term *President*
 CALVIN FLOYD Winter Term *Vice-President*

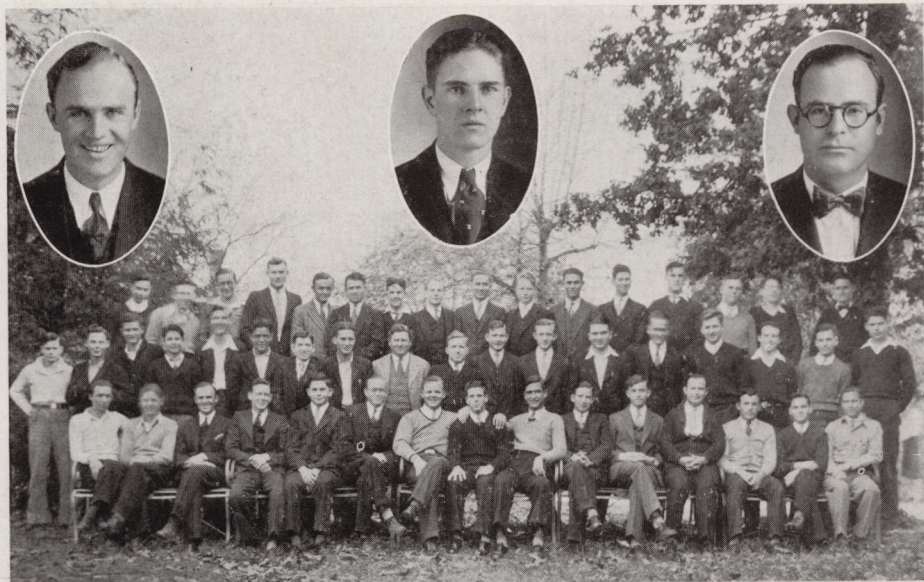
LANCE OLIVER Spring Term *President*
 JOE VAUGHAN Spring Term *Vice-President*

Champion Debaters

L. DEWITT SHIPPEY

WILSON L. HEFLIN

PADRICK P. MCGEE



PHI CHI DEBATING SOCIETY

OFFICERS

CLIFFORD W. BARNES Fall Term *President*

RAYMOND DUNCAN Fall Term *Vice-President*

RAYMOND DUNCAN Winter Term *President*

LELAND H. BAGWELL Winter Term *Vice-President*

LELAND H. BAGWELL Spring Term *President*

RAYMOND E. PHILLIPS Spring Term *Vice-President*

Champion Debaters

CECIL W. HARRIS

WILLIAM M. McEUEEN

W. P. ROWE



PHI DELTA SOCIETY

OFFICERS

NORA JOHNSTON	Fall Term	<i>President</i>
MINNIE WINN	Fall Term	<i>Vice-President</i>
NORA JOHNSTON	Winter Term	<i>President</i>
ELISE O'QUINN	Winter Term	<i>Vice-President</i>
ELISE O'QUINN	Spring Term	<i>President</i>
NORA JOHNSTON	Spring Term	<i>Vice-President</i>

MEMBERS

JANIE LOU ALFORD	HANNAH EUBANKS	DORIS KELLY	DOLLY SCHULER
ELINOR ALLISON	ELIZABETH GARRARD	MARTHA LASTINGER	ELEANOR SKELTON
PRISCILLA BARBARA	ELOISE GAZAWAY	IRENE LANGFORD	FRANCES SEWELL
TABITHA BELCHER	ELIZABETH GOODWIN	LUCILE LATHAM	AGNES SIMMONS
RUTH BELCHER	ESTELLE GOLDEN	WILLIE B. LATHAM	RHODA STUDSTILL
LOUISE BEAM	IONE GREEN	MAYO MABRY	BIM SHARP
LOIS BROWN	RUBY GUICE	LOIS MANN	MRS. J. W. SHARP
RUBY BROWN	KATHERINE GRIFFIN	EDNA MAPPIN	SARAH SULLIVAN
EUZELIA BRYAN	JANE GIPPLE	MILDRED MORGAN	ELIZABETH THOMAS
AGNES BURNS	FAY HARMON	BESS MAUNEY	SARAH TURNER
MINNIE BURRY	HILDA HARRELL	DOROTHY MCKINNY	LORRAINE TWIGGS
EDNA MAE CLARK	LOIS HAMPTON	ELISE O'QUINN	BETTY VAUGHN
NORMA CLEMENTS	ELLA JOY HAMPTON	KATHERINE PANGLE	CLEO VEAL
MARY COWART	ZEMILY HITT	MARION PARKER	EVELYN VEAL
MAUDIE COLLINS	OTELIA HUTCHINGS	ANNIE RUTH PERKINS	CORNELIA WINN
HAZEL COLLINS	KATHRYN HUMPHREY	VIRGINIA PIERCE	MINNIE WINN
DOROTHY COOK	HELEN HYDE	AUSTRELL POE	MARY LOU WELCHEL
ETHLEEN COPELAND	NELL HARDY	ELIZABETH QUATTLEBAUM	SARA WILLIAMS
CORNELIA CLARK	MARY JOHNSTON	SEABIE REEVES	ALMA JEAN WILLIAMS
SHIRLEY DAVIS	ELIZABETH JOHNSTON	GRACE ROGERS	MARY WILLIAMS
MARJORIE DONALDSON	NORA JOHNSTON	MYRIAL ROBERTS	BEATRICE WYCHE
MARY DODD	JENNIE MAE JORDAN	EDITH ROSS	WILLINA ZACKERY
ROBERTA DONALDSON	MARTHA KENNY	SADIE SMITH	RUTH JACKSON
MARY SUE DONALDSON	ANNE KENNY	CLIFFORD SANDERS	



SUSAN B. HARRIS SOCIETY

OFFICERS

HAZEL JACOBS	Fall Term	<i>President</i>
BARBARA BRUCE	Fall Term	<i>Vice-President</i>
ELLEN SPIVEY	Winter Term	<i>President</i>
HAZEL JACOBS	Winter Term	<i>Vice-President</i>
HAZEL JACOBS	Spring Term	<i>President</i>
JOHNNIE COLLEY	Spring Term	<i>Vice-President</i>

MEMBERS

LOUISE ADAMS	ELIZABETH EVANS	MARY RUTH POOL
HELEN ADAMS	FLORA MAE EVARTS	RUBY PARSONS
BARBARA BRUCE	WYNELL FREE	ANNELLE SEGARS
ADELINE BROWN	BEATRICE FLEMING	FRANCES SHEARER
ALINE BURGSTIENER	LOUISE GILMER	ELLEN SPIVEY
FRANCES BOGGS	LEILA HAYNES	CLARA SHIRLEY
JOHNNIE COLLEY	VIRGINIA HEMRICK	MYRTLE SWANSON
MARGARET COLLEY	PAULINE HEIDT	VONCILE TATUM
INEZ CORLEY	RUBY HARRISON	POLLY WISENBAKER
CAROLYN CLEMENTS	ELIZABETH HOLBROOK	FLORRIE WOMBLE
JANIE CROW	PAULINE HOLLAWAY	GERTRELL WOOD
CECIL CORN	HAZEL JACOBS	JIMMIE WOOD
CAROLYN DEAN	MARION JENKINS	LA FAY WOOD
MYRA DAVID	LILLIAN MASSEY	LUCILE ZETROUER
EDNA ECHOLS	GRACE MINCE	ALICE ROSE LANCE
	MRS. OZBURN	



ENOTAH

ORCHESTRA

- JAMES WIGGINS (Director) *Trumpet*
- GENE STEPHENS *Saxophone*
- ALONZO STRICKLAND *Violin*
- JENNIE MAE JORDAN *Violin*
- LEMUEL HAMES *Piano*
- JOE HAMILTON *Tuba*
- BURTON FRANKLIN *Drums*
- KATHERINE HUMPHREY *Saxophone*
- JACK MASSEY *Clarinet*
- MORGAN SANDIFER (Manager) *Clarinet*



STUDENT VOLUNTEERS

ANNIE RUTH PERKINS *President*

AGNES BURNS *Vice-President*

GRACE MINCE *Secretary and Treasurer*

TIM HOLBROOK *Reporter*

LOVICK ADAMS *Chorister*





MINISTERIAL ASSOCIATION



LIFE SERVICE BAND

Ministerial Groups



MUSIC CLUB



CHOIR

Music Groups



DRAMATIC CLUB



ART CLUB

Artists and Dramatists



FEATURES

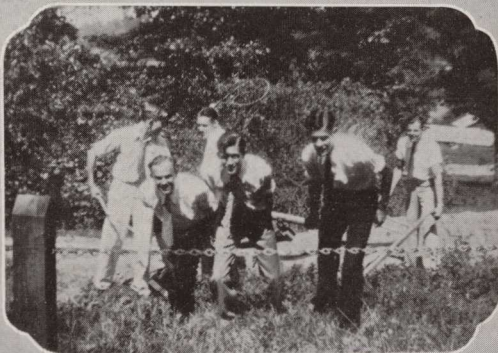


FAY SUTTON



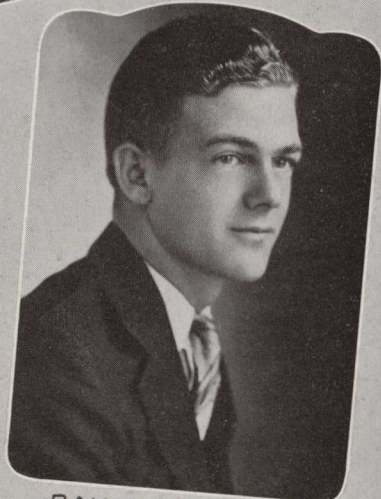
MINNIE WINN

MOST INTELLECTUAL



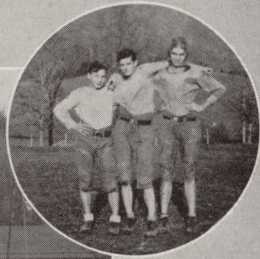


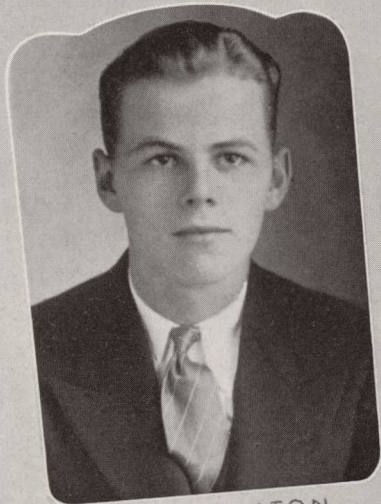
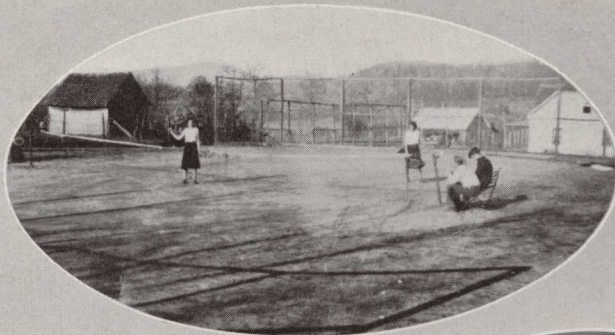
HAZEL JACOBS



RAYMOND DUNCAN

MOST POPULAR

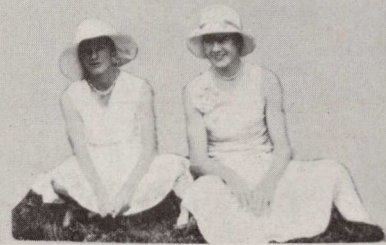


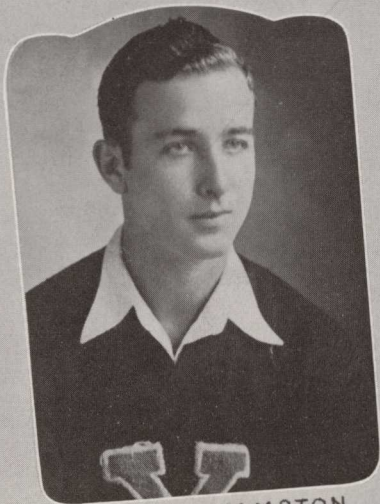


JOE HAMILTON
NEATEST BOY



DOT COOK
PRETTIEST GIRL



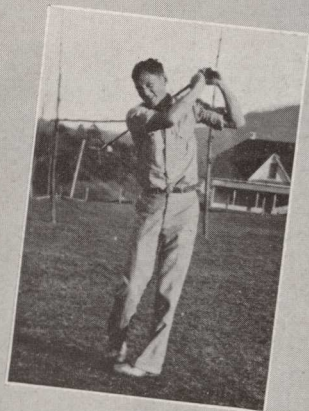


RALPH HAMPTON



RHODA STUDSTILL

MOST ATHLETIC



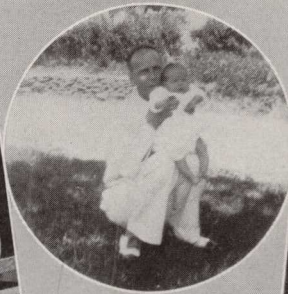


JOE VAUGHAN



AGNES BURNS

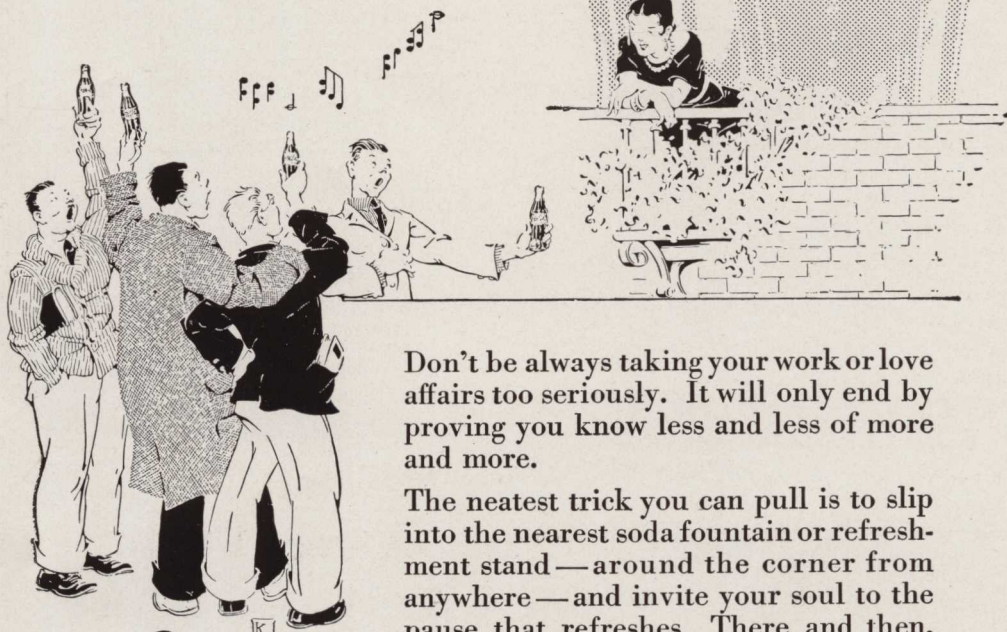
MOST DEPENDABLE



ADS and SATIRES



And dull care
withers on the vine



9
MILLION
a day

Don't be always taking your work or love affairs too seriously. It will only end by proving you know less and less of more and more.

The neatest trick you can pull is to slip into the nearest soda fountain or refreshment stand — around the corner from anywhere — and invite your soul to the pause that refreshes. There and then, seen through a rose-colored glass of delicious, ice-cold Coca-Cola, all things fall into true perspective and you become a man amongst men once more.

The Coca-Cola Company, Atlanta, Ga.

CW-4

IT HAD TO BE GOOD TO GET WHERE IT IS

Large Enough to Serve You
Small Enough to Know You

STRONG ENOUGH TO
PROTECT YOU

THE CITIZENS
BANK

GAINESVILLE : GEORGIA

Waiter (serving soup): "Looks like rain, sir."

Man: "Yes, sir, but it tastes like dish water."

Lace: "Why didn't you say something when the elevator man said, 'up'?"

Polly: "I thought he was having indigestion."

COMPLIMENTS

OF A

FRIEND

The Clayton Tribune

Commercial Printers

*We print the Enotah Echoes and other
job printing for Young Harris College*

MAIL ORDERS SOLICITED

L. P. Cross, Mgr.

CLAYTON : GEORGIA

Annie Kate: "Do you serve lobsters here?"

Mr. Mac: "Sure. We serve anyone, sit down."

Mrs. Tolar (as she was spanking Bob): "I am doing this to impress it upon your mind."

Bob: "Well, mother, I believe you are mistaken as to the position of my mind."

1860 1932

Seventh Oldest and One of the
Largest Newspapers in
Georgia

T H E
GAINESVILLE
E A G L E

*We appreciate the patronage of
Young Harris College and
pledge our future co-operation
in the fullest degree. : :*

W. E. MATHESON

1 1 1

"A GOOD STORE"

1 1 1

YOUNG HARRIS : GEORGIA

HOME OF SPORTING GOODS

Gainesville, Georgia

CORNER SPRING AND BRADFORD STREETS

1 1 1

"ON THE SQUARE"

PHONE 100

1 1 1

**PRUITT-BARRETT
HARDWARE CO.**

Nora P. (importantly): "I wonder who that distinguished looking chap is, who's just gone out? Been looking at me intently all the evening."

Big Mac: "Oh, that's Mr. Brown, the insanity specialist."

1 1 1

ALL PHOTOGRAPHS IN
THIS ANNUAL

were made by

1 1 1

ARNETT'S STUDIO

25½ NORTH LUMPKIN STREET

ATHENS : GEORGIA

Prof. Tolar: "Brother Ward, what is the zero hour?"

Bro. Ward: "When Prof. Camp reads the English grades."

* * * * *

Prof. Adams: "You can't sleep in my class."

Jess Lewis: "If you would talk lower I could."

*Fraternity, College and Class
Jewelry*

Commencement Announcements and
Invitations

Official Jewelers to Young Harris
College and Academy

L. G. BALFOUR CO.

Manufacturing Jewelers and Stationers
ATTLEBORO, MASS.

Miss Dawson: "What's this I smell in the Latin class room?"

Dillard: "I guess it's the dead language."

Miss Dawson: "No. It's the rotten grades."

* * * * *

Judge: "You can take your choice, ten days or ten dollars."

Seabie (before court for accident due to her driving): "I'll take the money, your honor."

DAVIS WASHINGTON CO.

1 1 1

Everything for Building

1 1 1

GAINESVILLE : GEORGIA

Ship by

FAIN'S TRUCK LINE



Freight and Express Service from Atlanta, Ga., to Murphy, N. C., via Young Harris and Hiawasse, Ga. All loads insured.

Special attention will be given trunks and other baggage for Young Harris students.



Atlanta Address—

GENERAL WAREHOUSE & STORAGE CO.,
272-274 Marietta Street

Murphy Address—

101 DEPOT STREET
Phone 101

FRIERSON-McEVER CO.

GAINESVILLE : GEORGIA

"Style and Quality Leaders"

CLOTHING, LADIES' READY-TO-WEAR, SHOES

Mail Orders Receive Prompt Attention

YOUNG HARRIS TEA ROOM

A Good Place to Eat

YOUR PATRONAGE ALWAYS APPRECIATED

1 1 1

MRS. MAC AND SON

A D E Q U A C Y



Offices and Store

In the production of fine books, or for that matter, fine printing of any sort there must be an adequacy of

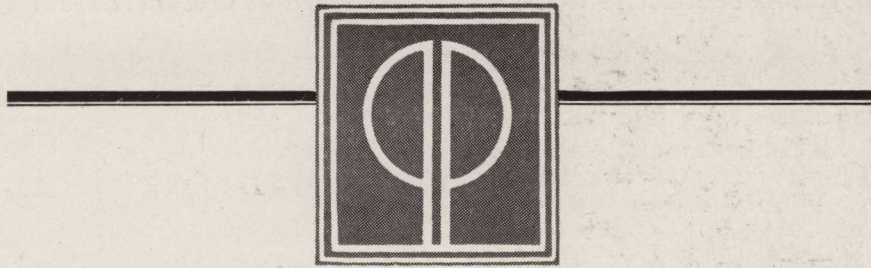
Understanding and experience to plan and interpret « Of workers who have mastered their crafts « Of materials of the best quality « And of modern equipment and exact skill in its direction. « « «

These sales and service offices and this manufacturing plant are evidences of an inflexible rule that adequacy must be maintained at « « «

FOOTE & DAVIES COMPANY
A T L A N T A , G E O R G I A
P R O D U C E R S
O F F I N E
A N N U A L S
B O O K L E T S
C A T A L O G S



Manufacturing Plant



ANOTHER
Personality
YEARBOOK



DESIGNED AND
ENGRAVED THE
PERSONALITY
WAY BY



.. SOUTHWESTERN ..
Photo-Process Co.

.. SPRING AT LUCKIE .. ATLANTA

PROPERTY
Young L. G. Harris College

CALENDAR SCHOOL YEAR 1931~32

- Aug. 31**—Rest for the weary—"Working Gang" dissolves.
Sept. 1—Students assemble—old ones looking well, new ones promising.
 " 2—Registration—impromptu program.
 " 3—Seniors make debut in Physics.
 " 6—Rat Court—freshmen visit "Annie."
 " 8—Societies welcome new members.
 " 15—Court Day in Hiawassee.
 " 16—Girls pay first visit to "Balonia" on Bald.
 " 26—First football game.
 " 30—Arrival of Enos.
Oct. 1—"Working Gang" Banquet—Squire dines in high style.
 " 10—Y. H. C. plays Richmond Academy—"Fat" Marr makes notorious dash.
 " 15—Young Harris—Susan B. Banquet.
 " 21—Dad Tolar forgets his 4th period Physics Class.
 " 30—4A-2C Kid Party—'nuff said.
Nov. 1—Enos conducts Prof. Camp's English Class.
 " 11—Seniors sell poppies—rules off—magic program.
 " 16—Champion debaters elected.
 " 15—21—Fall Term Exams.
 " 26—Thanksgiving—"Kempy"—first basket-ball game.
Dec. 1—Pictures made for Annual.
 " 13—"Hep" gets a thrill.
 " 13—Phi Chi-Phi Delta Play—"George in a Jam."
 " 16—Seniors elect Who's Who—We know our Venuses and Minervas.
 " 19—Out for holidays.
 " 19—**Jan. 4**—See "Chip" Wolfe.
Jan. 4—School again.
 " 16—Stunt Night.
 " 25—Phi Chi-Phi Delta Banquet.
Feb. 3—Bro. Ward rouses from his peaceful slumber in Physics long enough to answer a question.
 " 13—Susan B. Play—"Mamy's Lil' Wild Rose."
 " 15—20—Exams.
 " 18—Physics marks posted—Bagwell made 96.
 " 19—Y. H. C. defeats Piedmont—and how!
 " 22—Geo. Washington's Birthday—rules off.
Mar. 1—Dramatic Club presents "Elmer"—Hula gets his pants patched.
 " 3—Basket-ball boys go to tournament at Statesboro.
 " 5—Polly rates a "caser's note."
 " 5—First Intercollegiate Debate.
 " 7—Wood house burns.
 " 14—Biggest snow of season (1-2 m.m.)
 " 24—Senior Minstrel.
Apr. 9—Election Day.
May 9-13—Senior Week.
 " 16—All over ! ! !

